



March 22, 2022

ADDENDUM NO. 1

Notice to All Persons and Firms Proposing
to Submit a Bid or Furnish Materials for
West Port Plaza Drive - Marine Avenue Resurfacing &
West Port Plaza Drive Intersection Improvements
St. Louis County Project Nos. AR-1548 & AR-1673
Federal Project Nos. STP-9900(673) & CMAQ-9901(638)

The construction contract for this project has been revised as follows:

No. 1 (of 4):

Replace the U.S. Federal Wage Rates, General Decision Number MO20220001 (02/18/2022) with the following U.S. Federal Wage Rates, General Decision Number MO20220001 (03/04/2022).

No. 2 (of 4):

Remove/eliminate Job Special Provision No. 500.20.1 "Joint Sealant for Concrete Sidewalks".

No. 3 (of 4):

Replace the Missouri American Water Company permit application and plan of adjustment, located at the rear of the Construction Plans for this project and dated January 2022, with the attached copy of the approved permit application and plan of adjustment dated March 2022. Please note that additional water main relocation has been added to this permit application and that all water main relocation is expected to be completed prior to construction of this project.

Likewise, **replace** Job Special Provision No. 100.70.3 with the attached revised copy of Job Special Provision No. 100.70.3.

No. 4 (of 4):

In order to protect local endangered species and allow work to begin prior to October 31, 2022, all suitable trees associated with construction stages 1 thru 5 have been removed by County forces in recent weeks. **Revised** quantities include **corrected** quantities for Coded Pay Item Nos. 201-20.14, 201-20.22, and 201-20.23 on Construction Plan Sheet Nos. 2 and 4 (of 155) and Itemized Bid Sheet Nos. 4, 5, and 12 (of 25). Revised copies of Construction Plan Sheets No. 2 and 4 and Itemized Bid Sheets No. 4, 5, and 12 are attached to this addendum.

REVISED ITEMIZED BID SHEET NOS. 4 OF 25, 5 OF 25, AND 12 OF 25 ARE ATTACHED AND REFLECT THE CHANGES NOTED IN ITEM NO. 4 ABOVE. FAILURE TO SUBSTITUTE THE ITEMIZED BID SHEETS MAY RESULT IN REJECTION OF THE BID.

ATTENTION BIDDERS: THE ADDENDUM ACKNOWLEDGEMENT IN THE BID DOCUMENTS MUST BE COMPLETED AND SUBMITTED WITH ALL BID PROPOSALS.

Sincerely,



Kori Neely, P.E.
Supervisor, Project Managers
Project Development

JWK/BJG/bjg

Attachments: U.S. Federal Wage Rates - General Decision Number MO20220001 (03/04/2022), Approved Missouri American Water Company Permit Application and Plan of Adjustment, Revised Job Special Provision No. 100.70.3, Revised Construction Plan Sheets No. 2 & No. 4, Revised Itemized Bid Sheets No. 4, 5, and 12.

"General Decision Number: MO20220001 03/04/2022

Superseded General Decision Number: MO20210001

State: Missouri

Construction Types: Heavy and Highway

Counties: Missouri Statewide.

HEAVY AND HIGHWAY CONSTRUCTION PROJECTS

Note: Contracts subject to the Davis-Bacon Act are generally required to pay at least the applicable minimum wage rate required under Executive Order 14026 or Executive Order 13658. Please note that these Executive Orders apply to covered contracts entered into by the federal government that are subject to the Davis-Bacon Act itself, but do not apply to contracts subject only to the Davis-Bacon Related Acts, including those set forth at 29 CFR 5.1(a)(2)-(60).

If the contract is entered into on or after January 30, 2022, or the contract is renewed or extended (e.g., an option is exercised) on or after January 30, 2022:	<ul style="list-style-type: none"> . Executive Order 14026 generally applies to the contract. . The contractor must pay all covered workers at least \$15.00 per hour (or the applicable wage rate listed on this wage determination, if it is higher) for all hours spent performing on the contract in 2022.
If the contract was awarded on or between January 1, 2015 and January 29, 2022, and the contract is not renewed or extended on or after January 30, 2022:	<ul style="list-style-type: none"> . Executive Order 13658 generally applies to the contract. . The contractor must pay all covered workers at least \$11.25 per hour (or the applicable wage rate listed on this wage determination, if it is higher) for all hours spent performing on that contract in 2022.

The applicable Executive Order minimum wage rate will be adjusted annually. If this contract is covered by one of the Executive Orders and a classification considered necessary for performance of work on the contract does not appear on this wage determination, the contractor must still submit a conformance request.

Additional information on contractor requirements and worker protections under the Executive Orders is available at <https://www.dol.gov/agencies/whd/government-contracts>.

Modification Number	Publication Date
0	01/07/2022
1	01/21/2022
2	02/04/2022

Addendum No. 1 Item No. 1

3	02/18/2022
4	02/25/2022
5	03/04/2022

Addendum No. 1

Item No. 1

CARP0002-002 05/01/2021

ST. LOUIS COUNTY AND CITY

	Rates	Fringes
Carpenters.....	\$ 39.72	18.90

CARP0005-006 05/01/2021CASS (Richards-Gebauer AFB ONLY), CLAY, JACKSON, PLATTE AND RAY
COUNTIES

	Rates	Fringes
Carpenters:		
CARPENTERS & LATHERS.....	\$ 41.37	18.90
MILLWRIGHTS & PILEDRIVERS...	\$ 41.37	18.90

CARP0011-001 05/01/2021

	Rates	Fringes
Carpenter and Piledriver		
ADAIR, AUDRAIN (West of Hwy 19), BOONE, CALLAWAY, CHARITON, COLE, COOPER, HOWARD, KNOX, LINN, MACON, MILLER, MONITEAU, MONROE, OSAGE, PUTNAM, RANDOLPH, SCHUYLER, SHELBY AND SULLIVAN COUNTIES.....	\$ 33.69	18.90
ATCHISON, ANDREW, BATES, CALDWELL, CARROLL, DAVIESS, DEKALB, GENTRY, GRUNDY, HARRISON, HENRY, HOLT, LIVINGSTON, MERCER, NODAWAY, ST. CLAIR, SALINE AND WORTH COUNTIES.....	\$ 32.10	18.90
AUDRAIN (East of Hwy.19), RALLS, MARION, LEWIS, CLARK AND SCOTLAND COUNTIES.	\$ 33.70	18.90
BARRY, BARTON, CAMDEN, CEDAR, CHRISTIAN, DADE, DALLAS, DOUGLAS, GREENE, HICKORY, JASPER, LACLEDE, LAWRENCE, MCDONALD, NEWTON, OZARK, POLK, STONE, TANEY, VERNON, WEBSTER AND WRIGHT COUNTIES.	\$ 31.68	18.90
BENTON, MORGAN AND PETTIS...	\$ 32.15	18.90
BOLLINGER, BUTLER, CAPE GIRARDEAU, DUNKLIN, MISSISSIPPI, NEW MADRID, PEMISCOT, PERRY, STE. GENEVIEVE, SCOTT, STODDARD AND WAYNE COUNTIES.....	\$ 33.54	18.90
BUCHANAN, CLINTON, JOHNSON AND LAFAYETTE COUNTIES.....	\$ 32.85	18.90
CARTER, HOWELL, OREGON AND		

Addendum No. 1
Item No. 1

RIPLEY COUNTIES.....	\$ 32.43	18.90
CRAWFORD, DENT, GASCONADE, IRON, MADISON, MARIES, MONTGOMERY, PHELPS, PULASKI, REYNOLDS, SHANNON AND TEXAS COUNTIES.....	\$ 33.53	18.90
FRANKLIN COUNTY.....	\$ 37.14	18.90
JEFFERSON AND ST. CHARLES COUNTIES.....	\$ 39.72	18.90
LINCOLN COUNTY.....	\$ 35.50	18.90
PIKE, ST. FRANCOIS AND WASHINGTON COUNTIES.....	\$ 34.36	18.90
WARREN COUNTY.....	\$ 35.96	18.90

 ELEC0001-002 05/31/2020

BOLLINGER, BUTLER, CAPE GIRARDEAU, CARTER, DUNKLIN, FRANKLIN,
 IRON, JEFFERSON, LINCOLN, MADISON, MISSISSIPPI, NEW MADRID,
 PEMISCOT, PERRY, REYNOLDS, RIPLEY, ST. CHARLES, ST. FRANCOIS,
 ST. LOUIS (City and County), STE. GENEVIEVE, SCOTT, STODDARD,
 WARREN, WASHINGTON AND WAYNE COUNTIES

	Rates	Fringes
Electricians.....	\$ 40.61	27.06

 ELEC0002-001 01/01/2022

ADAIR, AUDRAIN, BOONE, CALLAWAY, CAMDEN, CARTER, CHARITON,
 CLARK, COLE, COOPER, CRAWFORD, DENT, FRANKLIN, GASCONADE,
 HOWARD, HOWELL, IRON, JEFFERSON, KNOX, LEWIS, LINCON, LINN,
 MACON, MARIES, MARION, MILLER, MONITEAU, MONROE, MONTGOMERY,
 MORGAN, OREGON, OSAGE, PERRY, PHELPS, PIKE, PULASKI, PUTNAM,
 RALLS, RANDOLPH, REYNOLDS, RIPLEY, ST. CHARLES, ST. FRANCOIS,
 ST. LOUIS (City and County), STE. GENEVIEVE, SCHUYLER,
 SCOTLAND, SHANNON, SHELBY, SULLIVAN, TEXAS, WARREN AND
 WASHINGTON COUNTIES

	Rates	Fringes
Line Construction:		
Equipment Operator.....	\$ 42.67	22.58
Groundman & Truck Driver....	\$ 32.60	18.90
Lineman & Cable Splicer.....	\$ 49.71	25.15

 ELEC0053-004 08/01/2021

	Rates	Fringes
Line Construction: (ANDREW, ATCHINSON, BARRY, BARTON, BUCHANAN, CALDWELL, CEDAR, CHRISTIAN, CLINTON, DADE, DALLAS, DAVIES,, DEKALB, DOUGLAS, GENTRY, GREENE, GRUNDY, HARRISON, HICKORY, HOLT, JASPER, LACLEDE, LAWRENCE, LIVINGSTON, MCDONALD, MERCER, NEWTON, NODAWAY, OZARK, POLK, ST. CLAIR, STONE, TANEY, VERNON, WEBSTER, WORTH AND WRIGHT COUNTIES)		

Addendum No. 1
Item No. 1

Groundman Powderman.....	\$ 33.58	18.34
Groundman.....	\$ 31.33	17.60
Lineman Operator.....	\$ 45.60	22.48
Lineman.....	\$ 50.31	24.11

Line Construction; (BATES,
BENTON, CARROLL, CASS, CLAY,
HENRY, JACKSON, JOHNSON,
LAFAYETTE, PETTIS, PLATTE,
RAY AND SALINE COUNTIES)

Groundman Powderman.....	\$ 33.58	18.34
Groundman.....	\$ 31.33	17.60
Lineman Operator.....	\$ 45.60	22.48
Lineman.....	\$ 50.31	24.11

ELEC0095-001 06/01/2020

BARRY, BARTON, CEDAR, DADE, JASPER, LAWRENCE, MCDONALD, NEWTON,
ST CLAIR, AND VERNON COUNTIES

	Rates	Fringes
--	-------	---------

Electricians:

Cable Splicers.....	\$ 25.40	12.19
Electricians.....	\$ 27.43	17.44

ELEC0124-007 09/28/2021

BATES, BENTON, CARROLL, CASS, CLAY, COOPER, HENRY, JACKSON,
JOHNSON, LAFAYETTE, MORGAN, PETTIS, PLATTE, RAY AND SALINE
COUNTIES:

	Rates	Fringes
--	-------	---------

Electricians.....	\$ 41.79	23.67
-------------------	----------	-------

ELEC0257-003 03/01/2021

AUDRAIN (Except Cuivre Township), BOONE, CALLAWAY, CAMDEN,
CHARITON, COLE, CRAWFORD, DENT, GASCONADE, HOWARD, MARIES,
MILLER, MONITEAU, OSAGE, PHELPS AND RANDOLPH COUNTIES

	Rates	Fringes
--	-------	---------

Electricians:

Cable Splicers.....	\$ 30.42	16.085
Electricians.....	\$ 34.60	16.38

ELEC0350-002 12/01/2019

ADAIR, AUDRAIN (East of Highway 19), CLARK, KNOX, LEWIS, LINN,
MACON, MARION, MONROE, MONTGOMERY, PIKE, PUTNAM, RALLS,
SCHUYLER, SCOTLAND, SHELBY AND SULLIVAN COUNTIES

	Rates	Fringes
--	-------	---------

Electricians.....	\$ 32.50	17.65
-------------------	----------	-------

ELEC0453-001 09/01/2020

	Rates	Fringes
--	-------	---------

Electricians:

CHRISITAN, DALLAS,	
DOUGLAS, GREENE, HICKORY,	
HOWELL, LACLEDE, OREGON,	
OZARK, POLK, SHANNON,	
WEBSTER and WRIGHT COUNTIES..	\$ 28.10 15.81
PULASKI and TEXAS COUNTIES..	\$ 32.76 16.27
STONE and TANEY COUNTIES....	\$ 23.89 14.99

Addendum No. 1 Item No. 1
--

ELEC0545-003 06/01/2021

ANDREW, BUCHANAN, CLINTON, DEKALB, ATCHISON, HOLT, MERCER,
 GENTRY, HARRISON, DAVIESS, GRUNDY, WORTH, LIVINGSTON, NODAWAY,
 AND CALDWELL COUNTIES

	Rates	Fringes
--	-------	---------

Electricians:.....	\$ 34.00	18.65
--------------------	----------	-------

ELEC0702-004 12/30/2019

BOLLINGER, BUTLER, CAPE GIRARDEAU, DUNKLIN, MADISON,
 MISSISSIPPI, NEW MADRID, PEMISCOT, SCOTT, STODDARD AND WAYNE
 COUNTIES

	Rates	Fringes
--	-------	---------

Line Construction:

Groundman - Class A.....	\$ 30.31	29% + 7.75
Groundman-Equipment		
Operator Class II (all		
other equipment).....	\$ 38.46	29% + 7.75
Heavy-Equipment Operator		
Class I (all crawler type		
equipment D-4 and larger)...	\$ 43.88	29% + 7.75
Lineman.....	\$ 53.51	29% + 7.75

ENGI0101-001 05/01/2020

ANDREW, ATCHISON, BATES, BENTON, BUCHANAN, CALDWELL, CARROLL,
 CHARITON, CLINTON, COOPER, DAVIESS, DEKALB, GENTRY, GRUNDY,
 HARRISON, HENRY, HOLT, HOWARD, JOHNSON, LAFAYETTE, LINN,
 LIVINGSTON, MERCER, NODAWAY, PETTIS, SALINE, SULLIVAN AND WORTH
 COUNTIES

	Rates	Fringes
--	-------	---------

Power equipment operators:

GROUP 1.....	\$ 34.73	18.20
GROUP 2.....	\$ 34.33	18.20
GROUP 3.....	\$ 32.33	18.20

POWER EQUIPMENT OPERATORS CLASSIFICATIONS

GROUP 1: Asphalt roller operator, finish; asphalt paver and
 spreader; asphalt plant operator; auto grader or trimmer or
 sub-grader; backhoe; blade operator (all types); boilers -
 2; booster pump on dredge; bulldozer operator; boring
 machine (truck or crane mounted); clamshell operator;
 concrete mixer paver; concrete plant operator; concrete
 pump operator; crane operator; derrick or derrick trucks;
 ditching machine; dragline operator; dredge engineman;

Addendum No. 1

Item No. 1

dredge operator; drill cat with compressor mounted (self-contained) or similar type self-propelled rotary drill (not air tract); drilling or boring machine (rotary-self-propelled); finishing machine operator; greaser; high loader-fork lift-skid loader (all types); hoisting engineer (2 active drums); locomotive operator (standard gauge); mechanics and welders (field and plants); mucking machine operator; pile drive operator; pitman crane or boom truck (all types); push cat; quad track; scraper operators (all types); shovel operator; sideboom cats; side discharge spreader; skimmer scoop operators; slip form paver operator (CMI, Rex, Gomeco or equal); la tourneau rooter (all tiller types); tow boat operator; truck crane; wood and log chippers (all types).

GROUP 2: A-frame truck operator; articulated dump truck; back filler operator; boilers (1); chip spreader; churn drill operator; compressor; concrete mixer operator, skip loader; concrete saws (self-propelled); conveyor operator; crusher operator; distributor operator; elevating grader operator; farm tractor (all attachments); fireman rig; float operator; form grade operator; hoisting engine (one drum); maintenance operator; multiple compactor; pavement breaker, self-propelled hydra-hammer (or similar type); paymill operator; power shield; pumps; roller operator (with or without blades); screening and washing plant; self-propelled street broom or sweeper; siphons and jets; straw blower; stump cutting machine; siphons and jets; tank car heater operator (combination boiler and booster); welding machine; vibrating machine operator (not hand held); welding machine.

GROUP 3: (a) Oiler;

(b) Oiler driver

(c) Mechanic.

HOURLY PREMIUMS:

THE FOLLOWING CLASSIFICATIONS SHALL RECEIVE (\$.25) ABOVE GROUP 1 RATE: Dragline operator - 3 yds. & over; shovel 3 yds. & over; clamshell 3 yds. & over; Crane, rigs or piledrivers, 100' of boom or over (incl. jib.), hoist - each additional active drum over 2 drums

THE FOLLOWING CLASSIFICATIONS SHALL RECEIVE (\$.50) ABOVE GROUP 1 RATE: Tandem scoop operator; crane, rigs or piledrivers 150' to 200' of boom (incl. jib.)

THE FOLLOWING CLASSIFICATIONS SHALL RECEIVE (\$.75) ABOVE GROUP 1 RATE: Crane rigs, or piledrivers 200 ft. of boom or over (including jib.)

ENGI0101-005 04/01/2020

CASS, CLAY, JACKSON, PLATTE AND RAY COUNTIES

	Rates	Fringes
Power equipment operators:		
GROUP 1.....	\$ 37.02	19.89
GROUP 2.....	\$ 35.98	19.89
GROUP 3.....	\$ 31.51	19.89
GROUP 4.....	\$ 34.86	19.89

POWER EQUIPMENT OPERATORS CLASSIFICATIONS

Addendum No. 1
Item No. 1

GROUP 1: Asphalt roller operator, finish; asphalt paver and spreader; asphalt plant operator; auto grader or trimmer or sub-grader; backhoe; blade operator (all types); boilers-2; booster pump on dredge; boring machine (truck or crane mounted); bulldozer operator; clamshell operator; concrete cleaning decontamination machine operator; concrete mixer paver; concrete plant operator; concrete pump operator; crane operator; derrick or derrick trucks; ditching machine; dragline operator; dredge engineman; dredge operator; drillcat with compressor mounted (self-contained) or similar type self propelled rotary drill (not air tract); drilling or boring machine (rotary - self-propelled); finishing machine operator; greaser; heavy equipment robotics operator/mechanic; horizontal directional drill operator; horizontal directional drill locator; loader-forklift - skid loader (all types); hoisting engineer (2 active drums); locomotive operator (standard guage); master environmental maintenance mechanic; mechanics and welders (field and plants); mucking machine operator; piledrive operator; pitman crane or boom truck (all types); push cat; quad-track; scraper operators (all types); shovel operator; side discharge spreader; sideboom cats; skimmer scoop operator; slip-form paver (CMI, REX, Gomaco or equal); la tourneau rooter (all tiller types); tow boat operator; truck crane; ultra high pressure waterjet cutting tool system operator/mechanic; vacuum blasting machine operator/mechanic; wood and log chippers (all types)

GROUP 2: "A" Frame truck operator; back filler operator; boilers (1); chip spreader; churn drill operator; concrete mixer operator, skip loader; concrete saws (self-propelled); conveyor operator; crusher operator; distributor operator; elevating grader operator; farm tractor (all attachments); fireman rig; float operator; form grader operator; hoisting engine (1 drum); maintenance operator; multiple compactor; pavement breaker, self-propelled hydra- hammer (or similar type); power shield; paymill operator; pumps; siphons and jets; stump cutting machine; tank car heater operator (combination boiler and booster); compressor; roller operator (with or without blades); screening and washing plant; self-propelled street broom or sweeper; straw blower; tank car heater operator (combination boiler and booster); vibrating machine operator (not hand held)

GROUP 3: Oilers

GROUP 4: Oiler Driver (All Types)

FOOTNOTE:

HOURLY PREMIUMS FOLLOWING CLASSIFICATIONS SHALL RECEIVE (\$1.00) ABOVE GROUP 1 RATE:

Clamshells - 3 yd. capacity or over; Cranes or rigs, 80 ft. of boom or over (including jib); Draglines, 3 yd. capacity or over;

Piledrivers 80 ft. of boom or over (including jib);

Shovels & backhoes, 3 yd. capacity or over.

 ENGI0101-022 05/01/2019

BARRY, BARTON, CAMDEN, CEDAR, CHRISTIAN, DADE, DALLAS, DOUGLAS, GREENE, HICKORY, JASPER, LACLEDE, LAWRENCE, MCDONALD, NEWTON,

OZARK, POLK, ST. CLAIR, STONE, TANEY, VERNON, WEBSTER AND
WRIGHT COUNTIES and CITY OF SPRINGFIELD

Addendum No. 1 Item No. 1

	Rates	Fringes
Power equipment operators:		
GROUP 1.....	\$ 31.72	14.88
GROUP 2.....	\$ 31.37	14.88
GROUP 3.....	\$ 31.17	14.88
GROUP 4.....	\$ 29.12	14.88

POWER EQUIPMENT OPERATORS CLASSIFICATIONS

GROUP 1: Asphalt finishing machine & trench widening spreader; asphalt plant console operator; autograder; automatic slipform paver; backhoe; blade operator - all types; boat operator - tow; boilers-2; central mix concrete plant operator; clamshell operator; concrete mixer paver; crane operator; derrick or derrick trucks; ditching machine; dozer operator; dragline operator; dredge booster pump; dredge engineman; dredge operator; drill cat with compressor mounted on cat; drilling or boring machine rotary self-propelled; highloader; hoisting engine - 2 active drums; launch hammer wheel; locomotive operator; - standard gauge; mechanic and welders; mucking machine; off-road trucks; piledriver operator; pitman crane operator; push cat operator; quad trac; scoop operator - all types; shovel operator; sideboom cats; skimmer scoop operators; trenching machine operator; truck crane.

GROUP 2: A-frame; asphalt hot-mix silo; asphalt plant fireman (drum or boiler); asphalt plant man; asphalt plant man; asphalt plant mixer operator; asphalt roller operator; backfiller operator; barber-greene loader; boat operator (bridges and dams); chip spreader; concrete mixer operator - skip loader; concrete plant operator; concrete pump operator; crusher operator; dredge oiler; elevating grader operator; fork lift; greaser-fleet; hoisting engine - 1; locomotive operator - narrow gauge; multiple compactor; pavement breaker; powerbroom - self-propelled; power shield; rooter; side discharge concrete spreader; slip form finishing machine; stumpcutter machine; throttle man; tractor operator (over 50 h.p.); winch truck.

GROUP 3: Boilers - 1; chip spreader (front man); churn drill operator; clef plane operator; concrete saw operator (self-propelled); curb finishing machine; distributor operator; finishing machine operator; flex plane operator; float operator; form grader operator; pugmill operator; roller operator, other than high type asphalt; screening & washing plant operator; siphons & jets; sub-grading machine operator; spreader box operator, self-propelled (not asphalt); tank car heater operator (combination boiler & booster); tractor operator (50 h.p. or less); Ulmac, Ulric or similar spreader; vibrating machine operator, not hand;

GROUP 4: Grade checker; Oiler; Oiler-Driver

HOURLY PREMIUMS:

The following classifications shall receive \$.25 above GROUP 1 rate:
Clamshells - 3 yds. or over; Cranes - Rigs or Piledrivers, 100 ft. of boom or over (including jib);

Addendum No. 1
Item No. 1

Draglines - 3 yds. or over; Hoists - each additional active drum over 2 drums; Shovels - 3 yds. or over;

The following classifications shall receive \$.50 above GROUP 1 rate:

Tandem scoop operator; Cranes - Rigs or Piledrivers, 150 ft. to 200 ft. of boom (including jib); Tandem scoop.

The following classifications shall receive \$.75 above GROUP 1 rate:

Cranes - Rigs or Piledrivers, 200 ft. of boom or over (including jib.).

 * ENGI0513-004 05/05/2021

FRANKLIN, JEFFERSON, LINCOLN, ST CHARLES, AND WARREN COUNTIES

	Rates	Fringes
Power equipment operators:		
GROUP 1.....	\$ 37.11	28.36
GROUP 2.....	\$ 37.11	28.36
GROUP 3.....	\$ 35.21	28.36
GROUP 4.....	\$ 31.75	28.36

POWER EQUIPMENT OPERATORS CLASSIFICATIONS

GROUP 1: Backhoe, Cable; Backhoe, Hydraulic (2 cu yds bucket and under regardless of attachment, one oiler for 2 or 3, two oilers for 4 through 6); Backhoe, Hydraulic over 2 cu yds; Cableway; Crane, Crawler or Truck; Crane, Hydraulic - Truck or Cruiser mounted, 16 tons and over; Crane, Locomotive; crane with boom including jib over 100 ft from pin to pin; Crane using rock socket tool; Derrick, Steam; Derrick Car and Derrick Boat; Dragline, 7 cu yds and over; Dredge; Gradall, Crawler or tire mounted; Locomotive, Gas, Steam & other powers; Pile Driver, Land or Floating; Scoop, Skimmer; Shovel, Power (Electric, Gas, Steam or other powers); Shovel, Power (7 cu yds and over); Switch Boat; Whirley; Air Tugger with air compressor; Anchor Placing Barge; Asphalt Spreader; Athey Force Feeder Loader, self-propelled; Backfilling Machine; Boat Operator - Push Boat or Tow Boat (job site); Boiler, High Pressure Breaking in Period; Boom Truck, Placing or Erecting; Boring Machine, Footing Foundation; Bullfloat; Cherry Picker; Combination Concrete Hoist and Mixer (such as Mixermobile); Compressor, Two 125 CFM and under; Compressor, Two through Four over 125 CFM; Compressor when operator runs throttle; Concrete Breaker (Truck or Tractor mounted); Concrete Pump (such as Pumpcrete machine); Concrete Saw (self-propelled); Concrete Spreader; Conveyor, Large (not selfpropelled) hoisting or moving brick and concrete into, or into and on floor level, one or both; Crane, Climbing (such as Linden); Crane, Hydraulic - Rough Terrain, self-propelled; Crane, Hydraulic - Truck or Cruiser mounted - under 16 tons; Drilling machine - Self-powered, used for earth or rock drilling or boring (wagon drills and any hand drills obtaining power from other sources including concrete breakers, jackhammers and Barco equipment no engineer required); Elevating Grader; Engine Man, Dredge; Excavator or Powerbelt Machine; Finishing Machine, self-propelled oscillating screed; Forklift; Generators, Two through Six 30 KW or over; Grader, Road with power blade; Greaser; Highlift; Hoist, Concrete and Brick (Brick cages or concrete skips operating

Addendum No. 1

Item No. 1

or on tower, Towermobile, or similar equipment); Hoist, Three or more drums in use; Hoist, Stack; Hydro-Hammer; Lad-A-Vator, hoisting brick or concrete; Loading Machine such as Barber-Greene; Mechanic on job site

GROUP 2: Air Tugger with plant air; Boiler (for power or heating shell of building or temporary enclosures in connection with construction work); Boiler, Temporary; Compressor, One over 125 CFM; Compressor, truck mounted; Conveyor, Large (not self- propelled); Conveyor, Large (not self- propelled) moving brick and concrete (distributing) on floor level; Curb Finishing Machine; Ditch Paving Machine; Elevator (outside); Endless Chain Hoist; Fireman (as required); Form Grader; Hoist, One Drum regardless of size (except brick or concrete); Lad-A-Vator, other hoisting; Manlift; Mixer, Asphalt, over 8 cu ft capacity; Mixer, one bag capacity or less; Mixer, without side loader, two bag capacity or more; Mixer, with side loader, regardless of size, not Paver; Mud Jack (where mud jack is used in conjunction with an air compressor, operator shall be paid \$.55 per hour in addition to his basic hourly rate for covering both operations); Pug Mill operator; Pump, Sump - self powered, automatic controlled over 2"; Scissor Lift (used for hoisting); Skid Steer Loader; Sweeper, Street; Tractor, small wheel type 50 HP and under with grader blade and similar equipment; Welding Machine, One over 400 amp; Winch, operating from truck

GROUP 3: Boat operator - outboard motor, job site; Conveyors (such as Con-Vay-It) regardless of how used; Elevator (inside); Heater operator, 2 through 6; Sweeper, Floor

GROUP 4: Crane type

HOURLY PREMIUMS:

Backhoe, Hydraulic 2 cu yds or less without oiler - \$2.00;
 Crane, climbing (such as Linden) - \$.50;
 Crane, Pile Driving and Extracting - \$.50
 Crane with boom (including job) over
 100 ft from pin to pin - add \$.01 per foot
 to maximum of \$4.00);
 Crane, using rock socket tool - \$.50;
 Derrick, diesel, gas or electric hoisting material
 and erecting steel (150 ft or more above ground) - \$.50;
 Dragline, 7 cu yds and over - \$.50;
 Hoist, Three or more drums in use - \$.50;
 Scoop, Tandem - \$.50;
 Shovel, Power - 7 cu yds and over - \$.50;
 Tractor, Tandem Crawler - \$.50;
 Tunnel, man assigned to work in tunnel or
 tunnel shaft - \$.50;
 Wrecking, when machines are working on
 second floor or higher - \$.50

 ENG10513-006 05/01/2021

ADAIR, AUDRAIN, BOLLINGER, BOONE, BUTLER, CALLAWAY, CAPE
 GIRARDEAU, CARTER, CLARK, COLE, CRAWFORD, DENT, DUNKLIN,
 GASCONADE, HOWELL, IRON, KNOX, LEWIS, MACON, MADISON, MARIES,
 MARION, MILLER, MISSISSIPPI, MONITEAU, MONROE, MONTGOMERY,
 MORGAN, NEW MADRID, OREGON, OSAGE, PEMISCOT, PERRY, PHELPS,
 PIKE, PULASKI, PUTNAM, RALLS, RANDOLPH, REYNOLDS, RIPLEY, ST.
 FRANCOIS, STE. GENEVIEVE, SCHUYLER, SCOTLAND, SCOTT, SHANNON,

SHELBY, STODDARD, TEXAS, WASHINGTON, AND WAYNE COUNTIES

Addendum No. 1
Item No. 1

	Rates	Fringes
Power equipment operators:		
GROUP 1.....	\$ 32.14	28.22
GROUP 2.....	\$ 31.79	28.22
GROUP 3.....	\$ 31.59	28.22
GROUP 4.....	\$ 27.94	28.22

POWER EQUIPMENT OPERATORS CLASSIFICATIONS

GROUP 1: Asphalt finishing machine & trench widening spreader, asphalt plant console operator; autograder; automatic slipform paver; back hoe; blade operator - all types; boat operator tow; boiler two; central mix concrete plant operator; clam shell operator; concrete mixer paver; crane operator; derrick or derrick trucks; ditching machine; dozer operator; dragline operator; dredge booster pump; dredge engineman; dredge operator; drill cat with compressor mounted on cat; drilling or boring machine rotary self-propelled; highloader; hoisting engine 2 active drums; launchhammer wheel; locomotive operator standrad guage; mechanics and welders; mucking machine; piledriver operator; pitman crane operator; push cat operator; quad-trac; scoop operator; sideboom cats; skimmer scoop operator; trenching machine operator; truck crane, shovel operator.

GROUP 2: A-Frame; asphalt hot-mix silo; asphalt roller operator asphalt plant fireman (drum or boiler); asphalt plant man; asphalt plant mixer operator; backfiller operator; barber-greene loader; boat operator (bridge & dams); chip spreader; concrete mixer operator skip loader; concrete plant operator; concrete pump operator; dredge oiler; elevating graded operator; fork lift; grease fleet; hoisting engine one; locomotive operator narrow guage; multiple compactor; pavement breaker; powerbroom self-propelled; power shield; rooter; slip-form finishing machine; stumpcutter machine; side discharge concrete spreader; throttleman; tractor operator (over 50 hp); winch truck; asphalt roller operator; crusher operator.

GROUP 3: Spreader box operator, self-propelled not asphalt; tractor operator (50 h.p. or less); boilers one; chip spreader (front man); churn drill operator; compressor over 105 CFM 2-3 pumps 4" & over; 2-3 light plant 7.5 KWA or any combination thereof; clef plane operator; compressor maintenance operator 2 or 3; concrete saw operator (self-propelled); curb finishing mancine; distributor operator; finishing machine operator; flex plane operator; float operator; form grader operator; pugmill operator; riller operator other than high type asphalt; screening & washing plant operator; siphons & jets; subgrading machine operator; tank car heater (combination boiler & booster); ulmac, ulric or similar spreader; vibrating machine operator; hydrobroom.

GROUP 4: Oiler; grout machine; oiler driver; compressor over 105 CFM one; conveyor operator one; maintenance operator; pump 4" & over one.

FOOTNOTE: HOURLY PREMIUMS

Backhoe hydraulic, 2 cu. yds. or under Without oiler - \$2.00
 Certified Crane Operator - \$1.50;
 Certified Hazardous Material Operator \$1.50;
 Crane, climbing (such as Linden) - \$0.50;
 Crane, pile driving and extracting - \$0.50;
 Crane, with boom (including jib) over 100' from pin to pin
 add \$0.01 per foot to maximum of \$4.00;
 Crane, using rock socket tool - \$0.50;
 Derrick, diesel, gas or electric, hoisting material and
 erecting steel (150' or more above the ground) - \$0.50;
 Dragline, 7 cu. yds, and over - \$0.50;
 Hoist, three or more drums in use - \$0.50; Scoop, Tandem -
 \$0.50;
 Shovel, power - 7 cu. yds. or more - \$0.50;
 Tractor, tandem crawler - \$0.50;
 Tunnel, man assigned to work in tunnel or tunnel shaft -
 \$0.50;
 Wrecking, when machine is working on second floor or higher -
 \$0.50;

Addendum No. 1 Item No. 1

 * ENG10513-007 05/05/2021

ST. LOUIS CITY AND COUNTY

	Rates	Fringes
Power equipment operators:		
GROUP 1.....	\$ 37.11	28.36
GROUP 2.....	\$ 37.11	28.36
GROUP 3.....	\$ 35.21	28.36
GROUP 4.....	\$ 31.75	28.36

POWER EQUIPMENT OPERATORS CLASSIFICATIONS

GROUP 1: Backhoe, cable or hydraulic; cableway; crane crawler or truck; crane, hydraulic-truck or cruiser mounted 16 tons & over; crane locomotive; derrick, steam; derrick car & derrick boat; dragline; dredge; gradall, crawler or tire mounted; locomotive, gas, steam & other powers; pile driver, land or floating; scoop, skimmer; shovel, power (steam, gas, electric or other powers); switch boat; whirley.

GROUP 2: Air tugger w/air compressor; anchor-placing barge; asphalt spreader; atney force feeder loader (self-propelled); backfilling machine; backhoe-loader; boat operator-push boat or tow boat (job site); boiler, high pressure breaking in period; boom truck, placing or erecting; boring machine, footing foundation; bull- float; cherry picker; combination concrete hoist & mixer (such as mixer mobile); compressor (when operator runs throttle); concrete breaker (truck or tractor mounted); concrete pump, such as pump-crete machine; concrete saw (self-propelled), concrete spreader; conveyor, large (not self-propelled), hoisting or moving brick and concrete into, or into and on floor level, one or both; crane, hydraulic-rough terrain, self-propelled; crane hydraulic-truck or cruiser mounted-under 16 tons; drilling machines, self-powered use for earth or rock drilling or boring (wagon drills and any hand drills obtaining power from other sources including concrete breakers, jackhammers and barco equipment-no engineer required); elevating grader; engineman, dredge; excavator or powerbelt machine; finishing machine, self-propelled oscillating screed; forklift; grader, road

Addendum No. 1

Item No. 1

with power blade; highlift. greaser; hoist, stack, hydro-hammer; loading machine (such as barber-greene); machanic, on job site; mixer, pipe wrapping machines; plant asphalt; plant, concrete producing or ready-mix job site; plant heating-job site; plant mixing-job site; plant power, generating-job site; pumps, two through six self-powered over 2"; pumps, electric submersible, two through six, over 4"; quad-track; roller, asphalt, top or sub-grade; scoop, tractor drawn; spreader box; sub-grader; tie tamper; tractor-crawler, or wheel type with or without power unit, power take-offs and attachments regardless of size; trenching machine; tunnel boring machine; vibrating machine automatic, automatic propelled; welding machines (gasoline or diesel) two through six; well drilling machine

GROUP 3: Conveyor, large (not self-propelled); conveyor, large (not self-propelled) moving brick and concrete distributing) on floor level; mixer two or more mixers of one bag capacity or less; air tugger w/plant air; boiler, for power or heating on construction projects; boiler, temporary; compressor (mounted on truck; curb finishing machine; ditch paving machine; elevator; endless chain hoist; form grader; hoist, one drum regardless of size; lad-a-vator; manlift; mixer, asphalt, over 8 cu. ft. capacity, without side loader, 2 bag capacity or more; mixer, with side loader, regardless of size; pug mill operator; pump, sump-self-powered, automatic controlled over 2" during use in connection with construction work; sweeper, street; welding machine, one over 400 amp.; winch operating from truck; scissor lift (used for hoisting); tractor, small wheel type 50 h.p. & under with grader blade & similar equipment; Oiler on dredge and on truck crane.

GROUP 4: Boat operator-outboard motor (job site); conveyor (such as con-vay-it) regardless of how used; sweeper, floor

HOURLY PREMIUMS:

Backhoe, hydraulic	
2 cu. yds. or under without oiler	\$2.00
Certified Crane Operator	1.50
Certified Hazardous Material Operator	1.50
Crane, climbing (such as Linden)	.50
Crane, pile driving and extracting	.50
Crane, with boom (including jib) over 100' (from pin to pin) add \$.01 per foot to maximum of	4.00
Crane, using rock socket tool	.50
Derrick, diesel, gas or electric, hoisting material and erecting steel (150' or more above ground)	.50
Dragline, 7 cu. yds. and over	.50
Hoist, three (3) or more drums in use	.50
Scoop, Tandem	.50
Shovel, power - 7 cu. yds. or more	.50
Tractor, tandem crawler	.50
Tunnel, man assigned to work in tunnel or tunnel shaft	.50
Wrecking, when machine is working on second floor or higher	.50

IRON0010-012 04/01/2021

Rates

Fringes

Ironworkers:

Addendum No. 1
Item No. 1

ANDREW, BARTON, BENTON,
 CAMDEN, CEDAR, CHARITON,
 CHRISTIAN, COOPER, DADE,
 DALLAS, DAVIESS, DE KALB,
 GENTRY, GREENE, GRUNDY,
 HARRISON, HICKORY, HOLT,
 HOWARD, LACLEDE, LINN,
 LIVINGSTON, MERCER,
 MONITEAU, MORGAN, NODAWAY,
 POLK, PUTNAM, RANDLOPH,
 ST. CLAIR, SULLIVAN,
 TANEY, VERNON, WEBSTER,
 WRIGHT and WORTH Counties
 and portions of ADAIR,
 BOONE, MACON, MILLER and
 RANDOLPH Counties.....\$ 31.50 31.99

ANDREW, BARTON, BENTON,
 CAMDEN, CEDAR, CHARITON,
 CHRISTIAN, COOPER, DADE,
 DALLAS, DAVIESS, DE KALB,
 GENTRY, GREENE, GRUNDY,
 HARRISON, HICKORY, HOLT,
 HOWARD, LACLEDE, LINN,
 LIVINGSTON, MERCER,
 MONITEAU, MORGAN, NODAWAY,
 PETTIS, POLK, PUTNAM,
 RANDLOPH, ST. CLAIR,
 SULLIVAN, TANEY, VERNON,
 WEBSTER, WRIGHT and WORTH
 Counties and portions of
 ADAIR, BOONE, MACON,
 MILLER and RANDOLPH
 Counties.....\$ 30.55 30.44

ATCHISON, BATES, BUCHANAN,
 CALDWELL, CARROLL, CASS,
 CLAY, CLINTON, HENRY,
 JACKSON, JOHNSON,
 LAFAYETTE, PETTIS, PLATTE,
 SALINE, AND RAY COUNTIES....\$ 34.50 31.99

IRON0321-002 08/01/2021

DOUGLAS, HOWELL and OZARK COUNTIES

	Rates	Fringes
Ironworker.....	\$ 23.00	19.61

IRON0396-004 08/04/2021

ST. LOUIS (City and County), ST. CHARLES, JEFFERSON, IRON,
 FRANKLIN, LINCOLN, WARREN, WASHINGTON, ST. FRANCOIS, STE.
 GENEVIEVE, and REYNOLDS Counties; and portions of MADISON,
 PERRY, BOLLINGER, WAYNE, and CARTER Counties

	Rates	Fringes
Ironworker.....	\$ 36.71	28.96

IRON0396-009 08/04/2021

AUDRAIN, CALLAWAY, COLE, CRAWFORD, DENT, GASCONADE, MARIES,
 MONTGOMERY, OSAGE, PHELPS, PIKE, PULASKI, TEXAS and WRIGHT

Counties; and portions of BOONE, CAMDEN, DOUGLAS, HOWELL,
LACLEDE, MILLER, MONROE, OREGON, SHANNON and RALLS Counties

Addendum No. 1 Item No. 1

	Rates	Fringes
Ironworker.....	\$ 32.24	28.96

IRON0577-005 08/01/2021		

ADAIR, CLARK, KNOX, LEWIS, MACON, MARION, MONROE, RALLS,
SCHUYLER, SCOTLAND, AND SHELBY COUNTIES

	Rates	Fringes
Ironworker.....	\$ 28.00	24.85

IRON0584-004 06/01/2021		

BARRY, JASPER, LAWRENCE, MCDONALD, NEWTON AND STONE Counties

	Rates	Fringes
Ironworkers:.....	\$ 26.25	15.35

IRON0782-003 08/01/2021		

CAPE GIRARDEAU, MISSISSIPPI, NEW MADRID, SCOTT, & STODDARD
Counties; and portions of BOLLINGER, BUTLER, CARTER, DUNKLIN,
MADISON, PEMISCOT, PERRY, RIPLEY, and WAYNE Counties

	Rates	Fringes
Ironworkers:		
Locks, Dams, Bridges and other major work on the Mississippi and Ohio River only.....	\$ 35.13	28.27
All Other Work.....	\$ 29.34	24.12

LAB00042-003 03/04/2021		

ST. LOUIS (City and County)

	Rates	Fringes
LABORER		
Plumber Laborer.....	\$ 35.00	16.37

LAB00042-005 03/04/2021		

ST. LOUIS (City and County)

	Rates	Fringes
LABORER		
Dynamiter, Powderman.....	\$ 35.00	16.37
Laborers, Flaggers.....	\$ 35.00	16.37
Wrecking.....	\$ 35.00	16.37

LAB00424-002 05/01/2021		

	Rates	Fringes
--	-------	---------

Addendum No. 1
Item No. 1
LABORER

ADAIR, AUDRAIN, BOONE,		
CALLAWAY, CHARITON, CLARK,		
COLE, COOPER, HOWARD,		
IRON, KNOX, LEWIS, LINN,		
MACON, MADISON, MARION,		
MILLER, MONITEAU, MONROE,		
PERRY, PIKE, PUTNAM,		
RALLS, RANDOLPH, REYNOLDS,		
ST. FRANCOIS, STE.		
GENEVIEVE, SCHUYLER,		
SCOTLAND, SHELBY AND		
SULLIVAN COUNTIES		
GROUP 1.....	\$ 31.47	14.97
GROUP 2.....	\$ 31.47	14.97
BOLLINGER, BUTLER, CAPE		
GIRARDEAU, CARTER,		
CRAWFORD, DENT, DUNKLIN,		
GASCONADE, HOWELL, MARIES,		
MISSISSIPPI, NEW MADRID,		
OREGON, OSAGE, PEMISCOT,		
PHELPS, PULASKI, RIPLEY,		
SCOTT, SHANNON, STODDARD,		
TEXAS, WASHINGTON AND		
WAYNE COUNTIES		
GROUP 1.....	\$ 31.47	14.97
GROUP 2.....	\$ 31.47	14.97
FRANKLIN COUNTY		
GROUP 1.....	\$ 33.69	14.97
GROUP 2.....	\$ 34.29	14.97
JEFFERSON COUNTY		
GROUP 1.....	\$ 33.74	14.97
GROUP 2.....	\$ 34.34	14.97
LINCOLN, MONTGOMERY AND		
WARREN COUNTIES		
GROUP 1.....	\$ 32.49	14.97
GROUP 2.....	\$ 33.09	14.97
ST.CHARLES COUNTY		
GROUP 1.....	\$ 35.16	14.97
GROUP 2.....	\$ 35.16	14.97

LABORERS CLASSIFICATIONS

GROUP 1 - General laborer-flagman, carpenter tenders; salamander Tenders; Dump Man; Ticket Takers; loading trucks under bins, hoppers, and conveyors; track man; cement handler; dump man on earth fill; georgie buggy man; material batch hopper man; spreader on asphalt machine; material mixer man (except on manholes); coffer dams; riprap pavers rock, block or brick; scaffolds over ten feet not self-supported from ground up; skip man on concrete paving; wire mesh setters on concrete paving; all work in connection with sewer, water, gas, gasoling, oil, drainage pipe, conduit pipe, tile and duct lines and all other pipe lines; power tool operator; all work in connection with hydraulic or general dredging operations; form setters, puddlers (paving only); straw blower nozzle man; asphalt plant platform man; chuck tender; crusher feeder; men handling creosote ties or creosote materials; men working with and handling epoxy material; toppler of standing trees; feeder man on wood pulverizers, board and willow mat weavers and cable ties on river work; deck hands; pile dike and revetment work; all laborers working on underground tunnels less than 25 ft. where compressed air

Addendum No. 1
Item No. 1

is not used; abutement and pier hole men working six (6) ft. or more below ground; men working in coffer dams for bridge piers and footing in the river; barco tamper; jackson or any other similar tamp; cutting torch man; liners, curb, gutters, ditch lines; hot mastic kettlemen; hot tar applicator; hand blade operator; mortar men or brick or block manholes; rubbing concrete, air tool operator under 65 lbs.; caulker and lead man; chain or concrete saw under 15 h.p.; signal Gan; Guard rail and sign erectors.

GROUP 2 - Skilled laborers - Vibrator man; asphalt raker; head pipe layer on sewer work; batterboard man on pipe and ditch work; cliff scalers working from bosun's chairs; scaffolds or platforms on dams or power plants over 10 ft. high; air tool operator over 65 lbs.; stringline man on concrete paving; sandblast man; laser beam man; wagon drill; churn drill; air track drill and all other similar type drills, gunite nozzle man; pressure grout man; screed man on asphalt; concrete saw 15 h.p. and over; grade checker; strigline man on electronic grade control; manhole builder; dynamite man; powder man; welder; tunnel man; waterblaster - 1000 psi or over; asbestos and/or hazardous waste removal and/or disposal

 LAB00579-005 05/01/2021

	Rates	Fringes
LABORER (ANDREW, ATCHISON, BUCHANAN, CALDWELL, CLINTON, DAVIESS, DEKALB, GENTRY, GRUNDY, HARRISON, HOLT, LIVINGSTON, MERCER, NODAWAY and WORTH COUNTIES.)		
GROUP 1.....	\$ 27.71	15.92
GROUP 2.....	\$ 28.06	15.92
LABORER (BARRY, BARTON, BATES, BENTON, CAMDEN, CARROLL, CEDAR, CHRISTIAN, DADE, DALLAS, DOUGLAS, GREENE, HENRY. HICKORY, JASPER, JOHNSON, LACLEDE, LAWRENCE, MCDONALD, MORGAN, NEWTON, OZARK, PETTIS, POLK, ST.CLAIR, SALINE, STONE, TANEY, VERNON, WEBSTER and WRIGHT COUNTIES)		
GROUP 1.....	\$ 26.76	15.07
GROUP 2.....	\$ 27.31	15.07
LABORER (LAFAYETTE COUNTY)		
GROUP 1.....	\$ 27.76	14.87
GROUP 2.....	\$ 28.11	14.87

LABORERS CLASSIFICATIONS

GROUP 1: General Laborers - Carpenter tenders; salamander tenders; loading trucks under bins; hoppers & conveyors; track men & all other general laborers; air tool operator; cement handler-bulk or sack; dump man on earth fill; georgie buggy man; material batch hopper man; material mixer man (except on manholes); coffer dams; riprap pavers - rock, block or brick; signal man; scaffolds over ten feet not self-supported from ground up; skipman on concrete

Addendum No. 1
Item No. 1

paving; wire mesh setters on concrete paving; all work in connection with sewer, water, gas, gasoline, oil drainage pipe, conduit pipe, tile and duct lines and all other pipe lines; power tool operator, all work in connection with hydraulic or general dredging operations; puddlers (paving only); straw blower nozzle man; asphalt plant platform man; chuck tender; crusher feeder; men handling creosote ties or creosote materials; men working with and handling epoxy material or materials (where special protection is required); rubbing concrete; topper of standing trees; batter board man on pipe and ditch work; feeder man on wood pulverizers; board and willow mat weavers and cable tiers on river work; deck hands; pile dike and revetment work; all laborers working on underground tunnels less than 25 feet where compressed air is not used; abutment and pier hole men working six (6) feet or more below ground; men working in coffer dams for bridge piers and footings in the river; ditchliners; pressure groutmen; caulker; chain or concrete saw; cliffscalers working from scaffolds, bosuns' chairs or platforms on dams or power plants over (10) feet above ground; mortarmen on brick or block manholes; toxic and hazardous waste work.

GROUP 2: Skilled Laborers - Head pipe layer on sewer work; laser beam man; Jackson or any other similar tamp; cutting torch man; form setters; liners and stringline men on concrete paving, curb, gutters; hot mastic kettleman; hot tar applicator; sandblasting and gunite nozzle men; air tool operator in tunnels; screed man on asphalt machine; asphalt raker; barco tamper; churn drills; air track drills and all similar drills; vibrator man; stringline man for electronic grade control; manhole builders-brick or block; dynamite and powder men; grade checker.

 LAB00663-002 04/01/2021

CASS, CLAY, JACKSON, PLATTE AND RAY COUNTIES

	Rates	Fringes
LABORER		
GROUP 1.....	\$ 31.83	16.68
GROUP 2.....	\$ 33.04	16.68

LABORERS CLASSIFICATIONS

GROUP 1: General laborers, Carpenter tenders, salamander tenders, loading trucks under bins, hoppers and conveyors, track men and all other general laborers, air tool operator, cement handler (bulk or sack), chain or concrete saw, deck hands, dump man on earth fill, Georgie Buggies man, material batch hopper man, scale man, material mixer man (except on manholes), coffer dams, abutments and pier hole men working below ground, riprap pavers rock, black or brick, signal man, scaffolds over ten feet not self-supported from ground up, skipman on concrete paving, wire mesh setters on concrete paving, all work in connection with sewer, water, gas, gasoling, oil, drainage pipe, conduit pipe, tile and duct lines and all other pipelines, power tool operator, all work in connection with hydraulic or general dredging operations, straw blower nozzle man, asphalt plant platform man, chuck tender, crusher feeder, men handling creosote ties on creosote materials, men working with and handling epoxy material or materials

Addendum No. 1
Item No. 1

(where special protection is required), topper of standing trees, batter board man on pipe and ditch work, feeder man on wood pulverizers, board and willow mat weavers and cable tiers on river work, deck hands, pile dike and revetment work, all laborers working on underground tunnels less than 25 feet where compressed air is not used, abutment and pier hole men working six (6) feet or more below ground, men working in coffer dams for bridge piers and footings in the river, ditchliners, pressure groutmen, caulker and chain or concrete saw, cliffscalers working from scaffolds, bosuns' chairs or platforms on dams or power plants over (10) feet above ground, mortarmen on brick or block manholes, signal man.

GROUP 2: Skilled Laborer - spreader or screed man on asphalt machine, asphalt raker, grade checker, vibrator man, concrete saw over 5 hp., laser beam man, barco tamper, jackson or any other similar tamp, wagon driller, churn drills, air track drills and other similar drills, cutting torch man, form setters, liners and stringline men on concrete paving, curb, gutters and etc., hot mastic kettleman, hot tar applicator, hand blade operators, mortar men on brick or block manholes, sand blasting and gunnite nozzle men, rubbing concrete, air tool operator in tunnels, head pipe layer on sewer work, manhole builder (brick or block), dynamite and powder men.

 PAIN0002-002 09/01/2007

CLARK, FRANKLIN, JEFFERSON, LEWIS, LINCOLN, MARION, PIKE, RALLS, ST. CHARLES, ST. LOUIS (CITY & COUNTY), AND WARREN COUNTIES

	Rates	Fringes
Painters:		
Brush and Roller; Taper.....	\$ 28.61	10.24
High work over 60 feet.....	\$ 29.11	10.24
Lead Abatement.....	\$ 29.36	10.24
Pressure Roller; High work under 60 ft.....	\$ 28.86	10.24
Spray & Abrasive Blasting; Water Blasting (Over 5000 PSI).....	\$ 30.61	10.24
Taper (Ames Tools & Bazooka).....	\$ 30.21	10.24

 PAIN0002-006 04/01/2020

ADAIR, AUDRAIN, BOONE, CALLAWAY, CHARITON, COLE, GASCONADE, HOWARD, KNOX, LINN, MACON, MONROE, MONTGOMERY, OSAGE, PUTNAM, RANDOLPH, SCHUYLER, SCOTLAND, SHELBY AND SULLIVAN COUNTIES and the City of Booneville.

	Rates	Fringes
Painters:		
Bridges, Dams, Locks or Powerhouses.....	\$ 26.64	13.98
Brush and Roll; Taping, Paperhanging.....	\$ 24.64	13.98
Epoxy or Any Two Part		

Addendum No. 1
Item No. 1

Coating; Sandblasting; Stage or other Aerial Work - Platforms over 50 feet high; Lead Abatement.....\$ 25.64	13.98
Spray; Structural Steel (over 50 feet).....\$ 24.64	13.98
Tapers using Ames or Comparable Tools.....\$ 25.39	13.98

 PAIN0003-004 04/01/2019

CASS, CLAY, CLINTON, JACKSON, JOHNSON, LAFAYETTE, PLATTE & RAY
 COUNTIES

Rates	Fringes
-------	---------

Painters:

Bridgeman; Lead Abatement; Sandblast; Storage Bin & Tanks.....\$ 33.41	17.76
Brush & Roller.....\$ 30.54	17.76
Drywall.....\$ 31.74	17.76
Paper Hanger.....\$ 31.04	17.76
Stageman; Beltman; Steelman; Elevator Shaft; Bazooka, Boxes and Power Sander; Sprayman; Dipping...\$ 32.41	17.76
Steeplejack.....\$ 36.98	17.76

 PAIN0003-011 04/01/2019

BATES, BENTON, CALDWELL, CARROLL, COOPER, DAVIESS, GRUNDY,
 HARRISON, HENRY, LIVINGSTON, MERCER, MONITEAU, MORGAN, PETTIS &
 SALINE COUNTIES

Rates	Fringes
-------	---------

Painters:

Bridgeman; Lead Abatement; Sandblast; Storage Bin & Tanks.....\$ 26.73	17.76
Brush & Roller.....\$ 24.43	17.76
Drywall.....\$ 25.39	17.76
Paper Hanger.....\$ 24.83	17.76
Stageman; Beltman; Steelman; Elevator Shaft; Bazooka, Boxes and Power Sander; Sprayman; Dipping...\$ 26.35	17.76
Steeplejack.....\$ 29.58	17.76

 PAIN0203-001 04/01/2012

BARRY, BARTON, CEDAR, CHRISTIAN, DADE, DALLAS, DOUGLAS, GREENE,
 HICKORY, HOWELL, JASPER, LAWRENCE, MCDONALD, NEWTON, OZARK,
 POLK, ST. CLAIR, STONE, TANEY, VERNON, WEBSTER, and WRIGHT
 COUNTIES

Rates	Fringes
-------	---------

Painters:

Finisher.....\$ 20.18	11.33
Painter.....\$ 19.75	11.76

Sandblaster, High Man,
 Spray Man, Vinyl Hanger,
 Tool Operator.....\$ 21.18 11.33

Addendum No. 1 Item No. 1

 PAIN1265-003 07/01/2013

CAMDEN, CRAWFORD, DENT, LACLEDE, MARIES, MILLER, PHELPS,
 PULASKI AND TEXAS COUNTIES

	Rates	Fringes
--	-------	---------

Painters:

Brush and Roller.....	\$ 25.64	13.27
Floor Work.....	\$ 26.14	13.27
Lead Abatement.....	\$ 27.89	13.27
Spray.....	\$ 27.14	13.27
Structural Steel, Sandblasting and All Tank Work.....	\$ 26.89	13.27
Taping, Paperhanging.....	\$ 26.64	13.27

 PAIN1292-002 09/01/2021

BOLLINGER, BUTLER, CAPE GIRARDEAU, CARTER, DUNKLIN,
 MISSISSIPPI, NEW MADRID, OREGON, PEMISCOT, PERRY, REYNOLDS,
 RIPLEY, SCOTT, SHANNON, STODDARD and WAYNE COUNTIES

	Rates	Fringes
--	-------	---------

Painters:

Bridges, Stacks & Tanks.....	\$ 33.46	14.53
Brush & Roller.....	\$ 27.96	14.53
Spray & Abrasive Blasting; Waterblasting (over 5000 PSI).....	\$ 29.96	14.53

Height Rates (All Areas):

Over 60 ft. \$0.50 per hour.

Under 60 ft. \$0.25 per hour.

 PAIN1292-003 09/01/2021

IRON, MADISON, ST. FRANCOIS, STE. GENEVIEVE and WASHINGTON
 COUNTIES

	Rates	Fringes
--	-------	---------

Painters:

Bridges, Stacks & Tanks.....	\$ 33.46	14.53
Brush & Roller.....	\$ 27.96	14.53
Spray & Abrasive Blasting; Waterblasting (Over 5000 PSI).....	\$ 29.96	14.53

Height Rates (All Areas):

Over 60 ft. \$0.50 per hour

Under 60 ft. \$0.25 per hour.

 PAIN2012-001 04/01/2020

ANDREW, ATCHISON, BUCHANAN, DE KALB, GENTRY, HOLT, NODAWAY & WORTH COUNTIES

Addendum No. 1 Item No. 1

	Rates	Fringes
Painters:		
Brush & Roller.....	\$ 32.91	17.86
Sandblaster.....	\$ 34.41	17.86
Steeplejack.....	\$ 37.98	17.86

PLAS0518-006 03/01/2020

BARRY, BARTON, CEDAR, CHRISTIAN, DADE, DALLAS, DOUGLAS, GREENE, HICKORY, JASPER, LACLEDE, LAWRENCE, MCDONALD, NEWTON, OZARK, POLK, ST. CLAIR, STONE, TANEY, VERNON, WEBSTER, AND WRIGHT COUNTIES

	Rates	Fringes
CEMENT MASON/CONCRETE FINISHER...	\$ 24.44	12.11

PLAS0518-007 04/01/2021

CASS (Richards-Gebaur AFB only), CLAY, JACKSON, PLATTE AND RAY COUNTIES

	Rates	Fringes
Cement Masons:.....	\$ 33.67	18.30

PLAS0518-011 04/01/2019

ANDREW, ATCHISON, BATES, BUCHANNAN, CLINTON, DEKALB, GENTRY, HENRY, HOLT, JOHNSON, LAFAYETTE, NODAWAY & WORTH COUNTIES

	Rates	Fringes
CEMENT MASON/CONCRETE FINISHER...	\$ 32.00	20.13

PLAS0527-001 04/01/2021

	Rates	Fringes
CEMENT MASON		
FRANKLIN, LINCOLN AND WARREN COUNTIES.....	\$ 34.79	19.58
JEFFERSON, ST. CHARLES COUNTIES AND ST. LOUIS (City and County).....	\$ 35.96	19.56

PLAS0527-004 06/01/2021

CRAWFORD, DENT, IRON, MADISON, MARION, PHELPS, PIKE, PULASKI, RALLS, REYNOLDS, ST. FRANCOIS, STE. GENEVIEVE, SHANNON, TEXAS, WASHINGTON COUNTIES

	Rates	Fringes
CEMENT MASON.....	\$ 30.30	19.48

PLAS0908-001 05/01/2021

BOLLINGER, BUTLER, CAPE GIRARDEAU, CARTER, DUNKLIN, HOWELL,
MISSISSIPPI, NEW MADRID, OREGON, PEMISCOT, PERRY, RIPLEY,
SCOTT, STODDARD, AND WAYNE COUNTIES

Addendum No. 1

Item No. 1

	Rates	Fringes
--	-------	---------

CEMENT MASON.....	\$ 30.30	17.53
-------------------	----------	-------

PLAS0908-005 05/01/2021

BENTON, CALDWELL, CALLAWAY, CAMDEN, CARROLL, COLE, DAVIESS,
GASCONADE, GRUNDY, HARRISON, LIVINGSTON, MACON, MARIES, MERCER,
MILLER, MONTGOMERY, MORGAN, OSAGE, PETTIS & SALINE COUNTIES

	Rates	Fringes
--	-------	---------

CEMENT MASON.....	\$ 30.30	17.53
-------------------	----------	-------

PLUM0008-003 06/01/2021

CASS, CLAY, JACKSON, JOHNSON, AND PLATTE COUNTIES

	Rates	Fringes
--	-------	---------

Plumbers.....	\$ 49.43	23.29
---------------	----------	-------

PLUM0008-017 06/01/2021

BATES, BENTON, CARROLL, HENRY, LAFAYETTE, MORGAN, PETTIS, RAY,
ST. CLAIR, SALINE AND VERNON COUNTIES

	Rates	Fringes
--	-------	---------

Plumbers.....	\$ 49.43	23.29
---------------	----------	-------

PLUM0045-003 08/01/2021

ANDREW, ATCHISON, BUCHANAN, CALDWELL, CLINTON, DAVIESS, DEKALB,
GENTRY, HARRISON, HOLT, NODAWAY AND WORTH COUNTIES

	Rates	Fringes
--	-------	---------

Plumbers and Pipefitters.....	\$ 39.80	25.05
-------------------------------	----------	-------

PLUM0178-003 11/01/2021

BARRY, CEDAR, CHRISTIAN, DADE, DALLAS, DOUGLAS, GREENE,
HICKORY, LACLEDE, LAWRENCE, POLK, STONE, TANEY, WEBSTER AND
WRIGHT COUNTIES

	Rates	Fringes
--	-------	---------

Plumbers and Pipefitters.....	\$ 34.25	15.32
-------------------------------	----------	-------

PLUM0178-006 11/01/2021

BARTON, JASPER, MCDONALD AND NEWTON COUNTIES

	Rates	Fringes
--	-------	---------

Plumbers and Pipefitters

Projects \$750,000 & under....	\$ 31.28	15.32
Projects over \$750,000.....	\$ 34.25	15.32

Addendum No. 1 Item No. 1
--

PLUM0533-004 06/01/2021

BATES, BENTON, CARROLL, CASS, CLAY, HENRY, HICKORY, JACKSON,
JOHNSON, LAFAYETTE, MORGAN, PETTIS, PLATTE, RAY, SALINE, ST.
CLAIR AND VERNON COUNTIES

	Rates	Fringes
--	-------	---------

Pipefitters.....	\$ 49.98	22.95
------------------	----------	-------

PLUM0562-004 07/01/2021

ADAIR, AUDRAIN, BOLLINGER, BOONE, BUTLER, CALLAWAY, CAMDEN, CAPE
GIRARDEAU, CARTER, CHARITON, CLARK, COLE, COOPER, CRAWFORD,
DENT, DUNKLIN, FRANKLIN, GASCONADE, GRUNDY, HOWARD, HOWELL,
IRON, JEFFERSON, KNOX, LEWIS, LINCOLN, LINN, LIVINGSTON, MACON,
MADISON, MARIES, MARION, MERCER, MILLER, MISSISSIPPI, MONITEAU,
MONROE, MONTGOMERY, NEW MADRID, OREGON, OSAGE, PEMISCOTT,
PERRY, PHELPS, PIKE, PULASKI, PUTNAM, RALLS, RANDOLPH,
REYNOLDS, RIPLEY, ST. CHARLES, ST. FRANCOIS, STE. GENEVIEVE, ST.
LOUIS, SCHUYLER, SCOTLAND, SCOTT, SHANNON, SHELBY, STODDARD,
SULLIVAN, TEXAS, WARREN, WASHINGTON, AND WAYNE COUNTIES.

	Rates	Fringes
--	-------	---------

Plumbers and Pipefitters

Mechanical Contracts including all piping and temperature control work \$7.0 million & under.....	\$ 43.16	21.49
Mechanical Contracts including all piping and temperature control work over \$7.0 million.....	\$ 45.10	27.85

PLUM0562-016 07/01/2021

CAMDEN, COLE, CRAWFORD, FRANKLIN, JEFFERSON, MARIES, MILLER,
MONITEAU, OSAGE, PHELPS, PULASKI, ST. CHARLES, ST. LOUIS (City
and County), WARREN and WASHINGTON COUNTIES

	Rates	Fringes
--	-------	---------

Plumbers

Mechanical Contracts including all piping and temperature control work \$7.0 million & under.....	\$ 43.16	21.49
Mechanical Contracts including all piping and temperature control work over \$7.0 million.....	\$ 45.10	27.85

TEAM0013-001 05/01/2021

	Rates	Fringes
--	-------	---------

Addendum No. 1
Item No. 1

Truck drivers (ADAIR, BUTLER,
CLARK, DUNKIN, HOWELL, KNOX,
LEWIS, OREGON, PUTNAM,
RIPLEY, SCHUYLER AND SCOTLAND
COUNTIES)

GROUP 1.....	\$ 31.44	14.75
GROUP 2.....	\$ 31.60	14.75
GROUP 3.....	\$ 31.59	14.75
GROUP 4.....	\$ 31.71	14.75

Truck drivers (AUDRAIN,
BOLLINGER, BOONE, CALLAWAY,
CAPE GIRARDEAU, CARTER, COLE,
CRAWFORD, DENT, GASCONADE,
IRON, MACON, MADISON, MARIES,
MARION, MILLER, MISSISSIPPI,
MONROE, MONTGOMERY, NEW
MADRID, OSAGE, PEMISCOT,
PERRY, PHELPS, PIKE, PULASKI,
RALLS, REYNOLDS, ST.
FRANCOIS, STE. GENEVIEVE,
SCOTT, SHANNON, SHELBY,
STODDARD, TEXAS, WASHINGTON
AND WAYNE COUNTIES)

GROUP 1.....	\$ 32.17	14.75
GROUP 2.....	\$ 32.33	14.75
GROUP 3.....	\$ 32.32	14.75
GROUP 4.....	\$ 32.44	14.75

Truck drivers (FRANKLIN,
JEFFERSON and ST. CHARLES
COUNTIES)

GROUP 1.....	\$ 34.53	14.75
GROUP 2.....	\$ 34.64	14.75
GROUP 3.....	\$ 34.68	14.75
GROUP 4.....	\$ 34.75	14.75

Truck drivers (LINCOLN and
WARREN COUNTIES)

GROUP 1.....	\$ 33.18	14.75
GROUP 2.....	\$ 33.29	14.75
GROUP 3.....	\$ 34.33	14.75
GROUP 4.....	\$ 33.40	14.75

TRUCK DRIVERS CLASSIFICATIONS:

GROUP 1: Flat Bed Trucks, Single Axle; Station Wagons;
Pickup Trucks; Material Trucks, Single Axle; Tank Wagon,
Single Axle

GROUP 2: Agitator and Transit Mix Trucks

GROUP 3: Flat Bed Trucks, Tandem Axle; Articulated Dump
Trucks; Material Trucks, Tandem Axle; Tank Wagon, Tandem
Axle

GROUP 4: Semi and/or Pole Trailers; Winch, Fork & Steel
Trucks; Distributor Drivers and Operators; Tank Wagon,
Semi-Trailer; Insley Wagons, Dumpsters, Half-Tracks,
Speedace, Euclids and other similar equipment; A-Frame and
Derrick Trucks; Float or Low Boy

TEAM0056-001 05/01/2020

Rates

Fringes

Addendum No. 1

Item No. 1

Truck drivers (ANDREW,
BARTON, BATES, BENTON,
CALDWELL, CAMDEN, CARROLL,
CEDAR, CHARITON, CHRISTIAN,
CLINTON, COOPER, DADE,
DALLAS, DAVIESS, DEKALB,
DOUGLAS, GREENE, HENRY,
HICKORY, HOWARD, JASPER,
LACLEDE, LAWRENCE, LINN,
LIVINGSTON, MONITEAU, MORGAN,
NEWTON, PETTIS, POLK,
RANDOLPH, ST. CLAIR, SALINE,
VERNON, WEBSTER AND WRIGHT
COUNTIES)

GROUP 1.....	\$ 31.37	14.25
GROUP 2.....	\$ 31.53	14.25
GROUP 3.....	\$ 31.52	14.25
GROUP 4.....	\$ 31.64	14.25

Truck drivers: (ATCHISON,
BARRY, GENTRY, GRUNDY,
HARRISON, HOLT, MCDONALD,
MERCER, NODAWAY, OZARK,
STONE, SULLIVAN, TANEY AND
WORTH COUNTIES)

GROUP 1.....	\$ 30.64	14.25
GROUP 2.....	\$ 30.80	14.25
GROUP 3.....	\$ 30.79	14.25
GROUP 4.....	\$ 30.91	14.25

Truck drivers; (BUCHANAN,
JOHNSON AND LAFAYETTE
COUNTIES)

GROUP 1.....	\$ 32.58	14.25
GROUP 2.....	\$ 32.69	14.25
GROUP 3.....	\$ 32.73	14.25
GROUP 4.....	\$ 32.80	14.25

TRUCK DRIVER CLASSIFICATIONS

GROUP 1: Flat bed trucks single axle; station wagons; pickup trucks; material trucks single axle; tank wagons single axle.

GROUP 2: Agitator and transit mix-trucks.

GROUP 3: Flat bed trucks tandem axle; articulated dump trucks; material trucks tandem axle; tank wagons tandem axle.

GROUP 4: Semi and/or pole trailers; winch, fork & steel trucks; distributor drivers & operators; tank wagons semi-trailer; insley wagons, dumpsters, half-tracks, speedace, euclids & other similar equipment; A-frames and derrick trucks; float or low boy.

TEAM0245-001 03/26/2012

BARRY, BARTON, CAMDEN, CEDAR, CHRISTIAN, DALLAS, DENT, DOUGLAS,
GREENE, HICKORY, HOWELL, JASPER, LACLEDE, LAWRENCE, MCDONALD,
MILLER, NEWTON, OZARK, PHELPS, POLK, PULASKI, SHANNON, STONE,
TANEY, TEXAS, VERNON, WEBSTER AND WRIGHT COUNTIES

Rates

Fringes

Truck drivers:

Traffic Control Service	
Driver.....	\$ 20.45 0.00

Addendum No. 1
Item No. 1

PAID HOLIDAYS: New Year's Day, Decoration Day, July 4th, Labor Day, Thanksgiving Day, Christmas Day, employee's birthday and 2 personal days.

 TEAM0541-001 04/01/2021

CASS, CLAY, JACKSON, PLATTE AND RAY COUNTIES

	Rates	Fringes
Truck drivers:		
GROUP 1.....	\$ 33.71	16.75
GROUP 2.....	\$ 32.62	16.75
GROUP 3.....	\$ 33.14	16.75

TRUCK DRIVERS CLASSIFICATIONS

GROUP 1: Mechanics and Welders, Field; A-Frame Low Boy-Boom ruck Driver.

GROUP 2: Articulated Dump Truck; Insley Wagons: Dump Trucks, Excavating, 5 cu yds and over; Dumpsters; Half-Tracks: Speedace: Euclids & similar excavating equipment Material trucks, Tandem Two teams; Semi-Trailers; Winch trucks-Fork trucks; Distributor Drivers and Operators; Agitator and Transit Mix; Tank Wagon Drivers, Tandem or Semi; One Team; Station Wagons; Pickup Trucks; Material Trucks, Single Axle; Tank Wagon Drivers, Single Axle

GROUP 3: Oilers and Greasers - Field

 TEAM0682-002 05/01/2017

ST LOUIS CITY AND COUNTY

	Rates	Fringes
Truck drivers:		
GROUP 1.....	\$ 33.30	13.79+a+b+c+d
GROUP 2.....	\$ 33.50	13.79+a+b+c+d
GROUP 3.....	\$ 33.60	13.79+a+b+c+d

a. PENSION: 5/1/2012 - \$182.20 per week.

b. HAZMAT PREMIUM: If Hazmat certification on a job site is required by a state or federal agency or requested by project owner or by the employer, employees on that job site shall receive \$1.50 premium pay.

TRUCK DRIVERS CLASSIFICATIONS

GROUP 1 - Pick-up trucks; forklift, single axle; flatbed trucks; job site ambulance, and trucks or trailers of a water level capacity of 11.99 cu. yds. or less

GROUP 2 - Trucks or trailers of a water level capacity of 12.0 cu yds. up to 22.0 cu yds. including euclids, speedace and similar equipment of same capacity and compressors

Addendum No. 1
Item No. 1

GROUP 3 - Trucks or trailers of a water level capacity of 22.0 cu. yds & over including euclids, speedace & all floats, flatbed trailers, boom trucks, winch trucks, including small trailers, farm wagons tilt-top trailers, field offices, tool trailers, concrete pumps, concrete conveyors & gasoline tank trailers and truck mounted mobile concrete mixers

FOOTNOTE FOR TRUCK DRIVERS:

c. PAID HOLIDAYS: Christmas Day, Independence Day, Labor Day, Memorial Day, Veterans Day, New Years Day, Thanksgiving Day

d. PAID VACATION: 3 days paid vacation for 600 hours of service in any one contract year; 4 days paid vacation for 800 hours of service in any one contract year; 5 days paid vacation for 1,000 hours of service in any one contract year. When such an employee has completed 3 years of continuous employment with the same employer and then works the above required number of hours, he shall receive double the number of days of vacation specified above. When such an employee has completed 10 years of continuous employment with the same employer and then works the above required number of hours, he shall receive triple the number of days of vacation specified above. When such an employee has completed 15 years of continuous employment with the same employer and then works the above required number of hours, he shall receive 4 times the number of days of vacation specified above.

WELDERS - Receive rate prescribed for craft performing operation to which welding is incidental.

=====

Note: Executive Order (EO) 13706, Establishing Paid Sick Leave for Federal Contractors applies to all contracts subject to the Davis-Bacon Act for which the contract is awarded (and any solicitation was issued) on or after January 1, 2017. If this contract is covered by the EO, the contractor must provide employees with 1 hour of paid sick leave for every 30 hours they work, up to 56 hours of paid sick leave each year. Employees must be permitted to use paid sick leave for their own illness, injury or other health-related needs, including preventive care; to assist a family member (or person who is like family to the employee) who is ill, injured, or has other health-related needs, including preventive care; or for reasons resulting from, or to assist a family member (or person who is like family to the employee) who is a victim of, domestic violence, sexual assault, or stalking. Additional information on contractor requirements and worker protections under the EO is available at <https://www.dol.gov/agencies/whd/government-contracts>.

Unlisted classifications needed for work not included within the scope of the classifications listed may be added after award only as provided in the labor standards contract clauses (29CFR 5.5 (a) (1) (ii)).

Addendum No. 1
Item No. 1

The body of each wage determination lists the classification and wage rates that have been found to be prevailing for the cited type(s) of construction in the area covered by the wage determination. The classifications are listed in alphabetical order of ""identifiers"" that indicate whether the particular rate is a union rate (current union negotiated rate for local), a survey rate (weighted average rate) or a union average rate (weighted union average rate).

Union Rate Identifiers

A four letter classification abbreviation identifier enclosed in dotted lines beginning with characters other than ""SU"" or ""UAVG"" denotes that the union classification and rate were prevailing for that classification in the survey. Example: PLUM0198-005 07/01/2014. PLUM is an abbreviation identifier of the union which prevailed in the survey for this classification, which in this example would be Plumbers. 0198 indicates the local union number or district council number where applicable, i.e., Plumbers Local 0198. The next number, 005 in the example, is an internal number used in processing the wage determination. 07/01/2014 is the effective date of the most current negotiated rate, which in this example is July 1, 2014.

Union prevailing wage rates are updated to reflect all rate changes in the collective bargaining agreement (CBA) governing this classification and rate.

Survey Rate Identifiers

Classifications listed under the ""SU"" identifier indicate that no one rate prevailed for this classification in the survey and the published rate is derived by computing a weighted average rate based on all the rates reported in the survey for that classification. As this weighted average rate includes all rates reported in the survey, it may include both union and non-union rates. Example: SULA2012-007 5/13/2014. SU indicates the rates are survey rates based on a weighted average calculation of rates and are not majority rates. LA indicates the State of Louisiana. 2012 is the year of survey on which these classifications and rates are based. The next number, 007 in the example, is an internal number used in producing the wage determination. 5/13/2014 indicates the survey completion date for the classifications and rates under that identifier.

Survey wage rates are not updated and remain in effect until a new survey is conducted.

Union Average Rate Identifiers

Classification(s) listed under the UAVG identifier indicate that no single majority rate prevailed for those classifications; however, 100% of the data reported for the classifications was union data. EXAMPLE: UAVG-OH-0010 08/29/2014. UAVG indicates that the rate is a weighted union average rate. OH indicates the state. The next number, 0010 in the example, is an internal number used in producing the wage determination. 08/29/2014 indicates the survey completion date for the classifications and rates under that identifier.

A UAVG rate will be updated once a year, usually in January of each year, to reflect a weighted average of the current negotiated/CBA rate of the union locals from which the rate is

based.

Addendum No. 1 Item No. 1

WAGE DETERMINATION APPEALS PROCESS

1.) Has there been an initial decision in the matter? This can be:

- * an existing published wage determination
- * a survey underlying a wage determination
- * a Wage and Hour Division letter setting forth a position on a wage determination matter
- * a conformance (additional classification and rate) ruling

On survey related matters, initial contact, including requests for summaries of surveys, should be with the Wage and Hour National Office because National Office has responsibility for the Davis-Bacon survey program. If the response from this initial contact is not satisfactory, then the process described in 2.) and 3.) should be followed.

With regard to any other matter not yet ripe for the formal process described here, initial contact should be with the Branch of Construction Wage Determinations. Write to:

Branch of Construction Wage Determinations
Wage and Hour Division
U.S. Department of Labor
200 Constitution Avenue, N.W.
Washington, DC 20210

2.) If the answer to the question in 1.) is yes, then an interested party (those affected by the action) can request review and reconsideration from the Wage and Hour Administrator (See 29 CFR Part 1.8 and 29 CFR Part 7). Write to:

Wage and Hour Administrator
U.S. Department of Labor
200 Constitution Avenue, N.W.
Washington, DC 20210

The request should be accompanied by a full statement of the interested party's position and by any information (wage payment data, project description, area practice material, etc.) that the requestor considers relevant to the issue.

3.) If the decision of the Administrator is not favorable, an interested party may appeal directly to the Administrative Review Board (formerly the Wage Appeals Board). Write to:

Administrative Review Board
U.S. Department of Labor
200 Constitution Avenue, N.W.
Washington, DC 20210

4.) All decisions by the Administrative Review Board are final.

=====

END OF GENERAL DECISIO"

Addendum No. 1
Item No. 1

Addendum No. 1
Item No. 2

**West Port Plaza Drive - Marine Avenue Resurfacing
& West Port Plaza Drive Intersection Improvements
St. Louis County Project Nos. AR-1548 & AR-1673
Federal Project Nos. STP-9900(673) & CMAQ-9901(638)**

500.20.1 JOINT SEALANT FOR CONCRETE SIDEWALKS

The Contractor shall use NR-201, a one-part self-leveling, non-shrinking, aliphatic urethane sealant, or an approved equal for this work as directed by the Engineer. Installation requirements and product specifications may be found here:

<https://www.pecora.com/hybrid-construction-sealants/>

Revision  #1

Addendum No. 1 - Item No. 3



SPECIAL USE PERMIT

31832

03/11/2022

DEPARTMENT OF TRANSPORTATION

CLAYTON, MISSOURI 63105

PHONE: (314) 615-8517

FAX: (314) 615-7084

Permit Expires 120 days from the date of issuance

MLD Number:

PAC Number

143-E1

Map Location

Applicant Order No.

In accordance with Missouri Revised Statutes (RSMo), Chapter 229, "Provisions Related to All Roads", Section 229.300, The St. Louis County Department of Transportation hereby grants permission to:

Name: American Water Company

Address: 727 Craig Road

Creve Coeur, MO 63141

Phone: (314) 996-2396 Ext

Emer. Phone: (314) 705-7200 Ext

Emer. Contact: Mickie Redhage

Permit issued is subject to compliance with stipulations on Permit Review Form, Special Conditions List, Permit Application General Provisions and Conditions listed below.

Description: Within the right-of-way of West Port Plaza Drive, relocate 80 ft. of water main and relocate five (5) fire hydrants as approved by St. Louis County Design Division for West Port Plaza Road projects AR-1548 and AR-1673. Saw-cut as necessary to remove the existing asphalt pavement and trench 3 ft. X 1,320 ft. per attached drawing to replace an existing water main. Any damaged sidewalk shall be removed and replaced at the nearest joint per St. Louis County standard drawing C608.43. If roadway is damaged backfill with granular material, replace asphalt, concrete or a combination of both per St. Louis County standard drawings. Upon completion of work finish grade, sod disturbed earth areas and restore the right-of-way per St. Louis County standards.

All proposed work shall be coordinated with the Special Use Permit Inspector 48 hours prior to the start of any work. All traffic control shall be per St. Louis County and Manual on Uniform Traffic Control Devices (MUTCD) Standards. Three (3) lane(s) of traffic shall be maintained at all times during construction. Continuous pedestrian access shall be provided during the construction process. Prior to the start of construction, adequate pedestrian access around the site shall be provided and verified. No existing sidewalk shall be removed without providing adequate pedestrian facilities and routes during construction activities.

Pavement Excavations 1 X \$300.00 = \$300.00 / Footage 1,320 ft. x \$2.90 = \$3,828 / \$300.00 + \$3,828.00 = \$4,128.00

Location: WEST PORT PLAZA DRIVE, West of Fee Fee Road

- Applicant shall notify the Permit Inspection Section at 314-615-1150 a minimum of 48 hours prior to the start of any work.
- Applicant shall be responsible to request the location of all utilities, including traffic signal interconnect and facilities, prior to performing any work.
- Applicant shall coordinate with Missouri One Call prior to the start of any work, toll free at 1-800-DIG-RITE (344-7483). Note that Missouri One Call does not locate St. Louis County traffic signal facilities.
- Applicant shall email the Operations Division at signal_locates@stlouisco.com for traffic signal facility locates, a minimum of 72 hours in advance of any work.
- Applicant shall contact the St. Louis County Sign Shop at 314-615-0242 prior to the removal of any County signage.

PERMIT SHALL BE ON THE JOB SITE AT ALL TIMES

<input checked="" type="checkbox"/> Arterial	<input type="checkbox"/> County	<input type="checkbox"/> ARS/CRS
No. of Units:	1 @ \$300.00 =	\$300.00
Total Fees		\$4,128.00
<input type="checkbox"/> cash	<input type="checkbox"/> check	
<input checked="" type="checkbox"/> prepaid	<input type="checkbox"/> no charge	

Issued By

Department of Transportation

2228194

**FOR
REFERENCE
ONLY**



APPLICATION FOR SPECIAL USE PERMIT

To the DIRECTOR of the DEPARTMENT OF TRANSPORTATION, St. Louis
County, Missouri
41 South Central Avenue, 6th Floor, Clayton, Missouri 63105
Phone: (314) 615-8517 Fax: (314) 615-7084

- 1) Name of Applicant: Missouri American Water Company
- 2) Address of Applicant: 727 Craig Road
 City: St. Louis State: MO Zip: 63141 Phone No.: (314) 705 - 7200 Ext: _____
 Emergency Contact: Mickie Redhage Emergency No.: () _____ - _____
 Contractor (if applicable): _____
- 3) Type of Development (check boxes): ☐ New ☒ Existing ☐ Residential ☐ Commercial ☐ Industrial
- 4) Description of Work: Replace approximately 1400' of 12" water main and 5 fire hydrants along Westport Plaza Drive between I-270 and Fee Fee Road in conjunction with St Louis County projects AR-1548 and AR-1673. Restoration in paved area will consist of a minimum of 4" aggregate base course with 12" concrete to grade to match existing adjacent pavement.
- 5) Location of Work: Westport Plaza Drive between World Wide Way and Fee Fee Road and northeast corner of the intersection of Westport Plaza Drive and Westline Industrial Drive.
- 6) Master Drainlayer/Plumber Name: _____ License Number: D- _____ P- _____
- 7) Proposed Starting Date: 3/14/22 8) Days Required to Complete: 90
- 9) SL # _____ WL # _____ 10) Plumbing Permit Number: _____
- 11) PAC Number: _____ 12) MLD Number: _____
- 13) By typing or signing my name, I acknowledge that I have read and understand the above conditions and attached general provisions.

<u>Missouri American Water Company</u>	<u>Mickie K. Redhage</u>	<u>3-9-22</u>
Company Name	Applicant's Signature	Date

----- THE FOLLOWING IS FOR OFFICE USE ONLY -----

☒ Arterial Road System ☐ County Road System

Fees Collected: 4128 Number of Units: 1 Grading: 10 Date: 3/11/22 By: [Signature]

Special Use Permit Number: 217559 Map Location: 143-E1

10/29/2018 1 @ 300 = 300 Page 1 of 6 19063

1,320 @ 2.90 = 3,828

4128

FOR
REFERENCE
ONLY

Addendum No. 1 - Item No. 3

☒ ARTERIAL

☐ COUNTY

MAP LOCATION

143-E1

ST. LOUIS COUNTY DEPARTMENT OF TRANSPORTATION PERMIT REVIEW FORM

SPECIAL USE PERMIT

Permit Number: 21802
PAC Number: _____
MLD Number: _____

Date: March 10, 2022

Applicant: Missouri American Water Company
WEST PORT PLAZA DRIVE, West of Fee Fee Road

R17-02D1.21-P-0028

As a result of the review of the application and plans for issuance of a Special Use Permit to:

Within the right-of-way of West Port Plaza Drive, relocate 80 ft. of water main and relocate five (5) fire hydrants as approved by St. Louis County Design Division for West Port Plaza Road projects AR-1548 and AR-1673. Saw-cut as necessary to remove the existing asphalt pavement and trench 3 ft. X 1,320 ft. per attached drawing to replace an existing water main. Any damaged sidewalk shall be removed and replaced at the nearest joint per St. Louis County standard drawing C608.43. If roadway is damaged backfill with granular material, replace asphalt, concrete or a combination of both per St. Louis County standard drawings. Upon completion of work finish grade, sod disturbed earth areas and restore the right-of-way per St. Louis County standards.

All proposed work shall be coordinated with the Special Use Permit Inspector 48 hours prior to the start of any work. All traffic control shall be per St. Louis County and Manual on Uniform Traffic Control Devices (MUTCD) Standards. Three (3) lane(s) of traffic shall be maintained at all times during construction.

Continuous pedestrian access shall be provided during the construction process. Prior to the start of construction, adequate pedestrian access around the site shall be provided and verified. No existing sidewalk shall be removed without providing adequate pedestrian facilities and routes during construction activities.

Pavement Excavations 1 X \$300.00 = \$300.00 / Footage 1,320 ft. x \$2.90 = \$3,828 / \$300.00 + \$3,828.00 = \$4,128.00

Permit is good for 120 days.

The following items (x) shall be adhered to:

1. ☒ Roads and Streets to be kept open to traffic.
2. ☐ Road and Street to be bored.
- 3A. ☐ Open trenches crossings of concrete pavement require replacement of curb and slab from existing joints with:
- 3B. ☒ New concrete pavement to be constructed of:
 - a. 12" Thick Portland Cement Concrete Pavement
 - b. 4" Thick - Type 5 Aggregate Base
4. ☐ Construction of driveway entrances will require removal of roadway curb to a saw cut edge located 1 ft. from gutter line (face of curb); Removal of existing curb and gutter or saw cut 1 ft. from existing edge of pavement as shown on approved plans.
- 5A. ☐ Open trench crossings of Bituminous Pavement will be replaced with:
- 5B. ☐ New Bituminous Pavement to be constructed of
 - a. ☐ 2" Thick - Type "C" Bituminous Pavement Wearing Surface
 - b. ☐ 7.5 " Thick - Type "X" Bituminous Pavement Base
 - c. ☐ 2" Thick - Type SP125 Superpave Wearing Surface
 - d. ☐ 10" Thick - Type SP190 Superpave Base Course
 - e. ☐ 4" Thick- Type 5 Aggregate Base
6. ☐ Open trench crossing of sidewalk, road and driveway pavements will require Granular Backfill.
7. ☐ Prior to any land disturbance activity for work beyond the right-of-way, a Land Disturbance Permit must be obtained from the Department of Public Works.
8. ☐ A separate drainlayer permit for internal storm sewers is required from St. Louis County Department of Public Works, Plumbing Inspections at 314-615-7093.
9. ☒ Remarks: Permit issued subject to compliance with the attached "Listing of Permit Conditions"

REVIEWED BY: James D. Hayes
James D. Hayes

- The Department's Permit Inspection Section shall be notified 48 hours prior to commencement of work at.
☒ 314-615-1150 - Construction Inspection
 - Note: Completed improvements within the County Road Right-of-Way shall not be open to traffic without permission from the Director of St. Louis County Department of Highways & Traffic.
 - Notification must be given to this Department whenever steel plates are utilized. Steel plates shall be installed per Section 626 of the St. Louis County Manual of Standard Specifications for Highway Construction.
- cc: ☒ Division of Construction, Todd Ware w/1 set of plans
☒ Division of Project Development, Pam Thebeau w/1 set of plans (CIP No. AR-1548/1673)
☐ Division of Project Development, Pam Thebeau w/1 set of plans (Traffic Signals)
☒ Division of Operations, Scott Halter w/1 set of plans (Traffic Signals)

**FOR
REFERENCE
ONLY**
Rev 12/28/2020

Addendum No. 1 - Item No. 3

- ☐ Division of Operations, Marty Koeller w/1 set of plans (Traffic Signals)
- ☐ Division of Construction, Todd Ware w/2 sets of plans and 2 escrows
- ☐ Signal Engineer
- ☒ Applicant: Missouri American Water Company, 727 Craig Road, Creve Coeur, MO 63141 Mickie Redhage 314-705-7200
- ☐ Consulting Engineer:
- ☐ PAC, w/2 sets of plans for PW Grading
- ☐ PAC, w/2 sets of plans for PW Plumbing Inspections
- ☐ MoDOT
- ☒ Municipality: City of Maryland Heights, 11911 Dorsett Road, Maryland Heights, MO 63043
- ☐ Department of Planning, Jacob Trimble w/1 set of plans (Subdivisions only)
- ☐ Water/Sewer Lateral Program
- ☒ Office Copy w/ 1 set of plans

FOR
REFERENCE
ONLY

Rev 12/28/2020

Addendum No. 1 - Item No. 3

Permit Number: 1802
PAC Number: _____
MLD Number: _____

Date: March 10, 2022

SPECIAL CONDITIONS

All items indicated by (x) in the following shall be applicable to the work authorized under this permit.

1. ☒ **Pre-construction Conference.** Prior to commencement of work on the Project, Applicant shall request a pre-construction meeting by calling (314) 615-1150 (Construction Inspection).
2. ☒ **Approved Plan.** Applicant shall comply with the Project approved plan dated March 10, 2022, 2021. Applicant may request that such plan be modified, but no such modification shall be effective without approval by the Department of Transportation.
3. ☐ **Temporary Construction Entrances.** Applicant shall locate temporary construction entrances as specified in the permit documents.
4. ☐ **Temporary Construction Entrance Surfaces.** Applicant shall install temporary construction entrance surfaces consisting of eight-inch-thick Type 5 aggregate.
5. ☐ **Encasement.** Applicant Shall comply with encasement requirements of MSD or other applicable utilities.
6. ☒ **Lane Restrictions.** Applicant shall keep all lane(s) open during working hours with flagman/flagmen directing traffic. Applicant shall limit traffic movement restrictions to between the hours of **9:00 am** and **3:30 pm**. Applicant shall protect restricted lanes with barricades, cones and similar traffic control devices as per the approved permit documents. Applicant shall return all lanes to normal traffic flows after working hours.
7. ☐ **Plumbing License.** Applicant shall require that all appropriate plumbing related work be performed by a plumber or plumbing company, licensed and bonded by the County.
8. ☐ **MoDOT, MSD.** Applicant shall notify MoDOT and/or MSD upon receipt of this Special Use Permit.
9. ☐ **Acceptance and Release.** Within ten days of completion of the Project, Applicant shall submit a written request for County acceptance and for release of any applicable escrow or letter of credit.
10. ☐ **Land Disturbance.** Applicant shall perform all land disturbance in conformance with County land disturbance regulations, including siltation devices requirements. Applicant shall submit a Storm Water Pollution Prevention Plan (SWPPP) if applicable to the Project.
11. ☐ **Restoration of Asphalt Driving Surface.** In addition to the requirements of Standard Drawing C613.00, the contractor shall mill and overlay the full width of the impacted lane(s) or shoulders(s) for trench excavations that exceed 50 ft. longitudinally. When 5 ft. or less of pavement remains between the excavation and the nearest joint or pavement edge, the contractor shall mill and overlay to the joint or pavement edge.
12. ☐ **Surety Bonds.** Applicant shall provide appropriate surety bonds as required by the Department of Transportation.
13. ☒ **Certificate of Insurance.** Any entity that performs work on St. Louis County maintained property shall provide the County with a Certificate of Insurance evidencing general liability coverage (bodily injury and property damage) in the amounts specified as the limits of liability set by the State for public entities. Such certificate shall include "St. Louis County" as an additional insured and shall be provided prior to the issuance of any permit. Certificate shall provide for a 30 day policy cancellation notice to St. Louis County. Upon request, the County will provide the specific amounts for both per person and per occurrence limits.
14. ☒ **Traffic Signal Facilities.** Applicant shall use extreme caution in areas where traffic signal facilities are existing. It is the responsibility of the contractor/developer to contact the St. Louis County Department of Transportation at (314) 615-0215 a minimum of 48 hours in advance of construction work for locating and spotting existing traffic signal conduit. In the event the contractor damages any traffic signal facilities, repairs shall be made at the contractor's expense by an electrical contractor as directed by St. Louis County.
15. ☐ **Temporary Pedestrian Access.** Continuous pedestrian access shall be provided during the construction process. Prior to the start of construction, adequate pedestrian access around the site shall be provided and verified. No existing sidewalk shall be removed without providing adequate pedestrian facilities and routes during construction activities.

FOR
REFERENCE
ONLY

Addendum No. 1 - Item No. 3

16. ☐ **Road Closures.** All road closure applications shall require the permit applicant to provide Variable Message Signs at or near the closure site for one week prior to the closure as directed by the Department of Transportation. Sign wording and placement shall be coordinated with the Special Use Permit Inspector at _____.
17. ☒ **Property Access.** Access to all properties shall be maintained at all times during the construction process.
18. ☐ **Additional Special Conditions.** The following special conditions shall apply to this permit.

ST. LOUIS COUNTY

SPECIAL USE PERMIT GENERAL PROVISIONS

DEFINITIONS

For purposes of this Application, the terms are defined as follows:

- 1) **Applicant**. The person (individual or artificial entity) that controls the property or the project authorized by this SUP. If Applicant uses a Contractor, the term "Applicant" includes the term "Contractor".
- 2) **Contractor**. The person (individual or artificial entity) that performs the work authorized by this SUP.
- 3) **County**. St. Louis County, Missouri.
- 4) **Department**. The St. Louis County Department of Transportation.
- 5) **Director**. The Director of the Department or his / her designee.
- 6) **Project**. The work performed by Applicant pursuant to this SUP.
- 7) **SUP**. This Special Use Permit.

TERMS AND CONDITIONS

By submitting this application, the Applicant agrees to comply with all obligations, requirements, terms and conditions contained in the General and Special Conditions contained in this application. Except in those instances and to the extent that Applicant makes a good faith determination that an emergency exists, Applicant shall perform no work on a Project prior to issuance of an SUP. If Applicant fails to comply with any General or Special Condition, County may suspend or revoke this SUP. If Applicant wishes to request an exemption from, or a modification of, any General or Special Condition, Applicant must follow the procedures specified below in General Condition No. 4, titled "Variance Procedure".

GENERAL CONDITIONS

- 1) **Notification**. Applicant shall notify County at least 48 hours in advance that work will start on the Project. In non-emergency situations, Applicant shall provide such notice by contacting the Permit Inspection Section of the Department at (314) 615-1166 or by email to the following address: Highways-Permit-Inspection@stlouisco.com. In emergency situations, Applicant shall provide such notice by calling the applicable number listed in County's Special Use Permit Booklet, Requirements and Conditions. Applicant shall not commence any work prior to such notification, except in emergency situations.
- 2) **Utilities Locates**. Applicant shall be responsible to request the location of all utilities, including traffic signal interconnect and facilities, prior to performing any work. Applicant shall call the Department at (314) 615-0215 for traffic signal facility locates, a minimum of 72 hours in advance of any work, except in the case of emergencies.
- 3) **Performance**. Applicant shall perform all work in a workmanlike manner, without unreasonable delay, and in full compliance with this SUP.

- 4) **Variance Procedure.** If Applicant has a good faith belief that a General or Special Condition, in whole or in part, should not apply to the Project or to the Applicant, Applicant shall file contemporaneously with this SUP application a "Variance Application" (see Exhibit "A", attached hereto) for an exemption or modification of such condition. The Variance Application shall contain a full explanation of the reasons in support of the request and all other relevant information requested on the Variance Application. The Director will respond to the Applicant by granting or denying the request in whole or in part, without undue delay.
- 5) **Indemnification.** Applicant shall defend, indemnify and hold harmless the County, its officers and employees, whether based on a claim for real or personal property, or to a person, for any and all damages arising from the negligence or intentional tort of said Applicant or its subcontractors in constructing, extending, restoring or maintaining its facilities within, upon or across a County owned easement or right-of-way. Additionally, for a period of six months from the completion of such work or use, Applicant will save the County harmless from any cost or expense occasioned or required in the refilling, repairing, or restoring of said easement or right-of-way, for such period, due to or occasioned by such use, excavation or encroachment.
- 6) **Insurance Coverage.** The applicant shall provide the County with a Certificate of Insurance, evidencing insurance coverages to current County requirements for any entity that performs work in County right-of-way associated with this application. Such certificates shall name "St. Louis County" as additional insured and shall be provided prior to the issuance of any permit. Upon request, County will provide specific amounts for coverages. Applicant will require all of its contractors and subcontractors to add St. Louis County as an additional insured; and provide copies of contractors' and subcontractors' Certificates of Insurance to County, prior to the commencement of work under this Permit by the contractor and/or subcontractor.
- 7) **Signs, Barricades, Flagmen.** While work is being performed in County right-of-way, Applicant shall comply with the most recent version of the Manual of Uniform Traffic Control Devices (MUTCD).
- 8) **Vertical Clearance.** Applicant shall maintain a vertical clearance for overhead installations of not less than 16 feet, 6 inches from the road surface.
- 9) **Cover for Underground Facilities.** At the time of installation, Applicant shall provide the following minimum cover for underground facilities, unless approved through the Variance Procedure: 42 inches for waterlines, 24 inches for parallel telephone cables, 18 inches for gas service lines, 24 inches for gas mains, and 30 inches for all other underground installations.
- 10) **Covers or Guards.** Applicant shall provide covers or guards as approved by Director for cable, wire, small diameter pipe and other objects that extend above the surface.
- 11) **Mud, Debris.** Applicant shall keep pavements clear of mud and debris, and keep ditches, culverts and other areas that convey surface water, open and free from mud and debris.
- 12) **Pavement Crossings/Openings.** The Project shall not include open cut of any paved portion of the right-of-way unless such open cuts are limited to time periods designated in paragraph 13, "Lane Interruption/Traffic Stream". The Director may prohibit open cuts or impose additional limits if, after considering all relevant factors, the Director makes a good faith determination that such open cuts will result in an unreasonable disruption of the traffic stream.
- 13) **Restoration of Asphalt Driving Surface.** In addition to the requirements of Standard Drawing C613.00, the contractor shall mill and overlay the full width of the impacted lane(s) or shoulder(s) for trench excavations that exceed 50 feet longitudinally. When 5 feet or less of pavement remains between the excavation and the nearest joint or pavement edge, the contractor shall mill and overlay to the joint or pavement edge.
- 14) **Disturbed Paved Right-of-Way.** At the completion of the Project, Applicant shall restore the paved right-of-way and any improvements thereon, to as good condition as before the Project, and keep and maintain such paved right-of-way in such condition for a period of six months. Applicant shall replace

the subgrade and surface with like kind materials. Applicant shall fill all voids and pavement openings with granular backfill, which shall be compacted to comply with Standard Specification for Road and Bridge Construction, Section 726.6.3. Applicant shall make final pavement repairs within thirty days of completed temporary pavement work. If within six months of the completion of the Project, the paved right-of-way fails to remain in as good condition as before the Project, applicant shall repair such right-of-way to effect such compliance.

- 15) **Lane Interruption / Traffic Stream.** In non-emergency situations, the Project shall not interrupt the traffic stream between the hours of 6:00 am to 9:00 am and 3:30 pm to 6:30 pm.
- 16) **Disturbed Unpaved Right-of-Way.** All disturbed unpaved areas of the right-of-way shall be re-graded, and vegetation restored to as good a condition as before the Project.
- 17) **Manholes.** Applicant shall conform utility boxes, valve boxes, manhole frame covers or any utility appurtenances to the transverse and longitudinal pavement slope, and make the top comply with the finished grade.
- 18) **Trees, Shrubs and Turf.** Applicant shall make all reasonable efforts not to cut, spray or damage trees, shrubs or turf in County right-of-way. If any such trees, shrubs or turf are damaged, Applicant shall restore or replace such items as is reasonable.
- 19) **Disturbed Driveways and Sidewalks.** Applicant shall repair or replace all subgrade, sidewalks, driveway approaches and associated drainage facilities that Applicant damages or removes with like kind materials. When Applicant disturbs 50% or more of a slab of a concrete driveway or sidewalk, Applicant shall replace such slab with a full slab. Applicant shall replace all paved improvements at the same depth as before the Project.
- 20) **Private Facilities.** If Applicant damages or removes privately owned facilities lawfully located within County right-of-way, Applicant shall immediately notify the owner, and repair or replace such facilities as soon as practical. Applicant will address any dispute with owners of private facilities as a civil matter arising in the course of business.
- 21) **Storage.** Applicant shall not store construction material or equipment on County right-of-way, if Applicant owns or controls property used for such storage within 500 feet of the Project. In any case, Applicant shall not store construction material or equipment if such storage impedes traffic or property access, or creates a sight distance hazard. Within thirty days after completion of the Project, Applicant shall restore all storage areas to as good a condition as before the Project.
- 22) **Costs.** Applicant shall bear all non-reimbursable costs of construction, maintenance, removal, repair and related costs associated with this SUP.
- 23) **Pedestrian Right-of-Way Obstruction.** Applicant work that closes, or impedes pedestrian traffic shall comply with the Manual of Uniform Traffic Control Devices (MUTCD).
- 24) **Trenches.** Applicant shall keep all trenches in right-of-way covered and protected during non-working hours. At the completion of the Project, all trenches within three feet of or under existing or future (programmed) pavement shall be backfilled with granular material.
- 25) **Landscaping and Monuments.** Applicant shall not install landscaping or entrance monuments unless replacing existing landscaping or monuments as specified by this SUP.
- 26) **Fill Material.** Applicant shall use fill material that consists of uncontaminated inert materials (soil, rock, concrete, asphaltic concrete, sand and similar materials). Applicant shall not allow materials such as wood, metals, plastics, textiles and hydrocarbons as fill material. Applicant shall report to appropriate federal, state or local officials the existence of any material subject to applicable reporting requirements.

Exhibit "A"

Application for Variance

SUP No. _____

By filing this Application with County, Applicant represents that it has a good faith belief that the General Conditions (GC) and/or Special Conditions (SC) specified below should not apply, in whole or in part, to Applicant's Project. Furthermore, Applicant affirms that the information contained herein, and the reasons stated herein, are true to the best of Applicant's knowledge and belief.

GC No. _____

Reasons why GC should not apply:

1)

2)

3)

SC No. _____

Reasons why SC should not apply:

1)

2)

3)

(See attached pages for requests for variances for additional GCs and SCs.)

Attached are all plans and documents that support Applicant's request for variance, including plans and documents relating to duration and extent of any adverse effect on traffic stream.

Approved:

(Applicant)

(St. Louis County Department of Transportation)

Addendum No. 1 - Item No. 3



CERTIFICATE OF LIABILITY INSURANCE

DATE (MM/DD/YYYY)
12/29/2021

THIS CERTIFICATE IS ISSUED AS A MATTER OF INFORMATION ONLY AND CONFERS NO RIGHTS UPON THE CERTIFICATE HOLDER. THIS CERTIFICATE DOES NOT AFFIRMATIVELY OR NEGATIVELY AMEND, EXTEND OR ALTER THE COVERAGE AFFORDED BY THE POLICIES BELOW. THIS CERTIFICATE OF INSURANCE DOES NOT CONSTITUTE A CONTRACT BETWEEN THE ISSUING INSURER(S), AUTHORIZED REPRESENTATIVE OR PRODUCER, AND THE CERTIFICATE HOLDER.

IMPORTANT: If the certificate holder is an **ADDITIONAL INSURED**, the policy(ies) must have **ADDITIONAL INSURED** provisions or be endorsed. If **SUBROGATION** IS **WAIVED**, subject to the terms and conditions of the policy, certain policies may require an endorsement. A statement on this certificate does not confer rights to the certificate holder in lieu of such endorsement(s).

PRODUCER Marsh USA Inc. 1166 Avenue of the Americas New York, NY 10036 Attn: NewYork.Certs@marsh.com Fax: 212-948-0500	CONTACT NAME: _____ PHONE (A/C, No, Ext): _____ E-MAIL ADDRESS: _____ FAX (A/C, No): _____														
INSURED American Water Works Company, Inc. 1 Water St Camden, NJ 08102	<table border="1"> <thead> <tr> <th data-bbox="631 357 1094 378">INSURER(S) AFFORDING COVERAGE</th> <th data-bbox="1094 357 1208 378">NAIC #</th> </tr> </thead> <tbody> <tr> <td data-bbox="631 378 1094 399">INSURER A: Travelers Property Casualty Company Of America</td> <td data-bbox="1094 378 1208 399">25674</td> </tr> <tr> <td data-bbox="631 399 1094 420">INSURER B: AEGIS Insurance Services, Inc.</td> <td data-bbox="1094 399 1208 420"></td> </tr> <tr> <td data-bbox="631 420 1094 441">INSURER C: Travelers Indemnity Company of Connecticut</td> <td data-bbox="1094 420 1208 441">25682</td> </tr> <tr> <td data-bbox="631 441 1094 462">INSURER D:</td> <td data-bbox="1094 441 1208 462"></td> </tr> <tr> <td data-bbox="631 462 1094 483">INSURER E:</td> <td data-bbox="1094 462 1208 483"></td> </tr> <tr> <td data-bbox="631 483 1094 504">INSURER F:</td> <td data-bbox="1094 483 1208 504"></td> </tr> </tbody> </table>	INSURER(S) AFFORDING COVERAGE	NAIC #	INSURER A: Travelers Property Casualty Company Of America	25674	INSURER B: AEGIS Insurance Services, Inc.		INSURER C: Travelers Indemnity Company of Connecticut	25682	INSURER D:		INSURER E:		INSURER F:	
INSURER(S) AFFORDING COVERAGE	NAIC #														
INSURER A: Travelers Property Casualty Company Of America	25674														
INSURER B: AEGIS Insurance Services, Inc.															
INSURER C: Travelers Indemnity Company of Connecticut	25682														
INSURER D:															
INSURER E:															
INSURER F:															

COVERAGES

CERTIFICATE NUMBER:

NYC-010778493-11

REVISION NUMBER: 11

THIS IS TO CERTIFY THAT THE POLICIES OF INSURANCE LISTED BELOW HAVE BEEN ISSUED TO THE INSURED NAMED ABOVE FOR THE POLICY PERIOD INDICATED. NOTWITHSTANDING ANY REQUIREMENT, TERM OR CONDITION OF ANY CONTRACT OR OTHER DOCUMENT WITH RESPECT TO WHICH THIS CERTIFICATE MAY BE ISSUED OR MAY PERTAIN, THE INSURANCE AFFORDED BY THE POLICIES DESCRIBED HEREIN IS SUBJECT TO ALL THE TERMS, EXCLUSIONS AND CONDITIONS OF SUCH POLICIES. LIMITS SHOWN MAY HAVE BEEN REDUCED BY PAID CLAIMS.

INSR LTR	TYPE OF INSURANCE	ADDL SUBR INSD WVD	POLICY NUMBER	POLICY EFF (MM/DD/YYYY)	POLICY EXP (MM/DD/YYYY)	LIMITS
C	COMMERCIAL GENERAL LIABILITY	X X	HC2J-GLSA-2G401576-22	01/01/2022	01/01/2023	EACH OCCURRENCE \$ 2,000,000 DAMAGE TO RENTED PREMISES (Ea occurrence) \$ 2,000,000 MED EXP (Any one person) \$ 5,000 PERSONAL & ADV INJURY \$ 2,000,000 GENERAL AGGREGATE \$ 10,000,000 PRODUCTS - COMP/OP AGG \$ Included Above GENTL AGGREGATE LIMIT APPLIES PER: X POLICY : PRO. JECT : LOC : OTHER:
C	AUTOMOBILE LIABILITY	X X	HC2J-CAP-2G401564-22	01/01/2022	01/01/2023	COMBINED SINGLE LIMIT (Ea accident) \$ 1,000,000 BODILY INJURY (Per person) \$ BODILY INJURY (Per accident) \$ PROPERTY DAMAGE (Per accident) \$ \$
B	UMBRELLA LIAB		XL5761204P	01/01/2022	01/01/2023	EACH OCCURRENCE \$ 24,000,000 AGGREGATE \$ 24,000,000 \$
A	WORKERS COMPENSATION AND EMPLOYERS' LIABILITY		UB-01494807-22-NC-T	01/01/2022	01/01/2023	ANY PROPRIETOR/PARTNER/EXECUTIVE/OFFICER/MEMBER EXCLUDED? (Mandatory in NH) Y/N N/A If yes, describe under DESCRIPTION OF OPERATIONS below X PER STATUTE OTH-ER E.L. EACH ACCIDENT \$ 1,000,000 E.L. DISEASE - EA EMPLOYEE \$ 1,000,000 E.L. DISEASE - POLICY LIMIT \$ 1,000,000

DESCRIPTION OF OPERATIONS / LOCATIONS / VEHICLES (ACORD 101, Additional Remarks Schedule, may be attached if more space is required)

Certificate Holder is included as additional insured (except workers compensation) where required by written contract and allowed by law. This insurance is primary and non-contributory over any existing insurance and limited to liability arising out of the operations of the named insured and where required by written contract. Waiver of subrogation is applicable where required by written contract and subject to policy terms and conditions.

CERTIFICATE HOLDER

CANCELLATION

St Louis County
41 South Central Ave
St Louis, MO 63105

SHOULD ANY OF THE ABOVE DESCRIBED POLICIES BE CANCELLED BEFORE THE EXPIRATION DATE THEREOF, NOTICE WILL BE DELIVERED IN ACCORDANCE WITH THE POLICY PROVISIONS.

AUTHORIZED REPRESENTATIVE

Marsh USA Inc.

© 1988-2016 ACORD CORPORATION. All rights reserved.

ACORD 25 (2016/03)

The ACORD name and logo are registered marks of ACORD

FOR
REFERENCE
ONLY

THIS ENDORSEMENT CHANGES THE POLICY. PLEASE READ IT CAREFULLY.**BUSINESS AUTO EXTENSION ENDORSEMENT**

This endorsement modifies insurance provided under the following:

BUSINESS AUTO COVERAGE FORM

GENERAL DESCRIPTION OF COVERAGE – This endorsement broadens coverage. However, coverage for any injury, damage or medical expenses described in any of the provisions of this endorsement may be excluded or limited by another endorsement to the Coverage Part, and these coverage broadening provisions do not apply to the extent that coverage is excluded or limited by such an endorsement. The following listing is a general coverage description only. Limitations and exclusions may apply to these coverages. Read all the provisions of this endorsement and the rest of your policy carefully to determine rights, duties, and what is and is not covered.

- | | |
|--|--|
| <p>A. BROAD FORM NAMED INSURED</p> <p>B. BLANKET ADDITIONAL INSURED</p> <p>C. EMPLOYEE HIRED AUTO</p> <p>D. EMPLOYEES AS INSURED</p> <p>E. SUPPLEMENTARY PAYMENTS – INCREASED LIMITS</p> <p>F. HIRED AUTO – LIMITED WORLDWIDE COVERAGE – INDEMNITY BASIS</p> <p>G. WAIVER OF DEDUCTIBLE – GLASS</p> | <p>H. HIRED AUTO PHYSICAL DAMAGE – LOSS OF USE – INCREASED LIMIT</p> <p>I. PHYSICAL DAMAGE – TRANSPORTATION EXPENSES – INCREASED LIMIT</p> <p>J. PERSONAL PROPERTY</p> <p>K. AIRBAGS</p> <p>L. NOTICE AND KNOWLEDGE OF ACCIDENT OR LOSS</p> <p>M. BLANKET WAIVER OF SUBROGATION</p> <p>N. UNINTENTIONAL ERRORS OR OMISSIONS</p> |
|--|--|

PROVISIONS**A. BROAD FORM NAMED INSURED**

The following is added to Paragraph A.1., **Who Is An Insured**, of **SECTION II – COVERED AUTOS LIABILITY COVERAGE**:

Any organization you newly acquire or form during the policy period over which you maintain 50% or more ownership interest and that is not separately insured for Business Auto Coverage. Coverage under this provision is afforded only until the 180th day after you acquire or form the organization or the end of the policy period, whichever is earlier.

B. BLANKET ADDITIONAL INSURED

The following is added to Paragraph c. in A.1., **Who Is An Insured**, of **SECTION II – COVERED AUTOS LIABILITY COVERAGE**:

Any person or organization who is required under a written contract or agreement between you and that person or organization, that is signed and executed by you before the "bodily injury" or "property damage" occurs and that is in effect during the policy period, to be named as an additional insured is an "insured" for Covered Autos Liability Coverage, but only for damages to which

this insurance applies and only to the extent that person or organization qualifies as an "insured" under the **Who Is An Insured** provision contained in Section II.

C. EMPLOYEE HIRED AUTO

1. The following is added to Paragraph A.1., **Who Is An Insured**, of **SECTION II – COVERED AUTOS LIABILITY COVERAGE**:

An "employee" of yours is an "insured" while operating an "auto" hired or rented under a contract or agreement in an "employee's" name, with your permission, while performing duties related to the conduct of your business.

2. The following replaces Paragraph b. in B.5., **Other Insurance**, of **SECTION IV – BUSINESS AUTO CONDITIONS**:

- b. For Hired Auto Physical Damage Coverage, the following are deemed to be covered "autos" you own:

- (1) Any covered "auto" you lease, hire, rent or borrow; and
- (2) Any covered "auto" hired or rented by your "employee" under a contract in an "employee's" name, with your

**FOR
REFERENCE
ONLY**

COMMERCIAL AUTO

permission, while performing duties related to the conduct of your business.

However, any "auto" that is leased, hired, rented or borrowed with a driver is not a covered "auto".

D. EMPLOYEES AS INSURED

The following is added to Paragraph A.1., **Who Is An Insured**, of **SECTION II – COVERED AUTOS LIABILITY COVERAGE**:

Any "employee" of yours is an "insured" while using a covered "auto" you don't own, hire or borrow in your business or your personal affairs.

E. SUPPLEMENTARY PAYMENTS – INCREASED LIMITS

1. The following replaces Paragraph A.2.a.(2), of **SECTION II – COVERED AUTOS LIABILITY COVERAGE**:

(2) Up to \$3,000 for cost of bail bonds (including bonds for related traffic law violations) required because of an "accident" we cover. We do not have to furnish these bonds.

2. The following replaces Paragraph A.2.a.(4), of **SECTION II – COVERED AUTOS LIABILITY COVERAGE**:

(4) All reasonable expenses incurred by the "insured" at our request, including actual loss of earnings up to \$500 a day because of time off from work.

F. HIRED AUTO – LIMITED WORLDWIDE COVERAGE – INDEMNITY BASIS

The following replaces Subparagraph (5) in Paragraph B.7., **Policy Period, Coverage Territory**, of **SECTION IV – BUSINESS AUTO CONDITIONS**:

(5) Anywhere in the world, except any country or jurisdiction while any trade sanction, embargo, or similar regulation imposed by the United States of America applies to and prohibits the transaction of business with or within such country or jurisdiction, for Covered Autos Liability Coverage for any covered "auto" that you lease, hire, rent or borrow without a driver for a period of 30 days or less and that is not an "auto" you lease, hire, rent or borrow from any of your "employees", partners (if you are a partnership), members (if you are a limited liability company) or members of their households.

(a) With respect to any claim made or "suit" brought outside the United States of America, the territories and possessions of the United States of America, Puerto Rico and Canada:

(i) You must arrange to defend the "insured" against, and investigate or settle any such claim or "suit" and keep us advised of all proceedings and actions.

(ii) Neither you nor any other involved "insured" will make any settlement without our consent.

(iii) We may, at our discretion, participate in defending the "insured" against, or in the settlement of, any claim or "suit".

(iv) We will reimburse the "insured" for sums that the "insured" legally must pay as damages because of "bodily injury" or "property damage" to which this insurance applies, that the "insured" pays with our consent, but only up to the limit described in Paragraph C., **Limits Of Insurance**, of **SECTION II – COVERED AUTOS LIABILITY COVERAGE**.

(v) We will reimburse the "insured" for the reasonable expenses incurred with our consent for your investigation of such claims and your defense of the "insured" against any such "suit", but only up to and included within the limit described in Paragraph C., **Limits Of Insurance**, of **SECTION II – COVERED AUTOS LIABILITY COVERAGE**, and not in addition to such limit. Our duty to make such payments ends when we have used up the applicable limit of insurance in payments for damages, settlements or defense expenses.

(b) This insurance is excess over any valid and collectible other insurance available to the "insured" whether primary, excess, contingent or on any other basis.

(c) This insurance is not a substitute for required or compulsory insurance in any country outside the United States, its territories and possessions, Puerto Rico and Canada.

COMMERCIAL AUTO

You agree to maintain all required or compulsory insurance in any such country up to the minimum limits required by local law. Your failure to comply with compulsory insurance requirements will not invalidate the coverage afforded by this policy, but we will only be liable to the same extent we would have been liable had you complied with the compulsory insurance requirements.

- (d) It is understood that we are not an admitted or authorized insurer outside the United States of America, its territories and possessions, Puerto Rico and Canada. We assume no responsibility for the furnishing of certificates of insurance, or for compliance in any way with the laws of other countries relating to insurance.

G. WAIVER OF DEDUCTIBLE – GLASS

The following is added to Paragraph D., **Deductible**, of **SECTION III – PHYSICAL DAMAGE COVERAGE**:

No deductible for a covered "auto" will apply to glass damage if the glass is repaired rather than replaced.

H. HIRED AUTO PHYSICAL DAMAGE – LOSS OF USE – INCREASED LIMIT

The following replaces the last sentence of Paragraph A.4.b., **Loss Of Use Expenses**, of **SECTION III – PHYSICAL DAMAGE COVERAGE**:

However, the most we will pay for any expenses for loss of use is \$65 per day, to a maximum of \$750 for any one "accident".

I. PHYSICAL DAMAGE – TRANSPORTATION EXPENSES – INCREASED LIMIT

The following replaces the first sentence in Paragraph A.4.a., **Transportation Expenses**, of **SECTION III – PHYSICAL DAMAGE COVERAGE**:

We will pay up to \$50 per day to a maximum of \$1,500 for temporary transportation expense incurred by you because of the total theft of a covered "auto" of the private passenger type.

J. PERSONAL PROPERTY

The following is added to Paragraph A.4., **Coverage Extensions**, of **SECTION III – PHYSICAL DAMAGE COVERAGE**:

Personal Property

We will pay up to \$400 for "loss" to wearing apparel and other personal property which is:

- (1) Owned by an "insured"; and

- (2) In or on your covered "auto".

This coverage applies only in the event of a total theft of your covered "auto".

No deductibles apply to this Personal Property coverage.

K. AIRBAGS

The following is added to Paragraph B.3., **Exclusions**, of **SECTION III – PHYSICAL DAMAGE COVERAGE**:

Exclusion 3.a. does not apply to "loss" to one or more airbags in a covered "auto" you own that inflate due to a cause other than a cause of "loss" set forth in Paragraphs A.1.b. and A.1.c., but only:

- If that "auto" is a covered "auto" for Comprehensive Coverage under this policy;
- The airbags are not covered under any warranty; and
- The airbags were not intentionally inflated.

We will pay up to a maximum of \$1,000 for any one "loss".

L. NOTICE AND KNOWLEDGE OF ACCIDENT OR LOSS

The following is added to Paragraph A.2.a., of **SECTION IV – BUSINESS AUTO CONDITIONS**:

Your duty to give us or our authorized representative prompt notice of the "accident" or "loss" applies only when the "accident" or "loss" is known to:

- You (if you are an individual);
- A partner (if you are a partnership);
- A member (if you are a limited liability company);
- An executive officer, director or insurance manager (if you are a corporation or other organization); or
- Any "employee" authorized by you to give notice of the "accident" or "loss".

M. BLANKET WAIVER OF SUBROGATION

The following replaces Paragraph A.5., **Transfer Of Rights Of Recovery Against Others To Us**, of **SECTION IV – BUSINESS AUTO CONDITIONS**:

5. Transfer Of Rights Of Recovery Against Others To Us

We waive any right of recovery we may have against any person or organization to the extent required of you by a written contract signed and executed prior to any "accident" or "loss", provided that the "accident" or "loss" arises out of operations contemplated by

COMMERCIAL AUTO

such contract. The waiver applies only to the person or organization designated in such contract.

N. UNINTENTIONAL ERRORS OR OMISSIONS

The following is added to Paragraph B.2., **Concealment, Misrepresentation, Or Fraud**, of SECTION IV – BUSINESS AUTO CONDITIONS:

The unintentional omission of, or unintentional error in, any information given by you shall not prejudice your rights under this insurance. However this provision does not affect our right to collect additional premium or exercise our right of cancellation or non-renewal.

**FOR
REFERENCE
ONLY**

POLICY NUMBER: TC2J-GLSA-260T3317-TIL-21

COMMERCIAL GENERAL LIABILITY
ISSUE DATE:

THIS ENDORSEMENT CHANGES THE POLICY. PLEASE READ IT CAREFULLY.

ADDITIONAL INSURED – DESIGNATED PERSON OR ORGANIZATION

This endorsement modifies insurance provided under the following:

COMMERCIAL GENERAL LIABILITY COVERAGE PART

SCHEDULE

Name of Additional Insured Person(s) or Organization(s):

Any person or organization that you agreed in a written contract or agreement to include as an additional insured on this Coverage Part, provided that such written contract or agreement was signed by you before, and is in effect when, the "bodily injury" or "property damage" occurs or the "personal and advertising injury" offense is committed and only for the limits of insurance agreed to in such written contract or agreement, or the limits of insurance of this policy, whichever is less.

Section II – Who Is An Insured is amended to include as an additional insured the person(s) or organization(s) shown in the Schedule, but only with respect to liability for "bodily injury", "property damage", "personal injury" or "advertising injury" caused, in whole or in part, by your acts or omissions or the acts or omissions of those acting on your behalf:

- A.** In the performance of your ongoing operations; or
- B.** In connection with your premises owned by or rented to you.

**FOR
REFERENCE
ONLY**

POLICY NUMBER: TC2J-GLSA-260T3317-TIL-21

ISSUE DATE: - -

THIS ENDORSEMENT CHANGES THE POLICY. PLEASE READ IT CAREFULLY.**DESIGNATED PERSON OR ORGANIZATION – NOTICE OF
CANCELLATION PROVIDED BY US**

This endorsement modifies insurance provided under the following:

ALL COVERAGE PARTS INCLUDED IN THIS POLICY**SCHEDULE****CANCELLATION:****Number of Days Notice:** 30**PERSON OR
ORGANIZATION:**

ANY PERSON OR ORGANIZATION TO WHOM YOU
HAVE AGREED IN A WRITTEN CONTRACT THAT
NOTICE OF CANCELLATION OF THIS POLICY
WILL BE GIVEN, BUT ONLY IF:

1. YOU SEND US A WRITTEN REQUEST TO
PROVIDE SUCH NOTICE, INCLUDING THE NAME
AND ADDRESS OF SUCH PERSON OR ORGANIZATION,
AFTER THE FIRST NAMED INSURED
RECEIVES NOTICE FROM US OF THE CANCELLATION
OF THIS POLICY; AND
2. WE RECEIVE SUCH WRITTEN REQUEST AT
LEAST 14 DAYS BEFORE THE BEGINNING OF
THE APPLICABLE NUMBER OF DAYS SHOWN IN
THIS ENDORSEMENT

ADDRESS:

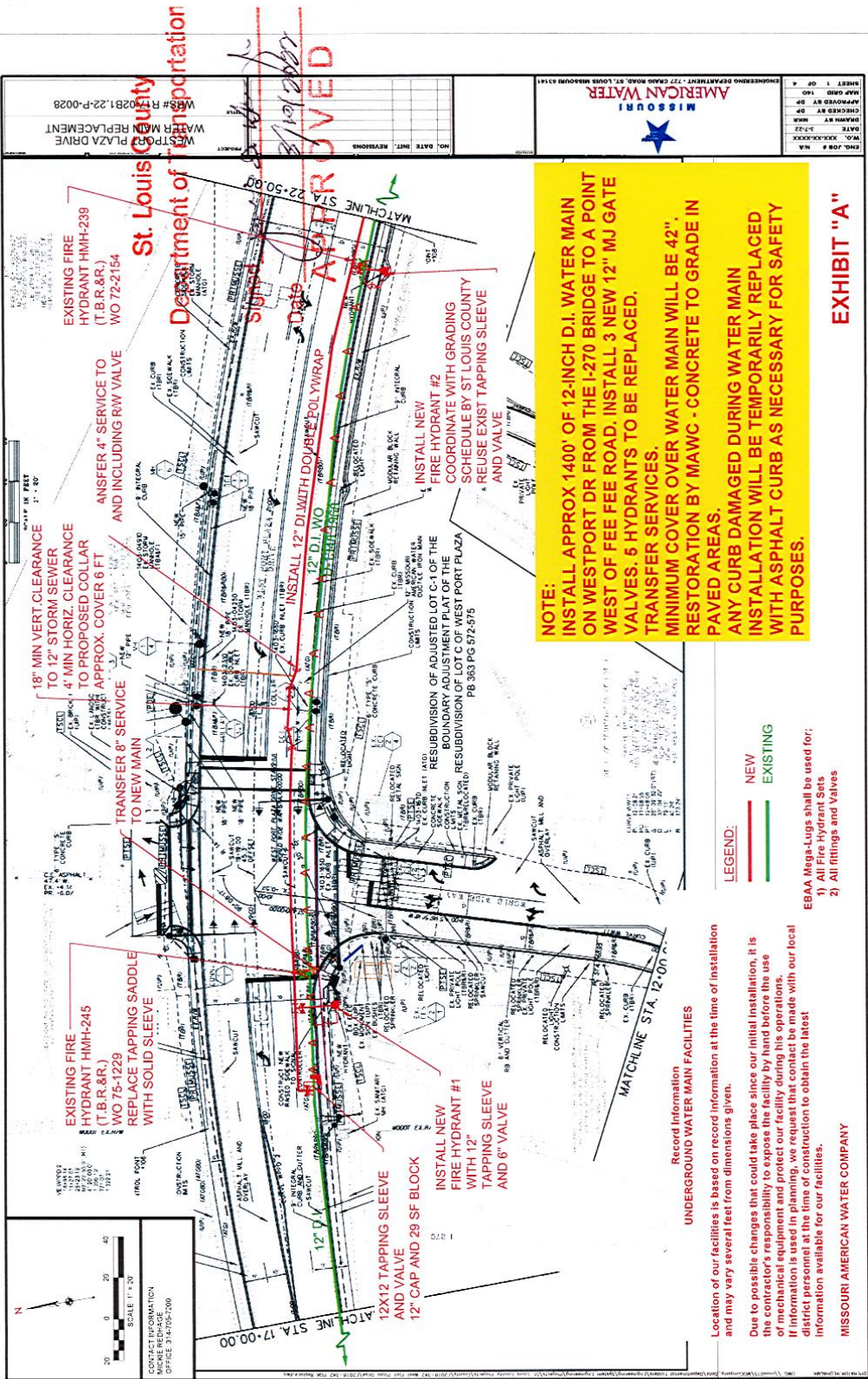
THE ADDRESS FOR THAT PERSON OR
ORGANIZATION INCLUDED IN SUCH WRITTEN
REQUEST FROM YOU TO US.

PROVISIONS

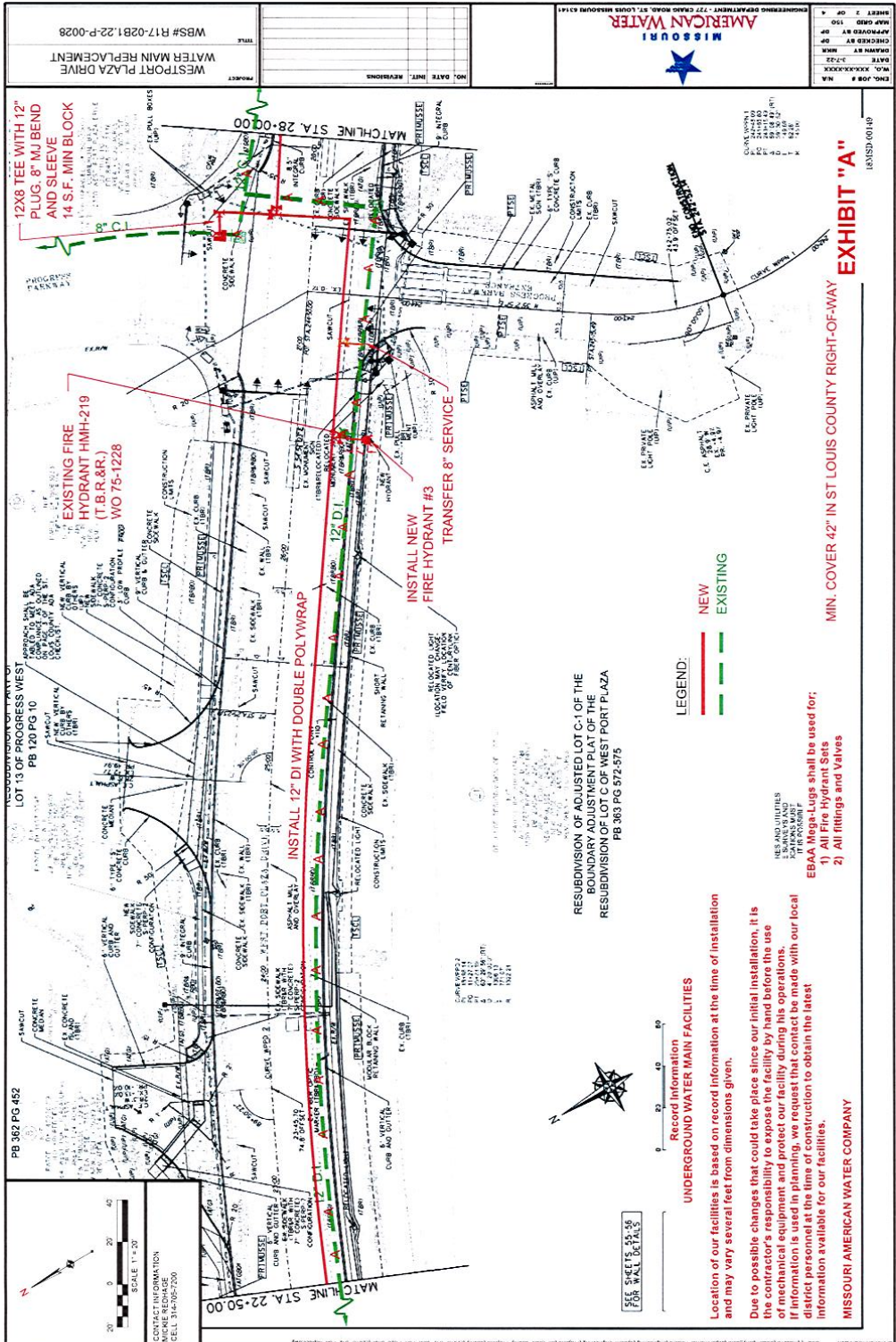
If we cancel this policy for any legally permitted reason other than nonpayment of premium, and a number of days is shown for Cancellation in the Schedule above, we will mail notice of cancellation to the person or organization shown in such Schedule. We will mail such notice to the address shown in the Schedule above at least the number of days shown for Cancellation in such Schedule before the effective date of cancellation.

**FOR
REFERENCE
ONLY**

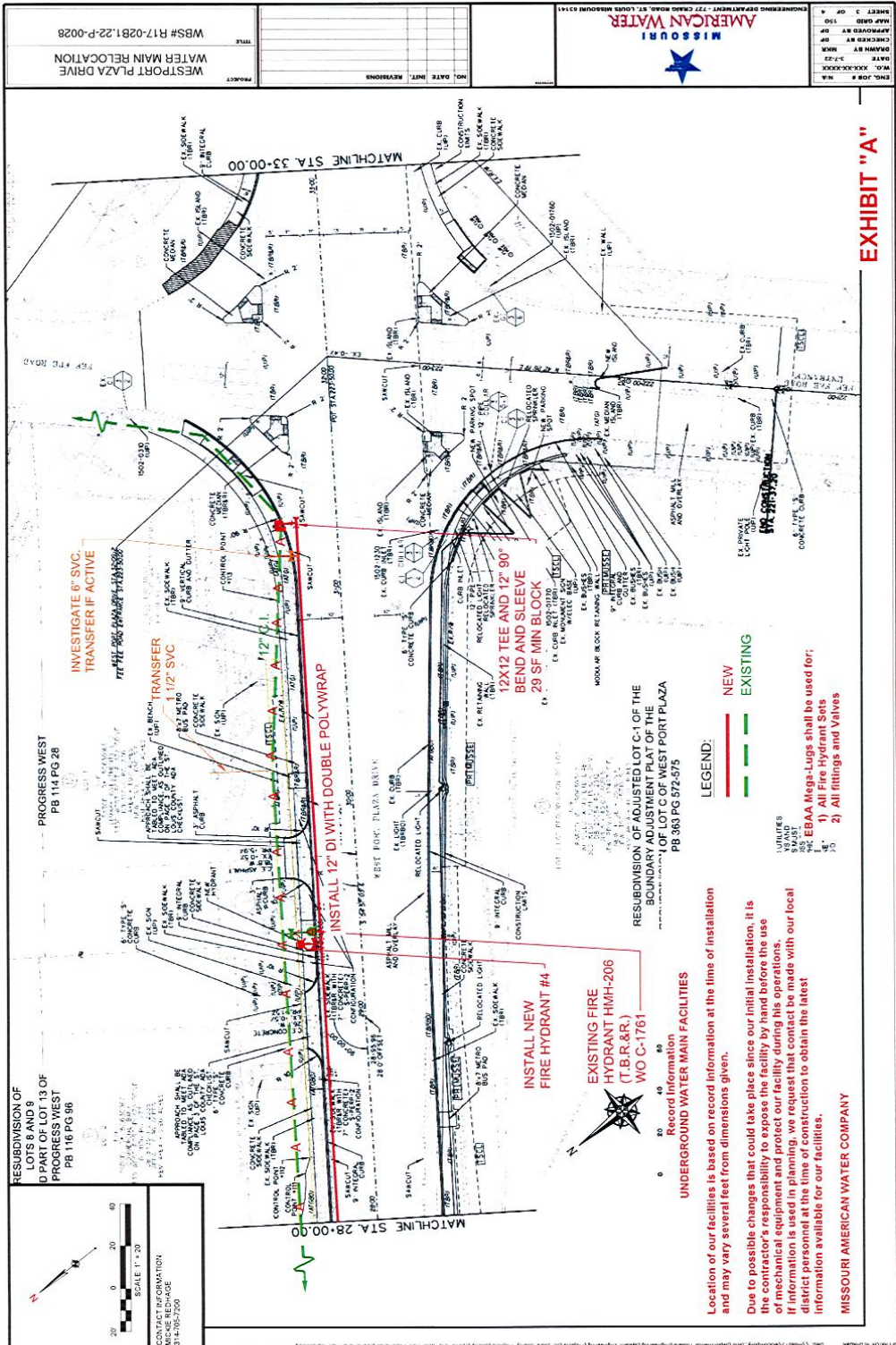
FOR
REFERENCE
ONLY



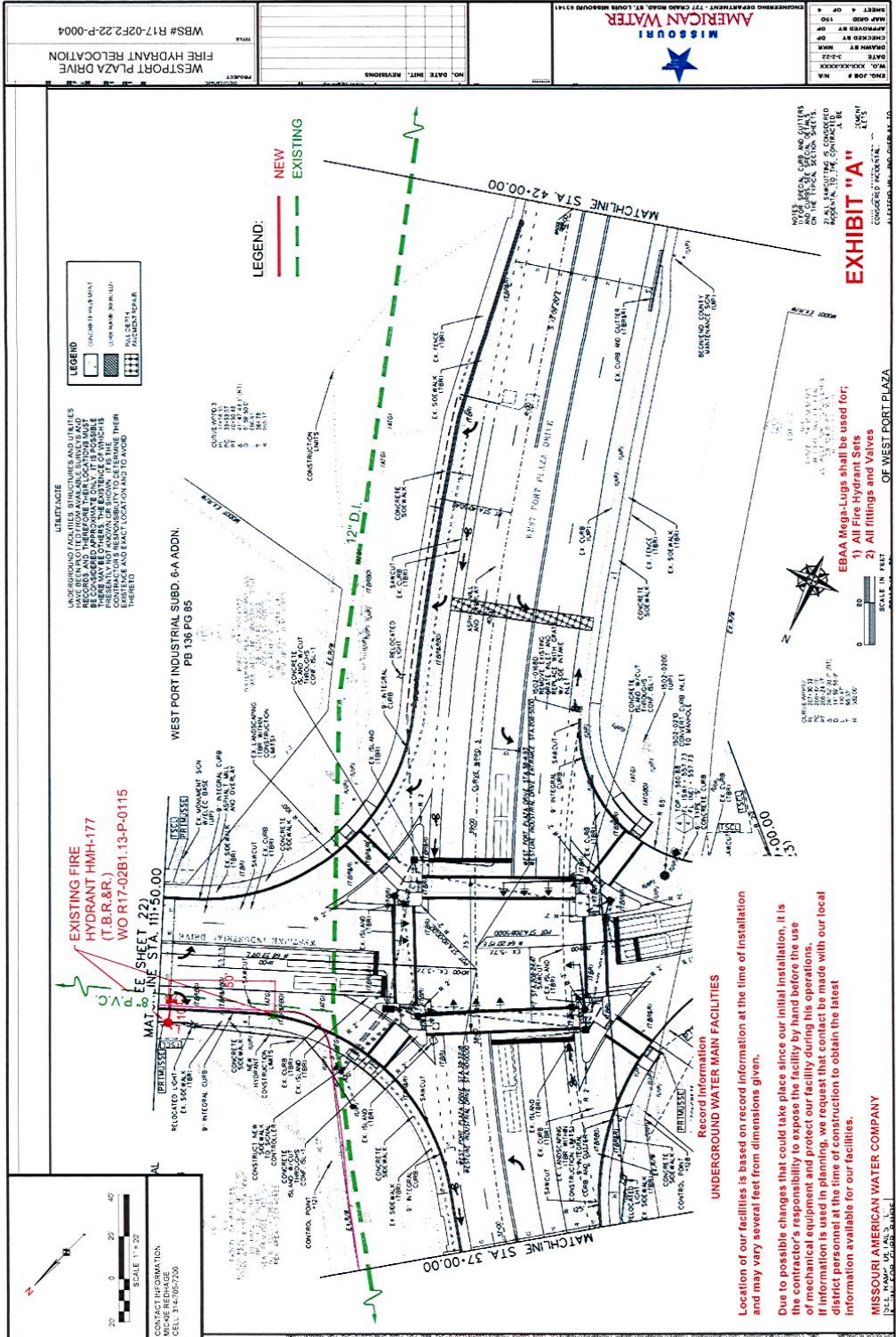
**FOR
REFERENCE
ONLY**



**FOR
REFERENCE
ONLY**



**FOR
REFERENCE
ONLY**



Addendum No. 1 **Item No. 3**

**West Port Plaza Drive - Marine Avenue Resurfacing
& West Port Plaza Drive Intersection Improvements
St. Louis County Project Nos. AR-1548 & AR-1673
Federal Project Nos. STP-9900(673) & CMAQ-9901(638)**

100.70.3 UTILITY COORDINATION

- A. For informational purposes only, the following is a list of names, addresses, and telephone numbers of the known Utility Companies in the area of the construction work for these improvements.

<u>Utility Name</u>	<u>Known Required Adjustment/ Relocation</u>	<u>Anticipated Relocation Completion Date</u>
Clark McLemore Ameren Missouri 12121 Dorsett Road Maryland Heights, MO 63043 314-830-8917 (O) cmclmore@ameren.com	Yes	T.B.D. (During Construction)
Kathleen A. Smith AT&T (Distribution) 402 N. 3 rd Street St. Charles, MO 63301 636-949-1312 (O) 636-448-9571 (M) ks9340@att.com	Yes	Relocation Complete
Jamie Scott – Sr. OSP Engineer Blue Bird Communications 10024 Office Center Ave., Suite 201 St. Louis, MO 63128 314-270-8738 (O) 314-220-8996 (M) James.Scott@bluebirdnetwork.com	None Anticipated	-
Mickie Redhage Missouri-American Water 727 Craig Road St. Louis, MO 63141 314-705-7200 (O) Mickie.Redhage@amwater.com	Yes	

**12-inch water main and
most fire hydrant
relocations starting
March 2022 (expected
completion before
construction of this
project).**

**1 fire hydrant and other
misc. adjustments to be
completed during
construction.**

Revision

#1

Addendum No. 1 Item No. 3

West Port Plaza Drive - Marine Avenue Resurfacing & West Port Plaza Drive Intersection Improvements St. Louis County Project Nos. AR-1548 & AR-1673 Federal Project Nos. STP-9900(673) & CMAQ-9901(638)

<u>Utility Name</u>	<u>Known Required Adjustment/ Relocation</u>	<u>Anticipated Relocation Completion Date</u>
Domenic Nicastro Verizon (MCI) Network Operations & Engineering 500 Technology Drive Weldon Spring, MO 63304 636-459-1600 (O) domenic.nicastro@verizon.com	Yes	T.B.D. (During Construction)
Jason Cantrell Sprint 800 Northwest Technology Drive Lee Summit MO 64086 1-913-488-8489 (O) jason.cantrell@sprint.com	Yes	Relocation Complete
Brian Langenbacher Spire Energy 4118 Shrewsbury Avenue Shrewsbury, MO 63119 314-768-7767 (O) brian.langenbacher@spireenergy.com	Yes	T.B.D. (During Construction)
Missouri Dept. of Transportation St. Louis Metro District 1590 Woodlake Drive Chesterfield, MO 63017 888-275-6636 (O) SLCR@modot.mo.gov	T.B.D.	T.B.D. (During Construction)
Tim Agler Edward D. Jones (Contractor) TSI Global Companies 700 Fountain Lakes Blvd. St. Charles, MO 63301 636-425-1388 (O) tagler@tsi-global.com	None Anticipated	-
Bill Carpenter CenturyLink (Lumen) Project File No. 112379 2342 Technology Dr., Suite 200 O'Fallon, MO 63368 636-357-8296 (O) William.B.Carpenter@centurylink.com	None Anticipated	-

Addendum No. 1 Item No. 3

**West Port Plaza Drive - Marine Avenue Resurfacing
& West Port Plaza Drive Intersection Improvements
St. Louis County Project Nos. AR-1548 & AR-1673
Federal Project Nos. STP-9900(673) & CMAQ-9901(638)**

<u>Utility Name</u>	<u>Known Required Adjustment/ Relocation</u>	<u>Anticipated Relocation Completion Date</u>
Jonathan C. Cardwell Marathon Pipe Line, LLC Right of Way Services 419-957-6805 (O) JoCardwell@marathonpetroleum.com	None Anticipated	-
Chris Shelton Spectrum Construction Coordinator 101 Northwest Plaza Drive St. Ann, MO 63074 314-386-1649 (O) chris.shelton@charter.com	None Anticipated	-
Anthony Guion Cable America Technical Supervisor 314-575-8909 (O) aguion@cablemo.com	None Anticipated	-
Steve Massmann Everstream Manager, Outside Plant 314-380-8462 (O) smassmann@everstream.net	T.B.D.	T.B.D. (During Construction)

1. St. Louis County does not warrant that the above listing or the depiction of utility lines of facilities on other bidding documents are complete or accurately reflect either all utilities or their precise locations within or adjacent to the project limits or the status of any relocation work. It is therefore, the responsibility of the contractor to verify the above listing information indicating existence, location, and status of any facility. Such verification includes direct contact with the listed utilities. Coordination regarding subsurface exploration (potholing) and/or coordination regarding the adjustment or relocation of facilities may be required, as determined by the Engineer.

B. Conflicts/Resolutions

1. Ameren Missouri has advised us that the existing power poles at approximate Sta. 14+00 (Rt.) and Sta. 18+00 (Rt.) and a power pedestal at Sta. 27+62 (Rt.) will be in conflict with the proposed roadway improvements. A plan of adjustment has been provided and approved for relocation of the said power poles. A copy of this plan of adjustment has been included at the rear of the construction plans for reference.

Addendum No. 1

Item No. 3

West Port Plaza Drive - Marine Avenue Resurfacing & West Port Plaza Drive Intersection Improvements St. Louis County Project Nos. AR-1548 & AR-1673 Federal Project Nos. STP-9900(673) & CMAQ-9901(638)

Ameren Missouri has also advised us that several existing roadway light poles along the west side (right side) of West Port Plaza Drive from Sta. 17+00 (Rt.) to Sta. 42+00 (Rt.) will also be in conflict with the proposed roadway improvements. A plan schematic and electrical details have been provided by Ameren; which detail the Contractor installing the light pole foundations, Ameren supplied pull boxes, and conduit. Ameren will be responsible for erecting the new light poles, installing the wire, and inserting the new LED lights. Lighting plans have been generated based on this information and included in the construction plans. An original copy of Ameren's plan schematic has been included at the rear of the construction plans for reference.

Ameren was provided an update regarding the project's construction schedule on December 10, 2021 (after the completion of condemnation proceedings and certification of right of way).

2. AT&T has advised us that an existing fiber optic vault at approximate Sta. 19+55 (Lt.) will be in conflict with the proposed roadway improvements. A plan of adjustment has been provided and approved for this conflict. A copy of this plan of adjustment has been included at the rear of the construction plans for reference.

The relocation of AT&T's vault has already been completed.

AT&T was provided an update regarding the project's construction schedule on December 10, 2021 (after the completion of condemnation proceedings and certification of right of way).

3. Bluebird has advised us that they have existing fiber optic lines that run along the east side (left side) of West Port Plaza Drive from the West Port Plaza Drive/World Wide Way intersection to the West Port Plaza Drive/Progress Parkway intersection. Depth information has been provided for an analysis of potential conflicts by the project design consultant; with no known conflicts noted. A copy of this as-built depth information has been included at the rear of the construction plans for reference.

Bluebird was provided an update regarding the project's construction schedule on December 10, 2021 (after the completion of condemnation proceedings and certification of right of way).

4. Missouri American Water Company (MAWC) has advised us that there are fire hydrants at the following locations that will be in conflict with the proposed roadway improvements:
 - West side (right side) of West Port Plaza Drive: Approx. Stations 18+50, 22+25, 26+55.
 - East side (left side) of West Port Plaza Drive: Approx. Station 29+25.
 - North side (left side) of Westline Industrial Drive: Approx. Station 111+00.

Addendum No. 1 Item No. 3

West Port Plaza Drive - Marine Avenue Resurfacing & West Port Plaza Drive Intersection Improvements St. Louis County Project Nos. AR-1548 & AR-1673 Federal Project Nos. STP-9900(673) & CMAQ-9901(638)

Revision

#1

MAWC has also advised us that fifty (50) feet of 12-inch watermain will be in conflict with the proposed storm sewer modifications along West Port Plaza Drive near the West Port Plaza Drive/World Wide Way intersection. **In addition, MAWC will be replacing an additional 1,320 feet of that same 12-inch watermain from I-270 to Fee Fee Road for maintenance purposes.**

A plan of adjustment has been provided and approved for these conflicts. A copy of this plan of adjustment has been included at the rear of the construction plans for reference.

Water valve adjustments will be needed at various locations throughout the project limits (see construction plans for locations).

MAWC has also advised us of several private service lines at the following locations that are not owned or maintained by MAWC:

- Southwest corner of the West Port Plaza Drive/World Wide Way intersection: 8" service line, vault, and small service line. Suggest locating facilities prior to placement of signal base.
- Approx. Sta. 20+20 (crossing proposed storm sewer between drainage structures 1/3 and 1/4: 4" private service line. Suggest locating facilities prior to installation of storm sewer.
- Vicinity of drainage structure 1/2.1: 4" private service line. Suggest locating facilities prior to installation of storm sewer.
- Southwest corner of the West Port Plaza Drive/Progress Parkway intersection: 8" service line. Suggest locating facilities prior to adjustment/relocation of water valves.

MAWC was provided an update regarding the project's construction schedule on December 10, 2021 (after the completion of condemnation proceedings and certification of right of way).

5. MCI/Verizon has advised us that they have 3 handholes at the West Port Plaza Drive/Westline Industrial Drive intersection that will be in conflict with the proposed roadway improvements. Via an on-site meeting with an MCI/Verizon representative, it was determined that these handholes could be adjusted during construction with minimal construction delays. A plan of adjustment has been provided and approved for these conflicts. A copy of this plan of adjustment has been included at the rear of the construction plans for reference.

MCI/Verizon was provided an update regarding the project's construction schedule on December 10, 2021 (after the completion of condemnation proceedings and certification of right of way).

Addendum No. 1

Item No. 3

West Port Plaza Drive - Marine Avenue Resurfacing & West Port Plaza Drive Intersection Improvements St. Louis County Project Nos. AR-1548 & AR-1673 Federal Project Nos. STP-9900(673) & CMAQ-9901(638)

6. Sprint has advised us that their fiber optic facilities are located within AT&T's duct banks; which enter the fiber optic vault noted in Item #2 above. No plan of adjustment has been provided.

The adjustment of Sprint's facilities has already been completed (during the relocation of AT&T's vault).

Sprint was provided an update regarding the project's construction schedule on December 10, 2021 (after the completion of condemnation proceedings and certification of right of way).

7. Spire has very recently advised us that there are 2 loss of grade conflicts with a 4" I.P. Main at the following locations:

- World Wide Way Station 10+50 Rt.
- Progress Parkway Entrance Station 244+21 Rt.

Spire has also advised us that there are no conflicts with an 8" Header Main and its branches that are present within the work area. Despite this provided information, the Contractor should note that construction of the proposed improvements may impact Spire's facilities at the following locations:

- West Port Plaza Drive Station 19+00 Rt. – installation of proposed curb inlet #2-2 and the proposed storm sewer pipe from existing curb inlet #2-3 to proposed curb inlet #2-2 on World Wide Way.
- West Port Plaza Drive Station 37+75 Rt. & Station 39+00 Rt. – construction of the new pavement, concrete curb, and appurtenances on the 2 western quadrants of the West Port Plaza Drive/Westline Industrial Drive intersection.

Subsurface exploration (potholing) and/or coordination regarding adjustment or relocation of these facilities may be required.

Gas valve adjustments will be needed at various locations throughout the project limits (see construction plans for locations).

Spire was provided an update regarding the project's construction schedule on December 10, 2021 (after the completion of condemnation proceedings and certification of right of way).

8. The Missouri Department of Transportation (MoDOT) has advised that they have existing Intelligent Transportation System (ITS) facilities along Interstate 270. Utility locates will need to be requested via Missouri One-Call to verify the location of said facilities prior to construction. Please refer to Job Special Provision Nos. 900.30.22, 1200.90.6, and 1200.90.18 for additional information/requirements regarding the potential relocation of MoDOT ITS facilities.

Addendum No. 1
Item No. 3

**West Port Plaza Drive - Marine Avenue Resurfacing
& West Port Plaza Drive Intersection Improvements
St. Louis County Project Nos. AR-1548 & AR-1673
Federal Project Nos. STP-9900(673) & CMAQ-9901(638)**

9. Everstream has very recently advised us that they have existing facilities along the north side of West Port Plaza Drive from Glenmeade Drive to Fee Fee Road. Despite receiving limited installation depth information and a no conflict response, the Contractor should note that construction of the proposed improvements may impact Everstream's facilities at the following locations:
- West Port Plaza Drive Station 19+19 Lt. – installation of proposed traffic signal equipment may require the relocation of Everstream's facilities.
 - West Port Plaza Drive Station 20+00 Lt. – installation of a proposed hydrodynamic separator and storm sewer structures/pipes may require the relocation of Everstream's facilities.
 - West Port Plaza Drive Station 19+19 Lt. to Station 26+50 Lt. – earthwork/grading due to the widening of West Port Plaza Drive will likely reduce the depth of Everstream's facilities.

Subsurface exploration (potholing) and/or coordination regarding adjustment or relocation of these facilities may be required.

Everstream was provided an update regarding the project's construction schedule on January 25, 2022.

- C. The contractor agrees that any effects of the presence of the utilities, their relocation, contractor's coordination of work with the utilities and any delay in utility relocation shall not be compensable as a suspension of work, extra work, a change in the work, as a differing site condition or otherwise including, but without limitation, delay, impact, incidental or consequential damages. The contractor's SOLE REMEDY for the effects of the presence of utilities, delay in their relocation or any other effects shall be an excusable delay as provided in Section 105.7.3. The contractor waives, for itself, its subcontractors and suppliers the compensability of the presence of utilities, delay in their relocation, and any cost to the contractor, its subcontractors, and suppliers in any claim or action arising out of or in relation to the work under the contract.
1. The contractor's Work Schedule, required by Section 107.5.1 of the St. Louis County Standard Specifications for Road and Bridge Construction, shall reflect coordination of the contractor's work with that of utility relocation including, without limitation, all dependencies of the contractor's or its subcontractor's work upon relocation of utility lines and facilities and the effects of the utility relocations on the required order of work provided in other parts of the contract documents.
 2. The contractors shall be solely responsible and liable for incidental and consequential damages, to any utility facilities or interruption of the service caused by it or its subcontractor's operations. The contractor shall hold and save harmless St. Louis County from all damages to any utility facilities or interruption of service by it or its subcontractors' operations.
 3. No direct payment will be made for the contractor's compliance with above special provision.

Addendum No. 1

Item No. 3

West Port Plaza Drive - Marine Avenue Resurfacing & West Port Plaza Drive Intersection Improvements St. Louis County Project Nos. AR-1548 & AR-1673 Federal Project Nos. STP-9900(673) & CMAQ-9901(638)

4. The requirements of this Special Provision are in addition to or supplement to Sections 105.7 through 105.7.6 of the Specifications and are not a replacement of them except, unless and only to the extent there is direct conflict between these provisions and those of the Specifications.
- D. It is the responsibility of the Contractor and sub-contractors performing work to contact the Missouri One Call System, Inc. at 1-800-344-7483 (and also St. Louis County Operations Division about signal and/or lighting conduit at 314-615-0215) at least two (2) full working days, but not more than ten (10) working days, before commencing the excavation activity, as per Missouri State Law. The Contractor requesting the locations shall provide all utilities with the project number and area. He shall also specify on which streets construction will be performed and what dates it will begin. If only parts of a street are to be done, the Contractor shall provide street segments affected between the closest intersections. Specific start dates must be given for each street so all utilities can schedule the field locations.
- E. It shall be noted by the contractor that MoDOT is a member of Missouri One Call (800 Dig Rite). Some work on this project may be in the vicinity of MoDOT utility facilities, which includes but is not limited to traffic signal cables, highway lighting conduits, ITS cables, cathodic protection cables, etc. Prior to beginning work, the contractor shall request locates from Missouri One Call. The contractor shall also complete the Notice of Intent to Perform Work form located at the Missouri Department of Transportation website:

<https://www.modot.org/notice-intent>

The contractor shall submit the form over the web (preferred method) or by fax to the numbers on the printed form. The notice must be submitted a minimum of 2 and a maximum of 10 working days prior to excavation just as Missouri One Call requires.

SUB-TOTALS	TOTAL	UNIT	ITEM NO.	DESCRIPTION	REMARKS	SUB-TOTALS	TOTAL	UNIT	ITEM NO.	DESCRIPTION	REMARKS
				ROADWAY ITEMS						STRUCTURAL ITEMS	
2	2	L.S.	201-20.10	CLEARING AND GRUBBING	CMAQ = 1 Lump Sum, Non-Fed. Funded = 1 Lump Sum	1	1	L.S.	202-10.25	REMOVAL OF RETAINING WALLS	CMAQ = 1 Lump Sum (Not in B Sheets)
8	8	INCH	201-20.14	TREE REMOVAL	Includes stump removal 2' below grade.	20.9	20.9	C.Y.	703-40.09	CLASS "B-1" CONCRETE (RETAINING WALLS)	
7	7	EACH	201-20.22	TREE REMOVAL, 6" - 15"	Includes stump removal 2' below grade.	2930	2930	S.F.	703-90.15	MODULAR BLOCK WALL (H<4')	
5	5	EACH	201-20.23	TREE REMOVAL, OVER 15"	Includes stump removal 2' below grade.	1510	1510	LBS.	710-60.00	REINFORCING STEEL (EPOXY-COATED) (GRADE 60)	
3	3	L.S.	202-20.10	REMOVAL OF IMPROVEMENTS	Lump Sum = 1 each for CMAQ, STP, Non-Fed. (Not in B Sheets)						
1607	1607	S.Y.	202-22.30	REMOVAL OF RIGID PAVEMENT						COUNTY TRAFFIC SIGNAL ITEMS	
3780.2	3780.2	C.Y.	203-10.00	CLASS "A" EXCAVATION		1	1	EACH	904-01.14	SIGNAL HEAD, TYPE 4T	Not in B Sheets (See Traffic Signal Plans)
1	1	L.S.	203-10.30	LAND DISTURBANCE PERMITS	Not in B Sheets.	4	4	EACH	904-02.13	SIGNAL HEAD, TYPE 3S	Not in B Sheets (See Traffic Signal Plans)
9189.1	9189.1	S.Y.	304-05.04	TYPE 5 AGGREGATE BASE (4" THICK)		4	4	EACH	904-02.14	SIGNAL HEAD, TYPE 4S	Not in B Sheets (See Traffic Signal Plans)
2448.3	2570.8	TON	404-09.04	SUPERPAVE ASPHALTIC CONCRETE MIXTURE SP95 (PG70-22)D	Includes 5% extra for contingency.	3	3	EACH	904-02.15	SIGNAL HEAD, TYPE 5S	Not in B Sheets (See Traffic Signal Plans)
3427.6	3599.2	TON	404-12.72	SUPERPAVE ASPHALTIC CONCRETE MIXTURE SP125 (PG70-22)DLP	Includes 5% extra for contingency.	3	3	EACH	904-02.34	SIGNAL HEAD, TYPE 34S	Not in B Sheets (See Traffic Signal Plans)
1023.6	1074.9	TON	405-30.10	TYPE "C" BITUMINOUS CONCRETE (PAVEMENT)	Includes 5% extra for contingency.	26	26	EACH	904-05.43	SIGNAL HEAD, TYPE 3B, TERMINAL COMPARTMENT & ASTRO BRACKET	Not in B Sheets (See Traffic Signal Plans)
560.0	588.1	TON	405-30.30	TYPE "X" BITUMINOUS CONCRETE (BASE)	Includes 5% extra for contingency.					MOUNTING	Not in B Sheets (See Traffic Signal Plans)
5830	6130	GAL	407-10.27	TACK-EMULSIFIED ASPHALT (SS-1H)	Includes 5% extra for contingency.	8	8	EACH	904-05.44	SIGNAL HEAD, TYPE 4B, TERMINAL COMPARTMENT & ASTRO BRACKET	Not in B Sheets (See Traffic Signal Plans)
37408	37408	S.Y.	412-10.04	PAVEMENT SURFACING AND TEXTURING (0" TO 4"), CONCRETE OR ASPHALT						MOUNTING	Not in B Sheets (See Traffic Signal Plans)
1356	1356	S.Y.	412-10.50	PAVEMENT SURFACING AND TEXTURING (DEPTH TRANSITION)		3	3	EACH	904-05.45	SIGNAL HEAD, TYPE 5B CLUSTER ASSEMBLY, TERMINAL COMPARTMENT &	Not in B Sheets (See Traffic Signal Plans)
120.1	120.1	S.Y.	502-10.17	CONCRETE PAVEMENT (7" NON-REINFORCED), VERY EARLY STRENGTH						ASTRO BRACKET MOUNTING	Not in B Sheets (See Traffic Signal Plans)
81.2	81.2	S.Y.	502-11.06	CONCRETE PAVEMENT (6" NON-REINFORCED)		28	28	EACH	904-24.01	SIGNAL HEAD, TYPE 1S, PEDESTRIAN	Not in B Sheets. (See Traffic Signal Plans)
2908.8	2908.8	S.Y.	502-11.09	CONCRETE PAVEMENT (9" NON-REINFORCED)		16	16	EACH	904-28.07	POST, SIGNAL, W/ SQ. PEDESTAL BASE AND POST CAP, 7' MAXIMUM TOTAL HEIGHT	Not in B Sheets. (See Traffic Signal Plans)
279.6	279.6	S.Y.	502-11.76	REMOVE AND REPLACE CONCRETE PAVEMENT (6" NON-REINFORCED), INCLUDES						ALUMINUM	
				CURBS		1	1	EACH	904-29.14	POST, EXTENSION, 4-1/2" O.D. x 14', ALUMINUM, W/ MOUNTING HARDWARE AND	Not in B Sheets. (See Traffic Signal Plans)
43.6	43.6	S.Y.	502-12.57	IMPRINTED COLORED CONCRETE PAVEMENT (7" NON-REINFORCED)						POST CAP	
14	14	EACH	603-10.35	ADJUST WATER SERVICE VALVE BOX TO GRADE		1	1	EACH	904-32.14	19' POLE, W/ 14' MAST ARM, STEEL	Not in B Sheets. (See Traffic Signal Plans)
4	4	EACH	604-12.01	SINGLE CURB INLET, UNTRAPPED		1	1	EACH	904-32.20	19' POLE, W/ 20' MAST ARM, STEEL	Not in B Sheets. (See Traffic Signal Plans)
3	3	EACH	604-12.02	DOUBLE CURB INLET, UNTRAPPED		1	1	EACH	904-32.22	19' POLE, W/ 22' MAST ARM, STEEL	Not in B Sheets. (See Traffic Signal Plans)
7	7	EACH	604-19.22	2-GRATE INLET, WITH SIDE INTAKE UNIT, UNTRAPPED		2	2	EACH	904-32.26	19' POLE, W/ 26' MAST ARM, STEEL	Not in B Sheets. (See Traffic Signal Plans)
3	3	EACH	604-19.27	MANHOLE		2	2	EACH	904-32.30	19' POLE, W/ 30' MAST ARM, STEEL	Not in B Sheets. (See Traffic Signal Plans)
9	9	EACH	604-20.20	ADJUSTING BASIN OR INLET		1	1	EACH	904-32.32	19' POLE, W/ 32' MAST ARM, STEEL	Not in B Sheets. (See Traffic Signal Plans)
8	8	EACH	604-20.30	ADJUSTING MANHOLE TO GRADE		1	1	EACH	904-32.34	19' POLE, W/ 34' MAST ARM, STEEL	Not in B Sheets. (See Traffic Signal Plans)
1	1	EACH	604-23.08	HYDRODYNAMIC SEPARATOR (8')		1	1	EACH	904-32.38	19' POLE, W/ 38' MAST ARM, STEEL	Not in B Sheets. (See Traffic Signal Plans)
2	2	EACH	604-25.40	CONVERT INLET TO MANHOLE AND ADJUST TO GRADE		4	4	EACH	904-32.40	19' POLE, W/ 40' MAST ARM, STEEL	Not in B Sheets. (See Traffic Signal Plans)
6	6	EACH	604-40.11	PIPE COLLAR, TYPE "A" (CONCRETE)		2	2	EACH	904-32.42	19' POLE, W/ 42' MAST ARM, STEEL	Not in B Sheets. (See Traffic Signal Plans)
1	1	EACH	604-52.99	CONNECTING PIPE TO EXISTING STRUCTURE		4	4	EACH	904-43.88	CONTROLLER, FULLY ACTUATED, (8 PHASE TIMER, IN ALUMINUM CABINET	Not in B Sheets. (See Traffic Signal Plans)
275.6	275.6	S.Y.	608-10.00	CONCRETE MEDIAN						APPROX. 55" H x 44"W x 26" D, WIRED FOR 8 PHASE OPERATION) W/	
152.0	152.0	S.Y.	608-50.06	PAVED DRIVEWAY APPROACH (6")						INTERNAL FIBER OPTIC MODEM AND TERMINATION HOUSING, TS2, TYPE 2,	
640.1	640.1	S.Y.	608-50.07	PAVED DRIVEWAY APPROACH (7")						W/ BATTERY BACKUP	
948	948	L.F.	609-10.10	CONCRETE CURB, TYPE "S"		30	30	EACH	904-49.22	DETECTOR, PEDESTRIAN PUSH BUTTON, APS, FREEZEPROOF	Not in B Sheets. (See Traffic Signal Plans)
275	275	L.F.	609-10.53	CURB AND GUTTER, VERTICAL		29	29	EACH	904-49.35	DETECTOR, VEHICLE INDUCTION LOOP, CARD RACK MTG., 2 CHANNEL	Not in B Sheets. (See Traffic Signal Plans)
419	419	L.F.	609-10.70	CURB AND GUTTER, VERTICAL (9")						W/ DELAY AND EXTENSION TIMING AND RELAY OUTPUTS	
1047	1047	L.F.	609-10.93	REMOVE AND REPLACE CURB AND GUTTER (VARIOUS WIDTHS), VERTICAL/		1	1	EACH	904-49.51	PAN TILT ZOOM (PTZ) INTERNET PROTOCOL VIDEO SURVEILLANCE CAMERA	Not in B Sheets. (See Traffic Signal Plans)
				MOUNTABLE						SYSTEM (CAMERA W/ BRACKET, MANAGED ETHERNET SWITCH, AND MISC. CABLES)	
29	29	L.F.	609-20.11	INTEGRAL CURB (6" HEIGHT AND UNDER)		1	1	EACH	904-49.52	SOFTWARE LICENSE, PTZ CAMERA	Not in B Sheets. (See Traffic Signal Plans)
3595	3595	L.F.	609-20.21	INTEGRAL CURB (OVER 6" HEIGHT)		580	580	L.F.	904-51.00	CONDUIT, 1"	
12	12	L.F.	609-30.03	ASPHALT CURB 3"		1810	1810	L.F.	904-51.50	CONDUIT, 1-1/2"	
40	40	L.F.	609-30.10	ASPHALT CURB		1570	1570	L.F.	904-52.00	CONDUIT, 2"	Not in B Sheets. (See Traffic Signal Plans)
7	7	C.Y.	611-20.95	GROUT FOR ABANDONED SEWERS		130	130	L.F.	904-53.00	CONDUIT, 3"	
21	21	EACH	612-10.30	MOVEABLE BARRICADES (STANDARD)	Not in B Sheets. (See Traffic Control Plans)	1230	1230	L.F.	904-54.00	CONDUIT, 4"	Not in B Sheets. (See Traffic Signal Plans)
3	3	L.S.	612-30.10	STANDARD TRAFFIC CONTROL DEVICES	Lump Sum = 1 each for CMAQ, STP, Non-Fed. (Not in B Sheets)	1	1	EACH	904-74.99	CONDUIT REPAIR (LOCATE BROKEN CONDUIT, EXCAVATE, REMOVE EXISTING	Not in B Sheets. (See Traffic Signal Plans)
3	3	EACH	612-60.92	ARROW PANEL, TYPE "B" (NOISELESS), RENTAL	Not in B Sheets. (See Traffic Control Plans)					CABLE REPAIR/REPLACE CONDUIT, REINSTALL CABLE, BACKFILL AND RESTORE)	
3	3	EACH	612-70.20	CHANGEABLE MESSAGE BOARD (NOISELESS), RENTAL	Not in B Sheets. (See Traffic Control Plans)					(DOES NOT INCLUDE SIDEWALK OR PAVEMENT REMOVAL AND REPLACEMENT)	
155.2	155.2	S.Y.	613-10.18	JOINT REPAIR - TRANSVERSE, HIGH EARLY STRENGTH		260	260	L.F.	904-82.06	CABLE, POWER, #6 GAUGE, 1 CONDUCTOR	Not in B Sheets. (See Traffic Signal Plans)
12	12	MO.	615-10.00	OFFICE FOR ENGINEER	Not in B Sheets.	2720	2720	L.F.	904-83.05	CABLE, SIGNAL, #14 GAUGE, 5 CONDUCTOR	Not in B Sheets. (See Traffic Signal Plans)
157	157	S.F.	616-10.05	CONSTRUCTION SIGNS	Not in B Sheets. (See Traffic Control Plans)	10720	10720	L.F.	904-83.07	CABLE, SIGNAL, #14 GAUGE, 7 CONDUCTOR	Not in B Sheets. (See Traffic Signal Plans)
60	60	EACH	616-10.25	CHANNELIZER (TRIM-LINE)	Not in B Sheets. (See Traffic Control Plans)	780	780	L.F.	904-84.00	WIRE, STRANDED GROUND, #6 GAUGE	Not in B Sheets. (See Traffic Signal Plans)
3	3	L.S.	619-00.00	MOBILIZATION	Lump Sum = 1 each for CMAQ, STP, Non-Fed. (Not in B Sheets)	1120	1120	L.F.	904-85.05	CABLE, DETECTOR LOOP, # 14 GAUGE, 1 CONDUCTOR, W/ TUBE JACKET	Not in B Sheets. (See Traffic Signal Plans)
3990	3990	L.F.	620-99.75	REMOVAL OF PAVEMENT STRIPING, PAINT						(IN CONDUIT AND PULL BOXES)	
1080	1080	L.F.	621-10.00	TEMPORARY PAVEMENT STRIPING, PAINT (INCLUDES REMOVAL IF NECESSARY)	Not in B Sheets. (See Traffic Control Plans)	7640	7640	L.F.	904-85.06	CABLE, DETECTOR LOOP, #14 GAUGE, 1 CONDUCTOR, W/ TUBE JACKET	Not in B Sheets. (See Traffic Signal Plans)
130	130	L.F.	621-20.11	PERMANENT WHITE PAVEMENT STRIPING, PAINT						(IN SAWED SLOT)	
3	3	EACH	621-20.15	PERMANENT PAVEMENT MARKINGS ARROWS, PAINT		15050	15050	L.F.	904-85.18	CABLE, PUSH BUTTON AND/OR DETECTOR LOOP LEAD-IN, #18 GAUGE,	Not in B Sheets. (See Traffic Signal Plans)
2	2	EACH	629-00.00	RELOCATE EXISTING MONUMENT SIGN	Not in B Sheets.					2 CONDUCTOR (SHIELDED)	
4	4	EACH	629-00.01	RESTORE MONUMENT SIGN ELECTRICAL CONNECTION	Not in B Sheets.	1250	1250	L.F.	904-85.34	CABLE, COMMUNICATION, #18 GAUGE, 4 CONDUCTOR (A.P.S.)	Not in B Sheets. (See Traffic Signal Plans)
6	6	L.F.	726-54.18	18" POLYVINYL CHLORIDE PIPE		1050	1050	L.F.	904-85.36	CABLE, COMMUNICATION, FIBER OPTIC, 36 FIBERS (30 SINGLE-MODE AND	Not in B Sheets. (See Traffic Signal Plans)
8	8	L.F.	726-54.24	24" POLYVINYL CHLORIDE PIPE						6 MULTI-MODE)	
105	105	L.F.	726-70.12	12" STORM SEWER PIPE (CLASS III RCP OR POLYPROPYLENE, GASKET TYPE)		140	140	L.F.	904-85.81	CABLE, COMMUNICATION, POWER, PTZ CAMERA, #24 GAUGE, 4 PAIR (SHIELDED)	Not in B Sheets. (See Traffic Signal Plans)
9	9	L.F.	726-70.15	15" STORM SEWER PIPE (CLASS III RCP OR POLYPROPYLENE, GASKET TYPE)		3	3	EACH	904-86.01	POWER SUPPLY ASSEMBLY, ON WOOD UTILITY POLE, 120/240 VOLT	Not in B Sheets. (See Traffic Signal Plans)
236	236	L.F.	726-70.18	18" STORM SEWER PIPE (CLASS III RCP OR POLYPROPYLENE, GASKET TYPE)		12	12	EACH	904-88.01	PULL BOX, SINGLE, CONCRETE	Not in B Sheets. (See Traffic Signal Plans)
0.1	0.1	ACRE	802-10.00	TYPE 1 MULCH (VEGETATIVE)		2	2	EACH	904-88.02	PULL BOX, DOUBLE, CONCRETE	Not in B Sheets. (See Traffic Signal Plans)
10	10	C.Y.	802-60.90	SHREDDED HARDWOOD BARK MULCH	Not in B Sheets.	8	8	EACH	904-89.17	PREFORMED PULL BOX (17" Wx30"Lx26" MIN. H), REINFORCED POLYMER	Not in B Sheets. (See Traffic Signal Plans)
4370	4370	S.Y.	803-10.00	SODDING						CONCRETE	
917	917	S.Y.	803-20.00	STRIP SODDING		1	1	EACH	904-90.17	PREFORMED PULL BOX (17" Wx30"Lx26" MIN. H), REINFORCED POLYMER	Not in B Sheets. (See Traffic Signal Plans)
25	25	EACH	806-45.08	INLET PROTECTION DEVICE, SINGLE UNIT - FILTER SOCK/ROLL						CONCRETE W/ 1' CONCRETE APRON	
4	4	EACH	806-45.09	INLET PROTECTION DEVICE, DOUBLE UNIT - FILTER SOCK/ROLL		16	16	EACH	904-91.43	BASE, TYPE P-3, CONCRETE	Not in B Sheets. (See Traffic Signal Plans)
1	1	L.S.	806-55.00	STORM WATER POLLUTION PREVENTION PLAN (SWPPP)	CMAQ = 1 Lump Sum (Not in B Sheets)	5	5	EACH	904-91.56	BASE, TYPE B-6, CONCRETE	Not in B Sheets. (See Traffic Signal Plans)
1336	1336	L.F.	806-70.00	SILT FENCE		4	4	EACH	904-91.57	BASE, TYPE B-7, CONCRETE	Not in B Sheets. (See Traffic Signal Plans)
2	2	EACH	904-10.11	RELOCATION OF EXISTING ENTRANCE LIGHT POLE		7	7	EACH	904-91.59	BASE, TYPE B-9, CONCRETE	Not in B Sheets. (See Traffic Signal Plans)
12	12	EACH	904-10.12	LIGHT POLE POWER PEDESTAL (AMEREN SUPPLIED)		1	1	EACH	904-91.88	BASE, TYPE D-8PH, CONCRETE	Not in B Sheets. (See Traffic Signal Plans)
						3	3	EACH	904-93.10	TEMPORARY SIGNAL INSTALLATION	Not in B Sheets. (See Traffic Signal Plans)
						11	11	EACH	904-95.10	OPENING DRILLED IN EXISTING CONCRETE PULL BOX	Not in B Sheets. (See Traffic Signal Plans)

COUNTY PROJECT NO.
AR-1548/AR-1673

FEDERAL PROJECT NO.
STP-9900(673)C/MAQ-9901(638)

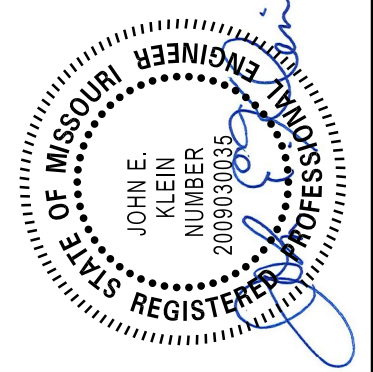
E-W GATEWAY TIP NO.
6503S-16/674E-17

MSD:
18MSD-00149

MSD BASE MAP:
14N, 14O, 15N & 15O

REV.	DATE	BY	APP.	DESCRIPTION
1	9/26/22			ADJUSTMENTS TO TREE REMOVAL QUANTITIES FOR REMOVAL OF SELECT TREES BY STUDY

DISCLAIMER OF LIABILITY
I hereby specify that the documents intended to be authorized by my seal are those of the County of St. Louis and I hereby disclaim any responsibility for all other drawings, specifications, or documents or instruments relating to or intended to be used for any part of the engineering project to survey.



DATE: 2/17/2022

HORNERS SHIFFRIN

401 S. 18TH STREET, SUITE 400
SAINT LOUIS, MISSOURI 63103
314.551.1200 FAX: 314.551.1209
WWW.HORNERSHIFFRIN.COM

DISCLAIMER: PROFESSIONAL ENGINEERING CERTIFICATE OF AUTHORITY: 0110169

St. Louis

COUNTY

TRANSPORTATION

PUBLIC WORKS

WEST PORT PLAZA DRIVE IMPROVEMENTS

SUMMARY OF QUANTITIES

SHEET 1 OF 2

DESIGNED:
J. E. KLEIN

DRAWN:
J. E. KLEIN

CHECKED:
R. D. ASHRAFAZADEH

SHEET SEQUENCE:
2 OF 155

201-20.10 CLEARING AND GRUBBING										202-22.30 REMOVAL OF RIGID PAVEMENT										304-05.04 TYPE 5 AGGREGATE BASE (4" THICK)									
CMAQ-9901(638)										Includes removal of curb and gutters										CMAQ-9901(638)									
LOCATION										QUANTITY										QUANTITY									
(LS)										REMARKS										S.Y. (0.1)									
WEST PORT PLAZA DRIVE										1										CMAQ = 1.4 Acres									
SUBTOTAL:										1																			
NON-FEDERALLY FUNDED																													
LOCATION										QUANTITY										QUANTITY									
(LS)										REMARKS										S.Y. (0.1)									
WEST PORT PLAZA DRIVE										1										Non-Federally Funded = 0.1 Acres									
SUBTOTAL:										1																			
TOTAL:										2																			
201-20.14 TREE REMOVAL																													
Includes stump removal 2" below grade.																													
CMAQ-9901(638)																													
LOCATION										STATION										SIDE									
WEST PORT PLAZA DRIVE										22+76.31										RIGHT									
WEST PORT PLAZA DRIVE										24+54.98										RIGHT									
WEST PORT PLAZA DRIVE										25+69.34										RIGHT									
SUBTOTAL:																				-42- 8									
NON-FEDERALLY FUNDED																													
LOCATION										STATION										SIDE									
PROGRESS PARKWAY ENTRANCE										243+02.47										RIGHT									
SUBTOTAL:																				-4- 0									
TOTAL:																				-46- 8									
201-20.22 TREE REMOVAL, 6"-15"																													
Includes stump removal 2" below grade.																													
CMAQ-9901(638)																													
LOCATION										STATION										SIDE									
WEST PORT PLAZA DRIVE										10+53.00										LEFT									
WEST PORT PLAZA DRIVE										10+66.71										RIGHT									
WEST PORT PLAZA DRIVE										20+31.76										RIGHT									
WEST PORT PLAZA DRIVE										26+20.24										RIGHT									
PROGRESS PARKWAY ENTRANCE										243+72.45										RIGHT									
WEST PORT PLAZA DRIVE										27+76.48										RIGHT									
WEST PORT PLAZA DRIVE										27+98.92										RIGHT									
WEST PORT PLAZA DRIVE										28+20.77										RIGHT									
WEST PORT PLAZA DRIVE										29+21.52										RIGHT									
WEST PORT PLAZA DRIVE										30+20.70										RIGHT									
WEST PORT PLAZA DRIVE										30+49.74										RIGHT									
FEE FEE ROAD ENTRANCE										222+50.95										LEFT									
FEE FEE ROAD ENTRANCE										222+05.04										LEFT									
SUBTOTAL:																				-43- 7									
NON-FEDERALLY FUNDED																													
LOCATION										STATION										SIDE									
PROGRESS PARKWAY ENTRANCE										243+49.33										RIGHT									
SUBTOTAL:																				-4- 0									
TOTAL:																				-44- 7									
201-20.23 TREE REMOVAL, OVER 15"																													
Includes stump removal 2" below grade.																													
CMAQ-9901(638)																													
LOCATION										STATION										SIDE									
WEST PORT PLAZA DRIVE										18+76.17										LEFT									
WEST PORT PLAZA DRIVE										26+41.20										RIGHT									
WEST PORT PLAZA DRIVE										26+65.47										RIGHT									
PROGRESS PARKWAY ENTRANCE										243+99.21										RIGHT									
WEST PORT PLAZA DRIVE										29+97.88										LEFT									
WESTLINE INDUSTRIAL DRIVE										111+68.59										LEFT									
WESTLINE INDUSTRIAL DRIVE										112+29.99										LEFT									
TOTAL:																				-6- 5									

**ITEMIZED BID
BID OPTION 1 OF 1**

**Addendum No. 1
Item No. 4**

**FEDERAL PROJECT NO. CMAQ-9901(638) & STP-9900(673)
COUNTY PROJECT NO. AR-1548/1673**

ITEM NO.	ITEM DESCRIPTION	UNIT	QUANTITY	UNIT PRICE	AMOUNT
ROADWAY ITEMS (AR-1673) - WEST PORT PLAZA DRIVE CMAQ 2-22-2022					
201-20.22	Tree Removal, 6"-15"	EACH	13 7		
201-20.23	Tree Removal, Over 15"	EACH	6 5		
202-20.10	Removal of Improvements	L.S.	1		
202-22.30	Removal of Rigid Pavement	S.Y.	1064		
203-10.00	Class "A" Excavation	C.Y.	3286		
203-10.30	Land Disturbance Permits	L.S.	1		
304-05.04	Type 5 Aggregate Base (4" Thick)	S.Y.	7434.9		
404-09.04	Superpave Asphaltic Concrete Mixture SP95 (PG70-22)D	TON	1400.3		
404-12.72	Superpave Asphaltic Concrete Mixture SP125 (PG 70-22)DLP	TON	1960.3		

ITEMIZED BID BID OPTION 1 OF 1

**Addendum No. 1
Item No. 4**

FEDERAL PROJECT NO. CMAQ-9901(638) & STP-9900(673)
COUNTY PROJECT NO. AR-1548/1673

ITEM NO.	ITEM DESCRIPTION	UNIT	QUANTITY	UNIT PRICE	AMOUNT
ROADWAY ITEMS (AR-1673) - W. PORT PLAZA DR. CTY FUNDED ITEMS 2-22-2022					
201-20-14	Tree Removal	INCH	1 0 (Zero)		
201-20-22	Tree Removal, 6" 15"	EACH	1 0 (Zero)		
202-20.10	Removal of Improvements	L.S.	1		
202-22.30	Removal of Rigid Pavement	S.Y.	158		
203-10.00	Class "A" Excavation	C.Y.	343.8		
304-05.04	Type 5 Aggregate Base (4" Thick)	S.Y.	692.8		
404-09.04	Superpave Asphaltic Concrete Mixture SP95 (PG70-22)D	TON	297.4		
404-12.72	Superpave Asphaltic Concrete Mixture SP125 (PG 70-22)DLP	TON	416.4		
405-30.10	Type "C" Bituminous Concrete (Pavement)	TON	596.8		