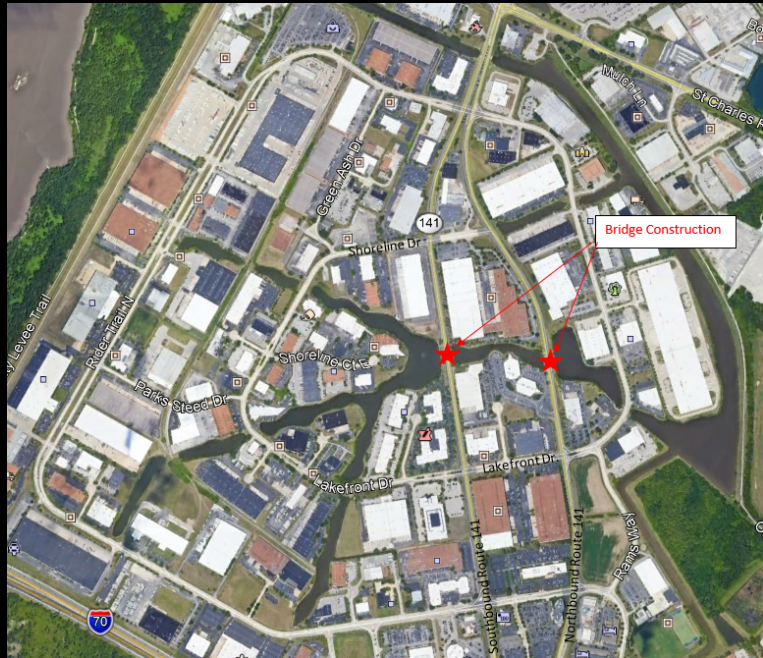


# Route 141 Bridge Replacements over Lakes in Earth City

Pre-Bid Meeting  
January 26, 2022  
2 p.m.



1

## Agenda

- Introductions
- Project Overview
- Job Special Provisions
- Schedule
- Contractor Questions and Answers

2

## Introductions

### MoDOT

- Niall Jansson, Resident Engineer
- Lisa Kuntz, Project Manager
- Dan Savageau, Design
- Tyler Murray, Design
- Anousone Arounpradith, Bridge

### Earth City Levee District

- Jerry Leigh

3

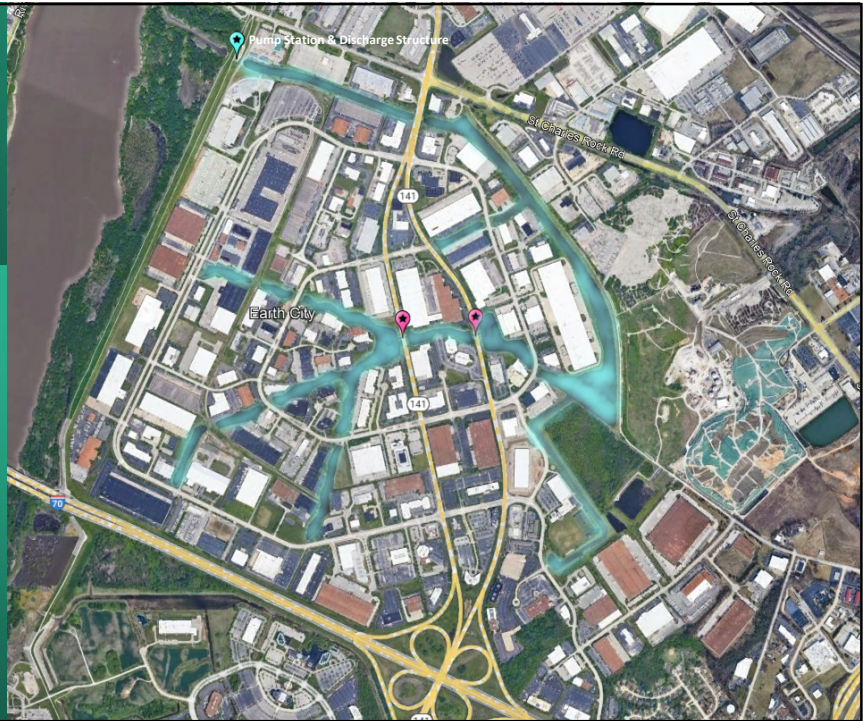


### Project Overview:

Replace the aging and narrow bridges on both Northbound & Southbound Route 141 in Earth City

4

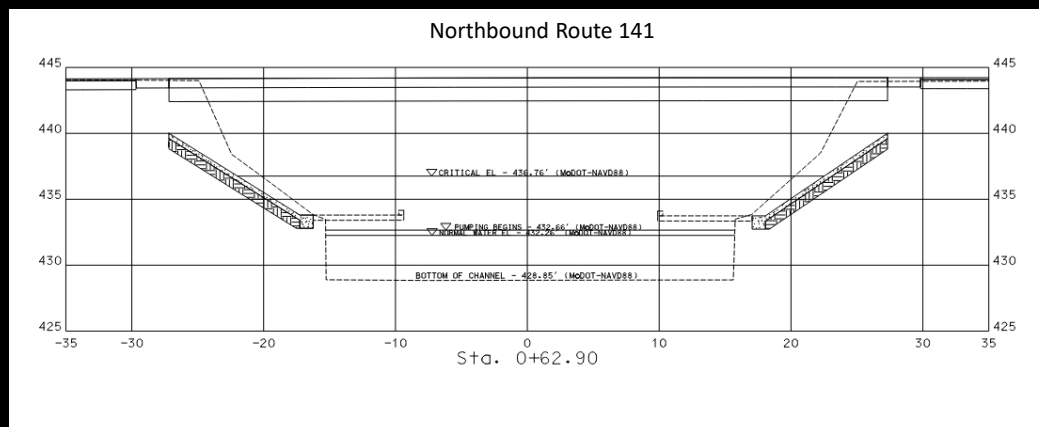
Existing bridges span over channels that connect a system of lakes, ditches, and channels that collectively make up the Earth City Levee District's Interior Storm Water Drainage System.



5

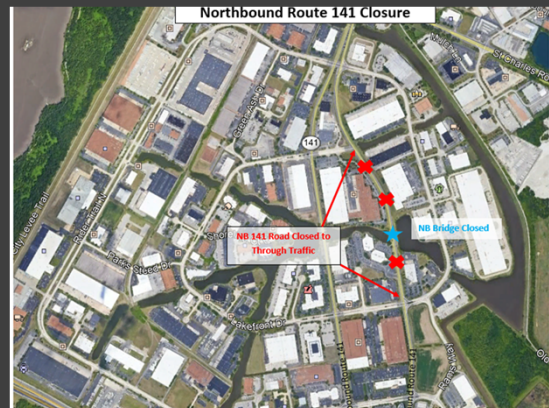
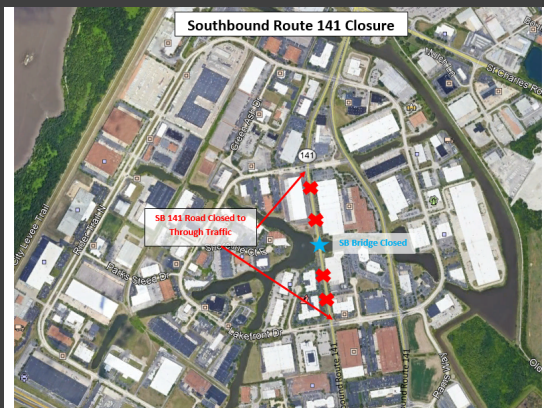
## Water Elevation Information

|                               | Elevation (Earth City Datum) | Elevation (NAVD88) | Missouri River Stage |
|-------------------------------|------------------------------|--------------------|----------------------|
| Normal Lake Level             | 433.5'                       | 432.26'            | 20.5'                |
| Levee District Pumping Begins | 433.9'                       | 432.66'            | 20.9'                |
| Flooding Occurs               | 438'                         | 436.76'            | 25.0'                |



6





### Job Special Provisions

JSP X - Liquidated Damages Specified (80-Day Demolition & Construction of SB Route 141)

JSP Y – Liquidated Damages Specified (80-Day Demolition & Construction of SB Route 141)

Allows the contractor to close a direction of Route 141 for a period of 80 calendar days to demo the existing structure & rebuild the new bridge.

7

### JSP R - Demolition Plan

- The contractor shall provide the engineer with the bridge demolition plan three weeks prior to beginning work.
- Demolition Plan must meet all requirements in the JSP.
- Work will not be allowed to commence until after the demolition plan has been approved.

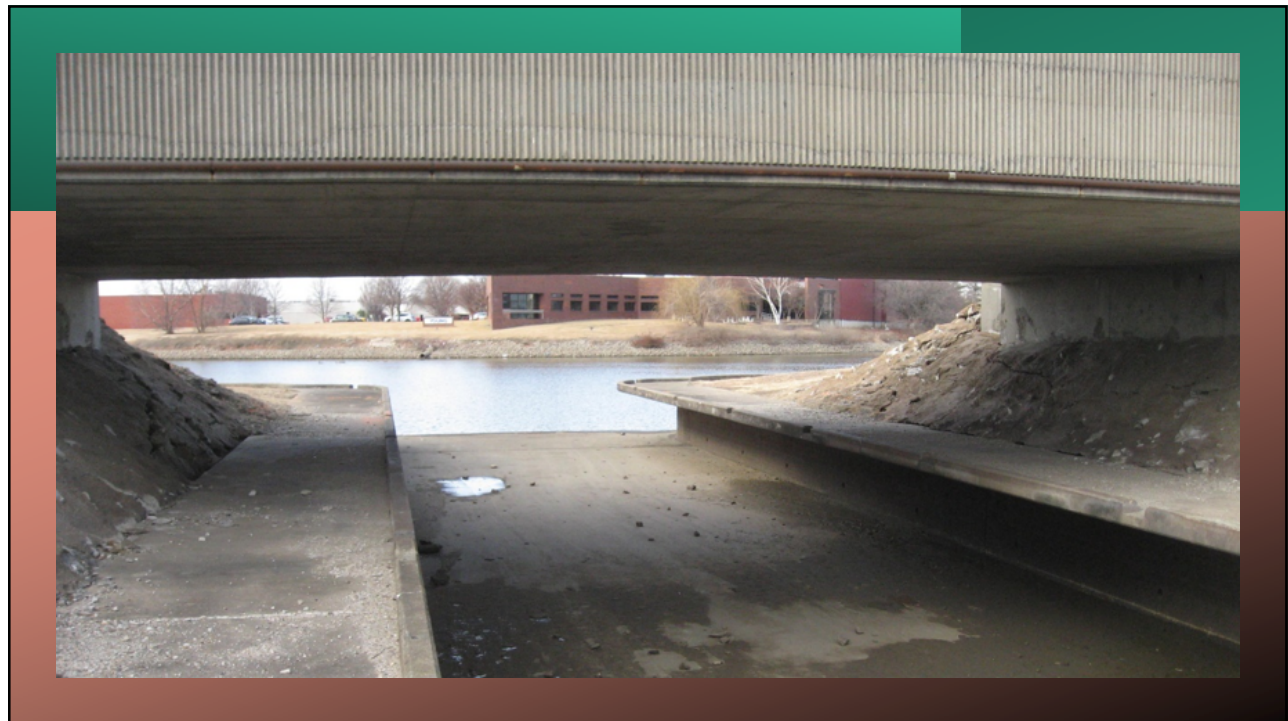
8



## JSP R - Demolition Plan Continued

- Notification requirements
- All sediment and debris must be contained during demolition and cannot enter the adjacent lakes.
- Concrete Channels below the existing bridges, including the overhangs, shall remain undamaged and intact during construction.
- Demolition plan must include contact information for three personnel to contract in case of an emergency that will be available 24/7 during the demolition.

9



10

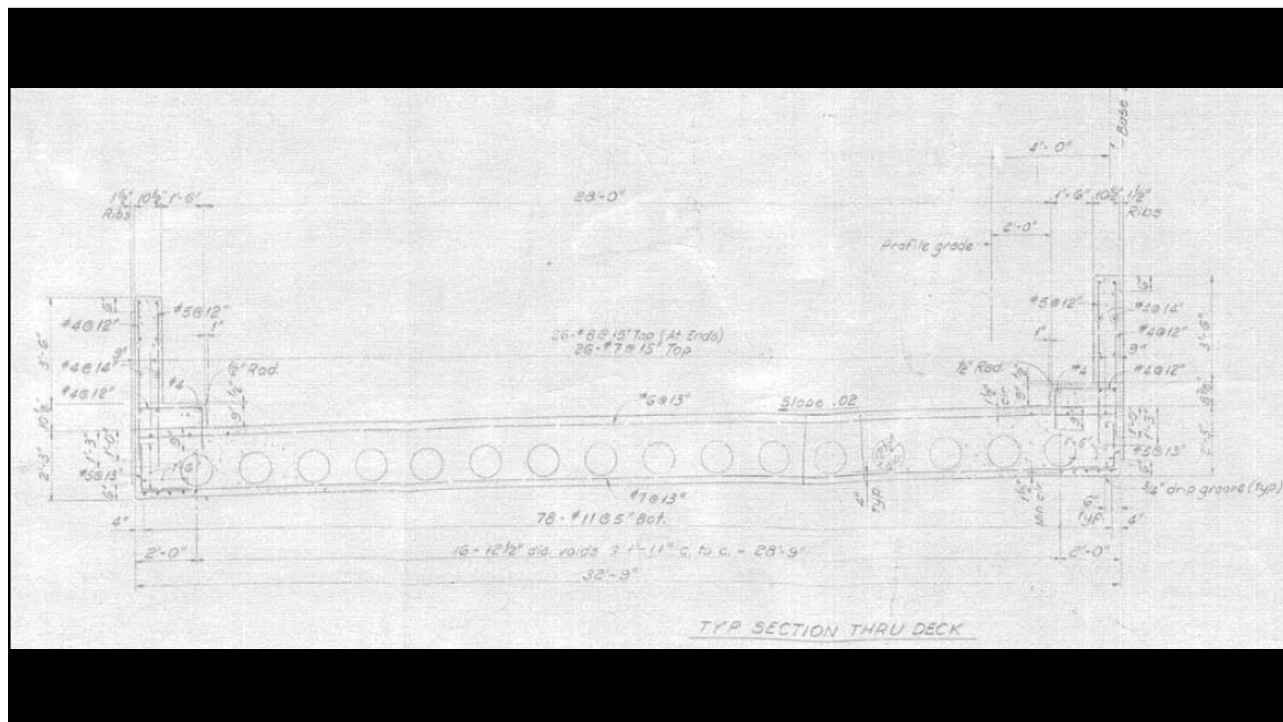


11

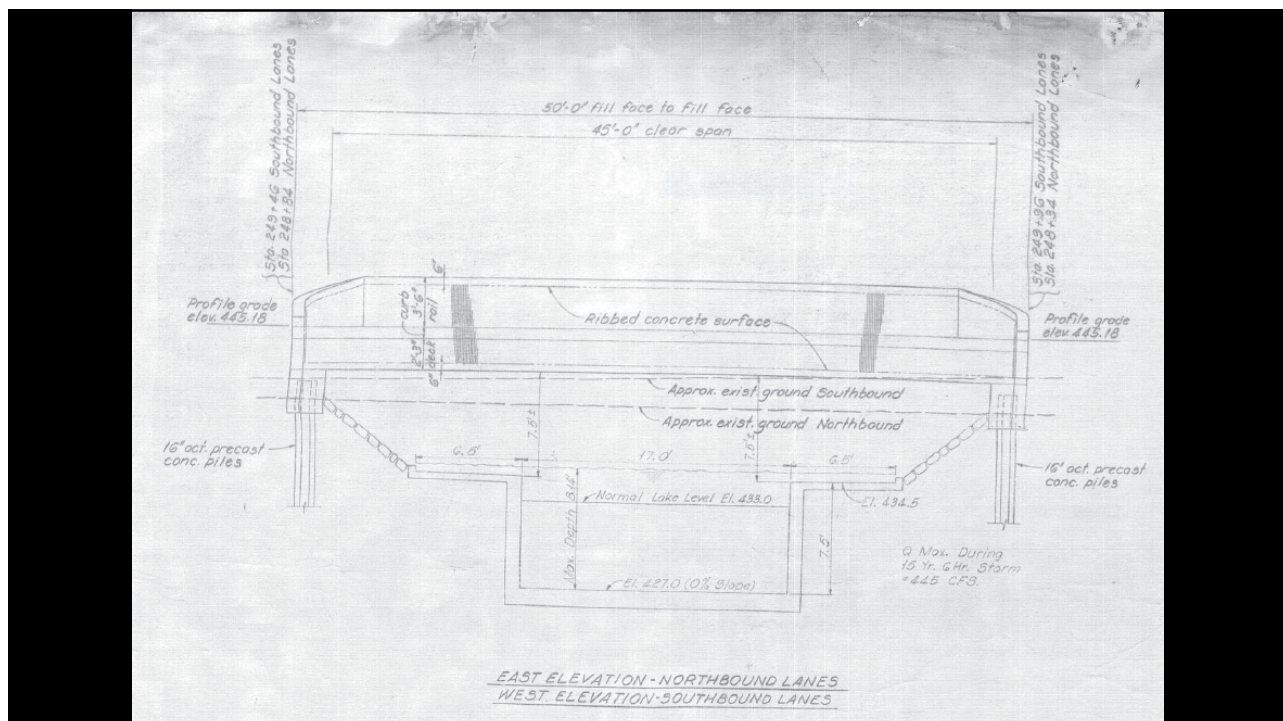


12





13



14



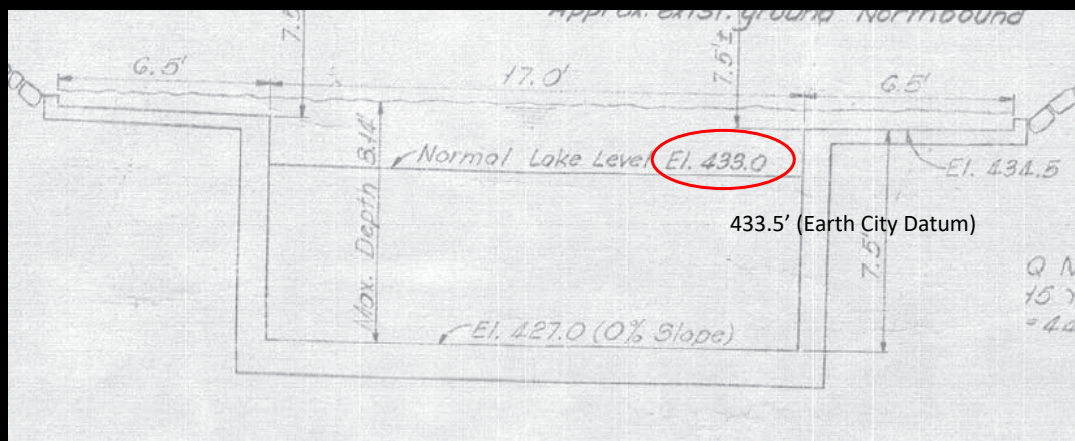
## JSP R - Demolition Plan Continued

IF the contractor's means and methods to demo the structure includes restricting the water flow through the channel, the follow requirements must be met:

- Pool Elevation in the lakes & channel must be 433.5' (Earth City Datum) or lower
- Contractor shall check the weather forecast for significant rain before demo. IF significant rain is expected, the contractor must delay the demolition.
- The contractor shall check the Missouri River gage station at river mile 27.2 (St Charles Gage). If the river is above or predicted to be above the flood stage of 25' (438' Earth City Datum), the contractor must delay the demolition.
- The contractor can only restrict the flow in the channel for no longer than three consecutive days to demo each structure.
- The contractor must provide an emergency plan to un-restrict the flow in the channel if an unexpected rain event occurs during the demolition that causes the elevation of the pools to rise more than a foot over the normal elevation of 433.5' (Earth City Datum)

15

## How 433.5' correlates to the channel depth



16



17

JSP V. Liquidated Damages Specified ( 3 Consecutive Day Restriction of Flow of the Route 141 Southbound Channel

JSP W. Liquidated Damages Specified ( 3 Consecutive Day Restriction of Flow of the Route 141 Northbound Channel

As specified in the Demolition Plan JSP, the contractor shall only be allowed three consecutive days to restrict flow in the channel for the demolition of the bridge.

18

### JSP T – Value Engineering Proposals for Replacing with Box Culvert

- Any proposal to value engineer the structure to a box culvert will not be accepted or considered.

19

### Project Schedule/Order of Work:

- At a minimum, the northbound structure must be completed by November 1, 2022
- The contractor shall have both directions with all lanes open between November 1, 2022 and March 1, 2023.
- Project Completion date is August 1, 2023

20



## Contractor Questions and Answers

21

# THANK YOU FOR ATTENDING



22