



ADDENDUM NUMBER ONE

DATE: January 4, 2022

OWNER: City of Union, Missouri
10 East Locust Street
Union, Missouri 63084

SUBJECT: Addendum Number One to
Denmark Road Phase 3 Bridge
Federal Project No. STP-6200(613)
Cochran Project No. SC17-672

This Addendum forms a part of the Bidding and Contract Documents and modifies the original Bidding Documents. **FAILURE TO ACKNOWLEDGE RECEIPT OF ADDENDUM MAY SUBJECT BIDDER TO DISQUALIFICATION.**

ITEM:

1. **CHANGE:** Union City Hall is located at **10 East Locust Street, Union, Missouri 63084**. All bids shall be delivered to City Hall to that address.
2. **CHANGE:** **High Performance Polypropylene Pipe** meeting Missouri Standard Specifications for Highway Construction is an acceptable alternative to Reinforced Concrete Pipe for all storm sewer work associated with this project.
3. **REPLACE:** Plan Sheets **B-1, B-7, B-8, B-11 and B-13** with the enclosed **REVISED Plan Sheets B-1, B-7, B-8, B-11 and B-13**.
4. **CHANGE:** In the Project Manual, on page JSP-23 of the Job Special Provisions under the "REVISIONS TO MoDOT STANDARD SPECIFICATIONS" paragraph, delete **SECTION 606.30 CRASHWORTHY END TERMINALS**.

The requirement of Section 606.30.2.2 of the Missouri Standard Specifications for Highway Construction shall remain in effect, Type A Crashworthy End Terminals shall be a minimum length of 50'.

5. **REPLACE:** In the Project Manual, the State and Federal Prevailing Wage Rates with the attached **updated State and Federal Prevailing Wage Rates**.
6. **CLARIFICATION:** For contractor informational use only. Attached are the AT&T relocation plans for work performed by AT&T forces. This work was performed after the design for this project was completed.

ATTACHMENTS: **REVISED PLAN SHEETS, B -1, B -7, B -8, B -11 and B-13**
UPDATED STATE WAGE RATES
UPDATED FEDERAL WAGE RATES
AT&T RELOCATION PLANS

END ADDENDUM NO. 1

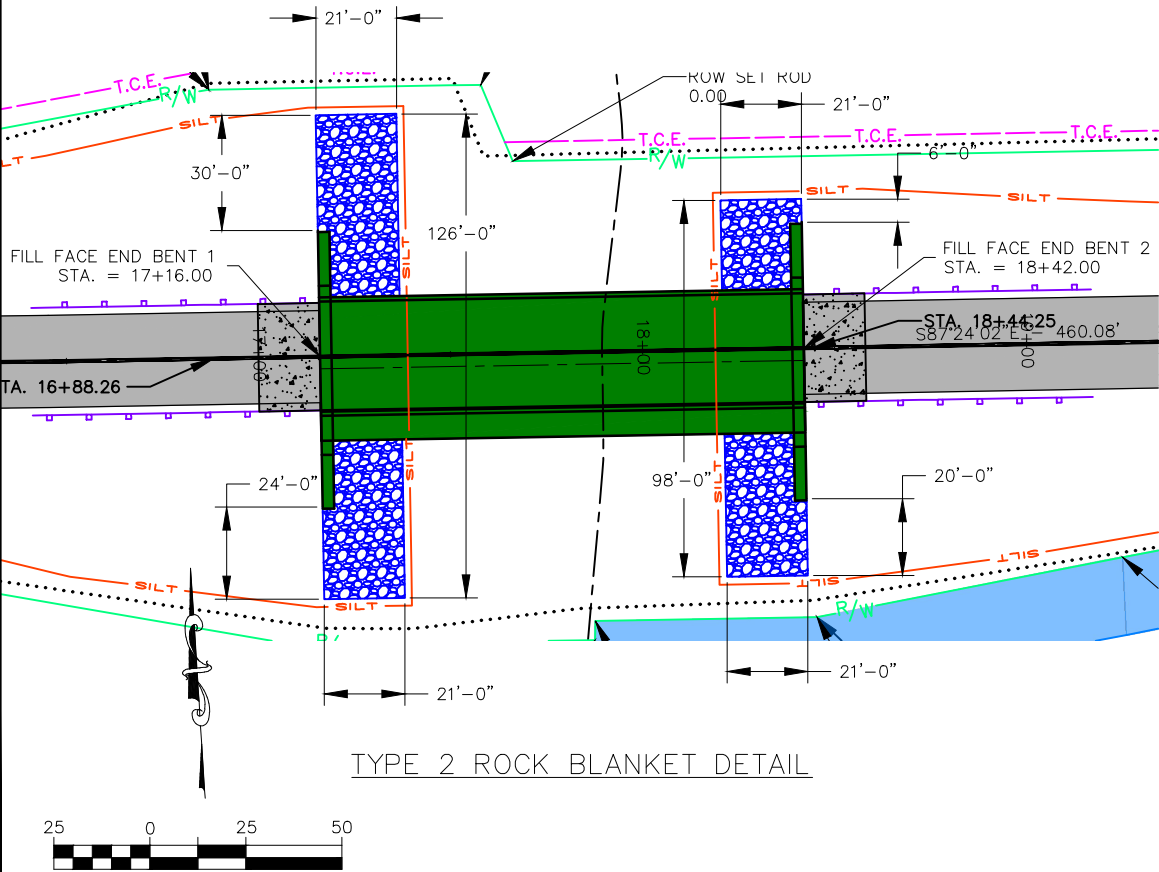
Drawing name: J:\SC17-672 Union - Denmark Rd. Phase 3 (Bridge)\AUTOCAD DRAWINGS\BRIDGE NOTES.dwg Tab: B-1 Plotted on: Jan 03, 2022 - 10:34am Plotted by: amuel

HYDRAULIC DATA	
DRAINAGE AREA	10.95 SQUARE MILES
BASIN SLOPE	30.2 FEET PER MILE
CHANNEL SLOPE IN THE VICINITY OF THE STRUCTURE	.0022 FEET PER FEET
DESIGN FREQUENCY	100 YEAR
DESIGN DISCHARGE	7683 CFS
DESIGN HIGH WATER ELEVATION AT THE STRUCTURE	503.15 FEET
MAXIMUM BACKWATER FOR DESIGN FREQUENCY	0 FEET
LOW ELEVATION OF STRUCTURE	504.19 FEET
100-YEAR DISCHARGE	7683 CFS
APPROACH ROADWAY OVERTOPPING FREQUENCY	100-YEAR

NOTE:
A PORTION OF THIS PROJECT AREA LIES WITHIN ZONE "AE" OF THE FLOOD HAZARD AREA SUBJECT TO THE 1% ANNUAL CHANCE FLOOD AS SHOWN ON THE FEMA MAP FOR FRANKLIN COUNTY, MISSOURI AND INCORPORATED AREAS, MAP NUMBER 29071C0320D.

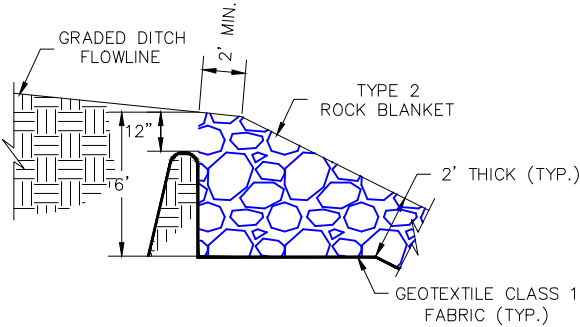
ESTIMATED QUANTITIES FOR SLAB ON CONCRETE NU GIRDER	
ITEM	TOTAL
CLASS B2 CONCRETE (SUPERSTRUCTURE), CY	196.2
REINFORCING STEEL, LBS	32,481
PRECAST PANELS, SY	172.2

NOTE: ALL SUPERSTRUCTURE CONCRETE, REINFORCING STEEL, AND PRESTRESSED PANELS ARE TO BE PAID FOR UNDER THE LINE ITEM "SLAB ON CONCRETE NU GIRDER."

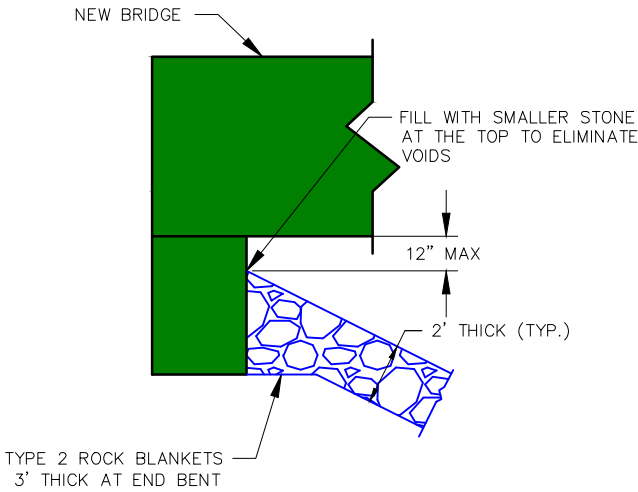


TYPE 2 ROCK BLANKET DETAIL

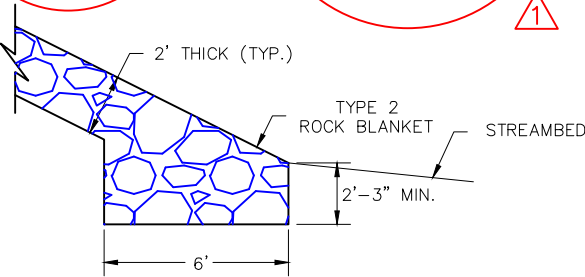
BRIDGE NOTES



TYPICAL SECTION AT INTERSECTION OF GRADED DITCH AND TYPE 2 ROCK BLANKET



TOP OF ROCK BLANKET AGAINST END BENTS



TYPICAL SECTION THROUGH LOWER END OF TYPE 2 ROCK BLANKET

NOTE: THIS DRAWING IS NOT TO SCALE. PLEASE FOLLOW DIMENSIONS.

PROPOSED STRUCTURE

SINGLE SPAN (123'-0")
PRESTRESSED CONCRETE NU53 GIRDERS
CURB-TO-CURB WIDTH = 28'-8"
OUT-TO-OUT WIDTH = 37'-4"
SKEW = 0°
GRADE = 0.00%

PROPOSED ROADWAY

ROADWAY WIDTH = 24'-0"
ROADBED WIDTH = 28'-0"
SHOULDER WIDTH = 2'-0"
NORMAL CROWN = 2.00%

GENERAL NOTES:

DESIGN SPECIFICATIONS:
2012 AASHTO LRFD BRIDGE DESIGN SPECIFICATIONS FOR HIGHWAY BRIDGES, 6TH EDITION WITH 2013 INTERIM REVISIONS
2002 AASHTO LFD (17TH ED.) STANDARD SPECIFICATIONS (SEISMIC DETAILS)
SEISMIC PERFORMANCE CATEGORY 'A'

CONSTRUCTION SPECIFICATIONS:
MATERIALS AND CONSTRUCTION PROCEDURES SHALL CONFORM TO THE MISSOURI STANDARD SPECIFICATIONS FOR HIGHWAY CONSTRUCTION 2018 AND CURRENT SUPPLEMENTAL SPECIFICATIONS AND REVISIONS, UNLESS MODIFIED BY THE PROJECT SPECIFICATIONS.

DESIGN LOADING:
HL-93 LOADING
FUTURE WEARING SURFACE 35 LBS./SQUARE FOOT
EARTH 120 LBS./CUBIC FOOT
EQUIVALENT FLUID PRESSURE= 60 LBS./CUBIC FT.

SUPERSTRUCTURE:
SIMPLY SUPPORTED AND NON-COMPOSITE FOR DEAD LOAD 1.
SIMPLY SUPPORTED AND COMPOSITE FOR DEAD LOAD 2 AND LIVE LOAD.

DESIGN UNIT STRESSES:
CLASS B CONCRETE (SUBSTRUCTURE) $f'_c = 3,000$ p.s.i.
CLASS B-2 CONCRETE (SUPERSTRUCTURE) $f'_c = 4,000$ p.s.i.
REINFORCING STEEL (GRADE 60) $f_y = 60,000$ p.s.i.
STRUCTURAL CARBON STEEL (ASTM A709 GRADE 36) $f_y = 36,000$ p.s.i.
STEEL PILE (ASTM A709 GRADE 36) $f_y = 36,000$ p.s.i.

ALL JOINT FILLER SHALL MEET THE REQUIREMENTS OF MISSOURI STANDARD SPECIFICATIONS FOR HIGHWAY CONSTRUCTION SECTION 1057.7.4.

MINIMUM CLEARANCE TO REINFORCING STEEL SHALL BE 2" UNLESS OTHERWISE SHOWN.

ALL BAR CHAIR SUPPORTS AND WIRE USED FOR TIEING THE REINFORCING STEEL SHALL BE EPOXY COATED OR PLASTIC COATED.

BEARINGS SHALL BE 60 DUROMETER NEOPRENE PADS.

ROADWAY FILL SHALL BE COMPLETED TO THE FINAL ROADWAY SECTION AND UP TO THE ELEVATION OF THE BOTTOM OF THE CONCRETE BEAM WITHIN THE LIMITS OF THE STRUCTURE AND FOR NOT LESS THAN 25 FEET IN BACK OF THE FILL FACE OF THE END BENTS BEFORE PILES ARE DRIVEN FOR ANY BENTS FALLING WITHIN THE EMBANKMENT SECTION.

MINIMUM ENERGY REQUIREMENT OF HAMMER IS BASED ON PLAN LENGTH AND DESIGN BEARING VALUE OF PILE.

THE PROJECT SHALL BE OPEN FOR INSPECTIONS OF THE WORK BY REPRESENTATIVES OF MODOT AND FHWA. THE CONTRACTOR SHALL GRANT ACCESS TO ALL PORTIONS OF THE WORK.



314-842-4033 (tel.)
314-842-5987 (fax)
www.cochrans.com

737 RUDDER ROAD
FENTON, MISSOURI 63026

COCHRAN
Civil Engineering
Land Surveying
Architecture
Site Development
Master Planning
General Consulting

ENGINEERING CERTIFICATE OF AUTHORITY NUMBER - 200706837
LAND SURVEYING CERTIFICATE OF AUTHORITY NUMBER - 260704299

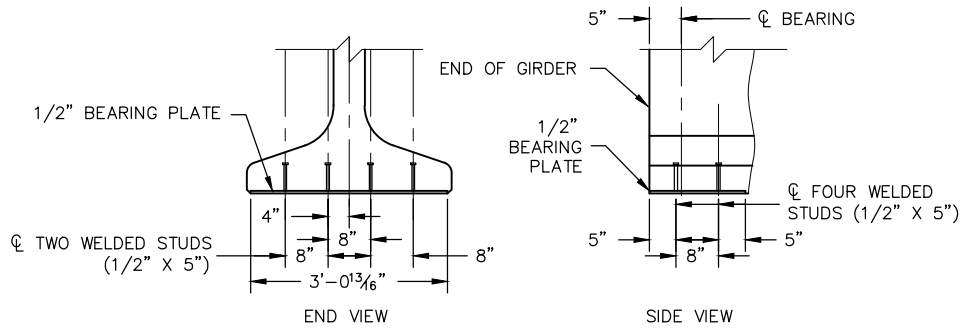
Three working days prior to the start of any excavation shall call 1-800-DIG-RIPE for utility location information.

All OSHA rules & regulations established for the type of construction required by these plans shall be followed (e.g. Trenching, Blasting, etc.)

DENMARK RD. BRIDGE OVER BIRCH CREEK
REPLACING LOW WATER CROSSING
FEDERAL PROJECT NO. STP-6200(613)
CITY OF UNION, MO

BRIDGE NOTES	
DATE: 1/4/22	REVISION: ADDENDUM #1
DWN. BY: A.J.M.	APPD. BY: B.B.D.
DATE: AUGUST 2019	
SCALE: NOT TO SCALE	
PROJ. NO: SC17-672	
DWG. NO: B-1	

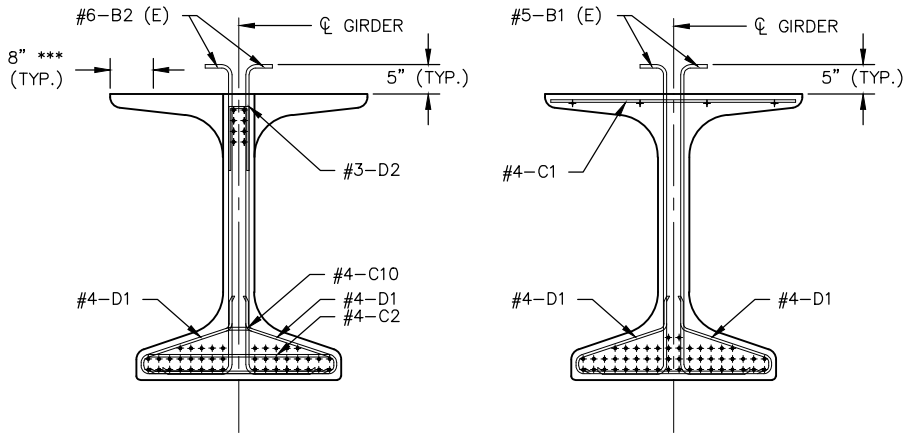
PRESTRESSED CONCRETE GIRDER DETAILS



BEARING PLATE DETAILS
NO SCALE

GALVANIZE THE 1/2" BEARING PLATE (ASTM A709 GRADE 36) IN ACCORDANCE WITH ASTM A123.

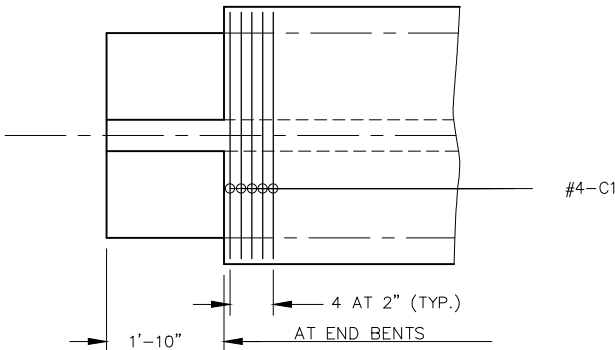
COST OF FURNISHING, GALVANIZING, AND INSTALLING THE 1/2" BEARING PLATE (ASTM A709 GRADE 36) AND WELDED STUDS IN THE PRESTRESSED GIRDER WILL BE CONSIDERED COMPLETELY COVERED BY THE CONTRACT UNIT PRICE FOR PRESTRESSED CONCRETE NU-GIRDER.



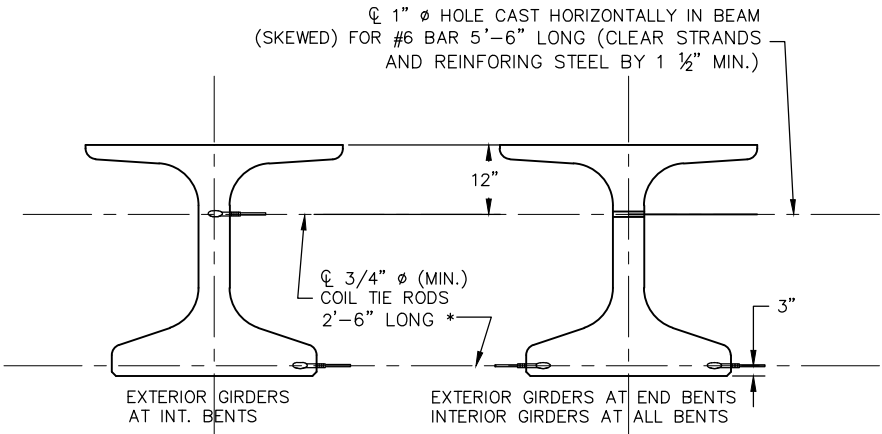
SECTION A-A
NO SCALE

SECTION B-B
NO SCALE

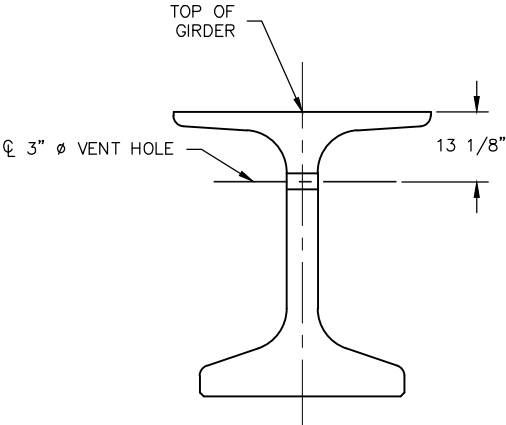
GIRDER REINFORCEMENT
NO SCALE



TOP FLANGE BLOCK OUT DETAIL
NO SCALE

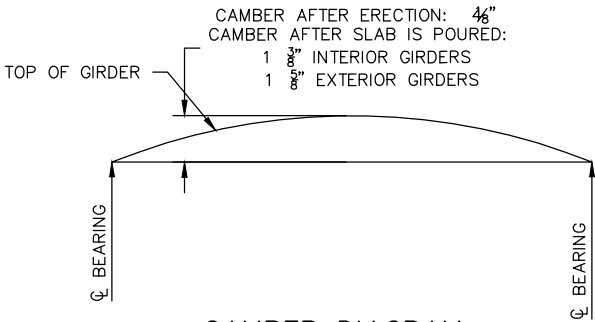


DETAIL OF COIL TIES
NO SCALE



PART SECTION NEAR VENT HOLE
NO SCALE

PLACE VENT HOLES AT OR NEAR UPGRADE 1/3 POINT OF GIRDERS AND CLEAR REINFORCING STEEL OR STRANDS BY 1 1/2" MINIMUM AND STEEL INTERMEDIATE DIAPHRAGM BOLT CONNECTIONS BY 6" MINIMUM.



CAMBER DIAGRAM
NO SCALE

FORM THE SLAB WITH A MINIMUM UNIFORM SLAB THICKNESS OF 9 1/2" ABOVE THE TOP FLANGE OF THE GIRDER WITH THE MOST CAMBER. (MINIMUM SLAB THICKNESS SHALL BE 8 1/2")

MISCELLANEOUS NOTES:

COST OF 3/4" Ø COIL TIE RODS PLACED IN DIAPHRAGMS WILL BE CONSIDERED COMPLETELY COVERED BY THE CONTRACT UNIT PRICE FOR PRESTRESSED CONCRETE GIRDER.

COIL TIES SHALL BE HELD IN PLACE IN THE FORMS BY SLOTTED WIRE-SETTING-STUDS PROJECTING THROUGH FORMS. STUDS ARE TO BE LEFT IN PLACE OR REPLACED WITH TEMPORARY PLUGS UNTIL GIRDERS ARE ERECTED, THEN REPLACED BY COIL TIE RODS.

THE CONTRACTOR MUST PROVIDE ANY TEMPORARY INTERMEDIATE DIAPHRAGMS AND/OR BRACING NECESSARY TO PROVIDE LATERAL AND TORSIONAL STABILITY FOR THE GIRDERS DURING CONSTRUCTION OF THE CONCRETE SLAB. THE TEMPORARY INTERMEDIATE DIAPHRAGMS/BRACING SHALL BE REMOVED AFTER THE CONCRETE SLAB HAS ATTAINED 75% OF ITS DESIGN STRENGTH. THE COST FOR FURNISHING, INSTALLING, AND REMOVING THE TEMPORARY INTERMEDIATE DIAPHRAGMS AND/OR BRACING SHALL BE CONSIDERED COMPLETELY COVERED BY THE CONTRACT UNIT PRICE FOR THE PRESTRESSED CONCRETE GIRDER.

LOCATION OF COIL TIES AND 5'-6" #6 BARS SHALL BE 4" FROM STREAM FACE OF DIAPHRAGM.

ALL HOLES SHALL BE CAST IN GIRDER. DRILLING IS NOT ALLOWED.

* LENGTH OF COIL TIE RODS AT EXTERIOR GIRDER AT END BENTS = 2'-6". OMIT COIL TIE RODS AT EXTERIOR SIDE OF EXTERIOR GIRDER ON THE DOWNSTREAM SIDE.

*** GIRDER TOP FLANGE SHALL BE STEEL TROWELED TO A SMOOTH FINISH FOR 8" AT THE EDGES, AS SHOWN. BOND BREAKER SHALL BE APPLIED TO THIS REGION ONLY. THE CENTER PORTION SHALL BE ROUGH FINISHED BY SCARIFYING THE SURFACE TRANSVERSELY WITH A WIRE BRUSH, AND NO LAITANCE SHALL REMAIN ON THE SURFACE.

REINFORCING NOTES:

REINFORCING STEEL SHALL CONFORM TO THE REQUIREMENTS OF AASHTO M 31, GRADE 60.

HOOKS AND BENDS SHALL BE IN ACCORDANCE WITH THE CRSI MANUAL OF STANDARD PRACTICE FOR DETAILING REINFORCED CONCRETE STRUCTURES, STIRRUP AND TIE DIMENSIONS.

MINIMUM CLEARANCE TO REINFORCING SHALL BE 1", UNLESS OTHERWISE SHOWN.

ALL DIMENSIONS ARE OUT TO OUT. ACTUAL LENGTHS ARE MEASURED ALONG CENTERLINE OF BAR TO THE NEAREST INCH.

THE TWO D1 BARS MAY BE FURNISHED AS ONE BAR AT THE FABRICATOR'S OPTION.

ALL BARS SHALL BE EPOXY COATED.



314-842-4033 (tel.)
314-842-5957 (fax)
www.cochraneng.com

COCHRAN

Civil Engineering
Land Surveying
Architecture
Site Development
Master Planning
General Consulting

737 RUDDER ROAD
FENTON, MISSOURI 63026

Three working days prior to the start of any excavation shall call 1-800-DIG-RITE for utility location information.
All OSHA rules & regulations established for the type of construction required by these plans shall be followed.
(e.g. Trenching, Blasting, etc)

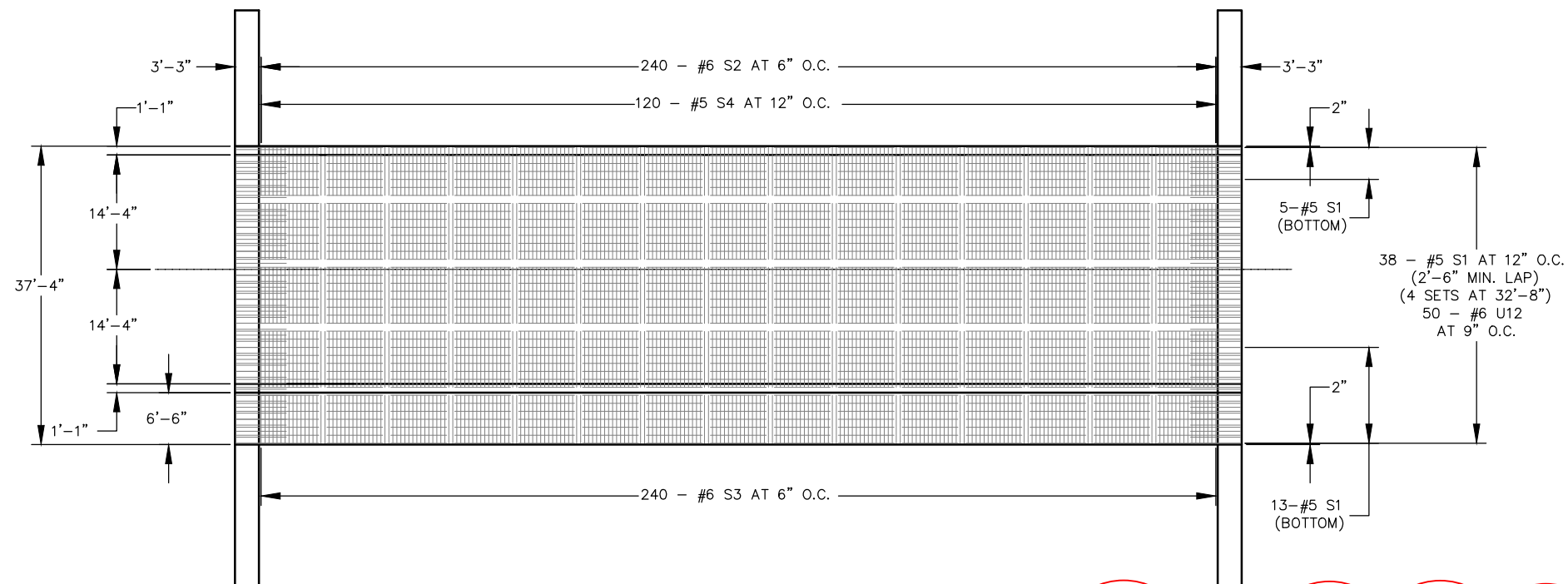
DENMARK RD. BRIDGE OVER BIRCH CREEK
REPLACING LOW WATER CROSSING
FEDERAL PROJECT NO. STP-6200(613)
CITY OF UNION, MO

PRESTRESSED CONCRETE GIRDER DETAILS

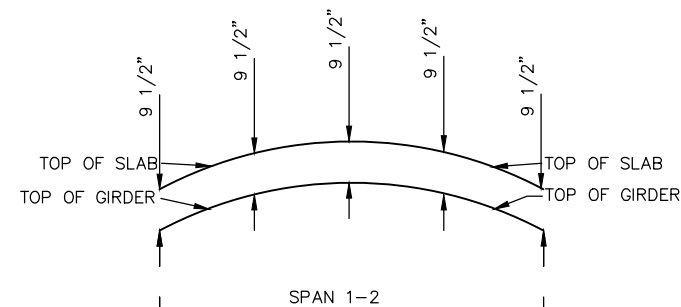
DATE:	1/4/22	ADDENDUM #1	DATE:	
DWN. BY:	A.J.M.		APPD. BY:	B.B.D.
DATE:	AUGUST 2019		SCALE:	NOT TO SCALE
PROJ. NO:	SC17-672		DWG. NO:	B-8

Drawing name: I:\SC17-672 Union - Denmark Rd. Phase 3 (Bridge)\AUTOCAD DRAWINGS\SLAB.dwg Tab: B-11 Plotted on: Jan 03, 2022 - 10:40am Plotted by: amudler

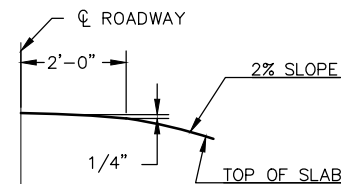
SLAB REINFORCEMENT



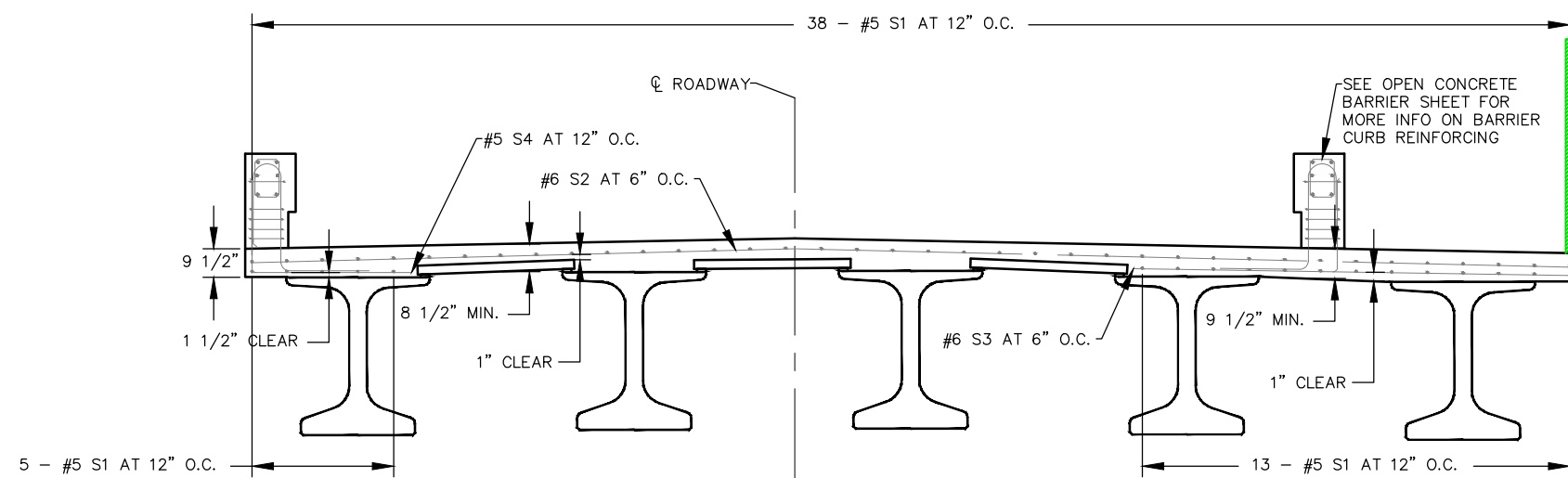
PLAN OF SLAB REINFORCEMENT



SLAB HAUNCH DIAGRAM



PARABOLIC CROWN



SECTION NEAR MIDSPAN

NOTES:

1. THE SLAB SHALL BE POURED WITH A MINIMUM SLAB THICKNESS OF 9 1/2" ABOVE THE GIRDERS. IF GIRDER CAMBER IS DIFFERENT FROM THAT SHOWN IN THE CAMBER DIAGRAM, IT SHALL BE NECESSARY TO ADJUST THE SLAB HAUNCHES, OR TO INCREASE THE SLAB THICKNESS. NO PAYMENT WILL BE MADE FOR ADDITIONAL LABOR OR MATERIALS REQUIRED FOR VARIATION IN HAUNCHING, SLAB THICKNESS OR GRADE ADJUSTMENT.
2. THE CONTRACTOR SHALL FURNISH AN APPROVED RETARDER TO RETARD THE SET OF CONCRETE TO 2.5 HOURS. THE RATE OF POUR MAY BE REDUCED TO NOT LESS THAN 25 CUBIC YARDS PER HOUR.
3. MACHINE FINISHING OF THE RIDING SURFACE WILL BE REQUIRED.
4. THE DIAPHRAGMS OF THE END BENTS SHALL BE POURED A MINIMUM OF 30 MINUTES AND A MAXIMUM OF 2 HOURS BEFORE THE SLAB IS POURED ACROSS THE DIAPHRAGM.
5. ALL SUPPORTS, BAR CHAIRS, AND WIRE USED FOR TYING THE REINFORCING STEEL SHALL BE EPOXY COATED OR PLASTIC COATED.
6. THE CONCRETE SHALL BE CURED AND SEALED ACCORDING TO THE REQUIREMENTS OF MISSOURI STANDARD SPECIFICATIONS 703.3.6 AND 703.3.8 RESPECTIVELY. THIS WORK SHALL BE INCLUDED IN THE UNIT BID PRICE FOR "SLAB ON CONCRETE NU GIRDER". THE CONCRETE SEALER SHALL BE APPLIED DIRECTLY TO THE EXTERIOR FACE OF THE PRESTRESSED GIRDERS, THE BOTTOM AND EDGE OF SLAB OVERHANG AND ALL EXPOSED SURFACES OF THE CONCRETE CURB.
7. SLAB CONCRETE SHALL BE CLASS B2. ALL CONCRETE, PRESTRESSED PANELS, AND REINFORCING STEEL ABOVE THE CONSTRUCTION JOINT SHALL BE PAID FOR UNDER THE LINE ITEM "SLAB ON CONCRETE NU GIRDER."
8. REFLECTIVE DELINEATORS SHALL BE INSTALLED ON THE TOP OF THE CONCRETE BARRIER CURBS NO MORE THAN 50' APART.
9. SEE BRIDGE APPROACH SLAB SHEET FOR PLACEMENT OF D9 BARS IN SLAB.
10. STAY-IN-PLACE METAL FORMS WILL NOT BE PERMITTED.

NOTE: THIS DRAWING IS NOT TO SCALE. PLEASE FOLLOW DIMENSIONS.

314-842-4033 (tel.)
314-842-5957 (fax)
www.cochraneng.com

COCHRAN

Civil Engineering
Land Surveying
Architecture
Site Development
Master Planning
General Consulting

737 RUDDER ROAD
FENTON, MISSOURI 63026

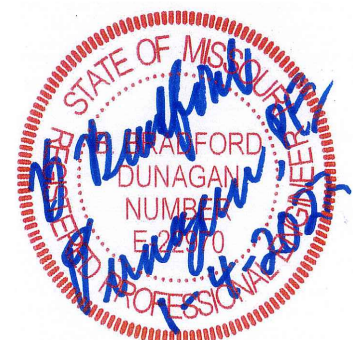
CERTIFICATE OF AUTHORITY NUMBER - 006937

Three working days prior to the start of any excavation on this site, contractor shall submit a JIG-RITE for utility location information.

All OSHA rules & regulations shall be strictly followed (ie. trenching, blasting, etc.)

DENMARK RD. BRIDGE OVER BIRCH CREEK
REPLACING LOW WATER CROSSING
FEDERAL PROJECT NO. STP-6200(613)
CITY OF UNION, MO

SLAB REINFORCEMENT	DATE: 1/4/22	REVISION: 1	DWN. BY: A.J.M.	APPD. BY: B.B.D.
SCALE: NOT TO SCALE	DATE: AUGUST 2019	PROJ. NO: SC17-672	DWG. NO: B-11	



Drawing name: J:\SC17-672 Union - Denmark Rd. Phase 3 (Bridge)\AUTOCAD DRAWINGS\BRIDGE APPROACH SLAB.dwg Tab: B-13 Plotted on: Jan 03, 2022 - 10:35am Plotted by: amuelier



D1, D2, D4, D6, D9

13 1/2"

2'-9"

D7

<div style="writing-mode: vertical-rl; transform: rotate(180deg);"> BRIDGE APPROACH SLAB </div>	RETURN:		DWN. BY:		APPD. BY:	
	DATE:		DWN. BY:		APPD. BY:	
	1/4/22		A.J.M.		B.B.D.	
	SCALE:		DATE:		AUGUST 2019	
	TO SCALE		SCALE:		TO SCALE	
	PROJ. NO:		DWG. NO:		SC17-672	
	B-13		ADDENDUM #1			

Updated State Prevailing Wage Section

Addendum 1

Missouri

Division of Labor Standards

WAGE AND HOUR SECTION



MICHAEL L. PARSON, Governor

Annual Wage Order No. 28

Section 036
FRANKLIN COUNTY

In accordance with Section 290.262 RSMo 2000, within thirty (30) days after a certified copy of this Annual Wage Order has been filed with the Secretary of State as indicated below, any person who may be affected by this Annual Wage Order may object by filing an objection in triplicate with the Labor and Industrial Relations Commission, P.O. Box 599, Jefferson City, MO 65102-0599. Such objections must set forth in writing the specific grounds of objection. Each objection shall certify that a copy has been furnished to the Division of Labor Standards, P.O. Box 449, Jefferson City, MO 65102-0449 pursuant to 8 CSR 20-5.010(1). A certified copy of the Annual Wage Order has been filed with the Secretary of State of Missouri.

Original Signed by

Taylor Burks, Director
Division of Labor Standards

Filed With Secretary of State: March 10, 2021

Last Date Objections May Be Filed: April 8, 2021

Prepared by Missouri Department of Labor and Industrial Relations

OCCUPATIONAL TITLE	**Prevailing Hourly Rate
Asbestos Worker	\$63.00
Boilermaker	*\$25.66
Bricklayer	\$45.18
Carpenter	\$55.97
Lather	
Linoleum Layer	
Millwright	
Pile Driver	
Cement Mason	\$53.77
Plasterer	
Communications Technician	*\$25.66
Electrician (Inside Wireman)	\$67.72
Electrician Outside Lineman	\$66.25
Lineman Operator	
Lineman - Tree Trimmer	
Groundman	
Groundman - Tree Trimmer	
Elevator Constructor	*\$25.66
Glazier	*\$25.66
Ironworker	\$63.62
Laborer	\$45.46
General Laborer	
First Semi-Skilled	
Second Semi-Skilled	
Mason	*\$25.66
Marble Mason	
Marble Finisher	
Terrazzo Worker	
Terrazzo Finisher	
Tile Setter	
Tile Finisher	
Operating Engineer	\$63.59
Group I	
Group II	
Group III	
Group III-A	
Group IV	
Group V	
Painter	\$48.86
Plumber	\$72.03
Pipe Fitter	
Roofer	\$52.92
Sheet Metal Worker	\$69.15
Sprinkler Fitter	\$62.13
Truck Driver	*\$25.66
Truck Control Service Driver	
Group I	
Group II	
Group III	
Group IV	

*The Division of Labor Standards received less than 1,000 reportable hours for this occupational title.
Public works contracting minimum wage is established for this occupational title using data provided by Missouri
Economic Research and Information Center.

**The Prevailing Hourly Rate includes any applicable fringe benefit amounts for each occupational title.

Heavy Construction Rates for
FRANKLIN County

Section 036

OCCUPATIONAL TITLE	**Prevailing Hourly Rate
Carpenter	\$54.59
Millwright	
Pile Driver	
Electrician (Outside Lineman)	\$66.25
Lineman Operator	
Lineman - Tree Trimmer	
Groundman	
Groundman - Tree Trimmer	
Laborer	\$47.97
General Laborer	
Skilled Laborer	
Operating Engineer	\$64.34
Group I	
Group II	
Group III	
Group IV	
Truck Driver	\$42.49
Truck Control Service Driver	
Group I	
Group II	
Group III	
Group IV	

Use Heavy Construction Rates on Highway and Heavy construction in accordance with the classifications of construction work established in 8 CSR 30-3.040(3).

Use Building Construction Rates on Building construction in accordance with the classifications of construction work established in 8 CSR 30-3.040(2).

If a worker is performing work on a heavy construction project within an occupational title that is not listed on the Heavy Construction Rate Sheet, use the rate for that occupational title as shown on the Building Construction Rate Sheet.

*The Division of Labor Standards received less than 1,000 reportable hours for this occupational title. Public works contracting minimum wage is established for this occupational title using data provided by Missouri Economic Research and Information Center.

**The Prevailing Hourly Rate includes any applicable fringe benefit amounts for each occupational title.

OVERTIME and HOLIDAYS

OVERTIME

For all work performed on a Sunday or a holiday, not less than twice (2x) the prevailing hourly rate of wages for work of a similar character in the locality in which the work is performed or the public works contracting minimum wage, whichever is applicable, shall be paid to all workers employed by or on behalf of any public body engaged in the construction of public works, exclusive of maintenance work.

For all overtime work performed, not less than one and one-half (1½) the prevailing hourly rate of wages for work of a similar character in the locality in which the work is performed or the public works contracting minimum wage, whichever is applicable, shall be paid to all workers employed by or on behalf of any public body engaged in the construction of public works, exclusive of maintenance work or contractual obligation. For purposes of this subdivision, **"overtime work"** shall include work that exceeds ten hours in one day and work in excess of forty hours in one calendar week; and

A thirty-minute lunch period on each calendar day shall be allowed for each worker on a public works project, provided that such time shall not be considered as time worked.

HOLIDAYS

January first;
The last Monday in May;
July fourth;
The first Monday in September;
November eleventh;
The fourth Thursday in November; and
December twenty-fifth;

If any holiday falls on a Sunday, the following Monday shall be considered a holiday.

Updated Federal Prevailing Wage Section

Addendum 1

"General Decision Number: MO20210001 12/17/2021

Superseded General Decision Number: MO20200001

State: Missouri

Construction Types: Heavy and Highway

Counties: Missouri Statewide.

HEAVY AND HIGHWAY CONSTRUCTION PROJECTS

Note: Under Executive Order (EO) 13658, an hourly minimum wage of \$10.95 for calendar year 2021 applies to all contracts subject to the Davis-Bacon Act for which the contract is awarded (and any solicitation was issued) on or after January 1, 2015. If this contract is covered by the EO, the contractor must pay all workers in any classification listed on this wage determination at least \$10.95 per hour (or the applicable wage rate listed on this wage determination, if it is higher) for all hours spent performing on the contract in calendar year 2021. If this contract is covered by the EO and a classification considered necessary for performance of work on the contract does not appear on this wage determination, the contractor must pay workers in that classification at least the wage rate determined through the conformance process set forth in 29 CFR 5.5(a)(1)(ii) (or the EO minimum wage rate, if it is higher than the conformed wage rate). The EO minimum wage rate will be adjusted annually. Please note that this EO applies to the above-mentioned types of contracts entered into by the federal government that are subject to the Davis-Bacon Act itself, but it does not apply to contracts subject only to the Davis-Bacon Related Acts, including those set forth at 29 CFR 5.1(a)(2)-(60). Additional information on contractor requirements and worker protections under the EO is available at www.dol.gov/whd/govcontracts.

Modification Number	Publication Date
0	01/01/2021
1	02/05/2021
2	02/12/2021
3	04/09/2021
4	04/23/2021
5	05/21/2021
6	05/28/2021
7	06/25/2021
8	07/09/2021
9	07/23/2021
10	08/20/2021
11	09/03/2021
12	09/24/2021
13	10/01/2021
14	11/05/2021
15	12/17/2021

CARP0002-002 05/01/2021

ST. LOUIS COUNTY AND CITY

	Rates	Fringes
Carpenters.....	\$ 39.72	18.90

* CARP0005-006 05/01/2021

CASS (Richards-Gebauer AFB ONLY), CLAY, JACKSON, PLATTE AND RAY
COUNTIES

	Rates	Fringes
Carpenters:		
CARPENTERS & LATHERS.....	\$ 41.37	18.90
MILLWRIGHTS & PILEDRIVERS...	\$ 41.37	18.90

CARP0011-001 05/01/2021

	Rates	Fringes
Carpenter and Piledriver		
ADAIR, AUDRAIN (West of Hwy 19), BOONE, CALLAWAY, CHARITON, COLE, COOPER, HOWARD, KNOX, LINN, MACON, MILLER, MONITEAU, MONROE, OSAGE, PUTNAM, RANDOLPH, SCHUYLER, SHELBY AND SULLIVAN COUNTIES.....	\$ 33.69	18.90
ATCHISON, ANDREW, BATES, CALDWELL, CARROLL, DAVIESS, DEKALB, GENTRY, GRUNDY, HARRISON, HENRY, HOLT, LIVINGSTON, MERCER, NODAWAY, ST. CLAIR, SALINE AND WORTH COUNTIES.....	\$ 32.10	18.90
AUDRAIN (East of Hwy.19), RALLS, MARION, LEWIS, CLARK AND SCOTLAND COUNTIES.	\$ 33.70	18.90
BARRY, BARTON, CAMDEN, CEDAR, CHRISTIAN, DADE, DALLAS, DOUGLAS, GREENE, HICKORY, JASPER, LACLEDE, LAWRENCE, MCDONALD, NEWTON, OZARK, POLK, STONE, TANEY, VERNON, WEBSTER AND WRIGHT COUNTIES.	\$ 31.68	18.90
BENTON, MORGAN AND PETTIS...	\$ 32.15	18.90
BOLLINGER, BUTLER, CAPE GIRARDEAU, DUNKLIN, MISSISSIPPI, NEW MADRID, PEMISCOT, PERRY, STE. GENEVIEVE, SCOTT, STODDARD AND WAYNE COUNTIES.....	\$ 33.54	18.90
BUCHANAN, CLINTON, JOHNSON AND LAFAYETTE COUNTIES.....	\$ 32.85	18.90
CARTER, HOWELL, OREGON AND RIPLEY COUNTIES.....	\$ 32.43	18.90
CRAWFORD, DENT, GASCONADE, IRON, MADISON, MARIES, MONTGOMERY, PHELPS, PULASKI, REYNOLDS, SHANNON AND TEXAS COUNTIES.....	\$ 33.53	18.90
FRANKLIN COUNTY.....	\$ 37.14	18.90
JEFFERSON AND ST. CHARLES COUNTIES.....	\$ 39.72	18.90
LINCOLN COUNTY.....	\$ 35.50	18.90
PIKE, ST. FRANCOIS AND WASHINGTON COUNTIES.....	\$ 34.36	18.90

WARREN COUNTY.....\$ 35.96 18.90

ELEC0001-002 05/31/2020

BOLLINGER, BUTLER, CAPE GIRARDEAU, CARTER, DUNKLIN, FRANKLIN,
IRON, JEFFERSON, LINCOLN, MADISON, MISSISSIPPI, NEW MADRID,
PEMISCOT, PERRY, REYNOLDS, RIPLEY, ST. CHARLES, ST. FRANCOIS,
ST. LOUIS (City and County), STE. GENEVIEVE, SCOTT, STODDARD,
WARREN, WASHINGTON AND WAYNE COUNTIES

Rates Fringes

Electricians.....\$ 40.61 27.06

ELEC0002-001 08/29/2021

ADAIR, AUDRAIN, BOONE, CALLAWAY, CAMDEN, CARTER, CHARITON,
CLARK, COLE, COOPER, CRAWFORD, DENT, FRANKLIN, GASCONADE,
HOWARD, HOWELL, IRON, JEFFERSON, KNOX, LEWIS, LINCON, LINN,
MACON, MARIES, MARION, MILLER, MONITEAU, MONROE, MONTGOMERY,
MORGAN, OREGON, OSAGE, PERRY, PHELPS, PIKE, PULASKI, PUTNAM,
RALLS, RANDOLPH, REYNOLDS, RIPLEY, ST. CHARLES, ST. FRANCOIS,
ST. LOUIS (City and County), STE. GENEVIEVE, SCHUYLER,
SCOTLAND, SHANNON, SHELBY, SULLIVAN, TEXAS, WARREN AND
WASHINGTON COUNTIES

Rates Fringes

Line Construction:

Equipment Operator.....\$ 42.67 22.33
Groundman & Truck Driver....\$ 32.60 18.65
Lineman & Cable Splicer.....\$ 49.71 24.90

ELEC0053-004 08/01/2021

Rates Fringes

Line Construction: (ANDREW,
ATCHINSON, BARRY, BARTON,
BUCHANAN, CALDWELL, CEDAR,
CHRISTIAN, CLINTON, DADE,
DALLAS, DAVIES,, DEKALB,
DOUGLAS, GENTRY, GREENE,
GRUNDY, HARRISON, HICKORY,
HOLT, JASPER, LACLEDE,
LAWRENCE, LIVINGSTON,
MCDONALD, MERCER, NEWTON,
NODAWAY, OZARK, POLK, ST.
CLAIR, STONE, TANEY, VERNON,
WEBSTER, WORTH AND WRIGHT
COUNTIES)

Groundman Powderman.....\$ 33.58 18.34
Groundman.....\$ 31.33 17.60
Lineman Operator.....\$ 45.60 22.48
Lineman.....\$ 50.31 24.11

Line Construction; (BATES,
BENTON, CARROLL, CASS, CLAY,
HENRY, JACKSON, JOHNSON,
LAFAYETTE, PETTIS, PLATTE,
RAY AND SALINE COUNTIES)

Groundman Powderman.....\$ 33.58 18.34
Groundman.....\$ 31.33 17.60
Lineman Operator.....\$ 45.60 22.48

Lineman.....	\$ 50.31	24.11
--------------	----------	-------

ELEC0095-001 06/01/2020

BARRY, BARTON, CEDAR, DADE, JASPER, LAWRENCE, MCDONALD, NEWTON,
ST CLAIR, AND VERNON COUNTIES

Rates	Fringes
-------	---------

Electricians:

Cable Splicers.....	\$ 25.40	12.19
Electricians.....	\$ 27.43	17.44

ELEC0124-007 09/28/2021

BATES, BENTON, CARROLL, CASS, CLAY, COOPER, HENRY, JACKSON,
JOHNSON, LAFAYETTE, MORGAN, PETTIS, PLATTE, RAY AND SALINE
COUNTIES:

Rates	Fringes
-------	---------

Electricians.....	\$ 41.79	23.67
-------------------	----------	-------

ELEC0257-003 03/01/2021

AUDRAIN (Except Cuivre Township), BOONE, CALLAWAY, CAMDEN,
CHARITON, COLE, CRAWFORD, DENT, GASCONADE, HOWARD, MARIES,
MILLER, MONITEAU, OSAGE, PHELPS AND RANDOLPH COUNTIES

Rates	Fringes
-------	---------

Electricians:

Cable Splicers.....	\$ 30.42	16.085
Electricians.....	\$ 34.60	16.38

ELEC0350-002 12/01/2019

ADAIR, AUDRAIN (East of Highway 19), CLARK, KNOX, LEWIS, LINN,
MACON, MARION, MONROE, MONTGOMERY, PIKE, PUTNAM, RALLS,
SCHUYLER, SCOTLAND, SHELBY AND SULLIVAN COUNTIES

Rates	Fringes
-------	---------

Electricians.....	\$ 32.50	17.65
-------------------	----------	-------

ELEC0453-001 09/01/2020

Rates	Fringes
-------	---------

Electricians:

CHRISITAN, DALLAS, DOUGLAS, GREENE, HICKORY, HOWELL, LACLEDE, OREGON, OZARK, POLK, SHANNON, WEBSTER and WRIGHT COUNTIES..	\$ 28.10	15.81
PULASKI and TEXAS COUNTIES..	\$ 32.76	16.27
STONE and TANEY COUNTIES....	\$ 23.89	14.99

ELEC0545-003 06/01/2020

ANDREW, BUCHANAN, CLINTON, DEKALB, ATCHISON, HOLT, MERCER,

GENTRY, HARRISON, DAVIESS, GRUNDY, WORTH, LIVINGSTON, NODAWAY,
AND CALDWELL COUNTIES

	Rates	Fringes
Electricians:.....	\$ 33.00	18.10

ELEC0702-004 12/30/2019		

BOLLINGER, BUTLER, CAPE GIRARDEAU, DUNKLIN, MADISON,
MISSISSIPPI, NEW MADRID, PEMISCOT, SCOTT, STODDARD AND WAYNE
COUNTIES

	Rates	Fringes
Line Construction:		
Groundman - Class A.....	\$ 30.31	29% + 7.75
Groundman-Equipment Operator Class II (all other equipment).....	\$ 38.46	29% + 7.75
Heavy-Equipment Operator Class I (all crawler type equipment D-4 and larger)...	\$ 43.88	29% + 7.75
Lineman.....	\$ 53.51	29% + 7.75

ENGI0101-001 05/01/2020		

ANDREW, ATCHISON, BATES, BENTON, BUCHANAN, CALDWELL, CARROLL,
CHARITON, CLINTON, COOPER, DAVIESS, DEKALB, GENTRY, GRUNDY,
HARRISON, HENRY, HOLT, HOWARD, JOHNSON, LAFAYETTE, LINN,
LIVINGSTON, MERCER, NODAWAY, PETTIS, SALINE, SULLIVAN AND WORTH
COUNTIES

	Rates	Fringes
Power equipment operators:		
GROUP 1.....	\$ 34.73	18.20
GROUP 2.....	\$ 34.33	18.20
GROUP 3.....	\$ 32.33	18.20

POWER EQUIPMENT OPERATORS CLASSIFICATIONS

GROUP 1: Asphalt roller operator, finish; asphalt paver and spreader; asphalt plant operator; auto grader or trimmer or sub-grader; backhoe; blade operator (all types); boilers - 2; booster pump on dredge; bulldozer operator; boring machine (truck or crane mounted); clamshell operator; concrete mixer paver; concrete plant operator; concrete pump operator; crane operator; derrick or derrick trucks; ditching machine; dragline operator; dredge engineman; dredge operator; drill cat with compressor mounted (self-contained) or similar type self-propelled rotary drill (not air tract); drilling or boring machine (rotary-self-propelled); finishing machine operator; greaser; high loader-fork lift-skid loader (all types); hoisting engineer (2 active drums); locomotive operator (standard guage); mechanics and welders (field and plants); mucking machine operator; pile drive operator; pitman crane or boom truck (all types); push cat; quad track; scraper operators (all types); shovel operator; sideboom cats; side discharge spreader; skimmer scoop operators; slip form paver operator (CMI, Rex, Gomeco or equal); la tourneau

rooter (all tiller types); tow boat operator; truck crane; wood and log chippers (all types).

GROUP 2: A-frame truck operator; articulated dump truck; back filler operator; boilers (1); chip spreader; churn drill operator; compressor; concrete mixer operator, skip loader; concrete saws (self-propelled); conveyor operator; crusher operator; distributor operator; elevating grader operator; farm tractor (all attachments); fireman rig; float operator; form grade operator; hoisting engine (one drum); maintenance operator; multiple compactor; pavement breaker, self-propelled hydra-hammer (or similar type); paymill operator; power shield; pumps; roller operator (with or without blades); screening and washing plant; self-propelled street broom or sweeper; siphons and jets; straw blower; stump cutting machine; siphons and jets; tank car heater operator (combination boiler and booster); welding machine; vibrating machine operator (not hand held); welding machine.

GROUP 3: (a) Oiler;

(b) Oiler driver

(c) Mechanic.

HOURLY PREMIUMS:

THE FOLLOWING CLASSIFICATIONS SHALL RECEIVE (\$.25) ABOVE GROUP 1 RATE: Dragline operator - 3 yds. & over; shovel 3 yds. & over; clamshell 3 yds. & over; Crane, rigs or piledrivers, 100' of boom or over (incl. jib.), hoist - each additional active drum over 2 drums

THE FOLLOWING CLASSIFICATIONS SHALL RECEIVE (\$.50) ABOVE GROUP 1 RATE: Tandem scoop operator; crane, rigs or piledrivers 150' to 200' of boom (incl. jib.)

THE FOLLOWING CLASSIFICATIONS SHALL RECEIVE (\$.75) ABOVE GROUP 1 RATE: Crane rigs, or piledrivers 200 ft. of boom or over (including jib.)

ENGI0101-005 04/01/2020

CASS, CLAY, JACKSON, PLATTE AND RAY COUNTIES

	Rates	Fringes
Power equipment operators:		
GROUP 1.....	\$ 37.02	19.89
GROUP 2.....	\$ 35.98	19.89
GROUP 3.....	\$ 31.51	19.89
GROUP 4.....	\$ 34.86	19.89

POWER EQUIPMENT OPERATORS CLASSIFICATIONS

GROUP 1: Asphalt roller operator, finish; asphalt paver and spreader; asphalt plant operator; auto grader or trimmer or sub-grader; backhoe; blade operator (all types); boilers-2; booster pump on dredge; boring machine (truck or crane mounted); bulldozer operator; clamshell operator; concrete cleaning decontamination machine operator; concrete mixer paver; concrete plant operator; concrete pump operator; crane operator; derrick or derrick trucks; ditching machine; dragline operator; dredge engineman; dredge operator; drillcat with compressor mounted (self-contained) or similar type self propelled rotary drill (not air

tract); drilling or boring machine (rotary - self-propelled); finishing machine operator; greaser; heavy equipment robotics operator/mechanic; horizontal directional drill operator; horizontal directional drill locator; loader-forklift - skid loader (all types); hoisting engineer (2 active drums); locomotive operator (standard guage); master environmental maintenance mechanic; mechanics and welders (field and plants); mucking machine operator; piledrive operator; pitman crane or boom truck (all types); push cat; quad-track; scraper operators (all types); shovel operator; side discharge spreader; sideboom cats; skimmer scoop operator; slip-form paver (CMI, REX, Gomaco or equal); la tourneau rooter (all tiller types); tow boat operator; truck crane; ultra high perssure waterjet cutting tool system operator/mechanic; vacuum blasting machine operator/mechanic; wood and log chippers (all types)

GROUP 2: ""A"" Frame truck operator; back filler operator; boilers (1); chip spreader; churn drill operator; concrete mixer operator, skip loader; concrete saws (self-propelled); conveyor operator; crusher operator; distributor operator; elevating grader operator; farm tractor (all attachments); fireman rig; float operator; form grader operator; hoisting engine (1 drum); maintenance operator; multiple compactor; pavement breaker, self-propelled hydra- hammer (or similar type); power shield; paymill operator; pumps; siphons and jets; stump cutting machine; tank car heater operator (combination boiler and booster); compressor; roller operator (with or without blades); screening and washing plant; self-propelled street broom or sweeper; straw blower; tank car heater operator (combination boiler and booster); vibrating machine operator (not hand held)

GROUP 3: Oilers

GROUP 4: Oiler Driver (All Types)

FOOTNOTE:

HOURLY PREMIUMS FOLLOWING CLASSIFICATIONS SHALL RECEIVE (\$1.00) ABOVE GROUP 1 RATE:

Clamshells - 3 yd. capacity or over; Cranes or rigs, 80 ft. of boom or over (including jib); Draglines, 3 yd. capacity or over;

Piledrivers 80 ft. of boom or over (including jib);

Shovels & backhoes, 3 yd. capacity or over.

ENGI0101-022 05/01/2019

BARRY, BARTON, CAMDEN, CEDAR, CHRISTIAN, DADE, DALLAS, DOUGLAS, GREENE, HICKORY, JASPER, LACLEDE, LAWRENCE, MCDONALD, NEWTON, OZARK, POLK, ST. CLAIR, STONE, TANEY, VERNON, WEBSTER AND WRIGHT COUNTIES and CITY OF SPRINGFIELD

	Rates	Fringes
--	-------	---------

Power equipment operators:

GROUP 1.....	\$ 31.72	14.88
GROUP 2.....	\$ 31.37	14.88
GROUP 3.....	\$ 31.17	14.88
GROUP 4.....	\$ 29.12	14.88

POWER EQUIPMENT OPERATORS CLASSIFICATIONS

GROUP 1: Asphalt finishing machine & trench widening spreader; asphalt plant console operator; autograder; automatic slipform paver; backhoe; blade operator - all types; boat operator - tow; boilers-2; central mix concrete plant operator; clamshell operator; concrete mixer paver; crane operator; derrick or derrick trucks; ditching machine; dozer operator; dragline operator; dredge booster pump; dredge engineman; dredge operator; drill cat with compressor mounted on cat; drilling or boring machine rotary self-propelled; highloader; hoisting engine - 2 active drums; launch hammer wheel; locomotive operator; - standard gauge; mechanic and welders; mucking machine; off-road trucks; piledriver operator; pitman crane operator; push cat operator; quad trac; scoop operator - all types; shovel operator; sideboom cats; skimmer scoop operators; trenching machine operator; truck crane.

GROUP 2: A-frame; asphalt hot-mix silo; asphalt plant fireman (drum or boiler); asphalt plant man; asphalt plant man; asphalt plant mixer operator; asphalt roller operator; backfiller operator; barber-greene loader; boat operator (bridges and dams); chip spreader; concrete mixer operator - skip loader; concrete plant operator; concrete pump operator; crusher operator; dredge oiler; elevating grader operator; fork lift; greaser-fleet; hoisting engine - 1; locomotive operator - narrow gauge; multiple compactor; pavement breaker; powerbroom - self-propelled; power shield; rooter; side discharge concrete spreader; slip form finishing machine; stumpcutter machine; throttle man; tractor operator (over 50 h.p.); winch truck.

GROUP 3: Boilers - 1; chip spreader (front man); churn drill operator; clef plane operator; concrete saw operator (self-propelled); curb finishing machine; distributor operator; finishing machine operator; flex plane operator; float operator; form grader operator; pugmill operator; roller operator, other than high type asphalt; screening & washing plant operator; siphons & jets; sub-grading machine operator; spreader box operator, self-propelled (not asphalt); tank car heater operator (combination boiler & booster); tractor operator (50 h.p. or less); Ulmac, Ulric or similar spreader; vibrating machine operator, not hand;

GROUP 4: Grade checker; Oiler; Oiler-Driver

HOURLY PREMIUMS:

The following classifications shall receive \$.25 above GROUP 1 rate:

Clamshells - 3 yds. or over; Cranes - Rigs or Piledrivers, 100 ft. of boom or over (including jib);
Draglines - 3 yds. or over; Hoists - each additional active drum over 2 drums; Shovels - 3 yds. or over;

The following classifications shall receive \$.50 above GROUP 1 rate:

Tandem scoop operator; Cranes - Rigs or Piledrivers, 150 ft. to 200 ft. of boom (including jib); Tandem scoop.

The following classifications shall receive \$.75 above GROUP 1 rate:

Cranes - Rigs or Piledrivers, 200 ft. of boom or over (including jib.).

ENGI0513-004 05/06/2019

FRANKLIN, JEFFERSON, LINCOLN, ST CHARLES, AND WARREN COUNTIES

	Rates	Fringes
Power equipment operators:		
GROUP 1.....	\$ 34.36	27.36
GROUP 2.....	\$ 34.36	27.36
GROUP 3.....	\$ 33.06	27.36
GROUP 4.....	\$ 32.61	27.36

POWER EQUIPMENT OPERATORS CLASSIFICATIONS

GROUP 1: Backhoe, Cable; Backhoe, Hydraulic (2 cu yds bucket and under regardless of attachment, one oiler for 2 or 3, two oilers for 4 through 6); Backhoe, Hydraulic over 2 cu yds; Cableway; Crane, Crawler or Truck; Crane, Hydraulic - Truck or Cruiser mounted, 16 tons and over; Crane, Locomotive; crane with boom including jib over 100 ft from pin to pin; Crane using rock socket tool; Derrick, Steam; Derrick Car and Derrick Boat; Dragline, 7 cu yds and over; Dredge; Gradall, Crawler or tire mounted; Locomotive, Gas, Steam & other powers; Pile Driver, Land or Floating; Scoop, Skimmer; Shovel, Power (Electric, Gas, Steam or other powers); Shovel, Power (7 cu yds and over); Switch Boat; Whirley; Air Tugger with air compressor; Anchor Placing Barge; Asphalt Spreader; Athey Force Feeder Loader, self-propelled; Backfilling Machine; Boat Operator - Push Boat or Tow Boat (job site); Boiler, High Pressure Breaking in Period; Boom Truck, Placing or Erecting; Boring Machine, Footing Foundation; Bullfloat; Cherry Picker; Combination Concrete Hoist and Mixer (such as Mixermobile); Compressor, Two 125 CFM and under; Compressor, Two through Four over 125 CFM; Compressor when operator runs throttle; Concrete Breaker (Truck or Tractor mounted); Concrete Pump (such as Pumpcrete machine); Concrete Saw (self-propelled); Concrete Spreader; Conveyor, Large (not selfpropelled) hoisting or moving brick and concrete into, or into and on floor level, one or both; Crane, Climbing (such as Linden); Crane, Hydraulic - Rough Terrain, self-propelled; Crane, Hydraulic - Truck or Cruiser mounted - under 16 tons; Drilling machine - Self-powered, used for earth or rock drilling or boring (wagon drills and any hand drills obtaining power from other sources including concrete breakers, jackhammers and Barco equipment no engineer required); Elevating Grader; Engine Man, Dredge; Excavator or Powerbelt Machine; Finishing Machine, self-propelled oscillating screed; Forklift; Generators, Two through Six 30 KW or over; Grader, Road with power blade; Greaser; Highlift; Hoist, Concrete and Brick (Brick cages or concrete skips operating on tower, Towermobile, or similar equipment); Hoist, Three or more drums in use; Hoist, Stack; Hydro-Hammer; Lad-A-Vator, hoisting brick or concrete; Loading Machine such as Barber-Greene; Mechanic on job site

GROUP 2: Air Tugger with plant air; Boiler (for power or heating shell of building or temporary enclosures in connection with construction work); Boiler, Temporary; Compressor, One over 125 CFM; Compressor, truck mounted; Conveyor, Large (not self-propelled); Conveyor, Large (not self-propelled) moving brick and concrete (distributing) on floor level; Curb Finishing Machine; Ditch Paving

Machine; Elevator (outside); Endless Chain Hoist; Fireman (as required); Form Grader; Hoist, One Drum regardless of size (except brick or concrete); Lad-A-Vator, other hoisting; Manlift; Mixer, Asphalt, over 8 cu ft capacity; Mixer, one bag capacity or less; Mixer, without side loader, two bag capacity or more; Mixer, with side loader, regardless of size, not Paver; Mud Jack (where mud jack is used in conjunction with an air compressor, operator shall be paid \$.55 per hour in addition to his basic hourly rate for covering both operations); Pug Mill operator; Pump, Sump - self powered, automatic controlled over 2"; Scissor Lift (used for hoisting); Skid Steer Loader; Sweeper, Street; Tractor, small wheel type 50 HP and under with grader blade and similar equipment; Welding Machine, One over 400 amp; Winch, operating from truck

GROUP 3: Boat operator - outboard motor, job site; Conveyors (such as Con-Vay-It) regardless of how used; Elevator (inside); Heater operator, 2 through 6; Sweeper, Floor

GROUP 4: Crane type

HOURLY PREMIUMS:

Backhoe, Hydraulic 2 cu yds or less without oiler - \$2.00;
 Crane, climbing (such as Linden) - \$.50;
 Crane, Pile Driving and Extracting - \$.50
 Crane with boom (including job) over
 100 ft from pin to pin - add \$.01 per foot
 to maximum of \$4.00);
 Crane, using rock socket tool - \$.50;
 Derrick, diesel, gas or electric hoisting material
 and erecting steel (150 ft or more above ground) - \$.50;
 Dragline, 7 cu yds and over - \$.50;
 Hoist, Three or more drums in use - \$.50;
 Scoop, Tandem - \$.50;
 Shovel, Power - 7 cu yds and over - \$.50;
 Tractor, Tandem Crawler - \$.50;
 Tunnel, man assigned to work in tunnel or
 tunnel shaft - \$.50;
 Wrecking, when machines are working on
 second floor or higher - \$.50

 ENGI0513-006 05/01/2021

ADAIR, AUDRAIN, BOLLINGER, BOONE, BUTLER, CALLAWAY, CAPE
 GIRARDEAU, CARTER, CLARK, COLE, CRAWFORD, DENT, DUNKLIN,
 GASCONADE, HOWELL, IRON, KNOX, LEWIS, MACON, MADISON, MARIES,
 MARION, MILLER, MISSISSIPPI, MONITEAU, MONROE, MONTGOMERY,
 MORGAN, NEW MADRID, OREGON, OSAGE, PEMISCOT, PERRY, PHELPS,
 PIKE, PULASKI, PUTNAM, RALLS, RANDOLPH, REYNOLDS, RIPLEY, ST.
 FRANCOIS, STE. GENEVIEVE, SCHUYLER, SCOTLAND, SCOTT, SHANNON,
 SHELBY, STODDARD, TEXAS, WASHINGTON, AND WAYNE COUNTIES

	Rates	Fringes
--	-------	---------

Power equipment operators:

GROUP 1.....	\$ 32.14	28.22
GROUP 2.....	\$ 31.79	28.22
GROUP 3.....	\$ 31.59	28.22
GROUP 4.....	\$ 27.94	28.22

POWER EQUIPMENT OPERATORS CLASSIFICATIONS

GROUP 1: Asphalt finishing machine & trench widening spreader, asphalt plant console operator; autograder; automatic slipform paver; back hoe; blade operator - all types; boat operator tow; boiler two; central mix concrete plant operator; clam shell operator; concrete mixer paver; crane operator; derrick or derrick trucks; ditching machine; dozer operator; dragline operator; dredge booster pump; dredge engineman; dredge operator; drill cat with compressor mounted on cat; drilling or boring machine rotary self-propelled; highloader; hoisting engine 2 active drums; launchhammer wheel; locomotive operator standrad guage; mechanics and welders; mucking machine; piledriver operator; pitman crane operator; push cat operator; guad-trac; scoop operator; sideboom cats; skimmer scoop operator; trenching machine operator; truck crane, shovel operator.

GROUP 2: A-Frame; asphalt hot-mix silo; asphalt roller operator asphalt plant fireman (drum or boiler); asphalt plant man; asphalt plant mixer operator; backfiller operator; barber-greene loader; boat operator (bridge & dams); chip spreader; concrete mixer operator skip loader; concrete plant operator; concrete pump operator; dredge oiler; elevating graded operator; fork lift; grease fleet; hoisting engine one; locomotive operator narrow guage; multiple compactor; pavement breaker; powerbroom self-propelled; power shield; rooter; slip-form finishing machine; stumpcutter machine; side discharge concrete spreader; throttleman; tractor operator (over 50 hp); winch truck; asphalt roller operator; crusher operator.

GROUP 3: Spreader box operator, self-propelled not asphalt; tractor operator (50 h.p. or less); boilers one; chip spreader (front man); churn drill operator; compressor over 105 CFM 2-3 pumps 4" & over; 2-3 light plant 7.5 KWA or any combination thereof; clef plane operator; compressor maintenance operator 2 or 3; concrete saw operator (self-propelled); curb finishing mancine; distributor operator; finishing machine operator; flex plane operator; float operator; form grader operator; pugmill operator; riller operator other than high type asphalt; screening & washing plant operator; siphons & jets; subgrading machine operator; tank car heater (combination boiler & booster); ulmac, ulric or similar spreader; vibrating machine operator; hydrobroom.

GROUP 4: Oiler; grout machine; oiler driver; compressor over 105 CFM one; conveyor operator one; maintenance operator; pump 4" & over one.

FOOTNOTE: HOURLY PREMIUMS

Backhoe hydraulic, 2 cu. yds. or under Without oiler - \$2.00
 Certified Crane Operator - \$1.50;
 Certified Hazardous Material Operator \$1.50;
 Crane, climbing (such as Linden) - \$0.50;
 Crane, pile driving and extracting - \$0.50;
 Crane, with boom (including jib) over 100' from pin to pin
 add \$0.01 per foot to maximum of \$4.00;
 Crane, using rock socket tool - \$0.50;
 Derrick, diesel, gas or electric, hoisting material and
 erecting steel (150' or more above the ground) - \$0.50;
 Dragline, 7 cu. yds, and over - \$0.50;
 Hoist, three or more drums in use - \$0.50; Scoop, Tandem -

\$0.50;
 Shovel, power - 7 cu. yds. or more - \$0.50;
 Tractor, tandem crawler - \$0.50;
 Tunnel, man assigned to work in tunnel or tunnel shaft -
 \$0.50;
 Wrecking, when machine is working on second floor or higher -
 \$0.50;

 ENGI0513-007 05/06/2019

ST. LOUIS CITY AND COUNTY

	Rates	Fringes
Power equipment operators:		
GROUP 1.....	\$ 34.36	27.36
GROUP 2.....	\$ 34.36	27.36
GROUP 3.....	\$ 33.06	27.36
GROUP 4.....	\$ 32.61	27.36

POWER EQUIPMENT OPERATORS CLASSIFICATIONS

GROUP 1: Backhoe, cable or hydraulic; cableway; crane crawler or truck; crane, hydraulic-truck or cruiser mounted 16 tons & over; crane locomotive; derrick, steam; derrick car & derrick boat; dragline; dredge; gradall, crawler or tire mounted; locomotive, gas, steam & other powers; pile driver, land or floating; scoop, skimmer; shovel, power (steam, gas, electric or other powers); switch boat; whirley.

GROUP 2: Air tugger w/air compressor; anchor-placing barge; asphalt spreader; atehy force feeder loader (self-propelled); backfilling machine; backhoe-loader; boat operator-push boat or tow boat (job site); boiler, high pressure breaking in period; boom truck, placing or erecting; boring machine, footing foundation; bull- float; cherry picker; combination concrete hoist & mixer (such as mixer mobile); compressor (when operator runs throttle); concrete breaker (truck or tractor mounted); concrete pump, such as pump-crete machine; concrete saw (self-propelled), concrete spreader; conveyor, large (not self-propelled), hoisting or moving brick and concrete into, or into and on floor level, one or both; crane, hydraulic-rough terrain, self-propelled; crane hydraulic-truck or cruiser mounted-under 16 tons; drilling machines, self-powered use for earth or rock drilling or boring (wagon drills nd any hand drills obtaining power from other sources including concrete breakers, jackhammers and barco equipment-no engineer required); elevating grader; engineman, dredge; excavator or powerbelt machine; finishing machine, self-propelled oscillating screed; forklift; grader, road with power blade; highlift. greaser; hoist, stack, hydro-hammer; loading machine (such as barber-greene); machanic, on job site; mixer, pipe wrapping machines; plant asphalt; plant, concrete producing or ready-mix job site; plant heating-job site; plant mixing-job site; plant power, generating-job site; pumps, two through six self-powered over 2""; pumps, electric submersible, two through six, over 4""; quad-track; roller, asphalt, top or sub-grade; scoop, tractor drawn; spreader box; sub-grader; tie tamper; tractor-crawler, or wheel type with or without power unit, power take-offs and attachments regardless of size; trenching machine; tunnel boring machine; vibrating machine

automatic, automatic propelled; welding machines (gasoline or diesel) two through six; well drilling machine

GROUP 3: Conveyor, large (not self-propelled); conveyor, large (not self-propelled) moving brick and concrete distributing) on floor level; mixer two or more mixers of one bag capacity or less; air tugger w/plant air; boiler, for power or heating on construction projects; boiler, temporary; compressor (mounted on truck; curb finishing machine; ditch paving machine; elevator; endless chain hoist; form grader; hoist, one drum regardless of size; lad-a-vator; manlift; mixer, asphalt, over 8 cu. ft. capacity, without side loader, 2 bag capacity or more; mixer, with side loader, regardless of size; pug mill operator; pump, sump-self-powered, automatic controlled over 2" during use in connection with construction work; sweeper, street; welding machine, one over 400 amp.; winch operating from truck; scissor lift (used for hoisting); tractor, small wheel type 50 h.p. & under with grader blade & similar equipment; Oiler on dredge and on truck crane.

GROUP 4: Boat operator-outboard motor (job site); conveyor (such as con-vay-it) regardless of how used; sweeper, floor

HOURLY PREMIUMS:

Backhoe, hydraulic	
2 cu. yds. or under without oiler	\$2.00
Certified Crane Operator	1.50
Certified Hazardous Material Operator	1.50
Crane, climbing (such as Linden)	.50
Crane, pile driving and extracting	.50
Crane, with boom (including jib) over 100' (from pin to pin) add \$.01 per foot to maximum of	4.00
Crane, using rock socket tool	.50
Derrick, diesel, gas or electric, hoisting material and erecting steel (150' or more above ground)	.50
Dragline, 7 cu. yds. and over	.50
Hoist, three (3) or more drums in use	.50
Scoop, Tandem	.50
Shovel, power - 7 cu. yds. or more	.50
Tractor, tandem crawler	.50
Tunnel, man assigned to work in tunnel or tunnel shaft	.50
Wrecking, when machine is working on second floor or higher	.50

IRON0010-012 04/01/2021

Rates	Fringes
-------	---------

Ironworkers:

ANDREW, BARTON, BENTON,
CAMDEN, CEDAR, CHARITON,
CHRISTIAN, COOPER, DADE,
DALLAS, DAVIESS, DE KALB,
GENTRY, GREENE, GRUNDY,
HARRISON, HICKORY, HOLT,
HOWARD, LACLEDE, LINN,
LIVINGSTON, MERCER,
MONITEAU, MORGAN, NODAWAY,
POLK, PUTNAM, RANDLOPH,
ST. CLAIR, SULLIVAN,

TANEY, VERNON, WEBSTER,
 WRIGHT and WORTH Counties
 and portions of ADAIR,
 BOONE, MACON, MILLER and
 RANDOLPH Counties.....\$ 31.50 31.99

ANDREW, BARTON, BENTON,
 CAMDEN, CEDAR, CHARITON,
 CHRISTIAN, COOPER, DADE,
 DALLAS, DAVIESS, DE KALB,
 GENTRY, GREENE, GRUNDY,
 HARRISON, HICKORY, HOLT,
 HOWARD, LACLEDE, LINN,
 LIVINGSTON, MERCER,
 MONITEAU, MORGAN, NODAWAY,
 PETTIS, POLK, PUTNAM,
 RANDLOPH, ST. CLAIR,
 SULLIVAN, TANEY, VERNON,
 WEBSTER, WRIGHT and WORTH
 Counties and portions of
 ADAIR, BOONE, MACON,
 MILLER and RANDOLPH
 Counties.....\$ 30.55 30.44

ATCHISON, BATES, BUCHANAN,
 CALDWELL, CARROLL, CASS,
 CLAY, CLINTON, HENRY,
 JACKSON, JOHNSON,
 LAFAYETTE, PETTIS, PLATTE,
 SALINE, AND RAY COUNTIES....\$ 34.50 31.99

 IRON0321-002 08/01/2021

DOUGLAS, HOWELL and OZARK COUNTIES

	Rates	Fringes
Ironworker.....	\$ 23.00	19.61

 IRON0396-004 08/04/2021

ST. LOUIS (City and County), ST. CHARLES, JEFFERSON, IRON,
 FRANKLIN, LINCOLN, WARREN, WASHINGTON, ST. FRANCOIS, STE.
 GENEVIEVE, and REYNOLDS Counties; and portions of MADISON,
 PERRY, BOLLINGER, WAYNE, and CARTER Counties

	Rates	Fringes
Ironworker.....	\$ 36.71	28.96

 IRON0396-009 08/04/2021

AUDRAIN, CALLAWAY, COLE, CRAWFORD, DENT, GASCONADE, MARIES,
 MONTGOMERY, OSAGE, PHELPS, PIKE, PULASKI, TEXAS and WRIGHT
 Counties; and portions of BOONE, CAMDEN, DOUGLAS, HOWELL,
 LACLEDE, MILLER, MONROE, OREGON, SHANNON and RALLS Counties

	Rates	Fringes
Ironworker.....	\$ 32.24	28.96

 IRON0577-005 08/01/2021

ADAIR, CLARK, KNOX, LEWIS, MACON, MARION, MONROE, RALLS,
 SCHUYLER, SCOTLAND, AND SHELBY COUNTIES

	Rates	Fringes
Ironworker.....	\$ 28.00	24.85

IRON0584-004 06/01/2021		

BARRY, JASPER, LAWRENCE, MCDONALD, NEWTON AND STONE Counties

	Rates	Fringes
Ironworkers:.....	\$ 26.25	15.35

IRON0782-003 08/01/2021		

CAPE GIRARDEAU, MISSISSIPPI, NEW MADRID, SCOTT, & STODDARD
Counties; and portions of BOLLINGER, BUTLER, CARTER, DUNKLIN,
MADISON, PEMISCOT, PERRY, RIPLEY, and WAYNE Counties

	Rates	Fringes
Ironworkers:		
Locks, Dams, Bridges and other major work on the Mississippi and Ohio River only.....	\$ 35.13	28.27
All Other Work.....	\$ 29.34	24.12

LAB00042-003 03/04/2021		

ST. LOUIS (City and County)

	Rates	Fringes
LABORER		
Plumber Laborer.....	\$ 35.00	16.37

LAB00042-005 03/04/2021		

ST. LOUIS (City and County)

	Rates	Fringes
LABORER		
Dynamiter, Powderman.....	\$ 35.00	16.37
Laborers, Flaggers.....	\$ 35.00	16.37
Wrecking.....	\$ 35.00	16.37

* LAB00424-002 05/01/2021		

	Rates	Fringes
LABORER		
ADAIR, AUDRAIN, BOONE, CALLAWAY, CHARITON, CLARK, COLE, COOPER, HOWARD, IRON, KNOX, LEWIS, LINN, MACON, MADISON, MARION, MILLER, MONITEAU, MONROE, PERRY, PIKE, PUTNAM, RALLS, RANDOLPH, REYNOLDS, ST. FRANCOIS, STE. GENEVIEVE, SCHUYLER,		

SCOTLAND, SHELBY AND SULLIVAN COUNTIES		
GROUP 1.....	\$ 31.47	14.97
GROUP 2.....	\$ 31.47	14.97
BOLLINGER, BUTLER, CAPE GIRARDEAU, CARTER, CRAWFORD, DENT, DUNKLIN, GASCONADE, HOWELL, MARIES, MISSISSIPPI, NEW MADRID, OREGON, OSAGE, PEMISCOT, PHELPS, PULASKI, RIPLEY, SCOTT, SHANNON, STODDARD, TEXAS, WASHINGTON AND WAYNE COUNTIES		
GROUP 1.....	\$ 31.47	14.97
GROUP 2.....	\$ 31.47	14.97
FRANKLIN COUNTY		
GROUP 1.....	\$ 33.69	14.97
GROUP 2.....	\$ 34.29	14.97
JEFFERSON COUNTY		
GROUP 1.....	\$ 33.74	14.97
GROUP 2.....	\$ 34.34	14.97
LINCOLN, MONTGOMERY AND WARREN COUNTIES		
GROUP 1.....	\$ 32.49	14.97
GROUP 2.....	\$ 33.09	14.97
ST.CHARLES COUNTY		
GROUP 1.....	\$ 35.16	14.97
GROUP 2.....	\$ 35.16	14.97

LABORERS CLASSIFICATIONS

GROUP 1 - General laborer-flagman, carpenter tenders; salamander Tenders; Dump Man; Ticket Takers; loading trucks under bins, hoppers, and conveyors; track man; cement handler; dump man on earth fill; georgie buggy man; material batch hopper man; spreader on asphalt machine; material mixer man (except on manholes); coffer dams; riprap pavers rock, block or brick; scaffolds over ten feet not self-supported from ground up; skip man on concrete paving; wire mesh setters on concrete paving; all work in connection with sewer, water, gas, gasoling, oil, drainage pipe, conduit pipe, tile and duct lines and all other pipe lines; power tool operator; all work in connection with hydraulic or general dredging operations; form setters, puddlers (paving only); straw blower nozzle man; asphalt plant platform man; chuck tender; crusher feeder; men handling creosote ties or creosote materials; men working with and handling epoxy material; toppler of standing trees; feeder man on wood pulverizers, board and willow mat weavers and cable tiers on river work; deck hands; pile dike and revetment work; all laborers working on underground tunnels less than 25 ft. where compressed air is not used; abutment and pier hole men working six (6) ft. or more below ground; men working in coffer dams for bridge piers and footing in the river; barco tamper; jackson or any other similar tamp; cutting torch man; liners, curb, gutters, ditch lines; hot mastic kettlemen; hot tar applicator; hand blade operator; mortar men or brick or block manholes; rubbing concrete, air tool operator under 65 lbs.; caulker and lead man; chain or concrete saw under 15 h.p.; signal Gan; Guard rail and sign erectors.

GROUP 2 - Skilled laborers - Vibrator man; asphalt raker;

head pipe layer on sewer work; batterboard man on pipe and ditch work; cliff scalers working from bosun's chairs; scaffolds or platforms on dams or power plants over 10 ft. high; air tool operator over 65 lbs.; stringline man on concrete paving; sandblast man; laser beam man; wagon drill; churn drill; air track drill and all other similar type drills, gunite nozzle man; pressure grout man; screed man on asphalt; concrete saw 15 h.p. and over; grade checker; stringline man on electronic grade control; manhole builder; dynamite man; powder man; welder; tunnel man; waterblaster - 1000 psi or over; asbestos and/or hazardous waste removal and/or disposal

LAB00579-005 05/01/2021

	Rates	Fringes
--	-------	---------

LABORER (ANDREW, ATCHISON,
BUCHANAN, CALDWELL, CLINTON,
DAVIESS, DEKALB, GENTRY,
GRUNDY, HARRISON, HOLT,
LIVINGSTON, MERCER, NODAWAY
and WORTH COUNTIES.)

GROUP 1.....	\$ 27.71	15.92
GROUP 2.....	\$ 28.06	15.92

LABORER (BARRY, BARTON,
BATES, BENTON, CAMDEN,
CARROLL, CEDAR, CHRISTIAN,
DADE, DALLAS, DOUGLAS,
GREENE, HENRY. HICKORY,
JASPER, JOHNSON, LACLEDE,
LAWRENCE, MCDONALD, MORGAN,
NEWTON, OZARK, PETTIS, POLK,
ST.CLAIR, SALINE, STONE,
TANEY, VERNON, WEBSTER and
WRIGHT COUNTIES)

GROUP 1.....	\$ 26.76	15.07
GROUP 2.....	\$ 27.31	15.07

LABORER (LAFAYETTE COUNTY)

GROUP 1.....	\$ 27.76	14.87
GROUP 2.....	\$ 28.11	14.87

LABORERS CLASSIFICATIONS

GROUP 1: General Laborers - Carpenter tenders; salamander tenders; loading trucks under bins; hoppers & conveyors; track men & all other general laborers; air tool operator; cement handler-bulk or sack; dump man on earth fill; georgie buggy man; material batch hopper man; material mixer man (except on manholes); coffer dams; riprap pavers - rock, block or brick; signal man; scaffolds over ten feet not self-supported from ground up; skipman on concrete paving; wire mesh setters on concrete paving; all work in connection with sewer, water, gas, gasoline, oil drainage pipe, conduit pipe, tile and duct lines and all other pipe lines; power tool operator, all work in connection with hydraulic or general dredging operations; puddlers (paving only); straw blower nozzle man; asphalt plant platform man; chuck tender; crusher feeder; men handling creosote ties or creosote materials; men working with and handling epoxy material or materials (where special protection is required); rubbing concrete; topper of standing trees; batter board man on pipe and ditch work; feeder man on wood pulverizers; board and willow mat weavers and cable tiers

on river work; deck hands; pile dike and revetment work; all laborers working on underground tunnels less than 25 feet where compressed air is not used; abutment and pier hole men working six (6) feet or more below ground; men working in coffer dams for bridge piers and footings in the river; ditchliners; pressure groutmen; caulker; chain or concrete saw; cliffscalers working from scaffolds, bosuns' chairs or platforms on dams or power plants over (10) feet above ground; mortarmen on brick or block manholes; toxic and hazardous waste work.

GROUP 2: Skilled Laborers - Head pipe layer on sewer work; laser beam man; Jackson or any other similar tamp; cutting torch man; form setters; liners and stringline men on concrete paving, curb, gutters; hot mastic kettleman; hot tar applicator; sandblasting and gunite nozzlemen; air tool operator in tunnels; screed man on asphalt machine; asphalt raker; barco tamper; churn drills; air track drills and all similar drills; vibrator man; stringline man for electronic grade control; manhole builders-brick or block; dynamite and powder men; grade checker.

LAB00663-002 04/01/2021

CASS, CLAY, JACKSON, PLATTE AND RAY COUNTIES

	Rates	Fringes
LABORER		
GROUP 1.....	\$ 31.83	16.68
GROUP 2.....	\$ 33.04	16.68

LABORERS CLASSIFICATIONS

GROUP 1: General laborers, Carpenter tenders, salamander tenders, loading trucks under bins, hoppers and conveyors, track men and all other general laborers, air tool operator, cement handler (bulk or sack), chain or concrete saw, deck hands, dump man on earth fill, Georgie Buggies man, material batch hopper man, scale man, material mixer man (except on manholes), coffer dams, abutments and pier hole men working below ground, riprap pavers rock, black or brick, signal man, scaffolds over ten feet not self-supported from ground up, skipman on concrete paving, wire mesh setters on concrete paving, all work in connection with sewer, water, gas, gasoling, oil, drainage pipe, conduit pipe, tile and duct lines and all other pipelines, power tool operator, all work in connection with hydraulic or general dredging operations, straw blower nozzle man, asphalt plant platform man, chuck tender, crusher feeder, men handling creosote ties on creosote materials, men working with and handling epoxy material or materials (where special protection is required), topper of standing trees, batter board man on pipe and ditch work, feeder man on wood pulverizers, board and willow mat weavers and cable tiers on river work, deck hands, pile dike and revetment work, all laborers working on underground tunnels less than 25 feet where compressed air is not used, abutment and pier hole men working six (6) feet or more below ground, men working in coffer dams for bridge piers and footings in the river, ditchliners, pressure groutmen, caulker and chain or concrete saw, cliffscalers working from scaffolds, bosuns' chairs or platforms on dams or power plants over (10) feet above ground, mortarmen on brick or block manholes, signal

man.

GROUP 2: Skilled Laborer - spreader or screed man on asphalt machine, asphalt raker, grade checker, vibrator man, concrete saw over 5 hp., laser beam man, barco tamper, jackson or any other similar tamp, wagon driller, churn drills, air track drills and other similar drills, cutting torch man, form setters, liners and stringline men on concrete paving, curb, gutters and etc., hot mastic kettelman, hot tar applicator, hand blade operators, mortar men on brick or block manholes, sand blasting and gunnite nozzle men, rubbing concrete, air tool operator in tunnels, head pipe layer on sewer work, manhole builder (brick or block), dynamite and powder men.

PAIN0002-002 09/01/2007

CLARK, FRANKLIN, JEFFERSON, LEWIS, LINCOLN, MARION, PIKE, RALLS, ST. CHARLES, ST. LOUIS (CITY & COUNTY), AND WARREN COUNTIES

	Rates	Fringes
Painters:		
Brush and Roller; Taper.....	\$ 28.61	10.24
High work over 60 feet.....	\$ 29.11	10.24
Lead Abatement.....	\$ 29.36	10.24
Pressure Roller; High work under 60 ft.....	\$ 28.86	10.24
Spray & Abrasive Blasting; Water Blasting (Over 5000 PSI).....	\$ 30.61	10.24
Taper (Ames Tools & Bazooka).....	\$ 30.21	10.24

PAIN0002-006 04/01/2020

ADAIR, AUDRAIN, BOONE, CALLAWAY, CHARITON, COLE, GASCONADE, HOWARD, KNOX, LINN, MACON, MONROE, MONTGOMERY, OSAGE, PUTNAM, RANDOLPH, SCHUYLER, SCOTLAND, SHELBY AND SULLIVAN COUNTIES and the City of Booneville.

	Rates	Fringes
Painters:		
Bridges, Dams, Locks or Powerhouses.....	\$ 26.64	13.98
Brush and Roll; Taping, Paperhanging.....	\$ 24.64	13.98
Epoxy or Any Two Part Coating; Sandblasting; Stage or other Aerial Work - Platforms over 50 feet high; Lead Abatement.....	\$ 25.64	13.98
Spray; Structural Steel (over 50 feet).....	\$ 24.64	13.98
Tapers using Ames or Comparable Tools.....	\$ 25.39	13.98

PAIN0003-004 04/01/2019

CASS, CLAY, CLINTON, JACKSON, JOHNSON, LAFAYETTE, PLATTE & RAY

COUNTIES

	Rates	Fringes
--	-------	---------

Painters:

Bridgeman; Lead Abatement; Sandblast; Storage Bin & Tanks.....	\$ 33.41	17.76
Brush & Roller.....	\$ 30.54	17.76
Drywall.....	\$ 31.74	17.76
Paper Hanger.....	\$ 31.04	17.76
Stageman; Beltman; Steelman; Elevator Shaft; Bazooka, Boxes and Power Sander; Sprayman; Dipping...	\$ 32.41	17.76
Steeplejack.....	\$ 36.98	17.76

PAIN0003-011 04/01/2019BATES, BENTON, CALDWELL, CARROLL, COOPER, DAVIESS, GRUNDY,
HARRISON, HENRY, LIVINGSTON, MERCER, MONITEAU, MORGAN, PETTIS &
SALINE COUNTIES

	Rates	Fringes
--	-------	---------

Painters:

Bridgeman; Lead Abatement; Sandblast; Storage Bin & Tanks.....	\$ 26.73	17.76
Brush & Roller.....	\$ 24.43	17.76
Drywall.....	\$ 25.39	17.76
Paper Hanger.....	\$ 24.83	17.76
Stageman; Beltman; Steelman; Elevator Shaft; Bazooka, Boxes and Power Sander; Sprayman; Dipping...	\$ 26.35	17.76
Steeplejack.....	\$ 29.58	17.76

PAIN0203-001 04/01/2012BARRY, BARTON, CEDAR, CHRISTIAN, DADE, DALLAS, DOUGLAS, GREENE,
HICKORY, HOWELL, JASPER, LAWRENCE, MCDONALD, NEWTON, OZARK,
POLK, ST. CLAIR, STONE, TANEY, VERNON, WEBSTER, and WRIGHT
COUNTIES

	Rates	Fringes
--	-------	---------

Painters:

Finisher.....	\$ 20.18	11.33
Painter.....	\$ 19.75	11.76
Sandblaster, High Man, Spray Man, Vinyl Hanger, Tool Operator.....	\$ 21.18	11.33

PAIN1265-003 07/01/2013CAMDEN, CRAWFORD, DENT, LACLEDE, MARIES, MILLER, PHELPS,
PULASKI AND TEXAS COUNTIES

	Rates	Fringes
--	-------	---------

Painters:

Brush and Roller.....	\$ 25.64	13.27
Floor Work.....	\$ 26.14	13.27
Lead Abatement.....	\$ 27.89	13.27
Spray.....	\$ 27.14	13.27
Structural Steel, Sandblasting and All Tank Work.....	\$ 26.89	13.27
Taping, Paperhanging.....	\$ 26.64	13.27

PAIN1292-002 09/01/2021

BOLLINGER, BUTLER, CAPE GIRARDEAU, CARTER, DUNKLIN,
 MISSISSIPPI, NEW MADRID, OREGON, PEMISCOT, PERRY, REYNOLDS,
 RIPLEY, SCOTT, SHANNON, STODDARD and WAYNE COUNTIES

	Rates	Fringes
--	-------	---------

Painters:

Bridges, Stacks & Tanks.....	\$ 33.46	14.53
Brush & Roller.....	\$ 27.96	14.53
Spray & Abrasive Blasting; Waterblasting (over 5000 PSI).....	\$ 29.96	14.53

Height Rates (All Areas):

Over 60 ft. \$0.50 per hour.

Under 60 ft. \$0.25 per hour.

PAIN1292-003 09/01/2021

IRON, MADISON, ST. FRANCOIS, STE. GENEVIEVE and WASHINGTON
 COUNTIES

	Rates	Fringes
--	-------	---------

Painters:

Bridges, Stacks & Tanks.....	\$ 33.46	14.53
Brush & Roller.....	\$ 27.96	14.53
Spray & Abrasive Blasting; Waterblasting (Over 5000 PSI).....	\$ 29.96	14.53

Height Rates (All Areas):

Over 60 ft. \$0.50 per hour

Under 60 ft. \$0.25 per hour.

PAIN2012-001 04/01/2020

ANDREW, ATCHISON, BUCHANAN, DE KALB, GENTRY, HOLT, NODAWAY &
 WORTH COUNTIES

	Rates	Fringes
--	-------	---------

Painters:

Brush & Roller.....	\$ 32.91	17.86
Sandblaster.....	\$ 34.41	17.86
Steeplejack.....	\$ 37.98	17.86

PLAS0518-006 03/01/2020

BARRY, BARTON, CEDAR, CHRISTIAN, DADE, DALLAS, DOUGLAS, GREENE,
HICKORY, JASPER, LACLEDE, LAWRENCE, MCDONALD, NEWTON, OZARK,
POLK, ST. CLAIR, STONE, TANEY, VERNON, WEBSTER, AND WRIGHT
COUNTIES

	Rates	Fringes
CEMENT MASON/CONCRETE FINISHER...	\$ 24.44	12.11

PLAS0518-007 04/01/2021

CASS (Richards-Gebaur AFB only), CLAY, JACKSON, PLATTE AND RAY
COUNTIES

	Rates	Fringes
Cement Masons:.....	\$ 33.67	18.30

PLAS0518-011 04/01/2019

ANDREW, ATCHISON, BATES, BUCHANNAN, CLINTON, DEKALB, GENTRY,
HENRY, HOLT, JOHNSON, LAFAYETTE, NODAWAY & WORTH COUNTIES

	Rates	Fringes
CEMENT MASON/CONCRETE FINISHER...	\$ 32.00	20.13

PLAS0527-001 04/01/2018

	Rates	Fringes
CEMENT MASON FRANKLIN, LINCOLN AND WARREN COUNTIES.....	\$ 30.74	18.07
JEFFERSON, ST. CHARLES COUNTIES AND ST. LOUIS (City and County).....	\$ 32.66	18.62

PLAS0527-004 06/01/2017

CRAWFORD, DENT, IRON, MADISON, MARION, PHELPS, PIKE, PULASKI,
RALLS, REYNOLDS, ST. FRANCOIS, STE. GENEVIEVE, SHANNON, TEXAS,
WASHINGTON COUNTIES

	Rates	Fringes
CEMENT MASON.....	\$ 28.10	18.07

PLAS0908-001 05/01/2021

BOLLINGER, BUTLER, CAPE GIRARDEAU, CARTER, DUNKLIN, HOWELL,
MISSISSIPPI, NEW MADRID, OREGON, PEMISCOT, PERRY, RIPLEY,
SCOTT, STODDARD, AND WAYNE COUNTIES

	Rates	Fringes
CEMENT MASON.....	\$ 30.30	17.53

PLAS0908-005 05/01/2021

BENTON, CALDWELL, CALLAWAY, CAMDEN, CARROLL, COLE, DAVIESS,
GASCONADE, GRUNDY, HARRISON, LIVINGSTON, MACON, MARIES, MERCER,
MILLER, MONTGOMERY, MORGAN, OSAGE, PETTIS & SALINE COUNTIES

	Rates	Fringes
CEMENT MASON.....	\$ 30.30	17.53

PLUM0008-003 06/01/2021

CASS, CLAY, JACKSON, JOHNSON, AND PLATTE COUNTIES

	Rates	Fringes
Plumbers.....	\$ 49.43	23.29

PLUM0008-017 06/01/2021

BATES, BENTON, CARROLL, HENRY, LAFAYETTE, MORGAN, PETTIS, RAY,
ST. CLAIR, SALINE AND VERNON COUNTIES

	Rates	Fringes
Plumbers.....	\$ 49.43	23.29

PLUM0045-003 08/01/2021

ANDREW, ATCHISON, BUCHANAN, CALDWELL, CLINTON, DAVIESS, DEKALB,
GENTRY, HARRISON, HOLT, NODAWAY AND WORTH COUNTIES

	Rates	Fringes
Plumbers and Pipefitters.....	\$ 39.80	25.05

* PLUM0178-003 11/01/2021

BARRY, CEDAR, CHRISTIAN, DADE, DALLAS, DOUGLAS, GREENE,
HICKORY, LACLEDE, LAWRENCE, POLK, STONE, TANEY, WEBSTER AND
WRIGHT COUNTIES

	Rates	Fringes
Plumbers and Pipefitters.....	\$ 34.25	15.32

* PLUM0178-006 11/01/2021

BARTON, JASPER, MCDONALD AND NEWTON COUNTIES

	Rates	Fringes
Plumbers and Pipefitters		
Projects \$750,000 & under...	\$ 31.28	15.32
Projects over \$750,000.....	\$ 34.25	15.32

PLUM0533-004 06/01/2021

BATES, BENTON, CARROLL, CASS, CLAY, HENRY, HICKORY, JACKSON,
JOHNSON, LAFAYETTE, MORGAN, PETTIS, PLATTE, RAY, SALINE, ST.
CLAIR AND VERNON COUNTIES

	Rates	Fringes
Pipefitters.....	\$ 49.98	22.95

PLUM0562-004 07/01/2021		

ADAIR, AUDRAIN, BOLLINGER, BOONE, BUTLER, CALLAWAY, CAMDEN, CAPE GIRARDEAU, CARTER, CHARITON, CLARK, COLE, COOPER, CRAWFORD, DENT, DUNKLIN, FRANKLIN, GASCONADE, GRUNDY, HOWARD, HOWELL, IRON, JEFFERSON, KNOX, LEWIS, LINCOLN, LINN, LIVINGSTON, MACON, MADISON, MARIES, MARION, MERCER, MILLER, MISSISSIPPI, MONITEAU, MONROE, MONTGOMERY, NEW MADRID, OREGON, OSAGE, PEMISCOTT, PERRY, PHELPS, PIKE, PULASKI, PUTNAM, RALLS, RANDOLPH, REYNOLDS, RIPLEY, ST. CHARLES, ST. FRANCOIS, STE. GENEVIEVE, ST. LOUIS, SCHUYLER, SCOTLAND, SCOTT, SHANNON, SHELBY, STODDARD, SULLIVAN, TEXAS, WARREN, WASHINGTON, AND WAYNE COUNTIES.

	Rates	Fringes
Plumbers and Pipefitters Mechanical Contracts including all piping and temperature control work \$7.0 million & under.....	\$ 43.16	21.49
Mechanical Contracts including all piping and temperature control work over \$7.0 million.....	\$ 45.10	27.85

PLUM0562-016 07/01/2021		

CAMDEN, COLE, CRAWFORD, FRANKLIN, JEFFERSON, MARIES, MILLER, MONITEAU, OSAGE, PHELPS, PULASKI, ST. CHARLES, ST. LOUIS (City and County), WARREN and WASHINGTON COUNTIES

	Rates	Fringes
Plumbers Mechanical Contracts including all piping and temperature control work \$7.0 million & under.....	\$ 43.16	21.49
Mechanical Contracts including all piping and temperature control work over \$7.0 million.....	\$ 45.10	27.85

TEAM0013-001 05/01/2021		

	Rates	Fringes
Truck drivers (ADAIR, BUTLER, CLARK, DUNKIN, HOWELL, KNOX, LEWIS, OREGON, PUTNAM, RIPLEY, SCHUYLER AND SCOTLAND COUNTIES)		
GROUP 1.....	\$ 31.44	14.75
GROUP 2.....	\$ 31.60	14.75
GROUP 3.....	\$ 31.59	14.75
GROUP 4.....	\$ 31.71	14.75
Truck drivers (AUDRAIN, BOLLINGER, BOONE, CALLAWAY,		

CAPE GIRARDEAU, CARTER, COLE,
CRAWFORD, DENT, GASCONADE,
IRON, MACON, MADISON, MARIES,
MARION, MILLER, MISSISSIPPI,
MONROE, MONTGOMERY, NEW
MADRID, OSAGE, PEMISCOT,
PERRY, PHELPS, PIKE, PULASKI,
RALLS, REYNOLDS, ST.
FRANCOIS, STE. GENEVIEVE,
SCOTT, SHANNON, SHELBY,
STODDARD, TEXAS, WASHINGTON
AND WAYNE COUNTIES)

GROUP 1.....	\$ 32.17	14.75
GROUP 2.....	\$ 32.33	14.75
GROUP 3.....	\$ 32.32	14.75
GROUP 4.....	\$ 32.44	14.75

Truck drivers (FRANKLIN,
JEFFERSON and ST. CHARLES
COUNTIES)

GROUP 1.....	\$ 34.53	14.75
GROUP 2.....	\$ 34.64	14.75
GROUP 3.....	\$ 34.68	14.75
GROUP 4.....	\$ 34.75	14.75

Truck drivers (LINCOLN and
WARREN COUNTIES)

GROUP 1.....	\$ 33.18	14.75
GROUP 2.....	\$ 33.29	14.75
GROUP 3.....	\$ 34.33	14.75
GROUP 4.....	\$ 33.40	14.75

TRUCK DRIVERS CLASSIFICATIONS:

GROUP 1: Flat Bed Trucks, Single Axle; Station Wagons;
Pickup Trucks; Material Trucks, Single Axle; Tank Wagon,
Single Axle

GROUP 2: Agitator and Transit Mix Trucks

GROUP 3: Flat Bed Trucks, Tandem Axle; Articulated Dump
Trucks; Material Trucks, Tandem Axle; Tank Wagon, Tandem
Axle

GROUP 4: Semi and/or Pole Trailers; Winch, Fork & Steel
Trucks; Distributor Drivers and Operators; Tank Wagon,
Semi-Trailer; Insley Wagons, Dumpsters, Half-Tracks,
Speedace, Euclids and other similar equipment; A-Frame and
Derrick Trucks; Float or Low Boy

TEAM0056-001 05/01/2020

Rates	Fringes
-------	---------

Truck drivers (ANDREW,
BARTON, BATES, BENTON,
CALDWELL, CAMDEN, CARROLL,
CEDAR, CHARITON, CHRISTIAN,
CLINTON, COOPER, DADE,
DALLAS, DAVIESS, DEKALB,
DOUGLAS, GREENE, HENRY,
HICKORY, HOWARD, JASPER,
LACLEDE, LAWRENCE, LINN,
LIVINGSTON, MONITEAU, MORGAN,
NEWTON, PETTIS, POLK,
RANDOLPH, ST. CLAIR, SALINE,

VERNON, WEBSTER AND WRIGHT
COUNTIES)

GROUP 1.....	\$ 31.37	14.25
GROUP 2.....	\$ 31.53	14.25
GROUP 3.....	\$ 31.52	14.25
GROUP 4.....	\$ 31.64	14.25

Truck drivers: (ATCHISON,
BARRY, GENTRY, GRUNDY,
HARRISON, HOLT, MCDONALD,
MERCER, NODAWAY, OZARK,
STONE, SULLIVAN, TANEY AND
WORTH COUNTIES)

GROUP 1.....	\$ 30.64	14.25
GROUP 2.....	\$ 30.80	14.25
GROUP 3.....	\$ 30.79	14.25
GROUP 4.....	\$ 30.91	14.25

Truck drivers; (BUCHANAN,
JOHNSON AND LAFAYETTE
COUNTIES)

GROUP 1.....	\$ 32.58	14.25
GROUP 2.....	\$ 32.69	14.25
GROUP 3.....	\$ 32.73	14.25
GROUP 4.....	\$ 32.80	14.25

TRUCK DRIVER CLASSIFICATIONS

GROUP 1: Flat bed trucks single axle; station wagons; pickup trucks; material trucks single axle; tank wagons single axle.

GROUP 2: Agitator and transit mix-trucks.

GROUP 3: Flat bed trucks tandem axle; articulated dump trucks; material trucks tandem axle; tank wagons tandem axle.

GROUP 4: Semi and/or pole trailers; winch, fork & steel trucks; distributor drivers & operators; tank wagons semi-trailer; insley wagons, dumpsters, half-tracks, speedace, euclids & other similar equipment; A-frames and derrick trucks; float or low boy.

TEAM0245-001 03/26/2012

BARRY, BARTON, CAMDEN, CEDAR, CHRISTIAN, DALLAS, DENT, DOUGLAS,
GREENE, HICKORY, HOWELL, JASPER, LACLEDE, LAWRENCE, MCDONALD,
MILLER, NEWTON, OZARK, PHELPS, POLK, PULASKI, SHANNON, STONE,
TANEY, TEXAS, VERNON, WEBSTER AND WRIGHT COUNTIES

	Rates	Fringes
--	-------	---------

Truck drivers:

Traffic Control Service		
Driver.....	\$ 20.45	0.00

PAID HOLIDAYS: New Year's Day, Decoration Day, July 4th,
Labor Day, Thanksgiving Day, Christmas Day, employee's
birthday and 2 personal days.

TEAM0541-001 04/01/2021

CASS, CLAY, JACKSON, PLATTE AND RAY COUNTIES

	Rates	Fringes
--	-------	---------

Truck drivers:

GROUP 1.....	\$ 33.71	16.75
GROUP 2.....	\$ 32.62	16.75
GROUP 3.....	\$ 33.14	16.75

TRUCK DRIVERS CLASSIFICATIONS

GROUP 1: Mechanics and Welders, Field; A-Frame Low Boy-Boom
ruck Driver.

GROUP 2: Articulated Dump Truck; Insley Wagons: Dump Trucks,
Excavating, 5 cu yds and over; Dumpsters; Half-Tracks:
Speedace: Euclids & similar excavating equipment Material
trucks, Tandem Two teams; Semi-Trailers; Winch trucks-Fork
trucks; Distributor Drivers and Operators; Agitator and
Transit Mix; Tank Wagon Drivers, Tandem or Semi; One Team;
Station Wagons; Pickup Trucks; Material Trucks, Single
Axle; Tank Wagon Drivers, Single Axle

GROUP 3: Oilers and Greasers - Field

TEAM0682-002 05/01/2017

ST LOUIS CITY AND COUNTY

	Rates	Fringes
--	-------	---------

Truck drivers:

GROUP 1.....	\$ 33.30	13.79+a+b+c+d
GROUP 2.....	\$ 33.50	13.79+a+b+c+d
GROUP 3.....	\$ 33.60	13.79+a+b+c+d

a. PENSION: 5/1/2012 - \$182.20 per week.

b. HAZMAT PREMIUM: If Hazmat certification on a job site is
required by a state or federal agency or requested by
project owner or by the employer, employees on that job
site shall receive \$1.50 premium pay.

TRUCK DRIVERS CLASSIFICATIONS

GROUP 1 - Pick-up trucks; forklift, single axle; flatbed
trucks; job site ambulance, and trucks or trailers of a
water level capacity of 11.99 cu. yds. or less

GROUP 2 - Trucks or trailers of a water level capacity of
12.0 cu yds. up to 22.0 cu yds. including euclids, speedace
and similar equipment of same capacity and compressors

GROUP 3 - Trucks or trailers of a water level capacity of
22.0 cu. yds & over including euclids, speedace & all
floats, flatbed trailers, boom trucks, winch trucks,
including small trailers, farm wagons tilt-top trailers,
field offices, tool trailers, concrete pumps, concrete
conveyors & gasoline tank trailers and truck mounted mobile
concrete mixers

FOOTNOTE FOR TRUCK DRIVERS:

c. PAID HOLIDAYS: Christmas Day, Independence Day, Labor
Day, Memorial Day, Veterans Day, New Years Day,

Thanksgiving Day

d. PAID VACATION: 3 days paid vacation for 600 hours of service in any one contract year; 4 days paid vacation for 800 hours of service in any one contract year; 5 days paid vacation for 1,000 hours of service in any one contract year. When such an employee has completed 3 years of continuous employment with the same employer and then works the above required number of hours, he shall receive double the number of days of vacation specified above. When such an employee has completed 10 years of continuous employment with the same employer and then works the above required number of hours, he shall receive triple the number of days of vacation specified above. When such an employee has completed 15 years of continuous employment with the same employer and then works the above required number of hours, he shall receive 4 times the number of days of vacation specified above.

WELDERS - Receive rate prescribed for craft performing operation to which welding is incidental.

=====

Note: Executive Order (EO) 13706, Establishing Paid Sick Leave for Federal Contractors applies to all contracts subject to the Davis-Bacon Act for which the contract is awarded (and any solicitation was issued) on or after January 1, 2017. If this contract is covered by the EO, the contractor must provide employees with 1 hour of paid sick leave for every 30 hours they work, up to 56 hours of paid sick leave each year. Employees must be permitted to use paid sick leave for their own illness, injury or other health-related needs, including preventive care; to assist a family member (or person who is like family to the employee) who is ill, injured, or has other health-related needs, including preventive care; or for reasons resulting from, or to assist a family member (or person who is like family to the employee) who is a victim of, domestic violence, sexual assault, or stalking. Additional information on contractor requirements and worker protections under the EO is available at www.dol.gov/whd/govcontracts.

Unlisted classifications needed for work not included within the scope of the classifications listed may be added after award only as provided in the labor standards contract clauses (29CFR 5.5 (a) (1) (ii)).

The body of each wage determination lists the classification and wage rates that have been found to be prevailing for the cited type(s) of construction in the area covered by the wage determination. The classifications are listed in alphabetical order of ""identifiers"" that indicate whether the particular rate is a union rate (current union negotiated rate for local), a survey rate (weighted average rate) or a union average rate (weighted union average rate).

Union Rate Identifiers

A four letter classification abbreviation identifier enclosed

in dotted lines beginning with characters other than ""SU"" or ""UAVG"" denotes that the union classification and rate were prevailing for that classification in the survey. Example: PLUM0198-005 07/01/2014. PLUM is an abbreviation identifier of the union which prevailed in the survey for this classification, which in this example would be Plumbers. 0198 indicates the local union number or district council number where applicable, i.e., Plumbers Local 0198. The next number, 005 in the example, is an internal number used in processing the wage determination. 07/01/2014 is the effective date of the most current negotiated rate, which in this example is July 1, 2014.

Union prevailing wage rates are updated to reflect all rate changes in the collective bargaining agreement (CBA) governing this classification and rate.

Survey Rate Identifiers

Classifications listed under the ""SU"" identifier indicate that no one rate prevailed for this classification in the survey and the published rate is derived by computing a weighted average rate based on all the rates reported in the survey for that classification. As this weighted average rate includes all rates reported in the survey, it may include both union and non-union rates. Example: SULA2012-007 5/13/2014. SU indicates the rates are survey rates based on a weighted average calculation of rates and are not majority rates. LA indicates the State of Louisiana. 2012 is the year of survey on which these classifications and rates are based. The next number, 007 in the example, is an internal number used in producing the wage determination. 5/13/2014 indicates the survey completion date for the classifications and rates under that identifier.

Survey wage rates are not updated and remain in effect until a new survey is conducted.

Union Average Rate Identifiers

Classification(s) listed under the UAVG identifier indicate that no single majority rate prevailed for those classifications; however, 100% of the data reported for the classifications was union data. EXAMPLE: UAVG-OH-0010 08/29/2014. UAVG indicates that the rate is a weighted union average rate. OH indicates the state. The next number, 0010 in the example, is an internal number used in producing the wage determination. 08/29/2014 indicates the survey completion date for the classifications and rates under that identifier.

A UAVG rate will be updated once a year, usually in January of each year, to reflect a weighted average of the current negotiated/CBA rate of the union locals from which the rate is based.

WAGE DETERMINATION APPEALS PROCESS

1.) Has there been an initial decision in the matter? This can be:

- * an existing published wage determination
- * a survey underlying a wage determination

- * a Wage and Hour Division letter setting forth a position on a wage determination matter
- * a conformance (additional classification and rate) ruling

On survey related matters, initial contact, including requests for summaries of surveys, should be with the Wage and Hour Regional Office for the area in which the survey was conducted because those Regional Offices have responsibility for the Davis-Bacon survey program. If the response from this initial contact is not satisfactory, then the process described in 2.) and 3.) should be followed.

With regard to any other matter not yet ripe for the formal process described here, initial contact should be with the Branch of Construction Wage Determinations. Write to:

Branch of Construction Wage Determinations
Wage and Hour Division
U.S. Department of Labor
200 Constitution Avenue, N.W.
Washington, DC 20210

2.) If the answer to the question in 1.) is yes, then an interested party (those affected by the action) can request review and reconsideration from the Wage and Hour Administrator (See 29 CFR Part 1.8 and 29 CFR Part 7). Write to:

Wage and Hour Administrator
U.S. Department of Labor
200 Constitution Avenue, N.W.
Washington, DC 20210

The request should be accompanied by a full statement of the interested party's position and by any information (wage payment data, project description, area practice material, etc.) that the requestor considers relevant to the issue.

3.) If the decision of the Administrator is not favorable, an interested party may appeal directly to the Administrative Review Board (formerly the Wage Appeals Board). Write to:


Administrative Review Board
U.S. Department of Labor
200 Constitution Avenue, N.W.
Washington, DC 20210

4.) All decisions by the Administrative Review Board are final.

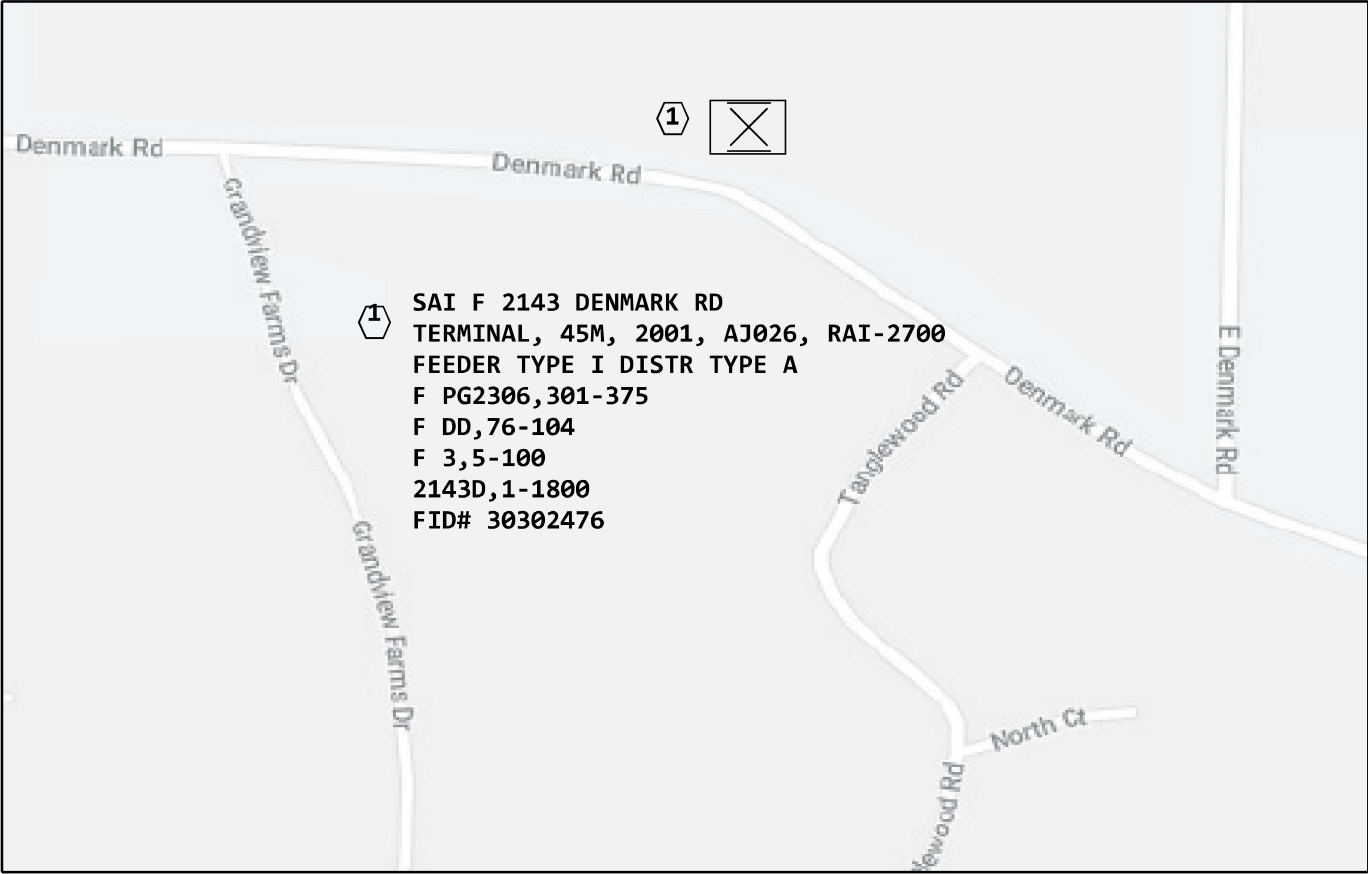
=====

END OF GENERAL DECISION"

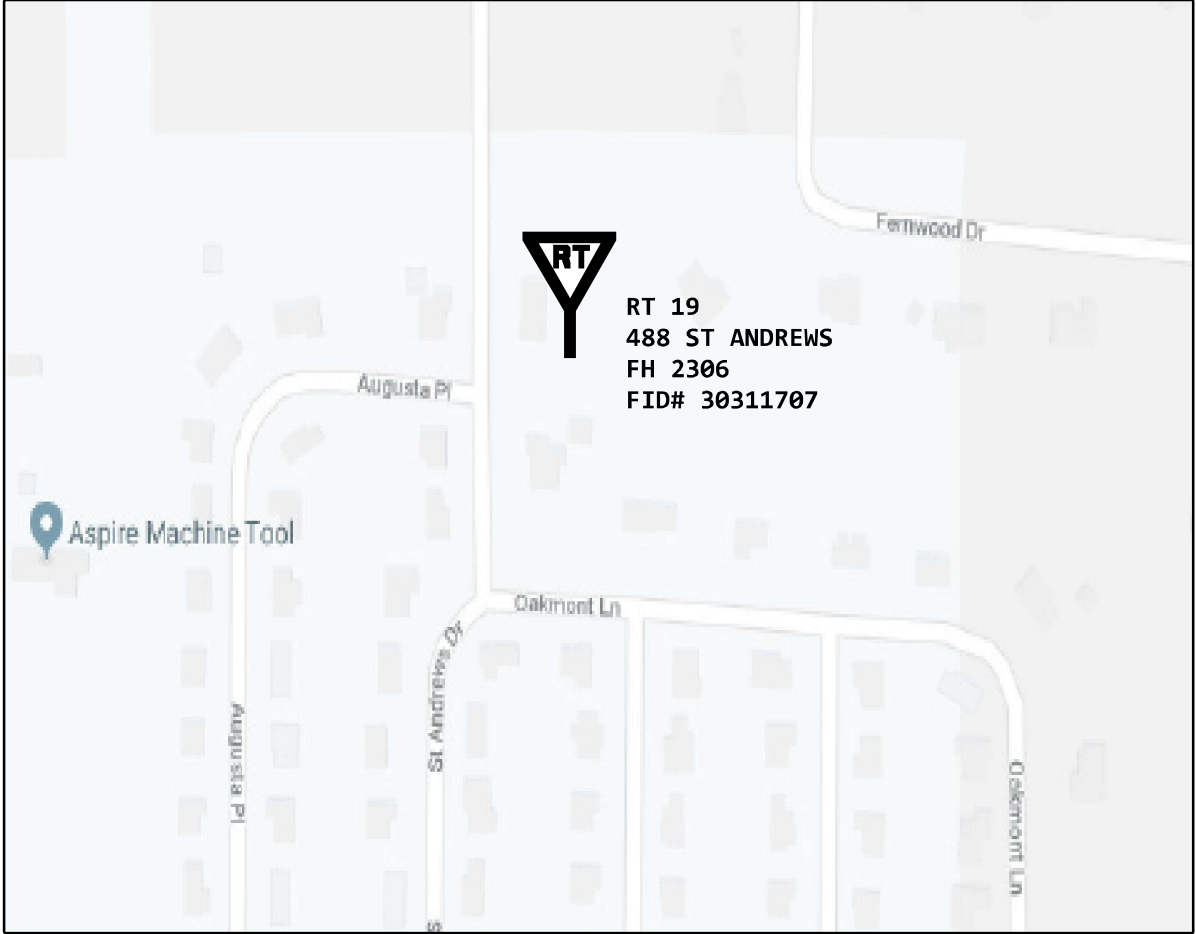
WORK LOCATION MAP



SAI LOCATION MAP



RT 19 - FH ORIGINATION



RPTR SPACING:

RT 19 - 488 ST ANDREWS
26B-2613
24B-903
RPTR 1 - DENMARK RD
24B-2653
RPTR 2 GRANDVIEW FARMS
24B-2661
RPTR 3 B-3505) 24B-3071
RPTR 4 - DENMARK RD - BIRCH CREEK
(24B-2082) 24B-2628
RT10 - 61 DENMARK RD

Wire Center Name: un
NPANNX: 636583 UNION
Tax District: AJ026
Taper Code: 230802
Contractor Name: ADB / M.MAZURANIC

PROJECT # A01MAB9		DATE SVC REQ'D 03/31/2020	
DA 2308	GEO LOC CD5148	CLLI UNINMOLU	
PRIMARY ENGR.: YENZER, TODD E			
ENGR. ID: TY8856		PERMIT REQ'D.	N
PHONE #: 3144394140		PRINT 1 OF 3	

1 (1987) 45M (1746')1313'
AFMW-UM-200
3,1-4
3,51-54
FH2306,1-12
FH2306,1001-1005
J,26-30
FH2306,31-50
FH2306,1006-1012
J,58-60
FH2306,1036-1050
FH2306,1026-1035
2143D,86-125
FH2306,26-30
2143D,131-200

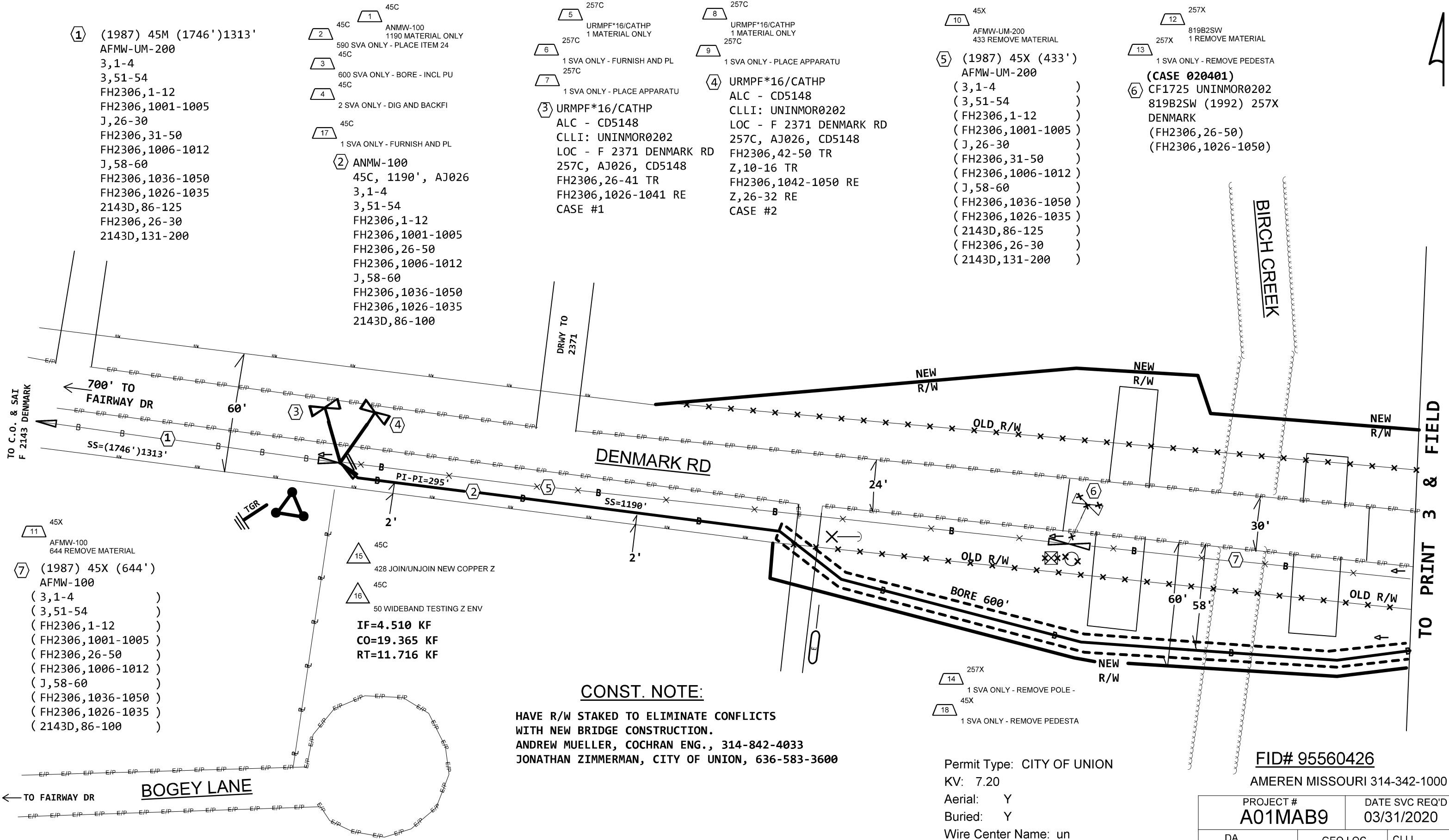
2 45C
ANMW-100
1190 MATERIAL ONLY
590 SVA ONLY - PLACE ITEM 24
45C
3 600 SVA ONLY - BORE - INCL PU
45C
4 2 SVA ONLY - DIG AND BACKFI
17 45C
1 SVA ONLY - FURNISH AND PL
2 ANMW-100
45C, 1190', AJ026
3,1-4
3,51-54
FH2306,1-12
FH2306,1001-1005
FH2306,26-50
FH2306,1006-1012
J,58-60
FH2306,1036-1050
FH2306,1026-1035
2143D,86-100

5 257C
URMPF*16/CATHP
1 MATERIAL ONLY
6 257C
1 SVA ONLY - FURNISH AND PL
7 1 SVA ONLY - PLACE APPARATU
3 URMPF*16/CATHP
ALC - CD5148
CLLI: UNINMOR0202
LOC - F 2371 DENMARK RD
257C, AJ026, CD5148
FH2306,26-41 TR
FH2306,1026-1041 RE
CASE #1

8 257C
URMPF*16/CATHP
1 MATERIAL ONLY
9 257C
1 SVA ONLY - PLACE APPARATU
4 URMPF*16/CATHP
ALC - CD5148
CLLI: UNINMOR0202
LOC - F 2371 DENMARK RD
257C, AJ026, CD5148
FH2306,42-50 TR
Z,10-16 TR
FH2306,1042-1050 RE
Z,26-32 RE
CASE #2

10 45X
AFMW-UM-200
433 REMOVE MATERIAL
5 (1987) 45X (433')
AFMW-UM-200
(3,1-4)
(3,51-54)
(FH2306,1-12)
(FH2306,1001-1005)
(J,26-30)
(FH2306,31-50)
(FH2306,1006-1012)
(J,58-60)
(FH2306,1036-1050)
(FH2306,1026-1035)
(2143D,86-125)
(FH2306,26-30)
(2143D,131-200)

12 257X
819B2SW
1 REMOVE MATERIAL
13 257X
1 SVA ONLY - REMOVE PEDESTA
(CASE 020401)
6 CF1725 UNINMOR0202
819B2SW (1992) 257X
DENMARK
(FH2306,26-50)
(FH2306,1026-1050)



11 45X
AFMW-100
644 REMOVE MATERIAL
7 (1987) 45X (644')
AFMW-100
(3,1-4)
(3,51-54)
(FH2306,1-12)
(FH2306,1001-1005)
(FH2306,26-50)
(FH2306,1006-1012)
(J,58-60)
(FH2306,1036-1050)
(FH2306,1026-1035)
(2143D,86-100)

15 45C
428 JOIN/UNJOIN NEW COPPER Z
16 45C
50 WIDEBAND TESTING Z ENV
IF=4.510 KF
CO=19.365 KF
RT=11.716 KF

14 257X
1 SVA ONLY - REMOVE POLE -
18 45X
1 SVA ONLY - REMOVE PEDESTA

CONST. NOTE:

HAVE R/W STAKED TO ELIMINATE CONFLICTS
WITH NEW BRIDGE CONSTRUCTION.
ANDREW MUELLER, COCHRAN ENG., 314-842-4033
JONATHAN ZIMMERMAN, CITY OF UNION, 636-583-3600

**CONTACT 1-800-DIG-RITE
OR 811 ON CELL PHONE
48 HOURS PRIOR TO EXCAVATION**

Permit Type: CITY OF UNION
KV: 7.20
Aerial: Y
Buried: Y
Wire Center Name: un
NPANNX: 636583 UNION
Tax District: AJ026
Taper Code: 231402
Contractor Name: ADB / M.MAZURANIC
Jam Last Task: 18

FID# 95560426
AMEREN MISSOURI 314-342-1000

PROJECT #		DATE SVC REQ'D	
A01MAB9		03/31/2020	
DA 2308	GEO LOC CD5148	CLLI UNINMOLU	
PRIMARY ENGR.: YENZER, TODD E			
ENGR. ID: TY8856		PERMIT REQ'D.	Y
PHONE #: 3144394140		PRINT 2	OF 3

PRINT 2

1

ANMW-100
45C, 0'
3,1-4
3,51-54
FH2306,1-12
FH2306,1001-1005
FH2306,26-50
FH2306,1006-1012
J,58-60
FH2306,1036-1050
FH2306,1026-1035
2143D,86-100

PRINT 2

2

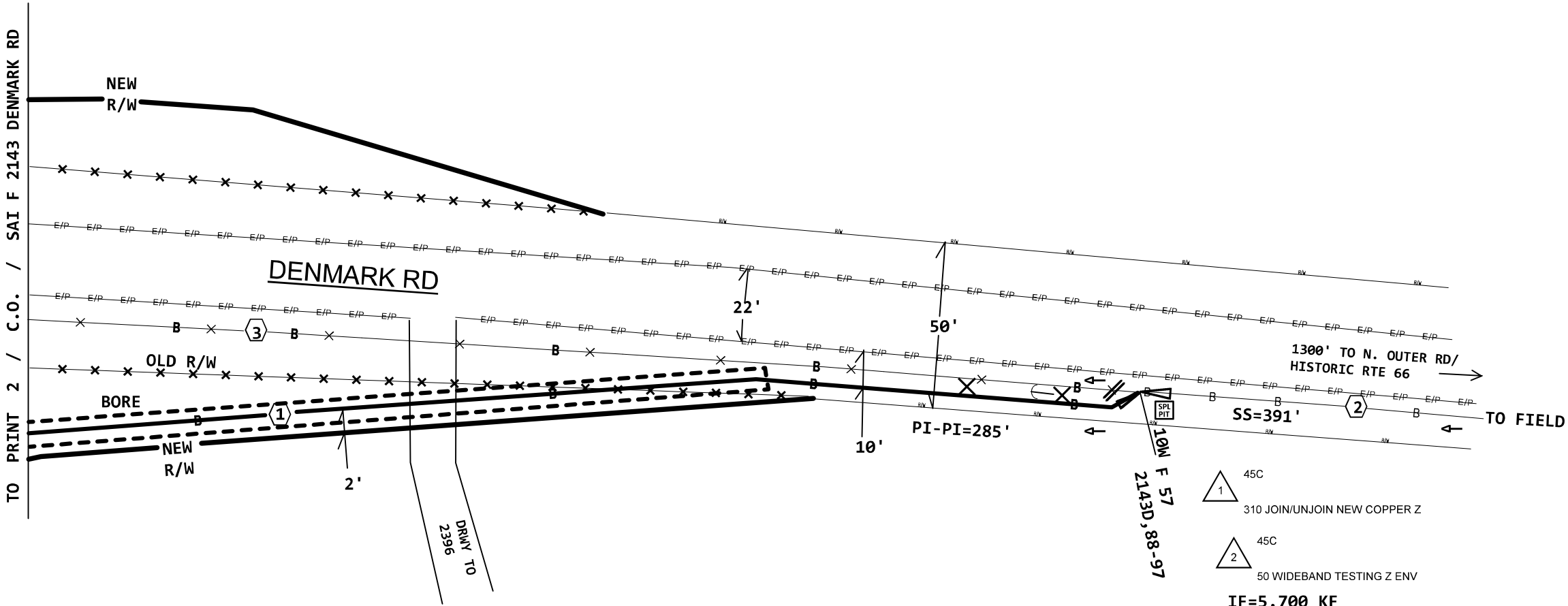
ANMW-100
45M, (2062')1418', 1987
3,1-4
3,51-54
FH2306,1-12
FH2306,1001-1005
FH2306,26-50
FH2306,1006-1012
J,58-60
FH2306,1036-1050
FH2306,1026-1035
2143D,86-100

PRINT 2

3

ANMW-100
45X, (0')
(3,1-4)
(3,51-54)
(FH2306,1-12)
(FH2306,1001-1005)
(FH2306,26-50)
(FH2306,1006-1012)
(J,58-60)
(FH2306,1036-1050)
(FH2306,1026-1035)
(2143D,86-100)

4



FID# 95560426

AMEREN MISSOURI 314-342-1000

Permit Type: CITY OF UNION
KV: 7.20
Aerial: Y
Wire Center Name: un
NPANNX: 636583 UNION
Tax District: AJ026
Taper Code: 231402
Contractor Name: ADB / M.MAZURANIC
Jam Last Task: 2

PROJECT #		DATE SVC REQ'D	
A01MAB9		03/31/2020	
DA 2308	GEO LOC CD5148	CLLI UNINMOLU	
PRIMARY ENGR.: YENZER, TODD E			
ENGR. ID: TY8856		PERMIT REQ'D.	Y
PHONE #: 3144394140		PRINT 3	OF 3

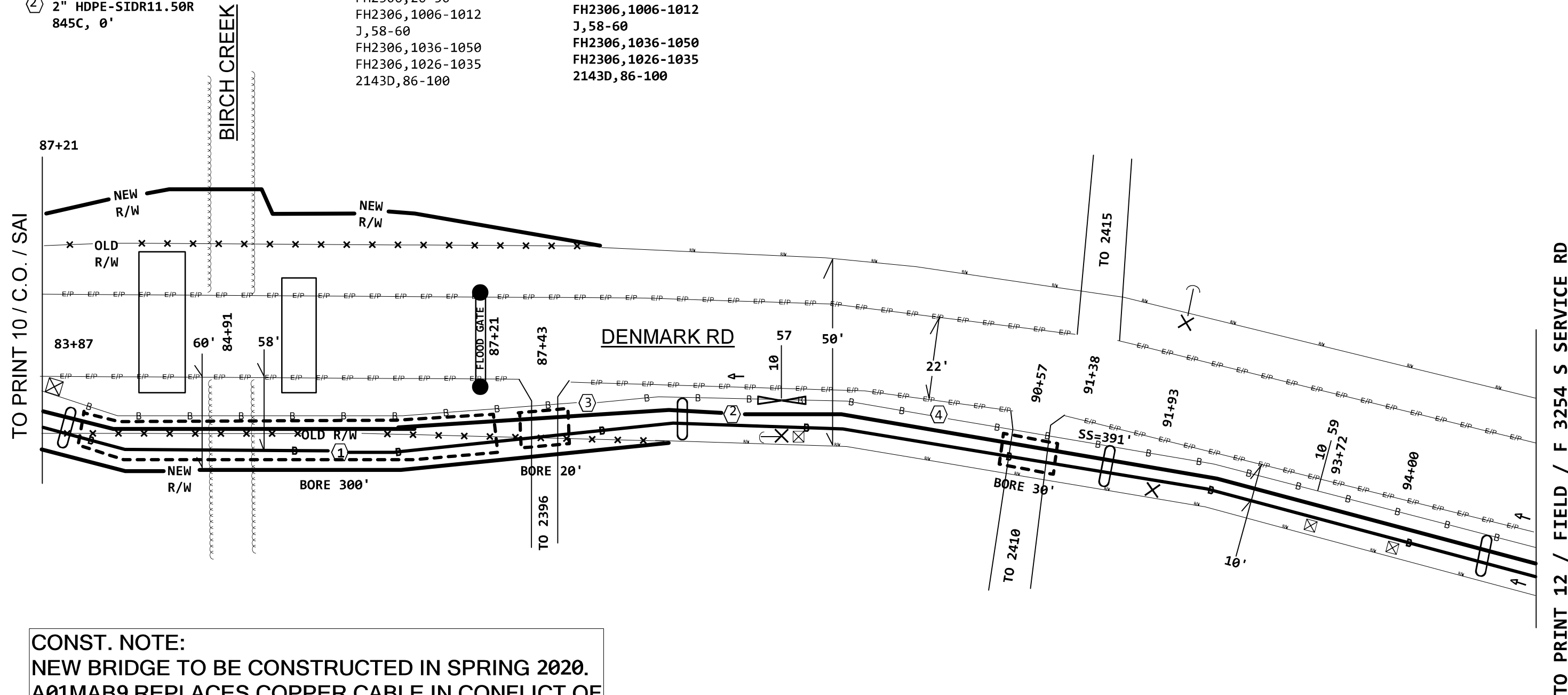
PRINT 6
① 5BQ2MT-048
845C, 0'
UN007,481-528

PRINT 5
② 2" HDPE-SIDR11.50R
845C, 0'

③ ANMW-100
45M, 0', 2019
3,1-4
3,51-54
FH2306,1-12
FH2306,1001-1005
FH2306,26-50
FH2306,1006-1012
J,58-60
FH2306,1036-1050
FH2306,1026-1035
2143D,86-100

④ AFMW-100
45M, 1418', 1987
3,1-4
3,51-54
FH2306,1-12
FH2306,1001-1005
J,26-50
FH2306,1006-1012
J,58-60
FH2306,1036-1050
FH2306,1026-1035
2143D,86-100

PRINTS 10 & 11 REFLECT COMPLETION OF
A01MAB9 - THE RELOCATION OF CABLE
AND REPEATER FOR BIRCH CREEK BRIDGE
PROJECT.



CONST. NOTE:
NEW BRIDGE TO BE CONSTRUCTED IN SPRING 2020.
A01MAB9 REPLACES COPPER CABLE IN CONFLICT OF
NEW R/W BEING ACQUIRED WHILE THIS PROJECT IS
IN DESIGN. R/W TO BE STAKED BY CITY OF UNION/
COCHRAN ENGINEERING.

CONTACT 1-800-DIG-RITE
OR 811 ON CELL PHONE
48 HOURS PRIOR TO EXCAVATION

FID# 95636011

Permit Type: MODOT
KV: 7.20
Aerial: Y
Buried: N
Wire Center Name: un
NPANNX: 636583 UNION
Tax District: AJ026
Tapper Code: 231402
Contractor Name: ADB/MAZURANIC
Jam Last Task:

& FRANKLIN CO.

AMEREN MISSOURI 314-342-1000

PROJECT # A01PSWH		DATE SVC REQ'D 03/31/2020	
DA 9999	GEO LOC CD5148	CLLI UNINMOLU	
PRIMARY ENGR.: DIEDRICH, DENISE A			
ENGR. ID: DD1635		PERMIT REQ'D.	Y
PHONE #: 6364027074		PRINT 11 OF 17	