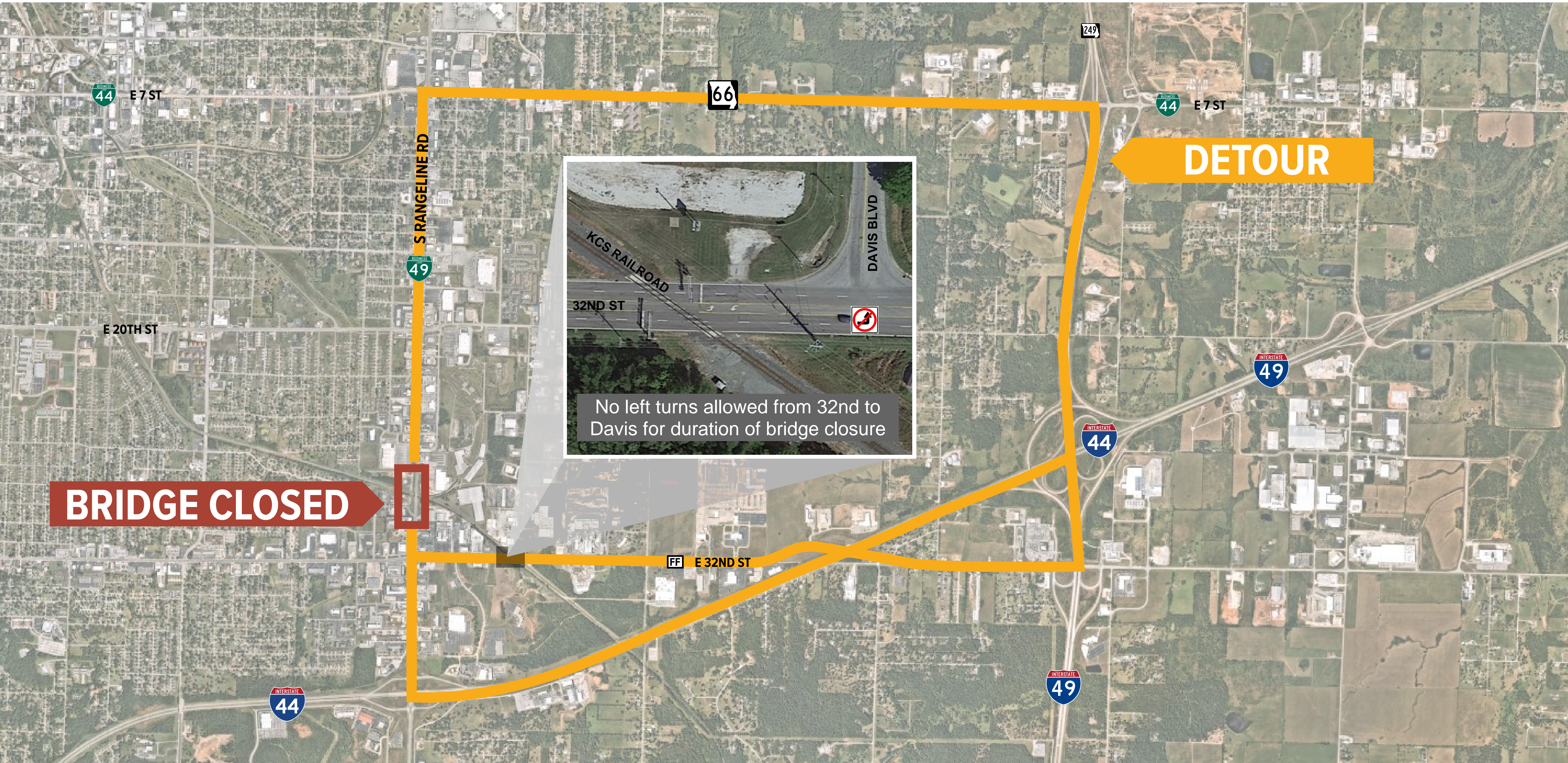


BUSINESS LOOP 49 (RANGE LINE ROAD) OVER KANSAS CITY SOUTHERN RAILROAD



DETOUR ROUTE



BRIDGE CLOSED

DETOUR

KCS RAILROAD

DAVIS BLVD

32ND ST



No left turns allowed from 32nd to Davis for duration of bridge closure