

SAFETY

Be Safe

Be Accountable

SERVICE

Be Respectful

Be Inclusive

Be Bold

Be Better

STABILITY

Be One Team

So we can be a  
great organization

MODOT

# YEAR IN REVIEW

2021

Missouri Department of Transportation



[www.modot.org](http://www.modot.org)

# 2021 YEAR IN REVIEW

## OVERVIEW

### Missouri's motor fuel tax increased for the first time in 25 years

Gov. Mike Parson signed Senate Bill 262 into law on July 13, increasing Missouri's 17-cent motor fuel tax for the first time since 1996. House Transportation Chair Becky Ruth and Senate President Pro Tem Dave Schatz led the effort to pass legislation with the support of Gov. Parson.

Beginning in October 2021, the state fuel tax will be increased by 2.5 cents per gallon and will be phased in over five years, increasing each year by 2.5 cents until reaching the full 12.5 cents in July 2025. When fully implemented, Missouri's state fuel tax will be 29.5 cents per gallon.

In total, the additional 12.5 cents will generate approximately \$500 million a year with \$350 million for state projects and \$75 million each for counties and cities. The increase offers a unique refund option. Missourians will be able to request a refund for the amount they spend annually on the new tax through the Missouri Department of Revenue.



### Bicentennial map celebrates history

As part of the year-long Missouri bicentennial celebration, MoDOT unveiled its commemorative map in August to mark Missouri's 200 years of statehood.

The bicentennial edition map features a brief history of transportation in Missouri, beginning before the state was ratified on Aug. 10, 1821, through frontier days and into the state's modern era with 33,830 miles of state-maintained routes, 4,800 miles of railroad tracks, 1,380 miles of interstate highways, 125 public-use airports and 15 public ports.

The map contains more than 60 separate features, including 4,000-plus highway shields and 1,500 towns — 11 of which are showcased in detail on the back.



### Rochepoint Bridge contracting team named

On July 1, MoDOT named the Lunda Team as the design-build contractor to replace the Interstate 70 Missouri River Bridge near Rochepoint.

The new bridge will cost approximately \$240 million and provide a safe and reliable bridge for interstate travelers for the next 100 years. It was funded in part by an \$81.2 million INFRA Grant, the largest competitive grant ever received by MoDOT.

The design includes two bridges, one in each direction of travel, each with three lanes. This allows for the replacement of the 60-year-old bridge to take place with a limited impact to traffic.

Construction on the new bridge will be completed by the end of 2024.



# 2021 YEAR IN REVIEW



## MoDOT receives Governor's Award

A team of 20 MoDOT employees received the Governor's Award for Quality and Productivity in the Efficiency and Process Improvement category at the end of 2020 for its development of an automated software system to better capture and report data for all maintenance activities.

The Maintenance Management System is a web-based platform that allows maintenance staff members, which make up about 60% of MoDOT's workforce, to assign work and equipment; document work, materials used, and work location; and provide results and performance data for leadership to use in making decisions on available resources.

The software will be used throughout the year, as MoDOT works to maintain, improve and keep the roads safe never ceases.



## MoDOT mourns three coworkers

Kansas City Maintenance Supervisor Lloyd Crawford was killed on June 28 when he was struck by a passing vehicle while placing warning signs to alert drivers to high water on Route 92 in the town of Tracy, Mo.

Crawford served nearly 18 years at MoDOT, starting in December 2003 as a seasonal maintenance worker.

St. Louis Senior Maintenance Worker James Brooks and Maintenance Worker Kaitlyn Anderson were struck and killed by a motorist on Nov. 18

during a striping operation on Telegraph Road over I-255. Intermediate Maintenance Worker Michael Brown was also injured.

James was 58 and worked for the department for nine years. Kaitlyn was 25 and worked for the department for two years. Michael is 35 and has worked for the department for two and a half years.

MoDOT has lost 137 employees in the line of duty since 1932.

## Buck O'Neil Bridge construction underway

The groundbreaking ceremony for the new Route 169 Buck O'Neil Bridge was held June 23. Construction began in July.

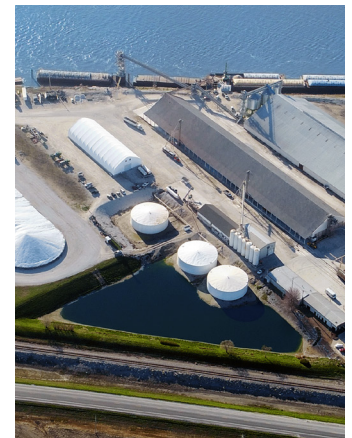
The original bridge was built in 1956 and was known as the Broadway Bridge. It served a vital role in connecting downtown Kansas City to communities north of the Missouri River. The new bridge will continue to serve this key function for 50,000 people daily for the next 100 years.

The \$220 million project is scheduled to be completed by late fall 2024. It will provide a safe, connective and accessible transportation facility that improves regional and local system performance.

Massman-Clarkson is the design-build team leading the project.

## Missouri River port receives Marine Highway designation

MoDOT received one of six Marine Highway Project designations from U.S. DOT's Maritime Administration as part of the America's Marine Highway Program (AMHP) for container-on-barge (COB) service at AGRIServices of Brunswick's port.



# 2021 YEAR IN REVIEW

This is MoDOT's first Marine Highway designation, and only 52 such designations have been approved since the program's inception in 2010. The COB project, whose application was developed in partnership with AGRIServices, will expand Missouri agribusinesses markets to the global stage as early as 2022.

The AMHP encourages the use of America's navigable waterways for the movement of freight and people as an alternative to land-based transportation.



## Pandemic challenges continue

MoDOT office employees returned to their respective statewide offices in May after 14 months working remotely. For the maintenance and construction crews in the field, it's been a challenge maintaining a consistent crew. The high levels of employee turnover and the outbreaks and quarantines associated with COVID-19 created difficulty not having enough crew members on the job.

Following CDC protocols, MoDOT provided guidelines to work through these challenges. Maintenance crews had to focus limited staffing resources on priority 1 tasks, which are deemed an immediate hazard to the public. MoDOT continued clearing roadways, building bridges, resurfacing highways and more in its quest to provide a safe and reliable transportation system in the heart of the country.

## Focus on Bridges

The program put forth by Gov. Mike Parson in 2019 is about halfway to its target goal of repairing or replacing 250 bridges by FY 2024. Through June 2021, 196 bridges have been awarded funding, 71 are under construction and 124 have been opened.

In December 2020, the 100th bridge was opened, which set the stage for MoDOT to reach the halfway point in 2021.

A total of 60 projects totaling 82 bridges were scheduled to begin construction in FY 2021 with an estimated total cost of \$117.3 million. About two-thirds of the 60 are still under construction, so the number of opened bridges will quickly approach 200 as these projects are wrapped up later this year.

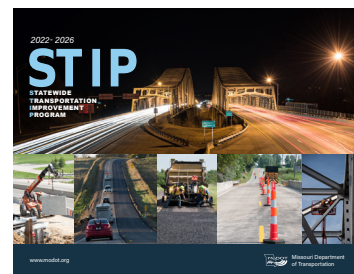
The program has 36 projects (46 bridges) scheduled to begin construction in FY 2022.

## Commission approves STIP

In July, the Missouri Highways and Transportation Commission approved the FY 2022-2026 Statewide Transportation Improvement Program (STIP).

The STIP outlines 1,434 highway and bridge projects state and regional agencies have planned during this period. These projects account for 704 lane miles of interstate pavements, 1,387 miles of major route pavements, 2,733 miles of minor route pavements and 228 bridges. It also details an annual average construction cost of \$1.1 billion per year for the five-year period.

Project information for non-highway transportation modes and a section detailing planned operations and maintenance activities for the next three years are also included. This is provided to allow Missourians to more easily see how their transportation funding is invested.



# 2021 YEAR IN REVIEW



## FARM Bridge Program

In May, MoDOT selected the Lehman-Wilson Team to design and build 31 bridges in northern Missouri identified in a design-build project called Fixing Access to Rural Missouri (FARM) Bridge Program.

This program, scheduled to be completed by November 2023, was made possible through a \$20.7 million federal grant and \$5.2 million in MoDOT funds, and is in addition to Gov. Mike Parson's Focus on Bridges program.

While these bridges do not receive high daily traffic volume, they often provide crucial access for rural Missourians. The average age of these bridges is 80 years.

The bridges to be worked on are weight-restricted, in poor condition, on timber pile or are one-lane but carrying two-way traffic.

## Missouri set to surpass 1,000 highway fatalities

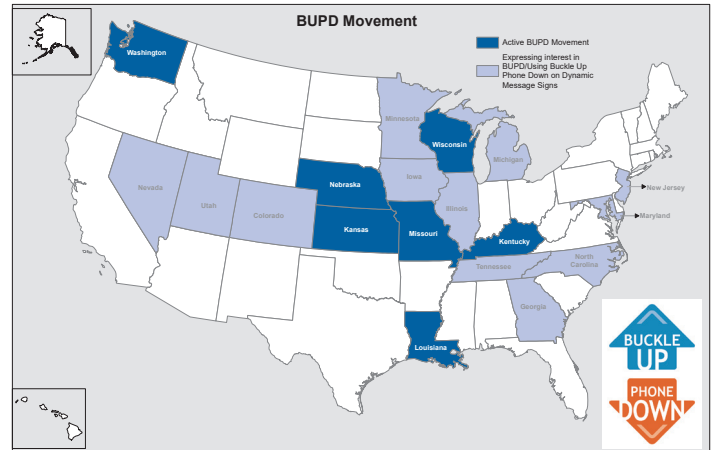
Missouri is on track to see the deadliest year since 2006, a trend that started in 2020.

Fatalities were on a three-year downward trend dating to 2017, but that ended with a sudden spike a year ago. That spike will climb higher by year's end if fatality rates hold. The total will surpass 1,000, a number not seen since 2006's 1,096 highway deaths.

MoDOT crews were witness to the increased dangers first-hand. Truck/trailer-mounted attenuator hits in 2021 surpassed the 2020 total (48) in early September.

## BUPD message continues to grow

This year, MoDOT surpassed 14,000 pledges for the Buckle Up Phone Down safety campaign that was introduced by the department in 2017. Individuals and



businesses continued vowing to always buckle their seat belt and put their cellphones down when driving.

The simple but effective message continues to draw the interest of DOTs throughout the country. Six states are actively using the BUPD message and 12 more have expressed interest or are using the message on digital interstate signs. The National Highway Traffic Safety Administration has announced it will implement the program in two select cities by the end of 2021. The 24-month project will be conducted in tandem with an independent company with the evaluation contract managed by NHTSA's Office of Behavioral Safety Research.

Since distracted driving continues to be the leading cause of traffic crashes, MoDOT invites all other state agencies, individuals and private businesses to join the effort to make Missouri roads safer.



# 2021 National Performance Report Card

A

## Road Conditions

**Current Performance** = 90 percent major highways (5,556 miles) in good condition. Due to the pandemic, condition of minor roads is not available.

**National Ranking** = Missouri had the 7<sup>th</sup> best pavements on the National Highway System. (FHWA Highway Statistics -2019)

A

## Customer Satisfaction

**Current Performance** = 77 percent satisfied customers

**National Ranking** = Missouri trails the highest rated company on the American Customer Satisfaction Index by only 7 percent.

A

## Administrative Costs

**Current Performance** = \$2,340 cost per mile

**National Ranking** = Missouri has the 4<sup>th</sup> lowest administrative cost per mile.

A

## Project Management

**Current Performance** = Missouri road and bridge projects were delivered within 0.7 percent of the award amount and 88 percent were delivered on-time.

**National Ranking** = Not available.

C

## Infrastructure for Business

**Current Performance** = No internal measure

**National Ranking** = A CNBC business study ranks Missouri's infrastructure as the 25<sup>th</sup> best for business.

C

## Congestion (travel time index)

**Current Performance** = Kansas City – 1.10 St. Louis – 1.08

**National Ranking** = Out of 101 urban areas, Kansas City ranked 29<sup>th</sup> and St. Louis ranked at 44<sup>th</sup> for congested areas in the U.S. (Texas Transportation Institute -2020)

D

## Number of Fatalities

**Current Performance** = 987 fatalities

**National Ranking** = Only 19 states experienced more motor vehicle deaths ranking Missouri 31<sup>st</sup>.

F

## Bridge Conditions

**Current Performance** = 9 percent of Missouri bridges in poor condition by deck area.

**National Ranking** = Missouri ranked 41<sup>st</sup> for the percent of bridges in poor condition by deck area. (FHWA Highway Statistics)

F

## Revenue

**Current Performance** = \$55,941 revenue per mile

**National Ranking** = Missouri has the 48<sup>th</sup> lowest revenue per mile. (FHWA Highway Statistics)

F

## Employee Turnover

**Current Performance** = 13.16 percent

**National Ranking** = Not available; However, **Stretch Target** = 6 percent. (Price Waterhouse Cooper's Saratoga Institute benchmark data)

### RANKINGS

1-10 = A

11-20 = B

21-30 = C

31-40 = D

41-50 = F

Last updated October 2021

