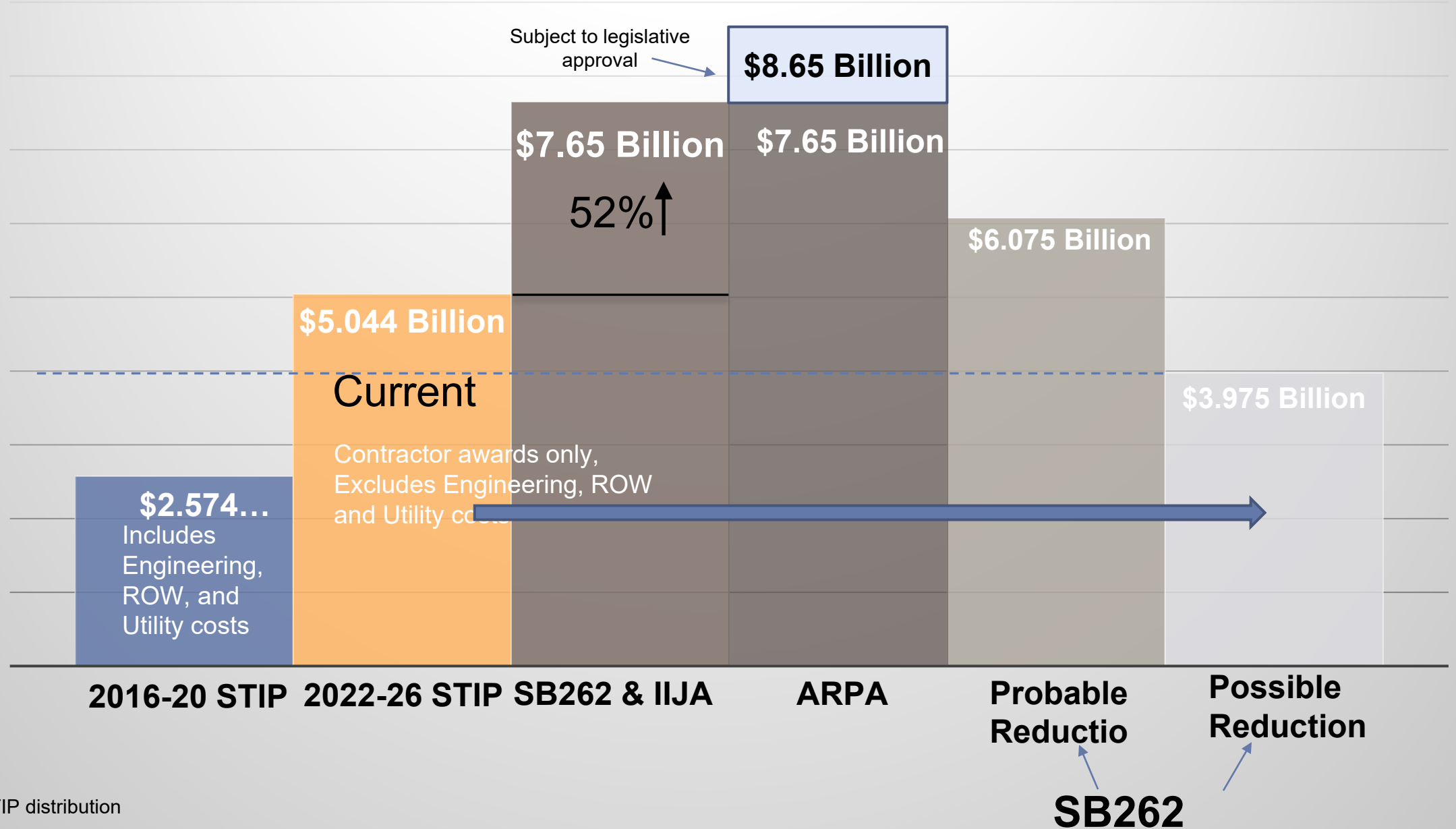


Unfunded Needs Public Meeting

2021 Update

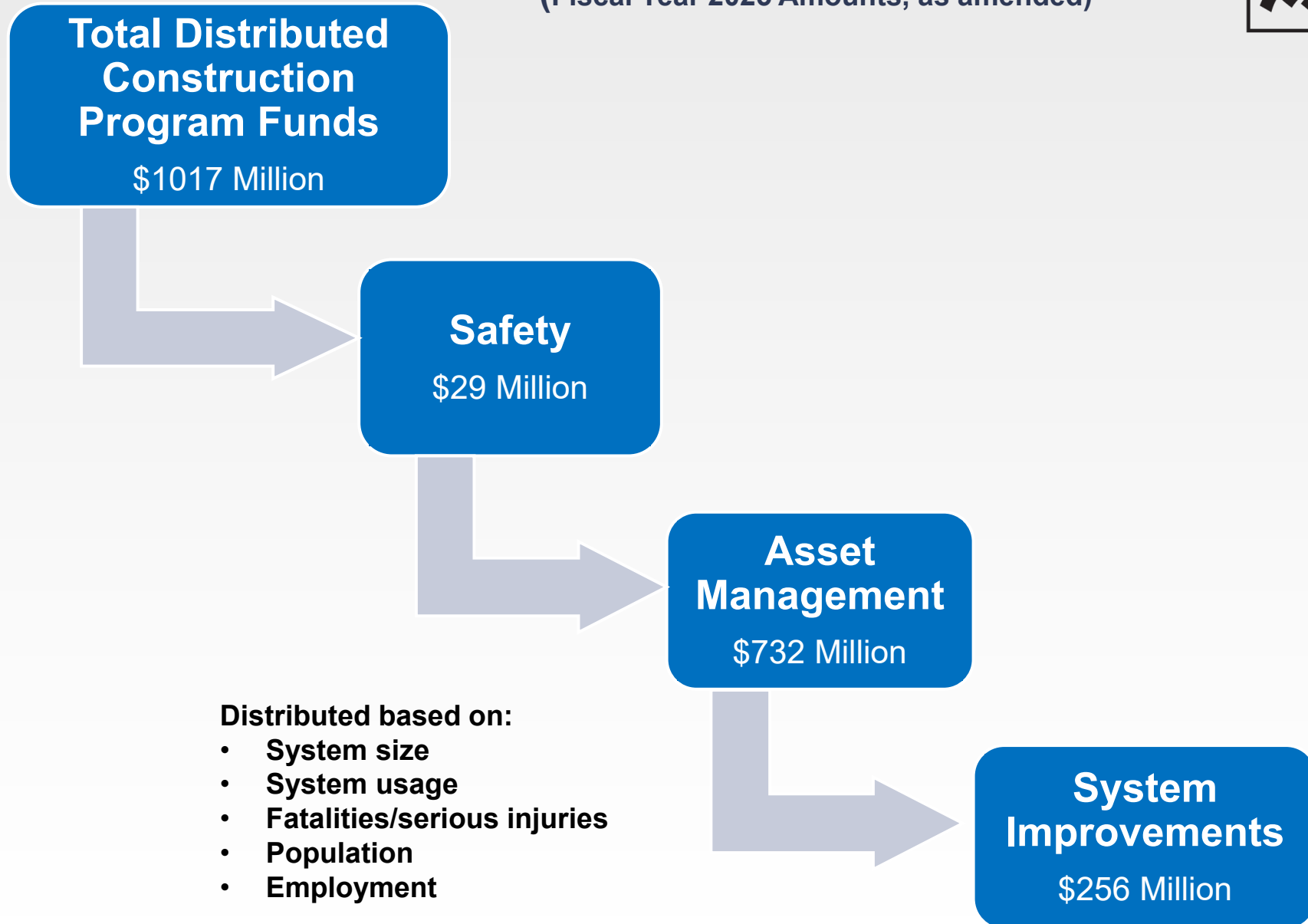


2022-2026 STIP Contractor Awards and Future Funding Strategies



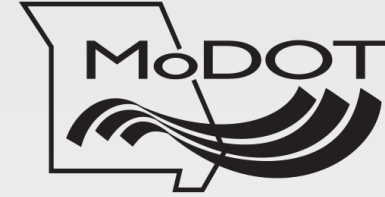
Final SFY2022-2026 STIP

(Fiscal Year 2025 Amounts, as amended)



Potential 2023-2027 STIP SB262 & IIJA

(Fiscal Year 2025 Amounts)



**Total Distributed
Construction
Program Funds**

\$1,477 Million



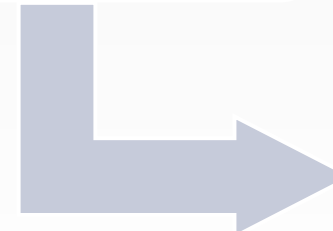
Safety

\$29 Million



**Asset
Management**

\$732 Million



**System
Improvements**

\$716 Million

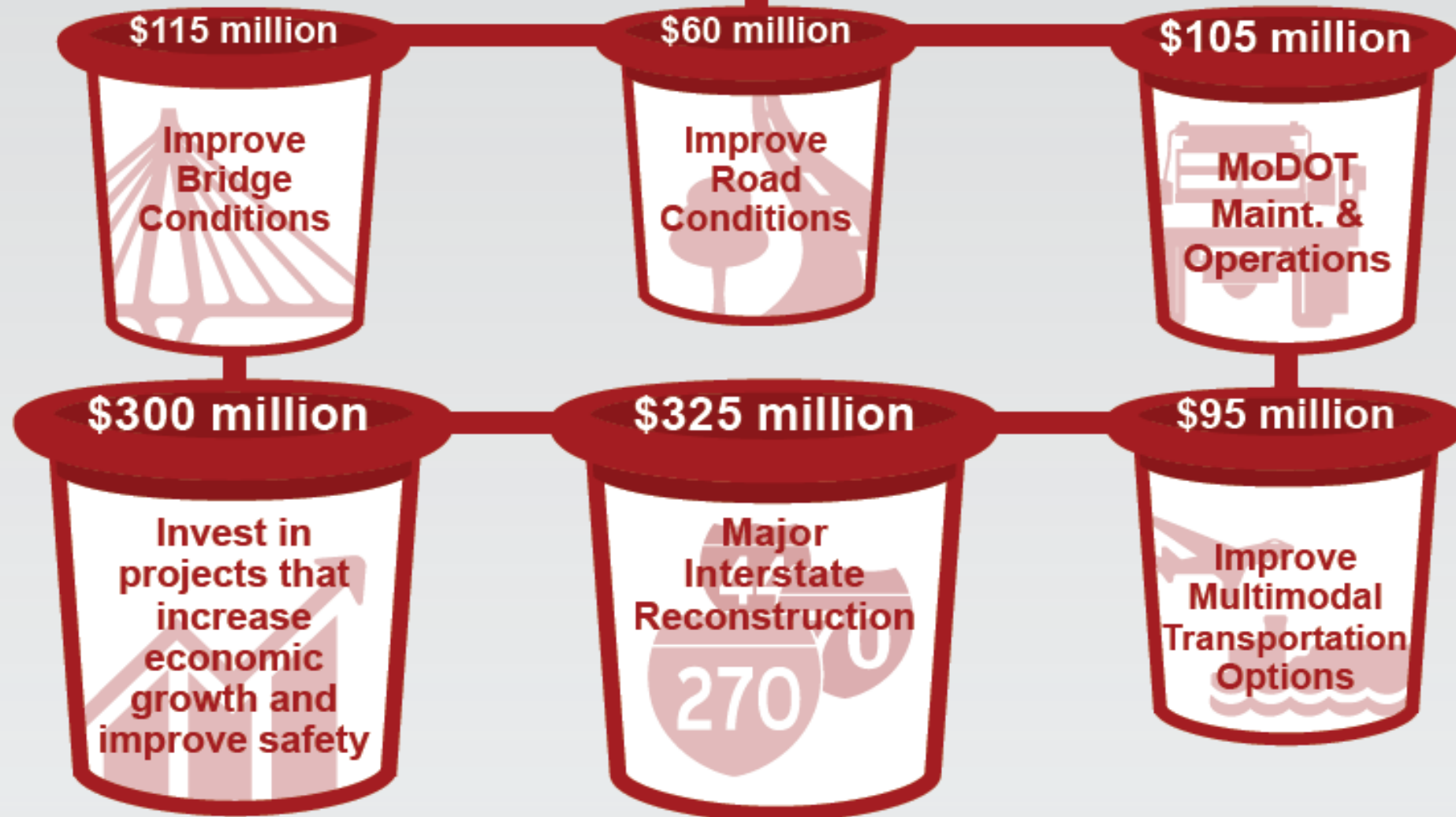
Distributed based on:

- **System size**
- **System usage**
- **Fatalities/serious injuries**
- **Population**
- **Employment**

Subject to MHTC approval

HIGH-PRIORITY UNFUNDED ANNUAL TRANSPORTATION NEEDS

\$1 billion



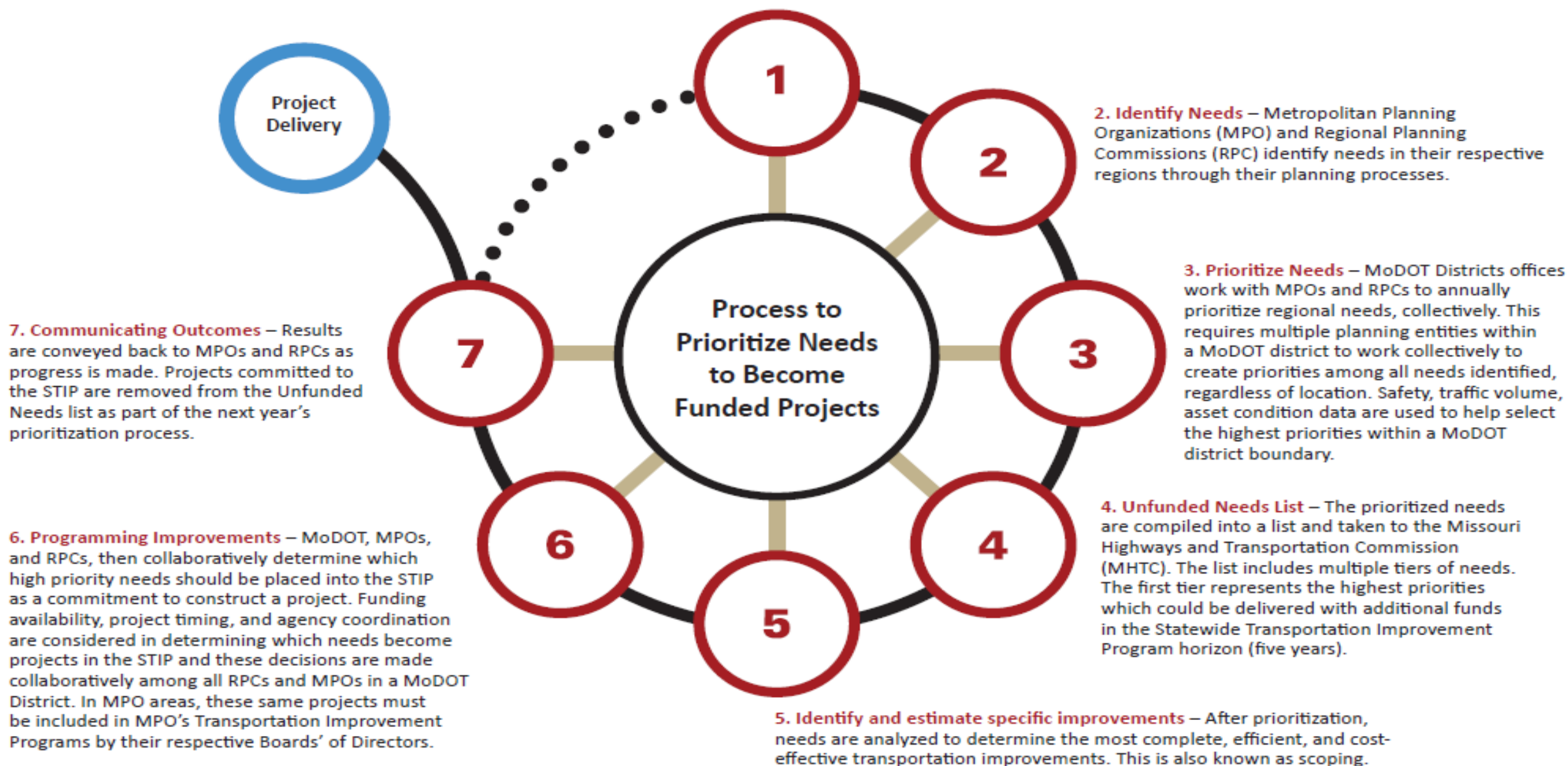
HIGH-PRIORITY UNFUNDED NEEDS

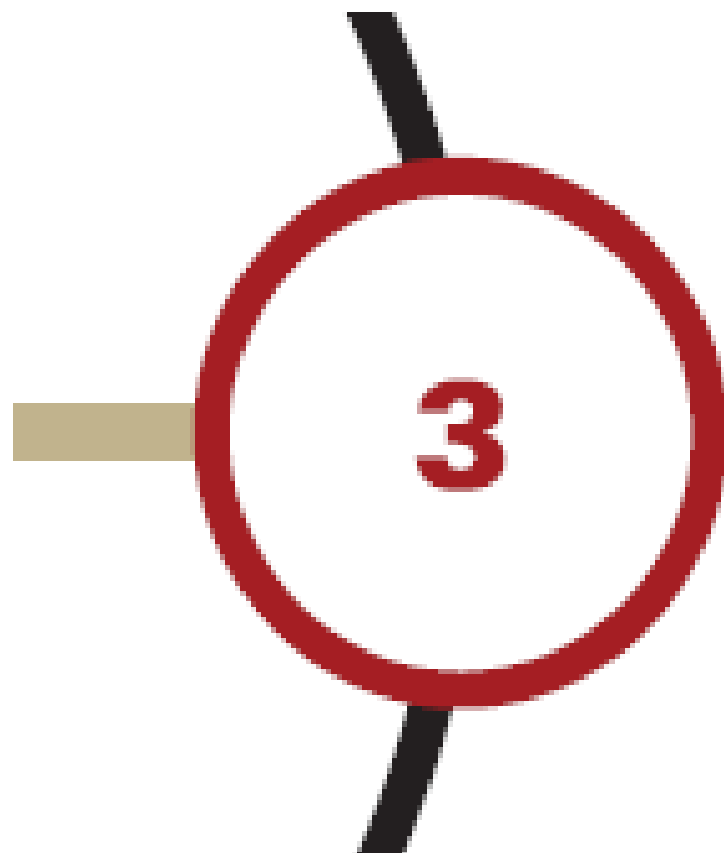


Nov. 2021



1. Establish a vision – MoDOT’s vision for its transportation future is best captured by the five goals established by Missourians in the Long-Range Transportation Plan. In priority order, they are: 1) Take care of the transportation system; 2) Keep all travelers safe; 3) Invest in projects that spur economic growth and create jobs; 4) Give Missourians better transportation choices; and 5) Improve reliability and reduce congestion.





3. Prioritize Needs – MoDOT District offices work with MPOs and RPCs to annually prioritize regional needs, collectively. This requires multiple planning entities within a MoDOT district to work collectively to create priorities among all needs identified, regardless of location. Safety, traffic volume, asset condition data are used to help select the highest priorities within a MoDOT district boundary.



Southeast District – Tier 1

High Priority Unfunded Road and Bridge Needs

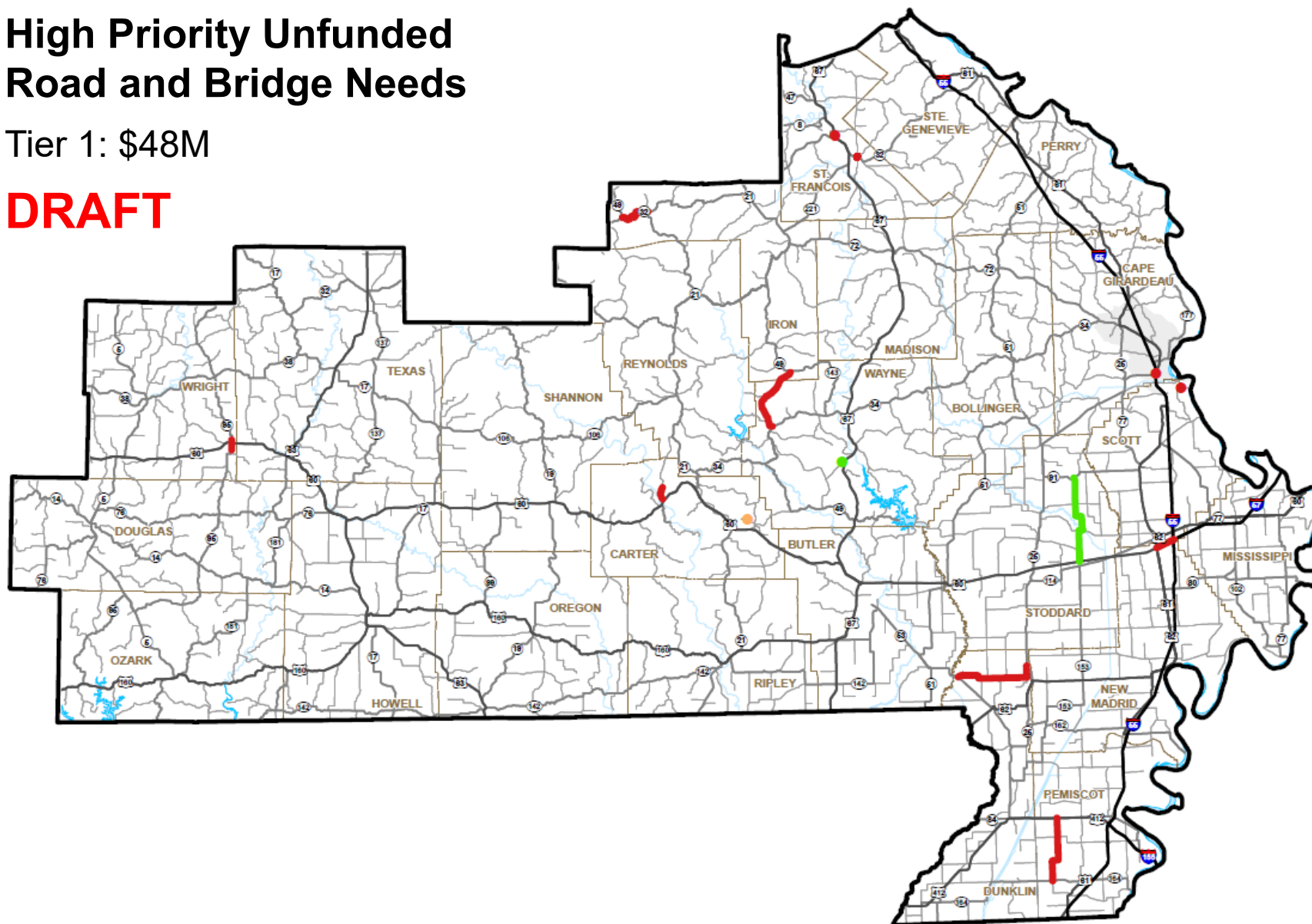
Tier 1: \$48M

DRAFT



Legend:

- Improve Bridge Conditions
- Improve Road Conditions
- Increase Economic Growth and Improve Safety
- Major Interstate Reconstruction

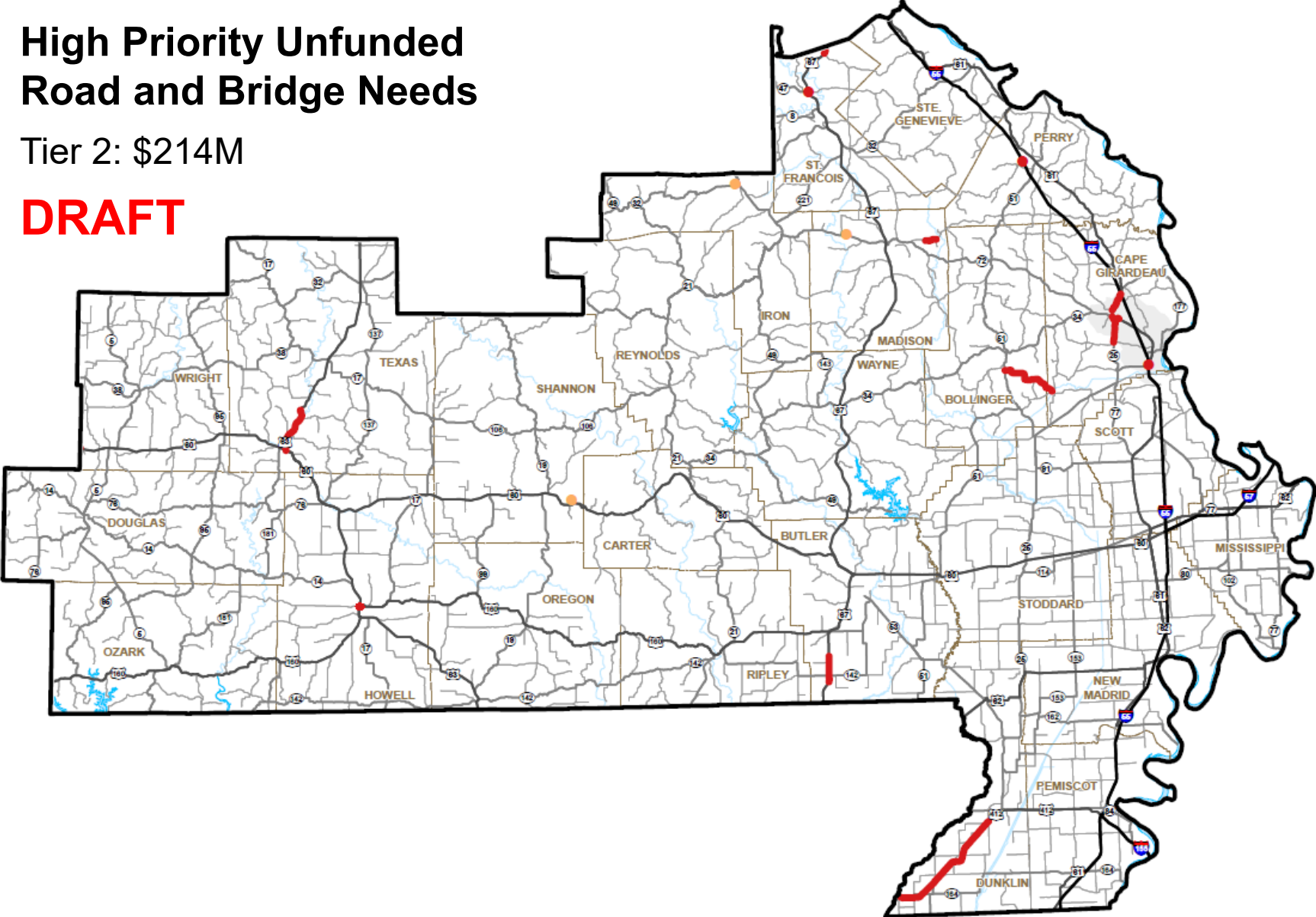


Southeast District – Tier 2

High Priority Unfunded Road and Bridge Needs

Tier 2: \$214M

DRAFT



- Legend:**
- Improve Bridge Conditions
 - Improve Road Conditions
 - Increase Economic Growth and Improve Safety
 - Major Interstate Reconstruction

Southeast District – Tier 3

High Priority Unfunded Road and Bridge Needs

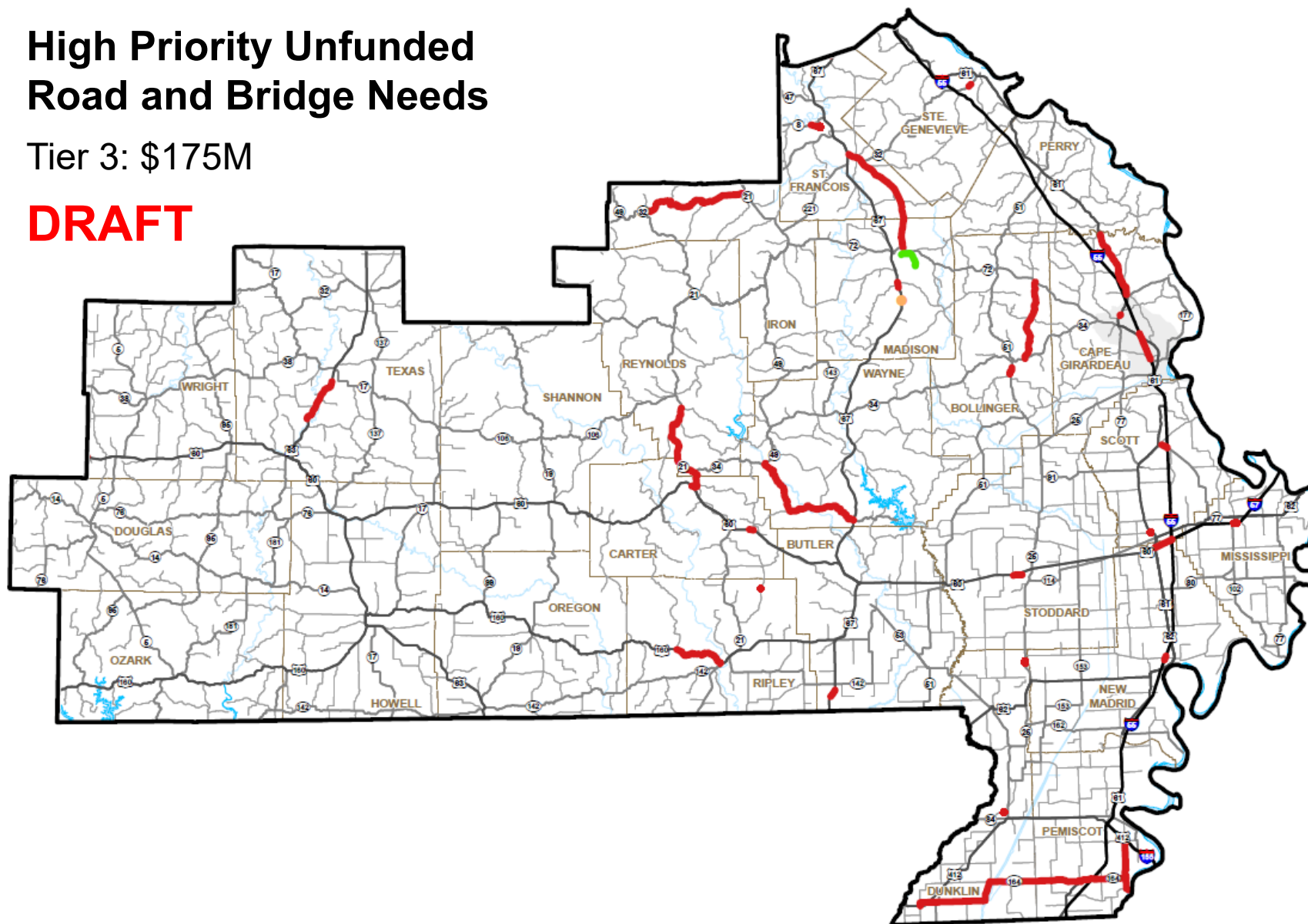
Tier 3: \$175M

DRAFT



Legend:

-  Improve Bridge Conditions
-  Improve Road Conditions
-  Increase Economic Growth and Improve Safety
-  Major Interstate Reconstruction



Southeast District – Multimodal


High Priority Unfunded
Multimodal Needs

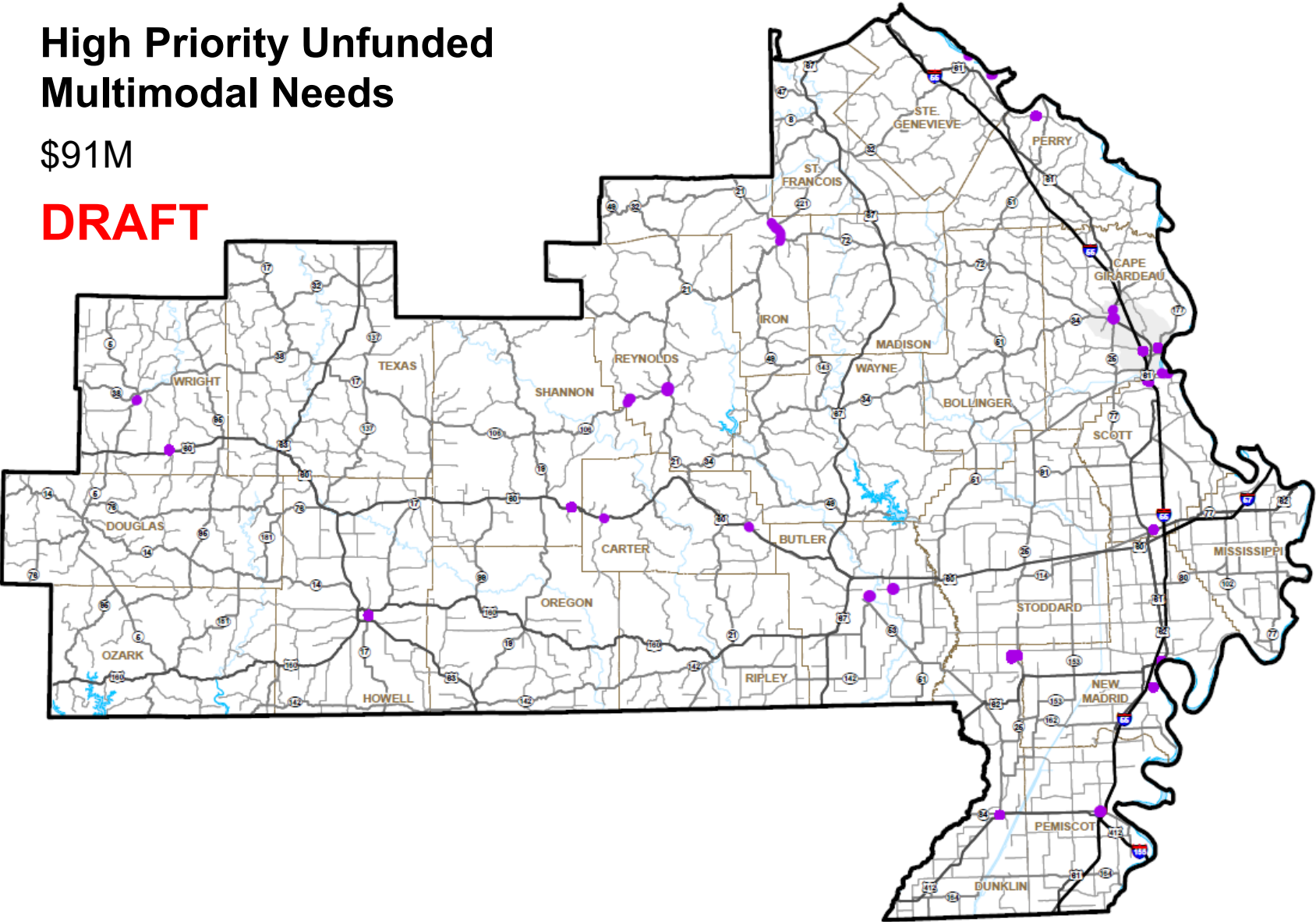
\$91M

DRAFT



Legend:

 Improve Multimodal Transportation Options



Southeast Summary



Tier	Improve Bridge Conditions	Improve Road Conditions	Major Interstate Reconstruction	Increase Economic Growth and Improve Safety	Improve Multimodal Transportation Options	Totals
One	919	2,541		44,081		\$47,541
Two	4,732			208,776		\$213,508
Three	1,091	346		173,946		\$175,383
Multimodal					91,403	\$91,403
Total	\$6,742	\$2,887	\$ —	\$ 426,803	\$91,403	\$527,835

(Amounts in \$1,000)

Statewide Summary



TOTALS BY PRIORITY

DISTRICT	TIER 1	TIER 2	TIER 3	MULTIMODAL	MAJOR BRIDGE	STATEWIDE	GRAND TOTAL
NW	\$24,364	\$97,518	\$97,751	\$47,024	\$106,070	-	\$372,727
NE	\$22,803	\$95,295	\$96,258	\$47,136	\$54,000	-	\$315,492
KCR	\$15,400	\$65,979	\$56,270	\$28,186	\$57,060	-	\$222,895
KCU	\$100,970	\$372,300	\$375,792	\$182,000	\$50,160	-	\$1,081,222
CD	\$62,000	\$213,799	\$236,837	\$117,165	-	-	\$629,801
SL	\$195,900	\$779,800	\$872,520	\$374,321	\$91,800	-	\$2,314,341
SWR	\$47,642	\$191,899	\$193,146	\$95,905	-	-	\$528,592
SWU	\$26,758	\$111,592	\$108,167	\$52,959	-	-	\$299,476
SE	\$47,541	\$213,508	\$175,383	\$91,403	\$67,700	-	\$595,535
STATEWIDE	-	-	-	-	-	\$1,635,800	\$1,635,800
REMAINING UNFUNDED NEEDS							\$2,004,120
GRAND TOTAL	\$543,378	\$2,141,690	\$2,212,124	\$1,036,099	\$426,790	\$1,635,800	\$10,000,000

Statewide Summary



TOTALS BY TYPE

DISTRICT	IMPROVE BRIDGE CONDITIONS	IMPROVE ROAD CONDITIONS	INCREASE ECONOMIC GROWTH AND IMPROVE SAFETY	MAJOR INTERSTATE RECONSTRUCTION	MULTIMODAL	GRAND TOTAL
NW	\$56,370	\$62,232	\$54,250	\$46,781	\$47,024	\$266,657
NE	\$14,682	\$19,521	\$180,153	-	\$47,136	\$261,492
KCR	\$15,400	\$83,014	\$39,235	-	\$28,186	\$165,835
KCU	-	\$199,300	\$649,762	-	\$182,000	\$1,031,062
CD	-	-	\$454,023	\$58,613	\$117,165	\$629,801
SL	\$685,200	\$76,500	\$399,420	\$687,100	\$374,321	\$2,222,541
SWR	\$1,000	\$47,360	\$333,112	\$51,215	\$95,905	\$528,592
SWU	-	\$49,860	\$169,055	\$27,602	\$52,959	\$299,476
SE	\$6,742	\$2,887	\$426,803	-	\$91,403	\$527,835
STATEWIDE	-	\$25,000	\$90,800	\$1,500,000	\$20,000	\$1,635,800
MAJOR BRIDGE	\$426,790	-	-	-	-	\$426,790
REMAINING UNFUNDED NEEDS						\$2,004,120
GRAND TOTAL	\$1,206,184	\$565,674	\$2,796,613	\$2,371,311	\$1,056,099	\$10,000,000

To view the document and submit a comment:

www.modot.org/unfundedneeds

