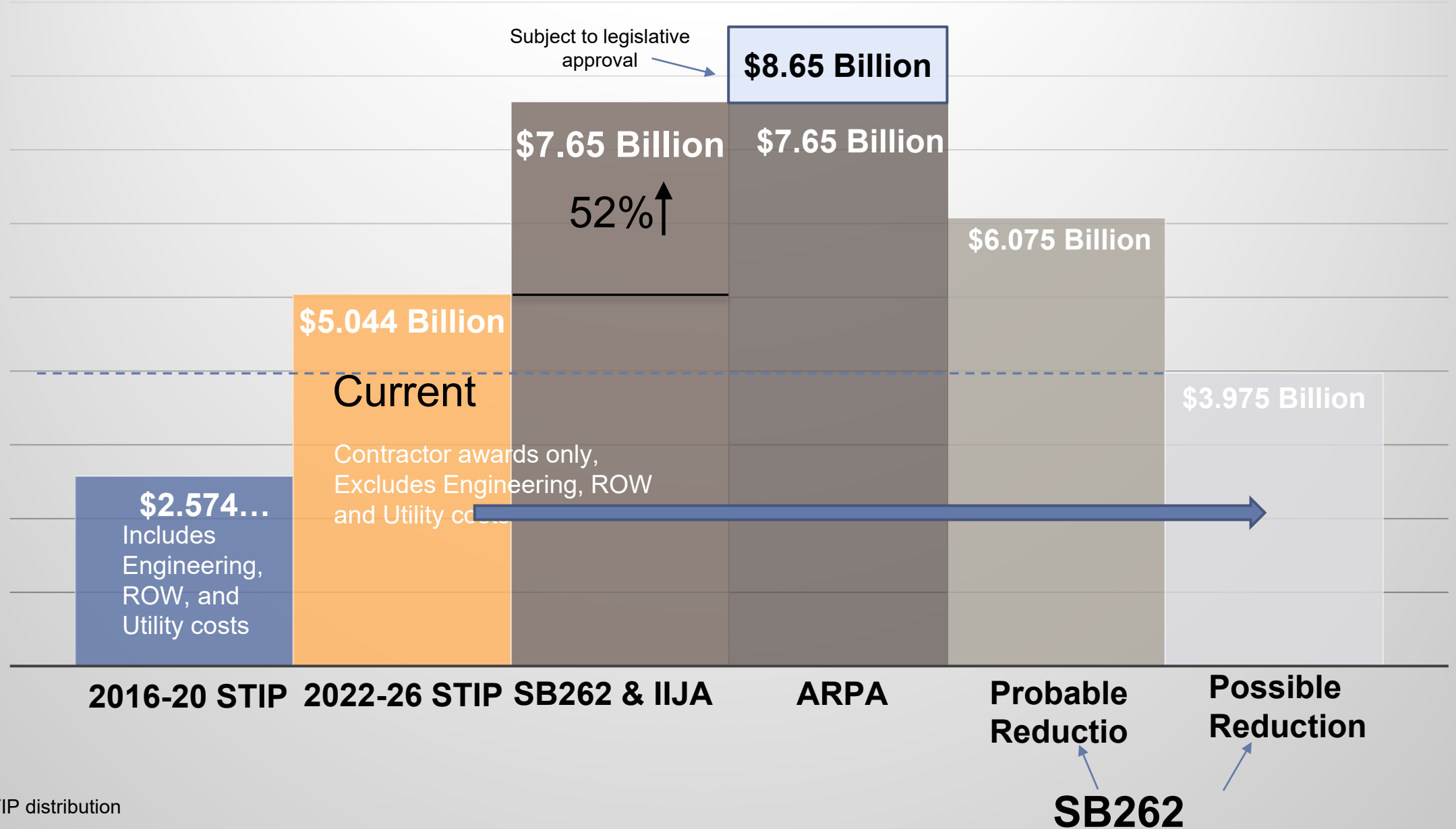


Unfunded Needs Public Meeting 2021 Update



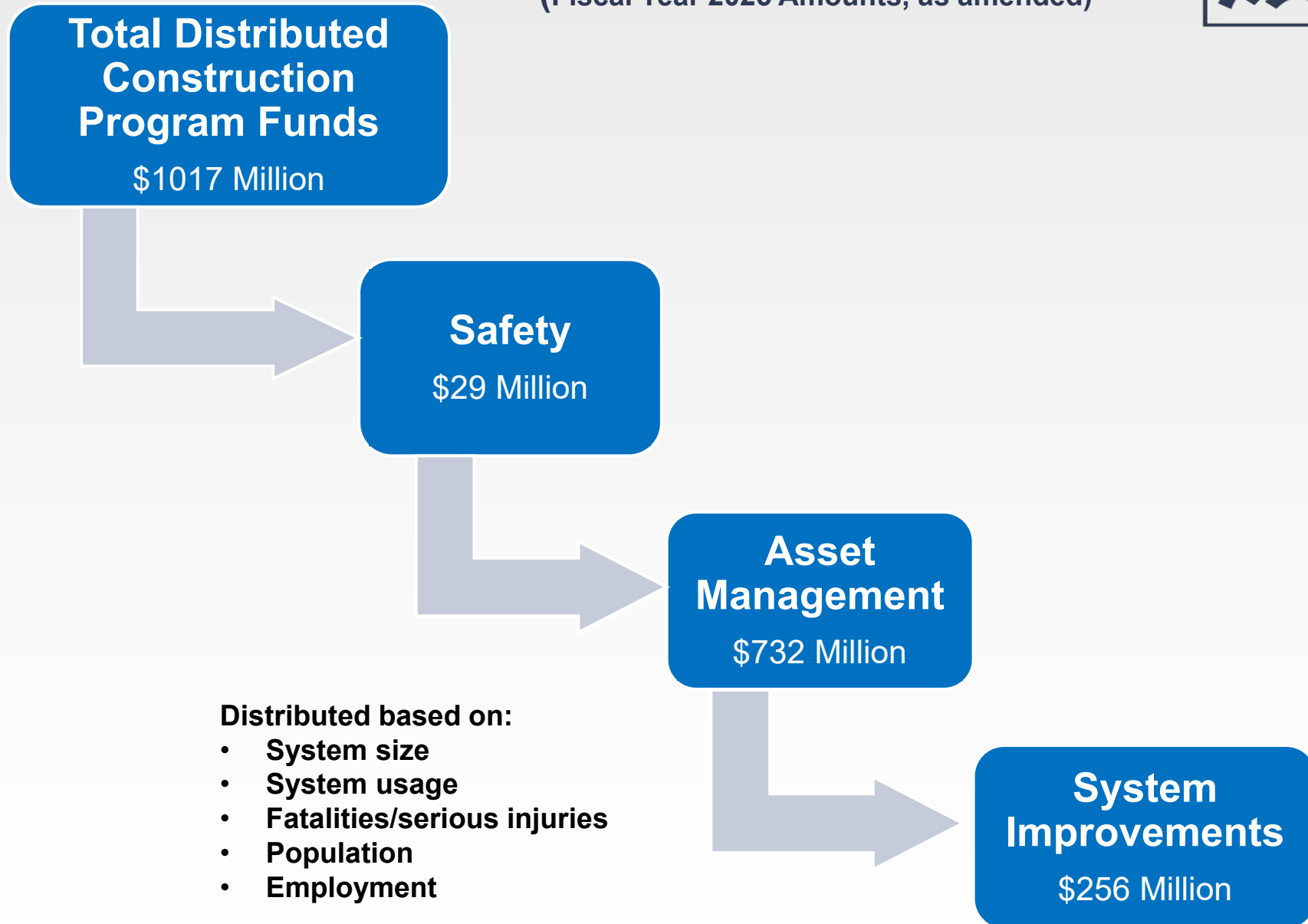
2022-2026 STIP Contractor Awards and Future Funding Strategies



*Estimated STIP distribution

Final SFY2022-2026 STIP

(Fiscal Year 2025 Amounts, as amended)



Potential 2023-2027 STIP SB262 & IIJA

(Fiscal Year 2025 Amounts)



**Total Distributed
Construction
Program Funds**

\$1,477 Million



Safety

\$29 Million



**Asset
Management**

\$732 Million



**System
Improvements**

\$716 Million

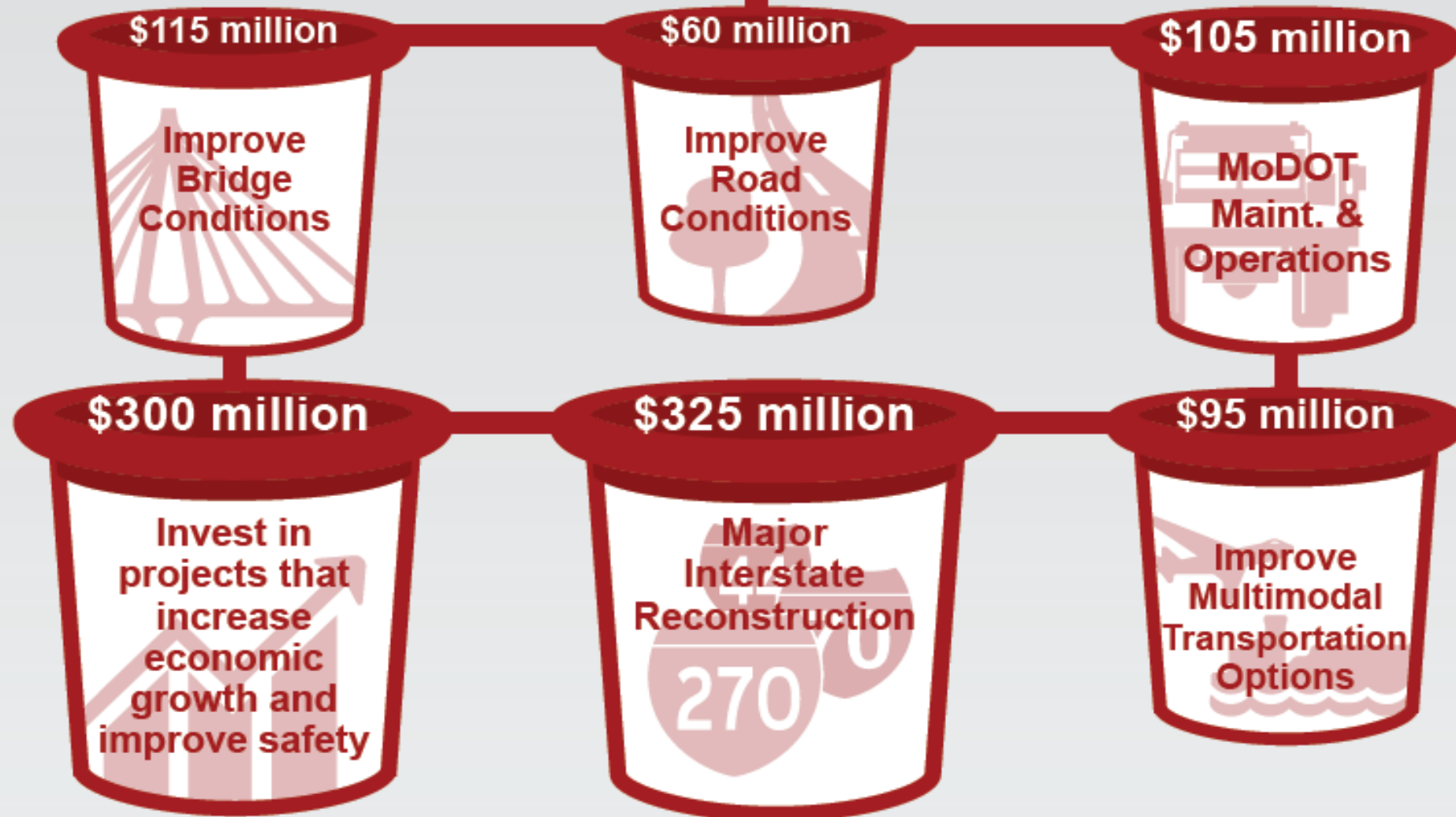
Distributed based on:

- **System size**
- **System usage**
- **Fatalities/serious injuries**
- **Population**
- **Employment**

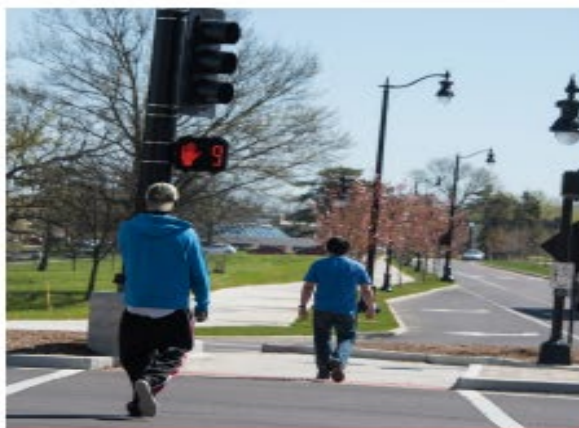
Subject to MHTC approval

HIGH-PRIORITY UNFUNDED ANNUAL TRANSPORTATION NEEDS

\$1 billion



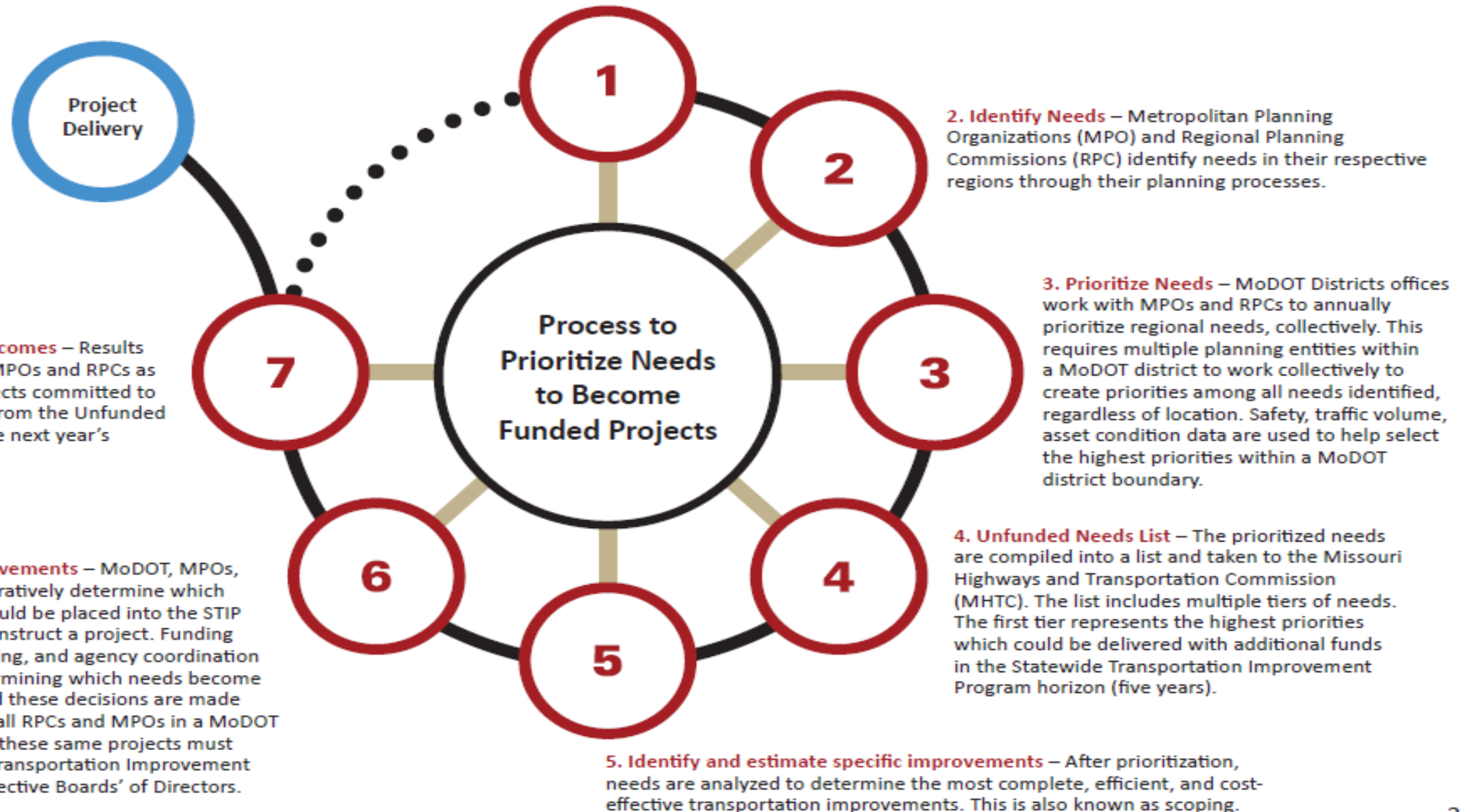
HIGH-PRIORITY UNFUNDED NEEDS



Nov. 2021



1. Establish a vision – MoDOT’s vision for its transportation future is best captured by the five goals established by Missourians in the Long-Range Transportation Plan. In priority order, they are: 1) Take care of the transportation system; 2) Keep all travelers safe; 3) Invest in projects that spur economic growth and create jobs; 4) Give Missourians better transportation choices; and 5) Improve reliability and reduce congestion.



A large, stylized number "3" inside a white circle with a thick red border. The circle is positioned on the left side of the slide. A thick black line curves around the top and right of the circle. A horizontal gold bar extends from the left edge of the circle. A red curved shape is at the bottom left of the circle.

3

3. Prioritize Needs – MoDOT Districts offices work with MPOs and RPCs to annually prioritize regional needs, collectively. This requires multiple planning entities within a MoDOT district to work collectively to create priorities among all needs identified, regardless of location. Safety, traffic volume, asset condition data are used to help select the highest priorities within a MoDOT district boundary.



Southwest District – Tier 1



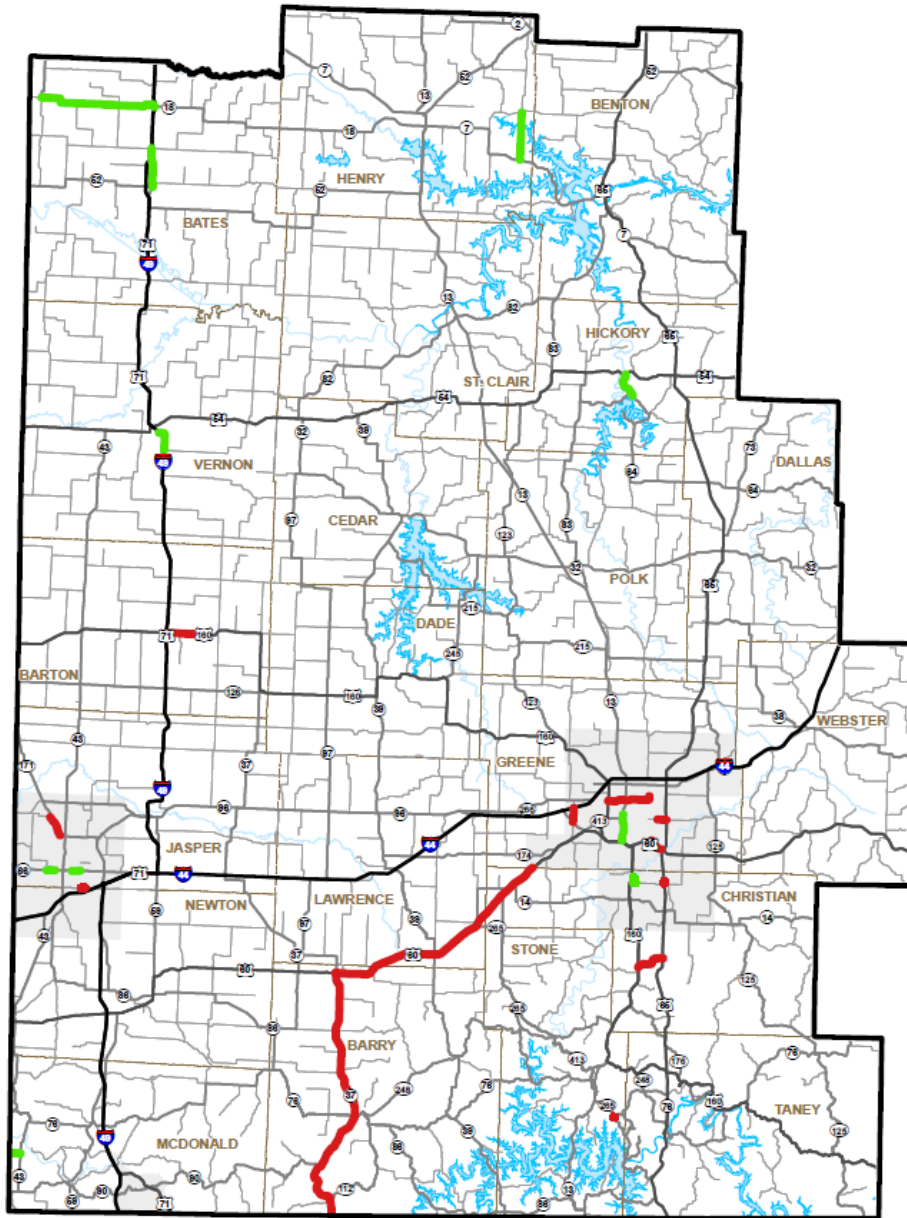
High Priority Unfunded Road and Bridge Needs

SOUTHWEST
District

Tier 1 \$74M

DRAFT

- Improve Bridge Conditions
- Improve Road Conditions
- Increase Economic Growth and Improve Safety
- Major Interstate Reconstruction



Southwest Highlight Unfunded Needs

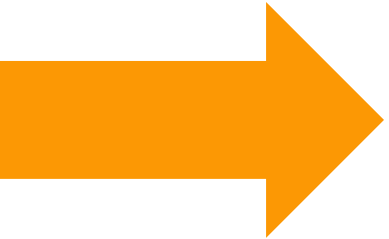


Southwest Rural

- 32nd Street (Rte. FF) Railroad Overpass, Joplin
- Pavement improvements on Route 18 from Adrian to Butler, and on Loop 49 in Butler
- Routes 60/37 intermittent intersection improvements from Republic to Monett and Monett to Arkansas
- Route EE improvements from Rte. 160 to Rte. 65, Highlandville

Southwest Urban (Springfield area only)

- Kansas Expressway (Rte. 13) Phase I Improvements, Springfield
- Route CC from Fremont Road to 22nd Street, Ozark
- Route MM from I-44 to Rte. 360, Republic



Southwest – Tier 2



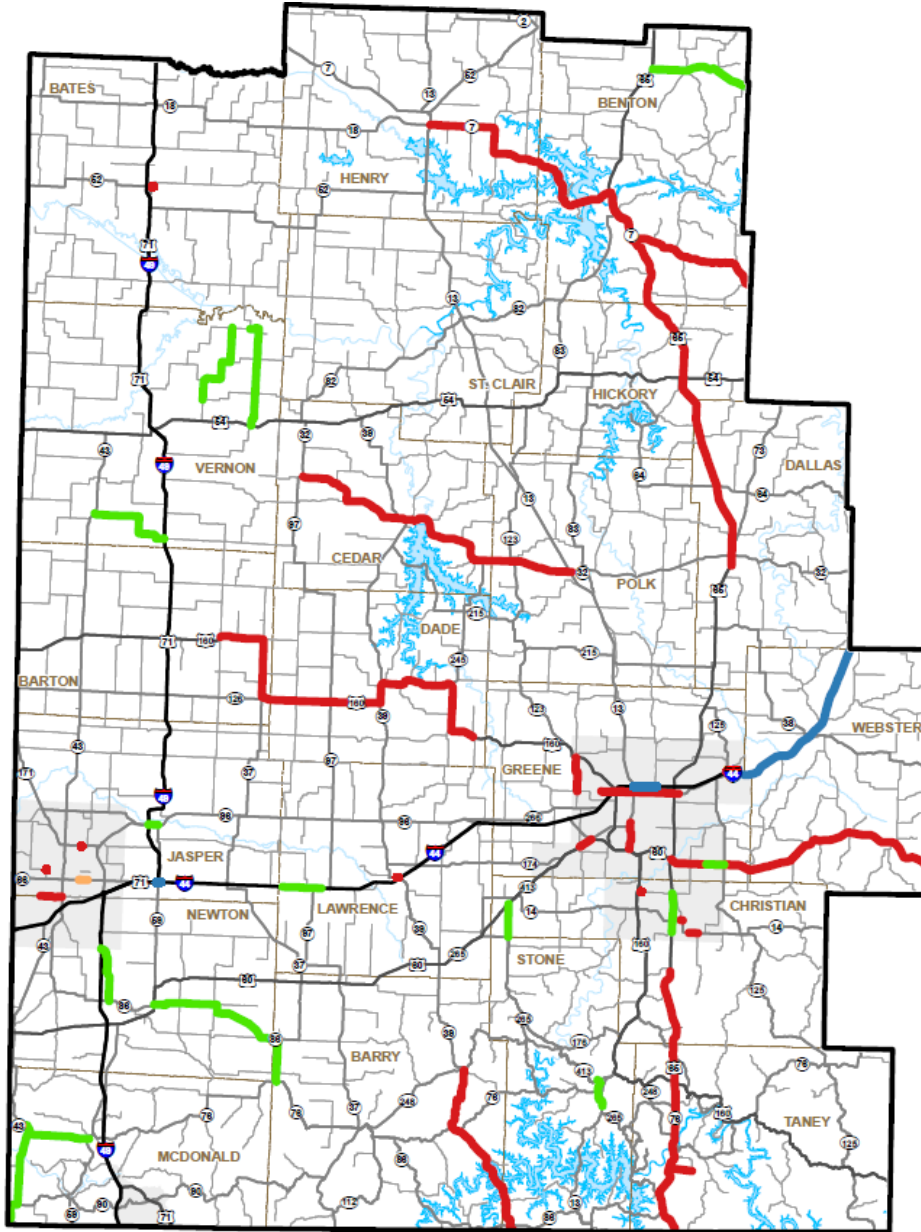
High Priority Unfunded
Road and Bridge Needs

SOUTHWEST
District

Tier 2 \$302M

DRAFT

- Improve Bridge Conditions
- Improve Road Conditions
- Increase Economic Growth and Improve Safety
- Major Interstate Reconstruction



Southwest – Tier 3



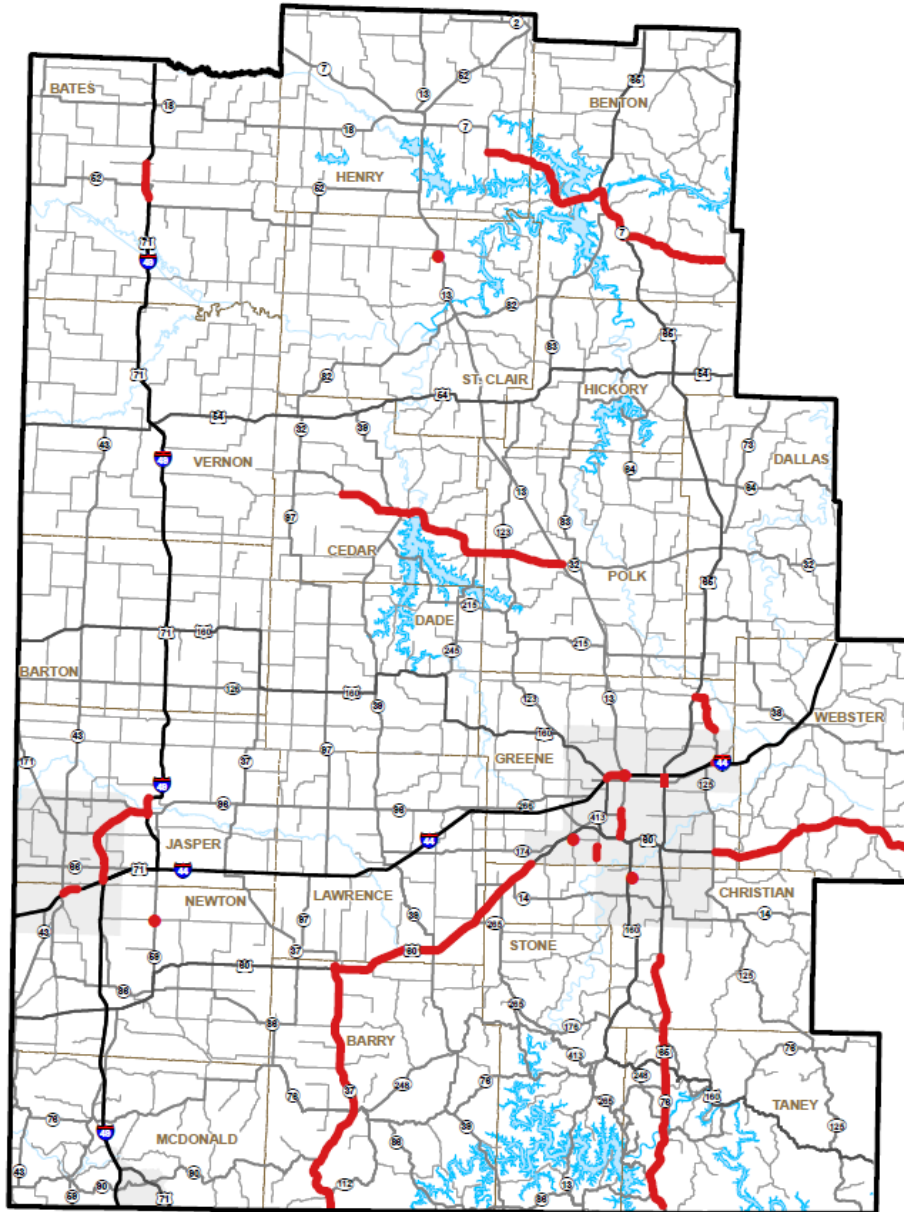
High Priority Unfunded Road and Bridge Needs

SOUTHWEST
District

Tier 3 \$301M

DRAFT

- Improve Bridge Conditions
- Improve Road Conditions
- Increase Economic Growth and Improve Safety
- Major Interstate Reconstruction



Southwest – Multimodal



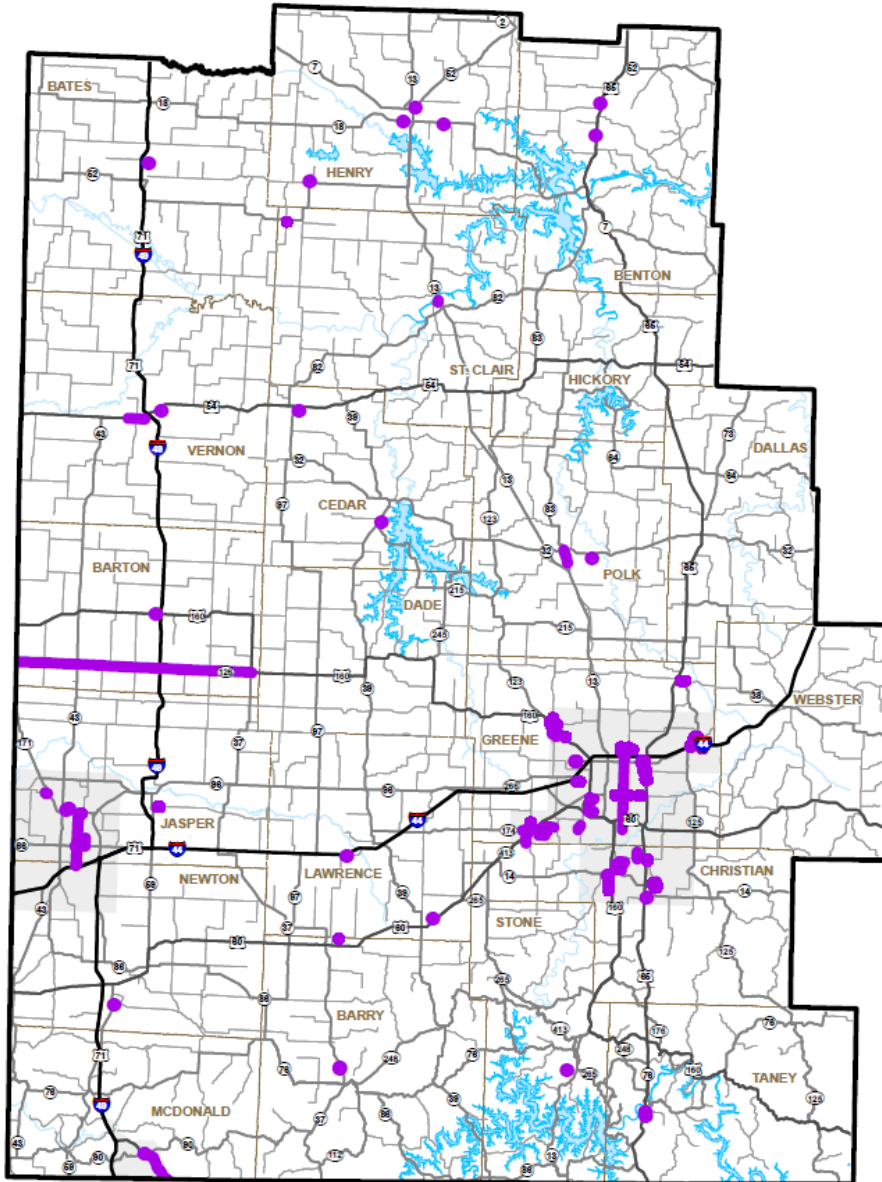
High Priority Unfunded Multimodal Needs

SOUTHWEST
District

\$149M

DRAFT

Improve Multimodal
Transportation Options



Southwest Summary



Southwest Rural

Tier	Improve Bridge Conditions	Improve Road Condition	Major Interstate Reconstruction	Increase Economic Growth and Improve Safety	Improve Multimodal Transportation Options	Totals
One		18,231		29,411		\$47,642
Two	1,000	29,129	51,215	110,555		\$191,899
Three				193,146		\$193,146
Multimodal					95,905	\$95,905
Total	\$1,000	\$47,360	\$51,215	\$333,112	\$95,905	\$528,592

Southwest Urban

Tier	Improve Bridge Conditions	Improve Road Condition	Major Interstate Reconstruction	Increase Economic Growth and Improve Safety	Improve Multimodal Transportation Options	Totals
One		10,500		16,258		\$26,758
Two		39,360	27,602	44,630		\$111,592
Three				108,167		\$108,167
Multimodal					52,959	\$52,959
Total	\$0	\$49,860	\$27,602	\$169,055	\$52,959	\$299,476

Statewide Summary



TOTALS BY PRIORITY

DISTRICT	TIER 1	TIER 2	TIER 3	MULTIMODAL	MAJOR BRIDGE	STATEWIDE	GRAND TOTAL
NW	\$24,364	\$97,518	\$97,751	\$47,024	\$106,070	-	\$372,727
NE	\$22,803	\$95,295	\$96,258	\$47,136	\$54,000	-	\$315,492
KCR	\$15,400	\$65,979	\$56,270	\$28,186	\$57,060	-	\$222,895
KCU	\$100,970	\$372,300	\$375,792	\$182,000	\$50,160	-	\$1,081,222
CD	\$62,000	\$213,799	\$236,837	\$117,165	-	-	\$629,801
SL	\$195,900	\$779,800	\$872,520	\$374,321	\$91,800	-	\$2,314,341
SWR	\$47,642	\$191,899	\$193,146	\$95,905	-	-	\$528,592
SWU	\$26,758	\$111,592	\$108,167	\$52,959	-	-	\$299,476
SE	\$47,541	\$213,508	\$175,383	\$91,403	\$67,700	-	\$595,535
STATEWIDE	-	-	-	-	-	\$1,635,800	\$1,635,800
REMAINING UNFUNDED NEEDS							\$2,004,120
GRAND TOTAL	\$543,378	\$2,141,690	\$2,212,124	\$1,036,099	\$426,790	\$1,635,800	\$10,000,000

Statewide Summary



TOTALS BY TYPE

DISTRICT	IMPROVE BRIDGE CONDITIONS	IMPROVE ROAD CONDITIONS	INCREASE ECONOMIC GROWTH AND IMPROVE SAFETY	MAJOR INTERSTATE RECONSTRUCTION	MULTIMODAL	GRAND TOTAL
NW	\$56,370	\$62,232	\$54,250	\$46,781	\$47,024	\$266,657
NE	\$14,682	\$19,521	\$180,153	-	\$47,136	\$261,492
KCR	\$15,400	\$83,014	\$39,235	-	\$28,186	\$165,835
KCU	-	\$199,300	\$649,762	-	\$182,000	\$1,031,062
CD	-	-	\$454,023	\$58,613	\$117,165	\$629,801
SL	\$685,200	\$76,500	\$399,420	\$687,100	\$374,321	\$2,222,541
SWR	\$1,000	\$47,360	\$333,112	\$51,215	\$95,905	\$528,592
SWU	-	\$49,860	\$169,055	\$27,602	\$52,959	\$299,476
SE	\$6,742	\$2,887	\$426,803	-	\$91,403	\$527,835
STATEWIDE	-	\$25,000	\$90,800	\$1,500,000	\$20,000	\$1,635,800
MAJOR BRIDGE	\$426,790	-	-	-	-	\$426,790
REMAINING UNFUNDED NEEDS						\$2,004,120
GRAND TOTAL	\$1,206,184	\$565,674	\$2,796,613	\$2,371,311	\$1,056,099	\$10,000,000

To view the document and submit a comment:

www.modot.org/unfundedneeds

