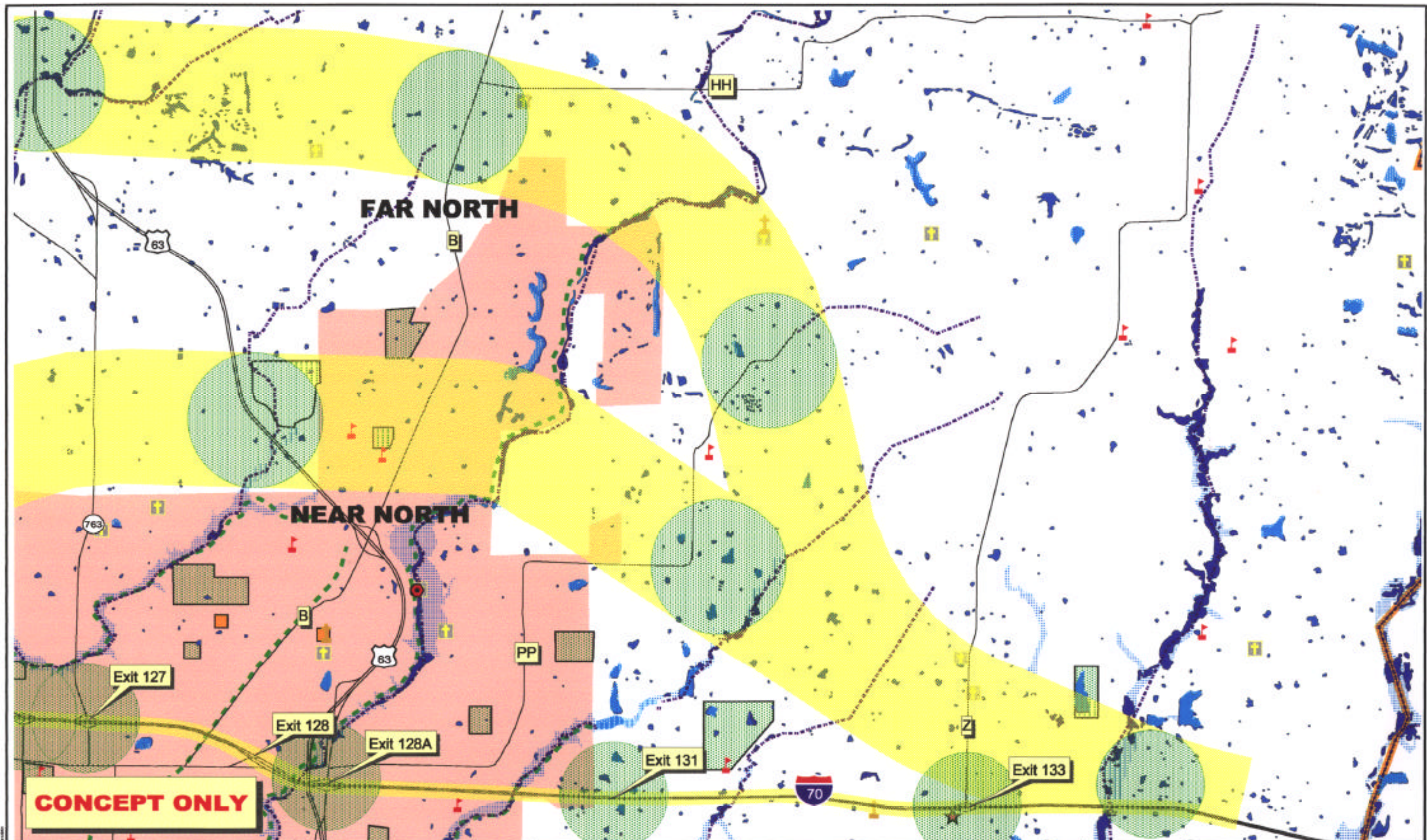


CONCEPT ONLY



<ul style="list-style-type: none"> Relocation Corridor Concept Potential Interchange Roads County Boundary City Limits 	<ul style="list-style-type: none"> T & E Species Sites Hazardous Material Locations NRHP Archeological Sites NRHP Structure Sites Churches Cemeteries 	<ul style="list-style-type: none"> Hospitals Schools Natural Features Sites Historical Sites City/County Parks City/County Parks 	<ul style="list-style-type: none"> Conservation Areas DNR State Parks Katy Trail (DNR State Park) Mark Twain Forest Properties Mark Twain Forest Boundary 	<ul style="list-style-type: none"> National Wildlife Refuge Floodplains Wetland Areas Lakes Rivers
---	---	--	--	---



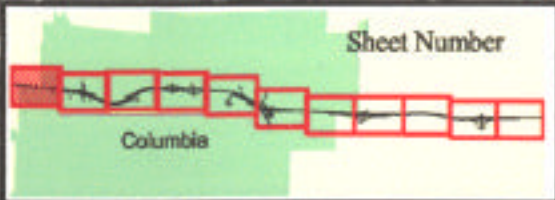
CONCEPT ONLY



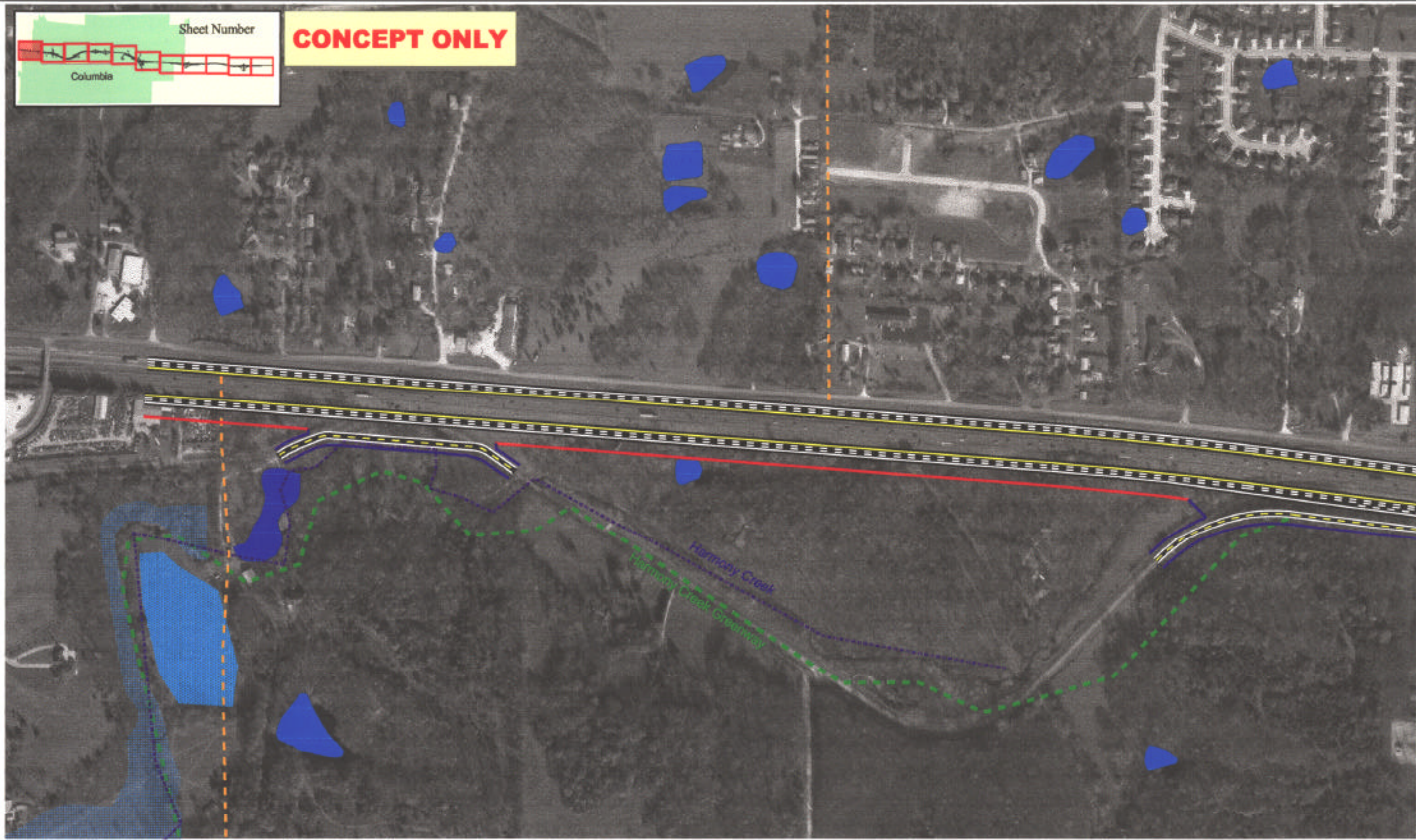
LEGEND	
	Relocation Corridor Concept
	Potential Interchange
	Roads
	County Boundary
	City Limits
	T & E Species Site
	Hazardous Material Locations
	NRHP Archaeological Sites
	NRHP Structure Sites
	Churches
	Cemeteries
	Hospitals
	Schools
	Natural Features Sites
	Historical Sites
	City/County Parks
	City/County Parks
	Conservation Areas
	DNR State Parks
	Katy Trail (DNR State Park)
	Mark Twain Forest Properties
	Mark Twain Forest Boundary
	National Wildlife Refuge
	Woodplains
	Wetland Areas
	Lakes
	Rivers

Relocation Corridor Options
Columbia

2 OF 2



CONCEPT ONLY



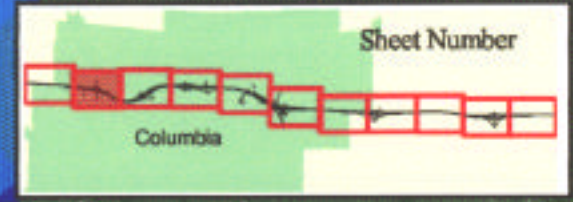
Scale: 1" = 400 feet

- | | | | | | |
|--|--|---|---|---|---|
| <ul style="list-style-type: none"> Fully Limited Access R/W Normal R/W Limited Access R/W Median Barrier County Boundary City Boundary | <ul style="list-style-type: none"> T & E Species Sites Hazardous Material Locations NRHP Archaeological Sites NRHP Structure Sites Churches Cemeteries | <ul style="list-style-type: none"> Hospitals Schools City/County Parks City/County Parks Conservation Areas DNR State Parks | <ul style="list-style-type: none"> Katy Trail (DNR State Park) Mark Twain Forest Properties Mark Twain Forest Boundary Natural Features Sites Historical Sites National Wildlife Refuge | <ul style="list-style-type: none"> Lakes Floodplains Palustrine Vegetative Wetlands Palustrine Upland Ponds Riverine Lacustrine Wetland Areas | <ul style="list-style-type: none"> Rivers |
|--|--|---|---|---|---|

TITLE
**Widening Improvements
 to Existing Corridor
 Columbia**

SHEET
1 OF 11

CONCEPT ONLY



Stadium Blvd

Exit 124

740

Casmo Recreation Area & Golf Course

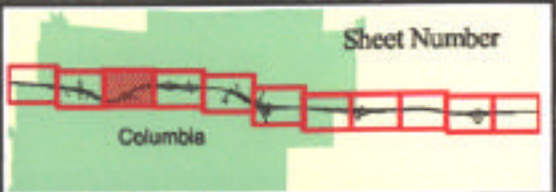


- | | | | | | |
|--------------------------|------------------------------|--------------------|------------------------------|--------------------------------|---------------|
| Fully Limited Access R/W | T & E Species Sites | Hospitals | Katy Trail (DNR State Park) | Lakes | Rivers |
| Normal R/W | Hazardous Material Locations | Schools | Mark Twain Forest Properties | Floodplains | |
| Limited Access R/W | NRHP Archaeological Sites | City/County Parks | Mark Twain Forest Boundary | Palustrine Vegetative Wetlands | |
| Median Barrier | NRHP Structure Sites | City/County Parks | Natural Features Sites | Palustrine Upland Ponds | |
| County Boundary | Churches | Conservation Areas | Historical Sites | Riverine | |
| City Boundary | Cemeteries | DNR State Parks | National Wildlife Refuge | Lacustrine | Wetland Areas |

Widening Improvements to Existing Corridor Columbia

2 OF 11

CONCEPT ONLY



- Fully Limited Access R/W
- Normal R/W
- Limited Access R/W
- Median Barrier
- County Boundary
- City Boundary

- T & E Species Sites
- Hazardous Material Locations
- NRHP Archaeological Sites
- NRHP Structures Sites
- Churches
- Cemeteries

- Hospitals
- Schools
- City/County Parks
- Conservation Areas
- DNR State Parks

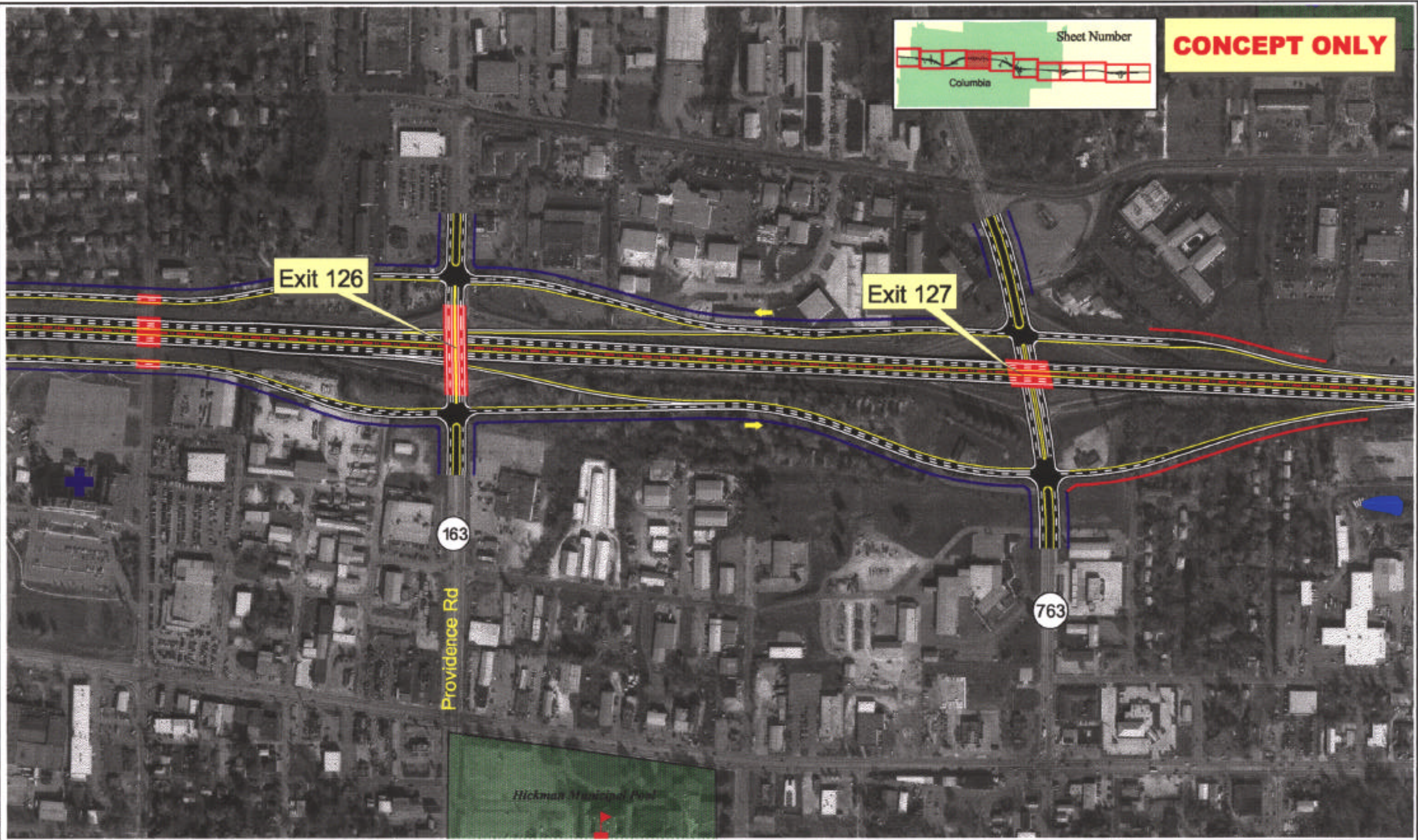
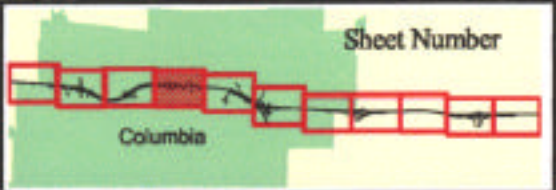
- Katy Trail (DNR State Park)
- Mark Twain Forest Properties
- Mark Twain Forest Boundary
- Natural Features Sites
- Historical Sites
- National Wildlife Refuge

- Lakes
- Floodplains
- Palustrine Vegetative Wetlands
- Palustrine Upland Ponds
- Riverine
- Lacustrine
- Wetland Areas

TITLE
**Widening Improvements to Existing Corridor
Columbia**

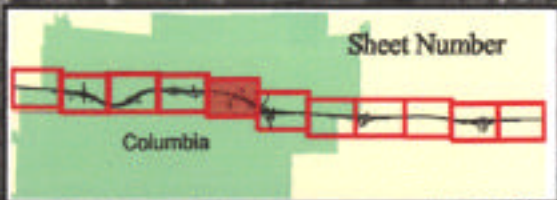
SHEET
3 OF 11

CONCEPT ONLY



Scale: 1" = 400 feet

- | | | | | | |
|--------------------------|------------------------------|--------------------|------------------------------|--------------------------------|---------------|
| Fully Limited Access R/W | T & E Species Sites | Hospitals | Katy Trail (DNR State Park) | Lakes | Rivers |
| Normal R/W | Hazardous Material Locations | Schools | Mark Twain Forest Properties | Floodplains | |
| Limited Access R/W | NRHP Archaeological Sites | City/County Parks | Mark Twain Forest Boundary | Palustrine Vegetative Wetlands | |
| Median Barrier | NRHP Structure Sites | City/County Parks | Natural Features Sites | Palustrine Upland Ponds | |
| County Boundary | Churches | Conservation Areas | Historical Sites | Rivertine | |
| City Boundary | Cemeteries | DNR State Parks | National Wildlife Refuge | Lactostine | Wetland Areas |



CONCEPT ONLY

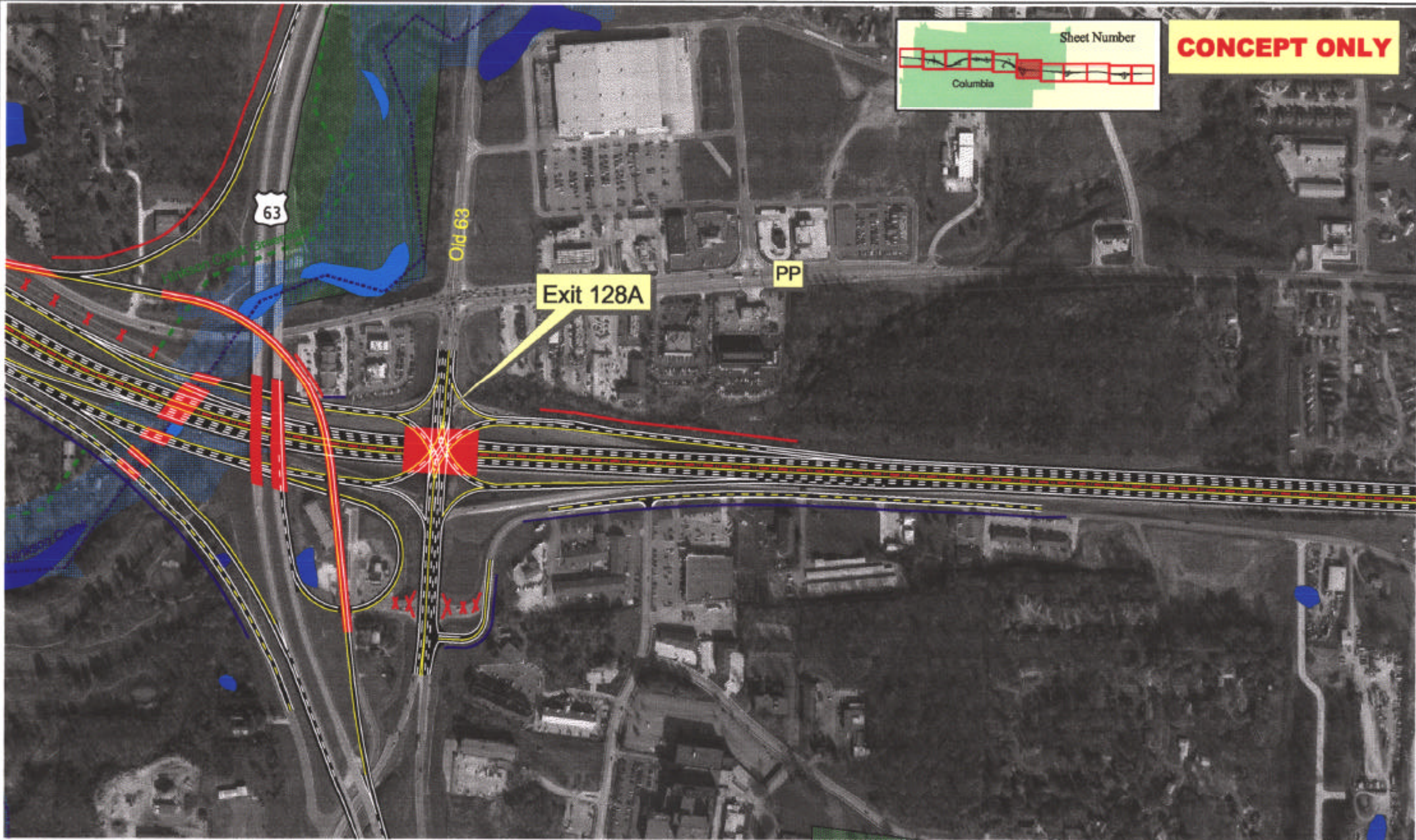
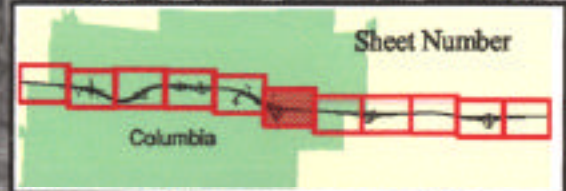


Scale: 1" = 400 feet

- | | | | | | |
|--|--|---|---|---|---|
| <ul style="list-style-type: none"> Fully Limited Access R/W Normal R/W Limited Access R/W Median Barrier County Boundary City Boundary | <ul style="list-style-type: none"> T & E Species Sites Hazardous Material Locations NRHP Archaeological Sites NRHP Structure Sites Churches Cemeteries | <ul style="list-style-type: none"> Hospitals Schools City/County Parks City/County Parks Conservation Areas DNR State Parks | <ul style="list-style-type: none"> Katy Trail (DNR State Park) Mark Twain Forest Properties Mark Twain Forest Boundary Natural Features Sites Historical Sites National Wildlife Refuge | <ul style="list-style-type: none"> Lakes Floodplains Palustrine Vegetative Wetlands Palustrine Upland Ponds Riverine Lacustrine | <ul style="list-style-type: none"> Rivers Wetland Areas |
|--|--|---|---|---|---|

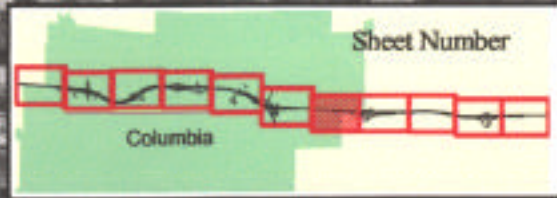
MoDOT
Widening Improvements to Existing Corridor Columbia
 SHEET 5 OF 11

CONCEPT ONLY



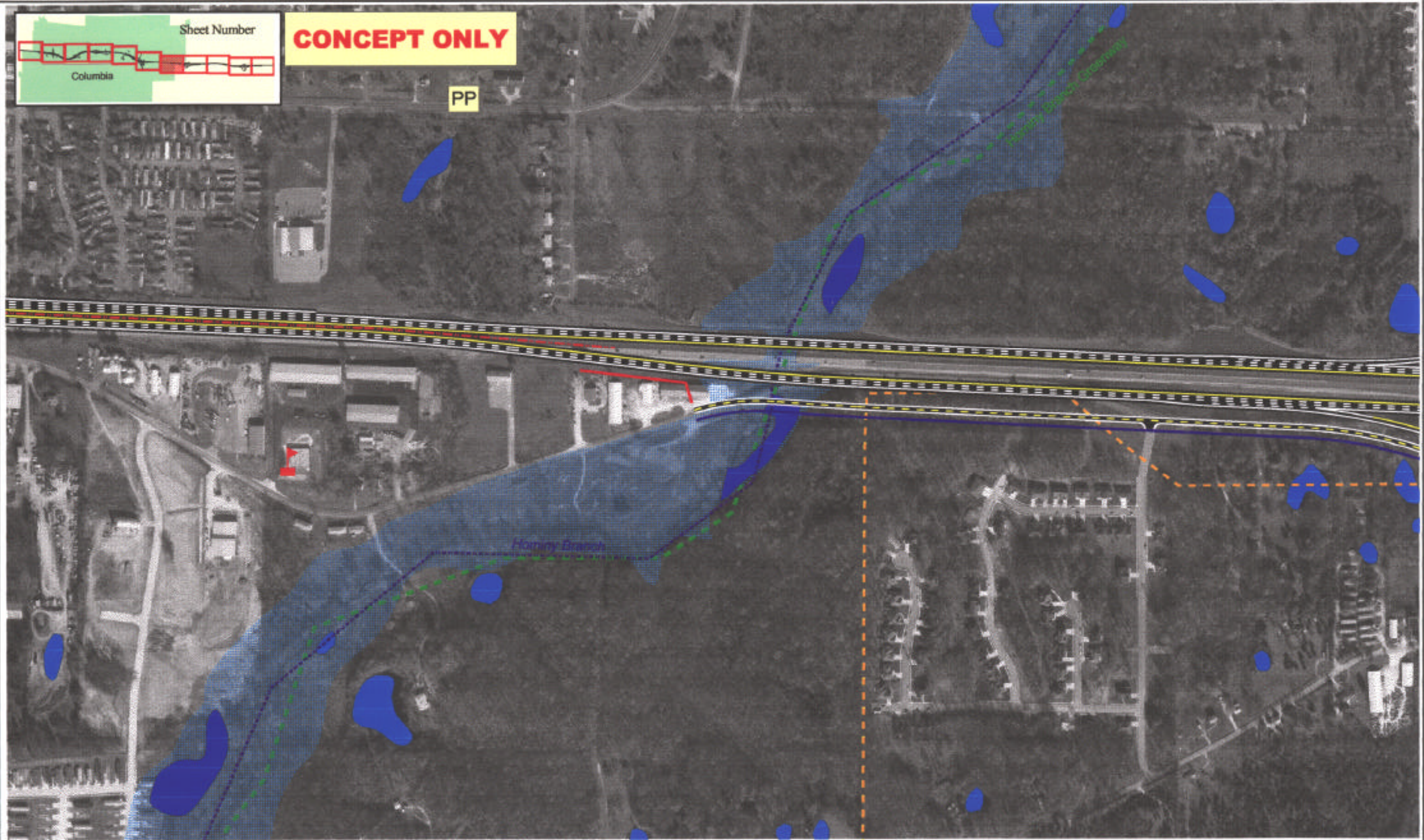
- | | | | | | |
|--------------------------|------------------------------|--------------------|------------------------------|--------------------------------|---------------|
| Fully Limited Access R/W | T & E Species Sites | Hospitals | Katy Trail (DNR State Park) | Lakes | Rivers |
| Normal R/W | Hazardous Material Locations | Schools | Mark Twain Forest Properties | Floodplains | |
| Limited Access R/W | NRHP Archaeological Sites | City/County Parks | Mark Twain Forest Boundary | Palustrine Vegetative Wetlands | |
| Median Barrier | NRHP Structure Sites | City/County Parks | Natural Features Sites | Palustrine Upland Ponds | |
| County Boundary | Churches | Conservation Areas | Historical Sites | Riverine | |
| City Boundary | Cemeteries | DNR State Parks | National Wildlife Refuge | Lacustrine | Wetland Areas |

Widening Improvements
to Existing Corridor
Columbia



CONCEPT ONLY

PP



- Fully Limited Access R/W
- Normal R/W
- Limited Access R/W
- Median Barrier
- County Boundary
- City Boundary

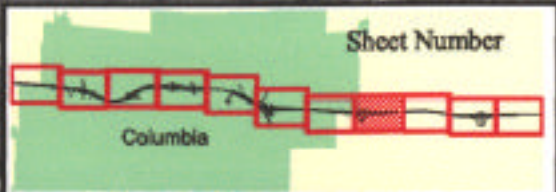
- T & E Species Sites
- Hazardous Material Locations
- NRHP Archaeological Sites
- NRHP Structure Sites
- Churches
- Cemeteries

- Hospitals
- Schools
- City/County Parks
- City/County Parks
- Conservation Areas
- DNR State Parks
- Katy Trail (DNR State Park)
- Mark Twain Forest Properties
- Mark Twain Forest Boundary
- Natural Features Sites
- Historical Sites
- National Wildlife Refuge

- Lakes
- Floodplains
- Palustrine Vegetative Wetlands
- Palustrine Upland Ponds
- Riverine
- Lacustrine
- Rivers
- Wetland Area

Widening Improvements to Existing Corridor
Columbia

CONCEPT ONLY



St Charles

St Charles

Exit 131



- Fully Limited Access R/W
- Normal R/W
- Limited Access R/W
- Median Barrier
- County Boundary
- City Boundary

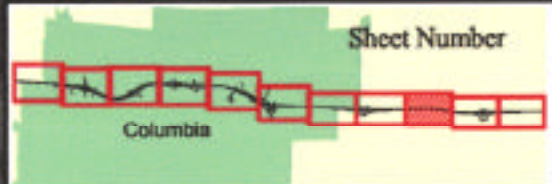
- T & E Species Sites
- Hazardous Material Locations
- NRHP Archaeological Sites
- NRHP Structure Sites
- Churches
- Cemeteries

- Hospitals
- Schools
- City/County Parks
- Conservation Areas
- DNR State Parks

- Katy Trail (DNR State Park)
- Mark Twain Forest Properties
- Mark Twain Forest Boundary
- Natural Features Sites
- Historical Sites
- National Wildlife Refuge

- Lakes
- Floodplains
- Palustrine Vegetative Wetlands
- Palustrine Upland Ponds
- Riverine
- Lacustrine Wetland Areas

Widening Improvements to Existing Corridor
Columbia



CONCEPT ONLY



Scale: 1" = 400 feet

- Fully Limited Access R/W
- Normal R/W
- Limited Access R/W
- Median Barrier
- County Boundary
- City Boundary

- T & E Species Sites
- Hazardous Material Locations
- NRHP Archaeological Sites
- NRHP Structure Sites
- Churches
- Cemeteries

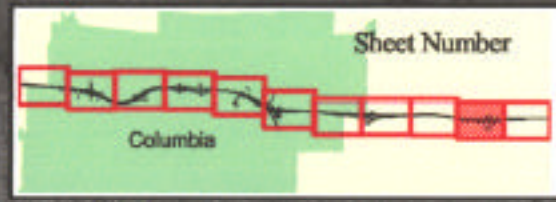
- Hospitals
- Schools
- City/County Parks
- City/County Parks
- Conservation Areas
- DNR State Parks
- Hospitals
- Schools
- Mark Twain Forest Properties
- Mark Twain Forest Boundary
- Natural Features Sites
- Historical Sites
- National Wildlife Refuge

- Lakes
- Floodplains
- Palustrine Vegetative Wetlands
- Palustrine Upland Ponds
- Riverine
- Lacustrine
- Rivers
- Wetland Areas

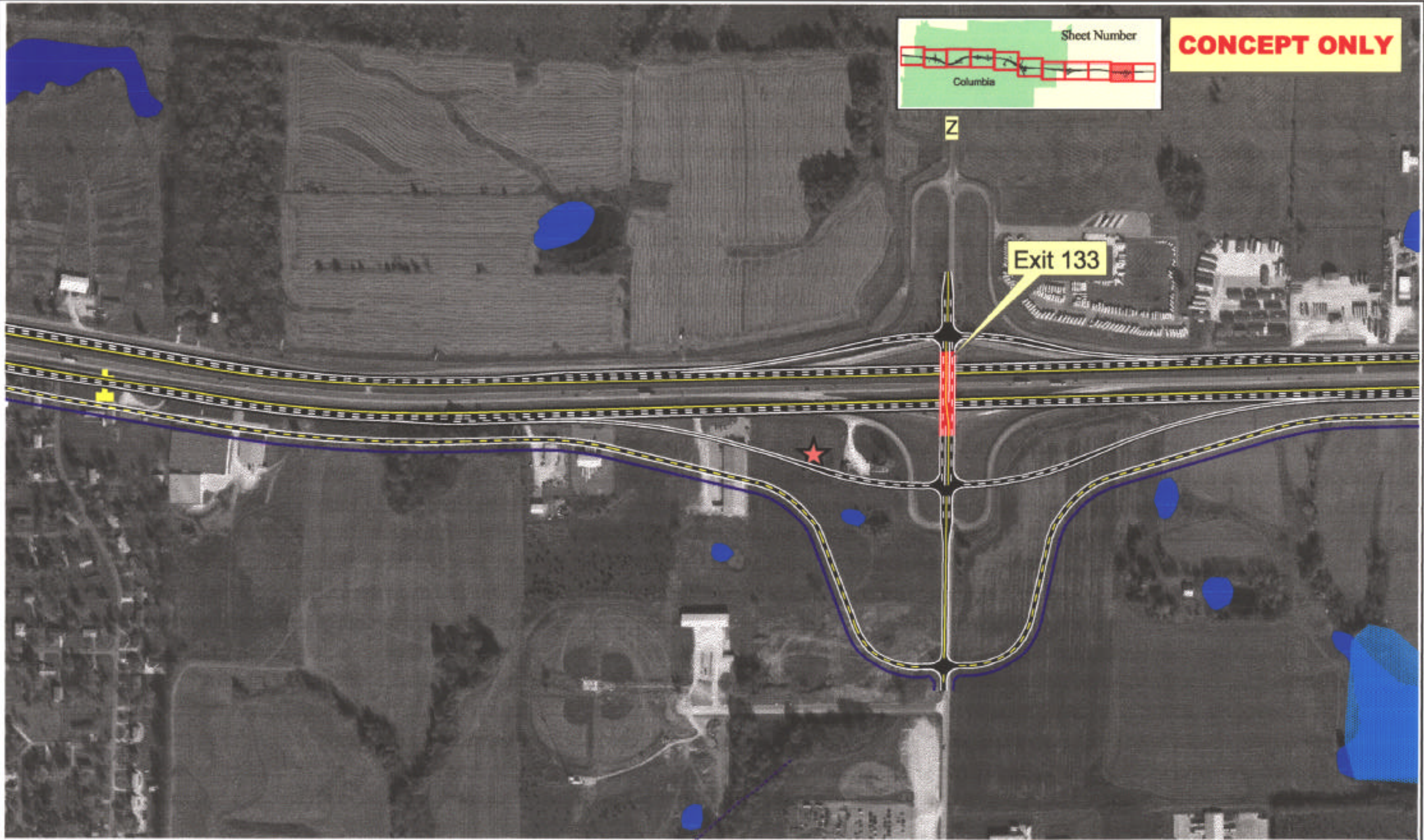
TITLE **Widening Improvements to Existing Corridor Columbia**

SHEET **9 OF 11**

CONCEPT ONLY



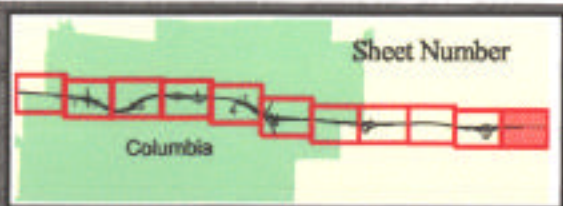
Exit 133



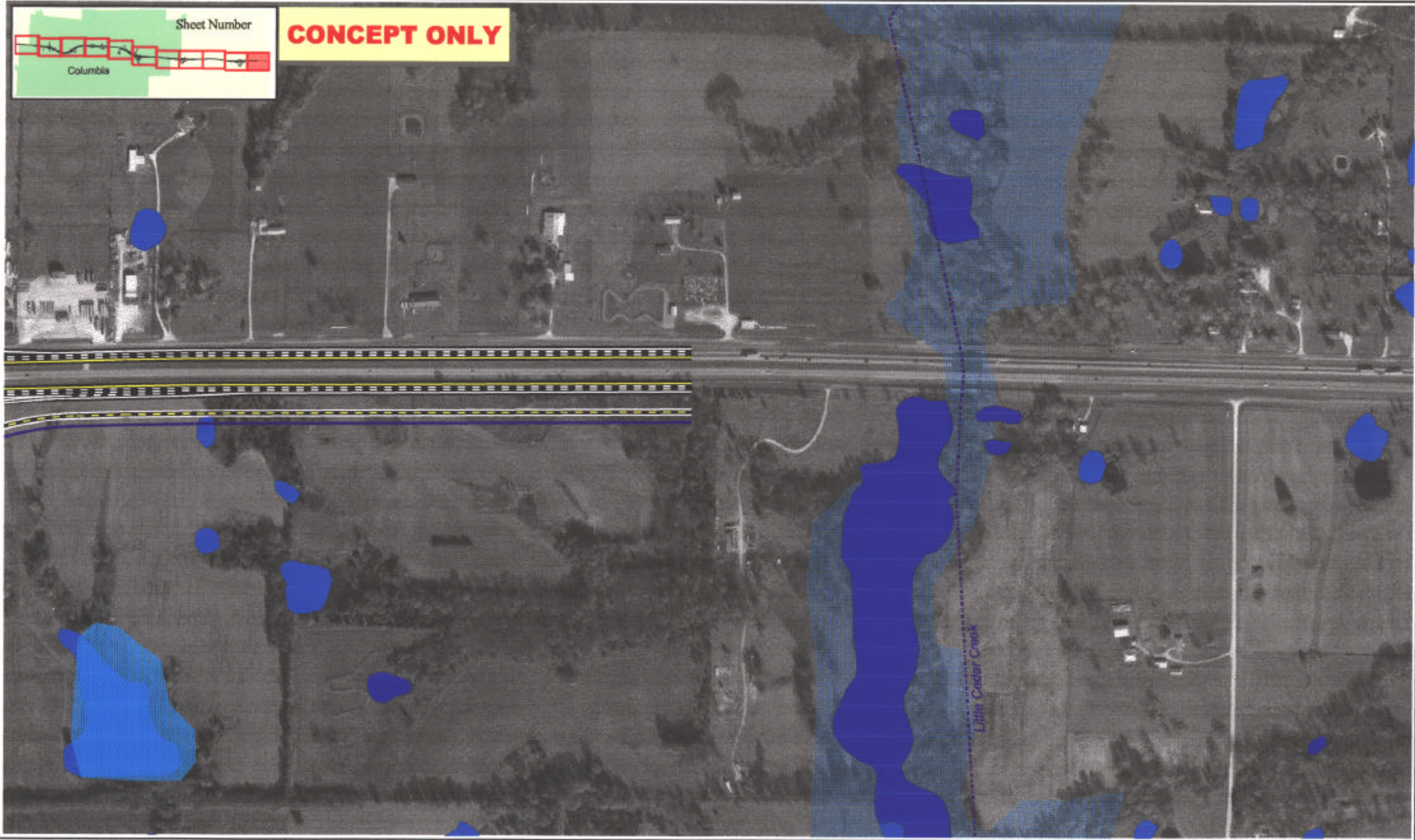
Scale: 1" = 400 feet

- | | | | | | |
|--------------------------|------------------------------|--------------------|------------------------------|--------------------------------|---------------|
| Fully Limited Access R/W | T & E Species Sites | Hospitals | Katy Trail (DNR State Park) | Lakes | Rivers |
| Normal R/W | Hazardous Material Locations | Schools | Mark Twain Forest Properties | Floodplains | |
| Limited Access R/W | NRHP Archaeological Sites | City/County Parks | Mark Twain Forest Boundary | Palustrine Vegetative Wetlands | |
| Median Barrier | NRHP Structure Sites | City/County Parks | Natural Features Sites | Palustrine Upland Ponds | |
| County Boundary | Churches | Conservation Areas | Historical Sites | Riverine | |
| City Boundary | Cemeteries | DNR State Parks | National Wildlife Refuge | Lacustrine | Wetland Areas |

TITLE
Widening Improvements to Existing Corridor Columbia
SHEET
10 OF 11

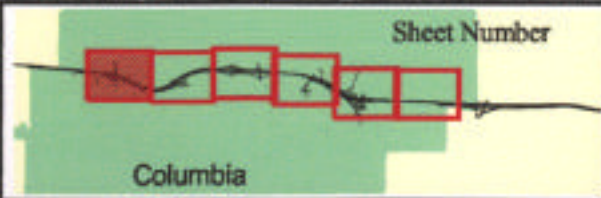


CONCEPT ONLY



Scale: 1" = 400 feet

- | | | | | | |
|--|--|--|---|---|---|
| <ul style="list-style-type: none"> Fully Limited Access R/W Normal R/W Limited Access R/W Median Barrier County Boundary City Boundary | <ul style="list-style-type: none"> T & E Species Sites Hazardous Material Locations NRHP Archaeological Sites NRHP Structure Sites Churches Cemeteries | <ul style="list-style-type: none"> Hospitals Schools City/County Parks City/County Parks Conservation Area DNR State Parks | <ul style="list-style-type: none"> Katy Trail (DNR State Park) Mark Twain Forest Properties Mark Twain Forest Boundary Natural Features Sites Historical Sites National Wildlife Refuge | <ul style="list-style-type: none"> Lakes Floodplains Palustrine Vegetative Wetlands Palustrine Upland Ponds Riverine Lacustrine | <ul style="list-style-type: none"> Rivers Wetland Areas |
|--|--|--|---|---|---|



CONCEPT ONLY

Stadium Blvd

Exit 124

Add Auxiliary Lanes

Continuous Raised Median

740

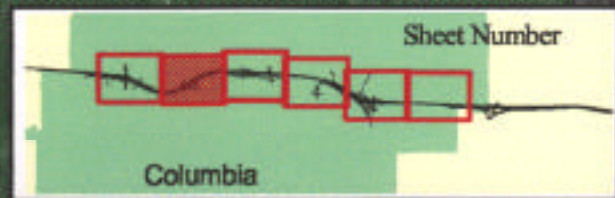
Cosmo Recreation Area & Golf Course



LEGEND	
	Fully Limited Access R/W
	Normal R/W
	Limited Access R/W
	County Boundary
	City Boundary
	T & E Species Sites
	Hazardous Material Locations
	NRHP Archaeological Sites
	NRHP Structure Sites
	Churches
	Cemeteries
	Hospitals
	Schools
	City/County Parks
	City/County Parks
	Conservation Areas
	DNR State Parks
	Katy Trail (DNR State Park)
	Mark Twain Forest Properties
	Mark Twain Forest Boundary
	Natural Features Sites
	Historical Sites
	National Wildlife Refuge
	Lakes
	Floodplains
	Palustrine Vegetative Wetlands
	Palustrine Upland Ponds
	Riverine
	Lacustrine
	Rivers
	Wetland Areas

TITLE
**Improvements to Existing I-70
 with Relocation Option
 Columbia**

SHEET
1 OF 6

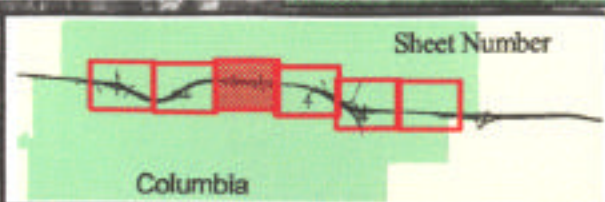


CONCEPT ONLY



LEGEND											
	Fully Limited Access R/W		T & E Species Sites		Hospitals		Katy Trail (DNR State Park)		Lakes		Rivers
	Normal R/W		Hazardous Material Locations		Schools		Mark Twain Forest Properties		Floodplains		
	Limited Access R/W		NRHP Archaeological Sites		City/County Parks		Mark Twain Forest Boundary		Palustrine Vegetative Wetlands		
	County Boundary		NRHP Structure Sites		City/County Parks		Natural Features Sites		Palustrine Upland Ponds		
	City Boundary		Churches		Conservation Areas		Historical Sites		Riverine		
			Cemeteries		DNR State Parks		National Wildlife Refuge		Lacustrine		Wetland Areas

Improvements to Existing I-70
with Relocation Option
Columbia



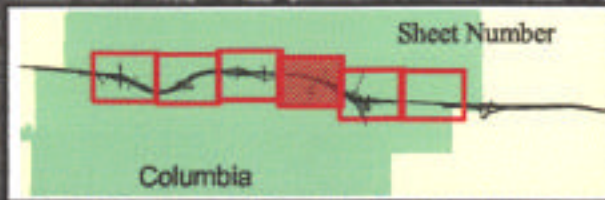
CONCEPT ONLY



LEGEND	
Fully Limited Access R/W	T & E Species Sites
Normal R/W	Hazardous Material Locations
Limited Access R/W	NRHP Archaeological Sites
County Boundary	NRHP Structure Sites
City Boundary	Churches
Cemeteries	Hospitals
Schools	City/County Parks
City/County Parks	City/County Parks
Conservation Areas	Conservation Areas
DNR State Parks	DNR State Parks
National Wildlife Refuge	National Wildlife Refuge
Katy Trail (DNR State Park)	Katy Trail (DNR State Park)
Mark Twain Forest Properties	Mark Twain Forest Properties
Mark Twain Forest Boundary	Mark Twain Forest Boundary
Natural Features Sites	Natural Features Sites
Historical Sites	Historical Sites
Lakes	Lakes
Floodplains	Floodplains
Palustrine Vegetative Wetlands	Palustrine Vegetative Wetlands
Palustrine Upland Ponds	Palustrine Upland Ponds
Riverine	Riverine
Lacustrine	Lacustrine
Wetland Areas	Wetland Areas

TITLE
**Improvements to Existing I-70
 with Relocation Option
 Columbia**

SHEET
3 OF 6



CONCEPT ONLY

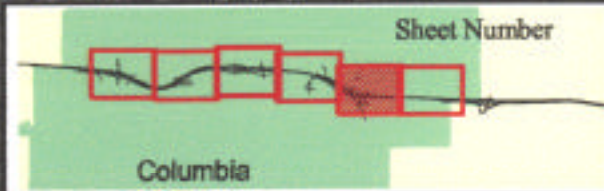


LEGEND

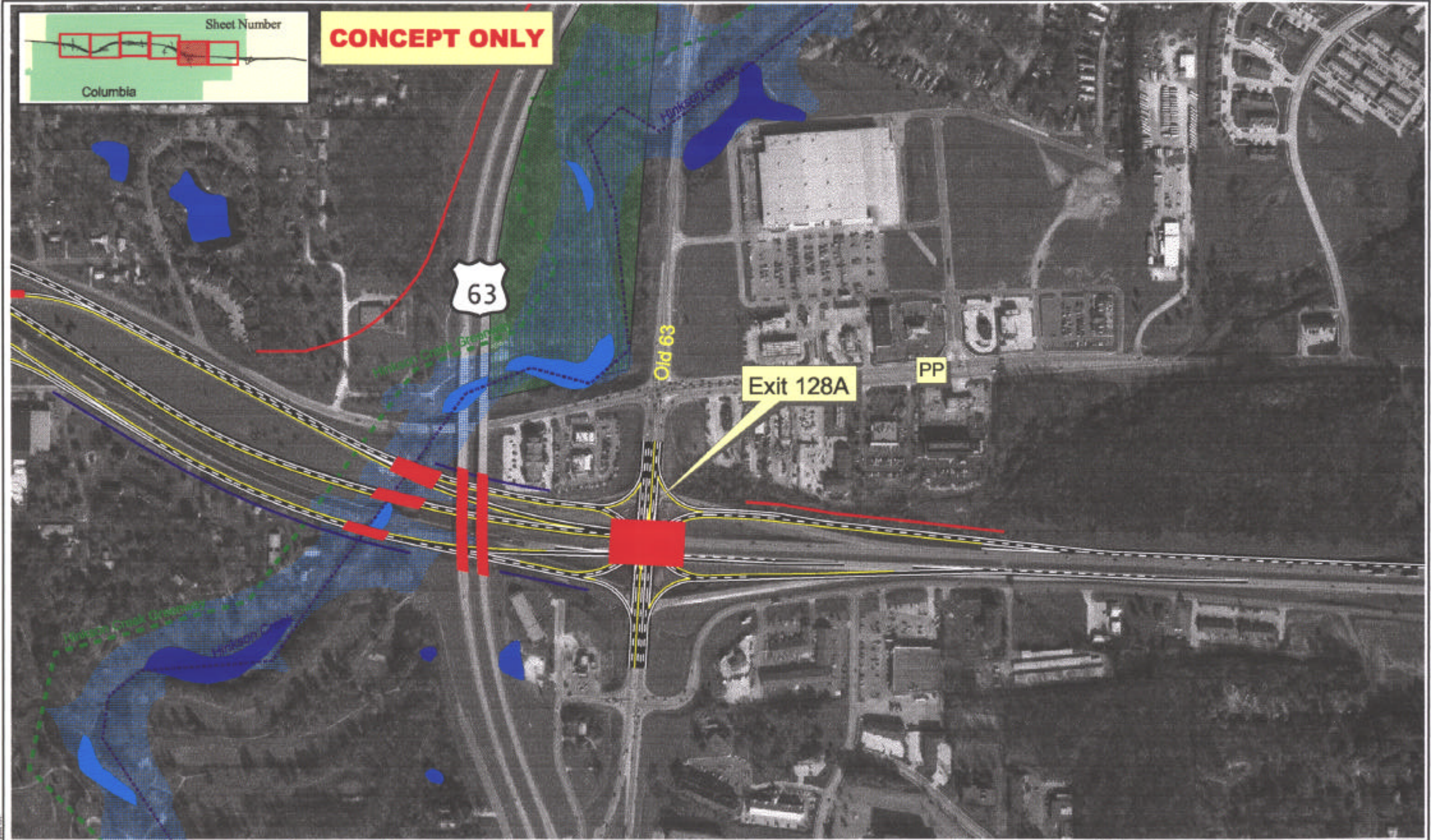
- | | | | | | |
|--------------------------|------------------------------|--------------------|------------------------------|--------------------------------|---------------|
| Fully Limited Access R/W | T & E Species Sites | Hospitals | Katy Trail (DNR State Park) | Lakes | Rivers |
| Normal R/W | Hazardous Material Locations | Schools | Mark Twain Forest Properties | Floodplains | |
| Limited Access R/W | NRHP Archaeological Sites | City/County Parks | Mark Twain Forest Boundary | Palustrine Vegetative Wetlands | |
| County Boundary | NRHP Structure Sites | City/County Parks | Natural Features Sites | Palustrine Upland Pools | |
| City Boundary | Churches | Conservation Areas | Historical Sites | Riverine | |
| | Cemeteries | DNR State Parks | National Wildlife Refuge | Lacustrine | Wetland Areas |

Improvements to Existing I-70
with Relocation Option
Columbia

4 OF 6

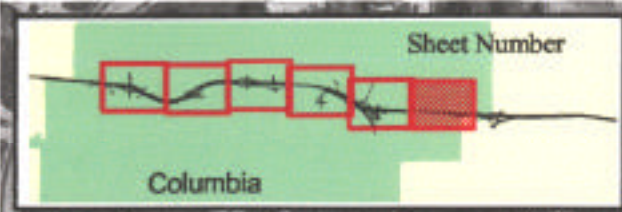


CONCEPT ONLY



LEGEND	
	Fully Limited Access R/W
	Normal R/W
	Limited Access R/W
	County Boundary
	City Boundary
	T & E Species Sites
	Hazardous Material Locations
	NRHP Archaeological Sites
	NRHP Structure Sites
	Churches
	Cemeteries
	Hospitals
	Schools
	City/County Parks
	City/County Parks
	Conservation Areas
	DNR State Parks
	Katy Trail (DNR State Park)
	Mark Twain Forest Properties
	Mark Twain Forest Boundary
	Natural Features Sites
	Historical Sites
	National Wildlife Refuge
	Lakes
	Floodplains
	Palustrine Vegetative Wetlands
	Palustrine Upland Ponds
	Riverine
	Lacustrine
	Wetland Areas

**Improvements to Existing I-70
with Relocation Option
Columbia**



CONCEPT ONLY

Mckee Street Park

PP

Hornys Branch

AECOM

Scale: 1" = 400 feet

Fully Limited Access R/W	T & E Species Sites	Hospitals	Katy Trail (DNR State Park)	Lakes	Rivers
Normal R/W	Hazardous Material Locations	Schools	Mark Twain Forest Properties	Floodplains	
Limited Access R/W	NRHP Archaeological Sites	City/County Parks	Mark Twain Forest Boundary	Palustrine Vegetative Wetlands	
County Boundary	NRHP Structure Sites	City/County Parks	Natural Features Sites	Palustrine Upland Ponds	
City Boundary	Churches	Conservation Areas	Historical Sites	Riverine	
	Cemeteries	DNR State Parks	National Wildlife Refuge	Lacustrine	Wetland Areas

Improvements to Existing I-70
with Relocation Option
Columbia

6 OF 6