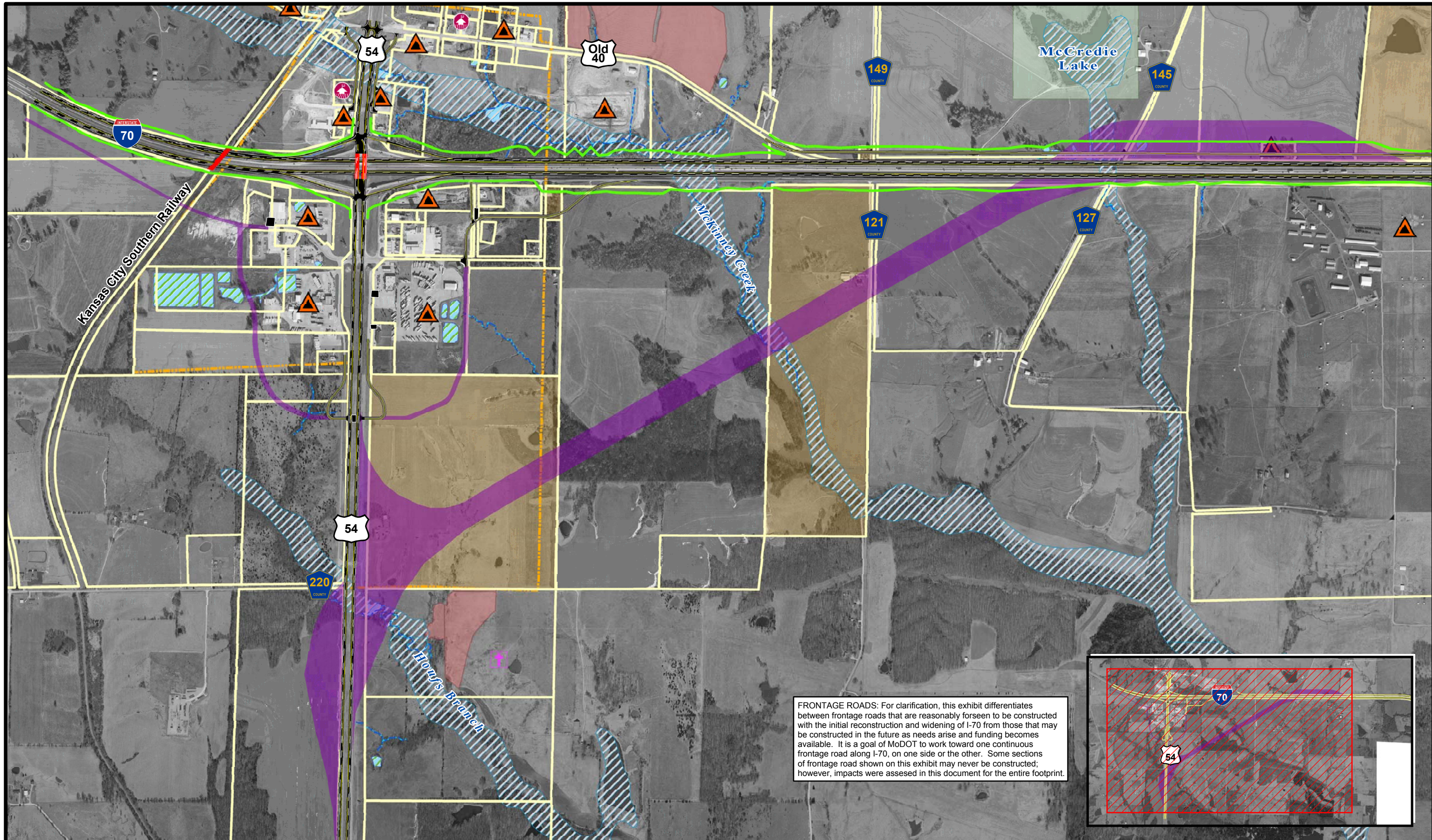




ATTENTION!

Readers and Reviewers

Exhibits III-2 and III-3 only depict the Kingdom City and Mineola Hill areas. Aerial photos for the entire length of SIU6 are contained in the Draft EA.



SECTION 6
Kingdom City to
Montgomery City

Alternative	Removed Roadway	City Boundary	Historic Site	Wetland
Bridge	Limits of Construction (Approx)	Parcel Boundary	Cemetery	Floodplain
Possible Future Construction	Waters	Structure Taking	Hazardous Waste Site	CRP Land
Future Frontage Road	Park			

1 inch equals 1,085 feet
Aerial: November 2000

Interstate 70 SIU 6
Selected Alternative
Kingdom City

EXHIBIT
III-2