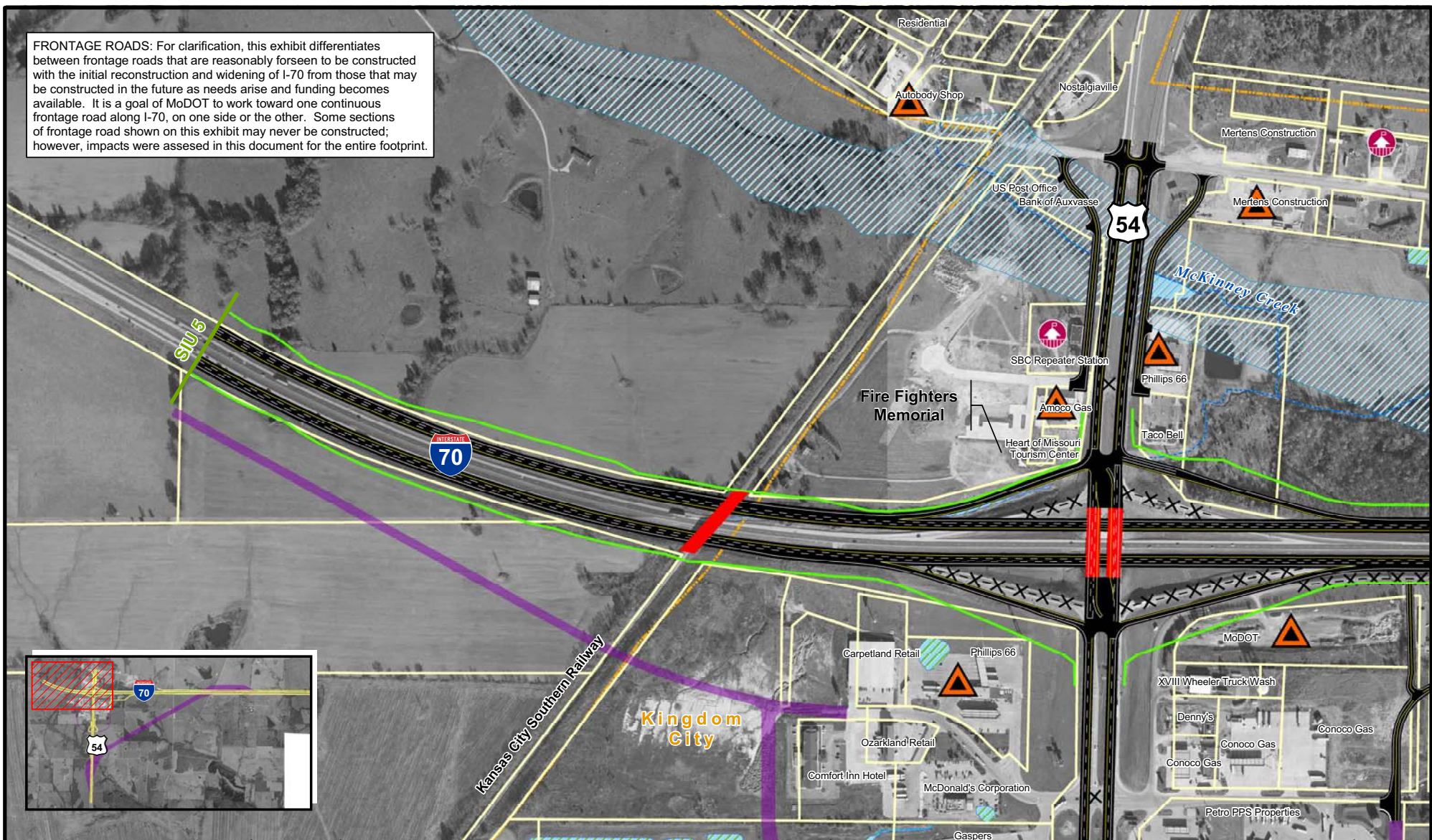


## **Appendix C**

# **Environmentally Sensitive Features**

The following figures display the recommended preferred alternative alignment and environmentally sensitive features in the SIU 6 Study Corridor. The aerial photography used in the figures was flown in November 2002. Among the features displayed are properties and structures that would be displaced by the recommended preferred alternative. Although properties containing displaced structures are shaded in their entirety, in many instances only a portion of the property would require a taking.

**FRONTAGE ROADS:** For clarification, this exhibit differentiates between frontage roads that are reasonably foreseen to be constructed with the initial reconstruction and widening of I-70 from those that may be constructed in the future as needs arise and funding becomes available. It is a goal of MoDOT to work toward one continuous frontage road along I-70, on one side or the other. Some sections of frontage road shown on this exhibit may never be constructed; however, impacts were assessed in this document for the entire footprint.



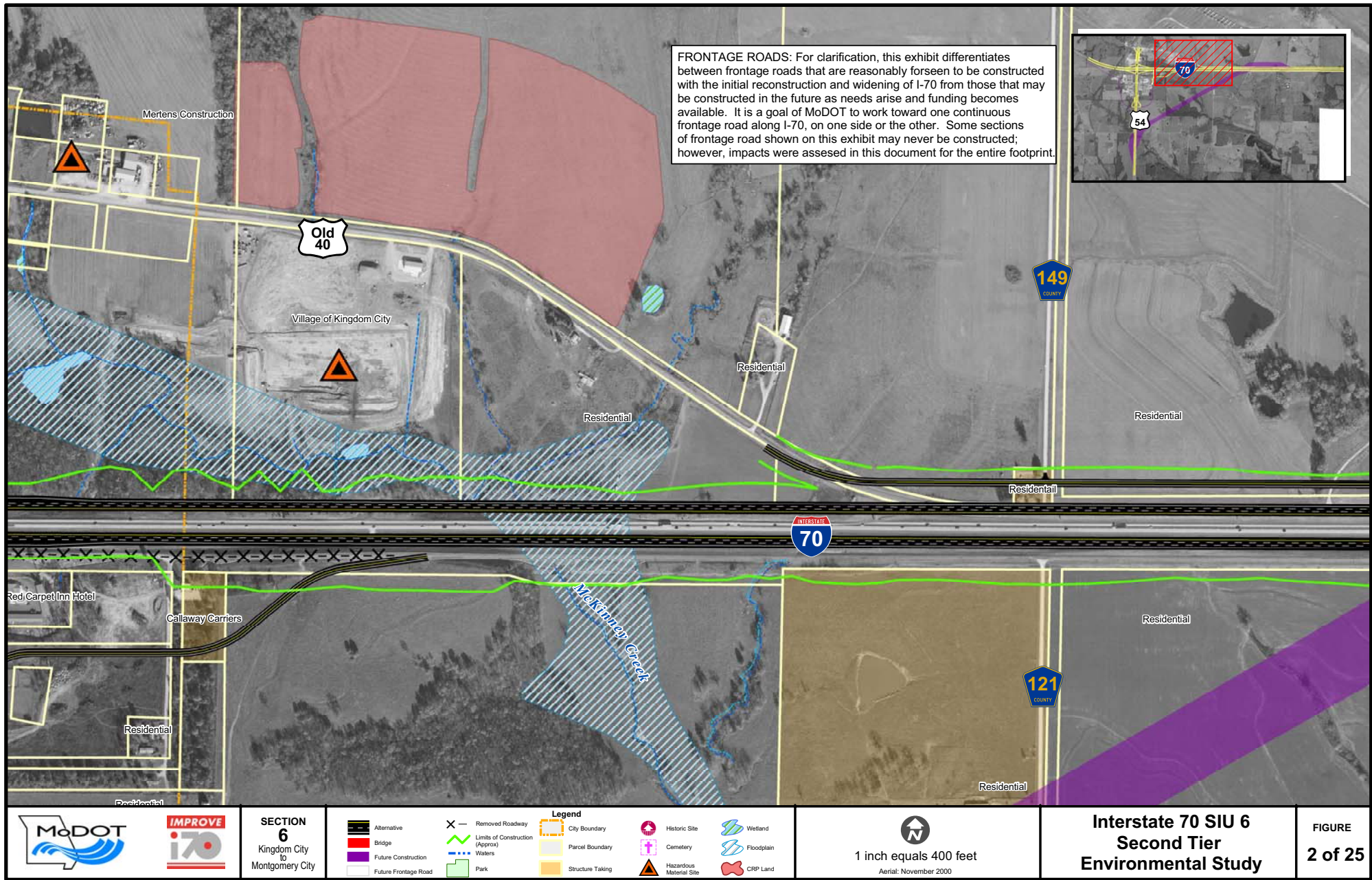
**SECTION 6**  
Kingdom City  
to  
Montgomery City


1 inch equals 400 feet  
Aerial: November 2000

**Interstate 70 SIU 6  
Second Tier  
Environmental Study**

**FIGURE  
1 of 25**











**FRONTAGE ROADS:** For clarification, this exhibit differentiates between frontage roads that are reasonably foreseen to be constructed with the initial reconstruction and widening of I-70 from those that may be constructed in the future as needs arise and funding becomes available. It is a goal of MoDOT to work toward one continuous frontage road along I-70, on one side or the other. Some sections of frontage road shown on this exhibit may never be constructed; however, impacts were assessed in this document for the entire footprint.



Alternative  
Bridge  
Future Construction  
Future Frontage Road

**Legend**

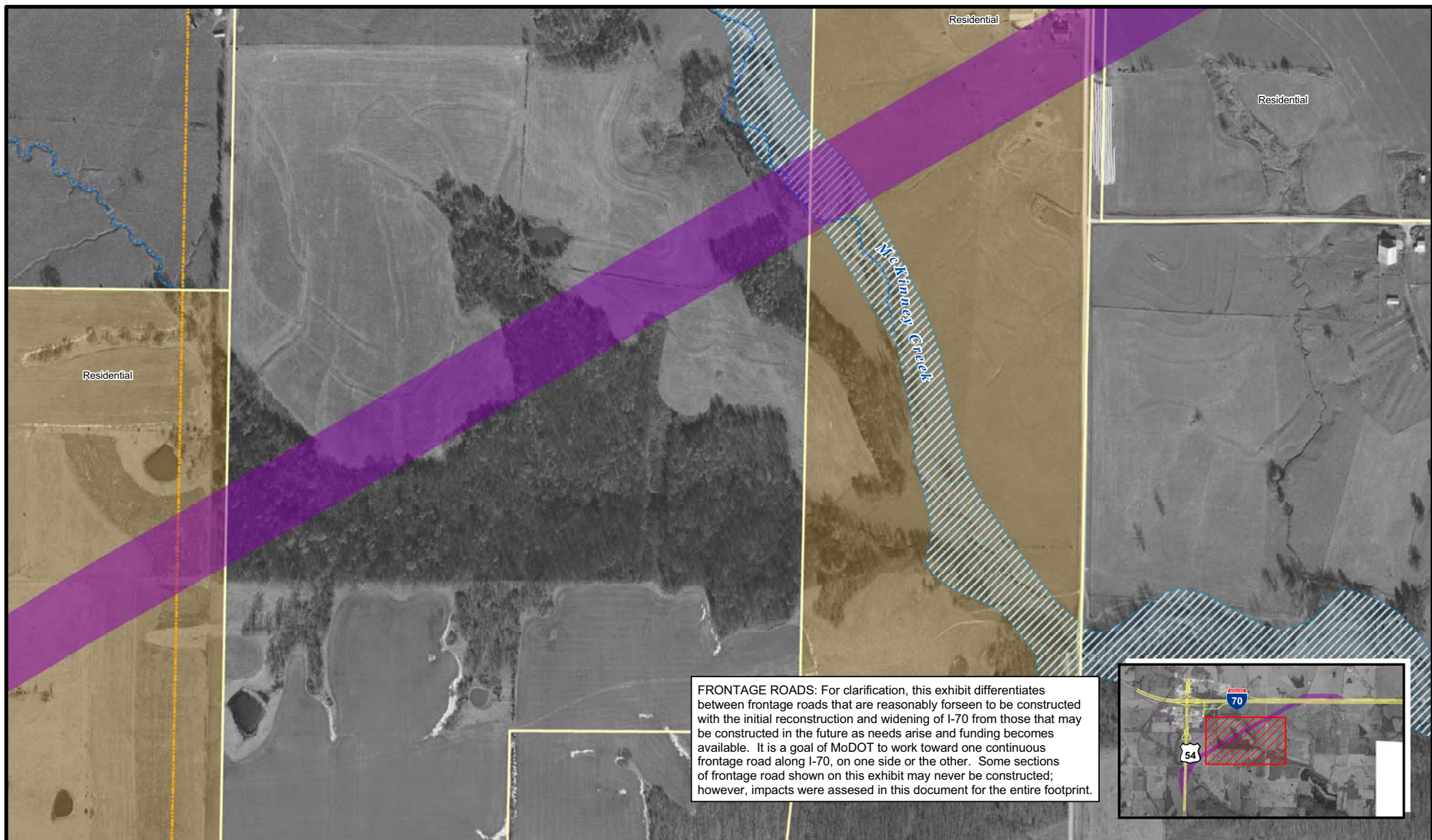
- City Boundary
- Parcel Boundary
- Structure Taking

Wetland  
Floodplain  
CRP Land



FIGURE  
4 of 25



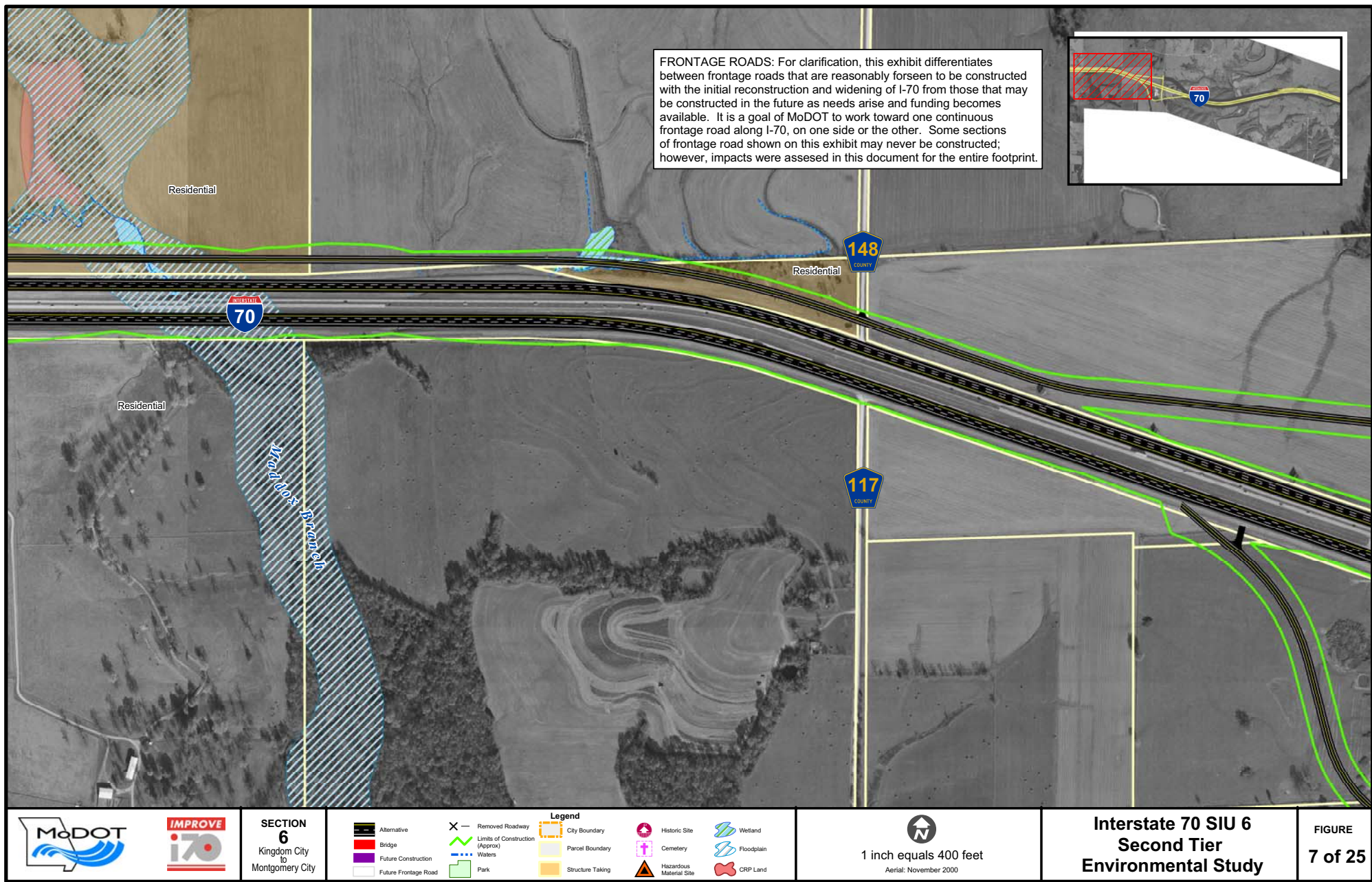


		<p><b>SECTION 6</b> Kingdom City to Montgomery City</p>	<p><b>Legend</b></p> <table border="0"> <tr> <td> Alternative</td> <td> Removed Roadway</td> <td> City Boundary</td> <td> Historic Site</td> <td> Wetland</td> </tr> <tr> <td> Bridge</td> <td> Limits of Construction (Approx)</td> <td> Parcel Boundary</td> <td> Cemetery</td> <td> Floodplain</td> </tr> <tr> <td> Future Construction</td> <td> Waters</td> <td> Structure Taking</td> <td> Hazardous Material Site</td> <td> CRP Land</td> </tr> <tr> <td> Future Frontage Road</td> <td> Park</td> <td></td> <td></td> <td></td> </tr> </table>	Alternative	Removed Roadway	City Boundary	Historic Site	Wetland	Bridge	Limits of Construction (Approx)	Parcel Boundary	Cemetery	Floodplain	Future Construction	Waters	Structure Taking	Hazardous Material Site	CRP Land	Future Frontage Road	Park				<p> 1 inch equals 400 feet Aerial: November 2000</p>	<p><b>Interstate 70 SIU 6 2nd Tier Environmental Study</b></p>	<p><b>FIGURE 5 of 25</b></p>
Alternative	Removed Roadway	City Boundary	Historic Site	Wetland																						
Bridge	Limits of Construction (Approx)	Parcel Boundary	Cemetery	Floodplain																						
Future Construction	Waters	Structure Taking	Hazardous Material Site	CRP Land																						
Future Frontage Road	Park																									

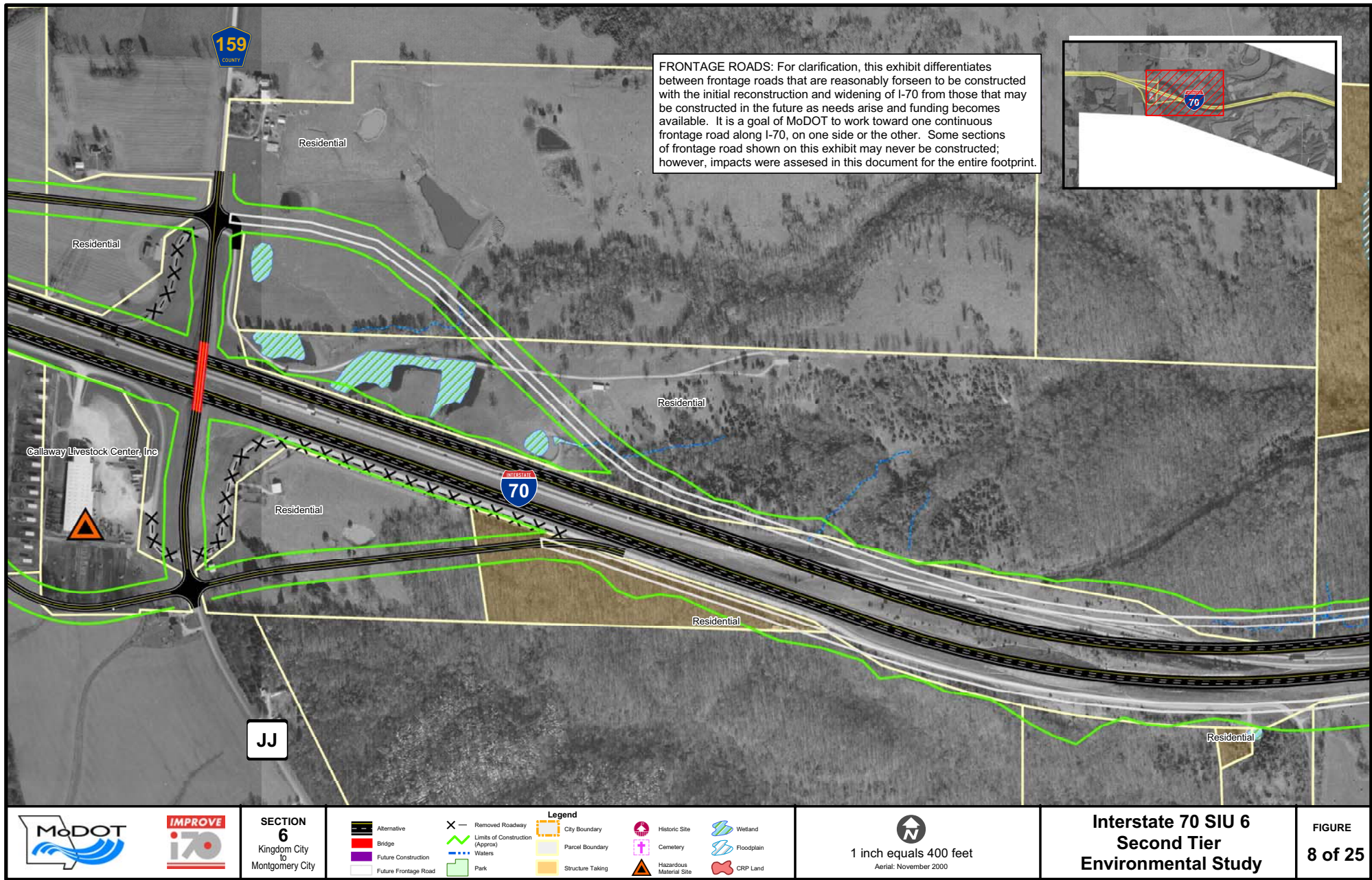




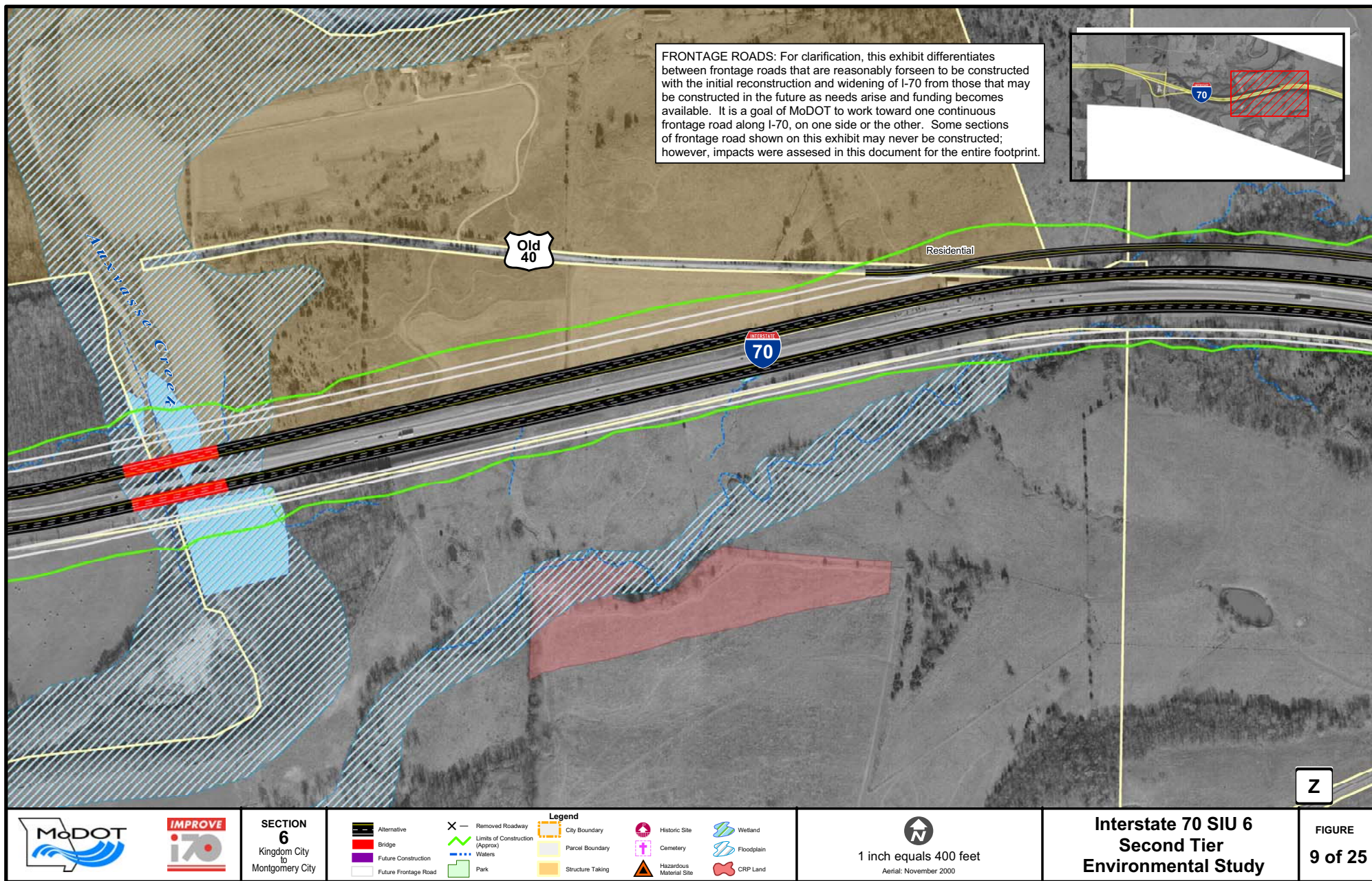




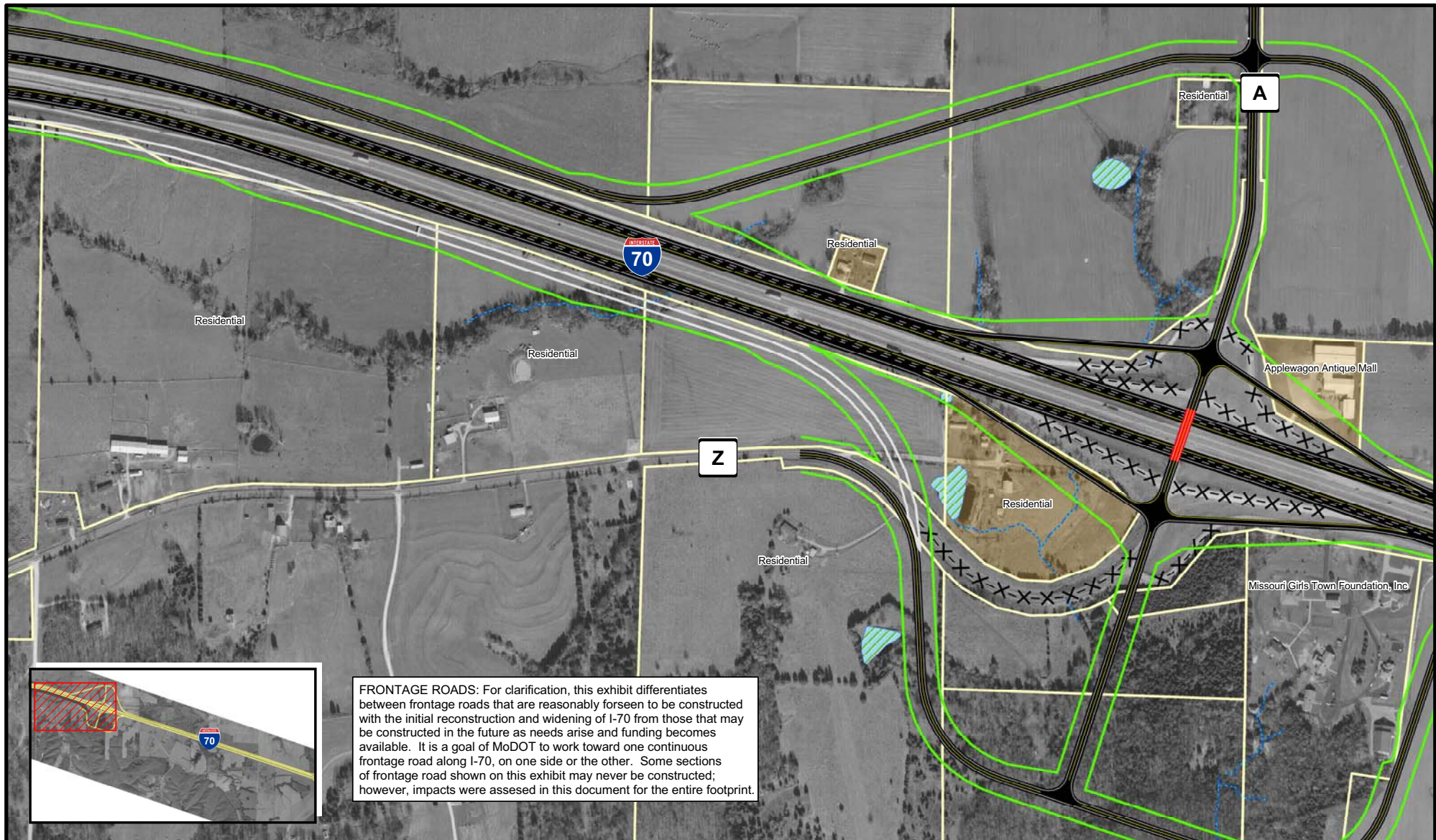








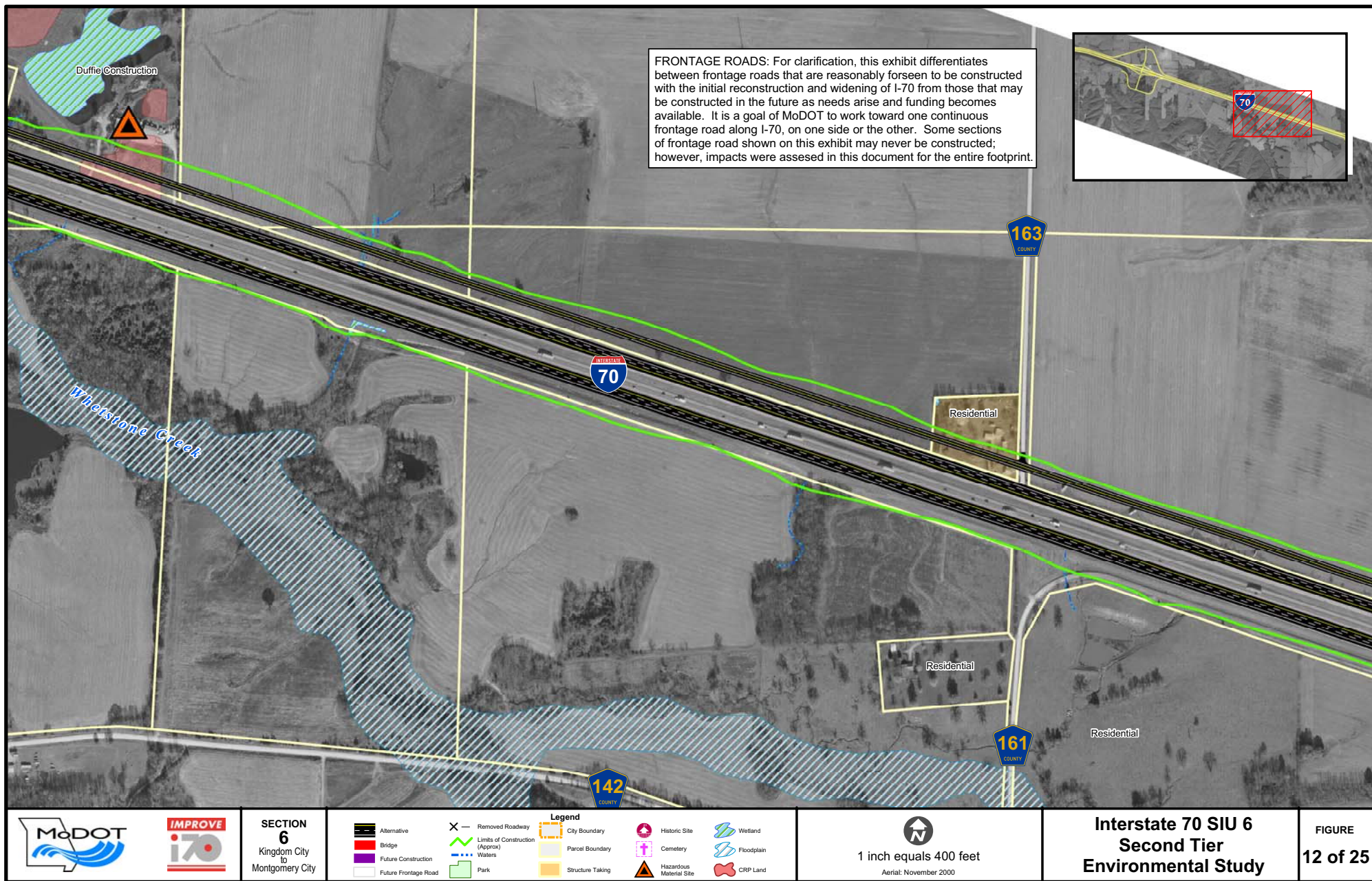




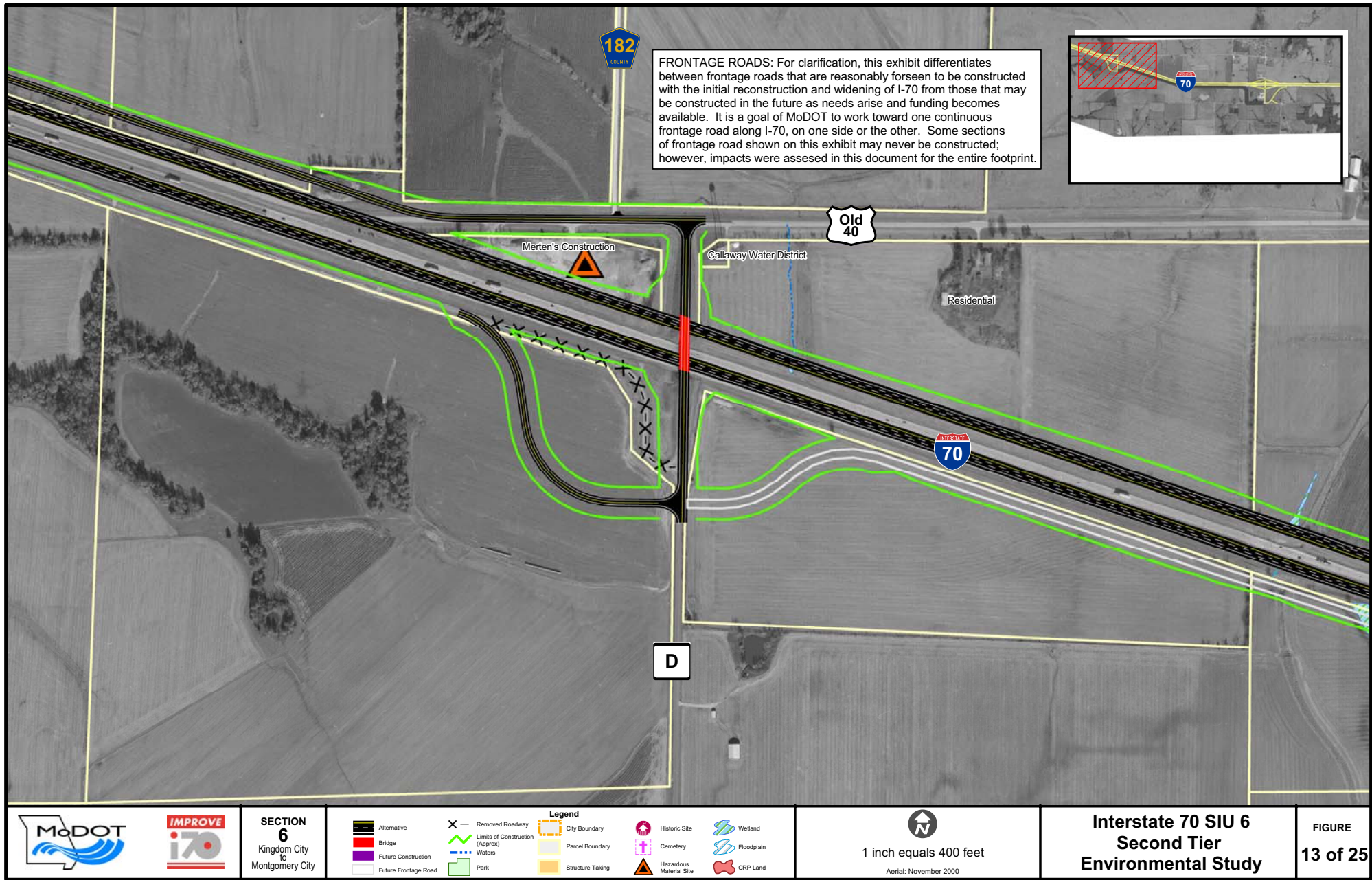




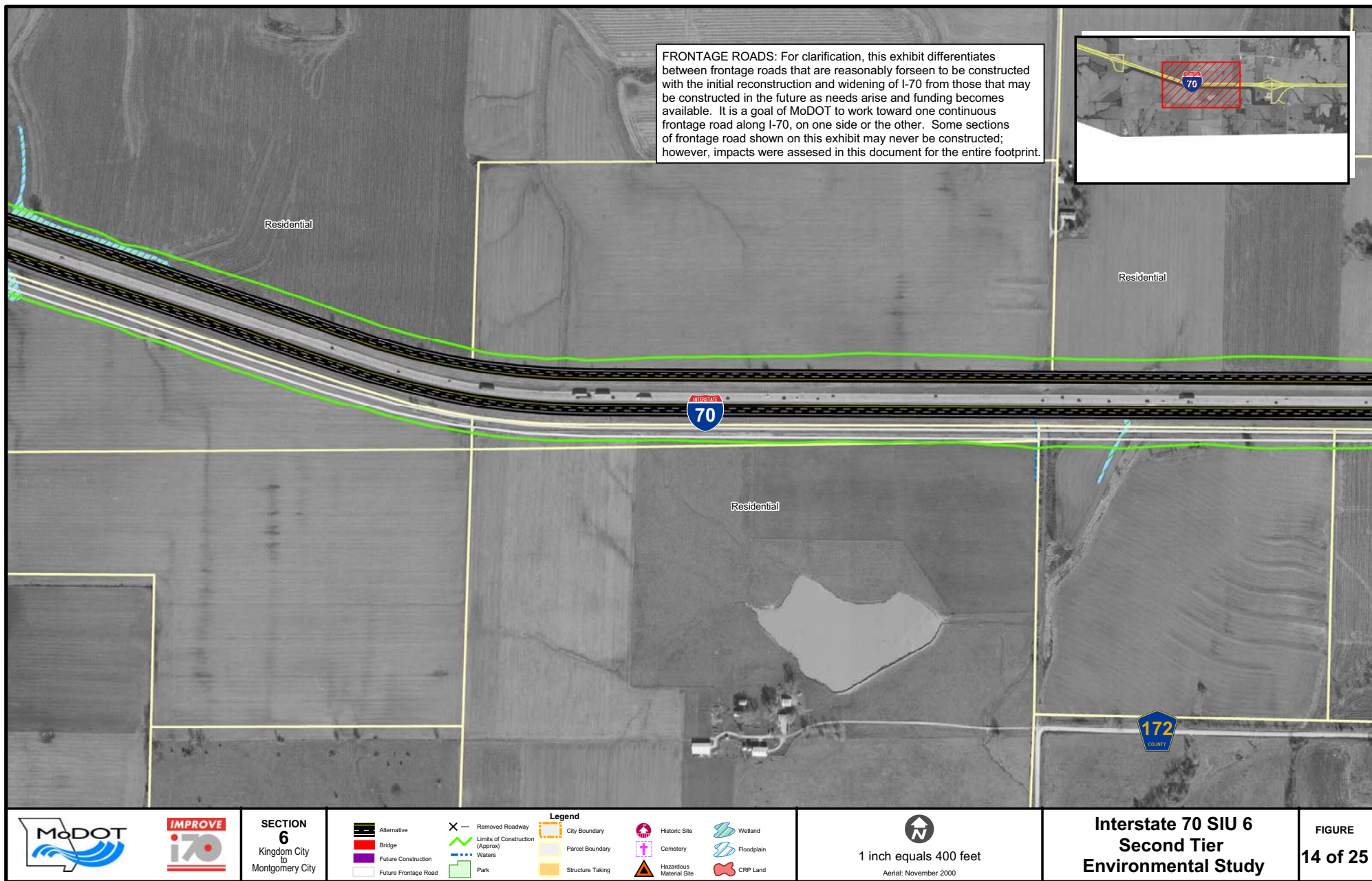




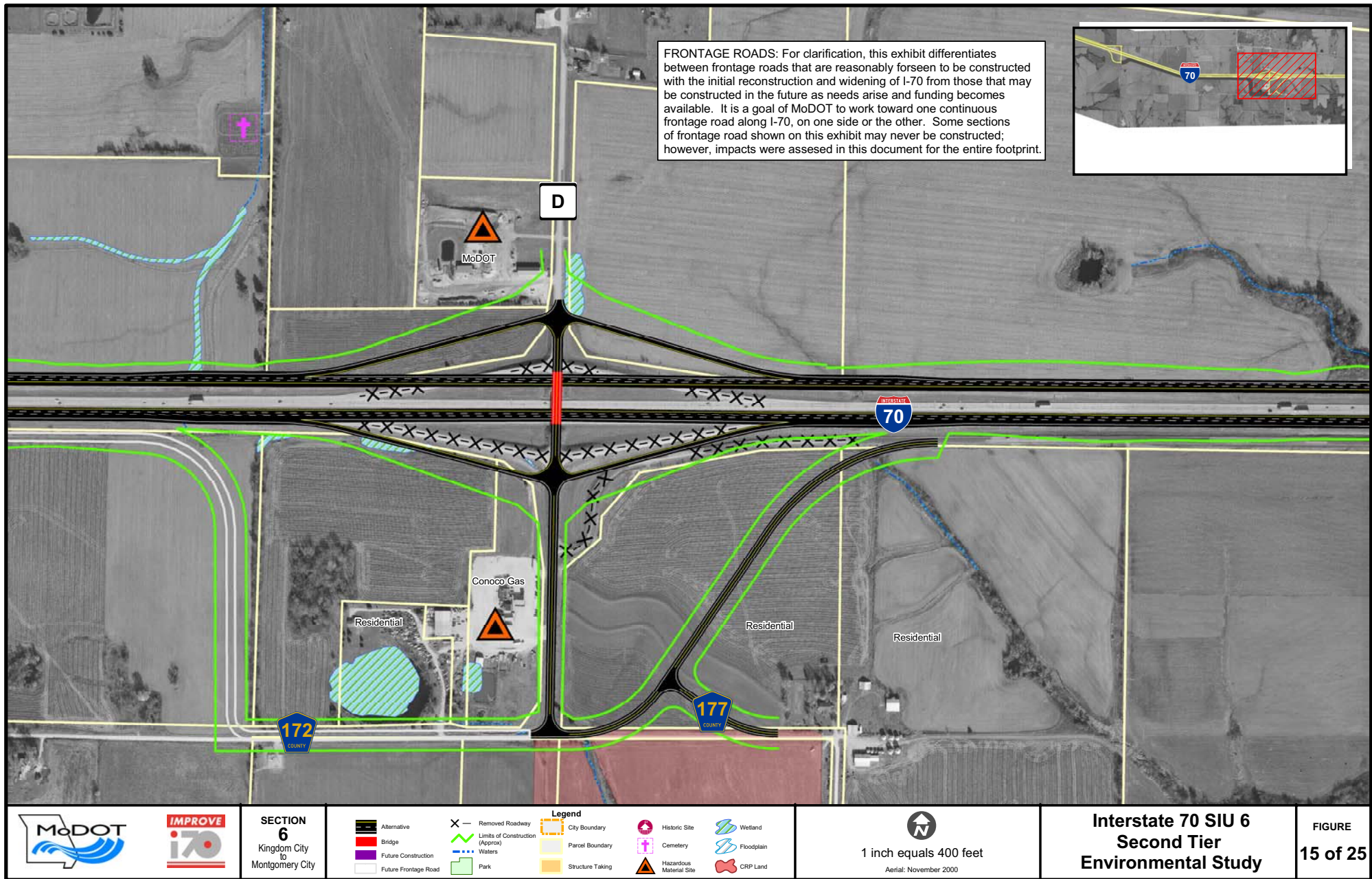




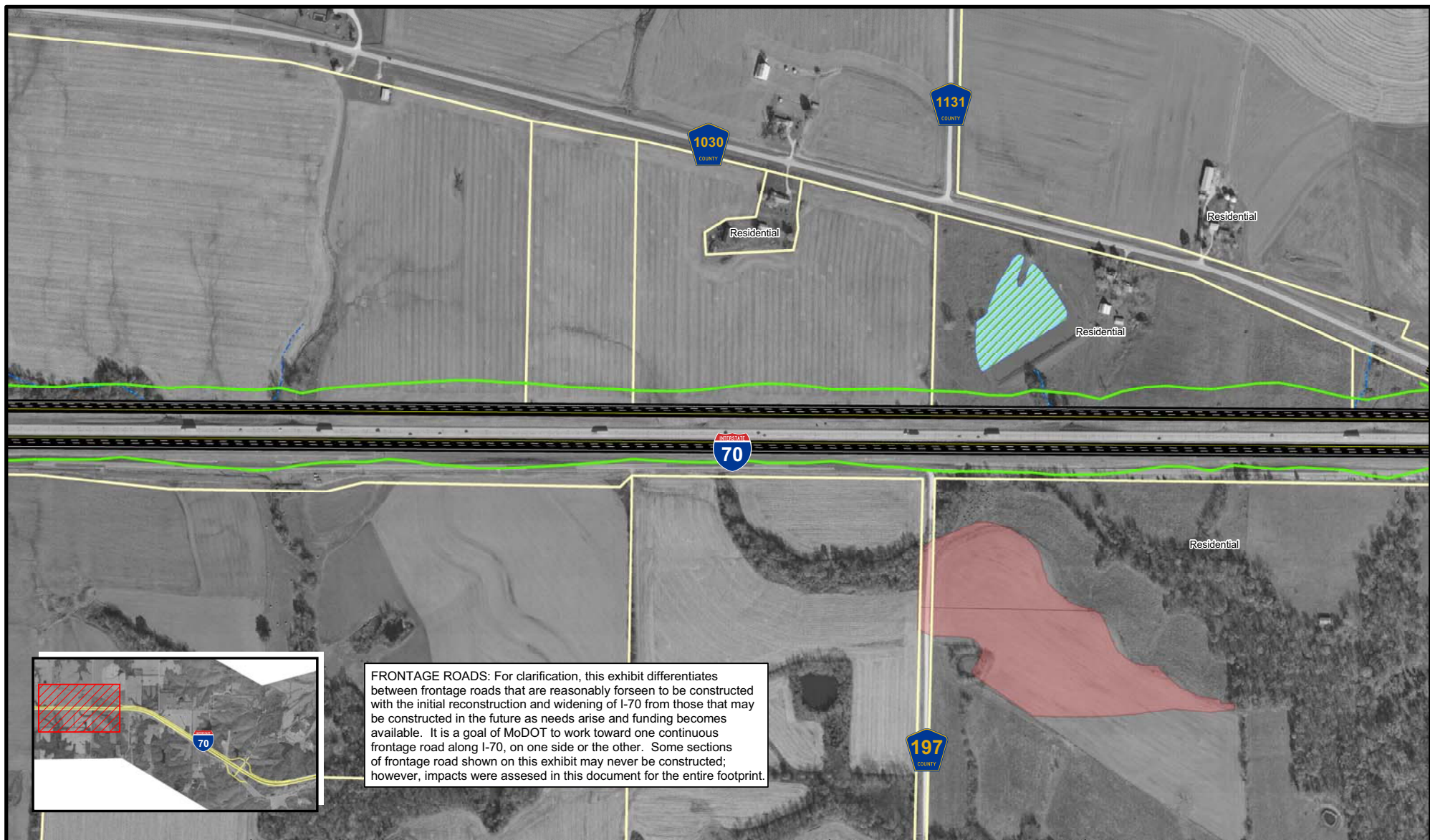












**SECTION 6**  
Kingdom City  
to  
Montgomery City

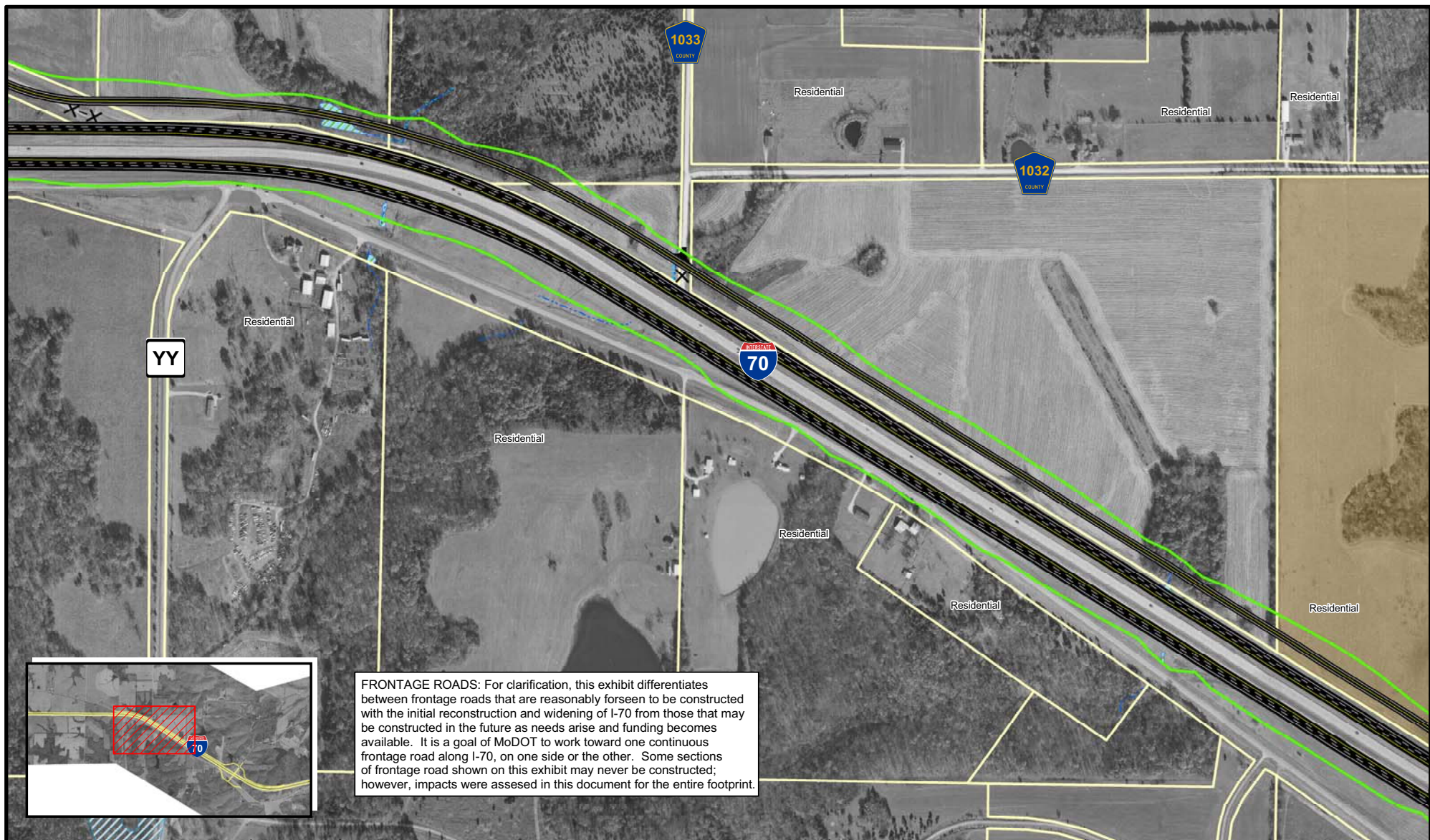


1 inch equals 400 feet  
Aerial: November 2000

**Interstate 70 SIU 6  
Second Tier  
Environmental Study**

**FIGURE  
16 of 25**





**SECTION 6**  
Kingdom City  
to  
Montgomery City

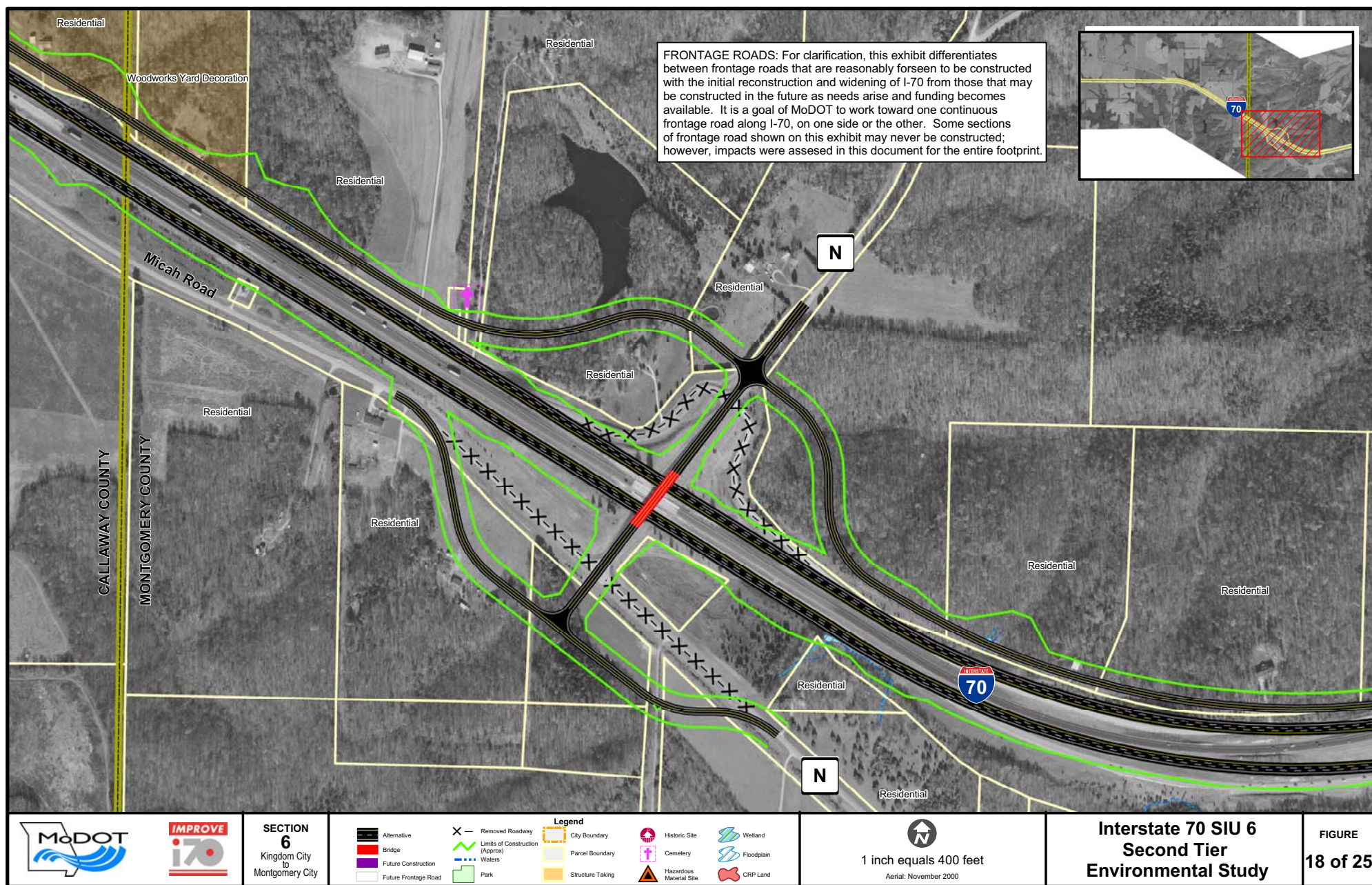
Alternative	Removed Roadway	City Boundary	Historic Site	Wetland
Bridge	Limits of Construction (Approx)	Parcel Boundary	Cemetery	Floodplain
Future Construction	Waters	Structure Taking	Hazardous Material Site	CRP Land
Future Frontage Road	Park			

1 inch equals 400 feet  
Aerial: November 2000

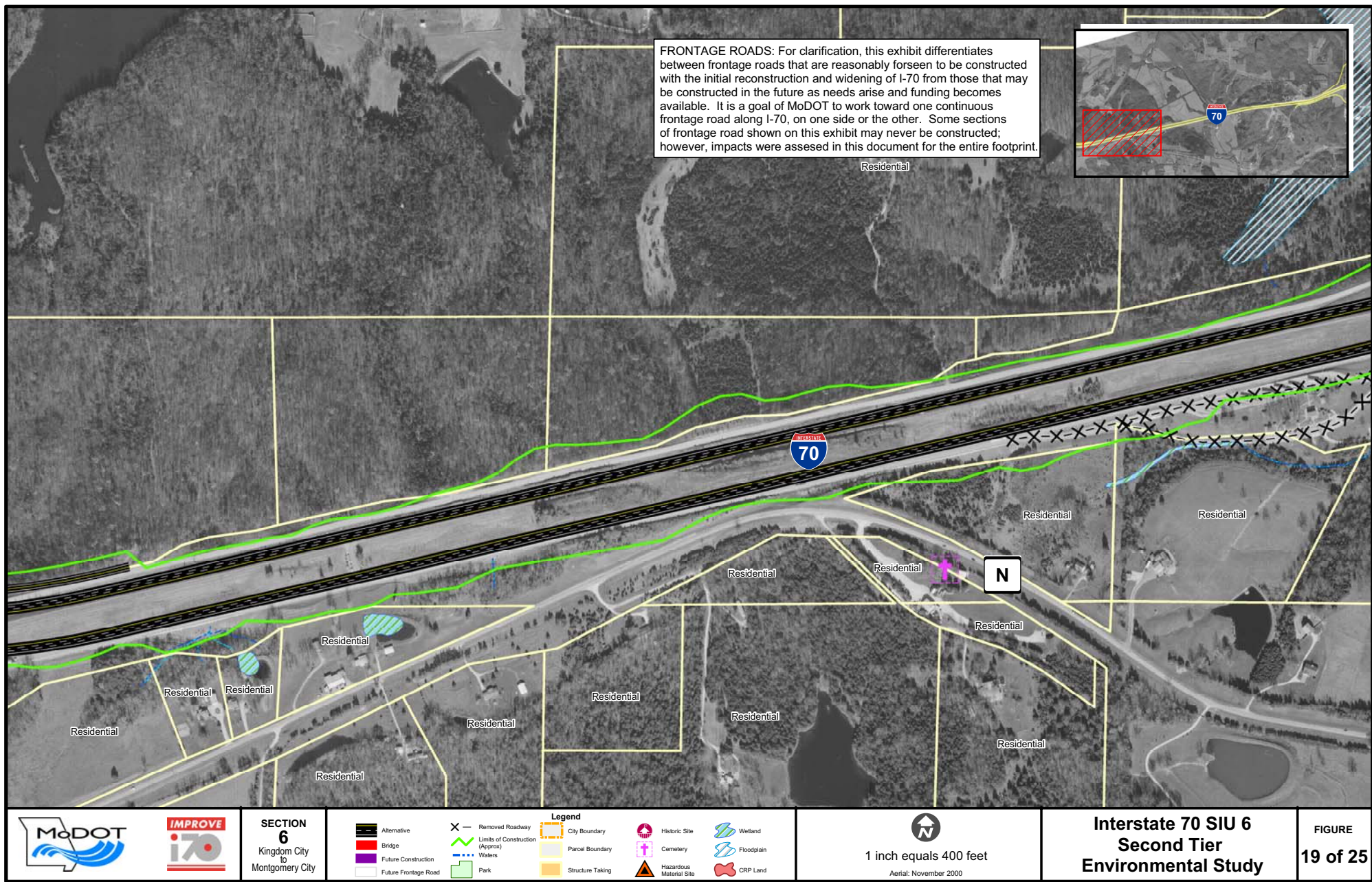
**Interstate 70 SIU 6  
Second Tier  
Environmental Study**

**FIGURE  
17 of 25**

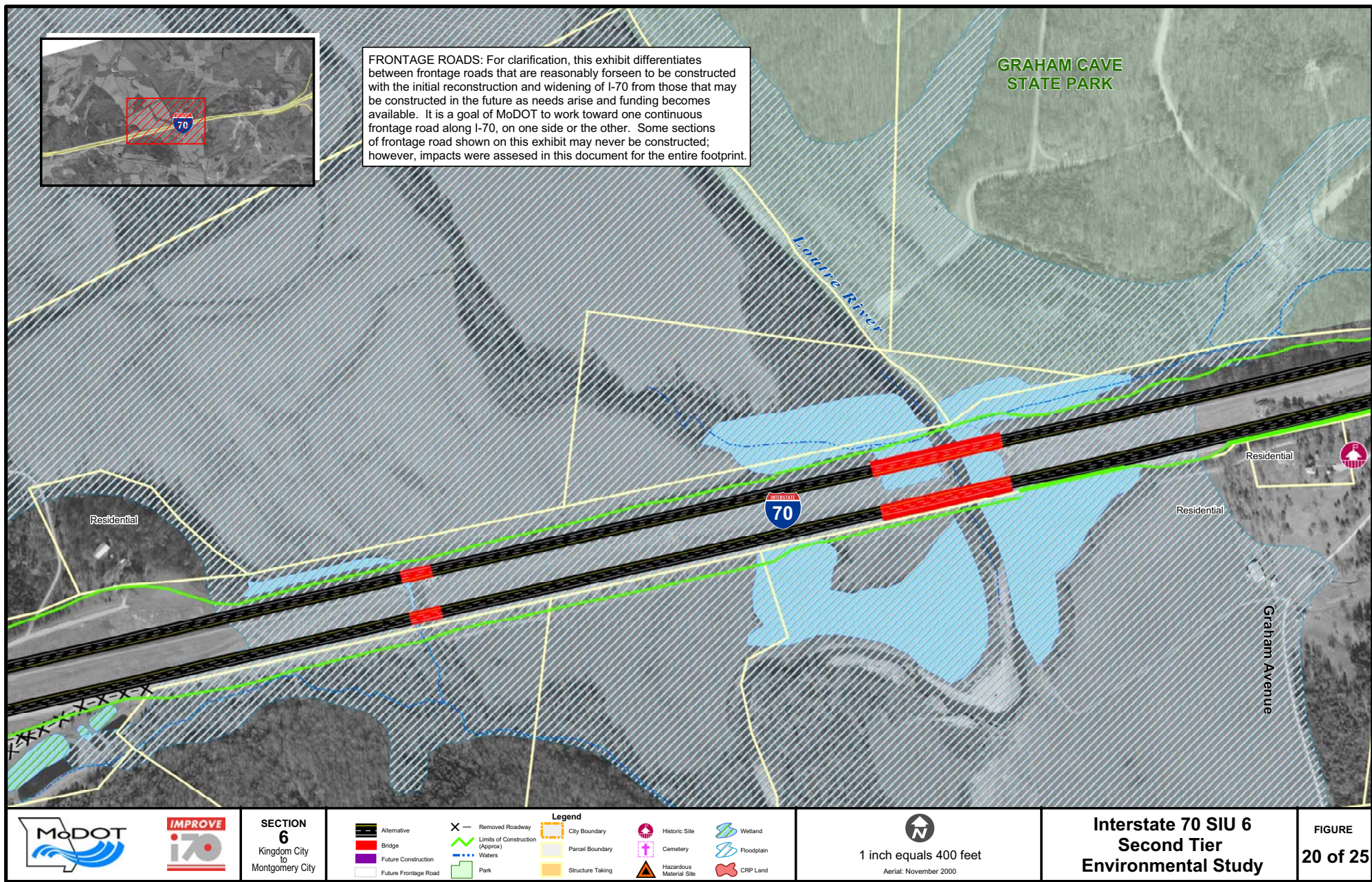




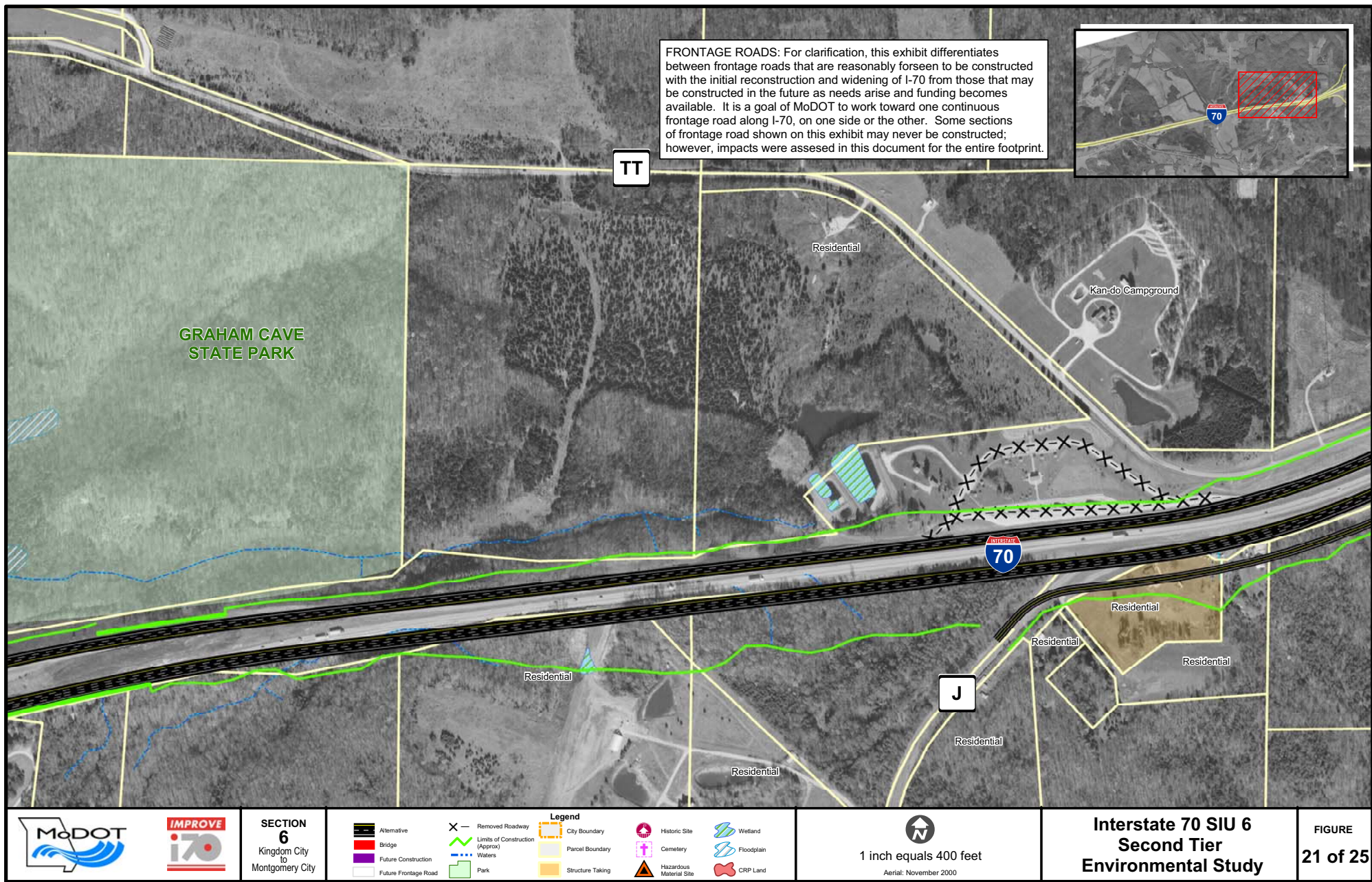




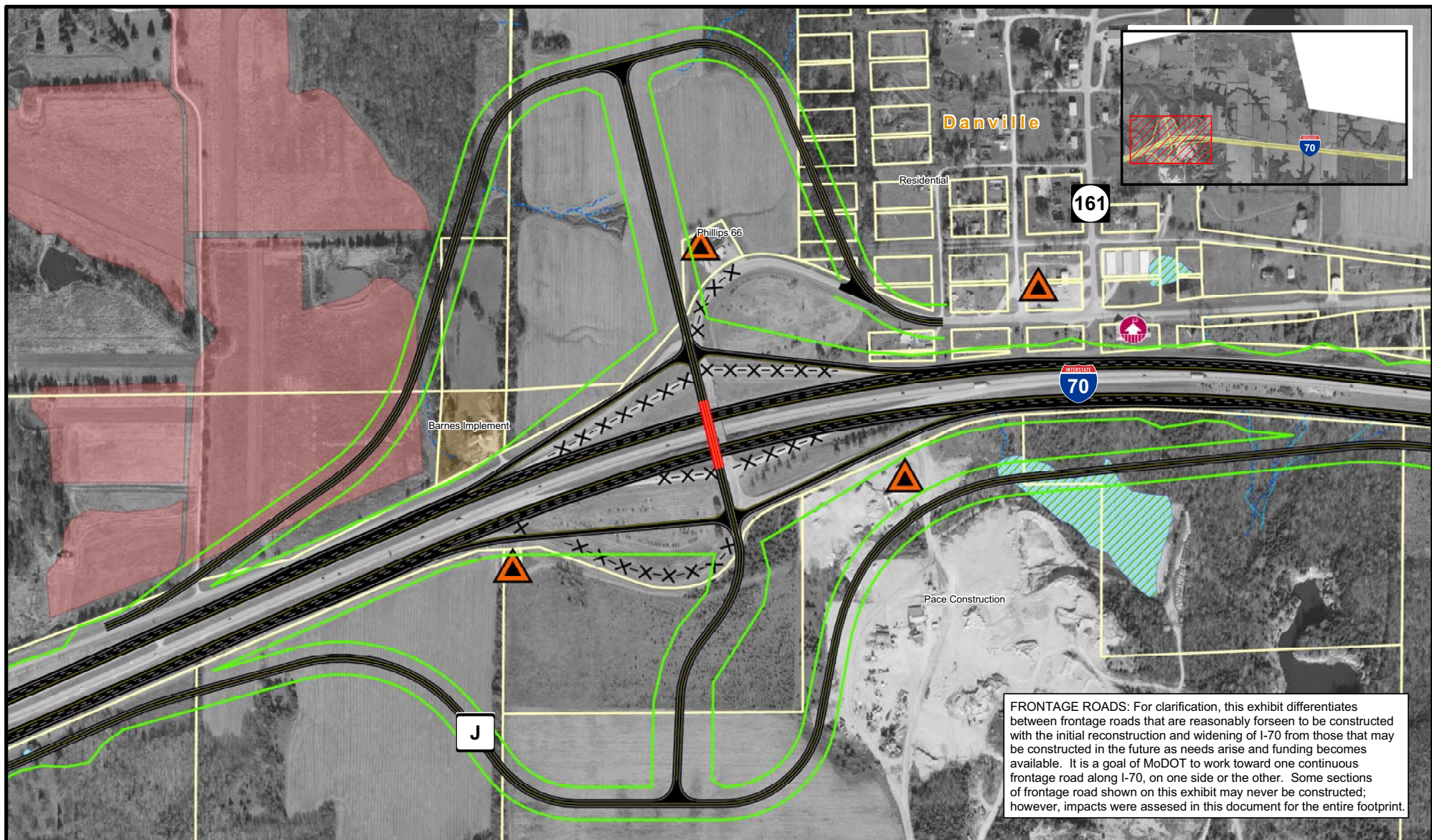












**SECTION 6**  
Kingdom City  
to  
Montgomery City

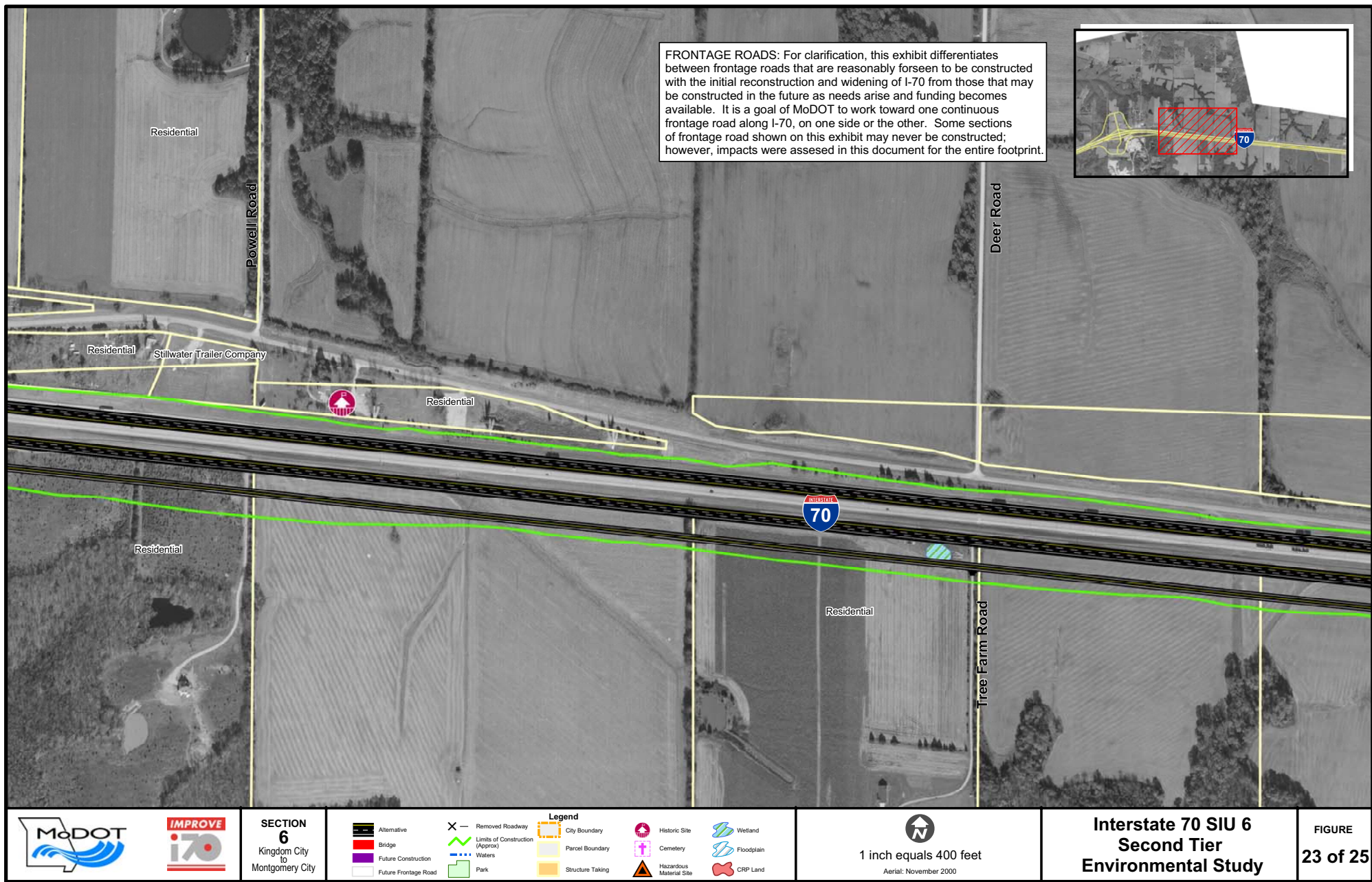
- |  |  |  |  |   |
|--|--|--|--|---|
| <ul style="list-style-type: none"> <li>Alternative</li> <li>Bridge</li> <li>Future Construction</li> <li>Future Frontage Road</li> </ul> | <ul style="list-style-type: none"> <li>Removed Roadway</li> <li>Limits of Construction (Approx)</li> <li>Waters</li> <li>Park</li> </ul> | <ul style="list-style-type: none"> <li>City Boundary</li> <li>Parcel Boundary</li> <li>Structure Taking</li> </ul> | <ul style="list-style-type: none"> <li>Historic Site</li> <li>Cemetery</li> <li>Hazardous Material Site</li> </ul> | <ul style="list-style-type: none"> <li>Wetland</li> <li>Floodplain</li> <li>CRP Land</li> </ul> |
|--|--|--|--|---|

1 inch equals 400 feet  
Aerial: November 2000

**Interstate 70 SIU 6  
Second Tier  
Environmental Study**

**FIGURE  
22 of 25**









**SECTION 6**  
Kingdom City  
to  
Montgomery City

- Alternative
- Bridge
- Future Construction
- Future Frontage Road

- Limits of Construction (Approx)
- Waters
- Park

- Legend**
- City Boundary
  - Parcel Boundary
  - Structure Taking

- Historic Site
- Cemetery
- Hazardous Material Site

- Wetland
- Floodplain
- CRP Land

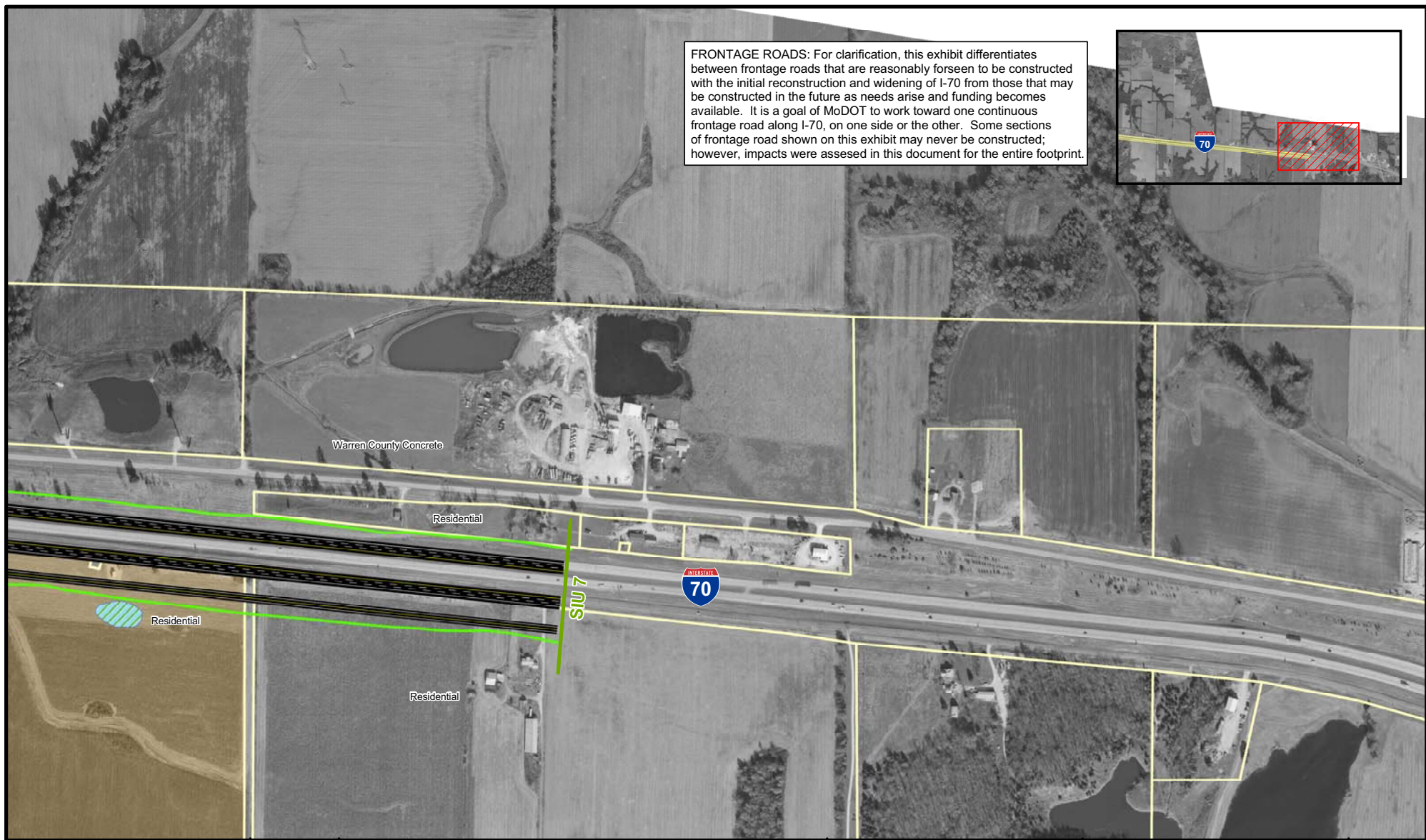
1 inch equals 400 feet  
Aerial: November 2000

**Interstate 70 SIU 6  
Second Tier  
Environmental Study**

**FIGURE  
24 of 25**



**FRONTAGE ROADS:** For clarification, this exhibit differentiates between frontage roads that are reasonably foreseen to be constructed with the initial reconstruction and widening of I-70 from those that may be constructed in the future as needs arise and funding becomes available. It is a goal of MoDOT to work toward one continuous frontage road along I-70, on one side or the other. Some sections of frontage road shown on this exhibit may never be constructed; however, impacts were assessed in this document for the entire footprint.



**SECTION 6**  
Kingdom City  
to  
Montgomery City




1 inch equals 400 feet

Aerial: November 2000

**Interstate 70 SIU 6  
Second Tier  
Environmental Study**

**FIGURE  
25 of 25**