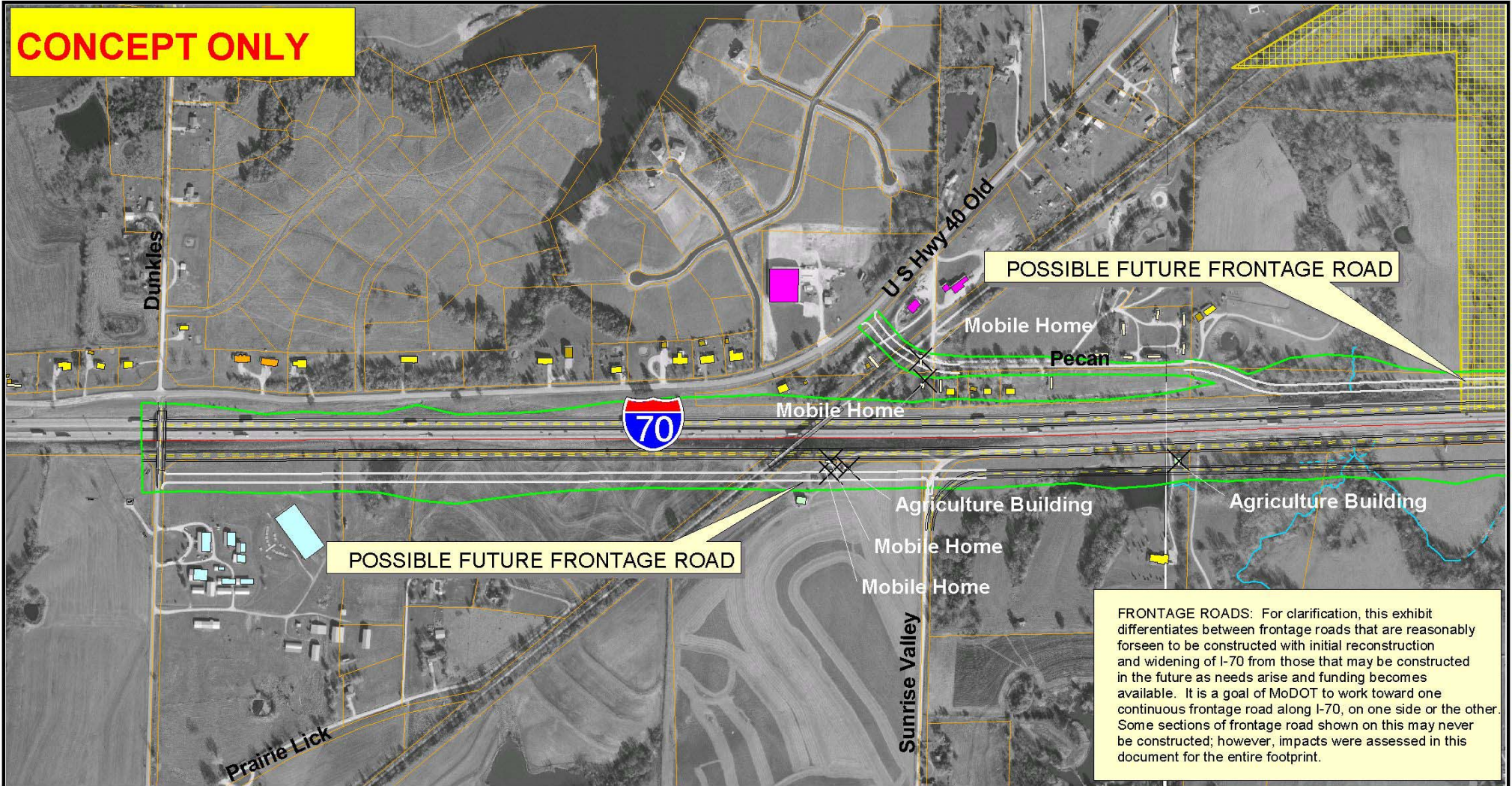


**CONCEPT ONLY**



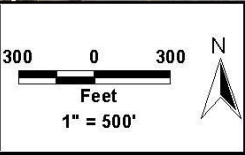
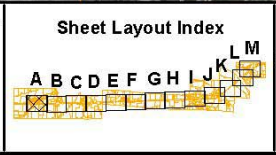
**FRONTAGE ROADS:** For clarification, this exhibit differentiates between frontage roads that are reasonably foreseen to be constructed with initial reconstruction and widening of I-70 from those that may be constructed in the future as needs arise and funding becomes available. It is a goal of MoDOT to work toward one continuous frontage road along I-70, on one side or the other. Some sections of frontage road shown on this may never be constructed; however, impacts were assessed in this document for the entire footprint.



**SECTION 3**  
Boonville to Rocheport

**LEGEND**

Limits of Construction	Lake/Pond	Commercial	School	Structures to be Removed
Edge of Pavement	City Limits	Industrial	Single Family	
I-70 Center Line	Agriculture	Multifamily	Garage	
County Line	Church	Public/Semi-Public	Mobile Home	
River/Stream	Utility	Billboard	Property Boundary	

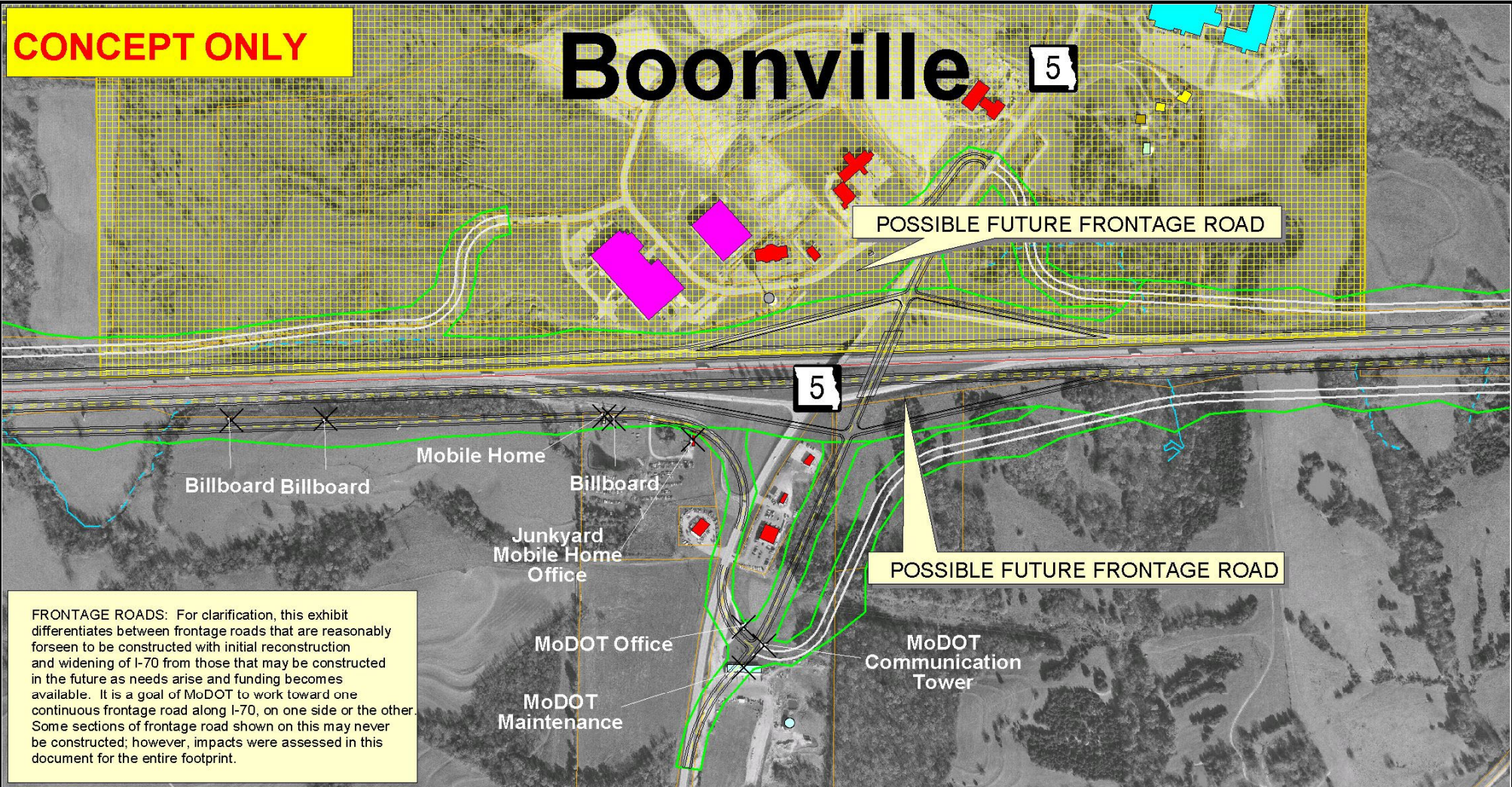


**Figure III-2A**  
Displacements  
Cooper & Boone  
Counties, Missouri



**CONCEPT ONLY**

# Boonville 5

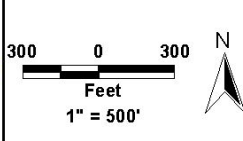
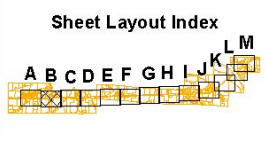


**FRONTAGE ROADS:** For clarification, this exhibit differentiates between frontage roads that are reasonably foreseen to be constructed with initial reconstruction and widening of I-70 from those that may be constructed in the future as needs arise and funding becomes available. It is a goal of MoDOT to work toward one continuous frontage road along I-70, on one side or the other. Some sections of frontage road shown on this may never be constructed; however, impacts were assessed in this document for the entire footprint.



**SECTION 3**  
*Boonville to Rocheport*

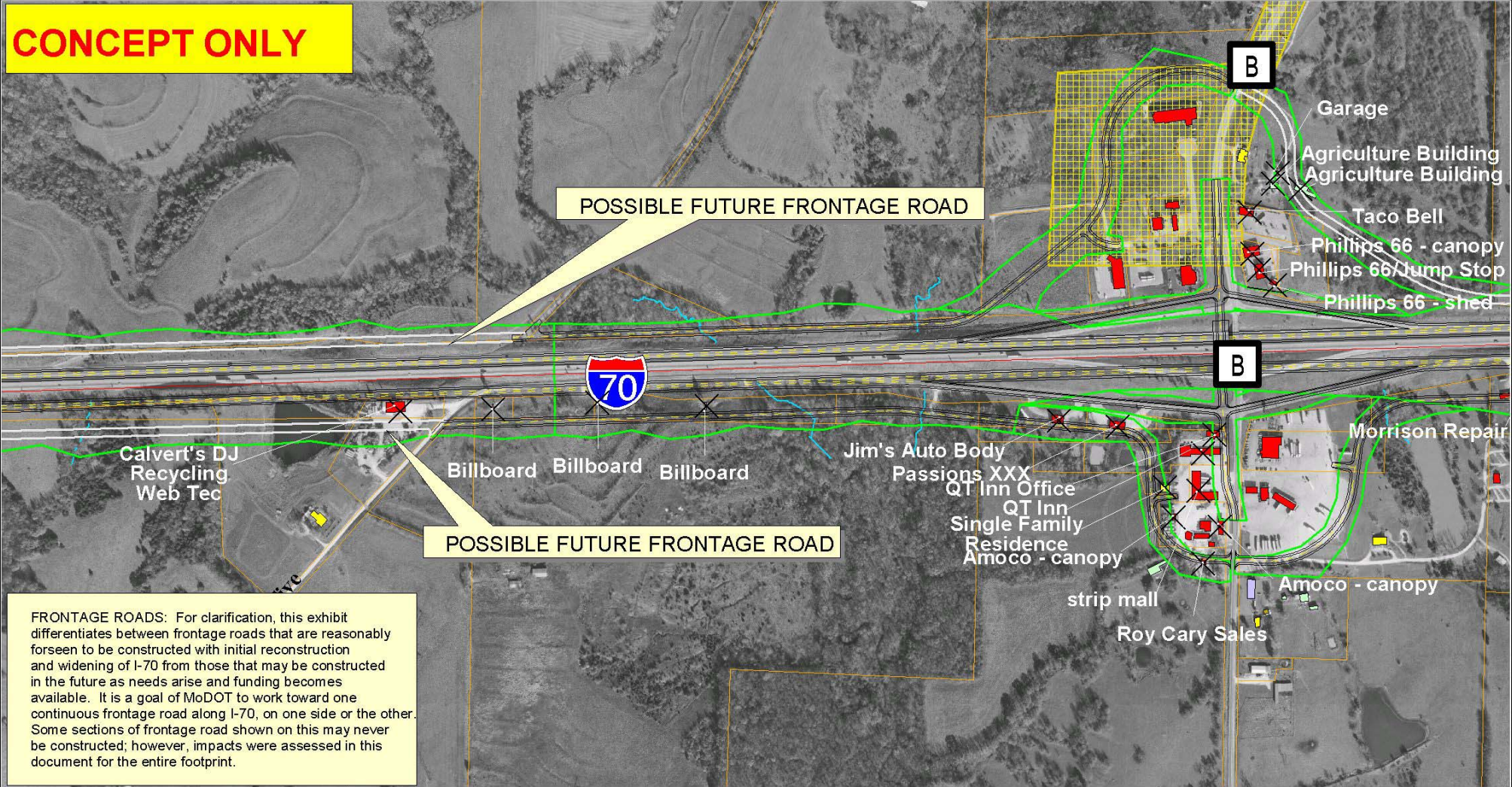
LEGEND			
Limits of Construction	Lake/Pond	Commercial	School
Edge of Pavement	City Limits	Industrial	Single Family
I-70 Center Line	Agriculture	Multifamily	Garage
County Line	Church	Public/Semi-Public	Mobile Home
River/Stream	Utility	Billboard	Property Boundary
		Structures to be Removed	



**Figure III-2B**  
**Displacements**  
**Cooper & Boone**  
**Counties, Missouri**



# CONCEPT ONLY

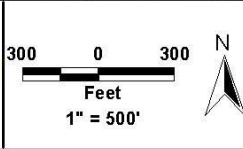
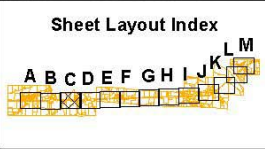


**FRONTAGE ROADS:** For clarification, this exhibit differentiates between frontage roads that are reasonably foreseen to be constructed with initial reconstruction and widening of I-70 from those that may be constructed in the future as needs arise and funding becomes available. It is a goal of MoDOT to work toward one continuous frontage road along I-70, on one side or the other. Some sections of frontage road shown on this may never be constructed; however, impacts were assessed in this document for the entire footprint.



**SECTION 3**  
Boonville to Rocheport

LEGEND			
Limits of Construction	Lake/Pond	Commercial	School
Edge of Pavement	City Limits	Industrial	Single Family
I-70 Center Line	Agriculture	Multifamily	Garage
County Line	Church	Public/Semi-Public	Mobile Home
River/Stream	Utility	Billboard	Property Boundary
		Structures to be Removed	



**Figure III-2C**  
Displacements  
Cooper & Boone  
Counties, Missouri







**CONCEPT ONLY**

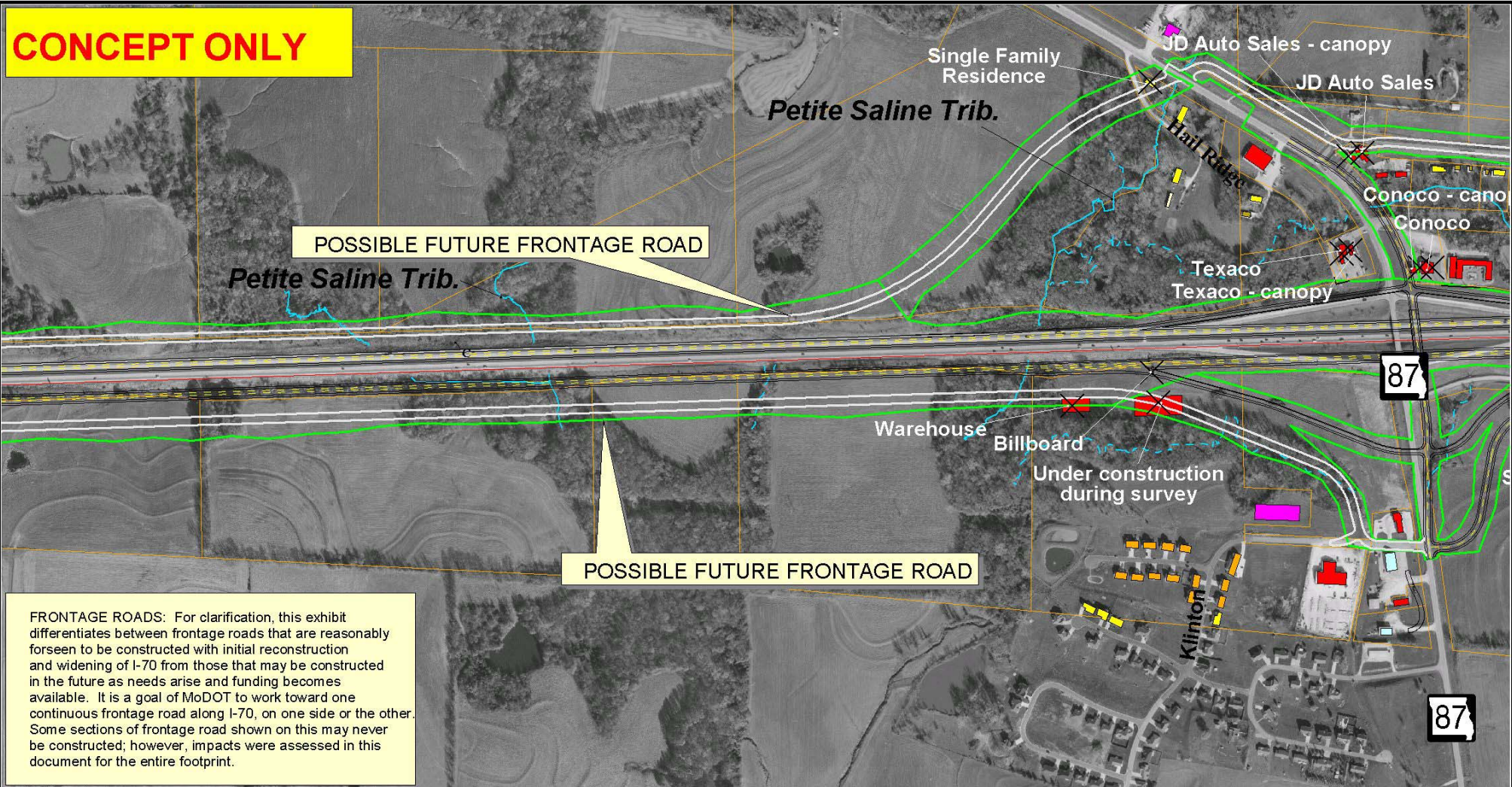
POSSIBLE FUTURE FRONTAGE ROAD

Petite Saline Trib.

Petite Saline Trib.

POSSIBLE FUTURE FRONTAGE ROAD

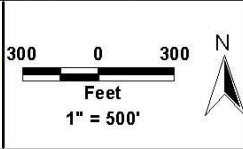
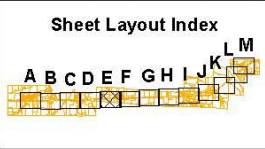
**FRONTAGE ROADS:** For clarification, this exhibit differentiates between frontage roads that are reasonably foreseen to be constructed with initial reconstruction and widening of I-70 from those that may be constructed in the future as needs arise and funding becomes available. It is a goal of MoDOT to work toward one continuous frontage road along I-70, on one side or the other. Some sections of frontage road shown on this may never be constructed; however, impacts were assessed in this document for the entire footprint.



**SECTION 3**  
Boonville to Rocheport

**LEGEND**

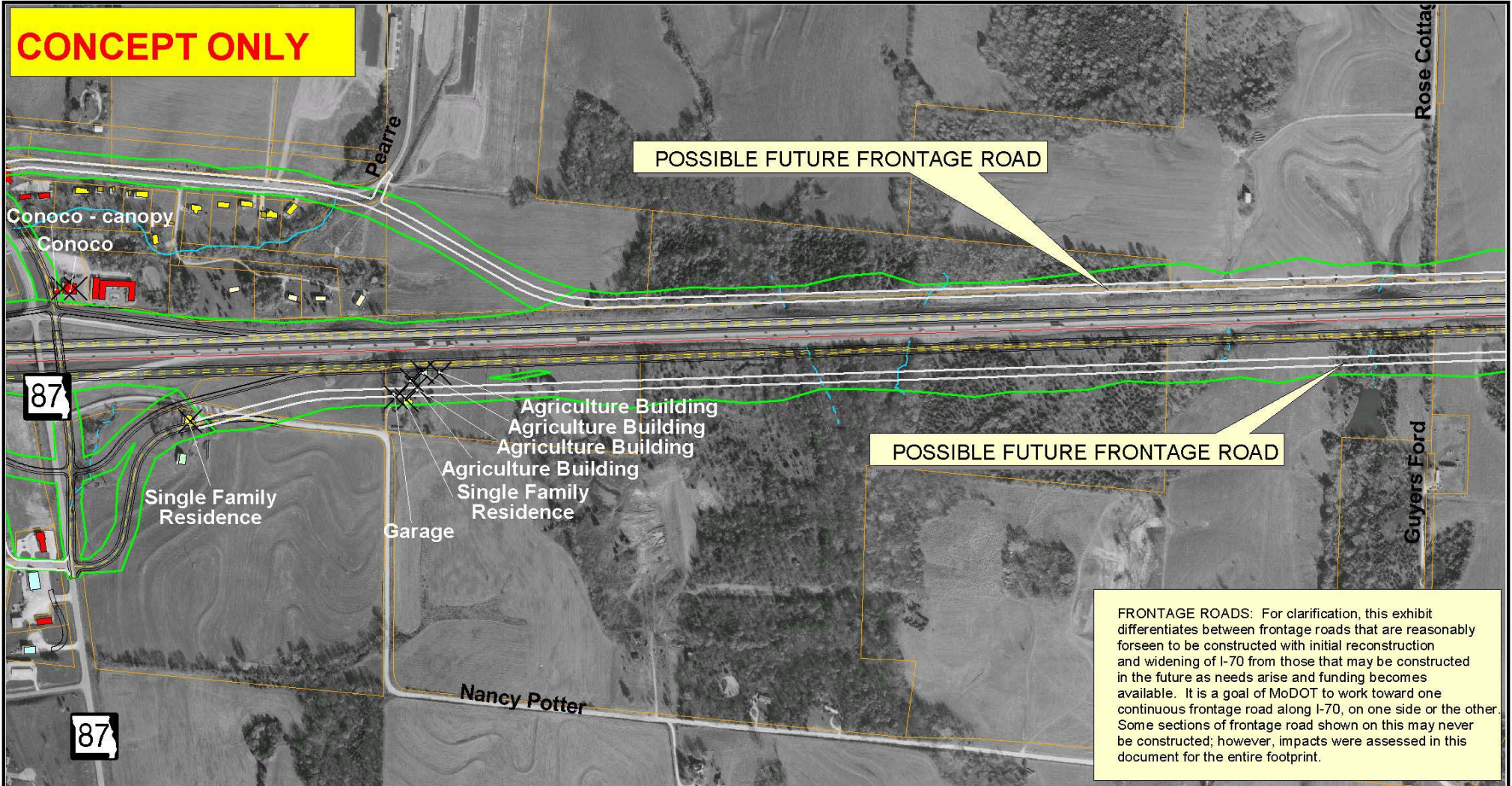
Limits of Construction	Lake/Pond	Commercial	School	Structures to be Removed
Edge of Pavement	City Limits	Industrial	Single Family	
I-70 Center Line	Agriculture	Multifamily	Garage	
County Line	Church	Public/Semi-Public	Mobile Home	
River/Stream	Utility	Billboard	Property Boundary	



**Figure III-2E**  
Displacements  
Cooper & Boone  
Counties, Missouri



**CONCEPT ONLY**



POSSIBLE FUTURE FRONTAGE ROAD

POSSIBLE FUTURE FRONTAGE ROAD

**FRONTAGE ROADS:** For clarification, this exhibit differentiates between frontage roads that are reasonably foreseen to be constructed with initial reconstruction and widening of I-70 from those that may be constructed in the future as needs arise and funding becomes available. It is a goal of MoDOT to work toward one continuous frontage road along I-70, on one side or the other. Some sections of frontage road shown on this may never be constructed; however, impacts were assessed in this document for the entire footprint.

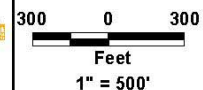


**SECTION 3**  
Boonville to Rocheport

**LEGEND**

Limits of Construction	Lake/Pond	Commercial	School	Structures to be Removed
Edge of Pavement	City Limits	Industrial	Single Family	
I-70 Center Line	Agriculture	Multifamily	Garage	
County Line	Church	Public/Semi-Public	Mobile Home	
River/Stream	Utility	Billboard	Property Boundary	

**Sheet Layout Index**



**Figure III-2F**  
Displacements  
Cooper & Boone  
Counties, Missouri

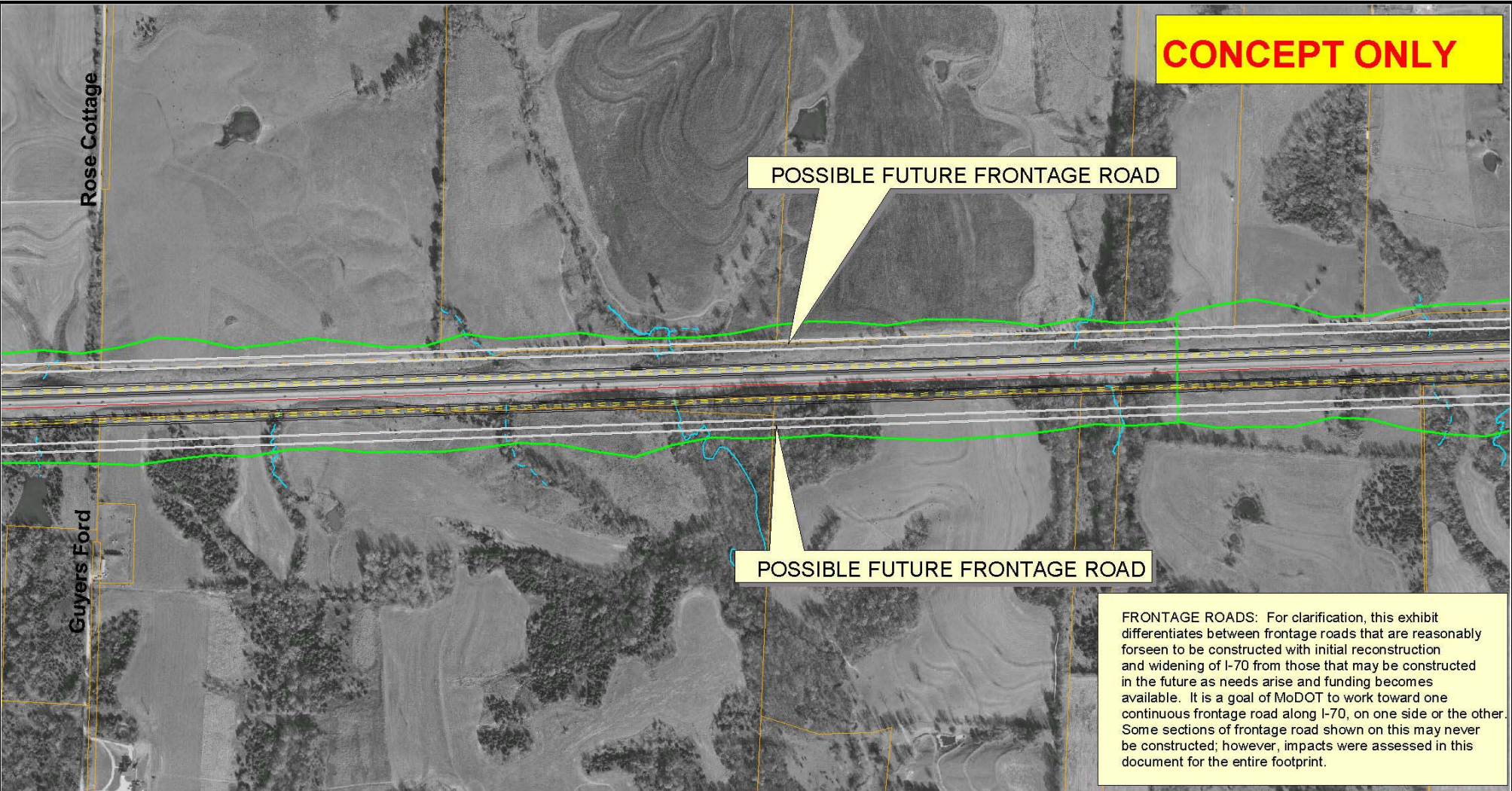


**CONCEPT ONLY**

POSSIBLE FUTURE FRONTAGE ROAD

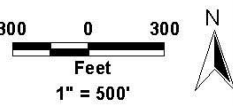
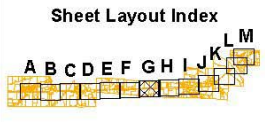
POSSIBLE FUTURE FRONTAGE ROAD

**FRONTAGE ROADS:** For clarification, this exhibit differentiates between frontage roads that are reasonably foreseen to be constructed with initial reconstruction and widening of I-70 from those that may be constructed in the future as needs arise and funding becomes available. It is a goal of MoDOT to work toward one continuous frontage road along I-70, on one side or the other. Some sections of frontage road shown on this may never be constructed; however, impacts were assessed in this document for the entire footprint.



**SECTION 3**  
Boonville to Rocheport

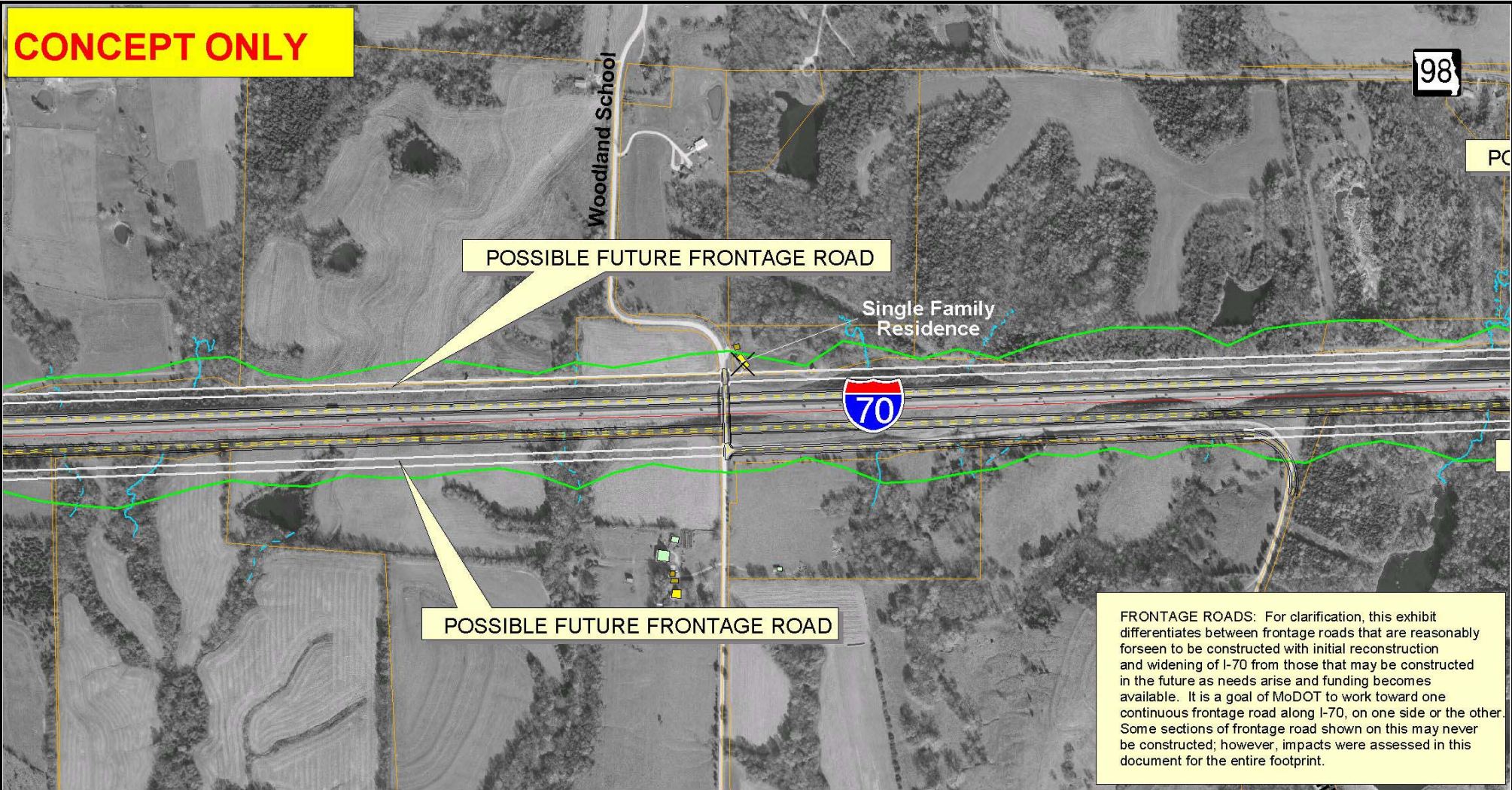
LEGEND					
	Limits of Construction		Lake/Pond		Commercial
	Edge of Pavement		City Limits		School
	I-70 Center Line		Agriculture		Single Family
	County Line		Church		Multifamily
	River/Stream		Utility		Public/Semi-Public
					Garage
					Mobile Home
					Billboard
					Property Boundary
					Structures to be Removed



**Figure III-2G**  
Displacements  
Cooper & Boone  
Counties, Missouri



**CONCEPT ONLY**

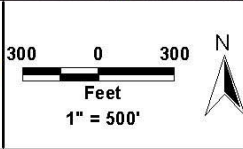
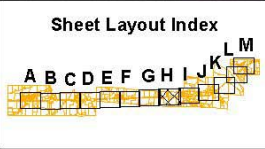


**FRONTAGE ROADS:** For clarification, this exhibit differentiates between frontage roads that are reasonably foreseen to be constructed with initial reconstruction and widening of I-70 from those that may be constructed in the future as needs arise and funding becomes available. It is a goal of MoDOT to work toward one continuous frontage road along I-70, on one side or the other. Some sections of frontage road shown on this may never be constructed; however, impacts were assessed in this document for the entire footprint.



**SECTION 3**  
Boonville to Rocheport

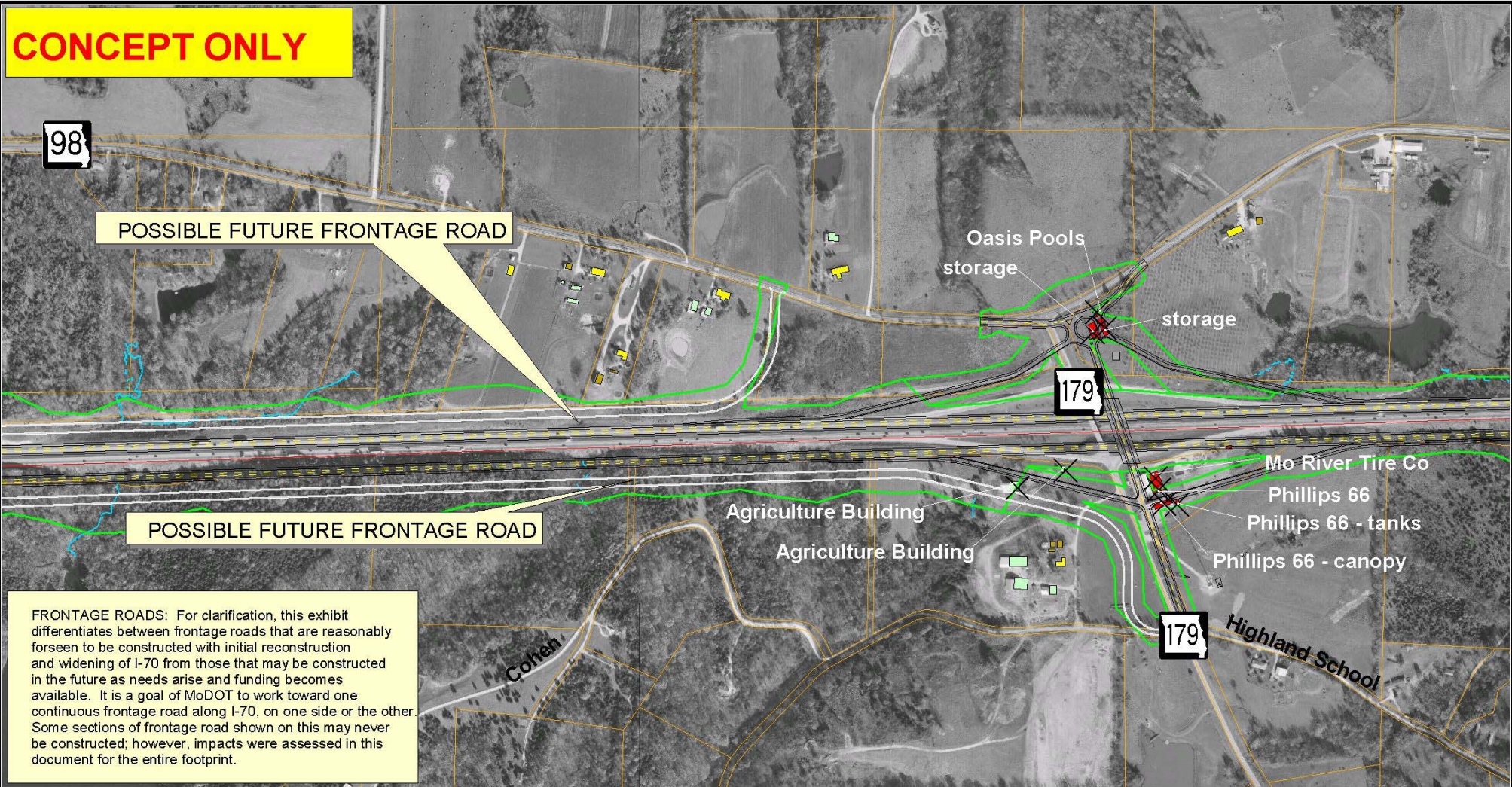
LEGEND					
Limits of Construction	Lake/Pond	Commercial	School	Structures to be Removed	
Edge of Pavement	City Limits	Industrial	Single Family		
I-70 Center Line	Agriculture	Multifamily	Garage		
County Line	Church	Public/Semi-Public	Mobile Home		
River/Stream	Utility	Billboard	Property Boundary		



**Figure III-2H**  
Displacements  
Cooper & Boone  
Counties, Missouri



# CONCEPT ONLY

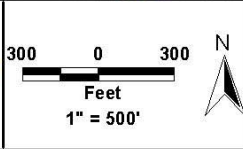
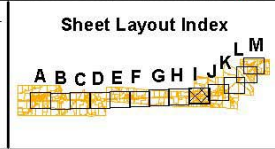


**FRONTAGE ROADS:** For clarification, this exhibit differentiates between frontage roads that are reasonably foreseen to be constructed with initial reconstruction and widening of I-70 from those that may be constructed in the future as needs arise and funding becomes available. It is a goal of MoDOT to work toward one continuous frontage road along I-70, on one side or the other. Some sections of frontage road shown on this may never be constructed; however, impacts were assessed in this document for the entire footprint.



**SECTION 3**  
Boonville to Rocheport

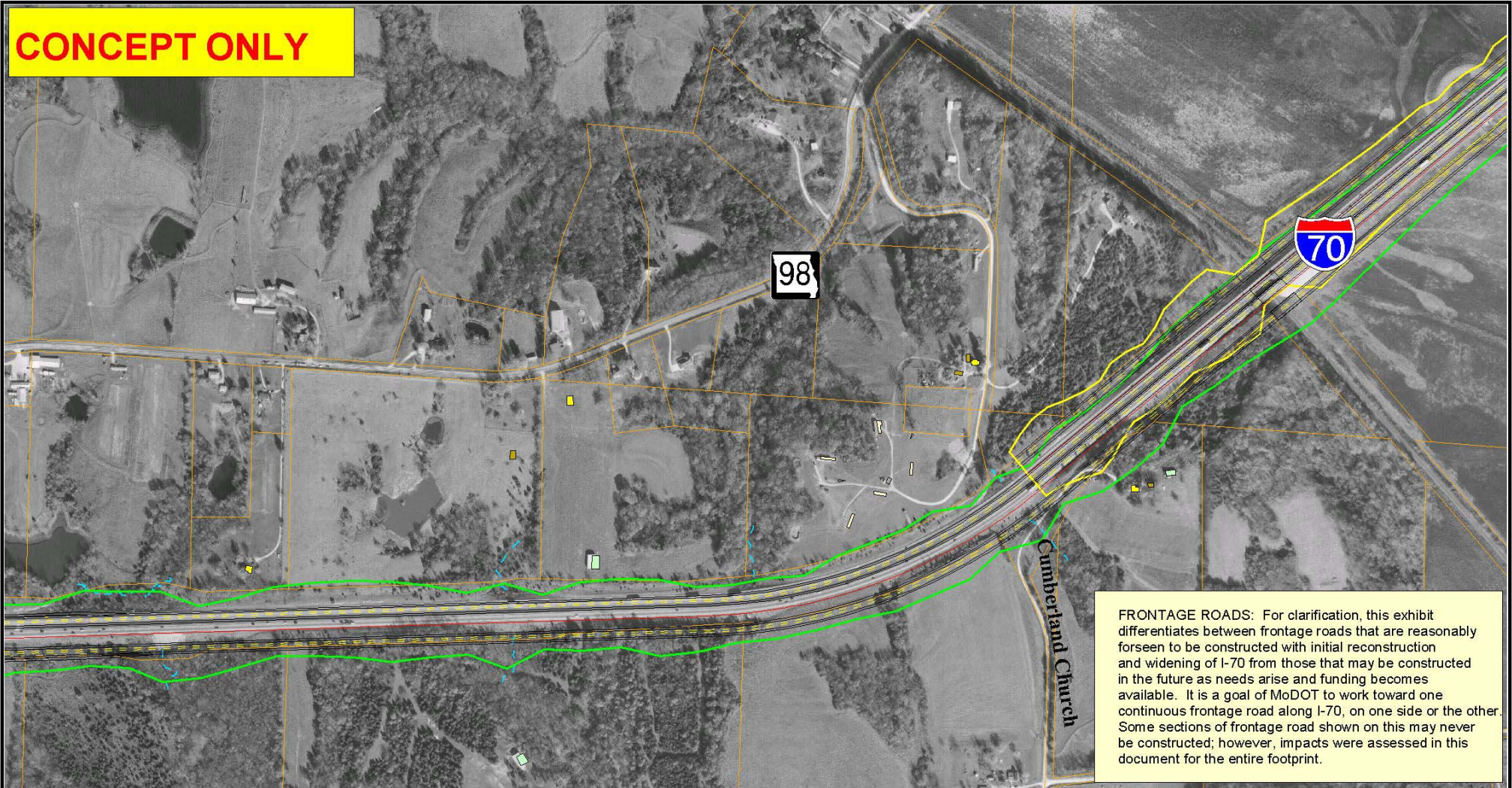
LEGEND					
Limits of Construction	Lake/Pond	Commercial	School	Structures to be Removed	
Edge of Pavement	City Limits	Industrial	Single Family		
I-70 Center Line	Agriculture	Multifamily	Garage		
County Line	Church	Public/Semi-Public	Mobile Home		
River/Stream	Utility	Billboard	Property Boundary		



**Figure III-21**  
Displacements  
Cooper & Boone  
Counties, Missouri



**CONCEPT ONLY**

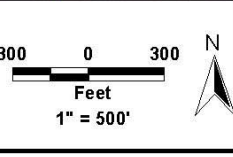
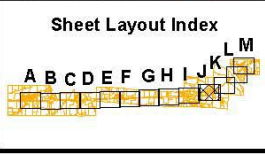


**FRONTAGE ROADS:** For clarification, this exhibit differentiates between frontage roads that are reasonably foreseen to be constructed with initial reconstruction and widening of I-70 from those that may be constructed in the future as needs arise and funding becomes available. It is a goal of MoDOT to work toward one continuous frontage road along I-70, on one side or the other. Some sections of frontage road shown on this may never be constructed; however, impacts were assessed in this document for the entire footprint.



**SECTION 3**  
*Boonville to Rocheport*

LEGEND			
North Alternate LOC	Lake/Pond	Commercial	School
South Alternate LOC	City Limits	Industrial	Single Family
Edge of Pavement	Agriculture	Multifamily	Garage
I-70 Center Line	Church	Public/Semi-Public	Mobile Home
County Line	Utility	Billboard	Property Boundary
River/Stream			Structures to be Removed



**Figure III-2J**  
**Displacements**  
**Cooper & Boone**  
**Counties, Missouri**



**CONCEPT ONLY**

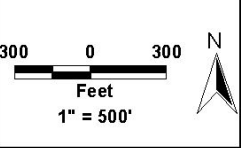
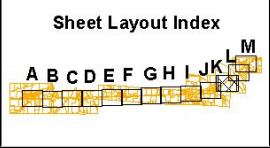


**FRONTAGE ROADS:** For clarification, this exhibit differentiates between frontage roads that are reasonably foreseen to be constructed with initial reconstruction and widening of I-70 from those that may be constructed in the future as needs arise and funding becomes available. It is a goal of MoDOT to work toward one continuous frontage road along I-70, on one side or the other. Some sections of frontage road shown on this may never be constructed; however, impacts were assessed in this document for the entire footprint.



**SECTION 3**  
*Boonville to Rocheport*

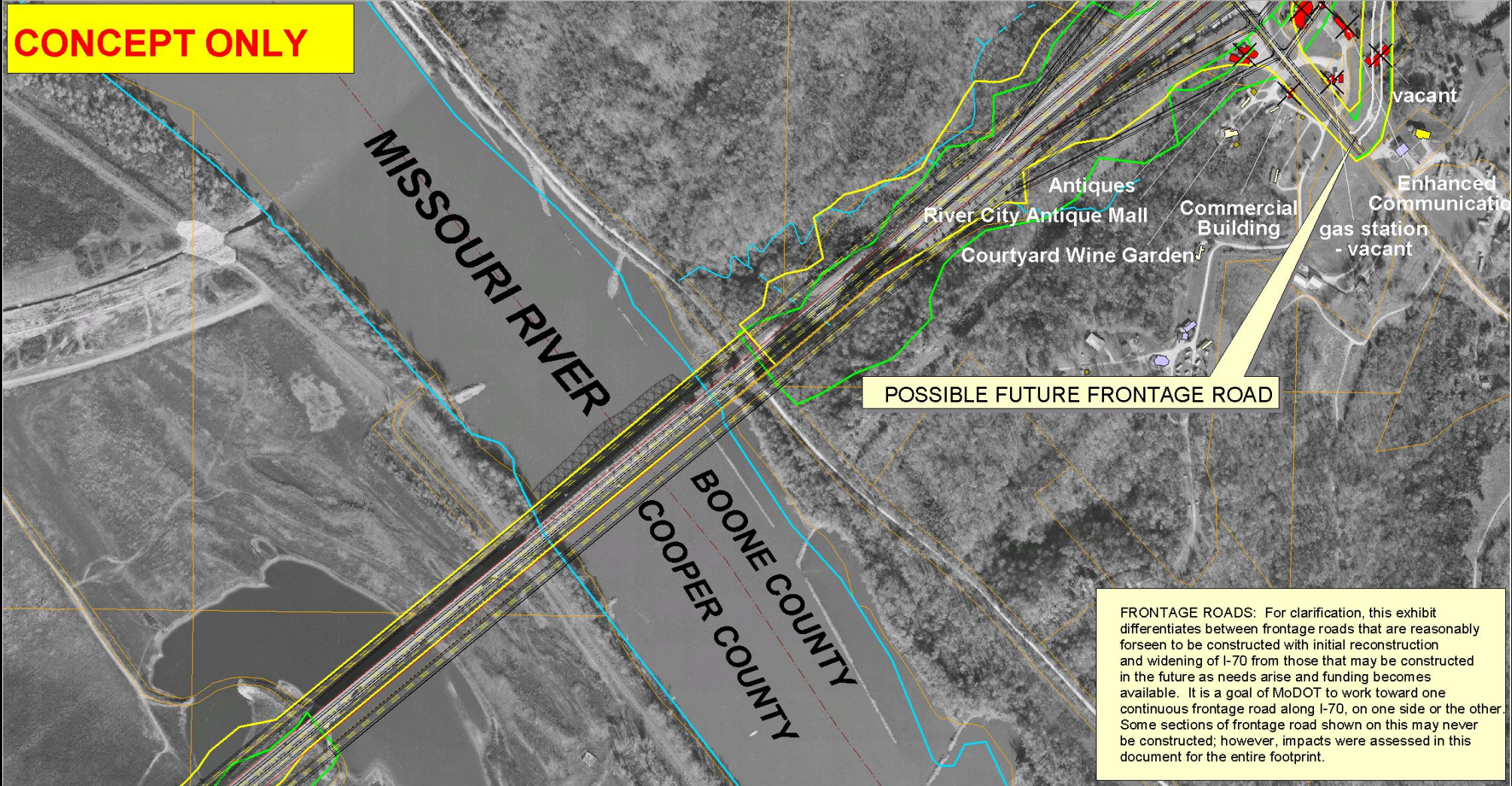
LEGEND					
North Alternate LOC	Lake/Pond	Commercial	School	Structures to be Removed	
South Alternate LOC	City Limits	Industrial	Single Family		
Edge of Pavement	Agriculture	Multifamily	Garage		
I-70 Center Line	Church	Public/Semi-Public	Mobile Home		
County Line	Utility	Billboard	Property Boundary		
River/Stream					



**Figure III-2K**  
**Displacements**  
**Cooper & Boone**  
**Counties, Missouri**



**CONCEPT ONLY**

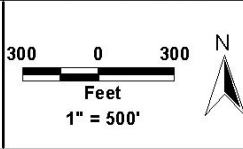
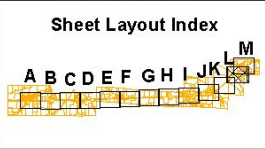


**FRONTAGE ROADS:** For clarification, this exhibit differentiates between frontage roads that are reasonably foreseen to be constructed with initial reconstruction and widening of I-70 from those that may be constructed in the future as needs arise and funding becomes available. It is a goal of MoDOT to work toward one continuous frontage road along I-70, on one side or the other. Some sections of frontage road shown on this may never be constructed; however, impacts were assessed in this document for the entire footprint.



**SECTION 3**  
*Boonville to Rocheport*

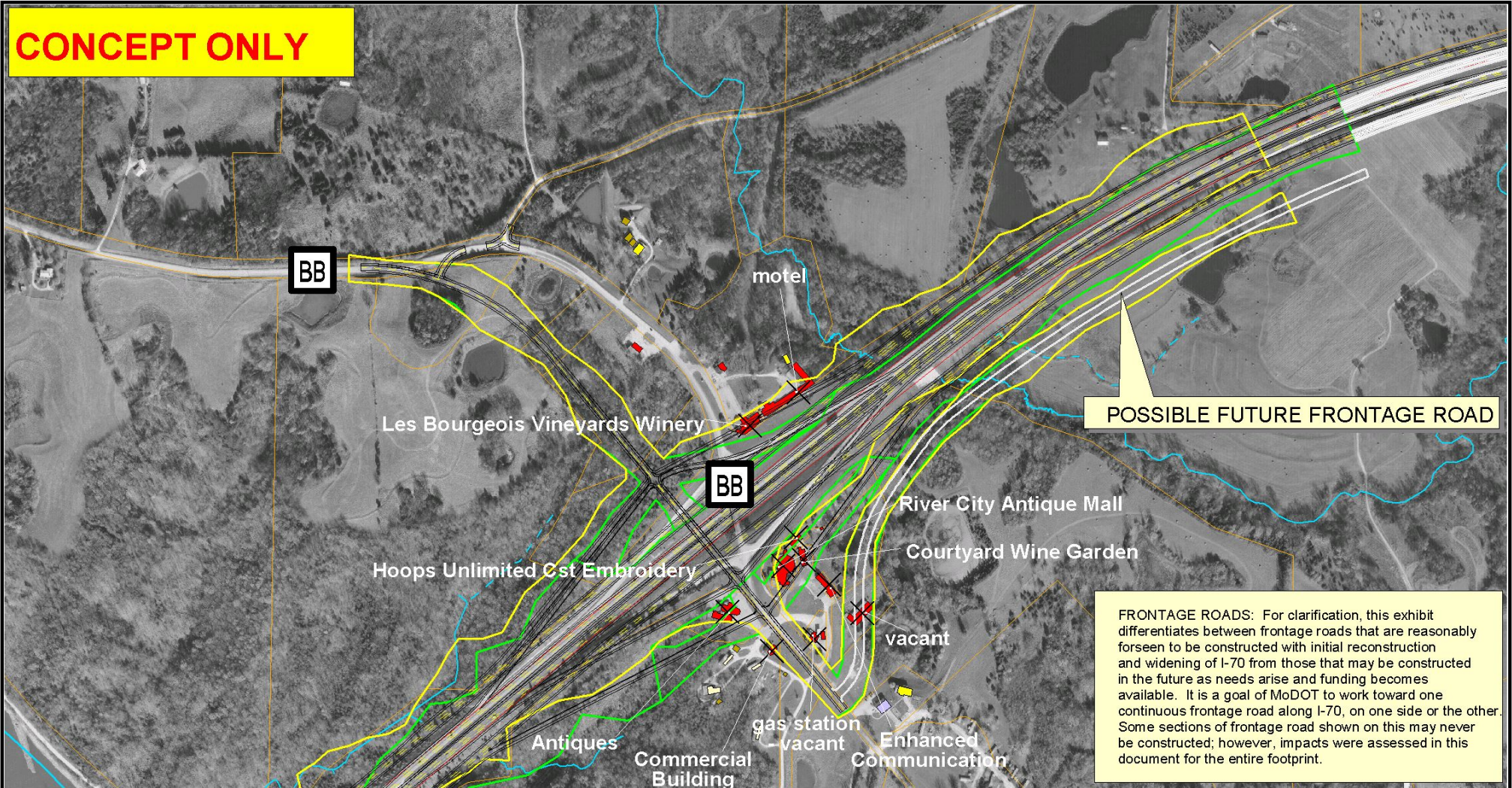
LEGEND					
North Alternate LOC	Lake/Pond	Commercial	School	Structures to be Removed	
South Alternate LOC	City Limits	Industrial	Single Family		
Edge of Pavement	Agriculture	Multifamily	Garage		
I-70 Center Line	Church	Public/Semi-Public	Mobile Home		
County Line	Utility	Billboard	Property Boundary		
River/Stream					



**Figure III-2L**  
**Displacements**  
**Cooper & Boone**  
**Counties, Missouri**



**CONCEPT ONLY**



**POSSIBLE FUTURE FRONTAGE ROAD**

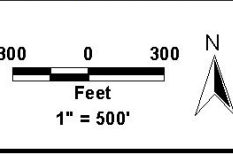
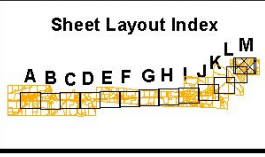
**FRONTAGE ROADS:** For clarification, this exhibit differentiates between frontage roads that are reasonably foreseen to be constructed with initial reconstruction and widening of I-70 from those that may be constructed in the future as needs arise and funding becomes available. It is a goal of MoDOT to work toward one continuous frontage road along I-70, on one side or the other. Some sections of frontage road shown on this may never be constructed; however, impacts were assessed in this document for the entire footprint.



**SECTION 3**  
*Boonville to Rocheport*

**LEGEND**

North Alternate LOC	Lake/Pond	Commercial	School
South Alternate LOC	City Limits	Industrial	Single Family
Edge of Pavement	Agriculture	Multifamily	Garage
I-70 Center Line	Church	Public/Semi-Public	Mobile Home
County Line	Utility	Billboard	Property Boundary
River/Stream			Structures to be Removed



**Figure III-2M**  
**Displacements**  
**Cooper & Boone**  
**Counties, Missouri**