



Appendix A

Revised Exhibit IV-15



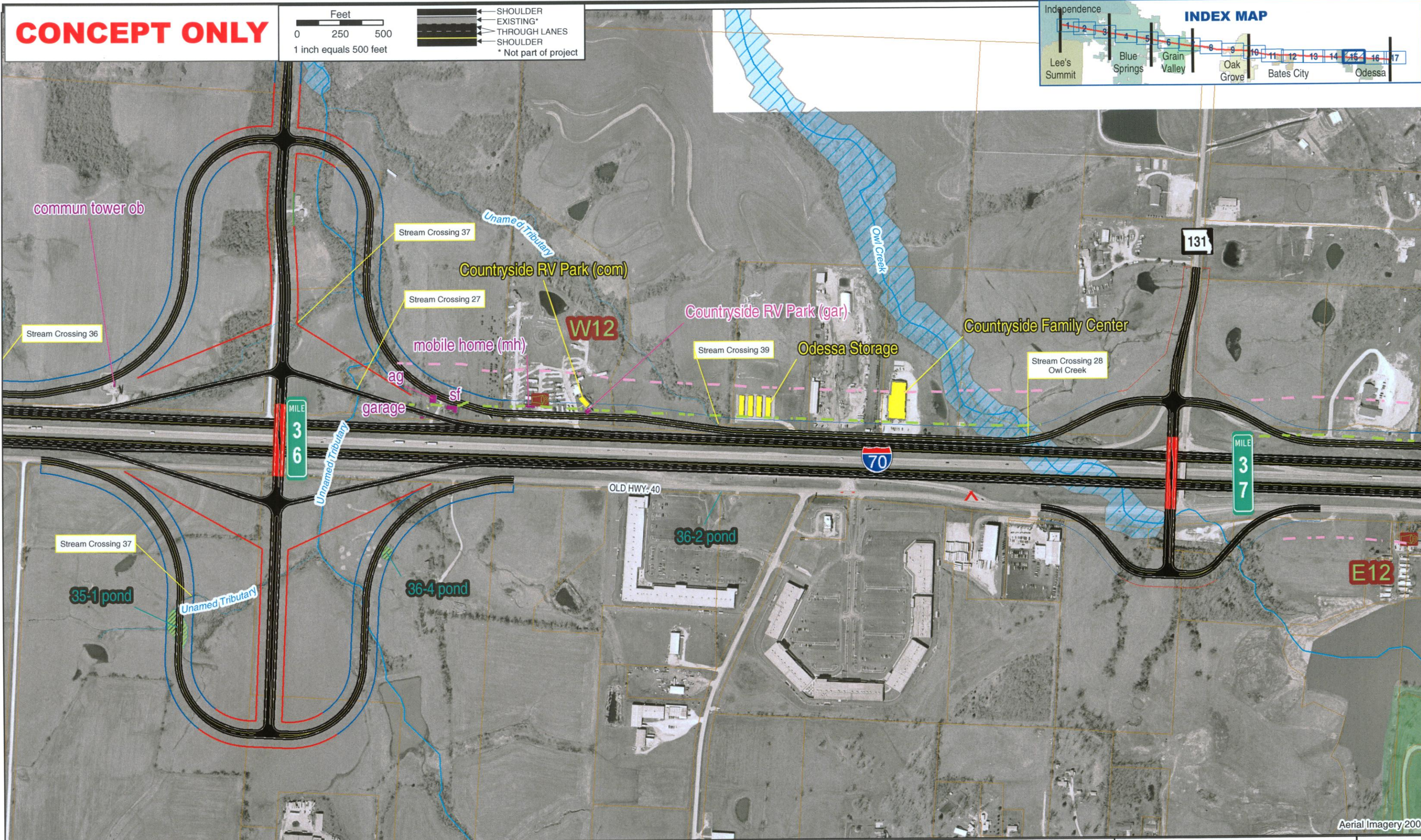
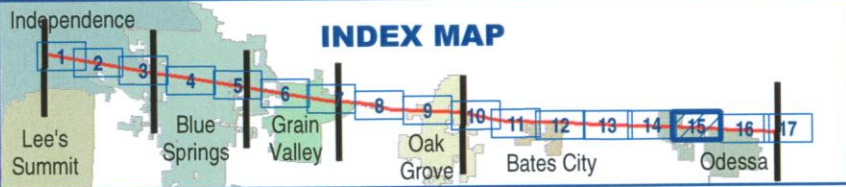
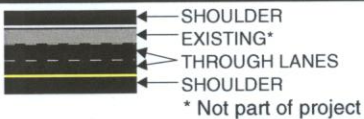
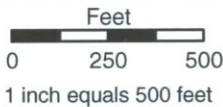
ATTENTION!

Readers and Reviewers

Exhibit IV-15 only depicts the area in western Odessa and the addition of a grade separation at Route 131. Exhibits of the entire SIU 1 corridor are contained in the Draft EA.

In the event that a copy of the Draft EA is needed, please contact us at 1-800-590-0066 to request a copy, or access the project web site at www.improvei70.org to view the document on-line.

CONCEPT ONLY



Aerial Imagery 2004



SECTION
1
Independence
to
Odessa



FEMA Flood Zones
100 Year Flood Zone
500 Year Flood Zone
Regulatory Floodway

Displacements
Partial
Complete

NOISE RECEPTOR
(E# or W#)
Wetland

NORMAL ACCESS
NO ACCESS
RIGHT-IN / RIGHT-OUT ONLY ACCESS
ACCESS REMOVED

PARK/REC
CULTURAL RESOURCE
66 dB CONTOUR
72 dB CONTOUR

IMPACTS
SELECTED ALTERNATIVE

EXHIBIT
IV - 15