



LETTER OF TRANSMITTAL

DATE: September 9, 2021

TO: All Prospective Bidders

FROM: Andy Macias, P.E.

RE: Nodaway County BRO-B074(62) – Nodaway County, Missouri
Addendum No. 1

CONTENT: The following is Addendum No. 1 for the above reference project. **Please complete the confirmation portion from this addendum and fax it back to our office at (816) 364-6086 or scan and email to akatakis@snyder-associates.com** to ensure that you have received the addendum.

**CONFIRMATION OF RECEIPT
ADDENDUM NO. 1**

This is to confirm that we did receive Addendum No. 1 for the above referenced project on this _____ day of _____, 2021.

Company: _____

By: _____

Addendum No. 1**Nodaway County BRO-B074(62)
Nodaway County, Missouri**

All Prospective Bidders:

The contract documents are hereby amended in the following particulars only. All other terms and conditions remain unchanged.

A. SPECIFICATIONS

1. Replace bid sheet 9 & 10 with bid sheet 9A & 10A with revised quantities.
2. Replace Federal Wage Rate "Modification No. 9, Publication Date 07/23/2021" with Federal Wage Rate "Modification No. 11, Publication Date 09/03/2021". (See attached)

B. PLANS

1. Replace original plan sheets 2, 3, 4, 6, 8, 10 & 13 with revised plan sheets 2, 3, 4, 6, 8, 10 & 13. (See attached) The following revisions have been made:
 - Sheet 2 Reinforcing steel and road stone quantities revised
 - Sheet 3 Key footing into rock 6" **not** 12"
 - Sheet 4 Elevations revised
 - Sheet 6 Girder spacing corrected
 - Sheet 8 Prestressed girder stirrup spacing revised
 - Sheet 10 Girder spacing corrected
 - Sheet 13 Reinforcing steel quantities corrected

The above interpretations and alterations are hereby made a part of the contract documents and supersede all other addenda or interpretations.

Issued this Ninth (9th) day of September 2021.

SNYDER & ASSOCIATES

Andy Macias, P.E.

ITEMIZED BID: The bidder should complete the following section in accordance with Sec 102.7. The bidder proposes to furnish all labor, materials, equipment, services, etc. required for the performance and completion of work, as follows.

BRIDGE ITEMS

<u>Item No.</u>	<u>Description</u>	<u>Unit</u>	<u>Est. Quantity</u>	<u>Unit Price (Each)</u>	<u>Total</u>
1	Traffic Control	LS	1	\$ _____	\$ _____
2	Mobilization	LS	1	\$ _____	\$ _____
3	Bridge Removal	LS	1	\$ _____	\$ _____
4	Class B Concrete	CuYd	95	\$ _____	\$ _____
5	Class B-2 Concrete	CuYd	149	\$ _____	\$ _____
6	Plain Neoprene Bearing Pads	EA	16	\$ _____	\$ _____
7	Prestressed Concrete I-Girder (50' Span)	EA	4	\$ _____	\$ _____
8	Prestressed Concrete I-Girder (100' Span)	EA	4	\$ _____	\$ _____
9	Reinforcing Steel	LBS	57,270	\$ _____	\$ _____
10	Type 2 Rock Blanket	TON	1,380	\$ _____	\$ _____
11	Thrie Beam Rail	LF	353	\$ _____	\$ _____
12	HP 10'x42' H-Pile	LF	270	\$ _____	\$ _____
13	Class 1 Excavation	CY	52	\$ _____	\$ _____
14	Type 3 Geotextile Fabric	SY	1,410	\$ _____	\$ _____
15	Pile Point Reinforcement	EA	12	\$ _____	\$ _____
16	Type 3 Object Markers	EA	4	\$ _____	\$ _____
17	Silt Fence	LF	1,270	\$ _____	\$ _____

BRIDGE ITEMS SUBTOTAL IN WORDS AND FIGURES: _____

_____ (\$ _____)

ROADWAY ITEMS

<u>Item No.</u>	<u>Description</u>	<u>Unit</u>	<u>Est. Quantity</u>	<u>Unit Price (Each)</u>	<u>Total</u>
1	Class A Excavation	CuYd	115	\$ _____	\$ _____
2	Embankment	CuYd	2,080	\$ _____	\$ _____
3	Road Stone	TON	240	\$ _____	\$ _____
4	Seeding, Fertilizing & Mulching	ACRE	0.80	\$ _____	\$ _____
5	15" CMP	LF	50	\$ _____	\$ _____
6	8" HDPE	LF	36	\$ _____	\$ _____

ROADWAY ITEMS SUBTOTAL IN WORDS AND FIGURES: _____
 _____ (\$ _____)

TOTAL BID IN WORDS AND FIGURES: _____
 _____ (\$ _____)

COMPANY: _____

SIGNED BY: _____

TITLE: _____

"General Decision Number: M020210001 09/03/2021

Superseded General Decision Number: M020200001

State: Missouri

Construction Types: Heavy and Highway

Counties: Missouri Statewide.

HEAVY AND HIGHWAY CONSTRUCTION PROJECTS

Note: Under Executive Order (EO) 13658, an hourly minimum wage of \$10.95 for calendar year 2021 applies to all contracts subject to the Davis-Bacon Act for which the contract is awarded (and any solicitation was issued) on or after January 1, 2015. If this contract is covered by the EO, the contractor must pay all workers in any classification listed on this wage determination at least \$10.95 per hour (or the applicable wage rate listed on this wage determination, if it is higher) for all hours spent performing on the contract in calendar year 2021. If this contract is covered by the EO and a classification considered necessary for performance of work on the contract does not appear on this wage determination, the contractor must pay workers in that classification at least the wage rate determined through the conformance process set forth in 29 CFR 5.5(a)(1)(ii) (or the EO minimum wage rate, if it is higher than the conformed wage rate). The EO minimum wage rate will be adjusted annually. Please note that this EO applies to the above-mentioned types of contracts entered into by the federal government that are subject to the Davis-Bacon Act itself, but it does not apply to contracts subject only to the Davis-Bacon Related Acts, including those set forth at 29 CFR 5.1(a)(2)-(60). Additional information on contractor requirements and worker protections under the EO is available at www.dol.gov/whd/govcontracts.

Modification Number	Publication Date
0	01/01/2021
1	02/05/2021
2	02/12/2021
3	04/09/2021
4	04/23/2021
5	05/21/2021
6	05/28/2021
7	06/25/2021
8	07/09/2021
9	07/23/2021
10	08/20/2021
11	09/03/2021

CARP0002-002 05/01/2021

ST. LOUIS COUNTY AND CITY

	Rates	Fringes
Carpenters.....	\$ 39.72	18.90

CARP0005-006 05/03/2015

CASS (Richards-Gebauer AFB ONLY), CLAY, JACKSON, PLATTE AND RAY COUNTIES

	Rates	Fringes
Carpenters:		
CARPENTERS & LATHERS.....	\$ 36.34	15.55
MILLWRIGHTS & PILEDRIVERS...	\$ 36.34	15.55

CARP0011-001 05/01/2021

	Rates	Fringes
Carpenter and Piledriver		
ADAIR, AUDRAIN (West of Hwy 19), BOONE, CALLAWAY, CHARITON, COLE, COOPER, HOWARD, KNOX, LINN, MACON, MILLER, MONITEAU, MONROE, OSAGE, PUTNAM, RANDOLPH, SCHUYLER, SHELBY AND SULLIVAN COUNTIES.....	\$ 33.69	18.90
ATCHISON, ANDREW, BATES, CALDWELL, CARROLL, DAVIESS, DEKALB, GENTRY, GRUNDY, HARRISON, HENRY, HOLT, LIVINGSTON, MERCER, NODAWAY, ST. CLAIR, SALINE AND WORTH COUNTIES.....	\$ 32.10	18.90
AUDRAIN (East of Hwy.19), RALLS, MARION, LEWIS, CLARK AND SCOTLAND COUNTIES.	\$ 33.70	18.90
BARRY, BARTON, CAMDEN, CEDAR, CHRISTIAN, DADE, DALLAS, DOUGLAS, GREENE, HICKORY, JASPER, LACLEDE, LAWRENCE, MCDONALD, NEWTON, OZARK, POLK, STONE, TANEY, VERNON, WEBSTER AND WRIGHT COUNTIES.	\$ 31.68	18.90
BENTON, MORGAN AND PETTIS...	\$ 32.15	18.90
BOLLINGER, BUTLER, CAPE GIRARDEAU, DUNKLIN, MISSISSIPPI, NEW MADRID, PEMISCOT, PERRY, STE. GENEVIEVE, SCOTT, STODDARD AND WAYNE COUNTIES.....	\$ 33.54	18.90
BUCHANAN, CLINTON, JOHNSON AND LAFAYETTE COUNTIES.....	\$ 32.85	18.90
CARTER, HOWELL, OREGON AND RIPLEY COUNTIES.....	\$ 32.43	18.90
CRAWFORD, DENT, GASCONADE, IRON, MADISON, MARIES, MONTGOMERY, PHELPS, PULASKI, REYNOLDS, SHANNON AND TEXAS COUNTIES.....	\$ 33.53	18.90
FRANKLIN COUNTY.....	\$ 37.14	18.90
JEFFERSON AND ST. CHARLES COUNTIES.....	\$ 39.72	18.90
LINCOLN COUNTY.....	\$ 35.50	18.90
PIKE, ST. FRANCOIS AND WASHINGTON COUNTIES.....	\$ 34.36	18.90
WARREN COUNTY.....	\$ 35.96	18.90

ELEC0001-002 05/31/2020

BOLLINGER, BUTLER, CAPE GIRARDEAU, CARTER, DUNKLIN, FRANKLIN, IRON, JEFFERSON, LINCOLN, MADISON, MISSISSIPPI, NEW MADRID, PEMISCOT, PERRY, REYNOLDS, RIPLEY, ST. CHARLES, ST. FRANCOIS, ST. LOUIS (City and County), STE. GENEVIEVE, SCOTT, STODDARD, WARREN, WASHINGTON AND WAYNE COUNTIES

	Rates	Fringes
Electricians.....	\$ 40.61	27.06

 ELEC0002-001 01/01/2021

ADAIR, AUDRAIN, BOONE, CALLAWAY, CAMDEN, CARTER, CHARITON, CLARK, COLE, COOPER, CRAWFORD, DENT, FRANKLIN, GASCONADE, HOWARD, HOWELL, IRON, JEFFERSON, KNOX, LEWIS, LINCON, LINN, MACON, MARIES, MARION, MILLER, MONITEAU, MONROE, MONTGOMERY, MORGAN, OREGON, OSAGE, PERRY, PHELPS, PIKE, PULASKI, PUTNAM, RALLS, RANDOLPH, REYNOLDS, RIPLEY, ST. CHARLES, ST. FRANCOIS, ST. LOUIS (City and County), STE. GENEVIEVE, SCHUYLER, SCOTLAND, SHANNON, SHELBY, SULLIVAN, TEXAS, WARREN AND WASHINGTON COUNTIES

	Rates	Fringes
Line Construction:		
Equipment Operator.....	\$ 41.23	21.81
Groundman & Truck Driver....	\$ 31.50	18.26
Lineman & Cable Splicer.....	\$ 48.03	24.31

 ELEC0053-004 01/01/2021

	Rates	Fringes
Line Construction: (ANDREW, ATCHINSON, BARRY, BARTON, BUCHANAN, CALDWELL, CEDAR, CHRISTIAN, CLINTON, DADE, DALLAS, DAVIES,, DEKALB, DOUGLAS, GENTRY, GREENE, GRUNDY, HARRISON, HICKORY, HOLT, JASPER, LACLEDE, LAWRENCE, LIVINGSTON, MCDONALD, MERCER, NEWTON, NODAWAY, OZARK, POLK, ST. CLAIR, STONE, TANEY, VERNON, WEBSTER, WORTH AND WRIGHT COUNTIES)		
Groundman Powderman.....	\$ 32.92	17.98
Groundman.....	\$ 30.72	17.20
Lineman Operator.....	\$ 44.49	21.86
Lineman.....	\$ 48.84	23.35

Line Construction; (BATES, BENTON, CARROLL, CASS, CLAY, HENRY, JACKSON, JOHNSON, LAFAYETTE, PETTIS, PLATTE, RAY AND SALINE COUNTIES)		
Groundman Powderman.....	\$ 32.27	15.52
Groundman.....	\$ 30.12	14.88
Lineman Operator.....	\$ 43.40	18.80
Lineman.....	\$ 47.30	19.95

 ELEC0095-001 06/01/2020

BARRY, BARTON, CEDAR, DADE, JASPER, LAWRENCE, MCDONALD, NEWTON,
ST CLAIR, AND VERNON COUNTIES

	Rates	Fringes
Electricians:		
Cable Splicers.....	\$ 25.40	12.19
Electricians.....	\$ 27.43	17.44

ELEC0124-007 08/26/2019

BATES, BENTON, CARROLL, CASS, CLAY, COOPER, HENRY, JACKSON,
JOHNSON, LAFAYETTE, MORGAN, PETTIS, PLATTE, RAY AND SALINE
COUNTIES:

	Rates	Fringes
Electricians.....	\$ 40.79	22.92

ELEC0257-003 03/01/2020

AUDRAIN (Except Cuivre Township), BOONE, CALLAWAY, CAMDEN,
CHARITON, COLE, CRAWFORD, DENT, GASCONADE, HOWARD, MARIES,
MILLER, MONITEAU, OSAGE, PHELPS AND RANDOLPH COUNTIES

	Rates	Fringes
Electricians:		
Cable Splicers.....	\$ 30.42	16.085
Electricians.....	\$ 34.00	18.68

ELEC0350-002 12/01/2019

ADAIR, AUDRAIN (East of Highway 19), CLARK, KNOX, LEWIS, LINN,
MACON, MARION, MONROE, MONTGOMERY, PIKE, PUTNAM, RALLS,
SCHUYLER, SCOTLAND, SHELBY AND SULLIVAN COUNTIES

	Rates	Fringes
Electricians.....	\$ 32.50	17.65

ELEC0453-001 09/01/2020

	Rates	Fringes
Electricians:		
CHRISITAN, DALLAS, DOUGLAS, GREENE, HICKORY, HOWELL, LACLEDE, OREGON, OZARK, POLK, SHANNON, WEBSTER and WRIGHT COUNTIES..	\$ 28.10	15.81
PULASKI and TEXAS COUNTIES..	\$ 32.76	16.27
STONE and TANEY COUNTIES....	\$ 23.89	14.99

ELEC0545-003 06/01/2020

ANDREW, BUCHANAN, CLINTON, DEKALB, ATCHISON, HOLT, MERCER,
GENTRY, HARRISON, DAVIESS, GRUNDY, WORTH, LIVINGSTON, NODAWAY,
AND CALDWELL COUNTIES

	Rates	Fringes
Electricians:.....	\$ 33.00	18.10

ELEC0702-004 12/30/2019

BOLLINGER, BUTLER, CAPE GIRARDEAU, DUNKLIN, MADISON,
MISSISSIPPI, NEW MADRID, PEMISCOT, SCOTT, STODDARD AND WAYNE
COUNTIES

	Rates	Fringes
Line Construction:		
Groundman - Class A.....	\$ 30.31	29% + 7.75
Groundman-Equipment Operator Class II (all other equipment).....	\$ 38.46	29% + 7.75
Heavy-Equipment Operator Class I (all crawler type equipment D-4 and larger)...	\$ 43.88	29% + 7.75
Lineman.....	\$ 53.51	29% + 7.75

ENGI0101-001 05/01/2020

ANDREW, ATCHISON, BATES, BENTON, BUCHANAN, CALDWELL, CARROLL,
CHARITON, CLINTON, COOPER, DAVIESS, DEKALB, GENTRY, GRUNDY,
HARRISON, HENRY, HOLT, HOWARD, JOHNSON, LAFAYETTE, LINN,
LIVINGSTON, MERCER, NODAWAY, PETTIS, SALINE, SULLIVAN AND WORTH
COUNITIES

	Rates	Fringes
Power equipment operators:		
GROUP 1.....	\$ 34.73	18.20
GROUP 2.....	\$ 34.33	18.20
GROUP 3.....	\$ 32.33	18.20

POWER EQUIPMENT OPERATORS CLASSIFICATIONS

GROUP 1: Asphalt roller operator, finish; asphalt paver and spreader; asphalt plant operator; auto grader or trimmer or sub-grader; backhoe; blade operator (all types); boilers - 2; booster pump on dredge; bulldozer operator; boring machine (truck or crane mounted); clamshell operator; concrete mixer paver; concrete plant operator; concrete pump operator; crane operator; derrick or derrick trucks; ditching machine; dragline operator; dredge engineman; dredge operator; drill cat with compressor mounted (self-contained) or similar type self-propelled rotary drill (not air tract); drilling or boring machine (rotary-self-propelled); finishing machine operator; greaser; high loader-fork lift-skid loader (all types); hoisting engineer (2 active drums); locomotive operator (standard gauge); mechanics and welders (field and plants); mucking machine operator; pile drive operator; pitman crane or boom truck (all types); push cat; quad track; scraper operators (all types); shovel operator; sideboom cats; side discharge spreader; skimmer scoop operators; slip form paver operator (CMI, Rex, Gomeco or equal); la tourneau rooter (all tiller types); tow boat operator; truck crane; wood and log chippers (all types).

GROUP 2: A-frame truck operator; articulated dump truck;

back filler operator; boilers (1); chip spreader; churn drill operator; compressor; concrete mixer operator, skip loader; concrete saws (self-propelled); conveyor operator; crusher operator; distributor operator; elevating grader operator; farm tractor (all attachments); fireman rig; float operator; form grade operator; hoisting engine (one drum); maintenance operator; multiple compactor; pavement breaker, self-propelled hydra-hammer (or similar type); paymill operator; power shield; pumps; roller operator (with or without blades); screening and washing plant; self-propelled street broom or sweeper; siphons and jets; straw blower; stump cutting machine; siphons and jets; tank car heater operator (combination boiler and booster); welding machine; vibrating machine operator (not hand held); welding machine.

GROUP 3: (a) Oiler;
 (b) Oiler driver
 (c) Mechanic.

HOURLY PREMIUMS:

THE FOLLOWING CLASSIFICATIONS SHALL RECEIVE (\$.25) ABOVE GROUP 1 RATE: Dragline operator - 3 yds. & over; shovel 3 yds. & over; clamshell 3 yds. & over; Crane, rigs or piledrivers, 100' of boom or over (incl. jib.), hoist - each additional active drum over 2 drums

THE FOLLOWING CLASSIFICATIONS SHALL RECEIVE (\$.50) ABOVE GROUP 1 RATE: Tandem scoop operator; crane, rigs or piledrivers 150' to 200' of boom (incl. jib.)

THE FOLLOWING CLASSIFICATIONS SHALL RECEIVE (\$.75) ABOVE GROUP 1 RATE: Crane rigs, or piledrivers 200 ft. of boom or over (including jib.)

 ENGI0101-005 04/01/2020

CASS, CLAY, JACKSON, PLATTE AND RAY COUNTIES

	Rates	Fringes
Power equipment operators:		
GROUP 1.....	\$ 37.02	19.89
GROUP 2.....	\$ 35.98	19.89
GROUP 3.....	\$ 31.51	19.89
GROUP 4.....	\$ 34.86	19.89

POWER EQUIPMENT OPERATORS CLASSIFICATIONS

GROUP 1: Asphalt roller operator, finish; asphalt paver and spreader; asphalt plant operator; auto grader or trimmer or sub-grader; backhoe; blade operator (all types); boilers-2; booster pump on dredge; boring machine (truck or crane mounted); bulldozer operator; clamshell operator; concrete cleaning decontamination machine operator; concrete mixer paver; concrete plant operator; concrete pump operator; crane operator; derrick or derrick trucks; ditching machine; dragline operator; dredge engineman; dredge operator; drillcat with compressor mounted (self-contained) or similar type self propelled rotary drill (not air tract); drilling or boring machine (rotary - self-propelled); finishing machine operator; greaser; heavy equipment robotics operator/mechanic; horizontal directional drill operator; horizontal directional drill

locator; loader-forklift - skid loader (all types);
 hoisting engineer (2 active drums); locomotive operator
 (standard guage); master environmental maintenance
 mechanic; mechanics and welders (field and plants);
 mucking machine operator; piledrive operator; pitman crane
 or boom truck (all types); push cat; quad-track; scraper
 operators (all types); shovel operator; side discharge
 spreader; sideboom cats; skimmer scoop operator; slip-form
 paver (CMI, REX, Gomaco or equal); la tourneau rooter (all
 tiller types); tow boat operator; truck crane; ultra high
 perssure waterjet cutting tool system operator/mechanic;
 vacuum blasting machine operator/mechanic; wood and log
 chippers (all types)

GROUP 2: ""A"" Frame truck operator; back filler operator;
 boilers (1); chip spreader; churn drill operator; concrete
 mixer operator, skip loader; concrete saws
 (self-propelled); conveyor operator; crusher operator;
 distributor operator; elevating grader operator; farm
 tractor (all attachments); fireman rig; float operator;
 form grader operator; hoisting engine (1 drum); maintenance
 operator; multiple compactor; pavement breaker,
 self-propelled hydra- hammer (or similar type); power
 shield; paymill operator; pumps; siphons and jets; stump
 cutting machine; tank car heater operator (combination
 boiler and booster); compressor; roller operator (with or
 without blades); screening and washing plant;
 self-propelled street broom or sweeper; straw blower; tank
 car heater operator (combination boiler and booster);
 vibrating machine operator (not hand held)

GROUP 3: Oilers

GROUP 4: Oiler Driver (All Types)

FOOTNOTE:

HOURLY PREMIUMS FOLLOWING CLASSIFICATIONS SHALL RECEIVE
 (\$1.00) ABOVE GROUP 1 RATE:

Clamshells - 3 yd. capacity or over; Cranes or rigs, 80 ft.
 of boom or over (including jib); Draglines, 3 yd. capacity
 or over;

Piledrivers 80 ft. of boom or over (including jib);

Shovels & backhoes, 3 yd. capacity or over.

 ENGI0101-022 05/01/2019

BARRY, BARTON, CAMDEN, CEDAR, CHRISTIAN, DADE, DALLAS, DOUGLAS,
 GREENE, HICKORY, JASPER, LACLEDE, LAWRENCE, MCDONALD, NEWTON,
 OZARK, POLK, ST. CLAIR, STONE, TANEY, VERNON, WEBSTER AND
 WRIGHT COUNTIES and CITY OF SPRINGFIELD

	Rates	Fringes
Power equipment operators:		
GROUP 1.....	\$ 31.72	14.88
GROUP 2.....	\$ 31.37	14.88
GROUP 3.....	\$ 31.17	14.88
GROUP 4.....	\$ 29.12	14.88

POWER EQUIPMENT OPERATORS CLASSIFICATIONS

GROUP 1: Asphalt finishing machine & trench widening
 spreader; asphalt plant console operator; autograder;

automatic slipform paver; backhoe; blade operator - all types; boat operator - tow; boilers-2; central mix concrete plant operator; clamshell operator; concrete mixer paver; crane operator; derrick or derrick trucks; ditching machine; dozer operator; dragline operator; dredge booster pump; dredge engineman; dredge operator; drill cat with compressor mounted on cat; drilling or boring machine rotary self-propelled; highloader; hoisting engine - 2 active drums; launch hammer wheel; locomotive operator; - standard guage; mechanic and welders; mucking machine; off-road trucks; piledriver operator; pitman crane operator; push cat operator; quad trac; scoop operator - all types; shovel operator; sideboom cats; skimmer scoop operators; trenching machine operator; truck crane.

GROUP 2: A-frame; asphalt hot-mix silo; asphalt plant fireman (drum or boiler); asphalt plant man; asphalt plant man; asphalt plant mixer operator; asphalt roller operator; backfiller operator; barber-greene loader; boat operator (bridges and dams); chip spreader; concrete mixer operator - skip loader; concrete plant operator; concrete pump operator; crusher operator; dredge oiler; elevating grader operator; fork lift; greaser-fleet; hoisting engine - 1; locomotive operator - narrow gauge; multiple compactor; pavement breaker; powerbroom - self-propelled; power shield; rooter; side discharge concrete spreader; slip form finishing machine; stumpcutter machine; throttle man; tractor operator (over 50 h.p.); winch truck.

GROUP 3: Boilers - 1; chip spreader (front man); churn drill operator; clef plane operator; concrete saw operator (self-propelled); curb finishing machine; distributor operator; finishing machine operator; flex plane operator; float operator; form grader operator; pugmill operator; roller operator, other than high type asphalt; screening & washing plant operator; siphons & jets; sub-grading machine operator; spreader box operator, self-propelled (not asphalt); tank car heater operator (combination boiler & booster); tractor operator (50 h.p. or less); Ulmac, Ulric or similar spreader; vibrating machine operator, not hand;

GROUP 4: Grade checker; Oiler; Oiler-Driver

HOURLY PREMIUMS:

The following classifications shall receive \$.25 above GROUP 1 rate:

Clamshells - 3 yds. or over; Cranes - Rigs or Piledrivers, 100 ft. of boom or over (including jib); Draglines - 3 yds. or over; Hoists - each additional active drum over 2 drums; Shovels - 3 yds. or over;

The following classifications shall receive \$.50 above GROUP 1 rate:

Tandem scoop operator; Cranes - Rigs or Piledrivers, 150 ft. to 200 ft. of boom (including jib); Tandem scoop.

The following classifications shall receive \$.75 above GROUP 1 rate:

Cranes - Rigs or Piledrivers, 200 ft. of boom or over (including jib.).

FRANKLIN, JEFFERSON, LINCOLN, ST CHARLES, AND WARREN COUNTIES

	Rates	Fringes
Power equipment operators:		
GROUP 1.....	\$ 34.36	27.36
GROUP 2.....	\$ 34.36	27.36
GROUP 3.....	\$ 33.06	27.36
GROUP 4.....	\$ 32.61	27.36

POWER EQUIPMENT OPERATORS CLASSIFICATIONS

GROUP 1: Backhoe, Cable; Backhoe, Hydraulic (2 cu yds bucket and under regardless of attachment, one oiler for 2 or 3, two oilers for 4 through 6); Backhoe, Hydraulic over 2 cu yds; Cableway; Crane, Crawler or Truck; Crane, Hydraulic - Truck or Cruiser mounted, 16 tons and over; Crane, Locomotive; crane with boom including jib over 100 ft from pin to pin; Crane using rock socket tool; Derrick, Steam; Derrick Car and Derrick Boat; Dragline, 7 cu yds and over; Dredge; Gradall, Crawler or tire mounted; Locomotive, Gas, Steam & other powers; Pile Driver, Land or Floating; Scoop, Skimmer; Shovel, Power (Electric, Gas, Steam or other powers); Shovel, Power (7 cu yds and over); Switch Boat; Whirley; Air Tugger with air compressor; Anchor Placing Barge; Asphalt Spreader; Athey Force Feeder Loader, self-propelled; Backfilling Machine; Boat Operator - Push Boat or Tow Boat (job site); Boiler, High Pressure Breaking in Period; Boom Truck, Placing or Erecting; Boring Machine, Footing Foundation; Bullfloat; Cherry Picker; Combination Concrete Hoist and Mixer (such as Mixermobile); Compressor, Two 125 CFM and under; Compressor, Two through Four over 125 CFM; Compressor when operator runs throttle; Concrete Breaker (Truck or Tractor mounted); Concrete Pump (such as Pumpcrete machine); Concrete Saw (self-propelled); Concrete Spreader; Conveyor, Large (not selfpropelled) hoisting or moving brick and concrete into, or into and on floor level, one or both; Crane, Cimbing (such as Linden); Crane, Hydraulic - Rough Terrain, self-propelled; Crane, Hydraulic - Truck or Cruiser mounted - under 16 tons; Drilling machine - Self-powered, used for earth or rock drilling or boring (wagon drills and any hand drills obtaining power from other souces including concrete breakers, jackhammers and Barco equipmnet no engineer required); Elevating Grader; Engine Man, Dredge; Excavator or Powerbelt Machine; Finishing Machine, self- propelled oscillating screed; Forklift; Generators, Two through Six 30 KW or over; Grader, Road with power blade; Greaser; Highlift; Hoist, Concrete and Brick (Brick cages or concrete skips operating or on tower, Towermobile, or similar equipment); Hoist, Three or more drums in use; Hoist, Stack; Hydro-Hammer; Lad-A-Vator, hoisting brick or concrete; Loading Machine such as Barber-Greene; Mechanic on job site

GROUP 2: Air Tugger with plant air; Boiler (for power or heating shell of building or temporary enclosures in connection with construction work); Boiler, Temporary; Compressor, One over 125 CFM; Compressor, truck mounted; Conveyor, Large (not self- propelled); Conveyor, Large (not self- propelled) moving brick and concrete (distributing) on floor level; Curb Finishing Machine; Ditch Paving Machine; Elevator (outside); Endless Chain Hoist; Fireman (as required); Form Grader; Hoist, One Drum regardless of size (except brick or concrete); Lad-A-Vator, other hoisting; Manlift; Mixer, Asphalt, over 8 cu ft capacity;

Mixer, one bag capacity or less; Mixer, without side loader, two bag capacity or more; Mixer, with side loader, regardless of size, not Paver; Mud Jack (where mud jack is used in conjunction with an air compressor, operator shall be paid \$.55 per hour in addition to his basic hourly rate for covering both operations); Pug Mill operator; Pump, Sump - self powered, automatic controlled over 2"; Scissor Lift (used for hoisting); Skid Steer Loader; Sweeper, Street; Tractor, small wheel type 50 HP and under with grader blade and similar equipment; Welding Machine, One over 400 amp; Winch, operating from truck

GROUP 3: Boat operator - outboard motor, job site; Conveyors (such as Con-Vay-It) regardless of how used; Elevator (inside); Heater operator, 2 through 6; Sweeper, Floor

GROUP 4: Crane type

HOURLY PREMIUMS:

Backhoe, Hydraulic 2 cu yds or less without oiler - \$2.00;
 Crane, climbing (such as Linden) - \$.50;
 Crane, Pile Driving and Extracting - \$.50
 Crane with boom (including job) over
 100 ft from pin to pin - add \$.01 per foot
 to maximum of \$4.00);
 Crane, using rock socket tool - \$.50;
 Derrick, diesel, gas or electric hoisting material
 and erecting steel (150 ft or more above ground) - \$.50;
 Dragline, 7 cu yds and over - \$.50;
 Hoist, Three or more drums in use - \$.50;
 Scoop, Tandem - \$.50;
 Shovel, Power - 7 cu yds and over - \$.50;
 Tractor, Tandem Crawler - \$.50;
 Tunnel, man assigned to work in tunnel or
 tunnel shaft - \$.50;
 Wrecking, when machines are working on
 second floor or higher - \$.50

 ENGI0513-006 05/01/2021

ADAIR, AUDRAIN, BOLLINGER, BOONE, BUTLER, CALLAWAY, CAPE
 GIRARDEAU, CARTER, CLARK, COLE, CRAWFORD, DENT, DUNKLIN,
 GASCONADE, HOWELL, IRON, KNOX, LEWIS, MACON, MADISON, MARIES,
 MARION, MILLER, MISSISSIPPI, MONITEAU, MONROE, MONTGOMERY,
 MORGAN, NEW MADRID, OREGON, OSAGE, PEMISCOT, PERRY, PHELPS,
 PIKE, PULASKI, PUTNAM, RALLS, RANDOLPH, REYNOLDS, RIPLEY, ST.
 FRANCOIS, STE. GENEVIEVE, SCHUYLER, SCOTLAND, SCOTT, SHANNON,
 SHELBY, STODDARD, TEXAS, WASHINGTON, AND WAYNE COUNTIES

	Rates	Fringes
Power equipment operators:		
GROUP 1.....	\$ 32.14	28.22
GROUP 2.....	\$ 31.79	28.22
GROUP 3.....	\$ 31.59	28.22
GROUP 4.....	\$ 27.94	28.22

POWER EQUIPMENT OPERATORS CLASSIFICATIONS

GROUP 1: Asphalt finishing machine & trench widening
 spreader, asphalt plant console operator; autograder;
 automatic slipform paver; back hoe; blade operator - all

types; boat operator tow; boiler two; central mix concrete plant operator; clam shell operator; concrete mixer paver; crane operator; derrick or derrick trucks; ditching machine; dozer operator; dragline operator; dredge booster pump; dredge engineman; dredge operator; drill cat with compressor mounted on cat; drilling or boring machine rotary self-propelled; highloader; hoisting engine 2 active drums; launchhammer wheel; locomotive operator standrad guage; mechanics and welders; mucking machine; piledriver operator; pitman crane operator; push cat operator; guad-trac; scoop operator; sideboom cats; skimmer scoop operator; trenching machine operator; truck crane, shovel operator.

GROUP 2: A-Frame; asphalt hot-mix silo; asphalt roller operator asphalt plant fireman (drum or boiler); asphalt plant man; asphalt plant mixer operator; backfiller operator; barber-greene loader; boat operator (bridge & dams); chip spreader; concrete mixer operator skip loader; concrete plant operator; concrete pump operator; dredge oiler; elevating graded operator; fork lift; grease fleet; hoisting engine one; locomotive operator narrow guage; multiple compactor; pavement breaker; powerbroom self-propelled; power shield; rooter; slip-form finishing machine; stumpcutter machine; side discharge concrete spreader; throttleman; tractor operator (over 50 hp); winch truck; asphalt roller operator; crusher operator.

GROUP 3: Spreader box operator, self-propelled not asphalt; tractor operator (50 h.p. or less); boilers one; chip spreader (front man); churn drill operator; compressor over 105 CFM 2-3 pumps 4" & over; 2-3 light plant 7.5 KWA or any combination thereof; clef plane operator; compressor maintenance operator 2 or 3; concrete saw operator (self-propelled); curb finishing mancine; distributor operator; finishing machine operator; flex plane operator; float operator; form grader operator; pugmill operator; riller operator other than high type asphalt; screening & washing plant operator; siphons & jets; subgrading machine operator; tank car heater (combination boiler & booster); ulmac, ulric or similar spreader; vibrating machine operator; hydrobroom.

GROUP 4: Oiler; grout machine; oiler driver; compressor over 105 CFM one; conveyor operator one; maintenance operator; pump 4" & over one.

FOOTNOTE: HOURLY PREMIUMS

Backhoe hydraulic, 2 cu. yds. or under Without oiler - \$2.00
Certified Crane Operator - \$1.50;
Certified Hazardous Material Operator \$1.50;
Crane, climbing (such as Linden) - \$0.50;
Crane, pile driving and extracting - \$0.50;
Crane, with boom (including jib) over 100' from pin to pin
add \$0.01 per foot to maximum of \$4.00;
Crane, using rock socket tool - \$0.50;
Derrick, diesel, gas or electric, hoisting material and
erecting steel (150' or more above the ground) - \$0.50;
Dragline, 7 cu. yds, and over - \$0.50;
Hoist, three or more drums in use - \$0.50; Scoop, Tandem -
\$0.50;
Shovel, power - 7 cu. yds. or more - \$0.50;
Tractor, tandem crawler - \$0.50;
Tunnel, man assigned to work in tunnel or tunnel shaft -

\$0.50;
 Wrecking, when machine is working on second floor or higher -
 \$0.50;

 ENGI0513-007 05/06/2019

ST. LOUIS CITY AND COUNTY

	Rates	Fringes
Power equipment operators:		
GROUP 1.....	\$ 34.36	27.36
GROUP 2.....	\$ 34.36	27.36
GROUP 3.....	\$ 33.06	27.36
GROUP 4.....	\$ 32.61	27.36

POWER EQUIPMENT OPERATORS CLASSIFICATIONS

GROUP 1: Backhoe, cable or hydraulic; cableway; crane crawler or truck; crane, hydraulic-truck or cruiser mounted 16 tons & over; crane locomotive; derrick, steam; derrick car & derrick boat; dragline; dredge; gradall, crawler or tire mounted; locomotive, gas, steam & other powers; pile driver, land or floating; scoop, skimmer; shovel, power (steam, gas, electric or other powers); switch boat; whirley.

GROUP 2: Air tugger w/air compressor; anchor-placing barge; asphalt spreader; atey force feeder loader (self-propelled); backfilling machine; backhoe-loader; boat operator-push boat or tow boat (job site); boiler, high pressure breaking in period; boom truck, placing or erecting; boring machine, footing foundation; bull- float; cherry picker; combination concrete hoist & mixer (such as mixer mobile); compressor (when operator runs throttle); concrete breaker (truck or tractor mounted); concrete pump, such as pump-crete machine; concrete saw (self-propelled), concrete spreader; conveyor, large (not self-propelled), hoisting or moving brick and concrete into, or into and on floor level, one or both; crane, hydraulic-rough terrain, self-propelled; crane hydraulic-truck or cruiser mounted-under 16 tons; drilling machines, self-powered use for earth or rock drilling or boring (wagon drills nd any hand drills obtaining power from other sources including concrete breakers, jackhammers and barco equipment-no engineer required); elevating grader; engineman, dredge; excavator or powerbelt machine; finishing machine, self-propelled oscillating screed; forklift; grader, road with power blade; highlift. greaser; hoist, stack, hydro-hammer; loading machine (such as barber-greene); machanic, on job site; mixer, pipe wrapping machines; plant asphalt; plant, concrete producing or ready-mix job site; plant heating-job site; plant mixing-job site; plant power, generating-job site; pumps, two through six self-powered over 2""; pumps, electric submersible, two through six, over 4""; quad-track; roller, asphalt, top or sub-grade; scoop, tractor drawn; spreader box; sub-grader; tie tamper; tractor-crawler, or wheel type with or without power unit, power take-offs and attachments regardless of size; trenching machine; tunnel boring machine; vibrating machine automatic, automatic propelled; welding machines (gasoline or diesel) two through six; well drilling machine

GROUP 3: Conveyor, large (not self-propelled); conveyor,

large (not self-propelled) moving brick and concrete distributing) on floor level; mixer two or more mixers of one bag capacity or less; air tugger w/plant air; boiler, for power or heating on construction projects; boiler, temporary; compressor (mounted on truck; curb finishing machine; ditch paving machine; elevator; endless chain hoist; form grader; hoist, one drum regardless of size; lad-a-vator; manlift; mixer, asphalt, over 8 cu. ft. capacity, without side loader, 2 bag capacity or more; mixer, with side loader, regardless of size; pug mill operator; pump, sump-self-powered, automatic controlled over 2" during use in connection with construction work; sweeper, street; welding machine, one over 400 amp.; winch operating from truck; scissor lift (used for hoisting); tractor, small wheel type 50 h.p. & under with grader blade & similar equipment; Oiler on dredge and on truck crane.

GROUP 4: Boat operator-outboard motor (job site); conveyor (such as con-vay-it) regardless of how used; sweeper, floor

HOURLY PREMIUMS:

Backhoe, hydraulic	
2 cu. yds. or under without oiler	\$2.00
Certified Crane Operator	1.50
Certified Hazardous Material Operator	1.50
Crane, climbing (such as Linden)	.50
Crane, pile driving and extracting	.50
Crane, with boom (including jib) over 100' (from pin to pin) add \$.01 per foot to maximum of	4.00
Crane, using rock socket tool	.50
Derrick, diesel, gas or electric, hoisting material and erecting steel (150' or more above ground)	.50
Dragline, 7 cu. yds. and over	.50
Hoist, three (3) or more drums in use	.50
Scoop, Tandem	.50
Shovel, power - 7 cu. yds. or more	.50
Tractor, tandem crawler	.50
Tunnel, man assigned to work in tunnel or tunnel shaft	.50
Wrecking, when machine is working on second floor or higher	.50

IRON0010-012 04/01/2021

Rates Fringes

Ironworkers:

ANDREW, BARTON, BENTON,
CAMDEN, CEDAR, CHARITON,
CHRISTIAN, COOPER, DADE,
DALLAS, DAVIESS, DE KALB,
GENTRY, GREENE, GRUNDY,
HARRISON, HICKORY, HOLT,
HOWARD, LACLEDE, LINN,
LIVINGSTON, MERCER,
MONITEAU, MORGAN, NODAWAY,
POLK, PUTNAM, RANDLOPH,
ST. CLAIR, SULLIVAN,
TANEY, VERNON, WEBSTER,
WRIGHT and WORTH Counties
and portions of ADAIR,
BOONE, MACON, MILLER and

RANDOLPH Counties.....	\$ 31.50	31.99
ANDREW, BARTON, BENTON, CAMDEN, CEDAR, CHARITON, CHRISTIAN, COOPER, DADE, DALLAS, DAVIESS, DE KALB, GENTRY, GREENE, GRUNDY, HARRISON, HICKORY, HOLT, HOWARD, LACLEDE, LINN, LIVINGSTON, MERCER, MONITEAU, MORGAN, NODAWAY, PETTIS, POLK, PUTNAM, RANDLOPH, ST. CLAIR, SULLIVAN, TANEY, VERNON, WEBSTER, WRIGHT and WORTH Counties and portions of ADAIR, BOONE, MACON, MILLER and RANDOLPH Counties.....		
	\$ 30.55	30.44
ATCHISON, BATES, BUCHANAN, CALDWELL, CARROLL, CASS, CLAY, CLINTON, HENRY, JACKSON, JOHNSON, LAFAYETTE, PETTIS, PLATTE, SALINE, AND RAY COUNTIES....		
	\$ 34.50	31.99

IRON0321-002 08/01/2020

DOUGLAS, HOWELL and OZARK COUNTIES

	Rates	Fringes
Ironworker.....	\$ 22.00	19.26

IRON0396-004 08/05/2020

ST. LOUIS (City and County), ST. CHARLES, JEFFERSON, IRON,
FRANKLIN, LINCOLN, WARREN, WASHINGTON, ST. FRANCOIS, STE.
GENEVIEVE, and REYNOLDS Counties; and portions of MADISON,
PERRY, BOLLINGER, WAYNE, and CARTER Counties

	Rates	Fringes
Ironworker.....	\$ 35.86	28.11

IRON0396-009 08/05/2020

AUDRAIN, CALLAWAY, COLE, CRAWFORD, DENT, GASCONADE, MARIES,
MONTGOMERY, OSAGE, PHELPS, PIKE, PULASKI, TEXAS and WRIGHT
Counties; and portions of BOONE, CAMDEN, DOUGLAS, HOWELL,
LACLEDE, MILLER, MONROE, OREGON, SHANNON and RALLS Counties

	Rates	Fringes
Ironworker.....	\$ 31.39	29.20

IRON0577-005 08/01/2020

ADAIR, CLARK, KNOX, LEWIS, MACON, MARION, MONROE, RALLS,
SCHUYLER, SCOTLAND, AND SHELBY COUNTIES

	Rates	Fringes
--	-------	---------

Ironworker.....\$ 27.65 24.20

* IRON0584-004 06/01/2021

BARRY, JASPER, LAWRENCE, MCDONALD, NEWTON AND STONE Counties

	Rates	Fringes
Ironworkers:.....	\$ 26.25	15.35

IRON0782-003 08/01/2020

CAPE GIRARDEAU, MISSISSIPPI, NEW MADRID, SCOTT, & STODDARD Counties; and portions of BOLLINGER, BUTLER, CARTER, DUNKLIN, MADISON, PEMISCOT, PERRY, RIPLEY, and WAYNE Counties

	Rates	Fringes
Ironworkers:		
Locks, Dams, Bridges and other major work on the Mississippi and Ohio River only.....	\$ 31.63	24.27
All Other Work.....	\$ 28.29	23.77

LAB00042-003 03/04/2021

ST. LOUIS (City and County)

	Rates	Fringes
LABORER		
Plumber Laborer.....	\$ 35.00	16.37

LAB00042-005 03/04/2021

ST. LOUIS (City and County)

	Rates	Fringes
LABORER		
Dynamiter, Powderman.....	\$ 35.00	16.37
Laborers, Flaggers.....	\$ 35.00	16.37
Wrecking.....	\$ 35.00	16.37

LAB00424-002 05/01/2020

	Rates	Fringes
LABORER		
ADAIR, AUDRAIN, BOONE, CALLAWAY, CHARITON, CLARK, COLE, COOPER, HOWARD, IRON, KNOX, LEWIS, LINN, MACON, MADISON, MARION, MILLER, MONITEAU, MONROE, PERRY, PIKE, PUTNAM, RALLS, RANDOLPH, REYNOLDS, ST. FRANCOIS, STE. GENEVIEVE, SCHUYLER, SCOTLAND, SHELBY AND SULLIVAN COUNTIES		
GROUP 1.....	\$ 30.75	14.57
GROUP 2.....	\$ 30.75	14.57

BOLLINGER, BUTLER, CAPE		
GIRARDEAU, CARTER,		
CRAWFORD, DENT, DUNKLIN,		
GASCONADE, HOWELL, MARIES,		
MISSISSIPPI, NEW MADRID,		
OREGON, OSAGE, PEMISCOT,		
PHELPS, PULASKI, RIPLEY,		
SCOTT, SHANNON, STODDARD,		
TEXAS, WASHINGTON AND		
WAYNE COUNTIES		
GROUP 1.....	\$ 30.75	14.57
GROUP 2.....	\$ 30.75	14.57
FRANKLIN COUNTY		
GROUP 1.....	\$ 32.86	14.57
GROUP 2.....	\$ 33.46	14.57
JEFFERSON COUNTY		
GROUP 1.....	\$ 32.91	14.57
GROUP 2.....	\$ 33.51	14.57
LINCOLN, MONTGOMERY AND		
WARREN COUNTIES		
GROUP 1.....	\$ 34.33	14.57
GROUP 2.....	\$ 34.33	14.57
ST.CHARLES COUNTY		
GROUP 1.....	\$ 34.33	14.57
GROUP 2.....	\$ 34.33	14.57

LABORERS CLASSIFICATIONS

GROUP 1 - General laborer-flagman, carpenter tenders; salamander Tenders; Dump Man; Ticket Takers; loading trucks under bins, hoppers, and conveyors; track man; cement handler; dump man on earth fill; georgie buggy man; material batch hopper man; spreader on asphalt machine; material mixer man (except on manholes); coffer dams; riprap pavers rock, block or brick; scaffolds over ten feet not self-supported from ground up; skip man on concrete paving; wire mesh setters on concrete paving; all work in connection with sewer, water, gas, gasoling, oil, drainage pipe, conduit pipe, tile and duct lines and all other pipe lines; power tool operator; all work in connection with hydraulic or general dredging operations; form setters, puddlers (paving only); straw blower nozzle man; asphalt plant platform man; chuck tender; crusher feeder; men handling creosote ties or creosote materials; men working with and handling epoxy material; topper of standing trees; feeder man on wood pulverizers, board and willow mat weavers and cabelee tiers on river work; deck hands; pile dike and revetment work; all laborers working on underground tunnels less than 25 ft. where compressed air is not used; abutement and pier hole men working six (6) ft. or more below ground; men working in coffer dams for bridge piers and footing in the river; barco tamper; jackson or any other similar tamp; cutting torch man; liners, curb, gutters, ditch lines; hot mastic kettlemen; hot tar applicator; hand blade operator; mortar men or brick or block manholes; rubbing concrete, air tool operator under 65 lbs.; caulker and lead man; chain or concrete saw under 15 h.p.; signal Gan; Guard rail and sign erectors.

GROUP 2 - Skilled laborers - Vibrator man; asphalt raker; head pipe layer on sewer work; batterboard man on pipe and ditch work; cliff scalers working from bosun's chairs; scaffolds or platforms on dams or power plants over 10 ft. high; air tool operator over 65 lbs.; stringline man on

concrete paving; sandblast man; laser beam man; wagon drill; churn drill; air track drill and all other similar type drills, gunite nozzle man; pressure grout man; screed man on asphalt; concrete saw 15 h.p. and over; grade checker; strigline man on electronic grade control; manhole builder; dynamite man; powder man; welder; tunnel man; waterblaster - 1000 psi or over; asbestos and/or hazardous waste removal and/or disposal

LAB00579-005 05/01/2021

	Rates	Fringes
LABORER (ANDREW, ATCHISON, BUCHANAN, CALDWELL, CLINTON, DAVISS, DEKALB, GENTRY, GRUNDY, HARRISON, HOLT, LIVINGSTON, MERCER, NODAWAY and WORTH COUNTIES.)		
GROUP 1.....	\$ 27.71	15.92
GROUP 2.....	\$ 28.06	15.92
LABORER (BARRY, BARTON, BATES, BENTON, CAMDEN, CARROLL, CEDAR, CHRISTIAN, DADE, DALLAS, DOUGLAS, GREENE, HENRY. HICKORY, JASPER, JOHNSON, LACLEDE, LAWRENCE, MCDONALD, MORGAN, NEWTON, OZARK, PETTIS, POLK, ST.CLAIR, SALINE, STONE, TANEY, VERNON, WEBSTER and WRIGHT COUNTIES)		
GROUP 1.....	\$ 26.76	15.07
GROUP 2.....	\$ 27.31	15.07
LABORER (LAFAYETTE COUNTY)		
GROUP 1.....	\$ 27.76	14.87
GROUP 2.....	\$ 28.11	14.87

LABORERS CLASSIFICATIONS

GROUP 1: General Laborers - Carpenter tenders; salamander tenders; loading trucks under bins; hoppers & conveyors; track men & all other general laborers; air tool operator; cement handler-bulk or sack; dump man on earth fill; georgie buggy man; material batch hopper man; material mixer man (except on manholes); coffer dams; riprap pavers - rock, block or brick; signal man; scaffolds over ten feet not self-supported from ground up; skipman on concrete paving; wire mesh setters on concrete paving; all work in connection with sewer, water, gas, gasoline, oil drainage pipe, conduit pipe, tile and duct lines and all other pipe lines; power tool operator, all work in connection with hydraulic or general dredging operations; puddlers (paving only); straw blower nozzle man; asphalt plant platform man; chuck tender; crusher feeder; men handling creosote ties or creosote materials; men working with and handling epoxy material or materials (where special protection is required); rubbing concrete; topper of standing trees; batter board man on pipe and ditch work; feeder man on wood pulverizers; board and willow mat weavers and cable tiers on river work; deck hands; pile dike and revetment work; all laborers working on underground tunnels less than 25 feet where compressed air is not used; abutment and pier hole men working six (6) feet or more below ground; men

working in coffer dams for bridge piers and footings in the river; ditchliners; pressure groutmen; caulker; chain or concrete saw; cliffscalers working from scaffolds, bosuns' chairs or platforms on dams or power plants over (10) feet above ground; mortarmen on brick or block manholes; toxic and hazardous waste work.

GROUP 2: Skilled Laborers - Head pipe layer on sewer work; laser beam man; Jackson or any other similar tamp; cutting torch man; form setters; liners and stringline men on concrete paving, curb, gutters; hot mastic kettleman; hot tar applicator; sandblasting and gunite nozzle men; air tool operator in tunnels; screed man on asphalt machine; asphalt raker; barco tamper; churn drills; air track drills and all similar drills; vibrator man; stringline man for electronic grade control; manhole builders-brick or block; dynamite and powder men; grade checker.

LAB00663-002 04/01/2021

CASS, CLAY, JACKSON, PLATTE AND RAY COUNTIES

	Rates	Fringes
LABORER		
GROUP 1.....	\$ 31.83	16.68
GROUP 2.....	\$ 33.04	16.68

LABORERS CLASSIFICATIONS

GROUP 1: General laborers, Carpenter tenders, salamander tenders, loading trucks under bins, hoppers and conveyors, track men and all other general laborers, air tool operator, cement handler (bulk or sack), chain or concrete saw, deck hands, dump man on earth fill, Georgie Buggies man, material batch hopper man, scale man, material mixer man (except on manholes), coffer dams, abutments and pier hole men working below ground, riprap pavers rock, black or brick, signal man, scaffolds over ten feet not self-supported from ground up, skipman on concrete paving, wire mesh setters on concrete paving, all work in connection with sewer, water, gas, gasoling, oil, drainage pipe, conduit pipe, tile and duct lines and all other pipelines, power tool operator, all work in connection with hydraulic or general dredging operations, straw blower nozzle man, asphalt plant platform man, chuck tender, crusher feeder, men handling creosote ties on creosote materials, men working with and handling epoxy material or materials (where special protection is required), topper of standing trees, batter board man on pipe and ditch work, feeder man on wood pulverizers, board and willow mat weavers and cable tiers on river work, deck hands, pile dike and revetment work, all laborers working on underground tunnels less than 25 feet where compressed air is not used, abutment and pier hole men working six (6) feet or more below ground, men working in coffer dams for bridge piers and footings in the river, ditchliners, pressure groutmen, caulker and chain or concrete saw, cliffscalers working from scaffolds, bosuns' chairs or platforms on dams or power plants over (10) feet above ground, mortarmen on brick or block manholes, signal man.

GROUP 2: Skilled Laborer - spreader or screed man on asphalt machine, asphalt raker, grade checker, vibrator

man, concrete saw over 5 hp., laser beam man, barco tamper, jackson or any other similar tamp, wagon driller, churn drills, air track drills and other similar drills, cutting torch man, form setters, liners and stringline men on concrete paving, curb, gutters and etc., hot mastic kettleman, hot tar applicator, hand blade operators, mortar men on brick or block manholes, sand blasting and gunnite nozzle men, rubbing concrete, air tool operator in tunnels, head pipe layer on sewer work, manhole builder (brick or block), dynamite and powder men.

 PAIN0002-002 09/01/2007

CLARK, FRANKLIN, JEFFERSON, LEWIS, LINCOLN, MARION, PIKE, RALLS, ST. CHARLES, ST. LOUIS (CITY & COUNTY), AND WARREN COUNTIES

	Rates	Fringes
Painters:		
Brush and Roller; Taper.....	\$ 28.61	10.24
High work over 60 feet.....	\$ 29.11	10.24
Lead Abatement.....	\$ 29.36	10.24
Pressure Roller; High work under 60 ft.....	\$ 28.86	10.24
Spray & Abrasive Blasting; Water Blasting (Over 5000 PSI).....	\$ 30.61	10.24
Taper (Ames Tools & Bazooka).....	\$ 30.21	10.24

 PAIN0002-006 04/01/2020

ADAIR, AUDRAIN, BOONE, CALLAWAY, CHARITON, COLE, GASCONADE, HOWARD, KNOX, LINN, MACON, MONROE, MONTGOMERY, OSAGE, PUTNAM, RANDOLPH, SCHUYLER, SCOTLAND, SHELBY AND SULLIVAN COUNTIES and the City of Booneville.

	Rates	Fringes
Painters:		
Bridges, Dams, Locks or Powerhouses.....	\$ 26.64	13.98
Brush and Roll; Taping, Paperhanging.....	\$ 24.64	13.98
Epoxy or Any Two Part Coating; Sandblasting; Stage or other Aerial Work - Platforms over 50 feet high; Lead Abatement.....	\$ 25.64	13.98
Spray; Structural Steel (over 50 feet).....	\$ 24.64	13.98
Tapers using Ames or Comparable Tools.....	\$ 25.39	13.98

 PAIN0003-004 04/01/2019

CASS, CLAY, CLINTON, JACKSON, JOHNSON, LAFAYETTE, PLATTE & RAY COUNTIES

Rates	Fringes
-------	---------

Painters:

Bridgeman; Lead Abatement;		
Sandblast; Storage Bin &		
Tanks.....	\$ 33.41	17.76
Brush & Roller.....	\$ 30.54	17.76
Drywall.....	\$ 31.74	17.76
Paper Hanger.....	\$ 31.04	17.76
Stageman; Beltman;		
Steelman; Elevator Shaft;		
Bazooka, Boxes and Power		
Sander; Sprayman; Dipping...	\$ 32.41	17.76
Steeplejack.....	\$ 36.98	17.76

PAIN0003-011 04/01/2019

BATES, BENTON, CALDWELL, CARROLL, COOPER, DAVIESS, GRUNDY,
HARRISON, HENRY, LIVINGSTON, MERCER, MONITEAU, MORGAN, PETTIS &
SALINE COUNTIES

Rates Fringes

Painters:

Bridgeman; Lead Abatement;		
Sandblast; Storage Bin &		
Tanks.....	\$ 26.73	17.76
Brush & Roller.....	\$ 24.43	17.76
Drywall.....	\$ 25.39	17.76
Paper Hanger.....	\$ 24.83	17.76
Stageman; Beltman;		
Steelman; Elevator Shaft;		
Bazooka, Boxes and Power		
Sander; Sprayman; Dipping...	\$ 26.35	17.76
Steeplejack.....	\$ 29.58	17.76

PAIN0203-001 04/01/2012

BARRY, BARTON, CEDAR, CHRISTIAN, DADE, DALLAS, DOUGLAS, GREENE,
HICKORY, HOWELL, JASPER, LAWRENCE, MCDONALD, NEWTON, OZARK,
POLK, ST. CLAIR, STONE, TANEY, VERNON, WEBSTER, and WRIGHT
COUNTIES

Rates Fringes

Painters:

Finisher.....	\$ 20.18	11.33
Painter.....	\$ 19.75	11.76
Sandblaster, High Man,		
Spray Man, Vinyl Hanger,		
Tool Operator.....	\$ 21.18	11.33

PAIN1265-003 07/01/2013

CAMDEN, CRAWFORD, DENT, LACLEDE, MARIES, MILLER, PHELPS,
PULASKI AND TEXAS COUNTIES

Rates Fringes

Painters:

Brush and Roller.....	\$ 25.64	13.27
Floor Work.....	\$ 26.14	13.27
Lead Abatement.....	\$ 27.89	13.27

Spray.....	\$ 27.14	13.27
Structural Steel, Sandblasting and All Tank Work.....	\$ 26.89	13.27
Taping, Paperhanging.....	\$ 26.64	13.27

* PAIN1292-002 09/01/2021

BOLLINGER, BUTLER, CAPE GIRARDEAU, CARTER, DUNKLIN,
MISSISSIPPI, NEW MADRID, OREGON, PEMISCOT, PERRY, REYNOLDS,
RIPLEY, SCOTT, SHANNON, STODDARD and WAYNE COUNTIES

	Rates	Fringes
Painters:		
Bridges, Stacks & Tanks.....	\$ 33.46	14.53
Brush & Roller.....	\$ 27.96	14.53
Spray & Abrasive Blasting; Waterblasting (over 5000 PSI).....	\$ 29.96	14.53

Height Rates (All Areas):
Over 60 ft. \$0.50 per hour.
Under 60 ft. \$0.25 per hour.

* PAIN1292-003 09/01/2021

IRON, MADISON, ST. FRANCOIS, STE. GENEVIEVE and WASHINGTON
COUNTIES

	Rates	Fringes
Painters:		
Bridges, Stacks & Tanks.....	\$ 33.46	14.53
Brush & Roller.....	\$ 27.96	14.53
Spray & Abrasive Blasting; Waterblasting (Over 5000 PSI).....	\$ 29.96	14.53

Height Rates (All Areas):
Over 60 ft. \$0.50 per hour
Under 60 ft. \$0.25 per hour.

PAIN2012-001 04/01/2020

ANDREW, ATCHISON, BUCHANAN, DE KALB, GENTRY, HOLT, NODAWAY &
WORTH COUNTIES

	Rates	Fringes
Painters:		
Brush & Roller.....	\$ 32.91	17.86
Sandblaster.....	\$ 34.41	17.86
Steeplejack.....	\$ 37.98	17.86

PLAS0518-006 03/01/2020

BARRY, BARTON, CEDAR, CHRISTIAN, DADE, DALLAS, DOUGLAS, GREENE,
HICKORY, JASPER, LACLEDE, LAWRENCE, MCDONALD, NEWTON, OZARK,
POLK, ST. CLAIR, STONE, TANEY, VERNON, WEBSTER, AND WRIGHT

COUNTIES

	Rates	Fringes
CEMENT MASON/CONCRETE FINISHER...	\$ 24.44	12.11

PLAS0518-007 04/01/2021		

CASS (Richards-Gebaur AFB only), CLAY, JACKSON, PLATTE AND RAY COUNTIES

	Rates	Fringes
Cement Masons:.....	\$ 33.67	18.30

PLAS0518-011 04/01/2019		

ANDREW, ATCHISON, BATES, BUCHANNAN, CLINTON, DEKALB, GENTRY, HENRY, HOLT, JOHNSON, LAFAYETTE, NODAWAY & WORTH COUNTIES

	Rates	Fringes
CEMENT MASON/CONCRETE FINISHER...	\$ 32.00	20.13

PLAS0527-001 04/01/2018		

	Rates	Fringes
CEMENT MASON		
FRANKLIN, LINCOLN AND WARREN COUNTIES.....	\$ 30.74	18.07
JEFFERSON, ST. CHARLES COUNTIES AND ST. LOUIS (City and County).....	\$ 32.66	18.62

PLAS0527-004 06/01/2017		

CRAWFORD, DENT, IRON, MADISON, MARION, PHELPS, PIKE, PULASKI, RALLS, REYNOLDS, ST. FRANCOIS, STE. GENEVIEVE, SHANNON, TEXAS, WASHINGTON COUNTIES

	Rates	Fringes
CEMENT MASON.....	\$ 28.10	18.07

PLAS0908-001 05/01/2017		

BOLLINGER, BUTLER, CAPE GIRARDEAU, CARTER, DUNKLIN, HOWELL, MISSISSIPPI, NEW MADRID, OREGON, PEMISCOT, PERRY, RIPLEY, SCOTT, STODDARD, AND WAYNE COUNTIES

	Rates	Fringes
CEMENT MASON.....	\$ 27.60	15.73

PLAS0908-005 05/01/2017		

BENTON, CALDWELL, CALLAWAY, CAMDEN, CARROLL, COLE, DAVIESS, GASCONADE, GRUNDY, HARRISON, LIVINGSTON, MACON, MARIES, MERCER, MILLER, MONTGOMERY, MORGAN, OSAGE, PETTIS & SALINE COUNTIES

	Rates	Fringes
CEMENT MASON.....	\$ 27.60	15.73

PLUM0008-003 06/01/2021

CASS, CLAY, JACKSON, JOHNSON, AND PLATTE COUNTIES

	Rates	Fringes
Plumbers.....	\$ 49.43	23.29

PLUM0008-017 06/01/2021

BATES, BENTON, CARROLL, HENRY, LAFAYETTE, MORGAN, PETTIS, RAY,
ST. CLAIR, SALINE AND VERNON COUNTIES

	Rates	Fringes
Plumbers.....	\$ 49.43	23.29

PLUM0045-003 08/01/2021

ANDREW, ATCHISON, BUCHANAN, CALDWELL, CLINTON, DAVIESS, DEKALB,
GENTRY, HARRISON, HOLT, NODAWAY AND WORTH COUNTIES

	Rates	Fringes
Plumbers and Pipefitters.....	\$ 39.80	25.05

PLUM0178-003 11/01/2020

BARRY, CEDAR, CHRISTIAN, DADE, DALLAS, DOUGLAS, GREENE,
HICKORY, LACLEDE, LAWRENCE, POLK, STONE, TANEY, WEBSTER AND
WRIGHT COUNTIES

	Rates	Fringes
Plumbers and Pipefitters.....	\$ 32.60	15.12

PLUM0178-006 11/01/2020

BARTON, JASPER, MCDONALD AND NEWTON COUNTIES

	Rates	Fringes
Plumbers and Pipefitters		
Projects \$750,000 & under...	\$ 29.63	15.22
Projects over \$750,000.....	\$ 32.60	15.12

PLUM0533-004 06/01/2021

BATES, BENTON, CARROLL, CASS, CLAY, HENRY, HICKORY, JACKSON,
JOHNSON, LAFAYETTE, MORGAN, PETTIS, PLATTE, RAY, SALINE, ST.
CLAIR AND VERNON COUNTIES

	Rates	Fringes
Pipefitters.....	\$ 49.98	22.95

PLUM0562-004 07/01/2021

ADAIR, AUDRAIN, BOLLINGER, BOONE, BUTLER, CALLAWAY, CAMDEN, CAPE GIRARDEAU, CARTER, CHARITON, CLARK, COLE, COOPER, CRAWFORD, DENT, DUNKLIN, FRANKLIN, GASCONADE, GRUNDY, HOWARD, HOWELL, IRON, JEFFERSON, KNOX, LEWIS, LINCOLN, LINN, LIVINGSTON, MACON, MADISON, MARIES, MARION, MERCER, MILLER, MISSISSIPPI, MONITEAU, MONROE, MONTGOMERY, NEW MADRID, OREGON, OSAGE, PEMISCOTT, PERRY, PHELPS, PIKE, PULASKI, PUTNAM, RALLS, RANDOLPH, REYNOLDS, RIPLEY, ST. CHARLES, ST. FRANCOIS, STE. GENEVIEVE, ST. LOUIS, SCHUYLER, SCOTLAND, SCOTT, SHANNON, SHELBY, STODDARD, SULLIVAN, TEXAS, WARREN, WASHINGTON, AND WAYNE COUNTIES.

	Rates	Fringes
Plumbers and Pipefitters		
Mechanical Contracts		
including all piping and		
temperature control work		
\$7.0 million & under.....	\$ 43.16	21.49
Mechanical Contracts		
including all piping and		
temperature control work		
over \$7.0 million.....	\$ 45.10	27.85

PLUM0562-016 07/01/2021

CAMDEN, COLE, CRAWFORD, FRANKLIN, JEFFERSON, MARIES, MILLER, MONITEAU, OSAGE, PHELPS, PULASKI, ST. CHARLES, ST. LOUIS (City and County), WARREN and WASHINGTON COUNTIES

	Rates	Fringes
Plumbers		
Mechanical Contracts		
including all piping and		
temperature control work		
\$7.0 million & under.....	\$ 43.16	21.49
Mechanical Contracts		
including all piping and		
temperature control work		
over \$7.0 million.....	\$ 45.10	27.85

TEAM0013-001 05/01/2021

	Rates	Fringes
Truck drivers (ADAIR, BUTLER,		
CLARK, DUNKIN, HOWELL, KNOX,		
LEWIS, OREGON, PUTNAM,		
RIPLEY, SCHUYLER AND SCOTLAND		
COUNTIES)		
GROUP 1.....	\$ 31.44	14.75
GROUP 2.....	\$ 31.60	14.75
GROUP 3.....	\$ 31.59	14.75
GROUP 4.....	\$ 31.71	14.75

Truck drivers (AUDRAIN,
BOLLINGER, BOONE, CALLAWAY,
CAPE GIRARDEAU, CARTER, COLE,
CRAWFORD, DENT, GASCONADE,
IRON, MACON, MADISON, MARIES,
MARION, MILLER, MISSISSIPPI,

MONROE, MONTGOMERY, NEW
MADRID, OSAGE, PEMISCOT,
PERRY, PHELPS, PIKE, PULASKI,
RALLS, REYNOLDS, ST.
FRANCOIS, STE. GENEVIEVE,
SCOTT, SHANNON, SHELBY,
STODDARD, TEXAS, WASHINGTON
AND WAYNE COUNTIES)

GROUP 1.....	\$ 32.17	14.75
GROUP 2.....	\$ 32.33	14.75
GROUP 3.....	\$ 32.32	14.75
GROUP 4.....	\$ 32.44	14.75

Truck drivers (FRANKLIN,
JEFFERSON and ST. CHARLES
COUNTIES)

GROUP 1.....	\$ 34.53	14.75
GROUP 2.....	\$ 34.64	14.75
GROUP 3.....	\$ 34.68	14.75
GROUP 4.....	\$ 34.75	14.75

Truck drivers (LINCOLN and
WARREN COUNTIES)

GROUP 1.....	\$ 33.18	14.75
GROUP 2.....	\$ 33.29	14.75
GROUP 3.....	\$ 34.33	14.75
GROUP 4.....	\$ 33.40	14.75

TRUCK DRIVERS CLASSIFICATIONS:

GROUP 1: Flat Bed Trucks, Single Axle; Station Wagons;
Pickup Trucks; Material Trucks, Single Axle; Tank Wagon,
Single Axle

GROUP 2: Agitator and Transit Mix Trucks

GROUP 3: Flat Bed Trucks, Tandem Axle; Articulated Dump
Trucks; Material Trucks, Tandem Axle; Tank Wagon, Tandem
Axle

GROUP 4: Semi and/or Pole Trailers; Winch, Fork & Steel
Trucks; Distributor Drivers and Operators; Tank Wagon,
Semi-Trailer; Insley Wagons, Dumpsters, Half-Tracks,
Speedace, Euclids and other similar equipment; A-Frame and
Derrick Trucks; Float or Low Boy

TEAM0056-001 05/01/2020

Rates Fringes

Truck drivers (ANDREW,
BARTON, BATES, BENTON,
CALDWELL, CAMDEN, CARROLL,
CEDAR, CHARITON, CHRISTIAN,
CLINTON, COOPER, DADE,
DALLAS, DAVIESS, DEKALB,
DOUGLAS, GREENE, HENRY,
HICKORY, HOWARD, JASPER,
LACLEDE, LAWRENCE, LINN,
LIVINGSTON, MONITEAU, MORGAN,
NEWTON, PETTIS, POLK,
RANDOLPH, ST. CLAIR, SALINE,
VERNON, WEBSTER AND WRIGHT
COUNTIES)

GROUP 1.....	\$ 31.37	14.25
GROUP 2.....	\$ 31.53	14.25

GROUP 3.....	\$ 31.52	14.25
GROUP 4.....	\$ 31.64	14.25
Truck drivers: (ATCHISON, BARRY, GENTRY, GRUNDY, HARRISON, HOLT, MCDONALD, MERCER, NODAWAY, OZARK, STONE, SULLIVAN, TANEY AND WORTH COUNTIES)		
GROUP 1.....	\$ 30.64	14.25
GROUP 2.....	\$ 30.80	14.25
GROUP 3.....	\$ 30.79	14.25
GROUP 4.....	\$ 30.91	14.25
Truck drivers; (BUCHANAN, JOHNSON AND LAFAYETTE COUNTIES)		
GROUP 1.....	\$ 32.58	14.25
GROUP 2.....	\$ 32.69	14.25
GROUP 3.....	\$ 32.73	14.25
GROUP 4.....	\$ 32.80	14.25

TRUCK DRIVER CLASSIFICATIONS

GROUP 1: Flat bed trucks single axle; station wagons; pickup trucks; material trucks single axle; tank wagons single axle.

GROUP 2: Agitator and transit mix-trucks.

GROUP 3: Flat bed trucks tandem axle; articulated dump trucks; material trucks tandem axle; tank wagons tandem axle.

GROUP 4: Semi and/or pole trailers; winch, fork & steel trucks; distributor drivers & operators; tank wagons semi-trailer; insley wagons, dumpsters, half-tracks, speedace, euclids & other similar equipment; A-frames and derrick trucks; float or low boy.

TEAM0245-001 03/26/2012

BARRY, BARTON, CAMDEN, CEDAR, CHRISTIAN, DALLAS, DENT, DOUGLAS,
GREENE, HICKORY, HOWELL, JASPER, LACLEDE, LAWRENCE, MCDONALD,
MILLER, NEWTON, OZARK, PHELPS, POLK, PULASKI, SHANNON, STONE,
TANEY, TEXAS, VERNON, WEBSTER AND WRIGHT COUNTIES

Rates Fringes

Truck drivers:		
Traffic Control Service Driver.....	\$ 20.45	0.00

PAID HOLIDAYS: New Year's Day, Decoration Day, July 4th,
Labor Day, Thanksgiving Day, Christmas Day, employee's
birthday and 2 personal days.

TEAM0541-001 04/01/2021

CASS, CLAY, JACKSON, PLATTE AND RAY COUNTIES

Rates Fringes

Truck drivers:

GROUP 1.....	\$ 33.71	16.75
GROUP 2.....	\$ 32.62	16.75
GROUP 3.....	\$ 33.14	16.75

TRUCK DRIVERS CLASSIFICATIONS

GROUP 1: Mechanics and Welders, Field; A-Frame Low Boy-Boomer Driver.

GROUP 2: Articulated Dump Truck; Insley Wagons: Dump Trucks, Excavating, 5 cu yds and over; Dumpsters; Half-Tracks: Speedace: Euclids & similar excavating equipment Material trucks, Tandem Two teams; Semi-Trailers; Winch trucks-Fork trucks; Distributor Drivers and Operators; Agitator and Transit Mix; Tank Wagon Drivers, Tandem or Semi; One Team; Station Wagons; Pickup Trucks; Material Trucks, Single Axle; Tank Wagon Drivers, Single Axle

GROUP 3: Oilers and Greasers - Field

TEAM0682-002 05/01/2017

ST LOUIS CITY AND COUNTY

	Rates	Fringes
Truck drivers:		
GROUP 1.....	\$ 33.30	13.79+a+b+c+d
GROUP 2.....	\$ 33.50	13.79+a+b+c+d
GROUP 3.....	\$ 33.60	13.79+a+b+c+d

a. PENSION: 5/1/2012 - \$182.20 per week.

b. HAZMAT PREMIUM: If Hazmat certification on a job site is required by a state or federal agency or requested by project owner or by the employer, employees on that job site shall receive \$1.50 premium pay.

TRUCK DRIVERS CLASSIFICATIONS

GROUP 1 - Pick-up trucks; forklift, single axle; flatbed trucks; job site ambulance, and trucks or trailers of a water level capacity of 11.99 cu. yds. or less

GROUP 2 - Trucks or trailers of a water level capacity of 12.0 cu yds. up to 22.0 cu yds. including euclids, speedace and similar equipment of same capacity and compressors

GROUP 3 - Trucks or trailers of a water level capacity of 22.0 cu. yds & over including euclids, speedace & all floats, flatbed trailers, boom trucks, winch trucks, including small trailers, farm wagons tilt-top trailers, field offices, tool trailers, concrete pumps, concrete conveyors & gasoline tank trailers and truck mounted mobile concrete mixers

FOOTNOTE FOR TRUCK DRIVERS:

c. PAID HOLIDAYS: Christmas Day, Independence Day, Labor Day, Memorial Day, Veterans Day, New Years Day, Thanksgiving Day

d. PAID VACATION: 3 days paid vacation for 600 hours of service in any one contract year; 4 days paid vacation for

800 hours of service in any one contract year; 5 days paid vacation for 1,000 hours of service in any one contract year. When such an employee has completed 3 years of continuous employment with the same employer and then works the above required number of hours, he shall receive double the number of days of vacation specified above. When such an employee has completed 10 years of continuous employment with the same employer and then works the above required number of hours, he shall receive triple the number of days of vacation specified above. When such an employee has completed 15 years of continuous employment with the same employer and then works the above required number of hours, he shall receive 4 times the number of days of vacation specified above.

WELDERS - Receive rate prescribed for craft performing operation to which welding is incidental.

=====
Note: Executive Order (EO) 13706, Establishing Paid Sick Leave for Federal Contractors applies to all contracts subject to the Davis-Bacon Act for which the contract is awarded (and any solicitation was issued) on or after January 1, 2017. If this contract is covered by the EO, the contractor must provide employees with 1 hour of paid sick leave for every 30 hours they work, up to 56 hours of paid sick leave each year. Employees must be permitted to use paid sick leave for their own illness, injury or other health-related needs, including preventive care; to assist a family member (or person who is like family to the employee) who is ill, injured, or has other health-related needs, including preventive care; or for reasons resulting from, or to assist a family member (or person who is like family to the employee) who is a victim of, domestic violence, sexual assault, or stalking. Additional information on contractor requirements and worker protections under the EO is available at www.dol.gov/whd/govcontracts.

Unlisted classifications needed for work not included within the scope of the classifications listed may be added after award only as provided in the labor standards contract clauses (29CFR 5.5 (a) (1) (ii)).

The body of each wage determination lists the classification and wage rates that have been found to be prevailing for the cited type(s) of construction in the area covered by the wage determination. The classifications are listed in alphabetical order of ""identifiers"" that indicate whether the particular rate is a union rate (current union negotiated rate for local), a survey rate (weighted average rate) or a union average rate (weighted union average rate).

Union Rate Identifiers

A four letter classification abbreviation identifier enclosed in dotted lines beginning with characters other than ""SU"" or ""UAVG"" denotes that the union classification and rate were prevailing for that classification in the survey. Example: PLUM0198-005 07/01/2014. PLUM is an abbreviation identifier of

the union which prevailed in the survey for this classification, which in this example would be Plumbers. 0198 indicates the local union number or district council number where applicable, i.e., Plumbers Local 0198. The next number, 005 in the example, is an internal number used in processing the wage determination. 07/01/2014 is the effective date of the most current negotiated rate, which in this example is July 1, 2014.

Union prevailing wage rates are updated to reflect all rate changes in the collective bargaining agreement (CBA) governing this classification and rate.

Survey Rate Identifiers

Classifications listed under the "SU" identifier indicate that no one rate prevailed for this classification in the survey and the published rate is derived by computing a weighted average rate based on all the rates reported in the survey for that classification. As this weighted average rate includes all rates reported in the survey, it may include both union and non-union rates. Example: SULA2012-007 5/13/2014. SU indicates the rates are survey rates based on a weighted average calculation of rates and are not majority rates. LA indicates the State of Louisiana. 2012 is the year of survey on which these classifications and rates are based. The next number, 007 in the example, is an internal number used in producing the wage determination. 5/13/2014 indicates the survey completion date for the classifications and rates under that identifier.

Survey wage rates are not updated and remain in effect until a new survey is conducted.

Union Average Rate Identifiers

Classification(s) listed under the UAVG identifier indicate that no single majority rate prevailed for those classifications; however, 100% of the data reported for the classifications was union data. EXAMPLE: UAVG-OH-0010 08/29/2014. UAVG indicates that the rate is a weighted union average rate. OH indicates the state. The next number, 0010 in the example, is an internal number used in producing the wage determination. 08/29/2014 indicates the survey completion date for the classifications and rates under that identifier.

A UAVG rate will be updated once a year, usually in January of each year, to reflect a weighted average of the current negotiated/CBA rate of the union locals from which the rate is based.

WAGE DETERMINATION APPEALS PROCESS

1.) Has there been an initial decision in the matter? This can be:

- * an existing published wage determination
- * a survey underlying a wage determination
- * a Wage and Hour Division letter setting forth a position on a wage determination matter
- * a conformance (additional classification and rate) ruling

On survey related matters, initial contact, including requests for summaries of surveys, should be with the Wage and Hour Regional Office for the area in which the survey was conducted because those Regional Offices have responsibility for the Davis-Bacon survey program. If the response from this initial contact is not satisfactory, then the process described in 2.) and 3.) should be followed.

With regard to any other matter not yet ripe for the formal process described here, initial contact should be with the Branch of Construction Wage Determinations. Write to:

Branch of Construction Wage Determinations
Wage and Hour Division
U.S. Department of Labor
200 Constitution Avenue, N.W.
Washington, DC 20210

2.) If the answer to the question in 1.) is yes, then an interested party (those affected by the action) can request review and reconsideration from the Wage and Hour Administrator (See 29 CFR Part 1.8 and 29 CFR Part 7). Write to:

Wage and Hour Administrator
U.S. Department of Labor
200 Constitution Avenue, N.W.
Washington, DC 20210

The request should be accompanied by a full statement of the interested party's position and by any information (wage payment data, project description, area practice material, etc.) that the requestor considers relevant to the issue.

3.) If the decision of the Administrator is not favorable, an interested party may appeal directly to the Administrative Review Board (formerly the Wage Appeals Board). Write to:

Administrative Review Board
U.S. Department of Labor
200 Constitution Avenue, N.W.
Washington, DC 20210

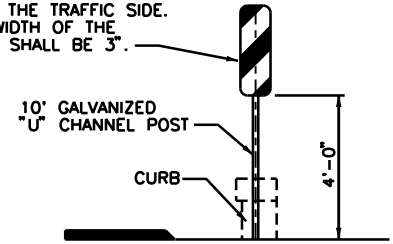
4.) All decisions by the Administrative Review Board are final.

=====

END OF GENERAL DECISION"

9/8/2021 4:07:42 PM
 Y:\projects\2021\1210363\1\CD\00\1210363_02_GeneralNotes.dgn
 kspode
 V:\projects\2021\1210363\1\CD\00\1210363_02_GeneralNotes.dgn
 9/8/2021 4:07:42 PM
 Defaut
 12
 Y:\projects\2021\1210363\1\CD\00\1210363_02_GeneralNotes.dgn
 V:\projects\2021\1210363\1\CD\00\1210363_02_GeneralNotes.dgn
 9/8/2021 4:07:42 PM

TYPE 3 OBJECT MARKER.
 MARKER BOARD SHALL BE A
 VERTICAL RECTANGLE MEASURING
 10" X 30" WITH ALTERNATING BLACK
 AND REFLECTORIZED YELLOW STRIPES
 SLOPING DOWN AT A 45 DEGREE
 ANGLE TOWARD THE TRAFFIC SIDE.
 THE MINIMUM WIDTH OF THE
 YELLOW STRIPE SHALL BE 3".



TYPE-3 OBJECT MARKER

NOTE: FOUR REQUIRED-ONE AT EACH
 CORNER OF THE BRIDGE.

GENERAL NOTES:

DESIGN SPECIFICATIONS A.A.S.H.T.O.-2020 LRFD BRIDGE DESIGN
 SPECIFICATIONS, 9TH EDITION.

DESIGN LOADING
 HL-93 24'-0" ROADWAY
 15# PER SQ. FT. FUTURE WEARING SURFACE
 EARTH 120# PER CU. FT.. EQUIVALENT FLUID PRESSURE 30#
 PER CU. FT.
 SUPERSTRUCTURE: SIMPLY SUPPORTED NON-COMPOSITE FOR
 DEAD LOAD. CONTINUOUS COMPOSITE FOR LIVE LOAD.

DESIGN UNIT STRESSES:
 CLASS B CONCRETE (SUBSTRUCTURE) $f'_c=3,000$ P.S.I.
 CLASS B1 CONCRETE (SAFETY BARRIER CURB) $f'_c=4,000$ P.S.I.
 CLASS B2 CONCRETE (SUPERSTRUCTURE EXCEPT SAFETY
 BARRIER CURB AND PRESTRESSED GIRDERS) $f'_c=4,000$ P.S.I.
 REINFORCING STEEL (GRADE 60) $f_y=60,000$ P.S.I.
 STEEL PILE $f_b=9,000$ P.S.I.

NOTE: THE CONTRACTOR SHALL FOLLOW THE SPECIFICATIONS
 AS STATED IN THE "MISSOURI STANDARD SPECIFICATIONS FOR
 HIGHWAY CONSTRUCTION 2020 & SUPPLEMENTAL SPECIFICATIONS.

NOTE: FOR PRE-STRESSED GIRDER STRESSES SEE SHEET
 NO. 6

BEARINGS SHALL BE 60 DUROMETER NEOPRENE
 PADS. COST OF FURNISHING, FABRICATING AND INSTALLING
 NEOPRENE BEARING PADS COMPLETE IN PLACE, SHALL BE PAID
 FOR AT THE CONTRACT UNIT PRICE FOR PLAIN NEOPRENE
 BEARING PADS PER EACH.

ALL JOINT FILLER SHALL MEET THE REQUIREMENT OF
 STD. SPEC. 1057.7.4.

MINIMUM CLEARANCE TO REINFORCING STEEL SHALL BE 1 1/2 "
 UNLESS OTHERWISE NOTED.

NOTE: SEISMIC PERFORMANCE CATEGORY - A
 ACCELERATION COEFFICIENT - 4%

NOTE: FOR B.M. SEE SHEET NO. 3

NOTE: SEE SHEET NO. 3 FOR HYDROLOGICAL DATA.

NOTE: ITEMS WHERE ADDITIONAL INFORMATION IS REQUIRED,
 THE STATEMENT "SEE SPECIAL PROVISIONS" IS LISTED.

NOTE: MODOT AND FHWA MAY MAKE INSPECTIONS
 OF THE WORK AND THE CONTRACTOR SHALL
 GRANT THEM ACCESS TO ALL PARTS OF THE WORK.

NOTE: RAILING CRASH TESTED FOR AASHTO SERVICE LEVEL 1
 AND WILL PROVIDE AN EQUIVALENT TL-2 RATING IN
 ACCORDANCE WITH THE CRITERIA OF NCHRP REPORT 350.

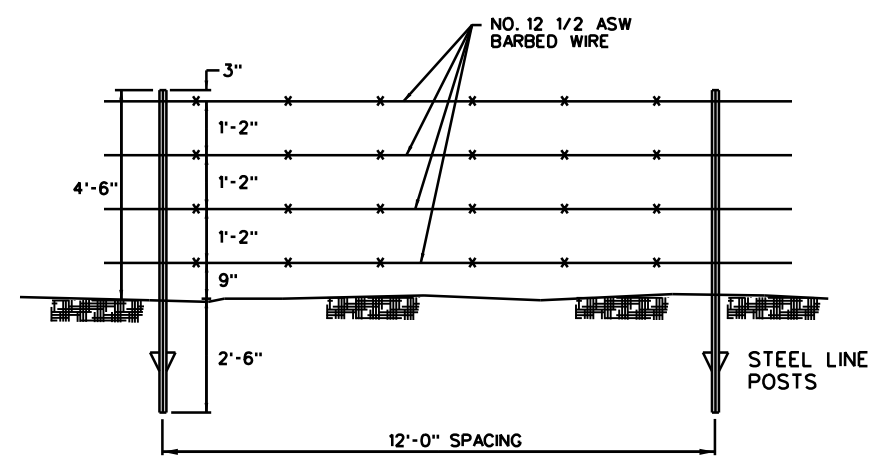
ESTIMATED QUANTITIES FOR ALTERNATE SLABS		
TYPE OF SLAB	REINFORCEMENT (LBS.)	CONCRETE (C.Y.)
CAST-IN-PLACE CONVENTIONAL FORMS	57,270	149
PRE-STRESSED PANEL FORMS	47,164	127

1

ESTIMATED QUANTITIES BRIDGE				
ITEM	UNIT	SUBSTRUCTURE	SUPERSTRUCTURE	TOTAL
TRAFFIC CONTROL	L.S.			1.0
MOBILIZATION	L.S.			1.0
BRIDGE REMOVAL	L.S.			1.0
CLASS B CONCRETE	CU. YD.	95		95
CLASS B-2 CONCRETE	CU. YD.		149	149
PLAIN NEOPRENE BEARING PADS	EACH			16
PRESTRESSED CONCRETE I-GIRDER (50' SPAN)	EACH			4
PRESTRESSED CONCRETE I-GIRDER (100' SPAN)	EACH			4
REINFORCING STEEL	LBS.			57,270
TYPE 2 ROCK BLANKET	TON			1,380
THRIE BEAM RAIL	L.F.			353
HP 10x42 H PILE	L.F.	270		270
CLASS 1 EXCAVATION	C.Y.			52
TYPE 3 GEOTEXTILE FABRIC	S.Y.			1410
PILE POINT REINFORCEMENT	EACH	12		12
TYPE 3 OBJECT MARKERS	EACH			4
SILT FENCE	L.F.			1,270

ESTIMATED QUANTITIES ROADWAY				
ITEM	UNIT	SUBSTRUCTURE	SUPERSTRUCTURE	TOTAL
CLASS A EXCAVATION	CU. YD.			115
EMBANKMENT	CU. YD.			2080
ROAD STONE	TON			240
SEEDING, FERTILIZING & MULCHING	ACRE			0.80
15" CMP	L.F.			50
8" HOPE	L.F.			36

1



NOTE: BRACED WOODEN POSTS SHALL
 BE USED AT CORNERS AND
 DEFLECTIONS IN FENCE. EACH THIRD
 LINE POST SHALL BE WOOD.

FENCE DETAIL

NOTE: ALL CONCRETE ABOVE LOWER CONSTRUCTION JOINT IN END BENTS IS INCLUDED WITH SUPERSTRUCTURE QUANTITIES.
 ALL REINFORCEMENT IN THE END BENTS IS INCLUDED WITH SUPERSTRUCTURE QUANTITIES.

DRAWING NOT TO SCALE - FOLLOW DIMENSIONS

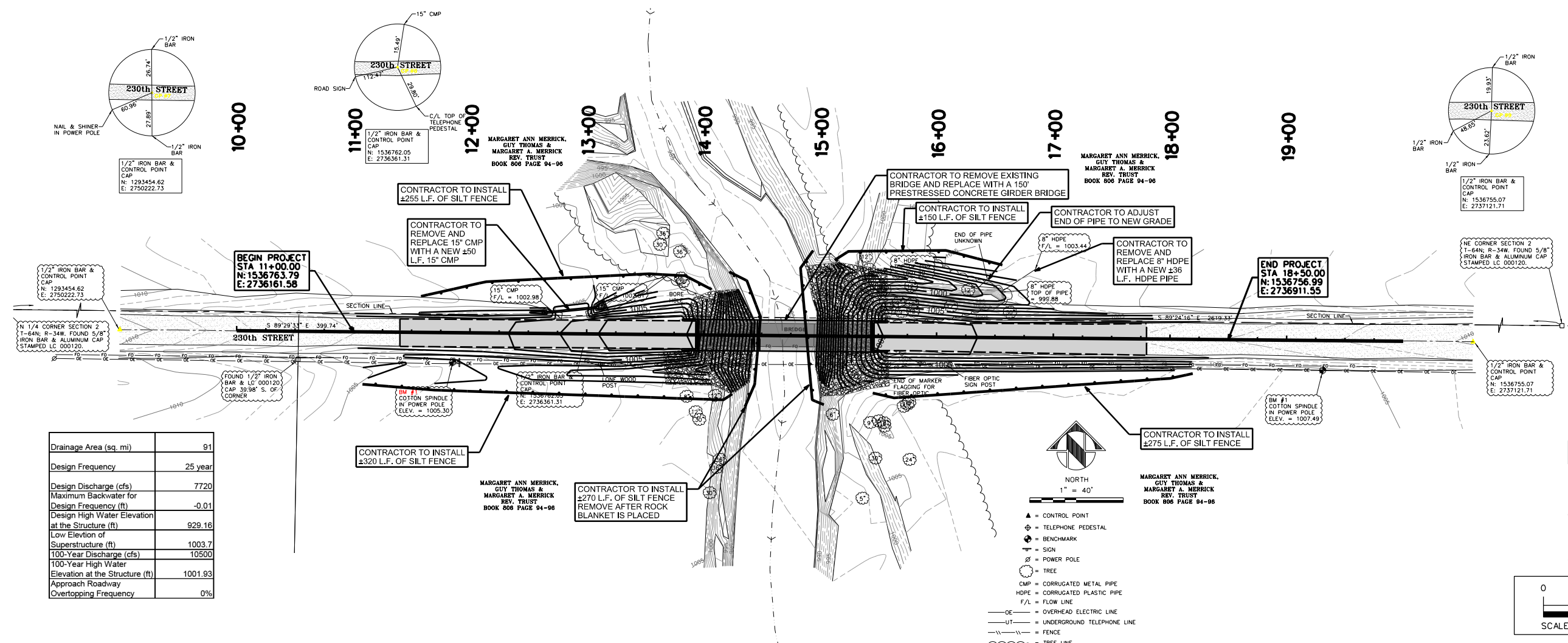
REVISION	DATE	BY
1	9/11/21	AM
MARK	REVISION	DATE
Engineer: CZ	Checked By: AM	Scale: 1"=
Technician: KG	Date: 04/07/21	Field Bc:
Snyder & Associates Engineers & Planners, Inc. Missouri State Certificate of Authority #200608544		



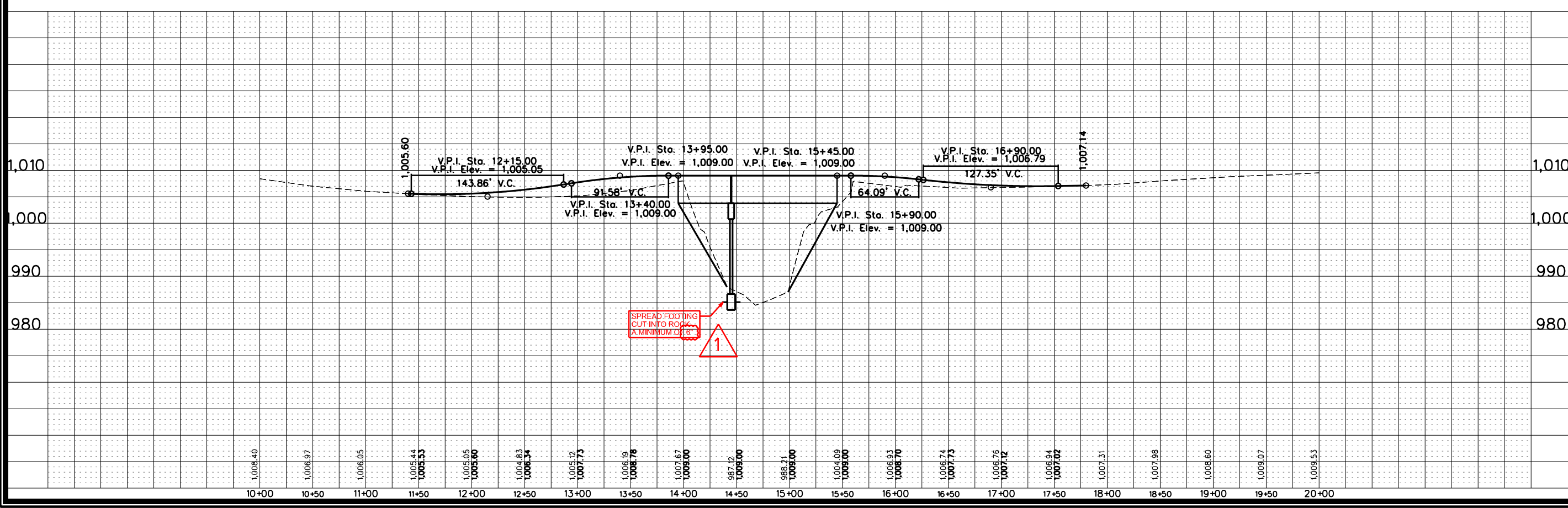
NODAWAY COUNTY BRO-B074(62)
 GENERAL NOTES AND QUANTITIES
SNYDER & ASSOCIATES
 ENGINEERS & PLANNERS, INC.
 www.snyder-associates.com
 NODAWAY COUNTY, MO
 802 FRANCIS STREET
 ST. JOSEPH, MO 64501
 816-364-5222



9/8/2021 4:07:44 PM
 Y:\projects\2021\1210363\1210363_03_Plan and Profile.dgn
 kscade
 V:\projects\2021\1210363\1210363_03_Plan and Profile.dgn
 9/8/2021 4:07:44 PM
 V:\projects\2021\1210363\1210363_03_Plan and Profile.dgn



Drainage Area (sq. mi)	91
Design Frequency	25 year
Design Discharge (cfs)	7720
Maximum Backwater for Design Frequency (ft)	-0.01
Design High Water Elevation at the Structure (ft)	929.16
Low Elevation of Superstructure (ft)	1003.7
100-Year Discharge (cfs)	10500
100-Year High Water Elevation at the Structure (ft)	1001.93
Approach Roadway Overtopping Frequency	0%



MARK	REVISION	DATE	BY
Engineer: CZ	Checked By: AM	Scale: 1" =	
Technician: KG	Date: 04/07/21	Field Bc:	

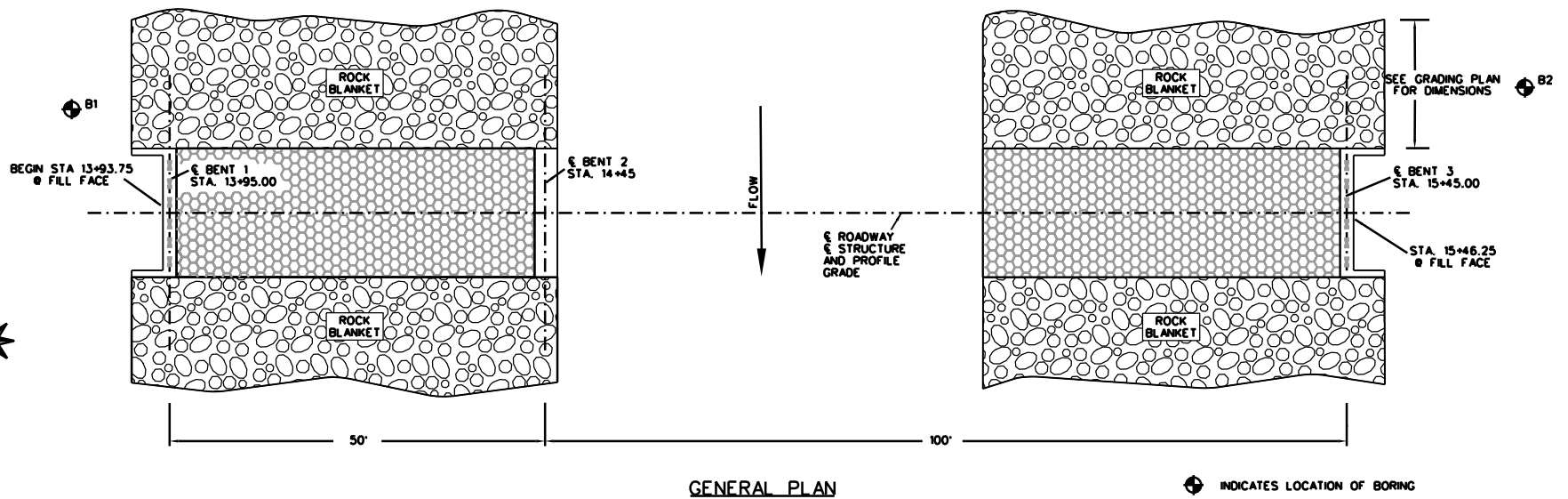
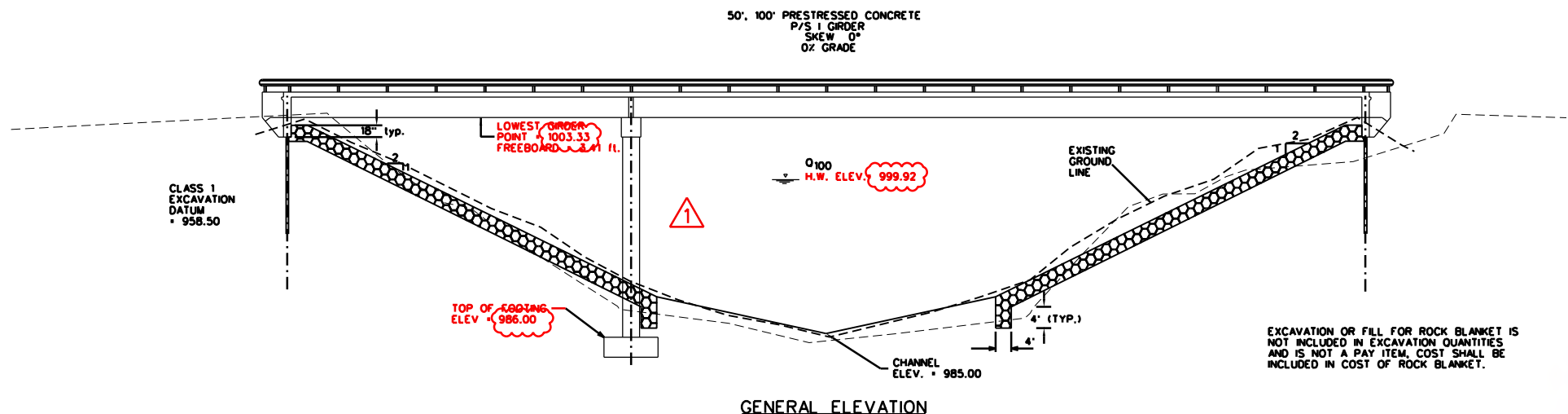
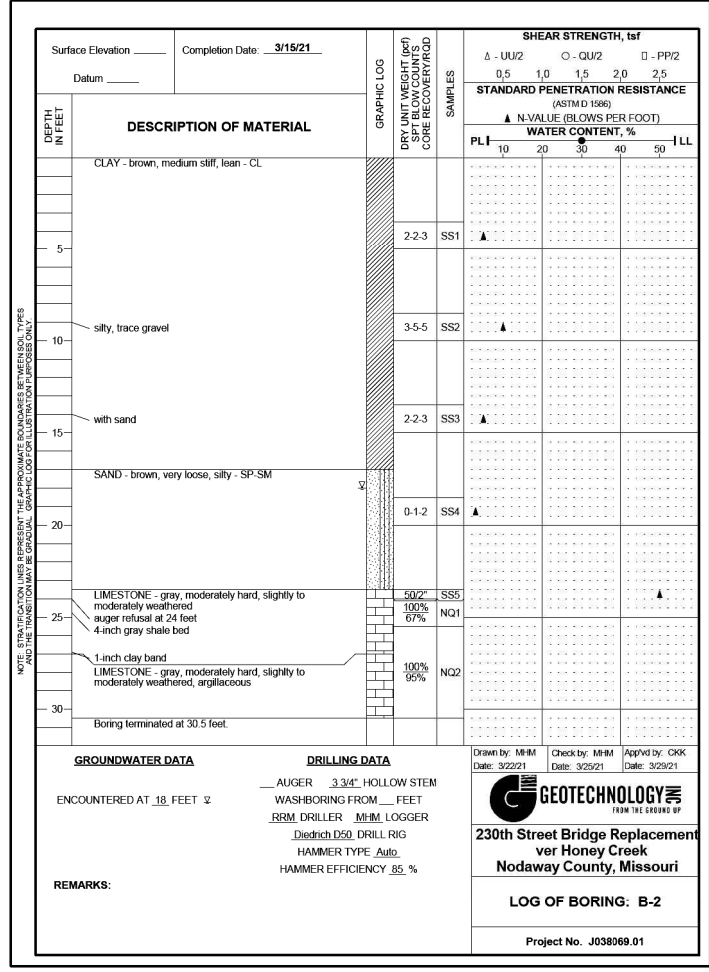
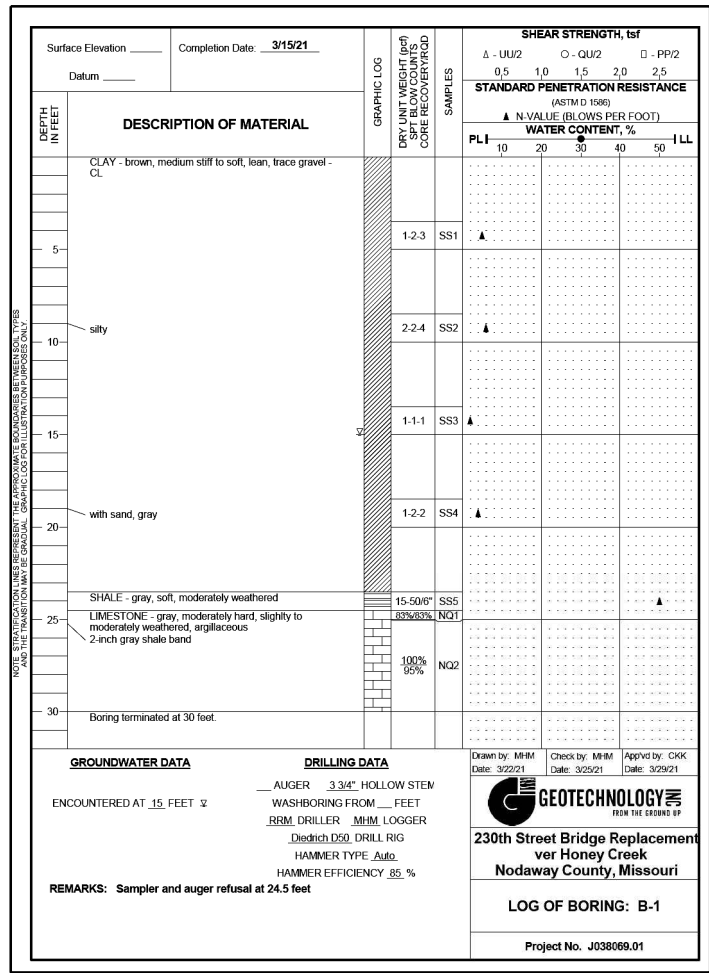
Project No: 1210363
 Sheet 3 of 23



NODAWAY COUNTY BRO-B074(62)
 NODAWAY COUNTY, MO
 PLAN AND PROFILE
SNYDER & ASSOCIATES
 ENGINEERS & PLANNERS, INC.
 802 FRANCIS STREET
 ST. JOSEPH, MO 64501
 816-364-5222
 www.snyder-associates.com

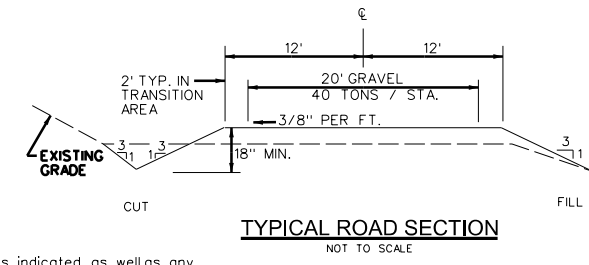
SNYDER & ASSOCIATES
 Project No: 1210363
 Sheet 3 of 23

9/8/2021 4:07:45 PM
 Y:\env\dot\bl\...
 PS_L_Grder_Square_Sub
 kspode
 V:\Projects\2021\210363\11\CD\01\210363_04_Substructure_Constr.dgn



	Bent No.	1	2	3
Bearing Pile	Type	End		End
	Kind	HP10x42		HP10x42
	Number	6		6
	Approximate Length	22'		23'
	Pile Driving Verification Method	Gates		Gates
	Design Bearing (Tons)	25		36
Spread Footings	Criteria for Minimum Tip Penetration	Settlement		Settlement
	Foundation Material		Rock	
	Design Bearing Tons/SF		3	

(*) If no minimum tip elevation is shown then piles are estimated to bear on rock or refusal material from soils information included in these plans. Drive every other pile, then drive intermediate pile. For boring logs, see specifications.



Notice and Disclaimer Regarding Boring Log Data
 The locations of all subsurface borings for this structure are shown on the substructure plan sheet for this structure. The boring data for all locations indicated, as well as any other boring logs or other factual records of subsurface data and investigations performed by the department for the design of the project, are shown on Sheet No. 4 and may be included in the Electronic Bridge Deliverables. They will also be available from the Project Contact upon written request. No greater significance or weight should be given to the boring data depicted on the plan sheets than is given to the subsurface data available from the district or elsewhere.

The Commission does not represent or warrant that any such boring data accurately depicts the conditions to be encountered in constructing this project. A contractor assumes all risks it may encounter in basing its bid prices, time or schedule of performance on the boring data depicted here or those available from the district, or on any other documentation not expressly warranted, which the contractor may obtain from the Commission.

MARK	REVISION	DATE	BY
1	REVISED GRIDER, H.W. & FOOTING ELEV	9/1/21	AM
Engineer:	Checked By:	Date:	Field Bc:
CZ	AM	04/07/21	1"
Technician:	KG		

Snyder & Associates Engineers & Planners, Inc.
 Missouri State Certificate of Authority #200608544

Sheet 4 of 23



NODAWAY COUNTY BRO-B074(62)

SUBSTRUCTURE LAYOUT

NODAWAY COUNTY, MO

802 FRANCIS STREET
 ST. JOSEPH, MO 64501
 816-364-5222

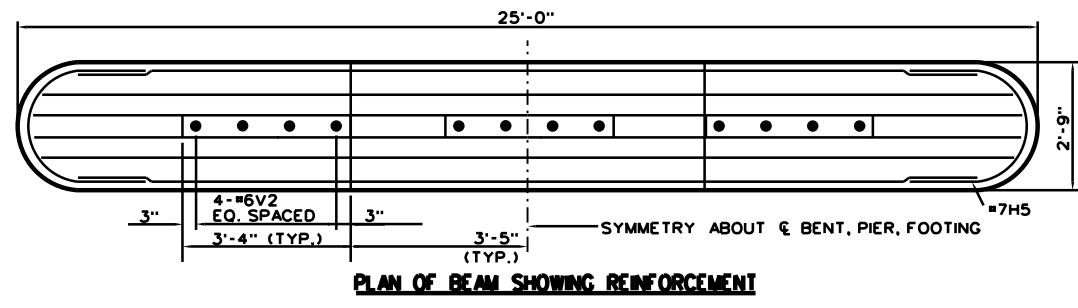
SNYDER & ASSOCIATES
 ENGINEERS & PLANNERS, INC.
 www.snyder-associates.com

SNYDER & ASSOCIATES

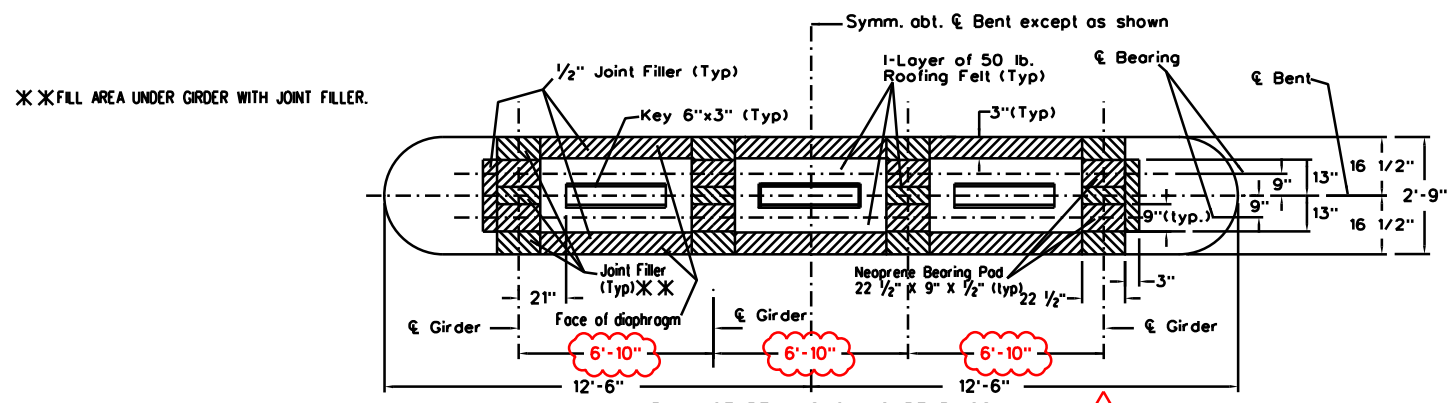
Project No: 1210363

Sheet 4 of 23

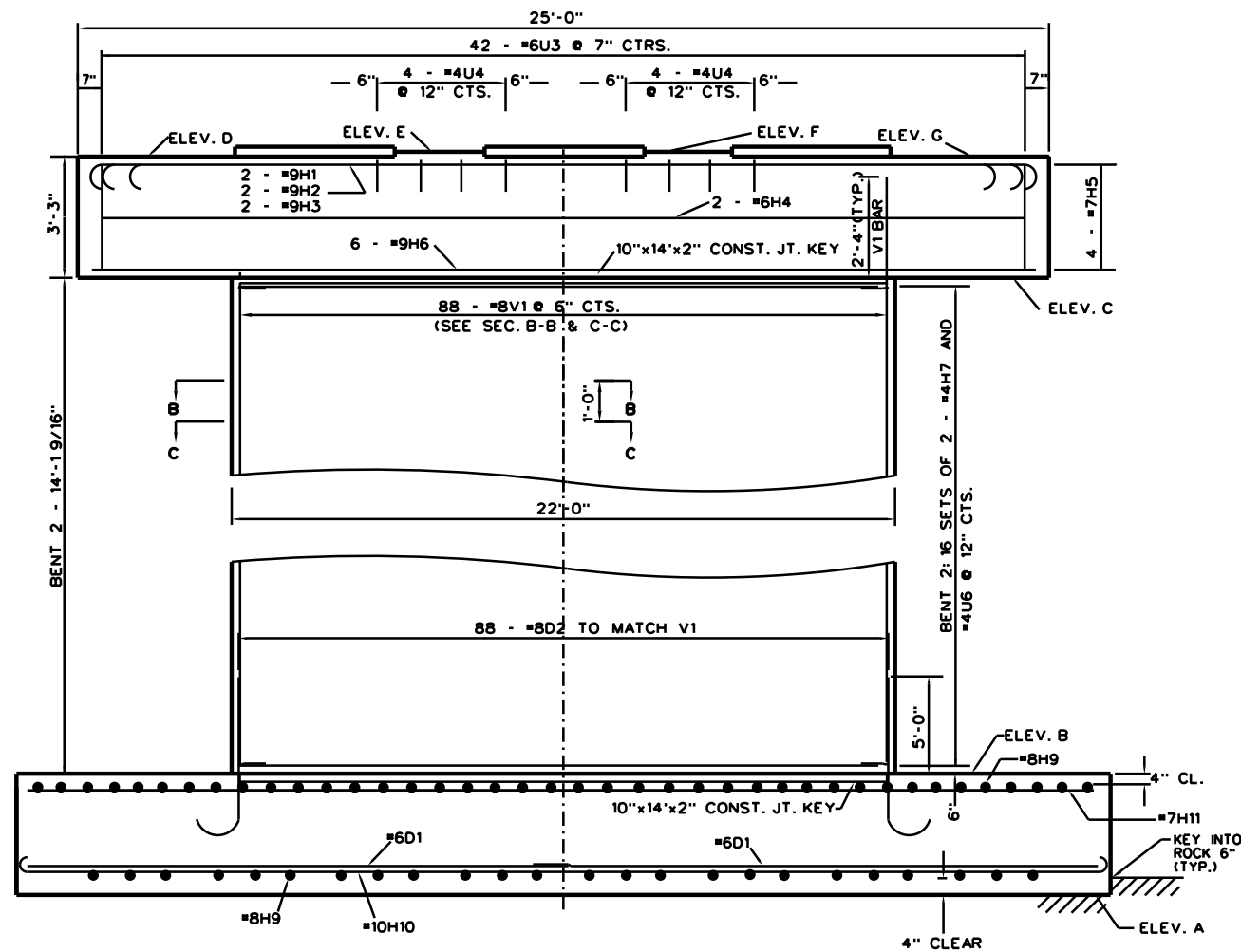
9/8/2021 4:07:46 PM PS_L_Grder_Square_inbent V:\projects\2021\1210363\1\CD\00\1210363_06_intermediate_bent.dwg kspoude V:\projects\2021\1210363\1\CD\00\1210363_06_intermediate_bent.dwg 9/17/21 AM



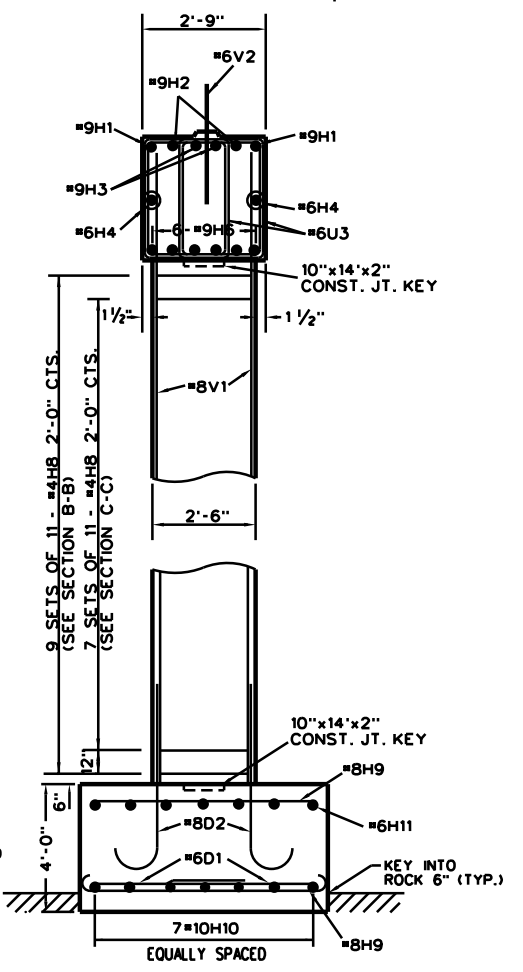
PLAN OF BEAM SHOWING REINFORCEMENT



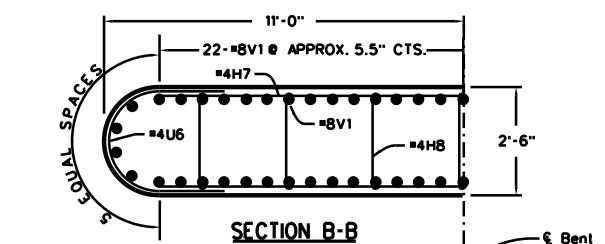
PLAN OF BEAM SHOWING BEARINGS SQUARE



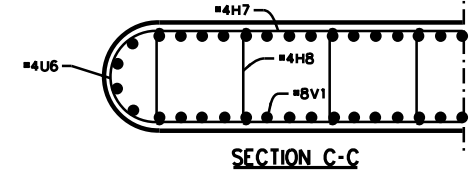
ELEVATION



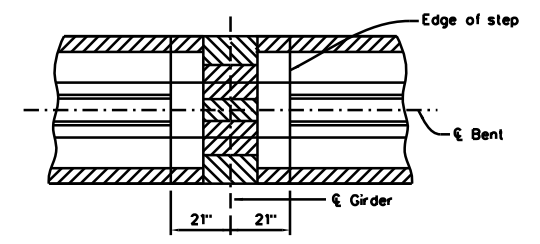
SECTION NEAR & BENT



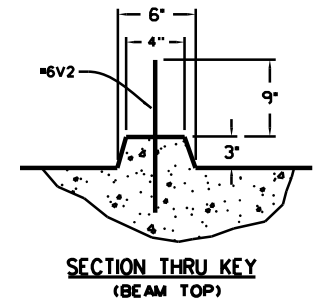
SECTION B-B



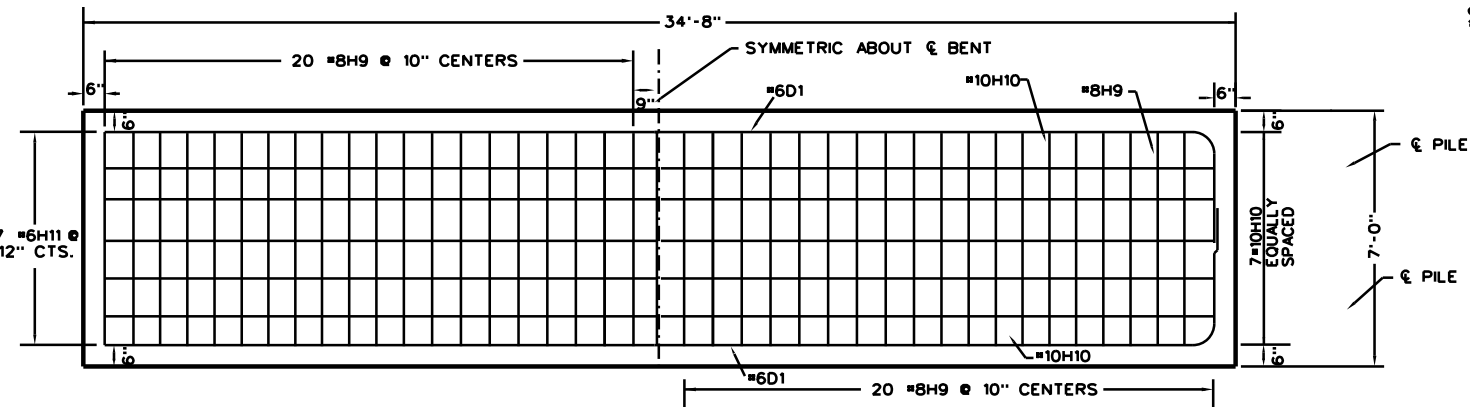
SECTION C-C



PART PLAN SHOWING BEAM STEP SQUARE BENT



SECTION THRU KEY (BEAM TOP)



TOP REINFORCEMENT

PLAN OF FOOTING SHOWING REINFORCEMENT

BOTTOM REINFORCEMENT

TABLE OF ELEVATIONS	
ELEVATION	BENT 2
A	982.00
B	986.00
C	1000.13
D	1003.38
E	1003.49
F	1003.38
G	1003.38

THIS DRAWING IS NOT TO SCALE. FOLLOW DIMENSIONS

REVISION	DATE	BY
1	9/17/21	AM
MARK	REVISION	DATE
Engineer: CZ	Checked By: AM	Scale: 1"=
Technician: KG	Date: 04/07/21	Field Bc: 1"=
Snyder & Associates Engineers & Planners, Inc. Missouri State Certificate of Authority #200608544		



NODAWAY COUNTY BRO-B074(62)
 INTERMEDIATE BENT DETAILS
SNYDER & ASSOCIATES
 ENGINEERS & PLANNERS, INC.
 www.snyder-associates.com
 NODAWAY COUNTY, MO
 802 FRANCIS STREET
 ST. JOSEPH, MO 64501
 816-364-5222



Concrete for prestressed girders shall be Class A-1 with $f'c = 7,000$ psi and $f'ci = 5,000$ psi.

(+) indicates prestressing strand.

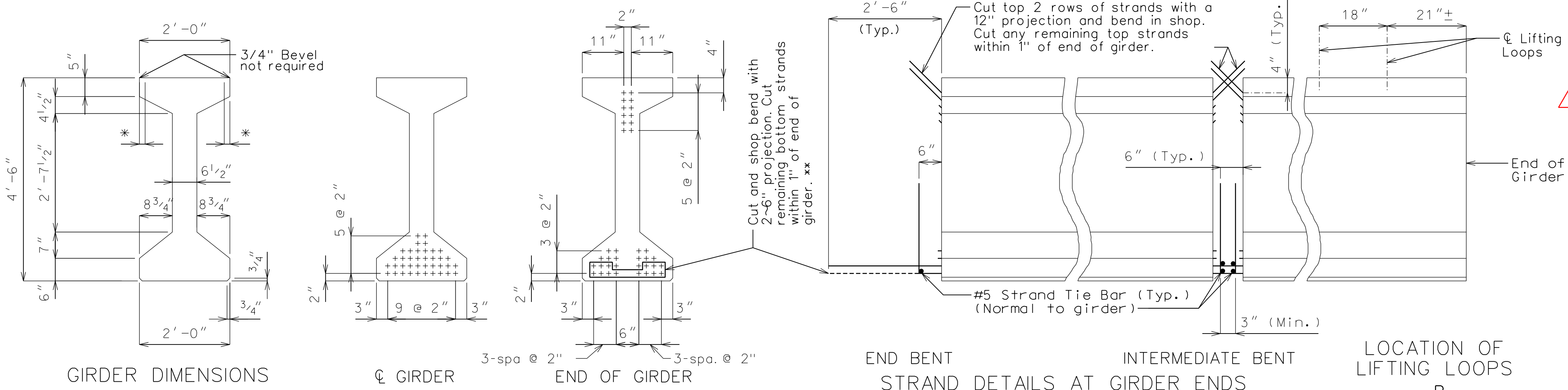
Use 38 strands with an initial prestress force of 1177 kips.

Prestressing tendons shall be uncoated, seven-wire, low-relaxation strands, 1/2 inch diameter in accordance with AASHTO M 203, Grade 270. Pretensioned members shall be in accordance with Sec 1029.

* At contractor's option a 3" to 3 1/4" smooth finish strip is permitted to facilitate placement of preformed fiber expansion joint material or expanded or extruded polystyrene bedding material for the prestressed panels.

** At the contractor's option the location for bent-up strands may be varied from that shown for fully bonded strands only. The total number of bent-up strands shall not be changed. One strand tie bar is required for each layer of bent-up strands except at end bents which require one bar on the bottom layer of strands only. No additional payment will be made if additional strand tie bars are required.

Fabricator shall be responsible for location and design of lifting devices.



BILL OF REINFORCING STEEL - EACH GIRDER

NO.	SIZE & MARK	ACTUAL LENGTH	SHAPE	BENDING DIAGRAM
4	6 A1	50'-8"	20	
206	6 B1	5'-11"	11	
16	6 B2	5'-4"	11	
111	4 C1	2'-2"	10	
222	4 D1	3'-0"	9	

All dimensions are out to out.

Hooks and bends shall be in accordance with the CRSI Manual of Standard Practice for Detailing Reinforced Concrete Structures, Stirrup and Tie Dimensions.

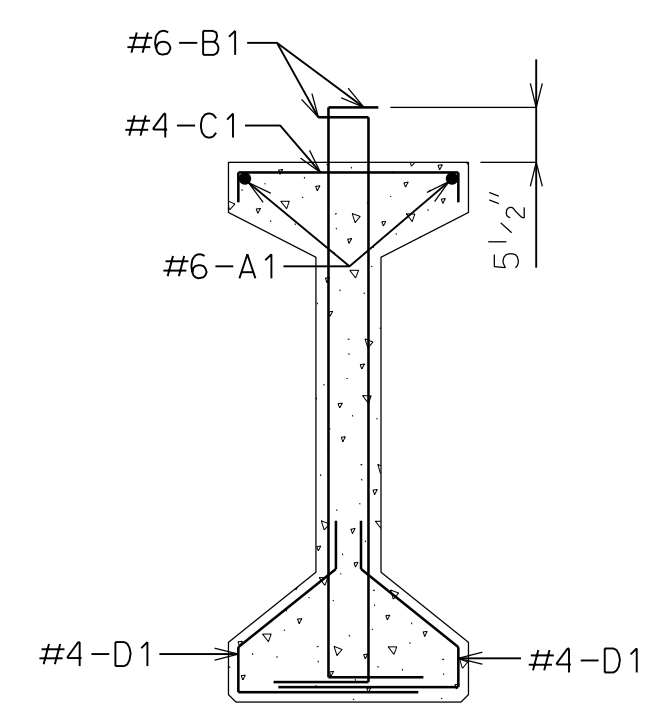
Actual lengths are measured along centerline of bar to the nearest inch.

Minimum clearance to reinforcing shall be 1".

All reinforcement shall be Grade 60.

The two D1 bars may be furnished as one bar at the fabricator's option.

All B1 bars shall be epoxy coated.



SECTION B-B

Strands not shown for clarity.

Cost of 3/4" coil tie rods placed in diaphragms will be considered completely covered by the contract unit price for Prestressed Concrete I-Girder.

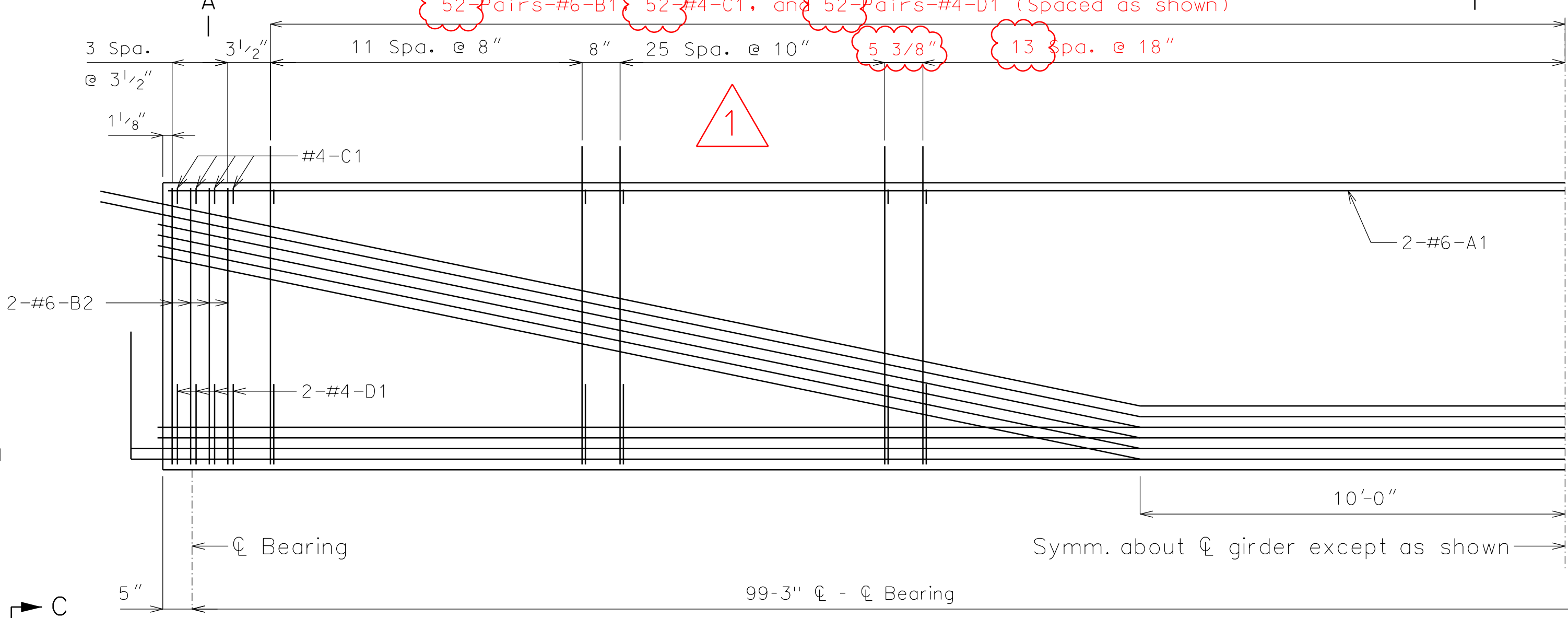
Coilties shall be held in place in the forms by slotted wire-setting-studs projecting through forms. Studs are to be left in place or replaced with temporary plugs until girders are erected, then replaced by coil tie rods.

For location of coilties at concrete bent diaphragms, see Sheets No. 5.

The 1 1/2" holes shall be cast in the web for steel intermediate diaphragms. Drilling is not allowed. For location of holes and details of steel intermediate diaphragms, see Sheet No. 8.

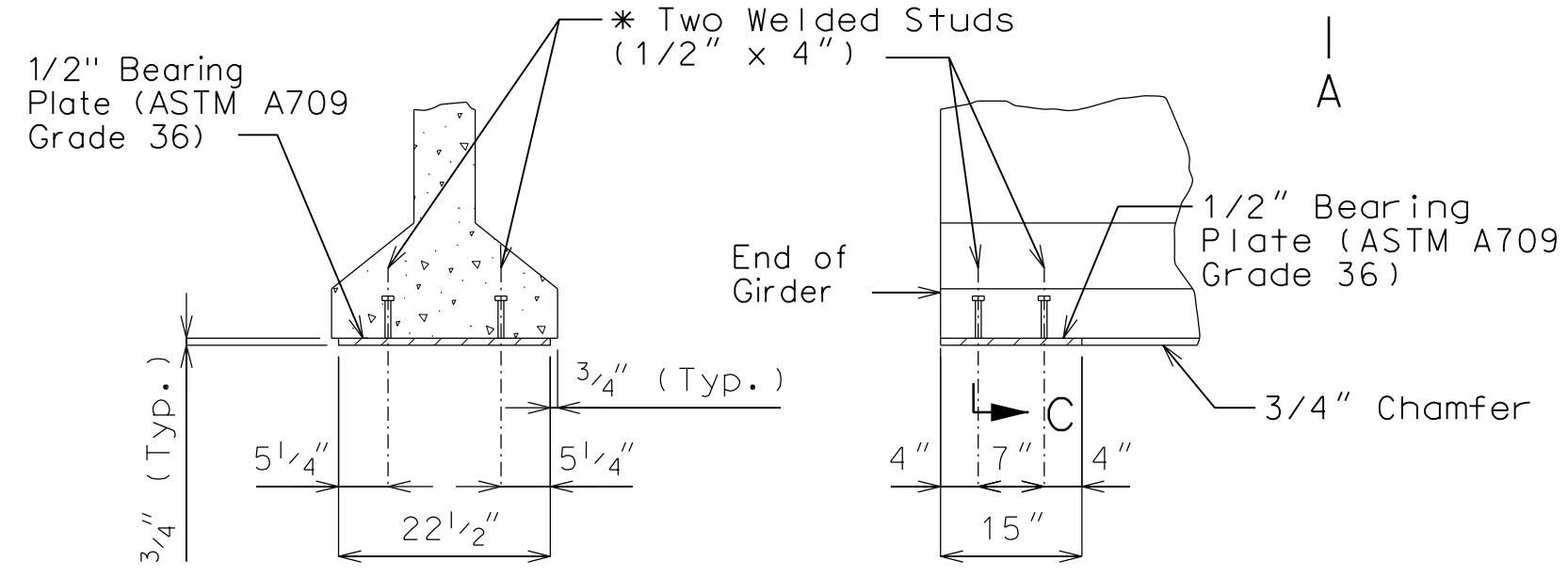
For Girder Camber Diagram, see Sheet No. 7.

*** Length of coil tie rods at exterior face of exterior girders at end bents = 2'-6".



HALF ELEVATION OF GIRDER SPAN 100'-0" (100'-11 1/2" GIRDER LENGTH)

Exterior and interior girders are the same, except for coilties, and coil inserts for slab drains and holes for steel intermediate diaphragms.

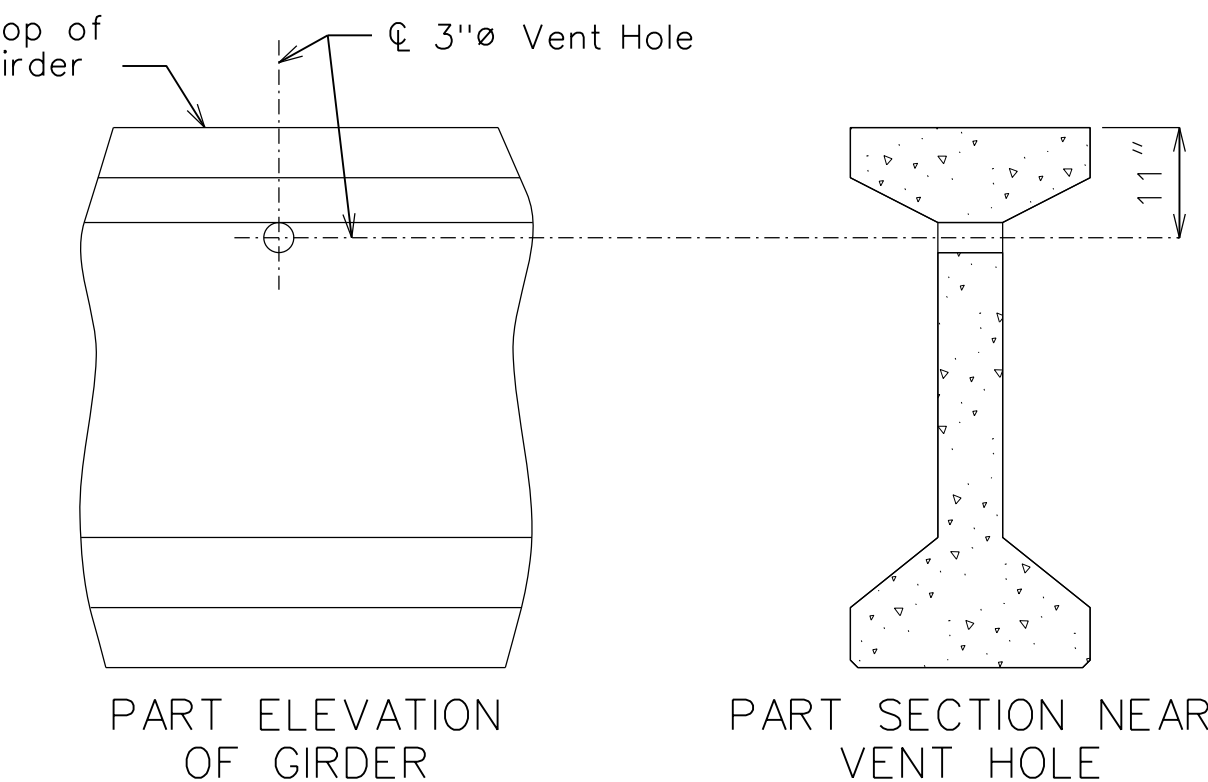


SECTION C-C PART ELEVATION AT END OF GIRDER

BEARING PLATE DETAILS

Galvanize the 1/2" bearing plate (ASTM A709 Grade 36) in accordance with ASTM A123.

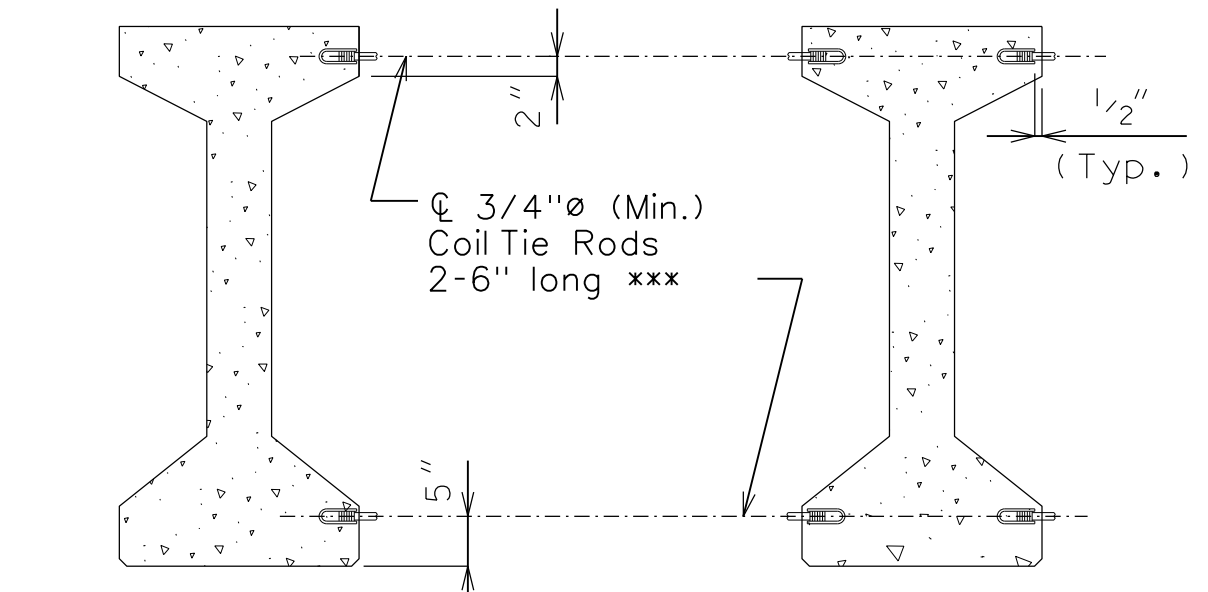
Cost of furnishing, galvanizing, and installing the 1/2" bearing plate (ASTM A709 Grade 36) and welded studs in the prestressed girder will be considered completely covered by the contract unit price for Prestressed Concrete I-Girder.



PART ELEVATION OF GIRDER PART SECTION NEAR VENT HOLE

DETAILS OF VENT HOLE

Place vent holes at or near upgrade 1/3 point of girders and clear reinforcing steel or strands by 1 1/2" minimum and steel intermediate diaphragm bolt connections by 6" minimum.



EXTERIOR GIRDERS AT INT. BENTS EXTERIOR GIRDERS AT END BENTS INTERIOR GIRDERS AT ALL BENTS

DETAILS OF COIL TIES

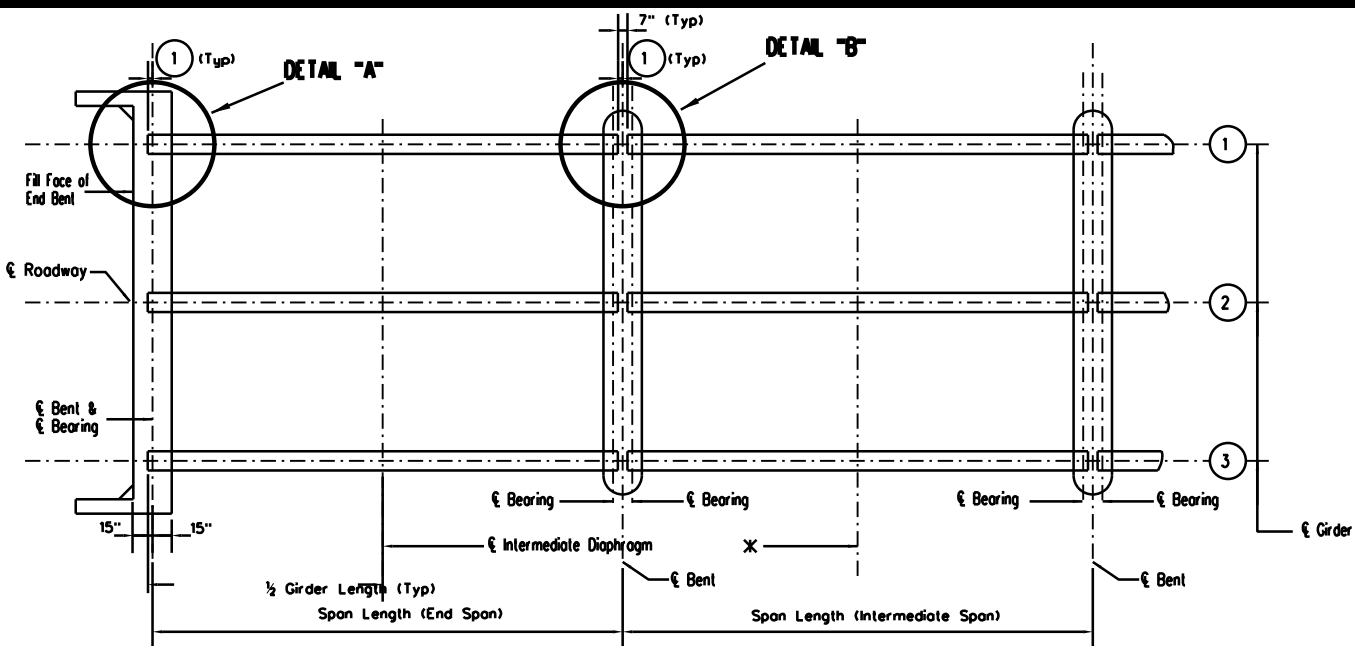
MARK	REVISION	DATE	BY
Engineer: CZ	Checked By: AM	Scale: 1"=	
Technician: KG	Date: 04/07/21	Field Bk:	



NODAWAY COUNTY BRO-B074(62)
PRESTRESSED CONCRETE I-GIRDER TYPE VI (100'-10") NODAWAY COUNTY, MO
SNYDER & ASSOCIATES
ENGINEERS & PLANNERS, INC.
 802 FRANCIS STREET
 ST. JOSEPH, MO 64501
 816-364-5222
 www.snyder-associates.com



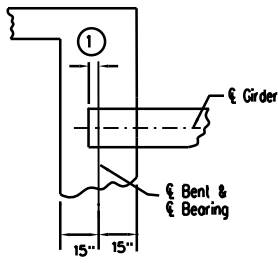
9/8/2021 4:07:27 PM
 Y:\projects\12010363\12010363.dwg
 PS_I-Girder-Square.Dwg
 kspoude
 9/17/21 AM
 1
 REVISED SPACING
 MARK
 REVISION
 Engineer: CZ
 Technician: KG
 Date: 04/07/21
 Scale: 1"=1'
 Field Bc:
 Snyder & Associates Engineers & Planners, Inc.
 Missouri State Certificate of Authority #200608544
 Sheet 10 of 23



SQUARE STRUCTURES

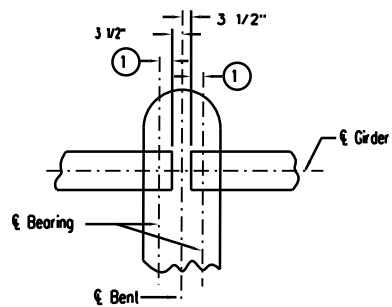
Intermediate diaphragms shall be required on span lengths greater than 50 feet.

Note: Diaphragms of intermediate bents are vertical.

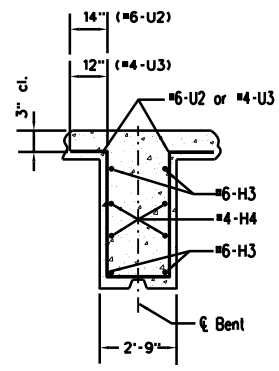


DETAIL "A"

See Prestressed Concrete I-Girder sheet.

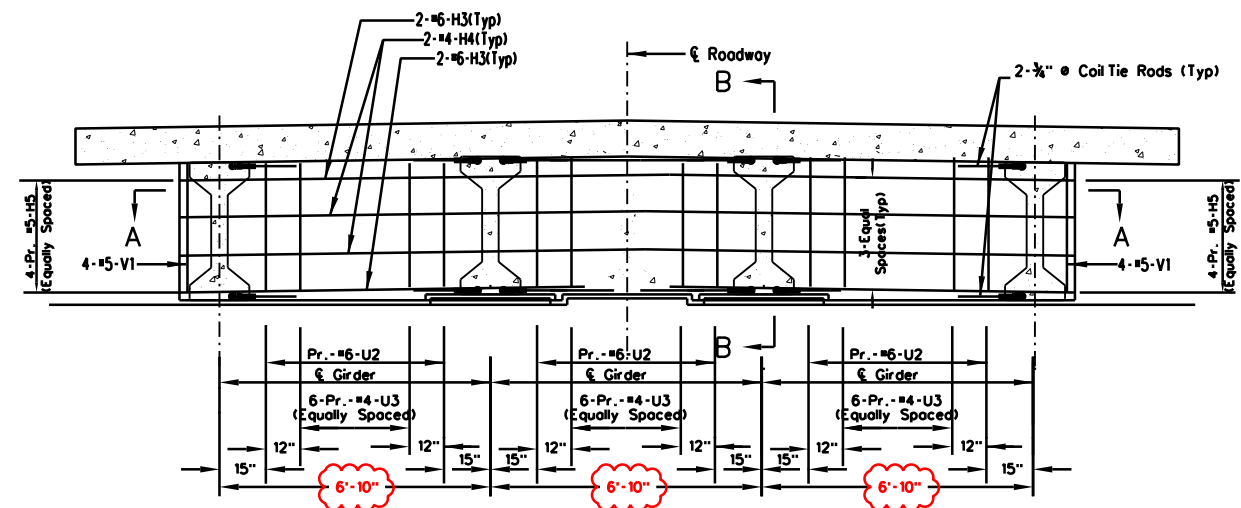


DETAIL "B"



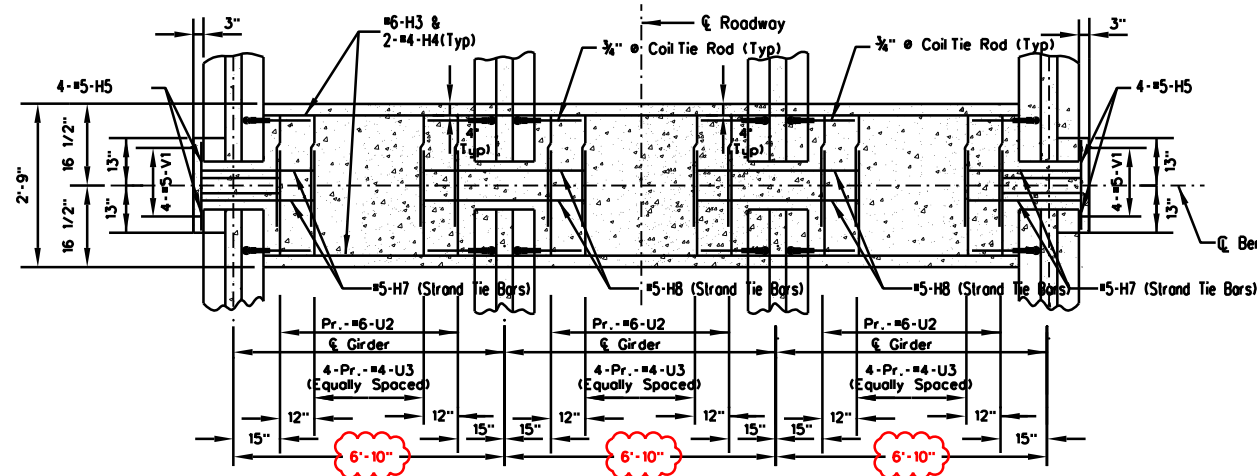
SECTION B-B

NOTE: For location and number of #5-H7 and HB Strand Tie Bars see Prestressed Concrete I-Girder sheet.



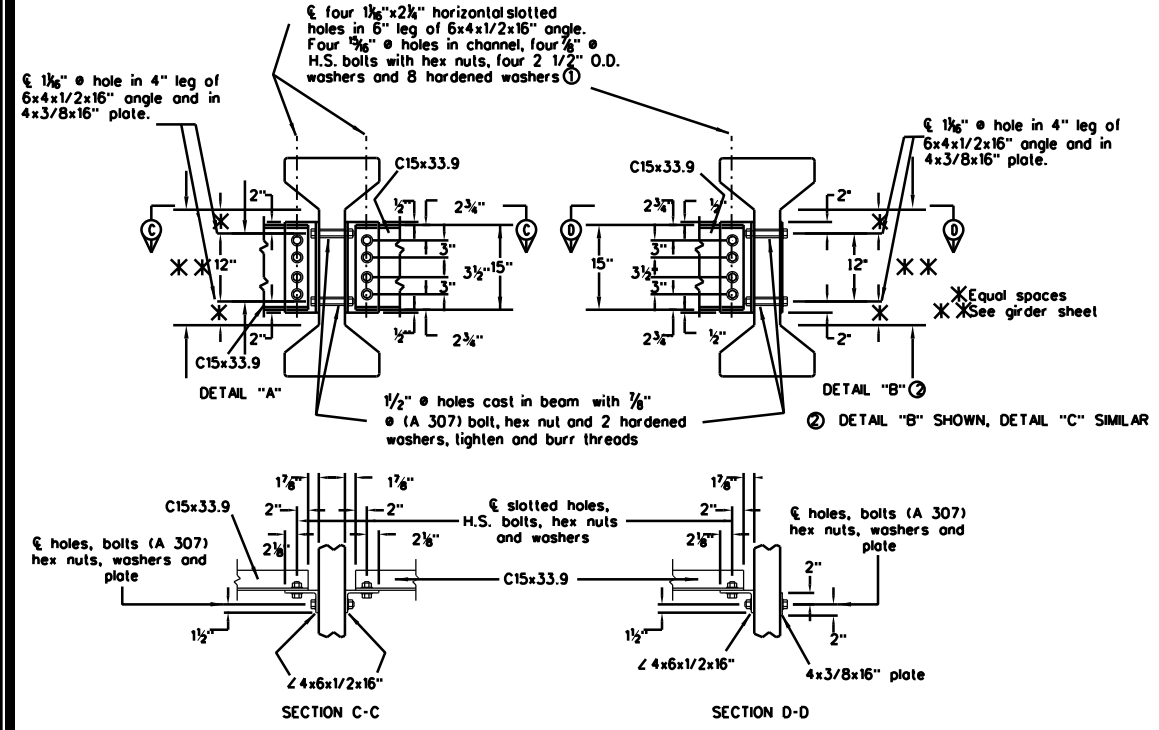
SECTION NEAR INTERMEDIATE BENT

(Normal to Roadway)



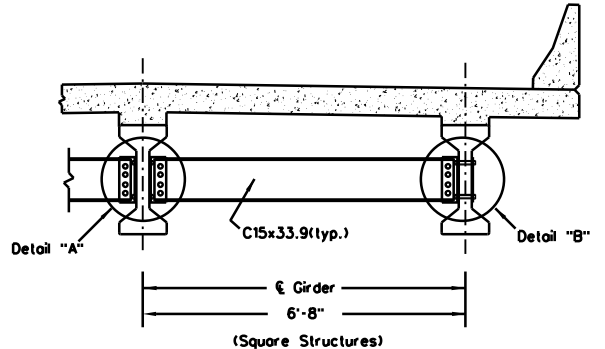
SECTION A-A (Square)

DETAILS OF DIAPHRAGMS AT INTERMEDIATE BENTS

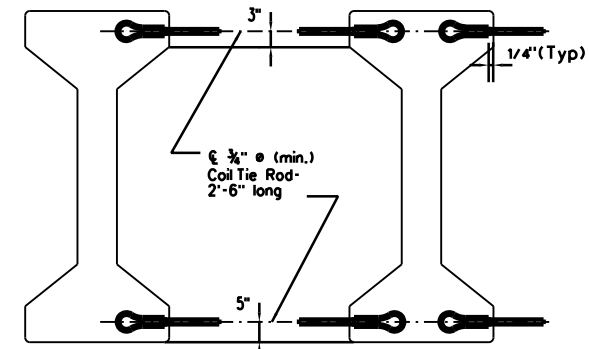


NOTE: THIS DRAWING IS NOT TO SCALE. FOLLOW DIMENSIONS.

Notes:
 In lieu of 2 1/2" O.D. washers, contractor may substitute a 3/16" (Min. thickness) plate with four 3/16" holes in 1 hardened washer per bolt.
 All H.S. bolts may be tensioned by turn-of-nut method.
 All diaphragm materials including bolts, nuts and washers shall be galvanized.
 Fabricated structural steel shall be A36 except as noted.
 Payment for furnishing and installing steel intermediate diaphragms shall be included in contract price for Prestressed Concrete I-Girders.
 Shop drawings will not be required for steel intermediate diaphragms and angle connections.



PART SECTION SHOWING INTERMEDIATE DIAPHRAGMS



EXTERIOR GIRDERS (Intermediate Bents Only)
INTERIOR GIRDERS (All Bents)
EXTERIOR GIRDERS (End Bents Only)

DETAILS OF COIL TIES AT BENTS

Note: Cost of 3/8" Coil Tie Rods placed in diaphragms is included in contract unit price for Prestress Concrete Members.



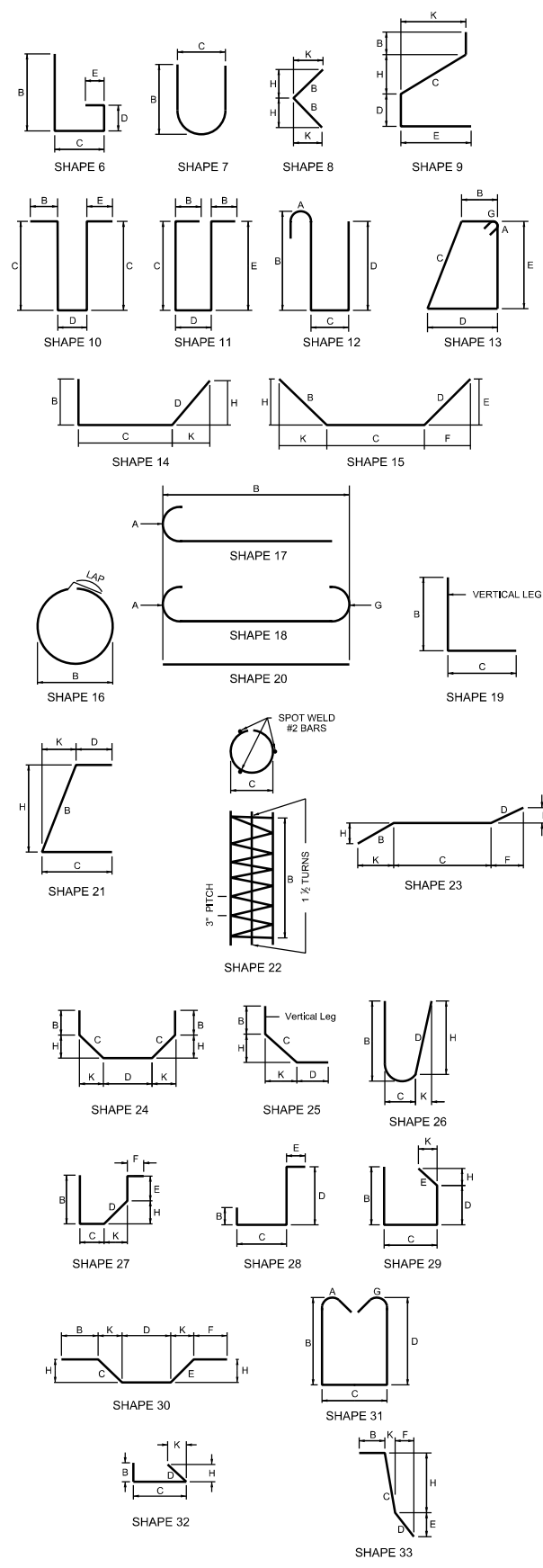
NODAWAY COUNTY BRO-B074(62)
 DIAPHRAGM DETAILS (AT INTERMEDIATE BENTS) NODAWAY COUNTY, MO
SNYDER & ASSOCIATES
 ENGINEERS & PLANNERS, INC.
 802 FRANCIS STREET
 ST. JOSEPH, MO 64501
 www.snyder-associates.com
 816-364-5222



9/8/2021 4:07:48 PM
 Y:\snyder\p\13_1210363\13_1210363\13_1210363.dwg
 kcgoude
 V:\snyder\p\13_1210363\13_1210363\13_1210363.dwg
 V:\snyder\p\13_1210363\13_1210363\13_1210363.dwg
 BAR 12
 9/21/21 AM
 1 REVISED BAR BILL

COMPLETE BILL OF REINFORCING STEEL

NO. REQD.	MARK NO.	LOCATION	EPOXY (E)	SHAPE NO.	STIRRUP (S)	SUBSTR (X)	VARIES (V)	NO. EACH	DIMENSIONS												NOMINAL LENGTH	ACTUAL LENGTH	WEIGHT
									B	C	D	E	F	H	K	IN.	FT.	IN.	FT.	IN.			
EACH END BENT																							
14	6F1	WING BRACE		25					14.000	4	2.500	14.000			2	11.750	2	11.750	6	7	6	6	137
12	6F2	DIAPHRAGM		19					2	2.250	5	6.000							7	8	7	6	135
4	5H1	DIAPHRAGM		20					4	6.000									4	6	4	6	19
12	7H2	BEAM AND DIAPHRAGM		20					26	5.000									26	5	26	5	648
5	6H3	BEAM AND DIAPHRAGM		20					26	5.000									26	5	26	5	198
6	6H4	DIAPHRAGM		20					1	9.000									1	9	1	9	16
9	6H5	DIAPHRAGM		20					4	7.000									4	7	4	7	62
48	6H6	WING		20					13	5.000									13	5	13	5	967
26	5U1	DIAPHRAGM		10	S				5	0.000	2	3.000							12	3	12	1	328
36	6U2	DIAPHRAGM		19	S				5	0.000	3	6.500							8	7	8	5	455
26	5U3	BEAM		10	S				4	11.000	2	3.000							12	1	11	11	323
20	4U4	BEAM		13	S				2	3.000	2	9.000	2	3.000	2	9.000			10	9	10	6	140
52	6V1	WING		20					8	0.000									8	0	8	0	625
TOTAL EACH END BENT = 4,053																							
INTERMEDIATE BENT																							
2	9H1	BEAM		18					22	3.000									22	3	22	3	151
2	9H2	BEAM		18					24	3.000									24	3	24	3	165
2	9H3	BEAM		18					24	8.000									24	8	24	8	168
2	6H4	BEAM		20					22	3.000									22	3	22	3	67
8	7H5	BEAM		7					3	9.000	2	5.000							8	9	8	9	143
6	9H6	BEAM		20					22	3.000									22	3	22	3	454
42	6U3	BEAM		13	S				1	9.750	3	0.000	1	9.750	3	0.000			8	11	8	9	552
8	4U4	BEAM		10	S							6.000	2	6.000					3	6	3	5	18
12	6V2	BEAM		20					21	0.000									21	0	21	0	32
12	6H3	INT. BT. DIAPH.		20					4	7.000									4	7	4	7	83
12	4H4	INT. BT. DIAPH.		20					6	0.000									6	0	6	0	48
16	5H5	INT. BT. DIAPH.		19					10.000	2	8.000								3	6	3	5	57
4	5H7	INT. BT. DIAPH.		20					3	5.000									3	5	3	5	14
4	5H8	INT. BT. DIAPH.		20					4	6.000									4	6	4	6	19
12	6U2	INT. BT. DIAPH.		28	S				2	3.000	4	8.500	14.000						8	2	7	10	141
24	4U3	INT. BT. DIAPH.		28	S				2	1.000	4	8.500	12.000						7	10	7	8	123
8	5V1	INT. BT. DIAPH.		20					4	11.000									4	11	4	11	41
88	8D2	COLUMN/FOOTING		17					7	0.000									8	1	8	1	1899
32	4H7	COLUMN		20					16	6.000									16	6	16	6	353
176	4H8	COLUMN		32	S				4.500	2	3.000	4.250							3	0	2	5	284
32	4U6	COLUMN		7	S				3	2	3.000								10	9	10	9	230
88	8V1	COLUMN		20					16	8.000									16	8	16	8	3916
80	8H9	FOOTING		18					6	0.000									6	0	6	0	1282
7	10H10	FOOTING		18					33	8.000									33	8	33	8	1014
7	6H11	FOOTING		20					33	8.000									33	8	33	8	354
2	6D1	FOOTING		15					4	4.000	34	4.000	4	4.000					43	0	43	0	129
TOTAL INTERMEDIATE BENT = 11,737																							
CAST-IN-PLACE																							
355	6S1	SLAB		20					26	5.000									26	5	26	5	14086
92	6S3	SLAB		20					39	6.000									39	6	39	6	5458
112	5S5	SLAB		20					39	6.000									39	6	39	6	4614
928	4S9	SLAB		10	S				0	5.000	0	3.500							0	14	0	12	620
273	5S10	SLAB		20					26	5.000									26	5	26	5	7522
40	8S11	SLAB		20					48	0.000									48	0	48	0	5126
TOTAL CAST-IN-PLACE SLAB = 37,426																							
PRECAST PANEL SLAB																							
355	6S1	SLAB		20					26	5.000									26	5	26	5	14086
298	4S2	SLAB		20					3	7.000									3	7	3	7	713
92	6S3	SLAB		20					39	6.000									39	6	39	6	5458
32	5S5	SLAB		20					39	6.000									39	6	39	6	1318
928	4S9	SLAB		10	S				0	5.000	0	3.500							0	14	0	12	620
40	8S11	SLAB		20					48	0.000									48	0	48	0	5126
TOTAL PRECAST PANEL SLAB = 27,321																							



BAR SIZE	D (IN.)	180° HOOKS		90° HOOKS	
		ALL GRADES		ALL GRADES	
		A or G	J	A or G	A or G
#3	2-1/4"	5"	3"	6"	
#4	3"	6"	4"	8"	
#5	3-1/4"	7"	5"	10"	
#6	4-1/2"	8"	6"	12"	
#7	5-1/4"	10"	7"	14"	
#8	6"	11"	8"	16"	
#9	9-1/2"	15"	11-1/4"	19"	
#10	10-3/4"	17"	13-1/4"	22"	

NOTES:

All standard hooks and bends other than 180 degree to be bent with same procedure as for 90 degree standard hooks.

Hooks and bends shall be in accordance with the procedures as shown on this sheet.

E - Epoxy coated reinforcement

S - Stirrup.

X - Bar is included in substructure quantities.

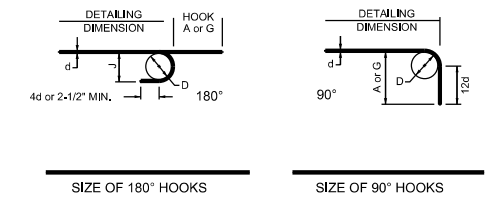
V - Bar dimensions vary in equal increments between dimensions shown on this line and the following line.

NO. EA. - Number of bars of each length.

NOMINAL LENGTHS - are based on out to out dimensions shown in bending diagrams and are listed for fabricators use. (Nearest inch).

ACTUAL LENGTHS - are measured along centerline bar to the nearest inch.

Payweights are based on actual lengths.



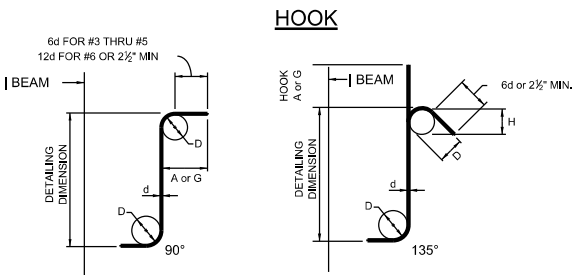
BAR SIZE	D (IN.)	HOOK A or G	APPROX. H
#3	1-1/2"	4"	2-1/2"
#4	2"	4-1/2"	3"
#5	2-1/2"	6"	3-3/4"
#6	4-1/2"	12"	4-1/2"

WEIGHT = ACTUAL LENGTH X WEIGHT PER LINER FOOT X NUMBER REQUIRED.

MAXIMUM REINFORCING LENGTHS:
 #4 and #5 bars shall be limited to a maximum length of 40'-0".
 #6 through #11 bars shall be limited to a maximum length of 60'-0".

BAR SIZE	D (IN.)	STIRRUP HOOK DIMENSIONS	
		90° HOOK	135° HOOK
#3	1-1/2"	4"	4"
#4	2"	4-1/2"	4-1/2"
#5	2-1/2"	6"	5-1/2"
#6	4-1/2"	12"	7"

NOTE: UNLESS OTHERWISE NOTED DIAMETER "D" IS THE SAME FOR ALL BENDS AND HOOKS ON A BAR.



CAST IN PLACE OPTION ONLY
 BENDING DIAGRAMS



THIS DRAWING IS NOT TO SCALE. FOLLOW DIMENSIONS

9/21/21 AM
DATE BY

1 REVISED BAR BILL
REVISION

MARK
Checked By: AM
Scale: 1"=

Engineer: CZ
Date: 04/07/21
Field Bc:

Technician: KG
Snyder & Associates Engineers & Planners, Inc.
Missouri State Certificate of Authority #200608544

802 FRANCIS STREET
ST. JOSEPH, MO 64501

816-364-5222
www.snyder-associates.com

NODAWAY COUNTY, MO
Sheet 13 of 23

NODAWAY COUNTY BRO-B074(62)
SNYDER & ASSOCIATES ENGINEERS & PLANNERS, INC.

S

Project No: 1210363
Sheet 13 of 23