



July 14, 2021

ADDENDUM # 1
Systemic Safety Project
PROJECT NUMBER
BID # 4538

ATTENTION ALL PLAN HOLDERS:

The City of St. Charles is issuing this Addendum to the Systemic Safety Project Bid Documents. The purpose of the addendum are to separate out pavement repair work in the bid form, removed and added language in the Job Special Provisions (JSPs), added Crosswalk Illuminator and pilot light call out on detail sheet, and removed call outs on plan sheets. These modification affects the BID FORM, JSP-4.5, JSP-14.2, JSP-15.1, JSP-16.2.0.4, JSP-30.4, Detail Sheet, Quantity Sheet, and Plan Sheets 34 & 35. The revised bid information is as follows:

1. On the BID FORM, the pavement repair work that is scheduled to be performed at Elm St and Duchesne Dr has been broken out into separate quantities under the non-participating column. Original quantities have been reduced accordingly.
2. In JSP-4.5, APS buttons were removed and replaced with standard pushbuttons.
3. In JSP-14.2, language was added to call out the stop sign dimensions to be 36"x36".
4. In JSP-15.1, language was added regarding the pilot light.
5. In JSP-16.2.0.4, all language was removed in relation to the Software Programmable.
6. In JSP-30.4, language was added that payment for the pavement repair work items are included in the "Non-Participating Items".
7. On the Plan Sheet #3 (detail sheet), a crosswalk illuminator detail and a call out for pilot light was added.
8. On the Plan Sheet #4 (summary of quantities), quantities were added under the column called Non-Participating Items as the following: Removal of Improvements – Pavement Repair Work, Concrete Pavement (8 in non-reinf) – Pavement Repair Work, and Epoxy Coated Tie Bars (drilled and installed) – Pavement Repair Work. Original quantities were reduced accordingly.



9. On Plan Sheet #34, all call outs stating Wireless Radio Unit were removed.

10. On Plan Sheet #35, all call outs stating Wireless Radio Unit were removed.

Please adjust your bid accordingly.

CONTRACTOR'S SIGNATURE

DATE

Printed Name

Company Name

**A COPY OF THIS NOTICE SHALL BE STAPLED TO THE BID
PROPOSAL AND MUST BE SIGNED ACKNOWLEDGING RECEIPT**

Addendum #1

PROJECT BID FORM
St. Charles Systemic Safety Improvements
St. Charles County
STP-7302(671)

ITEM NUM.	ITEM DESCRIPTION	UNIT	Quantity	Unit Cost	Costs
ROADWAY ITEMS					
202-20.10	REMOVAL OF IMPROVEMENTS	LS	1		
202-99.01a *	ADJUST TO GRADE OF IMPROVEMENTS	LS	1		
202-99.01b *	RELOCATION OF IMPROVEMENTS	LS	1		
304-05.04	TYPE 5 AGGREGATE FOR BASE (4 IN. THICK)	SQYD	716		
*401-99.05a	BITUMINOUS PAVEMENT MIXTURE PG64-22 (BP-1) (2 IN. THICK)	SQYD	292		
502-11.08	CONCRETE PAVEMENT (8 IN. NON-REINF)	SQYD	292		
609-20.12	INTEGRAL CURB (6 IN. HEIGHT AND UNDER) TYPE B	LF	654		
616-99.01a *	TRAFFIC CONTROL	LS	1		
616-99.01b *	MAINTENANCE OF TRAFFIC CONTROL ITEMS	LS	1		
616-99.03	CAST IN PLACE RETAINING WALL	LF	26		
618-10.00	MOBILIZATION	LS	1		
627-40.00	CONTRACTOR FURNISHED SURVEYING AND STAKING	LS	1		
710-10.10	EPOXY COATED TIE BARS (DRILLED AND INSTALLED)	LBS	100		
803-10.00	TURF TYPE TALL FESCUE SODDING	SQYD	281		
806-10.19	SILT FENCE	LF	259		
806-10.25	INLET CHECK	EA	9		
ROADWAY ITEMS SUB-TOTAL =					
DRAINAGE ITEMS					
726-30.12	12 IN. NON-REINFORCED CONCRETE SEWER PIPE	LF	23		
731-00.48	PRECAST CONCRETE MANHOLE - 48 IN.	LF	3		
731-99.02a*	EX INLET/MANHOLE (ADJUST TO GRADE)	EA	1		
731-99.02b*	CURB INLET W/ GRATE OPENING	EA	1		
DRAINAGE ITEMS SUB-TOTAL =					
PEDESTRIAN ITEMS					
608-10.10	CONCRETE CURB RAMP	SQYD	167		
608-10.12	TRUNCATED DOMES	SQFT	205		
608-99.05a*	BRICK PAVERS	SQYD	34		
608-99.05b*	CONCRETE, 4 IN. (STAMPED & COLORED)	SQYD	72		
608-60.04	CONCRETE SIDEWALK, 4 IN.	SQYD	105		
PEDESTRIAN ITEMS SUB-TOTAL =					

PROJECT BID FORM
St. Charles Systemic Safety Improvements
St. Charles County
STP-7302(671)

SIGNING ITEMS					
606-66.40	GUARDRAIL DELINEATOR, WHITE	EA	67		
616-10.05	CONSTRUCTION SIGNS	SQFT	192		
903.10.10	CONCRETE FOOTINGS, EMBEDDED	CUYD	4.2		
903-12.20	PIPE POST	LB	2980		
903-12.40	BREAKAWAY ASSEMBLY	EA	32		
903-12.70A	2 IN. PERFORATED SQUARE STEEL TUBE POST	LF	36		
903-50.04A	SH-FLAT SHEET	SQFT	797.5		
903-99.02a *	RELOCATE SIGNS	EA	14		
903-99.02b *	R1-1 "STOP" WITH LED FLASHERS	EA	3		
903-99.02c *	REFLECTIVE POST STRIP	EA	268		
903-99.02d*	DECORATIVE SIGN POST	EA	6		
903-99.02e*	RELOCATE EXISTING DECORATIVE SIGN POST AND SIGNS	EA	5		
903-99.02f*	18" FLEXIBLE DELINEATORS	EA	12		
SIGNING ITEMS SUB-TOTAL =					
STRIPING ITEMS					
620-00.15	PREFORMED THERMOPLASTIC PAVEMENT MARKING, 24 IN, WHITE	LF	1112		
620-00.21	PREFORMED THERMOPLASTIC PAVEMENT MARKING, LEFT/RIGHT ARROW	EA	6		
620-00.30	PREFORMED THERMOPLASTIC PAVEMENT MARKING, WORD (ONLY)	EA	4		
620-60.01B	4 IN. YELLOW ACRYLIC WATERBORNE PAVEMENT MARKING PAINT	LF	5756		
620-61.06	ACRYLIC WATERBORNE PAVEMENT MARKING PAINT, 6 IN, WHITE	LF	19418		
620-61.22	ACRYLIC WATERBORNE PAVEMENT MARKING PAINT, 12 IN, WHITE	LF	5675		
620-61.30	ACRYLIC WATERBORNE PAVEMENT MARKING PAINT, 30 IN, WHITE	LF	400		
620-99.02a *	PREFORMED THERMOPLASTIC PAVEMENT MARKING, WORD (STOP AHEAD)	EA	14		
620-99.03a *	PREFORMED THERMOPLASTIC PAVEMENT MARKING, 6 IN, DASHED YELLOW	LF	30		
620-99.03b *	PREFORMED THERMOPLASTIC PAVEMENT MARKING, 12 IN, YELLOW	LF	8		
STRIPING ITEMS SUB-TOTAL =					

PROJECT BID FORM
St. Charles Systemic Safety Improvements
St. Charles County
STP-7302(671)

ELECTRICAL ITEMS					
901-10.30	LIGHT POLE, 30 FT, TYPE AT, POWDER COATED BLACK	EA	1		
901-11.12	BRACKET ARM, 12 FT, POWDER COATED BLACK	EA	1		
901-13.11	LUMINAIRE, LED-A, TYPE 3, 120 V, POWDER COATED BLACK	EA	1		
901-30.02	2" CONDUIT, DIRECTIONAL BORE (LIGHTING)	LF	86		
901-61.10	PULLBOX, PREFORMED CLASS 1 (LIGHTING)	EA	1		
901-70.08	CABLE, 8 AWG, 1 CONDUCTOR	LF	240		
901-71.10	CABLE, 10 AWG 1 CONDUCTOR, POLE & BRACKET	LF	90		
901-72.08	WIRE, 8 AWG, 1 BARE NEUTRAL	LF	120		
901-82.30	POLE FOUNDATION (30 FT. MOUNTING HEIGHT)	EA	1		
901-99.02a*	DRILL EXISTING PULLBOX	EA	1		
901-99.02b*	LIGHT POLE CONNECTION	EA	1		
902-52.00	2" CONDUIT, DIRECTIONAL BORE (SIGNAL)	LF	1822		
902-72.00	2" CONDUIT, PUSHED	LF	190		
902-82.02	CABLE, 2 AWG, 1 CONDUCTOR, POWER	LF	300		
902-82.19	CABLE, 12 AWG, 1 CONDUCTOR, POWER	LF	6660		
902-86.20	POWER SUPPLY, TYPE 2, INCLUDING FOUNDATION	EA	2		
902-88.10	PULLBOX, PREFORMED CLASS 1 (SIGNAL)	EA	8		
902-99.02a*	INTERSECTION WARNING SYSTEM	EA	2		
902-99.02b*	RRFB SYSTEM - SCHOOL CROSSING	EA	1		
902-99.02c*	RRFB SYSTEM - PEDESTRIAN CROSSING	EA	1		
902-99.02d*	SPEED LIMIT FEEDBACK SYSTEM	EA	2		
902-99.02e*	RETRO-REFLECTIVE BACKPLATE	EA	45		
ELECTRICAL ITEMS SUB-TOTAL =					
NON-PARTICIPATING ITEMS					
202-20.10	REMOVAL OF IMPROVEMENTS - PAVEMENT REPAIR WORK	LS	1		
502-11.08	CONCRETE PAVEMENT (8 IN. NON-REINF) - PAVEMENT REPAIR WORK	SQYD	195		
710-10.10	EPOXY COATED TIE BARS (DRILLED AND INSTALLED) - PAVEMENT REPAIR WORK	LBS	50		
NON-PARTICIPATING ITEMS SUB-TOTAL =					
PROJECT COSTS TOTAL =					

Addendum #1

engineer. Documentation must be provided about the location of any non-complaint items that are allowed to remain at the end of the construction project. Specific details of the non-complaint items, the ADA requirement that the work was not able to comply with, and the specific reasons that justify the exception are to be included with the completed ADA Checklist provided to the engineer.

4.1 Slope and grade measurements shall be made using a properly calibrated, 2 foot long, electronic digital level approved by the engineer.

5.0 Basis of Payment. The contractor will receive full pay of the contract unit cost for all sidewalk, ramp, curb ramp, median, island, approach work, cross walk striping, standard pushbuttons, pedestrian heads, detectible warning systems and temporary traffic control measures that are completed during the current estimate period as approved by the engineer. Based upon completion of the ADA Checklist, the contractor shall complete any necessary adjustments to items deemed non-compliant as directed by the engineer.

Addendum #1

5.1 No direct payment will be made to the contractor to recover the cost of equipment, labor, materials, or time required to fulfill the above provisions, unless specified elsewhere in the contract documents.

END OF JOB SPECIAL PROVISION 4

JSP – 5 SUPPLEMENTAL REVISIONS JSP-18-01Q

Compliance with [2 CFR 200.216 – Prohibition on Certain Telecommunications and Video Surveillance Services or Equipment](#).

The Missouri Highways and Transportation Commission shall not enter into a contract (or extend or renew a contract) using federal funds to procure or obtain equipment, services, or systems that uses covered telecommunications equipment or services as substantial or as critical technology as part of any system where the video surveillance and telecommunications equipment was produced by Huawei Technologies Company, ZTE Corporation, Hytera Communications Corporation, Hangzhou Hikvision Digital Technology Company, or Dahua Technology Company (or any subsidiary or affiliate of such entities).

Stormwater Compliance Requirements

1.0 Description. This provision requires the contractor to provide a Water Pollution Control Manager (WPCM) for any project that includes land disturbance on the project site and the total area of land disturbance, both on the project site, and all Off-site support areas, is one (1) acre or more. Regardless of the area of Off-site disturbance, if no land disturbance occurs on the project site, these provisions do not apply. When a WPCM is required, all sections within this provision shall be applicable, including assessment of specified Liquidated Damages for failure to correct Stormwater Deficiencies, as specified herein. This provision is in addition to any other

3.0 Basis of Payment. This work shall be paid for at the contract unit price for Item Number 608-99.05b, "CONCRETE, 4 IN. (STAMPED & COLORED)", per SQ YDS.

END OF JOB SPECIAL PROVISION 12

JSP – 13 RELOCATE EXISTING SIGN

1.0 Description. This work shall consist of relocating existing sign panels, as shown in the roadway plans. The existing sign panel shall be removed and stored within the project limits until such time as it shall be reinstalled. Any damage to the sign panel shall be repaired to the satisfaction of the engineer and/or City or replaced in kind at the cost of the Contractor. The reinstallation shall comply with section 903 of the Missouri Standard Specification Book for Highway Construction, 2016 Edition. The relocated sign is to be installed on a new post (breakaway or wooden) per pay item 903-12.40 and 903-12.60. Existing sign post is to be removed as well as any associated foundation.

2.0 Basis of Payment. This work shall be paid for at the contract unit price for Item Number 903-99.02a, "RELOCATE EXISTING SIGN", per EACH.

END OF JOB SPECIAL PROVISION JSP-13

JSP – 14 R1-1 "STOP" WITH LED FLASHERS

1.0 Description. This work shall consist of furnishing and installing a solar powered light emitting diode (LED) embedded stop sign, of the size specified in the plan, consisting of embedded LED lights, and solar panels and batteries for each sign. This solar LED embedded stop sign function is to warn motorists of stop condition to flash sequentially. The post, hardware, and cabinet shall be powder coated black.

2.0 Materials. The signs shall meet specifications outlined in the MUTCD and the reflective sheeting on stop sign shall meet AASHTO Type D or ASTM Type XI sheeting with anti-graffiti overlay. The sign shall be 36"x36". The embedded LED lights shall provide high powered 1 W LEDs wired in a manner that all LEDs continue to flash in the event of failure of an individual LED. Signs must output 550 candelas at daytime peak ensuring sign is daylight visible. The provided LEDs shall have dimming capabilities and automatically adjust flash brightness to varying light conditions. Solar panels and batteries sized to allow system to work as needed 24 hr. per day based on the 20 yr. projected traffic count of the location shall be provided and installed. The system must be provided with solar panels by the manufacturer. Batteries must be provided by the manufacturer and should be installed in a box mounted on a pole underneath the solar panel.

Addendum #1

2.0 Basis of Payment. This work shall be paid for at the contract unit price for Item Number 903-99.02b, "R1-1 "STOP" WITH LED FLASHERS", per EACH and shall include the cost of all materials to provide a fully functional R1-1 Stop with LED Flashers. Everything necessary to power and operate the sign, including, but not limited to a solar panel, battery, signage, internal cabling, and LED lights. The post will be paid for separately under the contract unit pay item of "Decorative Sign Post".

END OF JOB SPECIAL PROVISION JSP-14

JSP – 15 RETANGULAR RAPID FLASHING BEACON

1.0 Description. Pedestrian warning beacons shall be installed. Beacons shall be a Rectangular Rapid Flash Beacons (RRFB) and meet the 2/4-1 pattern required by FHWA as well as comply with Section 4L.03 (Warning Beacon) of the MUTCD. These units shall be solar powered (battery lifespan: 3-5 years), self-contained units, with crosswalk illuminators, pushbutton activated which communicate via wireless interconnect to flash simultaneously upon depression of either pushbutton. The pushbuttons shall include audible features. A small pilot light may be installed integral to the RRFB or pedestrian pushbutton detector to give confirmation that the RRFB is in operation. The crosswalk illuminators shall be activated upon push button depression. The units shall have software programming via internet access for the City's use. The cabinet should be powder coated black to match the poles and mounting of the cabinet to be determined and approved by the City prior to installation.

2.0 Detail. See plan for details

Addendum #1

3.0 Basis of Payment This work shall be paid for at the contract unit price for Item Number 902-99.02b RRFB SYSTEM – SCHOOL CROSSING & 902-99.03c RRFB SYSTEM – PEDESTRIAN CROSSING, per EACH. These pay items shall include the cost of all materials to provide a fully functional actuated RRFB beacon signal. All components necessary for power and communication to operate the warning beacon, including, but not limited to a solar panel and controller, network controller, storage batteries, pedestrian actuation, crosswalk illuminator, ADA compliant audible pedestrian pushbutton, signage, internal cabling and flashing beacons. The poles and foundations will be included in this item, with MoDOT Type C post and Type C foundation or manufacturer's recommended equivalent. The poles, cabinets and all related equipment and hardware shall be powder coated black.

END OF JOB SPECIAL PROVISION 15

JSP – 16 SPEED LIMIT FEEDBACK SYSTEM

1.0 Description. This work shall include furnishing and installation a Driver Feedback Speed Sign. The Driver Feedback Speed Sign (DFSS) is a dynamic numeric sign that gives motorists real time feedback as to their vehicle's speed via radar speed detection. The post, hardware and cabinet shall be powder coated black.

2.0. Materials.

2.0.1 Display

- a. Provide displays that utilize Prismatic Fluorescent Reflective Sheeting and 4 high output InGaAlP LEDs per pixel.
- b. Provide LEDs that have 1.4 candela luminous intensity and 22 degrees viewing

- f. Furnish cabinets with face dimensions that are 36 in. wide x 48 in. high.
- g. Provide cabinets that house the display, radar gun (K-band one-way) power supply and controller in a sealed, weather-tight environment.

2.0.4 Controller

- a. Furnish controllers that are capable of taking radar generated speed input and displaying it on the sign.
- b. Provide controllers that are capable of having either one of two options:
 - 1. Local Control. The local control will be a lockable, vandal resistant switch to allow for on/off toggle control of the sign at the sign location or shall be hardwired dry contact, allowing the sign to be turned on and off from an existing switching source.

Addendum #1

3.0 Construction. Install DFSS units as shown on the plans and manufacture, and to the satisfaction of the Engineer and City.

4.0 Basis of Payment This work shall be paid for at the contract unit price for Item Number 902-99.02d "SPEED LIMIT FEEDBACK SYSTEM", per EACH, and shall include the cost of all materials to provide and fully functional DFSS. Everything necessary to power and operate the feedback sign, including, but not limited to a solar panel and controller, network controller, storage batteries, signage and internal cabling. The poles and foundations will be included in this item, with MoDOT Type C post and Type C foundation or manufacturer's recommended equivalent. The poles, cabinets and all related equipment and hardware shall be powder coated black. This price, will be full compensation for furnishing, placing and testing all materials and equipment, and for all tools, labor, equipment, hardware, operational software package(s), supplies, support, personnel training, shop drawings, documentation and incidentals necessary to complete the work.

END OF JOB SPECIAL PROVISION 16

JSP – 17 REFLECTIVE POST STRIP

1.0 Description. This work shall consist of furnishing and installing reflective post strips on existing or proposed sign posts and other objects in the field.

2.0 Materials. The reflective post strips shall be 0.040 aluminum panels with retroreflective sign sheeting materials and stainless-steel attachment hardware for the installation. Retroreflective strips must be 2 inches in width and a height of 5 feet. Match the color of the retroreflective sheeting to the background color of the sign except for YIELD signs and DO NOT ENTER signs, where the color must be red.

3.0 Basis of Payment. This work shall be paid for at the contract unit price for Item Number, 902-99.02c "REFLECTIVE POST STRIP" per EACH.

END OF JOB SPECIAL PROVISION 17

JSP – 30
PAVEMENT REPAIR WORK

1.0 Description. Pavement repair work shall be completed at Elm and Duchesne using weekday nighttime closures and high early strength concrete.

2.0 Work Hour Restrictions. The pavement repair work shall be completed at night, on weekdays, between 8pm and 6am.

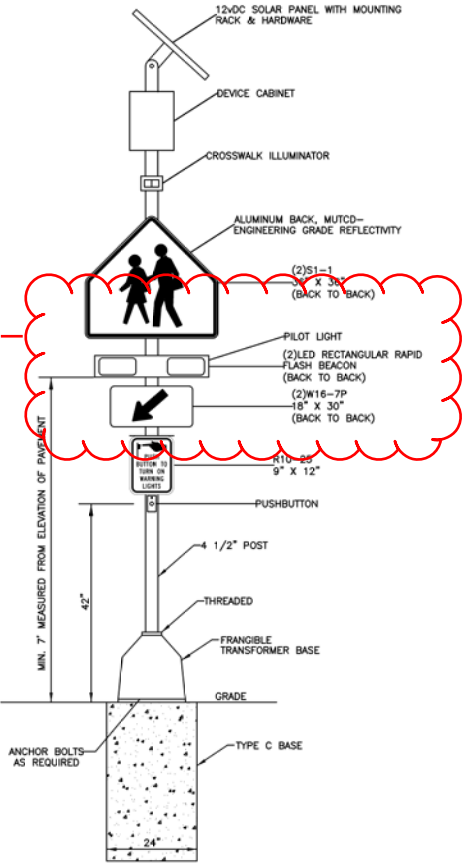
3.0 Detours and Lane Closures. At least one lane of traffic in each direction shall be maintained during daytime hours, 6am to 8pm. Full closures may be used at night, between 8pm and 6am.

4.0 Basis of Payment. Payment for the detours and lane closures will be included in the 616-99.01a TRAFFIC CONTROL pay item and no additional compensation will be provided. Payment for the pavement repair work items is included in the “Non-Participating Items” section.

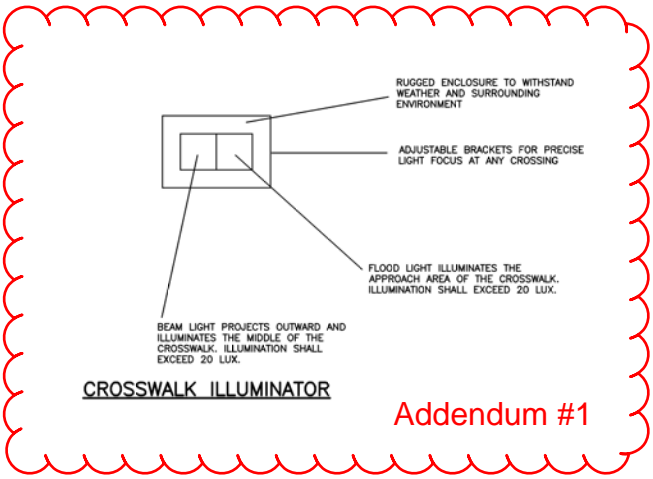
Addendum #1

END OF JOB SPECIAL PROVISION 30

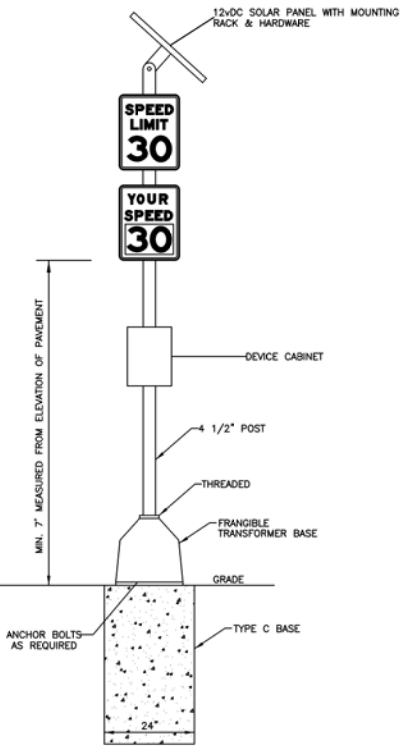
Addendum #1



SCHOOL CROSSING – RECTANGULAR RAPID FLASH BEACON (RRFB) PEDESTRIAN WARNING SIGNAL ASSEMBLY DETAIL (N.T.S.)

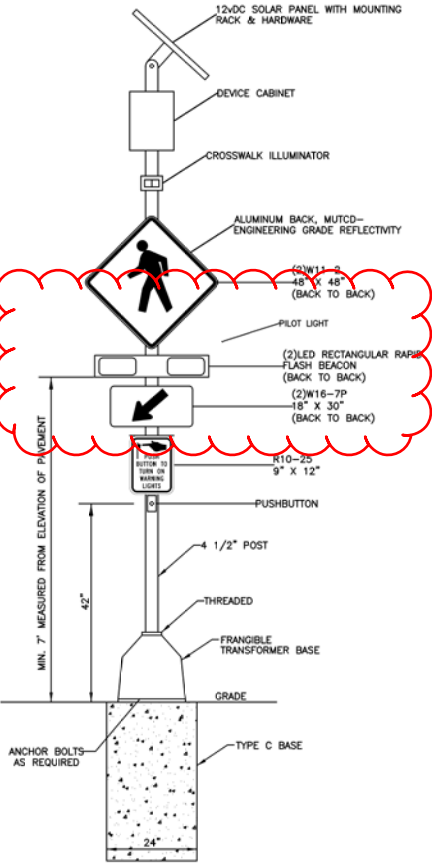


Addendum #1

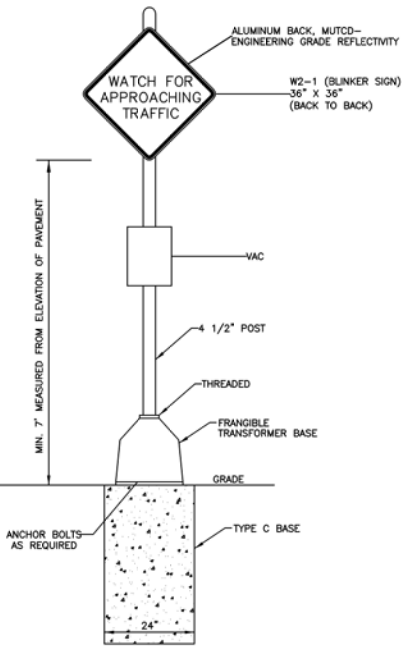


SPEED LIMIT FEEDBACK SIGN DETAIL (N.T.S.)

Addendum #1



PEDESTRIAN CROSSING – RECTANGULAR RAPID FLASH BEACON (RRFB) PEDESTRIAN WARNING SIGNAL ASSEMBLY DETAIL (N.T.S.)



INTERSECTION CONFLICT WARNING SYSTEM ASSEMBLY DETAIL (N.T.S.)

Corporate Engineering
Certificate # 000381

PAIGE S. MARTZ
NUMBER
PE-2020024181

CIVIL ENGINEER

DATE PREPARED
4/1/21

ROUTE
SL

STATE
MO

DISTRICT
3

COUNTY
ST. CHARLES

JOB NO.
5-19

CONTRACT ID.

PROJECT NO.

BRIDGE NO.

DESCRIPTION	DATE
MODOT PRELIMINARY APPROVAL	12/23/19
MODOT FINAL APPROVAL	6/11/21
ADDENDUM 1	7/14/21

TRANSPORTATION
ENGINEERS+PLANNERS

12400 OLIVE BLVD, SUITE 430
ST. LOUIS, MO 63141
(314) 878-8644
340 REGENCY CENTRE
COLLINGSVILLE, IL 62294
(618) 391-1113
www.gebtraffic.com

GENERAL NOTES

ST. CHARLES SYSTEMIC SAFETY
CITY OF ST. CHARLES, MISSOURI

CITY PROJECT #18STR29
STP-7302(671)

IF A SEAL IS PRESENT ON THIS SHEET IT HAS BEEN ELECTRONICALLY SEALED AND DATED.

Addendum #1

SUMMARY OF QUANTITIES			
ITEM NUM.	ITEM DESCRIPTION	UNIT	Total Quantity
ROADWAY ITEMS			
202-20.10	REMOVAL OF IMPROVEMENTS	LS	1
202-99.01a *	ADJUST TO GRADE OF IMPROVEMENTS	LS	1
202-99.01b *	RELOCATION OF IMPROVEMENTS	LS	1
304-05.04	TYPE 5 AGGREGATE FOR BASE (4 IN. THICK)	SQYD	716
*401-99.05a	BITUMINOUS PAVEMENT MIXTURE PG64-22 (BP-1) (2 IN. THICK)	SQYD	292
502-11.08	CONCRETE PAVEMENT (8 IN. NON-REINF)	SQYD	292
609-20.12	INTEGRAL CURB (6 IN. HEIGHT AND UNDER) TYPE B	LF	654
616-99.01a *	TRAFFIC CONTROL	LS	1
616-99.01b *	MAINTENANCE OF TRAFFIC CONTROL ITEMS	LS	1
618-99.03	CAST IN PLACE RETAINING WALL	LF	26
618-10.00	MOBILIZATION	LS	1
627-40.00	CONTRACTOR FURNISHED SURVEYING AND STAKING	LS	1
710-10.10	EPOXY COATED TIE BARS (DRILLED AND INSTALLED)	LBS	100
803-10.00	TURF TYPE TALL FESCUE SODDING	SQYD	281
806-10.19	SILT FENCE	LF	259
806-10.25	INLET CHECK	EA	9
DRAINAGE ITEMS			
726-30.12	12 IN. NON-REINFORCED CONCRETE SEWER PIPE	LF	23
731-00.48	PRECAST CONCRETE MANHOLE - 48 IN.	LF	3
731-99.02a*	EX INLET/MANHOLE (ADJUST TO GRADE)	EA	1
731-99.02b*	CURB INLET W/ GRATE OPENING	EA	1
PEDESTRIAN ITEMS			
608-10.10	CONCRETE CURB RAMP	SQYD	167
608-10.12	TRUNCATED DOMES	SQFT	205
608-99.05a*	BRICK PAVERS	SQYD	34
608-99.05b*	CONCRETE, 4 IN. (STAMPED & COLORED)	SQYD	72
608-60.04	CONCRETE SIDEWALK, 4 IN.	SQYD	105
SIGNING ITEMS			
606-66.40	GUARDRAIL DELINEATOR, WHITE	EA	67
618-10.05	CONSTRUCTION SIGNS	SQFT	192
903.10.10	CONCRETE FOOTINGS, EMBEDDED	CUYD	4.2
903-12.20	PIPE POST	LB	2980
903-12.40	BREAKAWAY ASSEMBLY	EA	32
903-12.70A	2 IN. PERFORATED SQUARE STEEL TUBE POST	LF	36
903-50.04A	SH-FLAT SHEET	SQFT	797.5
903-99.02a *	RELOCATE SIGNS	EA	14
903-99.02b *	R1-1 "STOP" WITH LED FLASHERS	EA	3
903-99.02c *	REFLECTIVE POST STRIP	EA	268
903-99.02d*	DECORATIVE SIGN POST	EA	6
903-99.02e*	RELOCATE EXISTING DECORATIVE SIGN POST AND SIGNS	EA	5
903-99.02f*	18" FLEXIBLE DELINEATORS	EA	12

SUMMARY OF QUANTITIES			
ITEM NUM.	ITEM DESCRIPTION	UNIT	Total Quantity
STRIPING ITEMS			
620-00.15	PREFORMED THERMOPLASTIC PAVEMENT MARKING, 24 IN. WHITE	LF	1112
620-00.21	PREFORMED THERMOPLASTIC PAVEMENT MARKING, LEFT/RIGHT ARROW	EA	6
620-00.30	PREFORMED THERMOPLASTIC PAVEMENT MARKING, WORD (ONLY)	EA	4
620-60.01B	4 IN. YELLOW ACRYLIC WATERBORNE PAVEMENT MARKING PAINT	LF	5756
620-61.06	ACRYLIC WATERBORNE PAVEMENT MARKING PAINT, 6 IN. WHITE	LF	19418
620-61.22	ACRYLIC WATERBORNE PAVEMENT MARKING PAINT, 12 IN. WHITE	LF	5675
620-61.30	ACRYLIC WATERBORNE PAVEMENT MARKING PAINT, 30 IN. WHITE	LF	400
620-99.02a *	PREFORMED THERMOPLASTIC PAVEMENT MARKING, WORD (STOP AHEAD)	EA	14
620-99.03a *	PREFORMED THERMOPLASTIC PAVEMENT MARKING, 6 IN. DASHED YELLOW	LF	30
620-99.03b *	PREFORMED THERMOPLASTIC PAVEMENT MARKING, 12 IN. YELLOW	LF	8
ELECTRICAL ITEMS			
901-10.30	LIGHT POLE, 30 FT. TYPE AT, POWDER COATED BLACK	EA	1
901-11.12	BRACKET ARM, 12 FT, POWDER COATED BLACK	EA	1
901-13.11	LUMINAIRE, LED-A, TYPE 3, 120 V, POWDER COATED BLACK	EA	1
901-30.02	2" CONDUIT, DIRECTIONAL BORE (LIGHTING)	LF	86
901-61.10	PULLBOX, PREFORMED CLASS 1 (LIGHTING)	EA	1
901-70.08	CABLE, 8 AWG, 1 CONDUCTOR	LF	240
901-71.10	CABLE, 10 AWG 1 CONDUCTOR, POLE & BRACKET	LF	90
901-72.08	WIRE, 8 AWG, 1 BARE NEUTRAL	LF	120
901-82.30	POLE FOUNDATION (30 FT. MOUNTING HEIGHT)	EA	1
901-99.02a*	DRILL EXISTING PULLBOX	EA	1
901-99.02b*	LIGHT POLE CONNECTION	EA	1
902-52.00	2" CONDUIT, DIRECTIONAL BORE (SIGNAL)	LF	1822
902-72.00	2" CONDUIT, PUSHED	LF	190
902-82.02	CABLE, 2 AWG, 1 CONDUCTOR, POWER	LF	300
902-82.19	CABLE, 12 AWG, 1 CONDUCTOR, POWER	LF	6660
902-86.20	POWER SUPPLY, TYPE 2, INCLUDING FOUNDATION	EA	2
902-88.10	PULLBOX, PREFORMED CLASS 1 (SIGNAL)	EA	8
902-99.02a*	INTERSECTION WARNING SYSTEM	EA	2
902-99.02b*	RRFB SYSTEM - SCHOOL CROSSING	EA	1
902-99.02c*	RRFB SYSTEM - PEDESTRIAN CROSSING	EA	1
902-99.02d*	SPEED LIMIT FEEDBACK SYSTEM	EA	2
902-99.02e*	RETRO-REFLECTIVE BACKPLATE	EA	45
NON-PARTICIPATING ITEMS			
202-20.10	REMOVAL OF IMPROVEMENTS - PAVEMENT REPAIR WORK	LS	1
502-11.08	CONCRETE PAVEMENT (8 IN. NON-REINF) - PAVEMENT REPAIR WORK	SQYD	195
710-10.10	EPOXY COATED TIE BARS (DRILLED AND INSTALLED) - PAVEMENT REPAIR WORK	LBS	50

Addendum #1

CITY PROJECT #18STR29
STP-7302(671)

SUMMARY OF
QUANTITIES

ST. CHARLES SYSTEMIC SAFETY
CITY OF ST. CHARLES, MISSOURI

TRANSPORTATION
ENGINEERS+PLANNERS

13409 OLIVE BLVD, SUITE 430
ST. LOUIS, MO 63141
(314) 878-8644

340 REGENCY CENTRE
COLLINGSVILLE, IL 62234
(618) 391-1113
www.cbbtraffic.com

GOBB

DATE	DESCRIPTION
12/23/19	MODOT PRELIMINARY APPROVAL
6/11/21	MODOT FINAL APPROVAL
7/14/21	ADDENDUM 1

Corporate Engineering
Certificate # 000381

STATE OF MISSOURI

PAIGE S. MARTZ
NUMBER
PE-2020024181

PROFESSIONAL ENGINEER

PAIGE MARTZ

CIVIL ENGINEER

DATE PREPARED
4/1/21

ROUTE
STATE
MO

DISTRICT
SL
SHEET NO.
4

COUNTY
ST. CHARLES

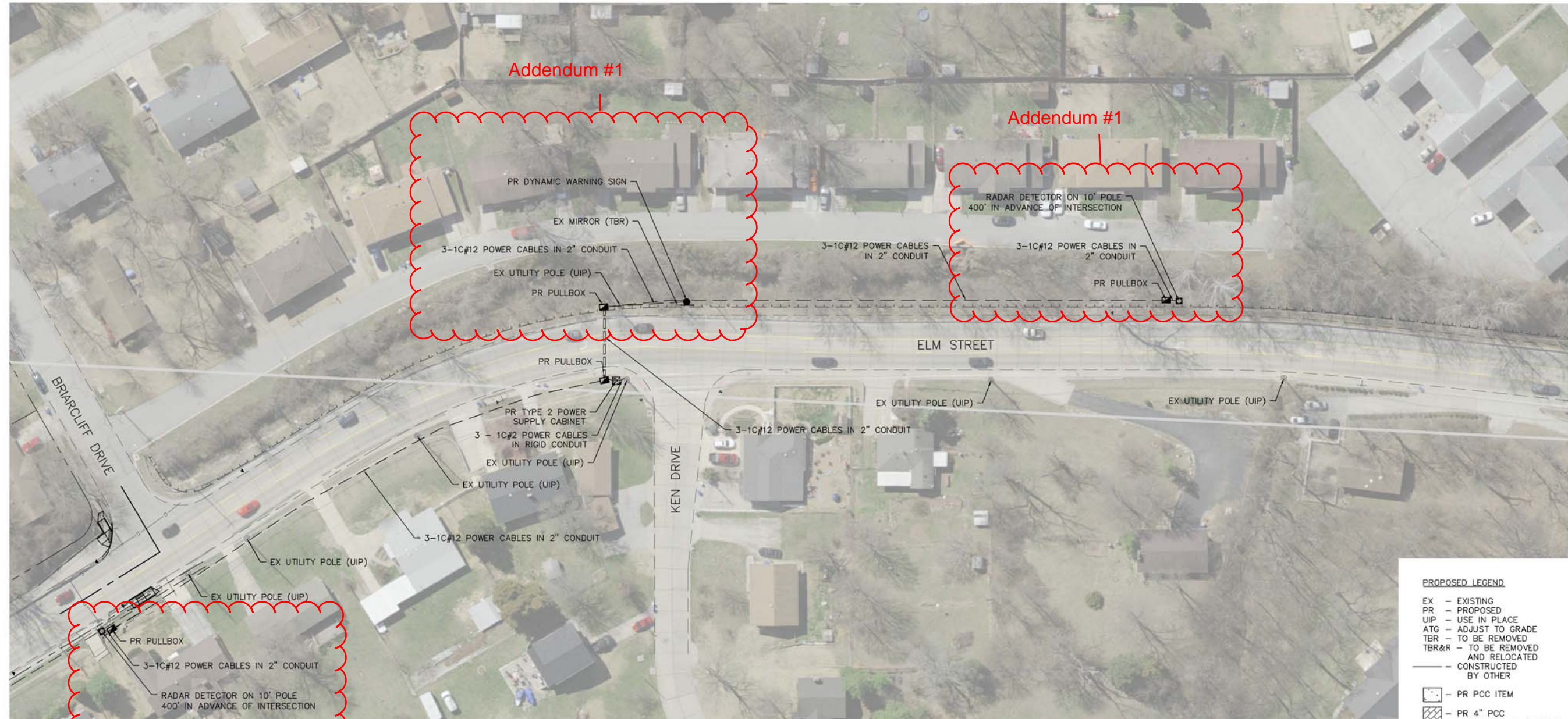
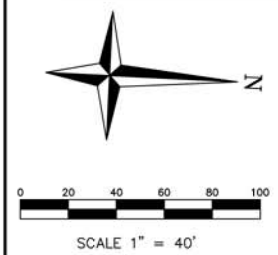
JOB NO.
5-19

CONTRACT ID.

PROJECT NO.

BRIDGE NO.

IF A SEAL IS PRESENT ON THIS SHEET IT HAS BEEN ELECTRONICALLY SEALED AND DATED.



- PROPOSED LEGEND**
- EX - EXISTING
 - PR - PROPOSED
 - UIP - USE IN PLACE
 - ATG - ADJUST TO GRADE
 - TBR - TO BE REMOVED
 - TBR&R - TO BE REMOVED AND RELOCATED
 - - CONSTRUCTED BY OTHER
 - PR PCC ITEM
 - PR 4" PCC STAMPED & COLORED
 - PR BRICK PAVER OVER 4" PCC
 - PR 8" PCC PAVEMENT W/ 2" BP-1
 - PREFORMED PULLBOX
 - TRENCHED CONDUIT
 - PUSHED CONDUIT
 - POWER SUPPLY

CITY PROJECT #18STR29
STP-7302(671)

Corporate Engineering
Certificate # 000381

PAIGE S. MARTZ
NUMBER
PE-2020024181
PROFESSIONAL ENGINEER
Paige Martz

CIVIL ENGINEER

DATE PREPARED
4/1/21

ROUTE
STATE
MO

DISTRICT
SL

SHEET NO.
34

COUNTY
ST. CHARLES

JOB NO.
5-19

CONTRACT ID.

PROJECT NO.

BRIDGE NO.

DATE	DESCRIPTION
12/23/19	MODOT PRELIMINARY APPROVAL
6/11/21	MODOT FINAL APPROVAL
7/14/21	ADDENDUM 1

**TRANSPORTATION
ENGINEERS+PLANNERS**

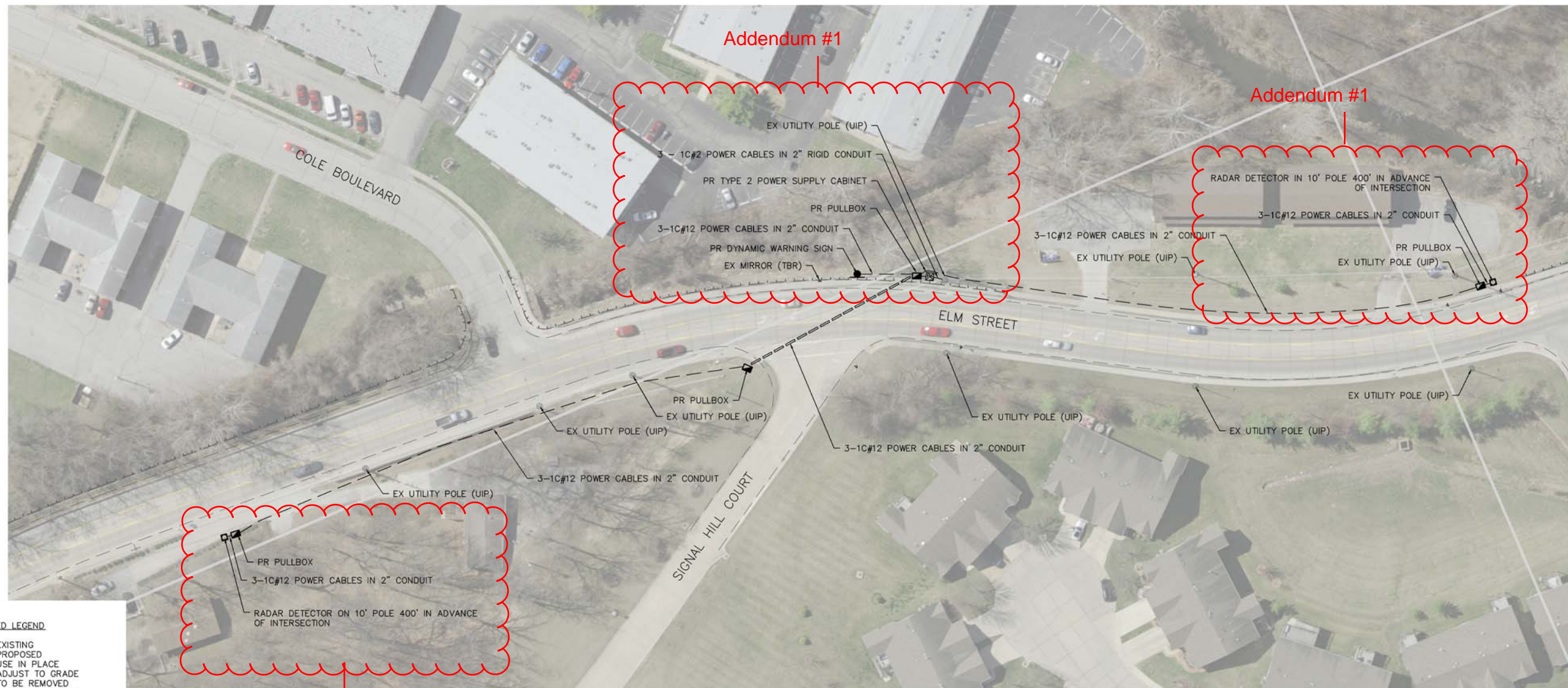
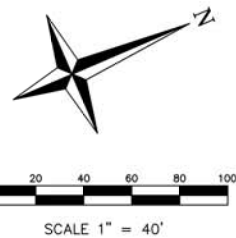
13409 OLIVE BLVD, SUITE 430
ST. LOUIS, MO 63141
(314) 878-8844

340 REGENCY CENTRE
COLLINGSVILLE, IL 62234
(618) 391-1113
www.gbbtraffic.com

**PLAN SHEET
ELM ST & KEN DR**

**ST. CHARLES SYSTEMIC SAFETY
CITY OF ST. CHARLES, MISSOURI**

IF A SEAL IS PRESENT ON THIS SHEET IT HAS BEEN ELECTRONICALLY SEALED AND DATED.



PROPOSED LEGEND

- EX - EXISTING
- PR - PROPOSED
- UIP - USE IN PLACE
- ATG - ADJUST TO GRADE
- TBR - TO BE REMOVED
- TBR&R - TO BE REMOVED AND RELOCATED
- - - - - CONSTRUCTED BY OTHER
- PR PCC ITEM
- PR 4" PCC STAMPED & COLORED
- PR BRICK PAVER OVER 4" PCC
- PR 8" PCC PAVEMENT W/ 2" BP-1
- PREFORMED PULLBOX
- TRENCHED CONDUIT
- PUSHED CONDUIT
- POWER SUPPLY

Addendum #1

CITY PROJECT #18STR29
STP-7302(671)

Corporate Engineering
Certificate # 000381

PAIGE S. MARTZ
NUMBER
PE-2020024181
PROFESSIONAL ENGINEER
Paige Martz

CIVIL ENGINEER

DATE PREPARED
4/1/21

ROUTE
STATE
MO

DISTRICT
SL

SHEET NO.
35

COUNTY
ST. CHARLES

JOB NO.
5-19

CONTRACT ID.

PROJECT NO.

BRIDGE NO.

DATE	DESCRIPTION
12/23/19	MODOT PRELIMINARY APPROVAL
6/11/21	MODOT FINAL APPROVAL
7/14/21	ADDENDUM 1

TRANSPORTATION
ENGINEERS+PLANNERS

13409 OLIVE BLVD, SUITE 430
ST. LOUIS, MO 63141
(314) 878-8644

340 REGENCY CENTRE
COLLINGSVILLE, IL 62234
(618) 391-1113
www.gebbrtraffic.com

PLAN SHEET
ELM ST & SIGNAL HILL CT

ST. CHARLES SYSTEMIC SAFETY
CITY OF ST. CHARLES, MISSOURI

IF A SEAL IS PRESENT ON THIS SHEET IT HAS BEEN ELECTRONICALLY SEALED AND DATED.