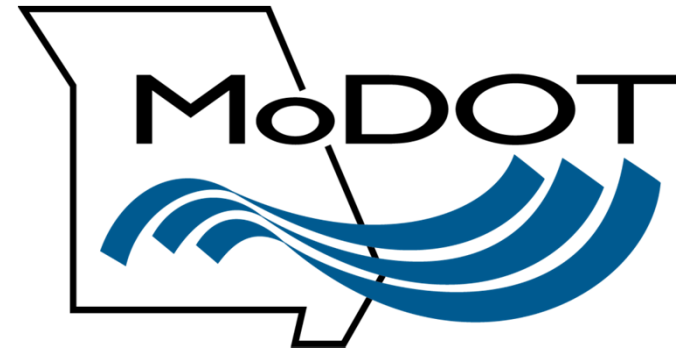


# U.S. 61/67 (Lindbergh) resurfacing: Swan to Route D (Page)

June 23, 2021





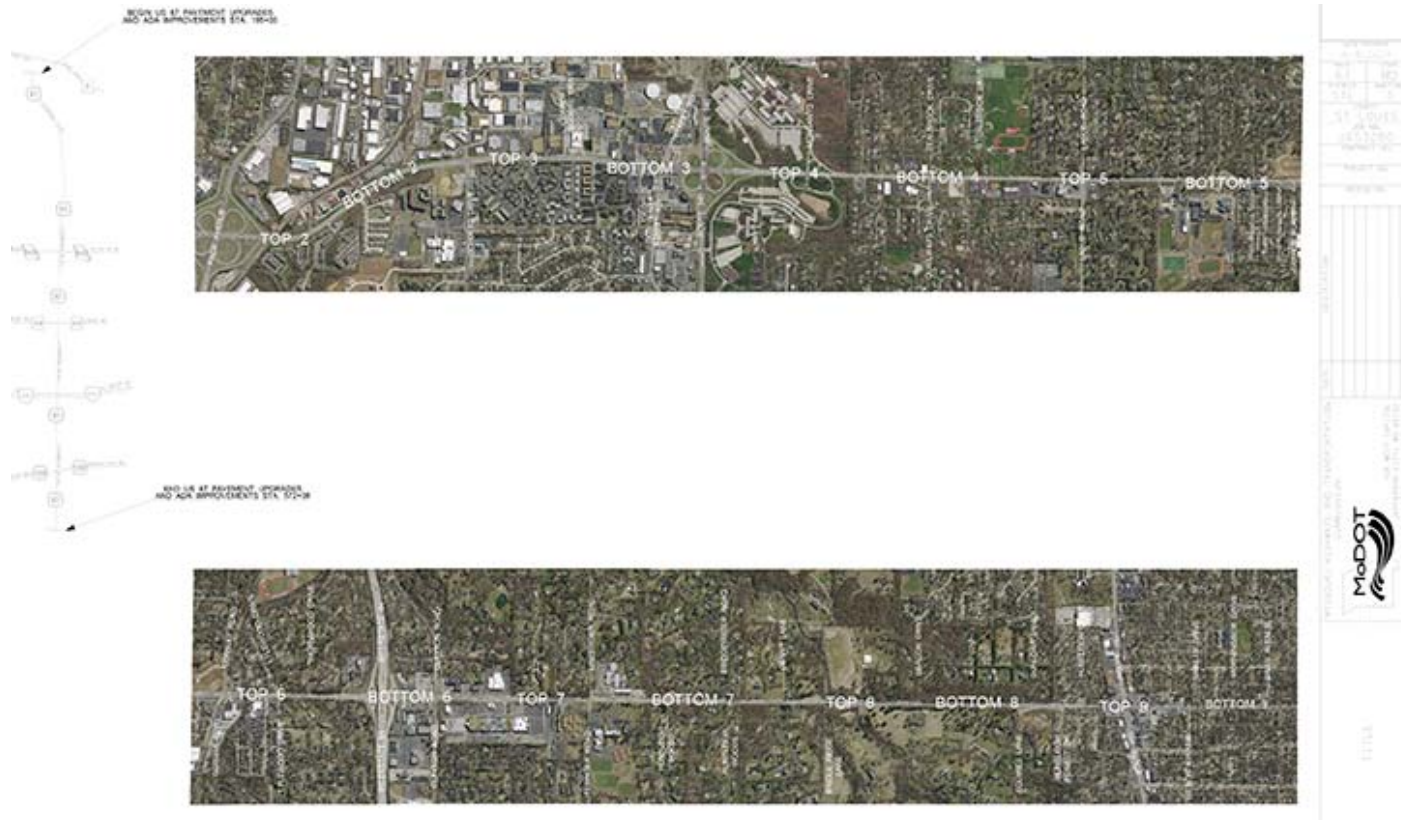
What is the purpose of this  
project? |

# Main Goal: Maintain system



- The Route 61/67 corridor between Swan and Page needs an updated driving surface to keep it safe and operational for the foreseeable future. The sidewalks and pedestrian signals need some updates to bring them up to Federal requirements.

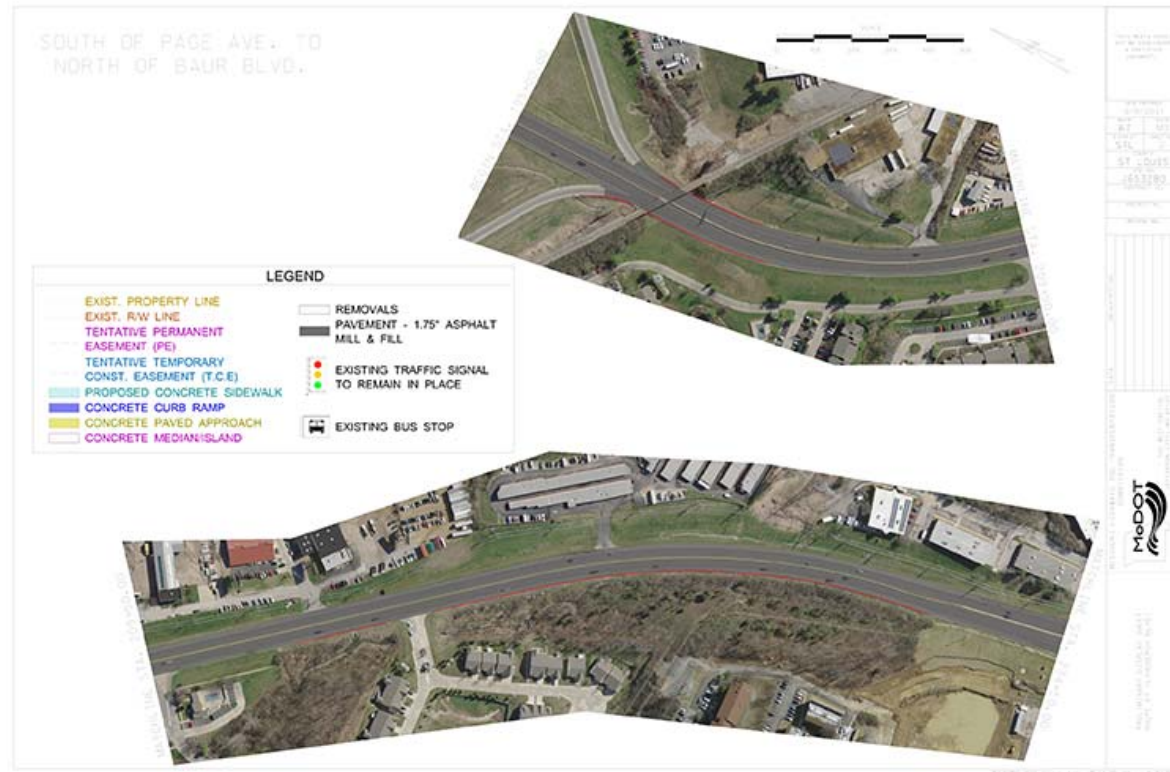
## Route 61/67 (Lindbergh) Swan to Route D (Page) overall



**If you have questions, please share them in Q&A**

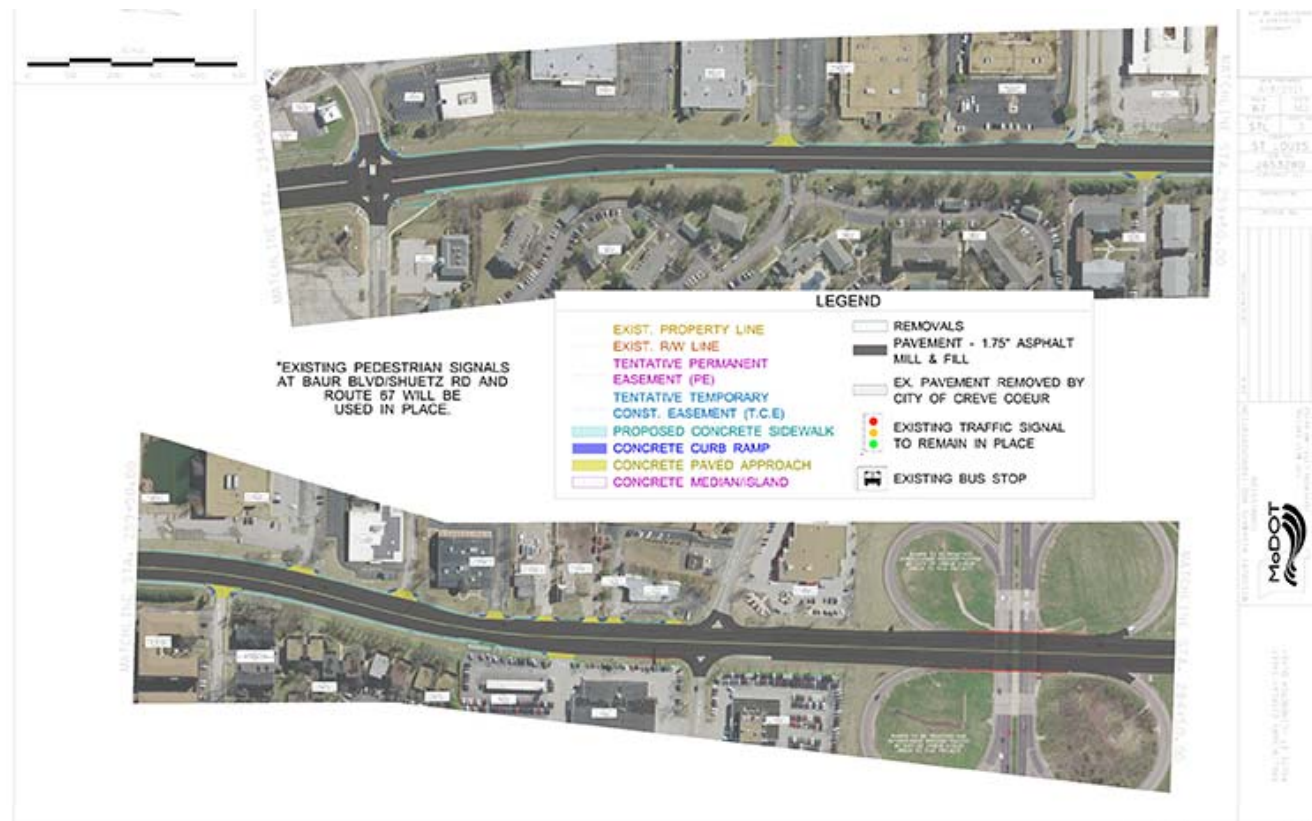


## Lindbergh: Page to North of Baur



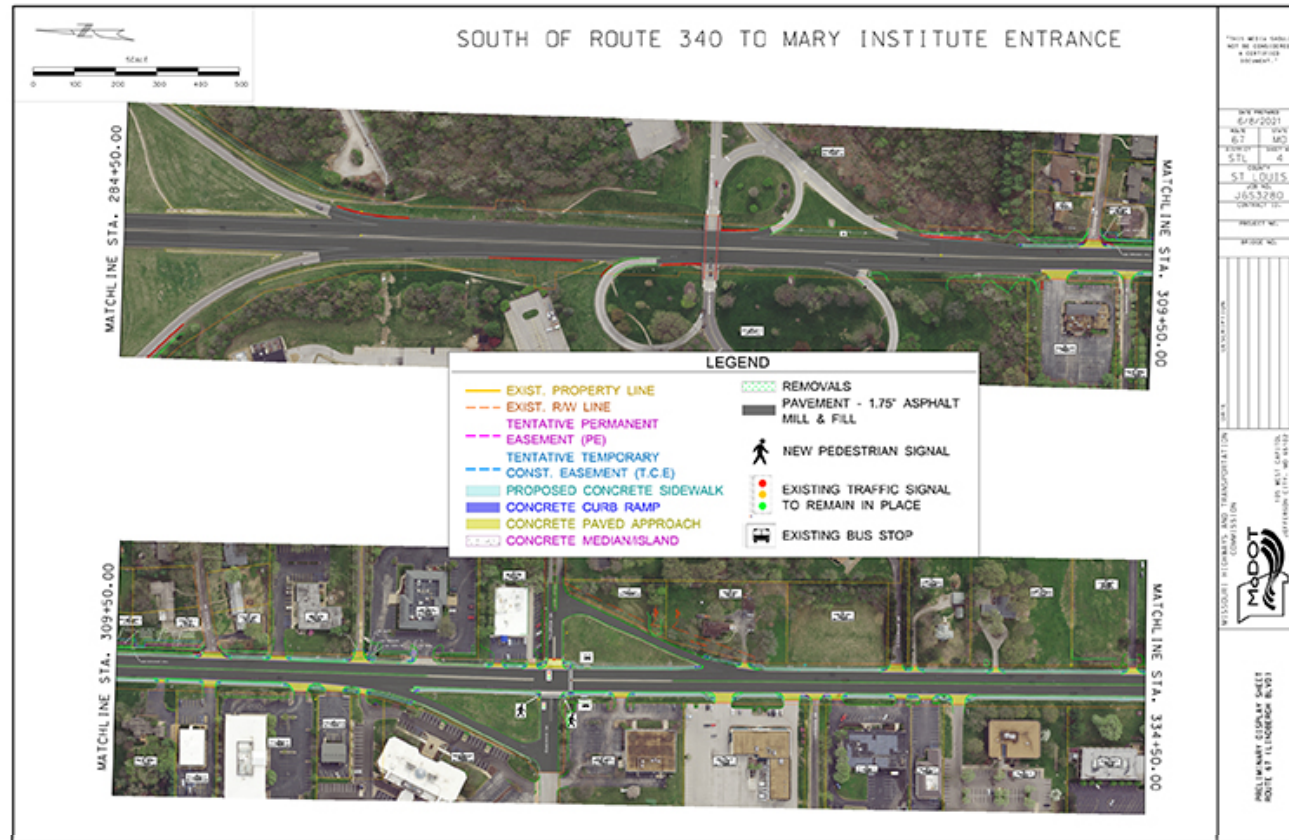
**If you have questions, please share them in Q&A**

## Lindbergh: Baur to south of Route 340



If you have questions, please share them in Q&A

# Lindbergh: south of Route 340 to Mary Institute Entrance



If you have questions, please share them in Q&A



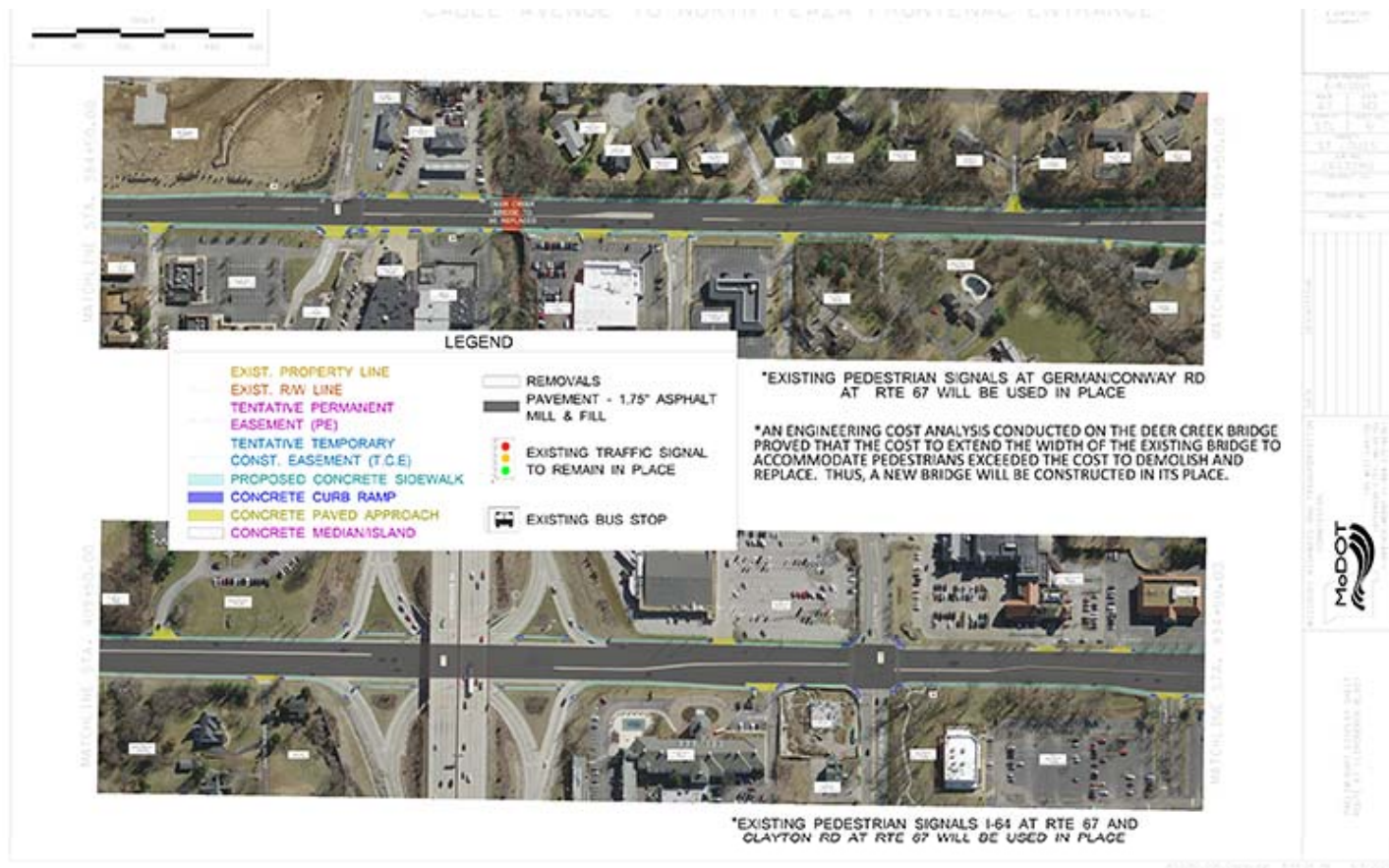
## Lindbergh: Mary Institute to south of Arthur Place



If you have questions, please share them in Q&A



## Lindbergh: Cable Ave to north of Plaza Frontenac



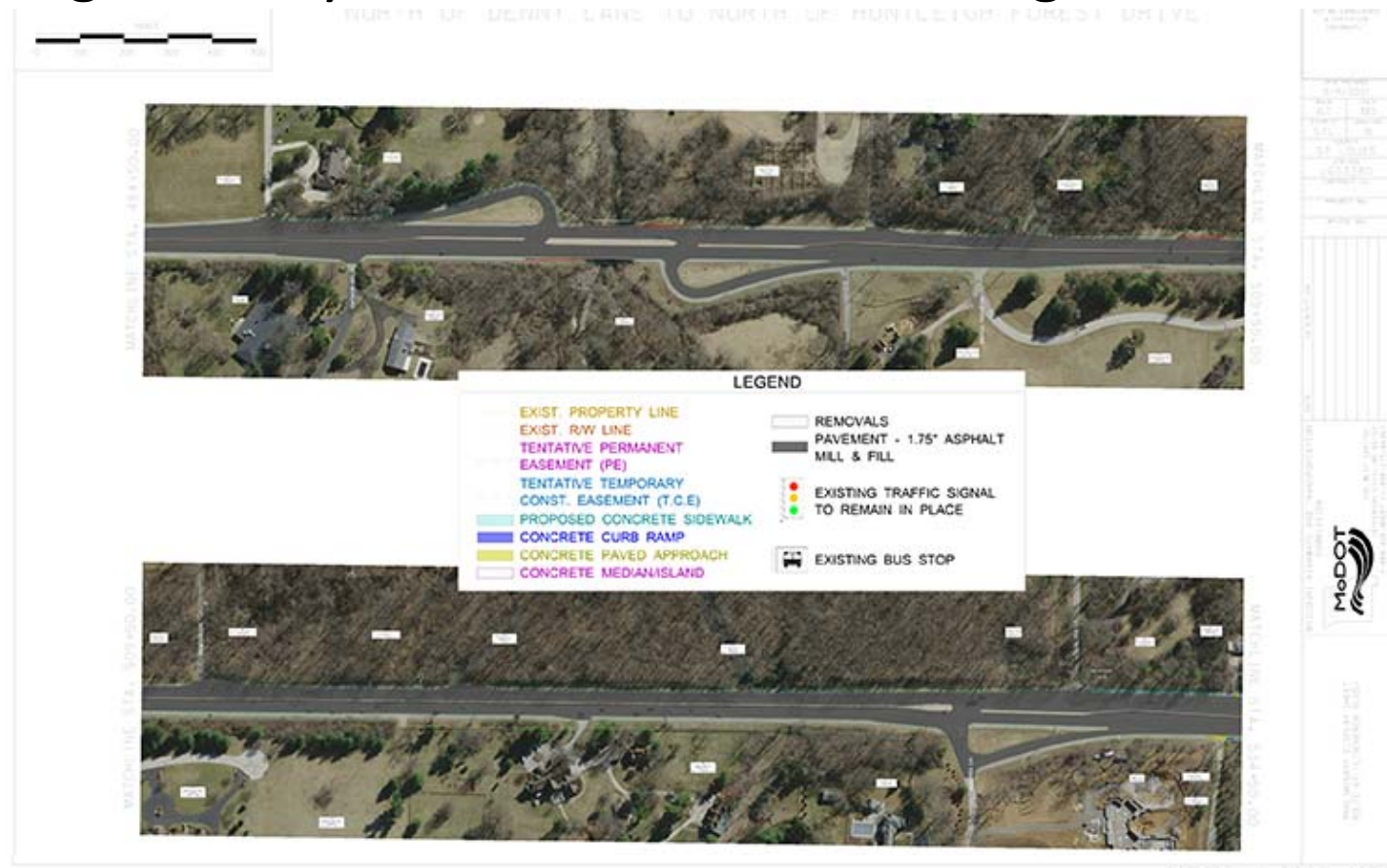
**If you have questions, please share them in Q&A**

## Lindbergh: Library entrance to north of Huntleigh Woods Drive



If you have questions, please share them in Q&A

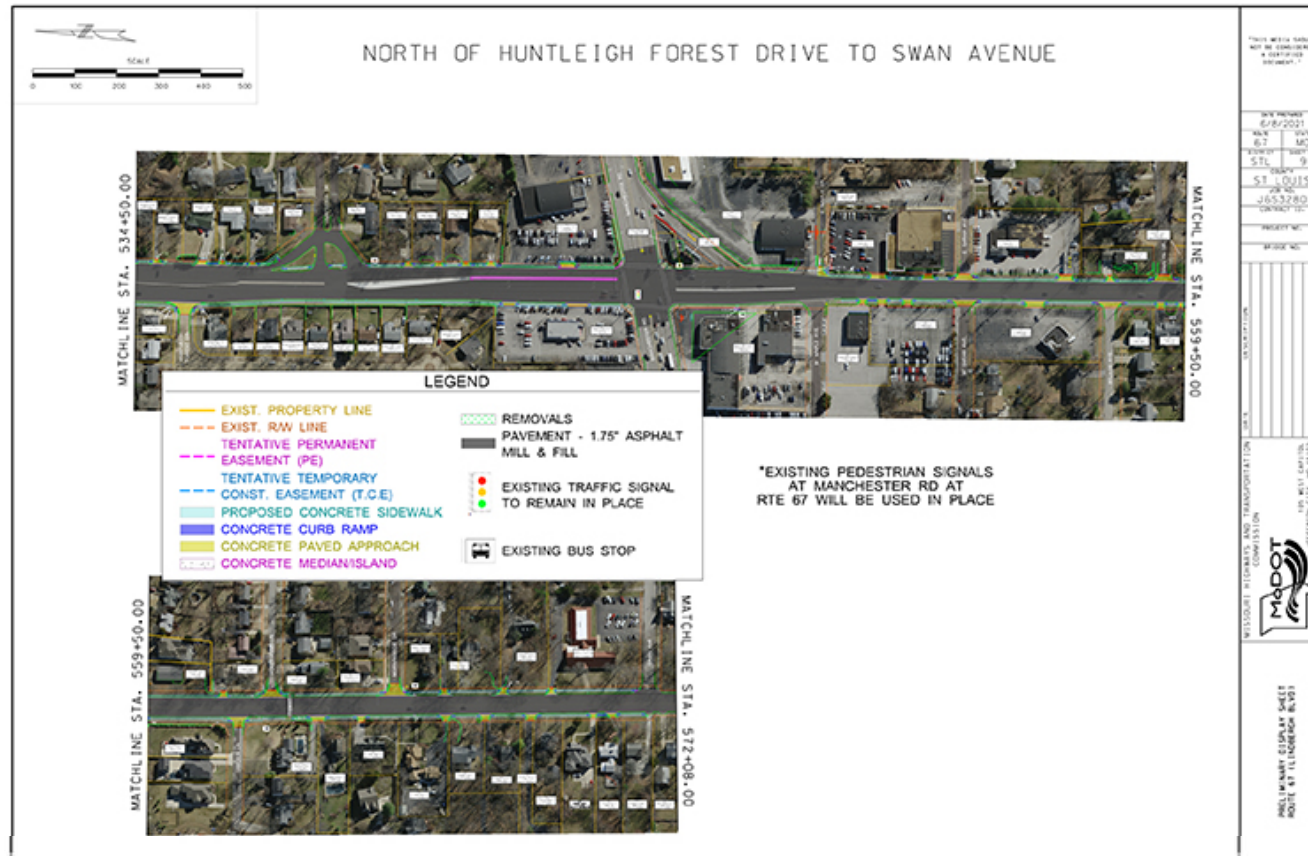
## Lindbergh: Denny Lane to north of Huntleigh Forest Drive



If you have questions, please share them in Q&A



Lindbergh: north of Huntleigh Forest Drive to Swan Avenue



**If you have questions, please share them in Q&A**

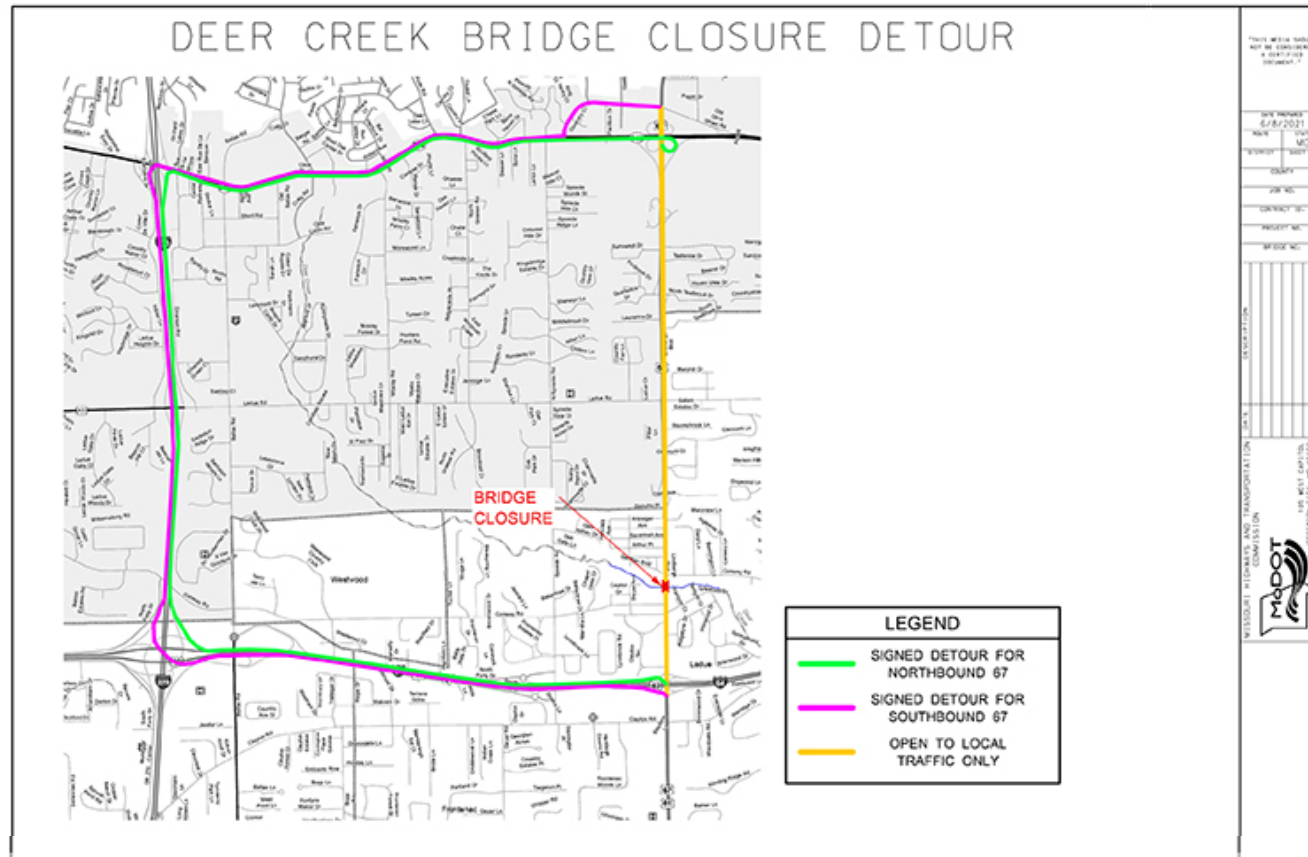


# Deer Creek Bridge



- As a part of this project, the bridge over Deer Creek (just south of Conway) will be removed and replaced over the summer of 2024. The bridge will close to through traffic around Memorial Day and should reopen by Labor Day. Traffic will be able to access businesses on both sides of the bridge, but won't be able to cross over

## Lindbergh: Deer Creek bridge closure detour



If you have questions, please share them in Q&A

What are the anticipated impacts?

- Drivers can expect lane closures in both directions as crews are working to update sidewalks. The bridge over Deer Creek will be closed to all traffic in summer 2024 – Lindbergh between I-64 and Olive will be open to local traffic only. During the resurfacing, residents will have noise and lights during nighttime hours, and drivers will have lanes closed in both directions.

# What is the anticipated timeline?

<b>Event</b>	<b>Time</b>
<b>Preliminary plans</b>	Complete
<b>Public informational meeting</b>	June 23, 2021
<b>Right of Way process starts</b>	Summer 2021
<b>Project awarded</b>	Early spring 2023
<b>Construction begins</b>	Spring 2023
<b>Deer Creek bridge closure</b>	Summer 2024
<b>Project complete</b>	Late fall 2024



## How can I Submit my comment? Contacts?



- ☐ Please submit all comments by July 7, 2021 at 4 p.m.
- ☐ [Share your thoughts on the project here.](#)  
You can also access the survey by scanning the QR code to the left.
- ☐ **Contact the project manager by e-mail:**  
**Stuart.McNeil@modot.mo.gov** or by phone:  
**314-453-5042**



THANK YOU FOR  
ATTENDING

