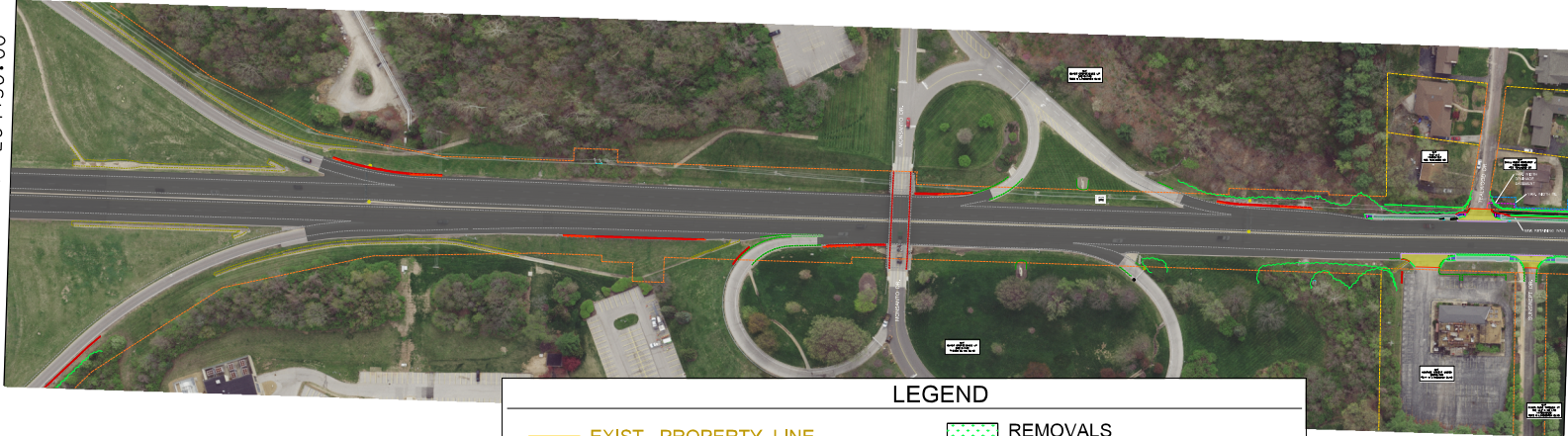


SOUTH OF ROUTE 340 TO MARY INSTITUTE ENTRANCE

MATCHLINE STA. 284+50.00

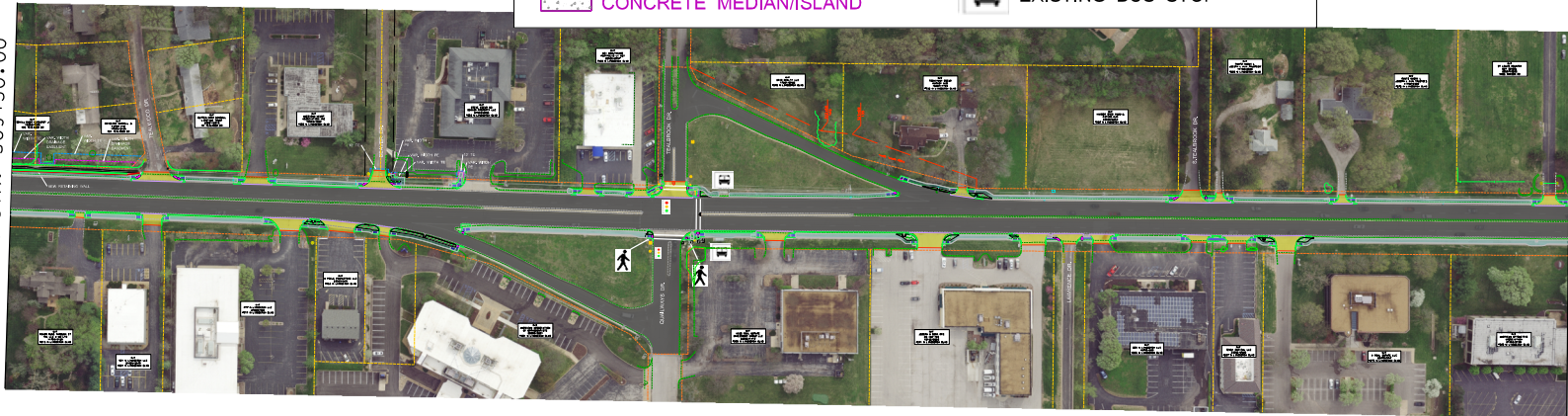


MATCHLINE STA. 309+50.00

LEGEND

- EXIST. PROPERTY LINE
- - - EXIST. R/W LINE
- - - TENTATIVE PERMANENT EASEMENT (PE)
- - - TENTATIVE TEMPORARY CONST. EASEMENT (T.C.E.)
- PROPOSED CONCRETE SIDEWALK
- CONCRETE CURB RAMP
- CONCRETE PAVED APPROACH
- CONCRETE MEDIAN/ISLAND
- REMOVALS
- PAVEMENT - 1.75" ASPHALT MILL & FILL
- NEW PEDESTRIAN SIGNAL
- EXISTING TRAFFIC SIGNAL TO REMAIN IN PLACE
- EXISTING BUS STOP

MATCHLINE STA. 309+50.00



MATCHLINE STA. 334+50.00

"THIS MEDIA SHOULD NOT BE CONSIDERED A CERTIFIED DOCUMENT."

DATE PREPARED
6/8/2021
ROUTE
67
DISTRICT
STL
COUNTY
ST LOUIS
JOB NO.
J6S3280
CONTRACT ID.
PROJECT NO.
BRIDGE NO.

DESCRIPTION

DATE

MISSOURI HIGHWAYS AND TRANSPORTATION COMMISSION



PRELIMINARY DISPLAY SHEET
ROUTE 67 (LINDBERGH BLVD)