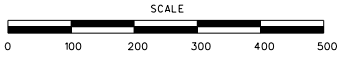
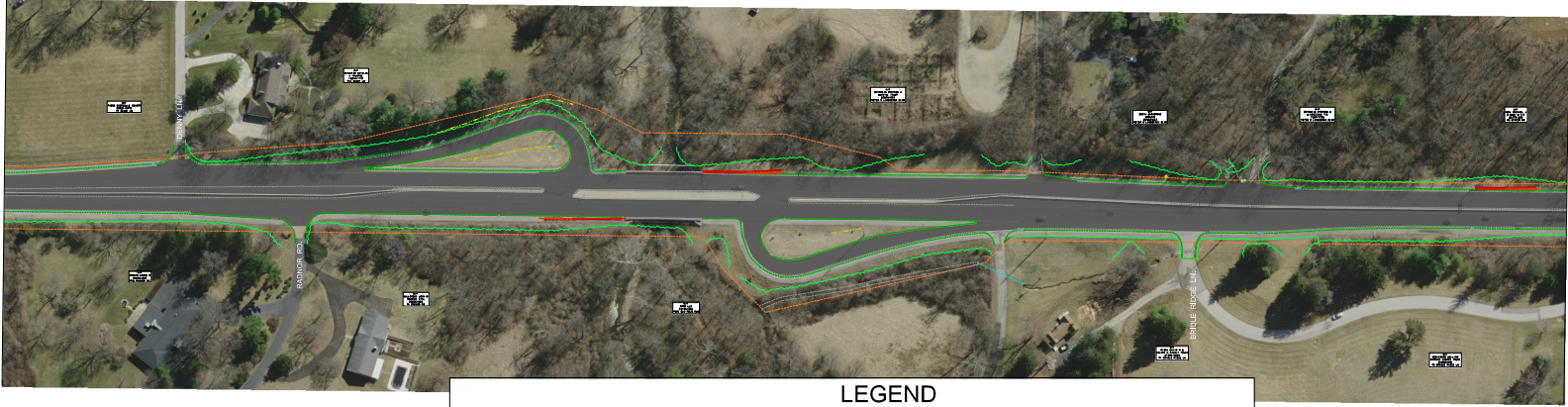


NORTH OF DENNY LANE TO NORTH OF HUNTLEIGH FOREST DRIVE



MATCHLINE STA. 484+50.00



MATCHLINE STA. 509+50.00

LEGEND

- | | |
|---|--|
| <ul style="list-style-type: none"> — EXIST. PROPERTY LINE - - - EXIST. R/W LINE — TENTATIVE PERMANENT EASEMENT (PE) - - - TENTATIVE TEMPORARY CONST. EASEMENT (T.C.E) PROPOSED CONCRETE SIDEWALK CONCRETE CURB RAMP CONCRETE PAVED APPROACH CONCRETE MEDIAN/ISLAND | <ul style="list-style-type: none"> REMOVALS PAVEMENT - 1.75" ASPHALT MILL & FILL ● ● ● EXISTING TRAFFIC SIGNAL TO REMAIN IN PLACE BUS EXISTING BUS STOP |
|---|--|

MATCHLINE STA. 509+50.00



MATCHLINE STA. 534+50.00

"THIS MEDIA SHOULD NOT BE CONSIDERED A CERTIFIED DOCUMENT."

DATE PREPARED 6/8/2021	
ROUTE 67	STATE MO
DISTRICT STL	SHEET NO. 8
COUNTY ST LOUIS	
JOB NO. J6S3280	
CONTRACT ID.	
PROJECT NO.	
BRIDGE NO.	

DATE	DESCRIPTION

MISSOURI HIGHWAYS AND TRANSPORTATION COMMISSION

105 WEST CAPITOL
JEFFERSON CITY, MO 65102
1-888-ASK-MODOT (1-888-275-6636)

PRELIMINARY DISPLAY SHEET
ROUTE 67 (LINDERBACH BLVD)