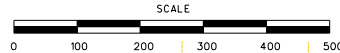
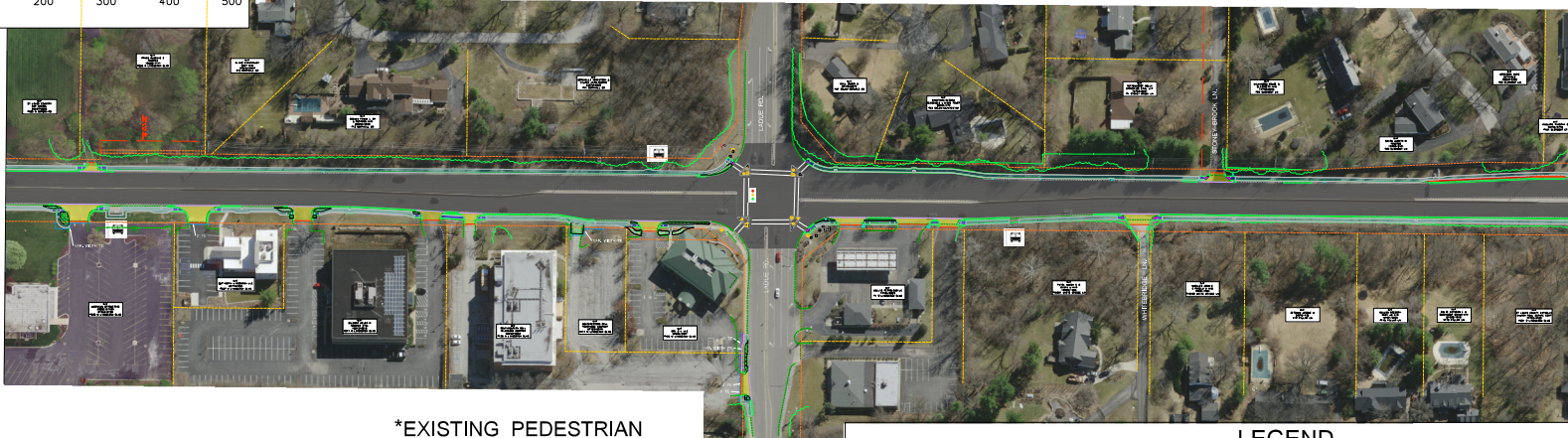


SOUTH OF MARY INSTITUTE ENTRANCE TO SOUTH OF ARTHUR PLACE



MATCHLINE STA. 334+50.00



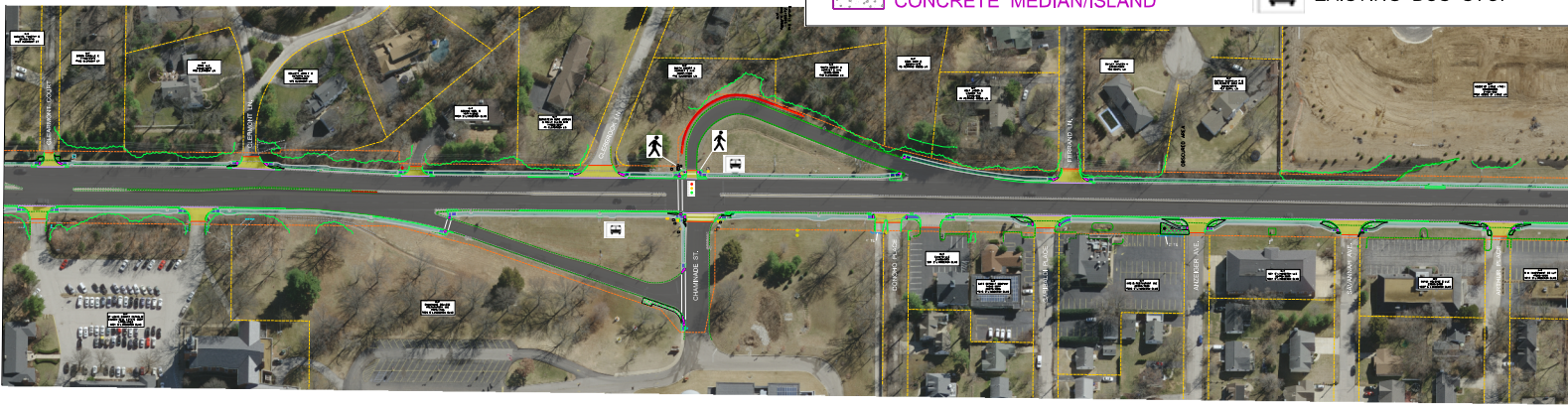
MATCHLINE STA. 359+50.00

*EXISTING PEDESTRIAN SIGNALS AT LADUE RD AND ROUTE 67 WILL BE USED IN PLACE.

LEGEND

- EXIST. PROPERTY LINE
- - - EXIST. R/W LINE
- - - TENTATIVE PERMANENT EASEMENT (PE)
- - - TENTATIVE TEMPORARY CONST. EASEMENT (T.C.E)
- PROPOSED CONCRETE SIDEWALK
- CONCRETE CURB RAMP
- CONCRETE PAVED APPROACH
- CONCRETE MEDIAN/ISLAND
- REMOVALS
- PAVEMENT - 1.75" ASPHALT MILL & FILL
- NEW PEDESTRIAN SIGNAL
- EXISTING TRAFFIC SIGNAL TO REMAIN IN PLACE
- EXISTING BUS STOP

MATCHLINE STA. 359+50.00



MATCHLINE STA. 384+50.00

PRELIMINARY DISPLAY SHEET
ROUTE 67 (LINDBERGH BLVD)

MISSOURI HIGHWAYS AND TRANSPORTATION COMMISSION

105 WEST CAPITOL
JEFFERSON CITY, MO 65102
1-888-ASK-MODOT (1-888-275-6636)

DATE	DESCRIPTION
6/8/2021	DATE PREPARED
67	ROUTE
MO	STATE
STL	DISTRICT
5	SHEET NO.
ST LOUIS	COUNTY
J6S3280	JOB NO.
	CONTRACT ID.
	PROJECT NO.
	BRIDGE NO.

IF A SEAL IS PRESENT ON THIS SHEET IT HAS BEEN ELECTRONICALLY SEALED AND DATED.

THIS MEDIA SHOULD NOT BE CONSIDERED A CERTIFIED DOCUMENT.