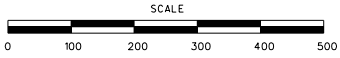
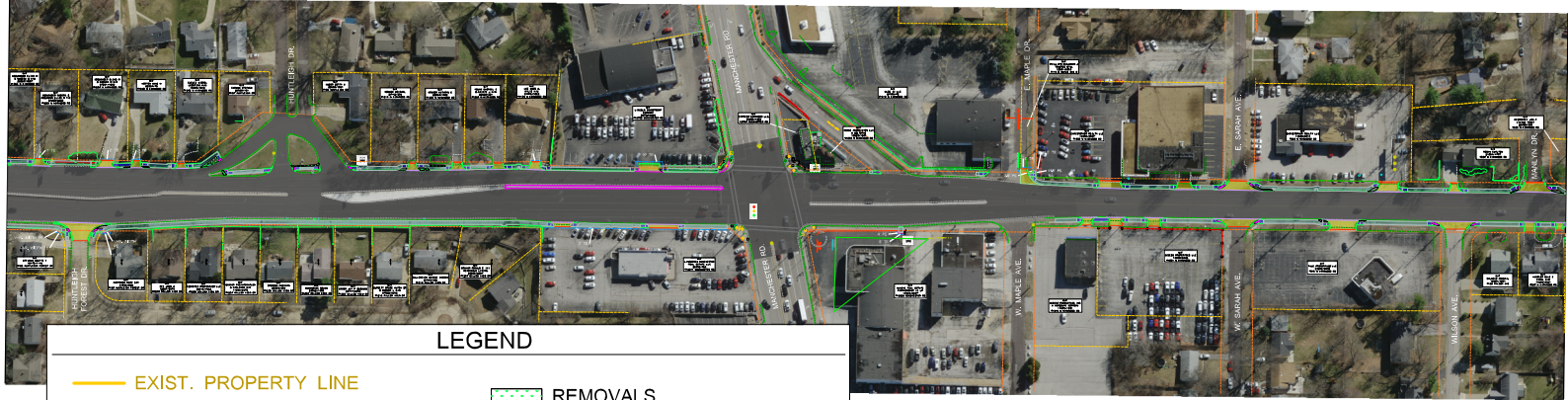


NORTH OF HUNTLEIGH FOREST DRIVE TO SWAN AVENUE



MATCHLINE STA. 534+50.00

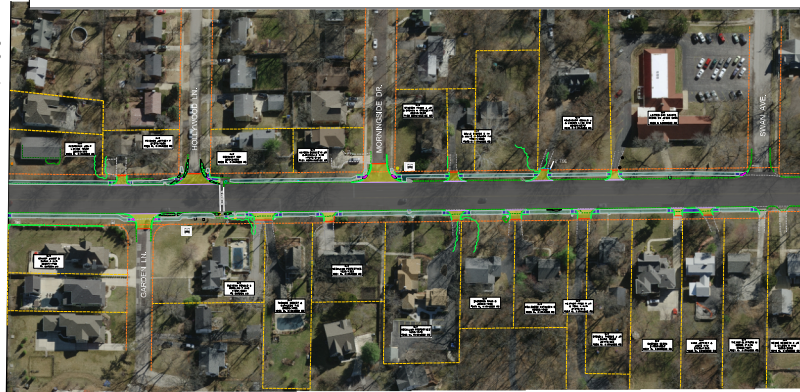


LEGEND

- EXIST. PROPERTY LINE
- - - EXIST. R/W LINE
- - - TENTATIVE PERMANENT EASEMENT (PE)
- - - TENTATIVE TEMPORARY CONST. EASEMENT (T.C.E)
- PROPOSED CONCRETE SIDEWALK
- CONCRETE CURB RAMP
- CONCRETE PAVED APPROACH
- CONCRETE MEDIAN/ISLAND
- REMOVALS
- PAVEMENT - 1.75" ASPHALT MILL & FILL
- EXISTING TRAFFIC SIGNAL TO REMAIN IN PLACE
- EXISTING BUS STOP

MATCHLINE STA. 559+50.00

MATCHLINE STA. 559+50.00



MATCHLINE STA. 572+08.00

***EXISTING PEDESTRIAN SIGNALS AT MANCHESTER RD AT RTE 67 WILL BE USED IN PLACE**

"THIS MEDIA SHOULD NOT BE CONSIDERED A CERTIFIED DOCUMENT."

DATE PREPARED 6/8/2021	
ROUTE 67	STATE MO
DISTRICT STL	SHEET NO. 9
COUNTY ST LOUIS	
JOB NO. J6S3280	
CONTRACT ID.	
PROJECT NO.	
BRIDGE NO.	

DATE	DESCRIPTION

MISSOURI HIGHWAYS AND TRANSPORTATION COMMISSION



105 WEST CAPITOL
JEFFERSON CITY, MO 65102
1-888-ASK-MODOT (1-888-275-6636)

PRELIMINARY DISPLAY SHEET
ROUTE 67 (LINDERBACH BLVD)