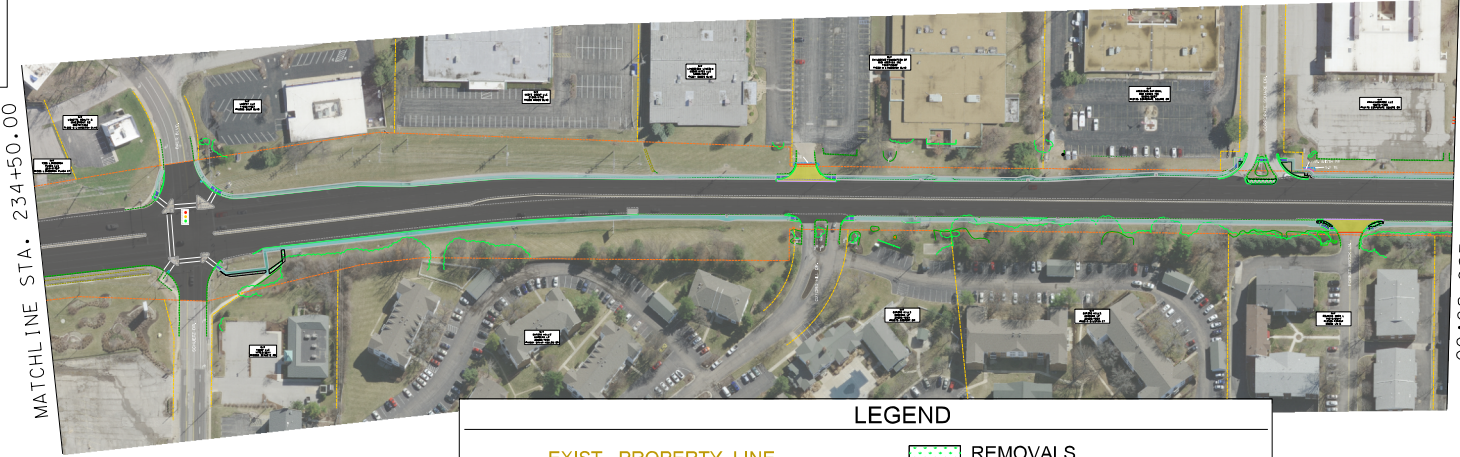
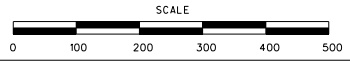


# NORTH OF BAUR BLVD. TO SOUTH OF ROUTE 340

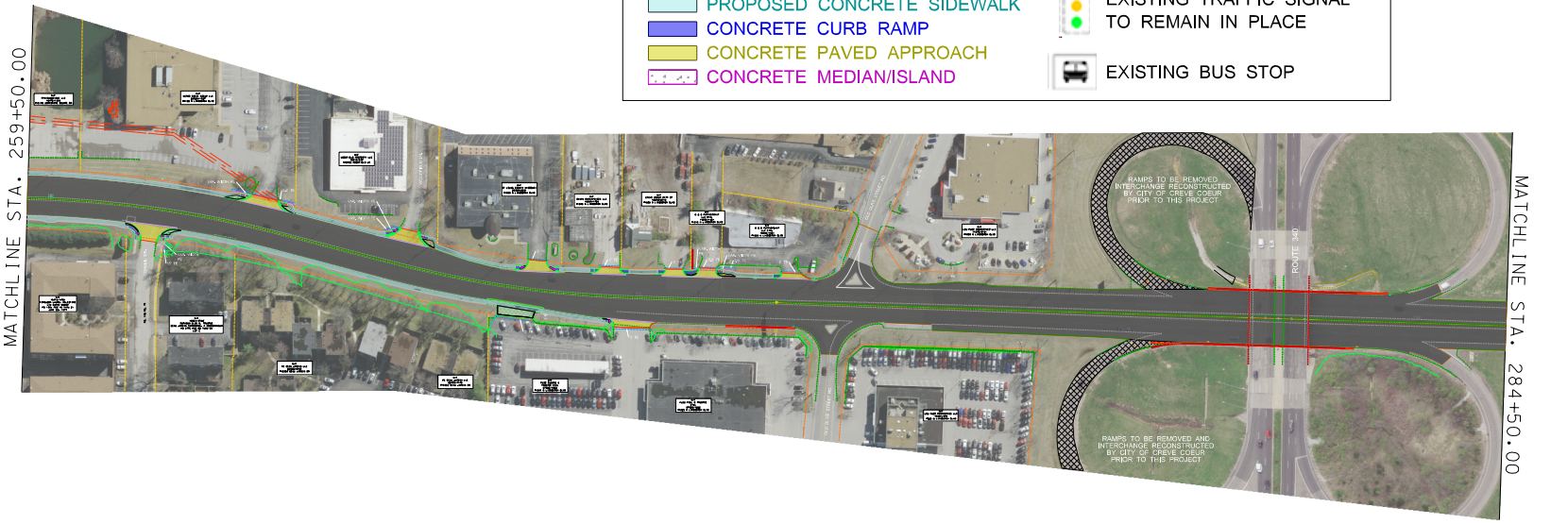


MATCHLINE STA. 234+50.00

MATCHLINE STA. 259+50.00

**\*EXISTING PEDESTRIAN SIGNALS AT BAUR BLVD/SHUETZ RD AND ROUTE 67 WILL BE USED IN PLACE.**

LEGEND	
<span style="color: orange;">—</span> EXIST. PROPERTY LINE	REMOVALS
<span style="color: orange;">- - -</span> EXIST. R/W LINE	PAVEMENT - 1.75" ASPHALT MILL & FILL
<span style="color: magenta;">—</span> TENTATIVE PERMANENT	EX. PAVEMENT REMOVED BY CITY OF CREVE COEUR
<span style="color: magenta;">- - -</span> EASEMENT (PE)	EXISTING TRAFFIC SIGNAL TO REMAIN IN PLACE
<span style="color: blue;">- - -</span> TENTATIVE TEMPORARY	EXISTING BUS STOP
<span style="color: blue;">- - -</span> CONST. EASEMENT (T.C.E)	
PROPOSED CONCRETE SIDEWALK	
CONCRETE CURB RAMP	
CONCRETE PAVED APPROACH	
CONCRETE MEDIAN/ISLAND	



MATCHLINE STA. 259+50.00

MATCHLINE STA. 284+50.00

*THIS MEDIA SHOULD NOT BE CONSIDERED A CERTIFIED DOCUMENT.*	
DATE PREPARED 6/8/2021	
ROUTE 67	STATE MO
DISTRICT STL	SHEET NO. 3
COUNTY ST LOUIS	
JOB NO. J6S3280	
CONTRACT ID.	
PROJECT NO.	
BRIDGE NO.	
DESCRIPTION	DATE

MISSOURI HIGHWAYS AND TRANSPORTATION COMMISSION

105 WEST CAPITOL  
JEFFERSON CITY, MO 65102  
1-888-ASK-MODOT (1-888-275-6636)

PRELIMINARY DISPLAY SHEET  
ROUTE 67 (LINDBERGH BLVD)