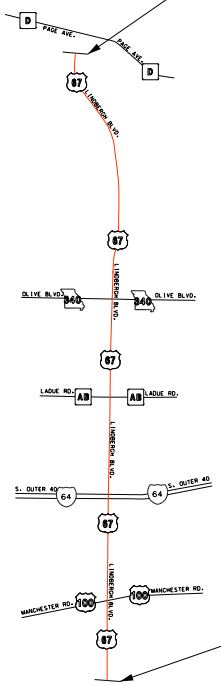
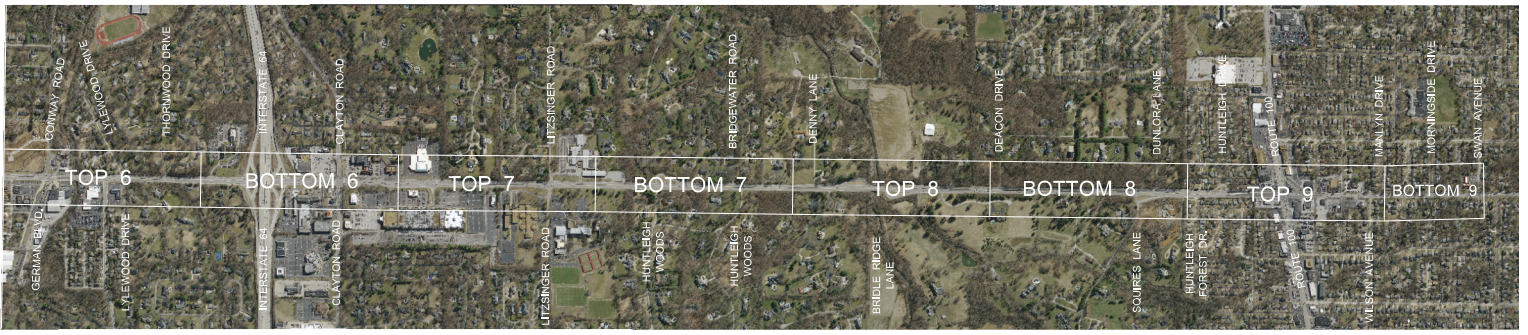



BEGIN US 67 PAVEMENT UPGRADES AND ADA IMPROVEMENTS STA. 195+00



END US 67 PAVEMENT UPGRADES AND ADA IMPROVEMENTS STA. 572+08



<p>MISSOURI HIGHWAYS AND TRANSPORTATION COMMISSION</p> 		<p>DATE PREPARED 6/8/2021</p> <p>ROUTE 67</p> <p>DISTRICT STL</p> <p>COUNTY ST LOUIS</p> <p>JOB NO. J6S3280</p> <p>CONTRACT NO.</p> <p>PROJECT NO.</p> <p>BRIDGE NO.</p>	<p>STATE MO</p> <p>SHEET NO. 1</p>
<p>TITLE</p>			
DESCRIPTION	DATE		

"THIS MEDIA SHOULD NOT BE CONSIDERED A CERTIFIED DOCUMENT."

IF A SEAL IS PRESENT ON THIS SHEET IT HAS BEEN ELECTRONICALLY SEALED AND DATED.