



Mandatory Bridges

June 3, 2021

Laurel McKean, Project Director

Bridge #A0625

Loop 44 EB/MO 66 EB over I-44 EB & WB

Jasper County



- Known as Scotland Interchange
- East of Dueneweg
- TIS/AJR/CE2 in process to completely remove Exit
- Potential to remove from list if cannot gain consensus on elimination
- Option: Keep in and minimum treatment of replacement

Mandatory:	Y	AADT:	1509
Ratings:	3,3,5	Truck %:	13.5
Treatment:	Elimination	Existing Bridge Type:	Concrete Box Girder
Grade Change:	0"	44 Incident Bypass Route:	No
Crossing Type:	Interstate		



Bridge #L0055
MO37 over Dry Branch
Lawrence County



- East side of Pierce City
- Main route into Pierce City
- Water does not overtop the bridge
- No routine removal of drift
- Water will go over the road surface 150’ west of structure
- Fire Station west of location
- City park on south side of RR tracks
- No crashes
- Utilities in area

Mandatory:	Y	AADT:	3279
Ratings:	4,4,3	Truck %:	9.1
Treatment:	Replacement	Existing Bridge Type:	Wide Flange Girder
Potential Grade Change:	0.1’	I44 Designated Bypass Route:	Yes
Crossing Type:	Water		

L0055 - Lawrence - 7/6/20

MO 37 over Dry Branch



Bridge #A0922E
I-44 over Freistatt Branch
Lawrence County



- No knowledge of water over bridge
- Remove drift once every 5 years

- No crashes
- Kissee Farms go under the bridges to access property on N side of I-44



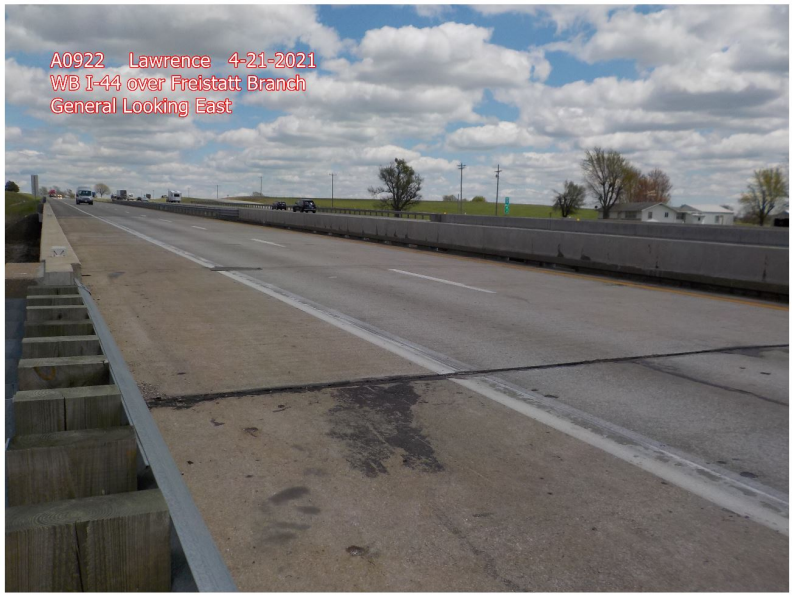
Mandatory:	Y	AADT:	14865
Ratings:	6,4,6	Truck %:	26.2
Min Treatment:	Rehab	Existing Bridge Type:	Wide Flange Girder
Potential Grade Change:	0"	I44 Incident Bypass Route:	Mainline
Crossing Type:	Water		



Bridge #A0922 W
I-44 over Freistatt Branch
Lawrence County



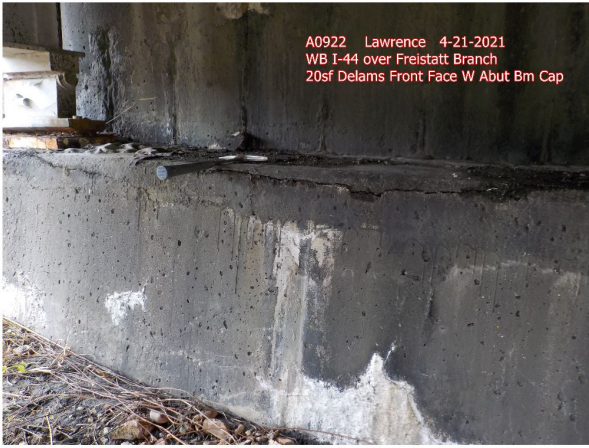
- No knowledge of water over bridge
- Remove drift once every 5 years



- No crashes
- Kisse Farm go under the bridges to access property on both sides of 44



Mandatory:	Y	AADT:	14773
Ratings:	6,4,6	Truck %:	26.2
Min Treatment:	Rehab	Bridge Type:	Wide Flange Girder
Potential Grade Change:	0"	I44 Incident Bypass Route:	Mainline
Crossing Type:	Water		

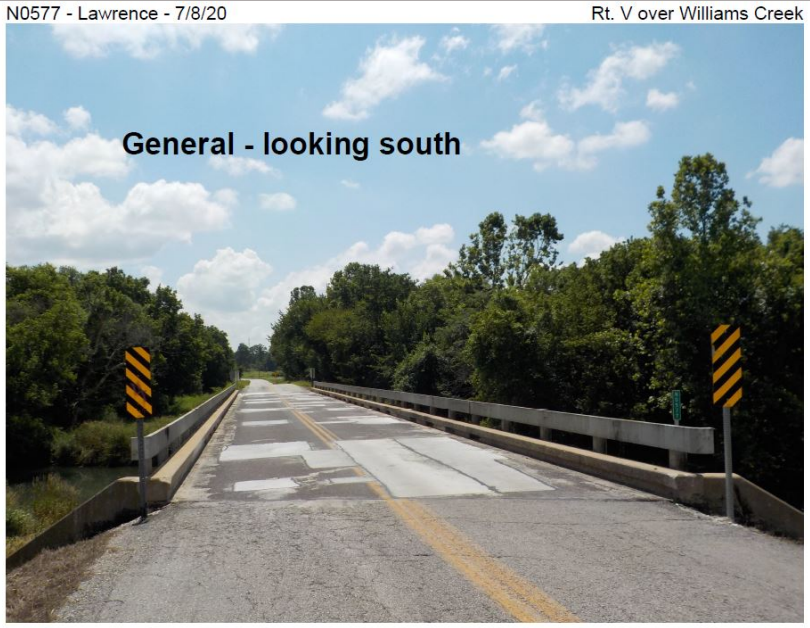


Bridge #N0577
Route V over Williams Creek
Lawrence County

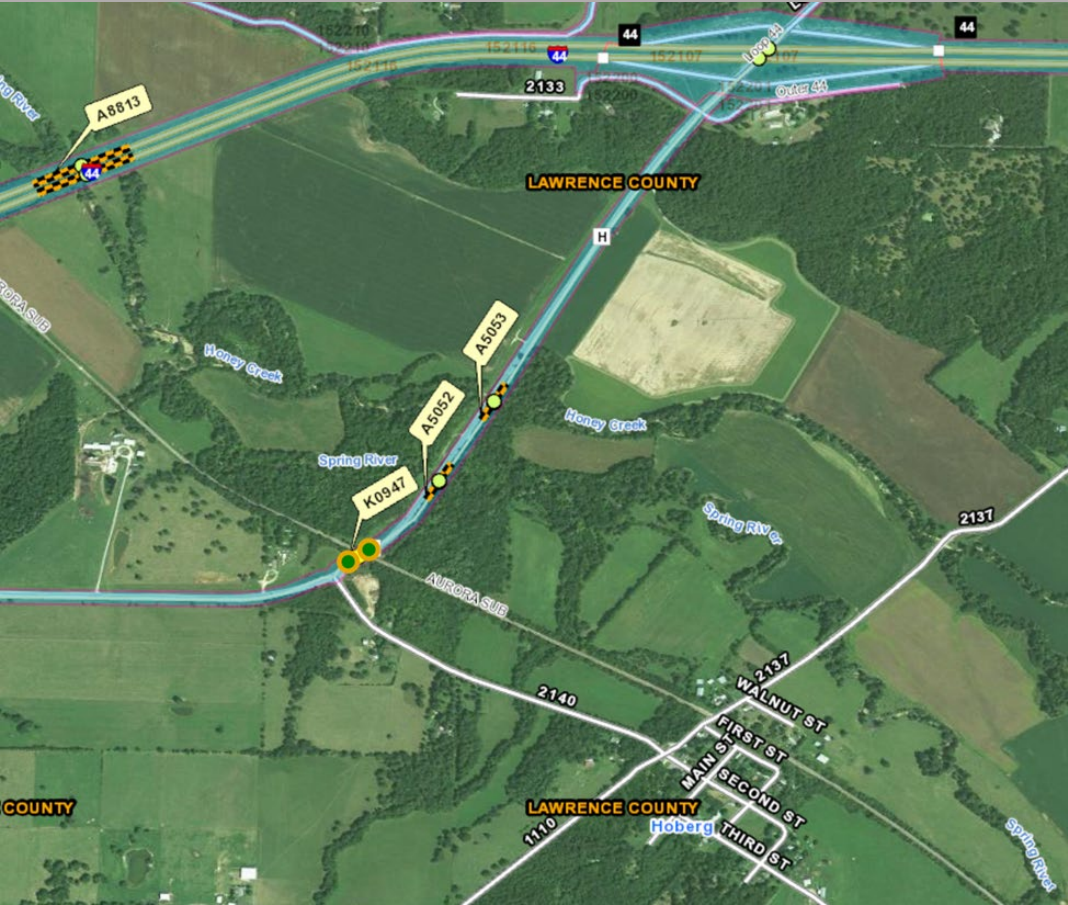


- No routine occurrences of water overtopping bridge
- No major drift issues
- Used by farming equipment
- Tight work space
- ROW tight on south side N of creek
- No crashes

Mandatory:	Y	AADT:	723
Ratings:	3,6,6	Truck %:	6.8
Min Treatment:	Redeck	Existing Bridge Type:	Wide Flange Girder
Potential Grade Change:	0.04'	I44 Incident Bypass Route:	No
Crossing Type:	Water		

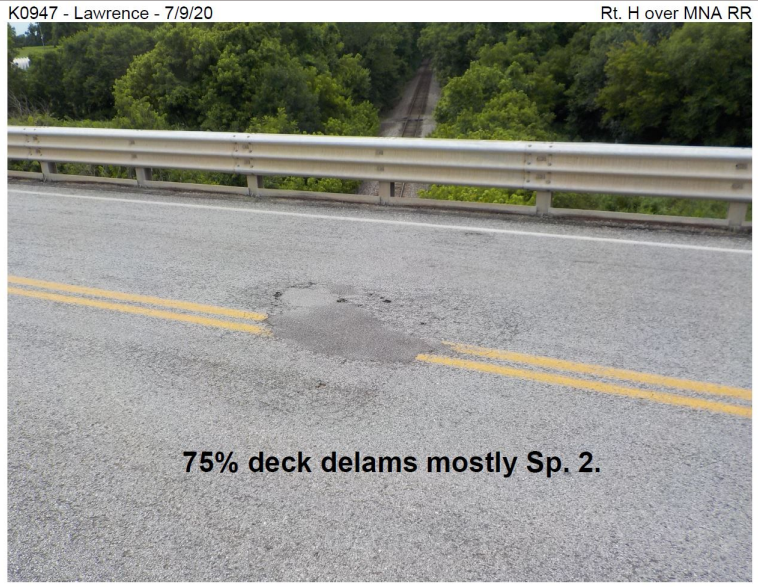
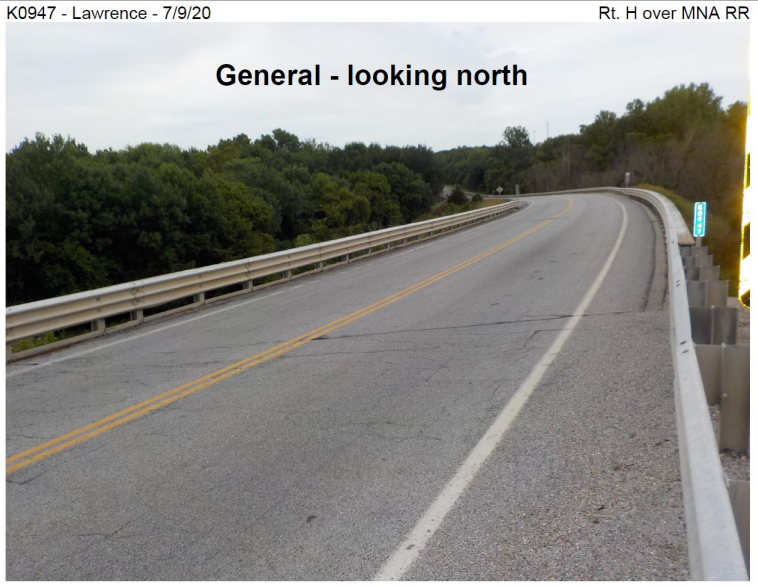


Bridge #K0947
Route H over MNA/UP RR
Lawrence County

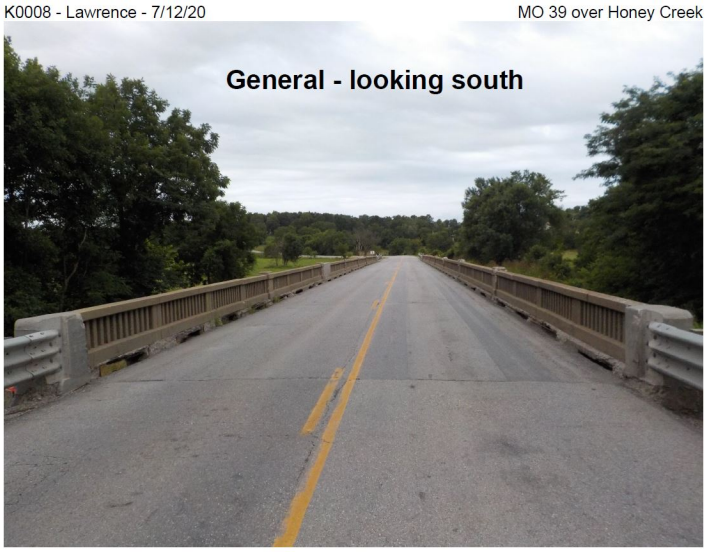


- Conceptual plans have already been sent to UP RR
- Plan to provide at least 30% Preliminary plans
- Potential to remove from list of bridges
- MoDOT has a lot on south end which could be used for staging

Mandatory:	Y	AADT:	4359
Ratings:	3,3,5	Truck %:	12.9
Min Treatment:	Replacement	Existing Bridge Type:	Concrete Deck Girder
Potential Grade Change:	2.33'	I44 Incident Bypass Route:	
Crossing Type:	Railroad		



Bridge #K0008
MO39 over Honey Creek
Lawrence County



- MO39 connects Mt. Vernon to Aurora
- Water has gone over the road but not very deep
- Seldomly must remove drift
- Trash trucks, farming and fuel trucks utilize the route
- Narrow bridge and curve on south side

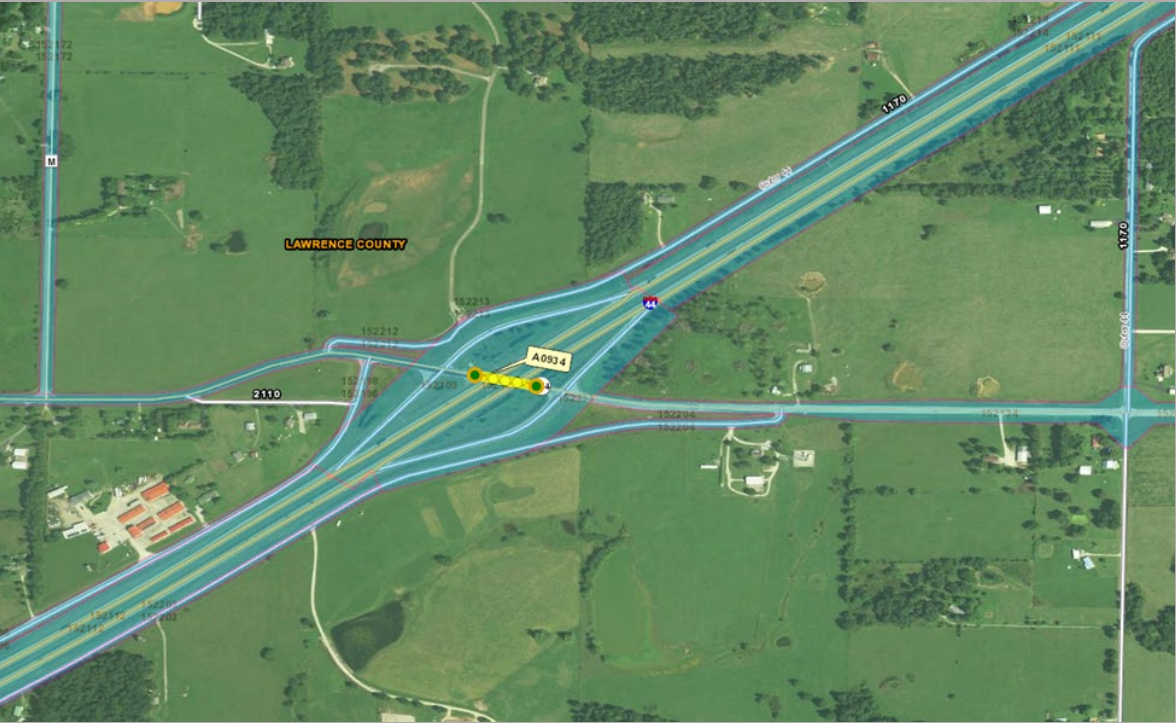
9 crashes in 6 years

- 7 crashes involved two vehicles striking mirrors or other part of vehicle with many involving one of the vehicles crossing the centerline

Mandatory:	Y	AADT:	4585
Ratings:	3,3,5	Truck %:	15.5
Min Treatment:	Replacement	Existing Bridge Type:	Concrete Deck Girder
Potential Grade Change:	3"	I44 Incident Bypass Route:	
Crossing Type:	Water		



Bridge #A0934 MO174 over I-44 EB & WB Lawrence County



- One of 3 interchanges for Mt. Vernon
- Used by dump trucks, fuel trucks, tractor trailers and farming
- Must be mindful of sight distance
- Energy truck company down outer road
- Quarry out south of bridge
- Housing developments
- Standing water under bridge



- Crashes at ramps and W OR typical of intersection crash types



Mandatory:	Y	AADT:	2672
Ratings:	3,4,6	Truck %:	6.5
Min Treatment:	Redeck	Existing Bridge Type:	Wide Flange Girder
Potential Grade Change:	2’-10”	I44 Incident Bypass Route:	Yes
Crossing Type:	Interstate		

Bridge #P0158 Route M over Turnback Creek Lawrence County

Mandatory:	Y	AADT:	295
Ratings:	3,3,5	Truck %:	10.7
Min Treatment:	Replacement	Existing Bridge Type:	Concrete Deck Girder
Potential Grade Change:	0"	I44 Incident Bypass Route:	No
Crossing Type:	Water		

- No knowledge of water overtopping bridge
- 4” deep water over roadway about 100 yards
- Remove drift about once every other year
- Farming
- Fishing and recreational use around and under bridge
- One lane bridge



- No crashes

Bridge #A0596 MO96 over Johnson Creek Lawrence County

Mandatory:	Y	AADT:	4129
Ratings:	3,6,6	Truck %:	25.1
Min Treatment:	Redeck	Existing Bridge Type:	Wide Flange Girder
Potential Grade Change:	0"	I44 Incident Bypass Route:	Yes
Crossing Type:	Water		

- No known issues of water overtopping bridge
- No issues with drift
- Fuel trucks, trash trucks, farming and grain truck usage
- No crashes
- Main incident bypass route for I-44
- Route for trash trucks to Lamar landfill because cannot use I-44



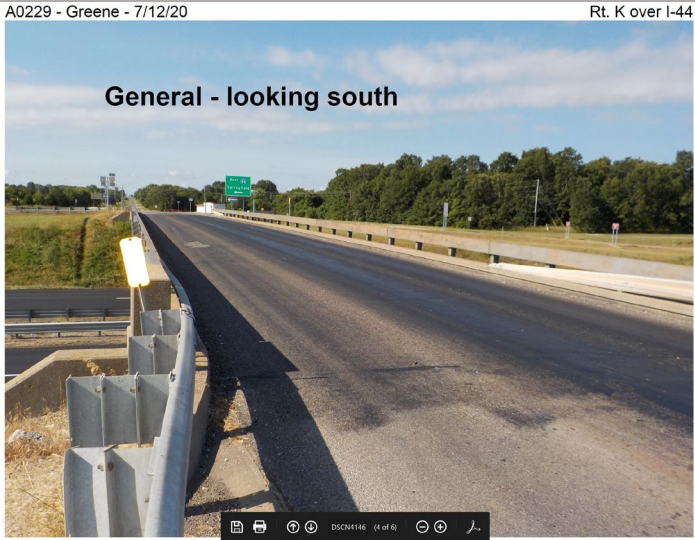
Bridge #A0597 MO96 over Turnback Creek Lawrence County

Mandatory:	Y	AADT:	6060
Ratings:	4,6,5	Truck %:	16.6
Min Treatment:	Redeck	Existing Bridge Type:	Simple WF & Cont. Non-Comp WF
Potential Grade Change:	0"	I44 Incident Bypass Route:	44 Designated
Crossing Type:	Water		

- No known overtopping of bridge
- 500’ to west of bridge water does overtop the road but not deep
- Fuel trucks, trash trucks, farming and grain trucks
- Main incident bypass route for I-44
- Route for trash trucks to Lamar Landfill
- No crashes
- Conservation river public access to the north of the bridge
- Brittain Mill to the south of the bridge



Bridge #A0229
Route K over I-44 EB&WB
Greene County



- Hood’s Truck Stop in the NW quadrant
- CDL training school in NE Quadrant
- WB67 design critical
- Potential concrete pavement only option
- Sight distance critical at ramp intersections
- Crash History: 2015- 2021
 - 7 crashes total
 - 3 angle type crashes EB Ramp intersection
 - 3 angle type crashes at WB Ramp intersection
 - 1 dump truck with raised bed striking the bridge underneath

Mandatory:	Y	AADT:	1832
Ratings:	5,5,6	Truck %:	8.2
Min Treatment:	Replacement	Existing Bridge Type:	Voided Concrete Slab
Potential Grade Change:	2’-9”+	I44 Incident Bypass Route:	Yes
Crossing Type:	Interstate		

Bridge #A0174W
I-44 over Pickerel Creek
Greene County

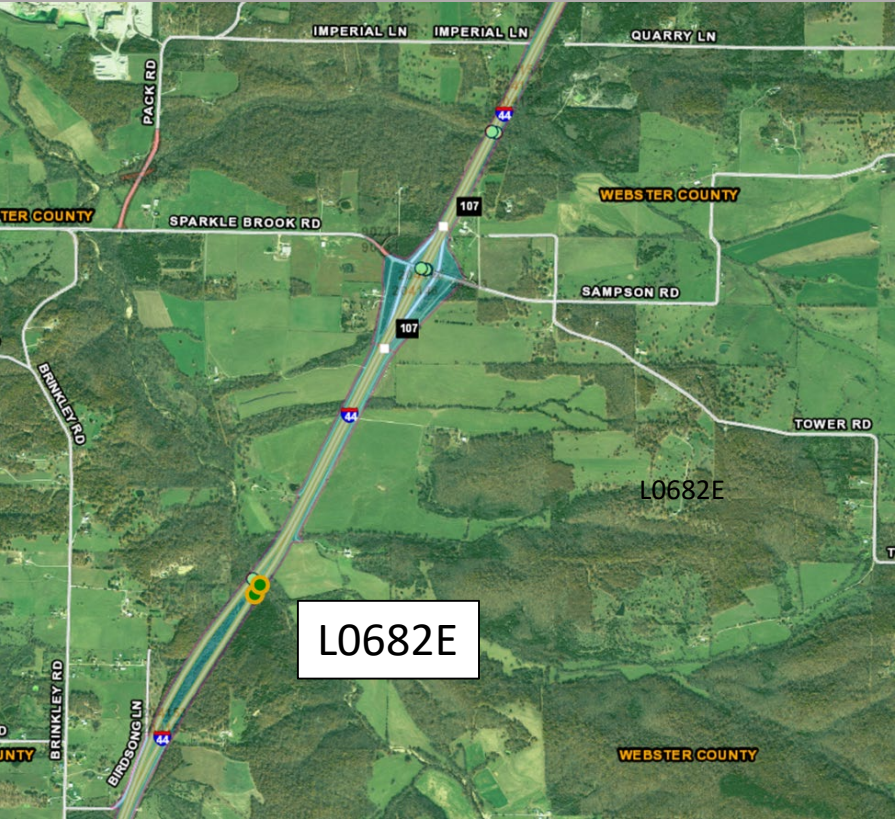


- Water does not overtop bridge
- Remove drift maybe every 5 years
- Landowner on S side does go to N side under bridge
- No correctable crashes
- Hydraulics and profile must match new companion bridge
- Traffic control concern with bridge being in valley and another bridge east of location

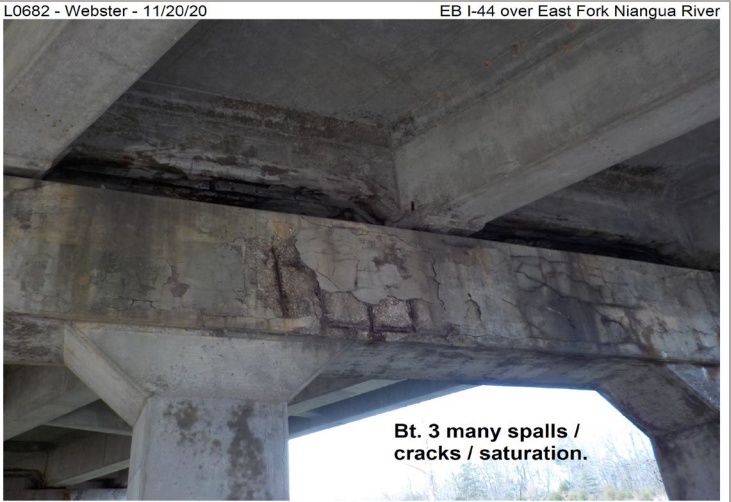
Mandatory:	Y	AADT:	16620
Ratings:	4,4,6	Truck %:	26.2
Min Treatment:	Replacement	Existing Bridge Type:	Concrete Deck Girder
Potential Grade Change:	0"	I44 Incident Bypass Route:	Mainline
Crossing Type:	Water		



Bridge #L0682E
I-44 over East Fork Niangua River
Webster County



- No issues with water overtopping bridge
- Remove drift every 2 to 3 years
- No design exceptions for Freeboard will be accepted
- Design in conjunction with companion bridge L0379



Mandatory:	Y	AADT:	13840
Ratings:	6,3,4	Truck %:	29.3
Min Treatment:	Replacement	Existing Bridge Type:	Concrete Deck Girder (Widened)
Potential Grade Change:	0"	I44 Incident Bypass Route:	Mainline
Crossing Type:	Water		

Bridge #L0379W I-44 over East Fork Niangua River Webster County



- No issues with water overtopping bridge
- Remove drift every 2 to 3 years
- No design exceptions for freeboard will be accepted
- Design in conjunction with companion bridge L0682

Crash History 2015- 2021

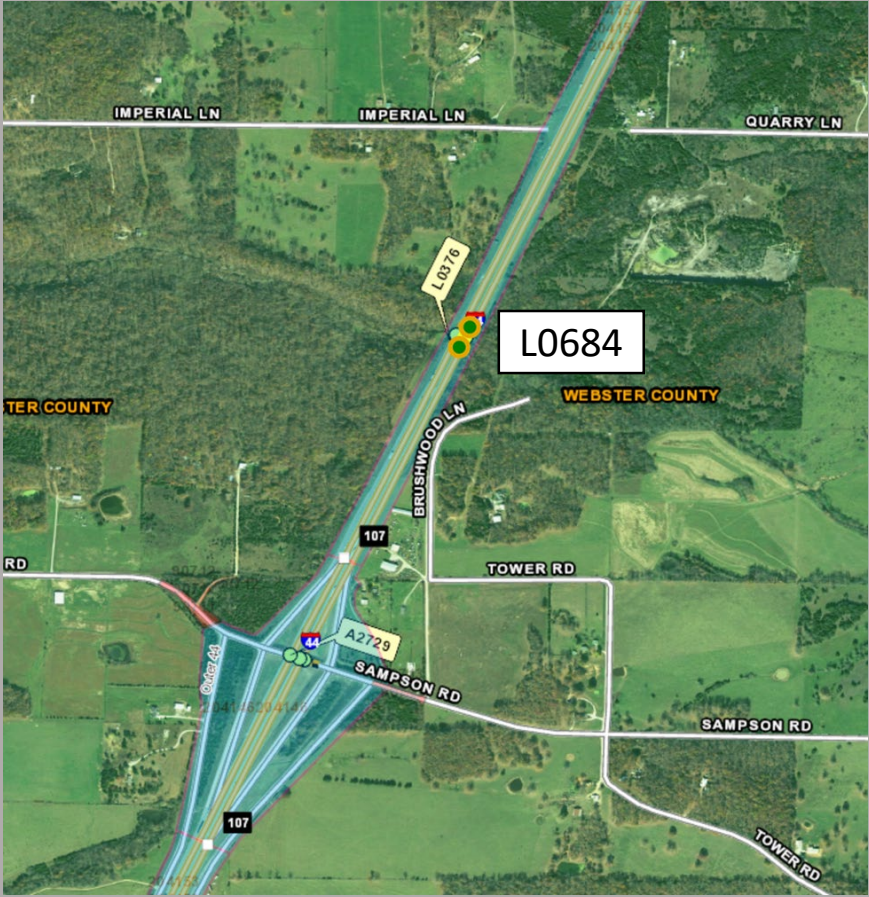
- 7 crashes East of and on bridge
- 3 went off left side of road, down the grassy median and into the Niangua
- 2 lost control downhill, hit end terminal, ended in grassy median
- 1 lost control avoiding deer
- 1 hit disabled car parked on shoulder



Mandatory:	Y	AADT:	14,594
Ratings:	5,4,4	Truck %:	28.7
Min Treatment:	Replacement	Existing Bridge Type:	Concrete Deck Girder (Widened)
Potential Grade Change:	0"	I44 Incident Bypass Route:	Mainline
Crossing Type:	Water		

- Bridge has slight incline as you exit bridge end creating issues during winter events

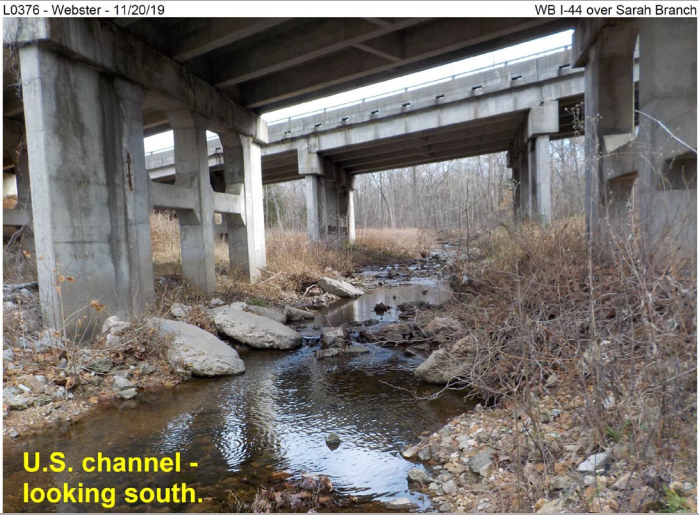
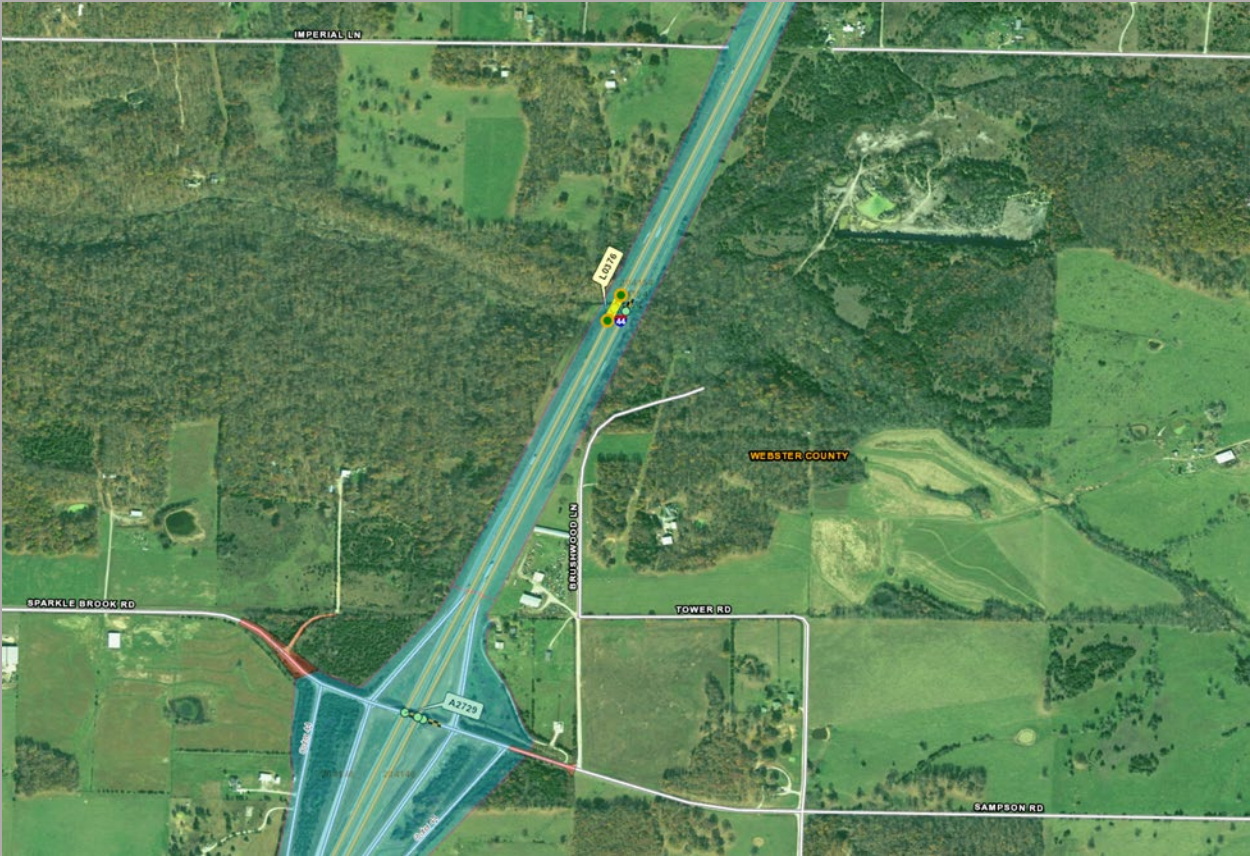
Bridge #L0684E I-44 over Sarah Branch Webster County



- Known as Sarah Branch and Bowen Prairie Creek
- No knowledge of water overtopping bridge
- Clean drift maybe every 5 years
- Design exceptions for freeboard will not be accepted
- Design in conjunction with companion bridge L0376

Mandatory:	Y	AADT:	14633
Ratings:	5,5,5	Truck %:	29.3
Min Treatment:	Replacement	Existing Bridge Type:	Concrete Deck Girder (Widened)
Potential Grade Change:	0"	I44 Incident Bypass Route:	Mainline
Crossing Type:	Water		

Bridge #L0376W
I-44 over Sarah Branch
Webster County



- Known as Sarah Branch and Bowen Prairie Creek
- No knowledge of water overtopping bridge
- Clean drift maybe every 5 years
- Design exception for freeboard will not be accepted
- Design in conjunction with companion bridge L0684

Mandatory:	Y	AADT:	14506
Ratings:	4,4,4	Truck %:	28.7
Min Treatment:	Replacement	Existing Bridge Type:	Concrete Deck Girder (Widened)
Potential Grade Change:	0"	I44 Incident Bypass Route:	Mainline
Crossing Type:	Water		

