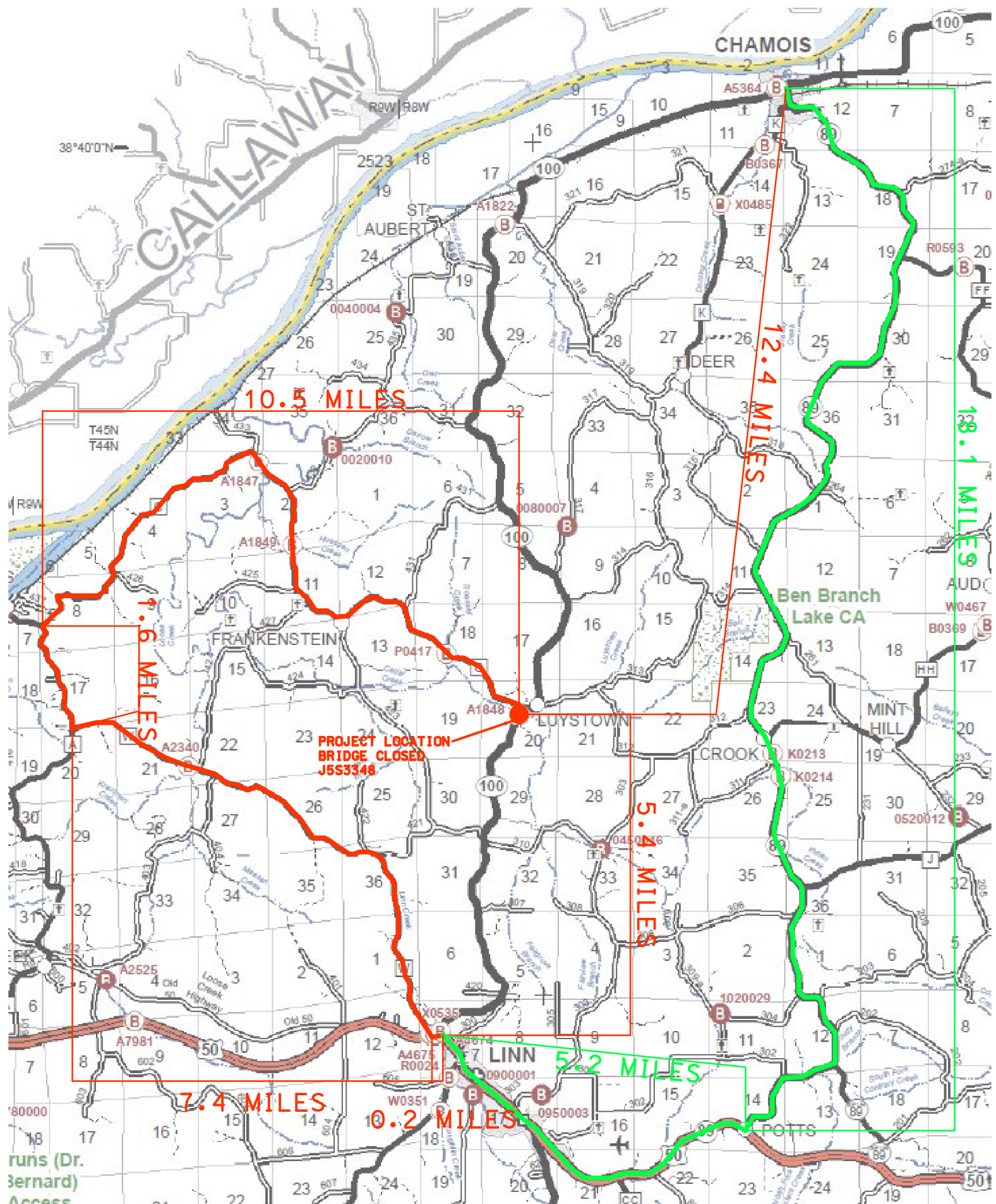


OSAGE COUNTY ROUTE 100 BRIDGE REPLACEMENT OVER CEDAR CREEK



POSSIBLE DETOUR ROUTE
TOTAL LENGTH - 25.1 MILES

POSSIBLE DETOUR ROUTE
TOTAL LENGTH - 41.1 MILES



For more information: www.modot.org/central
573.751.3322 or 1.888.275.6636 (toll-free)
Facebook: MoDot.Central
Instagram: @MoDot_Central

