

LACLEDE COUNTY, ROUTE 32 MILL CREEK

EXISTING BRIDGE

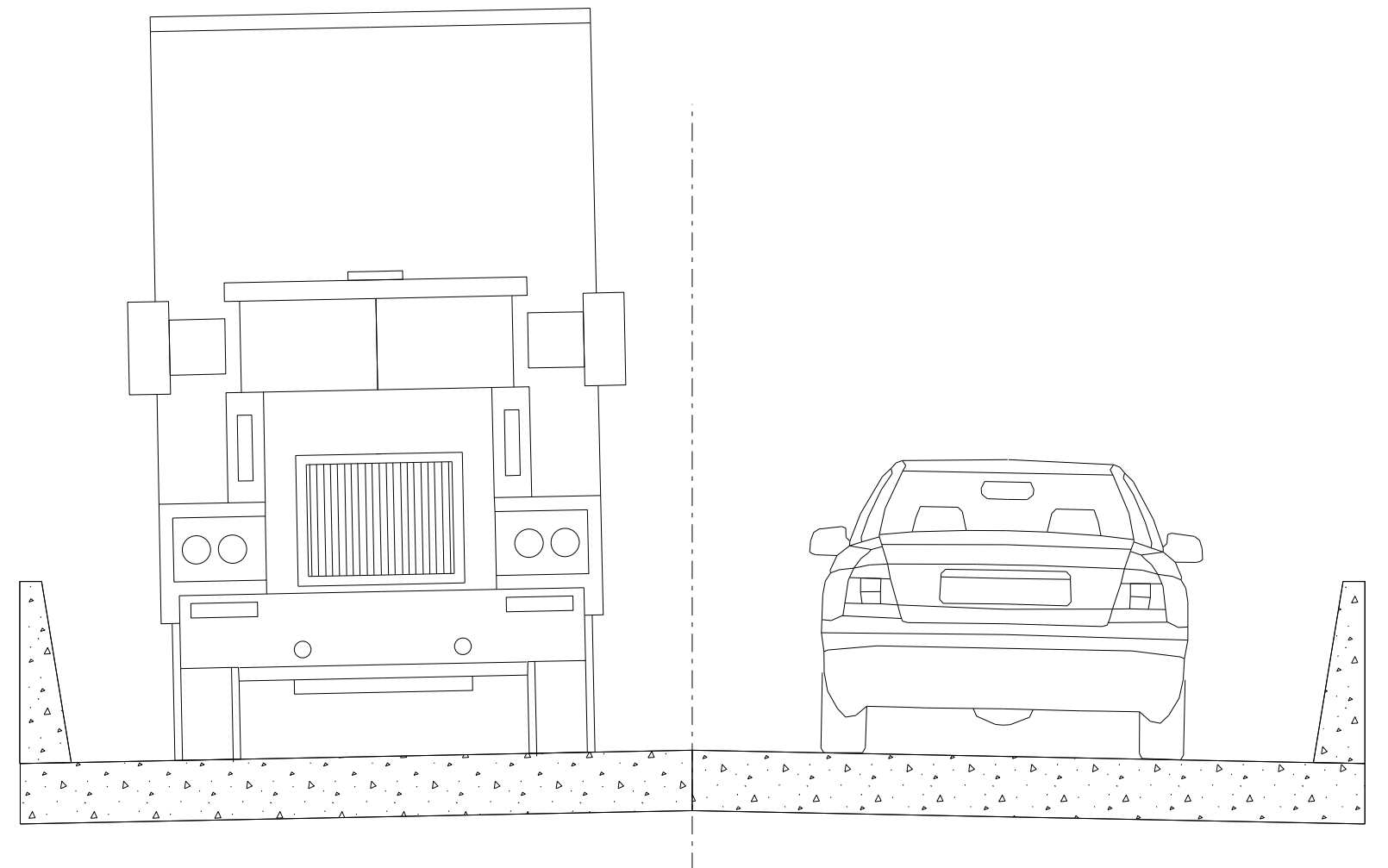


EXISTING BRIDGE FACTS

STATE ROUTE 32 – BRIDGE T0672

- EXISTING BRIDGE WAS CONSTRUCTED IN 1936
- LENGTH = 92' AND WIDTH = 26'-10"

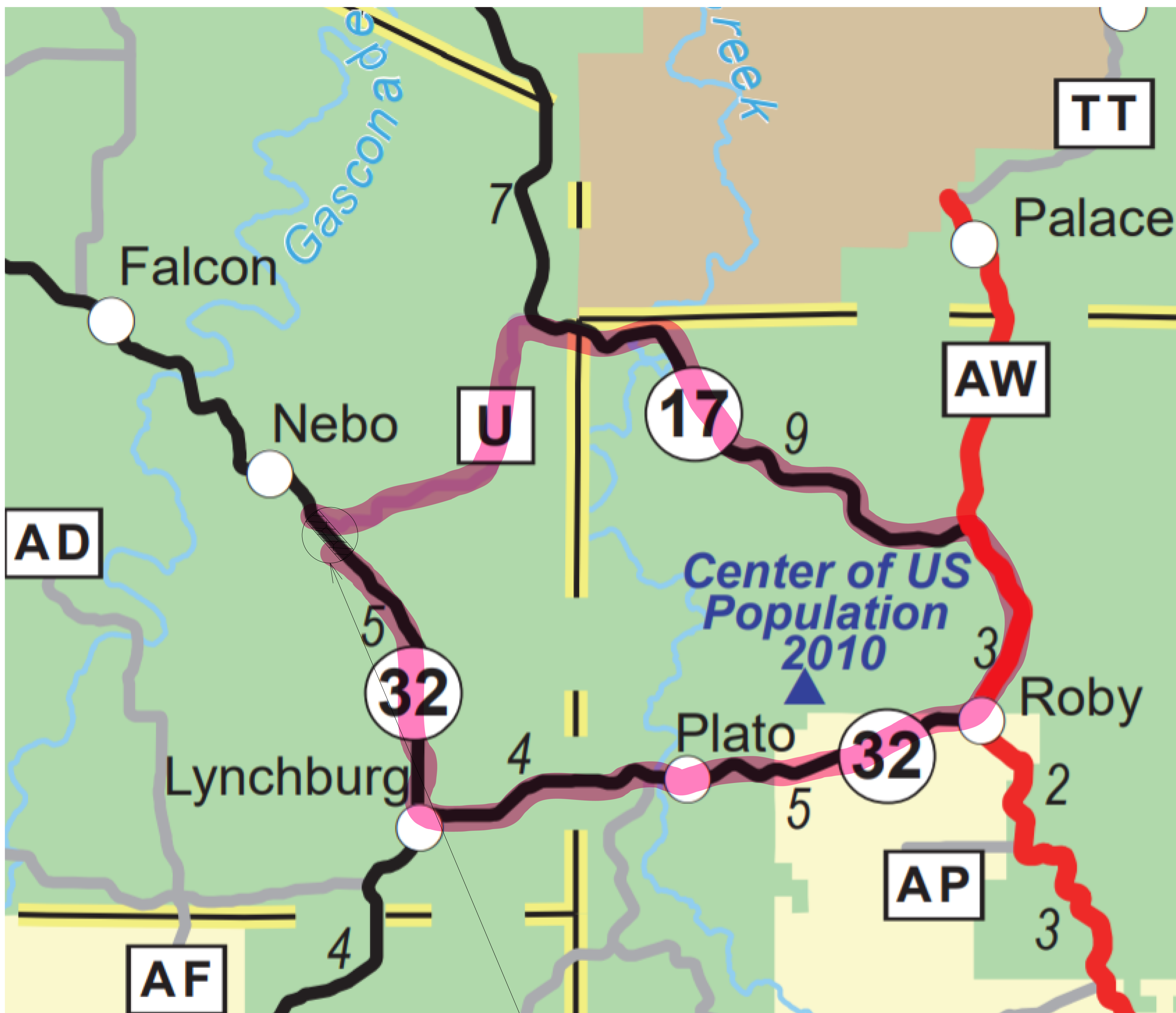
PROPOSED BRIDGE TYPICAL SECTION



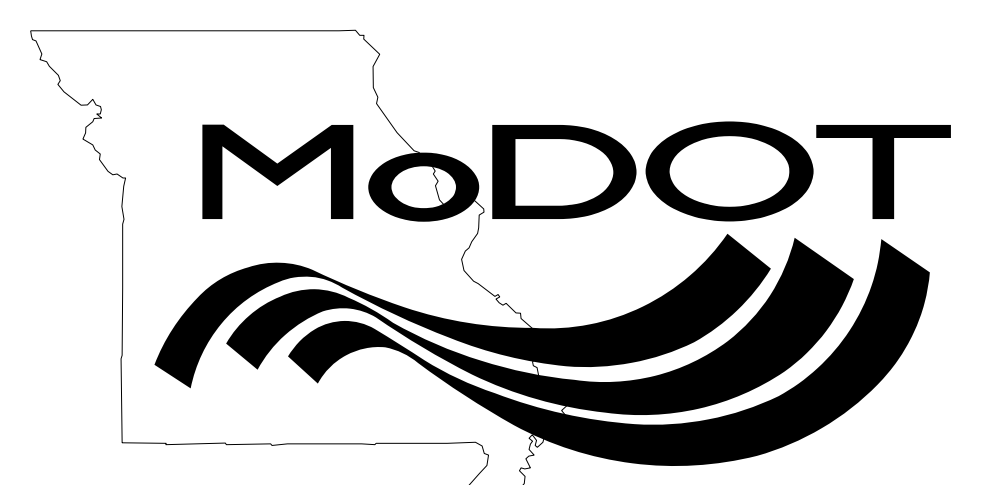
PROPOSED BRIDGE FACTS

STATE ROUTE 32 – BRIDGE A9011

- CONSTRUCTION YEAR 2022
- LENGTH = 103'-7" AND WIDTH = 26'-8"



PROJECT LOCATION
BRIDGE CLOSED



SIGNED DETOUR – 33 MILES