

Missouri

HIGH-PRIORITY UNFUNDED NEEDS



2021



INTRODUCTION



Message from Missouri Department of Transportation Director Patrick McKenna

The citizens of Missouri own a tremendous asset – the state transportation system. A significant component of the state system is the 33,832 miles of roads and 10,397 bridges, both of which rank among the largest for any state in the nation. On average, Missouri drivers pay \$30 per month in fuel taxes and fees to fund the maintenance and improvements to this asset. Over the last 10 years, Missourians have invested in 4,333 projects totaling \$10.9 billion to maintain and improve the system. Looking forward, \$5.8 billion is estimated to be available for projects over the next five years for additional improvements.

Missouri's current road and bridge program is focused on keeping our transportation system in its current condition with limited funds available to address larger system improvements. MoDOT's publication, *The Citizen's Guide to Transportation Funding in Missouri*, identifies \$825 million in high-priority, unfunded annual transportation needs and this figure is understated as it has not been updated for the past couple of years for the impact of rising prices.

Since transportation needs greatly outweigh funding available, the challenge is determining the optimal projects to fund that provide the greatest return on investment to taxpayers. Across every region of the state, feedback from Missourians has consistently prioritized maintaining the existing system as the highest priority. Other priorities include projects that improve safety, spur economic growth and provide more transportation choices.

MoDOT staff have worked with Metropolitan Planning Organizations and Regional Planning Commissions throughout the state to develop a list of unfunded road and bridge needs. The funding assumption targeted a total of \$2.5 billion in two tiers. Tier one includes \$540 million and includes projects we could accomplish in the time of the current STIP if we received more money. These projects have good estimates. Tier two is worth \$2.2 billion and includes projects beyond the current STIP timeframe with broader estimates. The assumed district distribution was based on the Missouri Highways and Transportation Commission's (MHTC) Flexible Funding formula. A third tier worth approximately \$2 billion and multimodal needs will be added in the coming months.

With the priority of maintaining the existing system, MoDOT has developed asset management plans for each district with the goal to maintain current pavement and bridge conditions. The asset management plans focus on preventive maintenance improvements to keep good roads and bridges in good condition. Research shows preventive maintenance solutions, such as cyclical overlays on roads in good condition, are the most cost-effective approach to taking care of road and bridge assets. If preventive maintenance investments were not made, the cost of improving the asset in poor condition can cost four to ten times more.

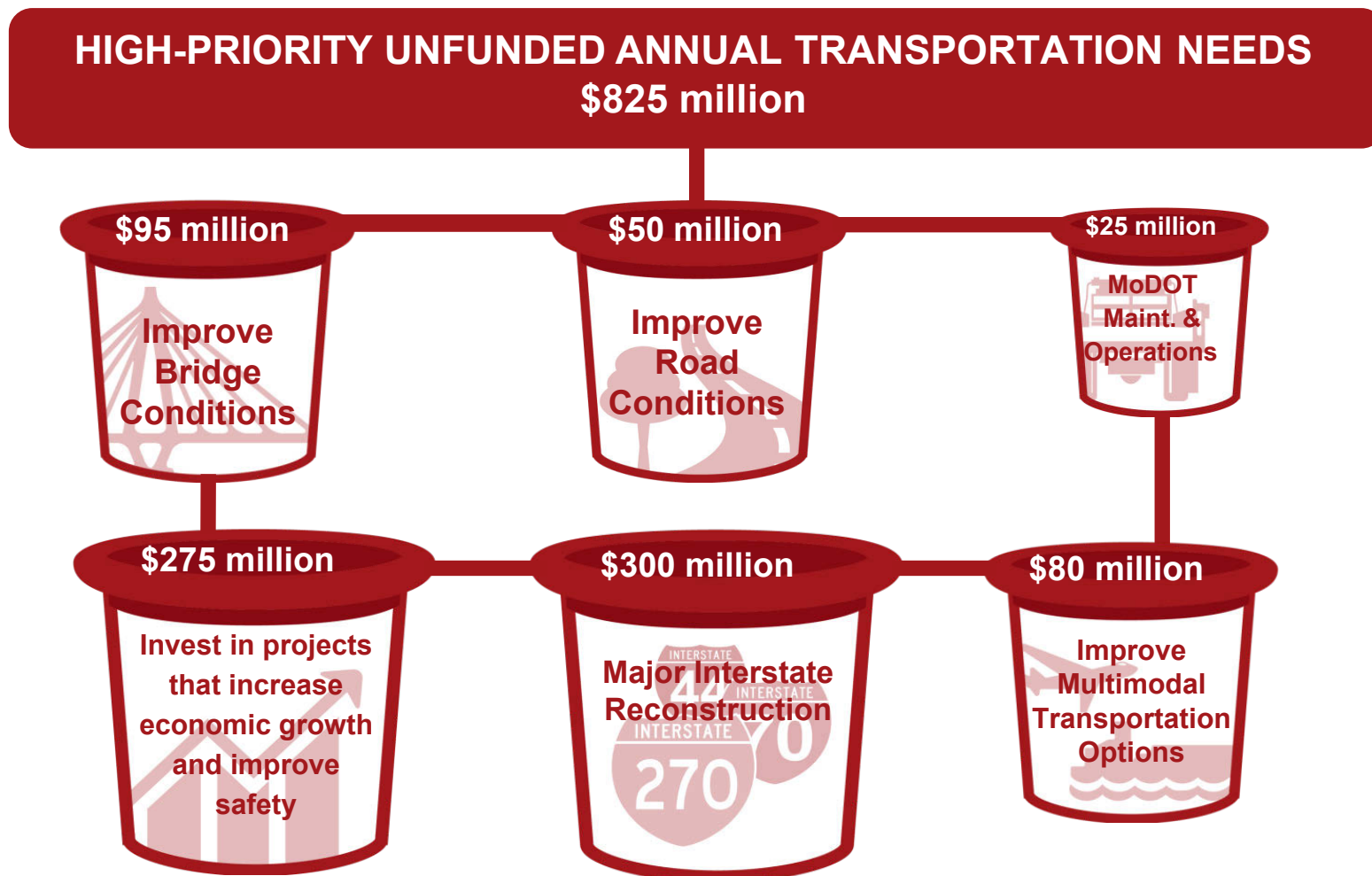
The projects in the Statewide Transportation Improvement Program deliver what taxpayers have asked for – take care of the existing system. While \$5.8 billion of available funding represents a significant investment, many regions will only have adequate funding to maintain current pavement and bridge conditions. While maintaining the status quo is not what Missourians desire, it is not prudent for the state to expand the transportation system in regions that struggle to take care of the existing system.

Each MoDOT district receives funding to invest in Missouri's transportation system. Since 2003, the Missouri Highways and Transportation Commission has used a formula to distribute construction program funds for road and bridge improvements to each of its districts. The formula provides funding for safety improvements, asset management and system improvements.

Through the regional planning prioritization process, MoDOT staff have worked together with our planning partners to develop the following list of high-priority unfunded needs. This continuous effort positions us to clearly communicate the transportation needs of each region of the state and react quickly to potential funding opportunities at both the state and federal levels.

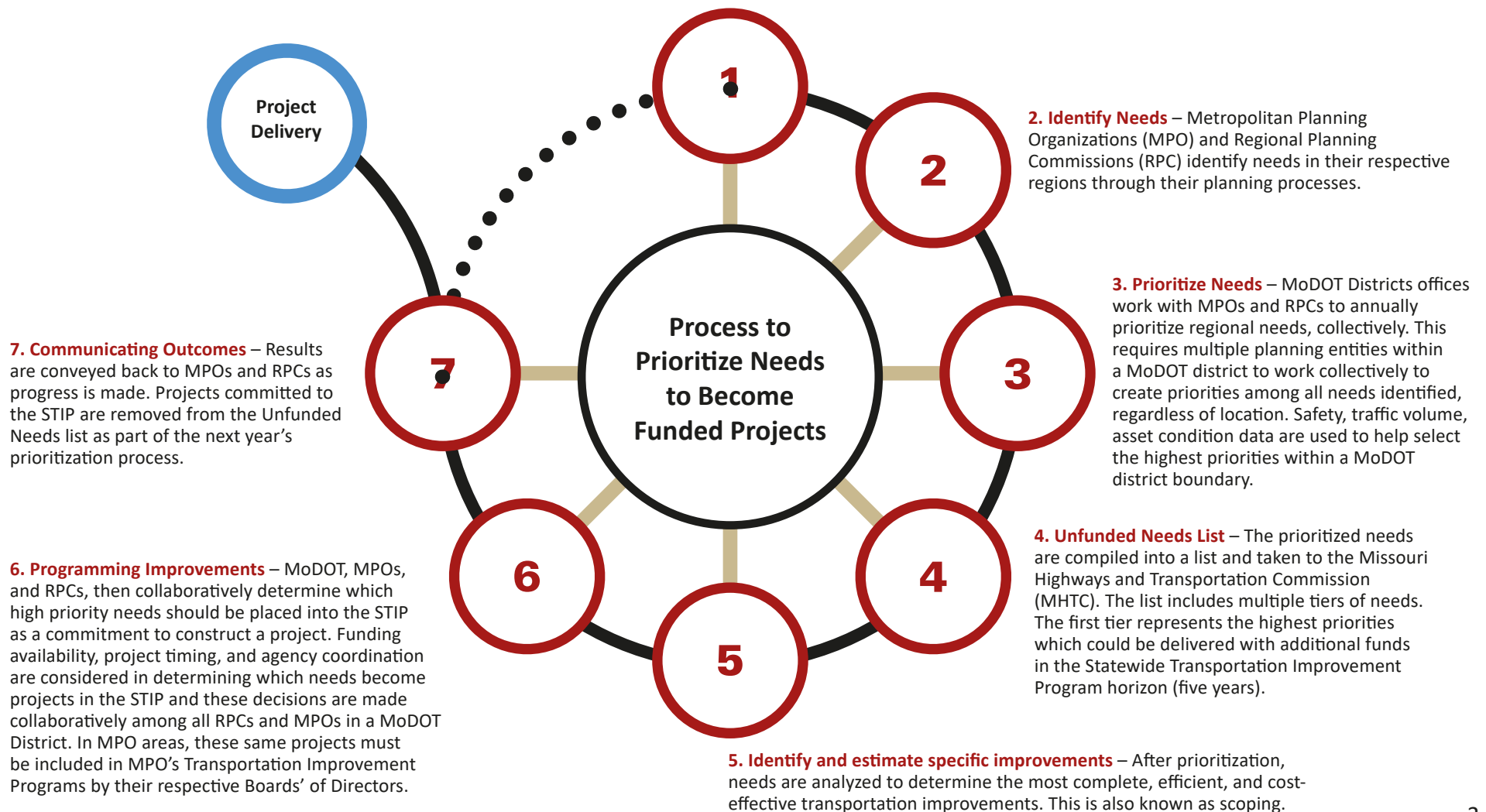
INTRODUCTION

Missourians have repeatedly communicated the number one goal for MoDOT is to take care of the existing system of roads and bridges, so the majority of taxpayer dollars for transportation are invested in asset management projects. Current funding levels are only sufficient to maintain the transportation system in its current condition leaving many transportation needs unfunded. The Citizen's Guide to Transportation Funding identifies \$825 million of high-priority unfunded annual transportation needs under six categories, totaling \$8.25 billion over 10 years.



INTRODUCTION

1. Establish a vision – MoDOT’s vision for its transportation future is best captured by the five goals established by Missourians in the Long-Range Transportation Plan. In priority order, they are: 1) Take care of the transportation system; 2) Keep all travelers safe; 3) Invest in projects that spur economic growth and create jobs; 4) Give Missourians better transportation choices; and 5) Improve reliability and reduce congestion.



INTRODUCTION

\$95 million

Improve
Bridge
Conditions

Improve Bridge Conditions – Missouri has 10,397 bridges of varying sizes. Currently, 893 bridges, or 9%, are in poor condition. Investing an additional \$95 million each year for ten years would decrease the number of poor condition bridges to approximately 300, or 3% of the total bridges.

\$50 million

Improve
Road
Conditions

Improve Road Conditions – Missouri's state highway system consists of approximately 34,000 miles, the seventh largest in the nation. The majority of travel occurs on the 5,542 miles of interstate and major routes – 91% of these routes are in good condition. Minor routes account for 17,334 miles of the system – 80% of these routes are in good condition. The low volume routes, which carry less than 400 cars per day, account for 10,957 miles – 71% of these routes are in good condition. Investing an additional \$50 million each year for ten years would preserve the current condition of interstate, major and minor routes and improve the condition of low volume routes from 71% to 80% good condition. The majority of the investment, \$40 million each year, is needed to improve and maintain low volume routes.

\$25 million

MoDOT
Maint. &
Operations

MoDOT Maintenance & Operations – MoDOT employs 3,000+ field employees throughout the state to operate and maintain the transportation system. Services include pavement repairs, winter operations and mowing roadsides. To continue the current level of service, an additional investment of \$25 million per year is needed to keep pace with inflationary cost increases.

INTRODUCTION

\$275 million

Invest in projects that increase economic growth and improve safety

Invest in projects that increase economic growth and improve safety – These projects include new interchanges, adding shoulders with rumble stripes and adding lanes to the current system. In addition to congestion reduction and economic growth benefits, all of these projects would improve safety so fewer fatalities and serious injuries occur. An additional investment of \$275 million per year would allow MoDOT to begin meeting those needs.

\$300 million

Major Interstate Reconstruction

Major interstate reconstruction – The nation's interstate system is over 60 years old, and Missouri's interstates were built with a 20-year life expectancy. Missouri's interstates need to be reconstructed with added capacity to reliably handle mounting levels of traffic, especially long-haul trucks. An additional \$300 million per year would allow MoDOT to begin tackling this long overdue improvement.

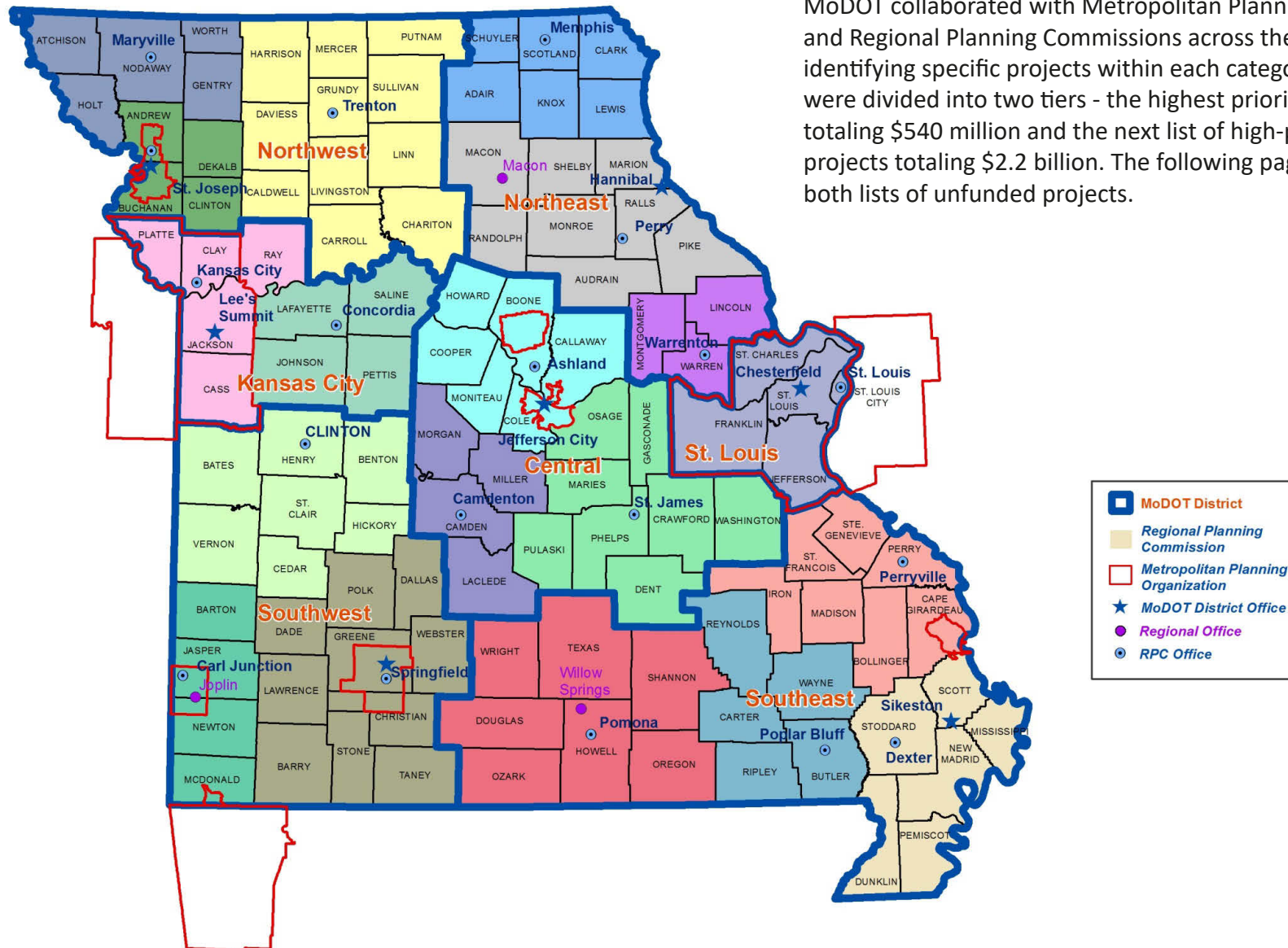
\$80 million

Improve Multimodal Transportation Options

Improve multimodal transportation options – Many Missourians rely on non-highway modes of transportation; however, the state currently invests very little money toward those needs. Missouri's transit systems, railroads, ports, waterways, airports and bicycle/pedestrian facilities could begin to see much needed improvements with an annual investment of \$80 million each year.

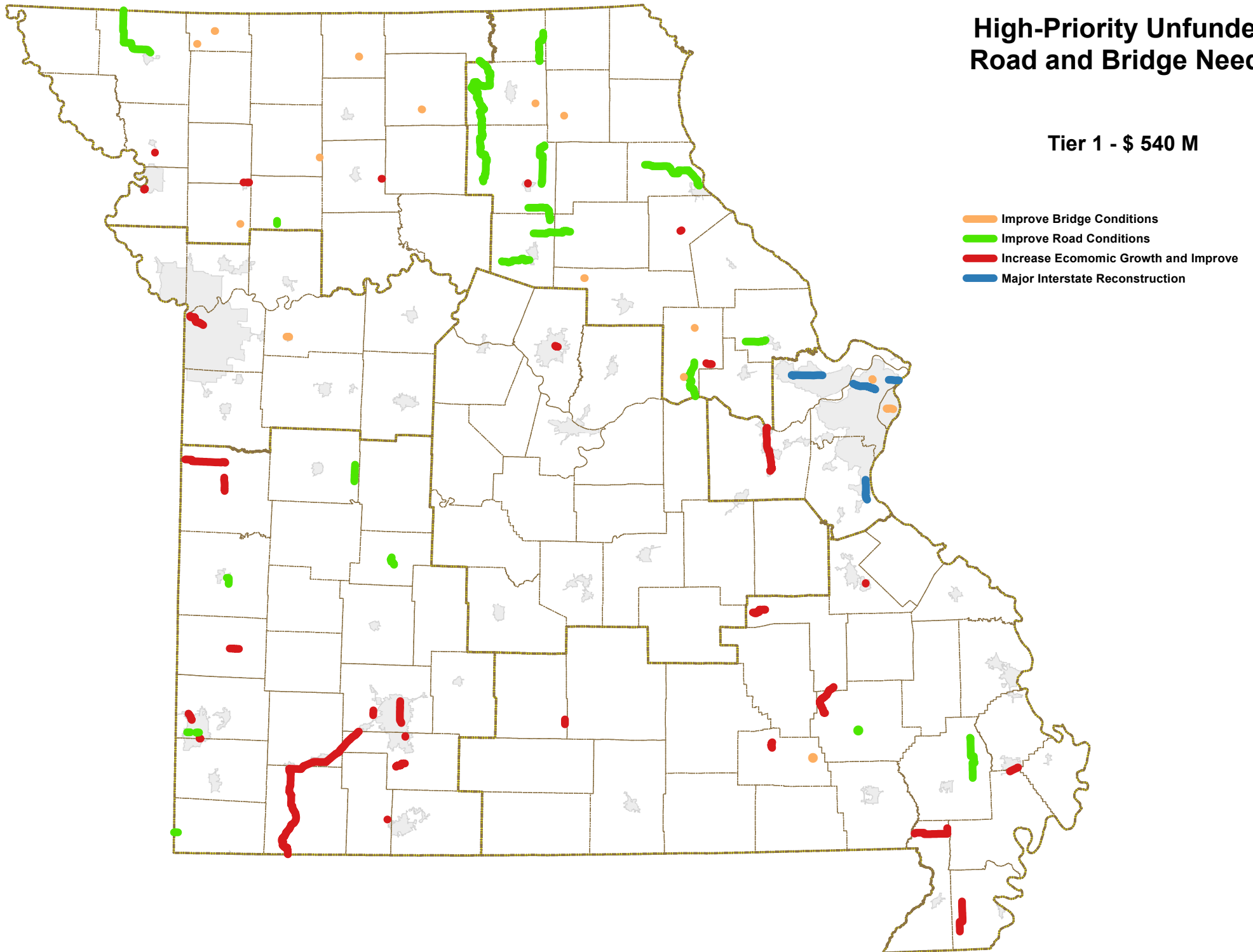
INTRODUCTION

MoDOT collaborated with Metropolitan Planning Organizations and Regional Planning Commissions across the state to begin identifying specific projects within each category. The projects were divided into two tiers - the highest priority tier one totaling \$540 million and the next list of high-priority tier two projects totaling \$2.2 billion. The following pages summarize both lists of unfunded projects.



High-Priority Unfunded Road and Bridge Needs

Tier 1 - \$ 540 M



Tier I - Unfunded Road and Bridge Needs - 2021

District	County	Route	Project Description	Estimated Funding Needed (\$1,000)*	Citizen's Guide Unfunded Needs Category
Northwest	Mercer	E	Replace Br. S0371 over West Honey Creek	\$772	Improve Bridge Condition
Northwest	Sullivan	T	Replace Br. T0928 over East Locust Creek (9)	\$924	Improve Bridge Condition
Northwest	Daviess	190	Replace Br. S0442 over Clear Creek	\$1,082	Improve Bridge Condition
Northwest	Worth	46	Replace Br. J0024 over Marlowe Branch	\$838	Improve Bridge Condition
Northwest	Worth	W	Replace Br. X0142 over West Fork Grand River	\$1,685	Improve Bridge Condition
Northwest	DeKalb	36	Improve Interchange I-35/US 36	\$3,000	Increase economic growth and improve safety
Northwest	Nodaway	71	Resurface and shoulder repairs from Iowa to MO 148	\$5,700	Improve Road Condition
Northwest	Livingston	36	Intersection improvements at Rte. B near Wheeling	\$1,000	Increase economic growth and improve safety
Northwest	Clinton	116	Replace Br. A1058 over I-35	\$1,850	Improve Bridge Condition
Northwest	Buchanan	59	Intersection improvements at MO 752/Rte. U in St. Joseph.	\$6,000	Increase economic growth and improve safety
Northwest	Andrew	Bus. 71	Turning lanes and median improvements for high volume truck entrance	\$1,000	Increase economic growth and improve safety
Northwest	DeKalb	36	Intersection improvements at Ensign Trace Road in Cameron	\$500	Increase economic growth and improve safety
Northeast	Adair, Macon, Randolph, Schuyler	149, K, BB. A, K, Y	Improve pavement conditons on minor routes and low volumes throughout the Northeast District.	\$8,000	Improve Road Condition
Northeast	Adair, Audrain, Knox, Montgomery	V, C, F, K	Improve bridge conditons and widen bridges throughout the Northeast District.	\$3,000	Improve Bridge Condition
Northeast	Montgomery Shelby/Marion Lincoln	19, 168, 47	Pave shoulders at various locaitons throughout the Northeast District.	\$5,000	Improve Road Condition
Northeast	Montgomery	161	Bridge improvement and widening over Elkhorn Creek 1.6 miles south of Rte. CC near Buell. Project involves bridge S0368.	\$900	Improve Bridge Condition
Northeast	Ralls	19	Turn lanes at Mark Twain Schools near Center	\$700	Increase economic growth and improve safety
Northeast	Macon	63/36	Improve interchange at Macon	\$3,000	Increase economic growth and improve safety
Northeast	Audrain, Ralls, Pike	54	Study for updated scope & estimate for shared 4-lane from Mexico to Louisiana	\$1,000	Increase economic growth and improve safety
Northeast	Montgomery	I-70	Updated study for RR overpass near High Hill	\$2,000	Increase economic growth and improve safety
Kansas City Rural	Lafayette	I-70	Interchange Improvements at I-70 and MO 131 in Odessa	\$15,400	Improve Bridge Condition

* Amounts in 2021 Dollars (Uninflated)

Tier I - Unfunded Road and Bridge Needs - 2021

District	County	Route	Project Description	Estimated Funding Needed (\$1,000)*	Citizen's Guide Unfunded Needs Category
Kansas City Urban	Jackson	I-70	Corridor Improvements from Downtown to I-435 - Asset Management and EIS implementation	\$100,970	Increase economic growth and improve safety
Central	Boone	70	Add 2 Directional Ramps and Improve I-70/Rte. 63 Interchange (Partial)	\$62,000	Increase economic growth and improve safety
St. Louis	St. Louis	I-270	Rehabilitate pavement and bridges; add lanes; modify interchanges and outer roads from Rte. 367 to Rte. H (Partial)	\$33,900	Major interstate reconstruction
St. Louis	Jefferson	I-55	Rehabilitate pavement and bridges, capacity improvements, and reconfigure interchanges from Rte. Z to US 67 (Partial)	\$54,200	Major interstate reconstruction
St. Louis	St. Charles	I-64	I-64: Reconfigure interchange and rehabilitate bridges at I-70. (Partial)	\$22,600	Major interstate reconstruction
St. Louis	St. Louis City	I-64	Rehabilitate bridges and ramp reconfiguration from Kingshighway to Jefferson (Partial)	\$38,400	Improve Bridge Condition
St. Louis	St. Louis	RP IS 270 E to IS 170 S	Replace bridge over Pershall Rd. Project involves bridge A3808.	\$1,600	Improve Bridge Condition
St. Louis	Franklin	Rte. 47	Improve safety and capacity improvements from St. Clair to Washington (Partial)	\$22,600	Increase economic growth and improve safety
St. Louis	St. Louis	I-70	Reconfigure STL airport access, replace bridges, reconfigure interchanges from Rte. 141 to I-170. (Partial)	\$22,600	Major interstate reconstruction
Southwest Rural	Barry, Christian, Greene, Lawrence	60, 37	Safety and intersection improvements at various locations from Republic to Monett, and from Monett to the Arkansas state line.	\$2,000	Increase economic growth and improve safety
Southwest Rural	Jasper	66	Pavement rehabilitation, signal replacements on Seventh Street in Joplin from St. Louis Avenue to Rangeline Road.	\$7,172	Improve Road Condition
Southwest Rural	Jasper	66	Pavement rehabilitation, signal replacements on Seventh Street in Joplin from Schifferdecker Ave. to Maiden Lane	\$7,074	Improve Road Condition
Southwest Rural	Jasper	171	Intersection and operational improvements from Rte. Z to Fir Road in Carl Junction.	\$4,000	Increase economic growth and improve safety
Southwest Rural	Christian	EE	Safety and pavement Improvements from Rte. 160 in Highlandville to Rte. 65.	\$4,510	Increase economic growth and improve safety
Southwest Rural	Jasper	FF	Railroad crossing grade separation and intersection improvements on 32nd Street in Joplin.	\$16,139	Increase economic growth and improve safety
Southwest Rural	Stone	76	Intersection improvements at Indian Point Road.	\$2,000	Increase economic growth and improve safety

* Amounts in 2021 Dollars (Uninflated)

Tier I - Unfunded Road and Bridge Needs - 2021

District	County	Route	Project Description	Estimated Funding Needed (\$1,000)*	Citizen's Guide Unfunded Needs Category
Southwest Rural	Bates	18, Loop 49	Pavement improvements from Rte. Y to I-49 in Adrian and on Loop 49 from Passaic to Rte. 52 in Butler.	\$1,983	Increase economic growth and improve safety
Southwest Rural	Barton	160	Pavement improvements from I-49 in Lamar Heights to County Road 30th Lane east of Lamar.	\$762	Increase economic growth and improve safety
Southwest Rural	Henry	PP	Pavement improvements from Route C in Roseland to Route 7 in Tightwad	\$567	Improve Road Condition
Southwest Rural	Hickory	254	Pavement improvements from Route 64 to Route 54 in Hermitage.	\$550	Improve Road Condition
Southwest Rural	Vernon	K	Pavement improvements from I-49 to County Road 1800 near Nevada.	\$560	Improve Road Condition
Southwest Rural	McDonald	O	Pavement improvements from the Oklahoma state line to Rte. 43	\$290	Improve Road Condition
Southwest Urban	Greene	13	Phase I Kansas Expressway capital improvements from Bennett Street to Route 60 (James River Freeway).	\$5,000	Improve Road Condition
Southwest Urban	Greene	MM	Capital improvements from I-44 to Rte. 360 (James River Freeway) in Republic	\$9,208	Increase economic growth and improve safety
Southwest Urban	Christian	65, CC	Operational improvements at Rtes. CC/J interchange	\$2,300	Increase economic growth and improve safety
Southwest Urban	Various	Various	Signal replacement program in the urban Southwest District.	\$5,000	Increase economic growth and improve safety
Southwest Urban	Greene	Loop 44, Bus. 65	Glenstone Avenue safety improvements at various locations from I-44 to Rte. 60 (James River Freeway).	\$750	Increase economic growth and improve safety
Southeast	Carter	D	Add rumblestrips from County Road 123 to Bus 60.	\$720	Increase economic growth and improve safety
Southeast	Wayne	A	Culvert replacement 0.5 miles west of Rte. 67.	\$832	Improve Road Condition
Southeast	Stoddard	N	Pavement resurfacing from Rte. 91 to Rte. 60.	\$1,709	Improve Road Condition
Southeast	Dunklin	Bus. 25	Add center turn lanes from Rte. 25 south to Rte. 62.	\$1,628	Increase economic growth and improve safety
Southeast	Wright	95	Capital improvements from Red Spring Road to Bus. 60 in Mountain Grove.	\$9,633	Increase economic growth and improve safety
Southeast	Cape Girardeau	I-55	Capacity improvements at Exit 93.	\$5,000	Increase economic growth and improve safety
Southeast	Iron	32	Safety improvements from the west intersection of Rte. 49 to the east intersection of Rte. 49.	\$3,584	Increase economic growth and improve safety
Southeast	St. Francois	67	Interchange improvements at Rte. 32 in Leadington.	\$8,000	Increase economic growth and improve safety
Southeast	Carter	N	Bridge replacement over Middle Brushy Creek.	\$919	Improve Bridge Condition

* Amounts in 2021 Dollars (Uninflated)

Tier I - Unfunded Road and Bridge Needs - 2021					
District	County	Route	Project Description	Estimated Funding Needed (\$1,000)*	Citizen's Guide Unfunded Needs Category
Southeast	Wayne	49	Add rumblestripes from Rte. 143 to the north intersection of Rte. 34.	\$3,839	Increase economic growth and improve safety
Southeast	New Madrid	60	Access improvements to convert to freeway from I-55 to Rte. 61.	\$6,850	Increase economic growth and improve safety
Southeast	St. Francois	D	Add center turn lane from Hillsoboro Road to Rte. 32.	\$2,000	Increase economic growth and improve safety
Southeast	Dunklin	J	Add rumblestripes from Rte. 53 to Bus. 25.	\$1,625	Increase economic growth and improve safety
Southeast	Scott	N	Intersection improvements at County Road 305.	\$430	Increase economic growth and improve safety
Southeast	Pemiscot	C	Pavement resurfacing from Rte. 412 to Rte. 164.	\$773	Increase economic growth and improve safety
Tier I Prioritized Needs - Statewide Total:				\$539,628	

* Amounts in 2021 Dollars (Uninflated)

SUMMARY

Tier 1 High-Priority Unfunded Road and Bridge Needs - 2021

District	Improve Bridge Condition	Improve Road Condition	Major Interstate Reconstruction	Increase Economic Growth and Improve Safety	Total
Northwest	\$7,151	\$5,700		\$11,500	\$24,351
Northeast	\$3,900	\$13,000		\$6,700	\$23,600
Kansas City Rural	\$15,400				\$15,400
Kansas City Urban				\$100,970	\$100,970
Central				\$62,000	\$62,000
St. Louis	\$40,000		\$133,300	\$22,600	\$195,900
Southwest Rural		\$16,213		\$31,394	\$47,607
Southwest Urban		\$5,000		\$17,258	\$22,258
Southeast	\$919	\$2,541		\$44,082	\$47,542
Total	\$67,370	\$42,454	\$133,300	\$296,504	\$539,628

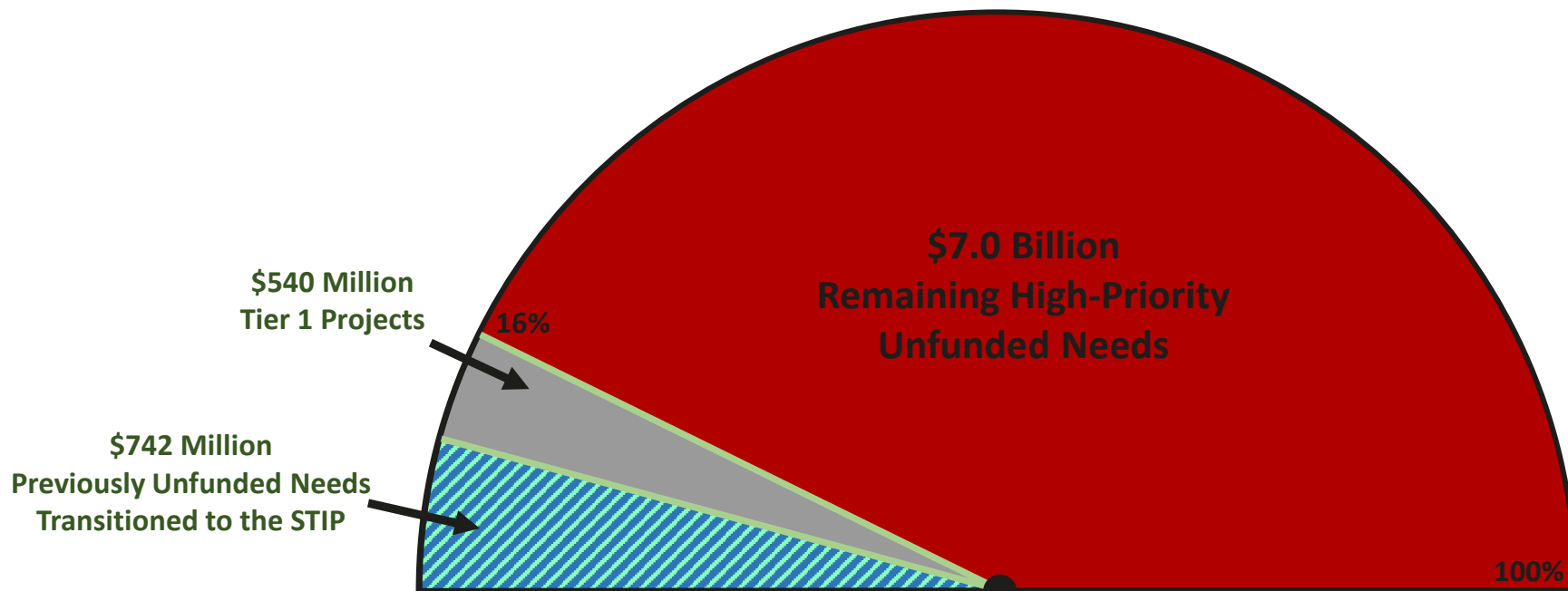
Amounts in \$1,000 in 2021 Dollars (Uninflated)

SUMMARY

10-Year Unfunded Needs Remaining after Tier 1

Tier 1

Category	Impact
Improve road condition	215 miles
Improve bridge condition	29 bridges
Major Interstate Reconstruction	29 miles
10 Year Economic Output	\$1.3 billion
Annual Jobs Created	430

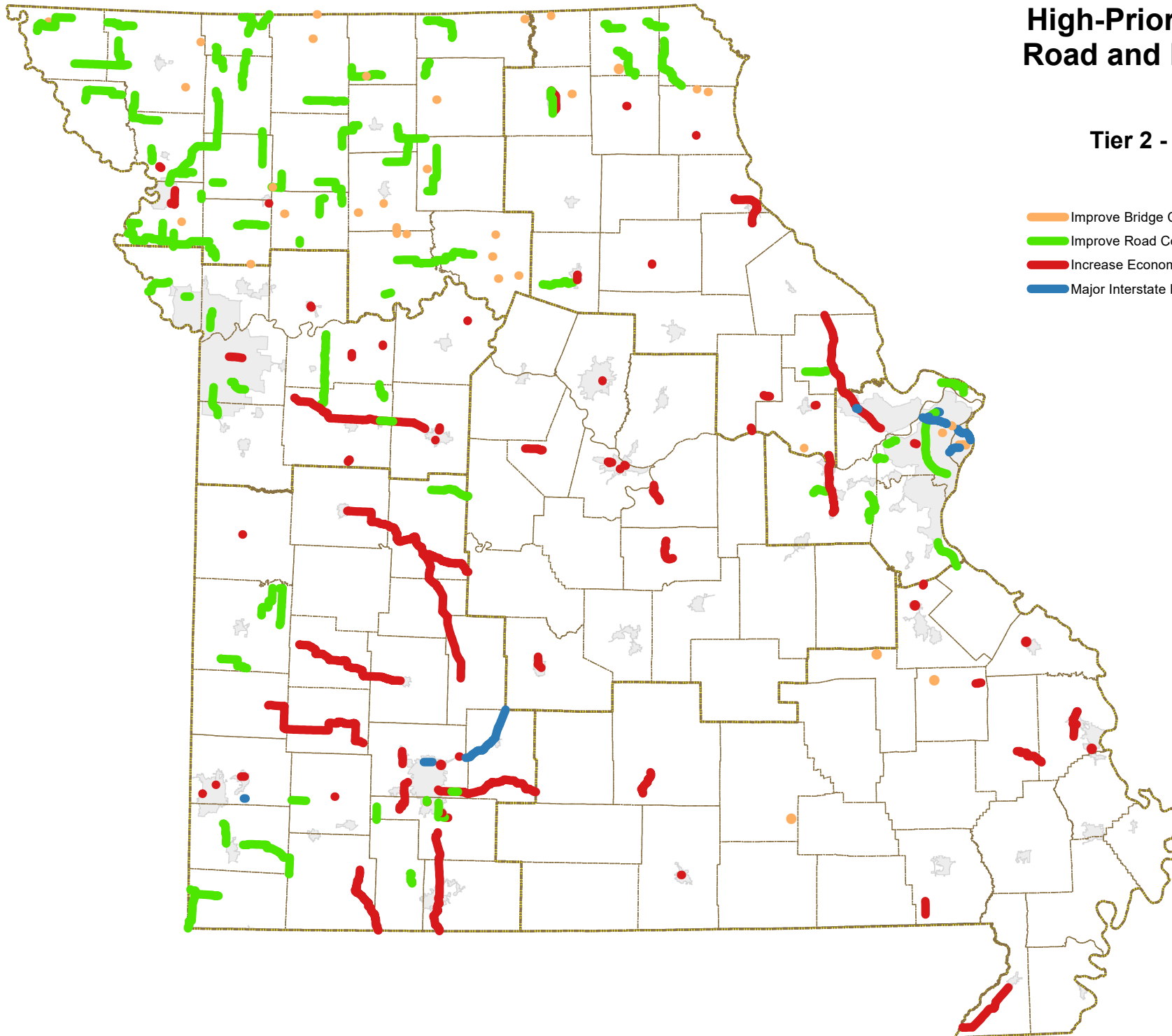


\$8.25 Billion High-Priority Unfunded Needs

High-Priority Unfunded Road and Bridge Needs

Tier 2 - \$2.2 Billion

- Improve Bridge Conditions
- Improve Road Conditions
- Increase Economic Growth and Improve Safety
- Major Interstate Reconstruction



Tier II - Unfunded Road and Bridge Needs - 2021

District	County	Route	Project Description	Estimated Funding Needed (\$1,000)*	Citizen's Guide Unfunded Needs Category
Northwest	Andrew, Buchanan	169	Resurface from MO 31 to I-29	\$1,609	Improve Road Condition
Northwest	Buchanan	116	Resurface from US 59 to MO 371	\$1,150	Improve Road Condition
Northwest	Carroll, Chariton	M	Resurface from US 65 to Rte. F	\$1,817	Improve Road Condition
Northwest	Harrison	MM	Resurface from MO 13 to Rte. CC	\$797	Improve Road Condition
Northwest	Mercer	D	Resurface from US 136 to Rte. 65	\$810	Improve Road Condition
Northwest	Daviess	190	Resurface from MO 6 to MO 146	\$751	Improve Road Condition
Northwest	Buchanan, Clinton	116	Resurface from MO 371 to US 169	\$1,150	Improve Road Condition
Northwest	Gentry, DeKalb	169	Resurface from Stanberry to MO 31	\$1,380	Improve Road Condition
Northwest	Nodaway, Andrew	Y	Resurface from Nodaway County to US 71	\$1,025	Improve Road Condition
Northwest	Andrew	CC	Resurface from Route K to US 59	\$265	Improve Road Condition
Northwest	Atchison	B	Resurface from Rte. A to US 59	\$1,025	Improve Road Condition
Northwest	Nodaway	C	Resurface from US 71 to Rte. UU	\$577	Improve Road Condition
Northwest	Nodaway	PP	Resurface from US 136 to MO 46	\$523	Improve Road Condition
Northwest	Holt	C	Resurface from US 59 to MO 113	\$998	Improve Road Condition
Northwest	Mercer	D	Replace Br. X0123 over Muddy Creek (8)	\$556	Improve Bridge Condition
Northwest	Chariton	PP	Replace Br. N0858 over Middle Fork Chariton River (10)	\$892	Improve Bridge Condition
Northwest	Putnam	E	Resurface from Rte. M to US 136	\$812	Improve Road Condition
Northwest	Sullivan	K	Resurface from Rte. EE to Rte. E	\$356	Improve Road Condition
Northwest	Livingston, Grundy	K	Resurface from US 65 to Rte. E	\$874	Improve Road Condition
Northwest	Grundy, Linn	E	Resurface from MO 6 to MO 139	\$786	Improve Road Condition
Northwest	Linn	Y	Resurface From MO 139 to Rte. DD	\$1,022	Improve Road Condition
Northwest	Chariton	D	Replace Br. T0459 over Mussel Fork Creek (13)	\$932	Improve Bridge Condition
Northwest	Harrison	69	Replace Br. L0267 over Zadio Branch (19)	\$273	Improve Bridge Condition
Northwest	Worth	Y	Resurface from MO 46 to end maintenance	\$310	Improve Road Condition
Northwest	Worth	PP	Resurface from US 169 to end maintenance	\$197	Improve Road Condition
Northwest	Worth	M	Resurface from US 169 to Rte. C	\$503	Improve Road Condition
Northwest	Worth	O	Resurface from Iowa to Rte. T	\$362	Improve Road Condition
Northwest	Worth, Gentry	N	Resurface from Rte. M (Worth Co.) to US 136	\$790	Improve Road Condition
Northwest	Worth, Gentry	U	Resurface from Rte. W (Worth Co.) to Rte. O	\$573	Improve Road Condition
Northwest	Putnam	N	Replace Br. P0103 over Turkey Creek (24)	\$550	Improve Bridge Condition
Northwest	Sullivan	PP	Replace Br. P0934 over West Locust Creek (26)	\$820	Improve Bridge Condition
Northwest	Buchanan	H	Replace Br. K0794 over Platte River Overflow (28)	\$650	Improve Bridge Condition
Northwest	Caldwell, Daviess	M	Resurface from US 36 to MO 13	\$901	Improve Road Condition
Northwest	Caldwell	B	Resurface from Nettleton to Rte. U	\$402	Improve Road Condition
Northwest	DeKalb	O	Resurface from Rte. N to MO 31	\$203	Improve Road Condition
Northwest	Gentry, DeKalb	D	Resurface from Rte. Z to MO 6	\$671	Improve Road Condition
Northwest	Daviess	BB	Resurface from US 69 (s) to US 69 (n)	\$474	Improve Road Condition

* Amounts in 2021 Dollars (Uninflated)

Tier II - Unfunded Road and Bridge Needs - 2021

District	County	Route	Project Description	Estimated Funding Needed (\$1,000)*	Citizen's Guide Unfunded Needs Category
Northwest	Caldwell	U	Replace Br. P0428 over Shoal Creek (29)	\$1,415	Improve Bridge Condition
Northwest	Chariton	5	Replace Br. J0685 over Cottonwood Creek (30)	\$893	Improve Bridge Condition
Northwest	Chariton	KK	Replace Br. P0328 over Puzzle Creek (31)	\$673	Improve Bridge Condition
Northwest	Daviess	BB	Replace Br. R0237 over I-35 (32)	\$1,781	Improve Bridge Condition
Northwest	Andrew	I-29	I-29/US 71 Interchange Improvements	\$6,250	Increase economic growth and improve safety
Northwest	Buchanan	KK	Resurface from US 59 (w) to US 59 (e)	\$280	Improve Road Condition
Northwest	Buchanan	AB	Resurface from MO 6 to US 36	\$110	Improve Road Condition
Northwest	Buchanan	CC	Resurface from MO 371 to MOI 116	\$360	Improve Road Condition
Northwest	Clinton	H	Resurface from MO 33 to US 69	\$595	Improve Road Condition
Northwest	Clinton	O	Resurface from US 169 to end of maintenance	\$394	Improve Road Condition
Northwest	Nodaway	NN	Replace Br. P0981 over Platte River (34)	\$1,608	Improve Bridge Condition
Northwest	Livingston	65	Replace Br. G0861 over Shoal Creek Overflow (37)	\$3,267	Improve Bridge Condition
Northwest	Carroll	65	Replace Br. K0057 over Mound Creek (38)	\$1,431	Improve Bridge Condition
Northwest	Atchison	275	Replace Br. J0222 over East Fork High Creek (39)	\$1,076	Improve Bridge Condition
Northwest	Nodaway	VV	Replace Br. R0014 over Platte River (43)	\$2,024	Improve Bridge Condition
Northwest	Carroll	J	Replace Br. T0368 over Bridge Creek (49)	\$610	Improve Bridge Condition
Northwest	Livingston	D	Replace Br. T0326 over Rattlesnake Creek (50)	\$746	Improve Bridge Condition
Northwest	Buchanan	I-29	I-29/US 169 interchange Improvements	\$23,000	Increase economic growth and improve safety
Northwest	Buchanan	AC	Improve US 36 Interchange	\$8,000	Increase economic growth and improve safety
Northwest	Atchison, Nodaway	46	Resurface from US 59 to MO 13	\$1,300	Improve Road Condition
Northwest	Linn	139	Replace Br. T0377 over Parsons Creek	\$559	Improve Bridge Condition
Northwest	Harrison	N	Bridge improvements to Br. A2291 over I-35	\$1,145	Improve Bridge Condition
Northwest	Clinton	BB	Interchange improvements at Rte. BB in Cameron	\$5,500	Increase economic growth and improve safety
Northwest	Andrew	O	Resurface from Rte. D to Rte. Z	\$400	Improve Road Condition
Northwest	Buchanan	Y	Resurface from Rte. DD to Platte County	\$400	Improve Road Condition
Northwest	Clinton	PP	Improve Br. A0996 over I-35	\$1,915	Improve Bridge Condition
Northwest	Carroll	10	Raise 2-mile section of roadway mitigate frequent flooding	\$4,000	Improve Road Condition
Northeast	Lincoln	47	Add paved shoulders from Troy to Hawk Point	\$13,200	Improve Road Condition
Northeast	Scotland, Lewis, Randolph, Scotland, Scotland, Clark	B, A, BB, M, U, A	Improve pavement conditions on minor routes and low volumes throughout the Northeast District.	\$6,190	Improve Road Condition

* Amounts in 2021 Dollars (Uninflated)

Tier II - Unfunded Road and Bridge Needs - 2021

District	County	Route	Project Description	Estimated Funding Needed (\$1,000)*	Citizen's Guide Unfunded Needs Category
Northeast	Warren, Adair, Lewis, Lewis, Scotland, Schuyler	94, 11, E, E, W, M	Improve bridge conditons and widen bridges throughout the Northeast District.	\$4,000	Improve Bridge Condition
Northeast	Montgomery	I-70	Interstate mobility improvements at RR near High Hill.	\$35,300	Increase economic growth and improve safety
Northeast	Montgomery	19	Study to determine base stability and flooding resiliency near McKirtrick.	\$100	Increase economic growth and improve safety
Northeast	Warren	I-70	Construct interchange at Stracks Church Rd between Warrenton and Wright City	\$18,000	Increase economic growth and improve safety
Northeast	Marion, Ralls	61	Update the Hannibal Expressway study	\$500	Increase economic growth and improve safety
Northeast	Warren	47	Hydraulic study for causeway north of Washington	\$300	Increase economic growth and improve safety
Northeast	Adair	63	Scoping for safety improvements outside of Kirksville	\$100	Increase economic growth and improve safety
Northeast	Lincoln	61	Intersection improvements at Old Alexandria and at the intersection of K/W	\$11,000	Increase economic growth and improve safety
Northeast	Lincoln	61	Eliminate at-grade crossing on U.S. 61 in Lincoln County/Intersection improvements	\$12,000	Increase economic growth and improve safety
Northeast	Monroe	15	Intersection improvements south of Paris	\$390	Increase economic growth and improve safety
Northeast	Randolph	Bus. 63	Add center turn lane from EE to M in Moberly	\$9,500	Increase economic growth and improve safety
Northeast	Lewis	6	Add turn lane at Highland High School near Ewing	\$590	Increase economic growth and improve safety
Northeast	Knox	6	Turn lanes at school/nursing home near Edina	\$820	Increase economic growth and improve safety
Northeast	Lincoln	61	Construct remaining outer roads from S. Lincoln Dr. in Troy to St. Charles Co.	\$14,400	Increase economic growth and improve safety
Kansas City Rural	Saline	240	Intersection Improvements at MO 240 and Rte C in Slater	\$714	Increase economic growth and improve safety
Kansas City Rural	Ray	13	Traffic Signal Improvements on MO 13 at Main St. and South St. in Richmond	\$595	Increase economic growth and improve safety
Kansas City Rural	Lafayette	13	Add two way left turn lane from Fairground Avenue to Rte. MM in Higginsville.	\$4,640	Increase economic growth and improve safety
Kansas City Rural	Johnson	13	Intersection improvements at Rte. 13 and Rte. 2	\$3,480	Increase economic growth and improve safety

* Amounts in 2021 Dollars (Uninflated)

Tier II - Unfunded Road and Bridge Needs - 2021

District	County	Route	Project Description	Estimated Funding Needed (\$1,000)*	Citizen's Guide Unfunded Needs Category
Kansas City Rural	Johnson, Lafayette	O/M	Add shoulders and resurfacing from City of Lexington to Rte. 50.	\$13,224	Improve Road Condition
Kansas City Rural	Johnson	23	Blackwater Bridge flood remediation	\$13,920	Improve Road Condition
Kansas City Rural	Pettis	65	Intersection improvements at Rte. 65 and Rte. B in Sedalia.	\$4,060	Increase economic growth and improve safety
Kansas City Rural	Johnson, Pettis	50	Intersection improvements along the corridor	\$12,586	Increase economic growth and improve safety
Kansas City Rural	Pettis	65	Corridor improvements at Rte. 765 and Rebar Road in Sedalia	\$8,120	Increase economic growth and improve safety
Kansas City Rural	Lafayette	23	Intersection improvements at Rte. 20 and Rte. 23	\$3,480	Increase economic growth and improve safety
Kansas City Rural	Johnson	Bus 13	Interchange improvements at Business 13 and Rte. 50.	\$1,160	Increase economic growth and improve safety
Kansas City Urban	Jackson	I-70	Corridor Improvements from I-435 to I-470	\$180,000	Increase economic growth and improve safety
Kansas City Urban	Clay	1	Pavement rehabilitation	\$27,142	Improve Road condition
Kansas City Urban	Jackson	50	Pavement rehabilitation	\$38,070	Improve Road condition
Kansas City Urban	Platte	D	Pavement rehabilitation	\$10,857	Improve Road condition
Kansas City Urban	Jackson, Cass	I-49	Pavement rehabilitation	\$90,475	Improve Road condition
Kansas City Urban	Platte	92	Pavement rehabilitation	\$16,286	Improve Road Condition
Central	Moniteau	50	Shared 4 Lanes from California to Tipton.	\$24,336	Increase economic growth and improve safety
Central	Osage	63	Estimated as Shared 4 Lane from Rte. 50 to S/O Westphalia	\$33,702	Increase economic growth and improve safety
Central	Cole	50	Reconfigure interchange to address close outer road spacing; widen westbound off-ramp to improve capacity; incorporate pedestrian facilities (Rte. 50/Truman Blvd/Country Club Dr)	\$11,765	Increase economic growth and improve safety
Central	Maries	63	Estimated as Shared 4 Lane from South of Maries CRD 332 to South of Maries CRD 325 near Vienna	\$35,177	Increase economic growth and improve safety
Central	Boone	63	Rte. 63/Rte. WW Interchange Reconstruction	\$11,154	Increase economic growth and improve safety

* Amounts in 2021 Dollars (Uninflated)

Tier II - Unfunded Road and Bridge Needs - 2021

District	County	Route	Project Description	Estimated Funding Needed (\$1,000)*	Citizen's Guide Unfunded Needs Category
Central	Cole	50	Rex Whitton Expressway Improvements	\$47,027	Increase economic growth and improve safety
Central	Cole	54	Rte. 54/Ellis BLVD/Southwest BLVD Interchange	\$24,000	Increase economic growth and improve safety
Central	Laclede	5	New roadway from I-44 to Rte. 5 at Lebanon.	\$26,638	Increase economic growth and improve safety
St. Louis	St. Louis City	I-44	Reconfigure interchanges and replace bridge from Hampton to Vandeventer.	\$45,200	Major interstate reconstruction
St. Louis	St. Louis City	I-70	Reconfigure interchanges and safety enhancements from St. Louis City limit to Benton Street	\$168,000	Major interstate reconstruction
St. Louis	Franklin	47	Improve safety and capacity from St. Clair to Washington	\$45,200	Increase economic growth and improve safety
St. Louis	St. Louis	I-70	Reconfigure STL airport access, replace bridges, reconfigure interchanges from Rte. 141 to I-170. (Partial)	\$156,000	Major interstate reconstruction
St. Louis	St. Louis	I-64	Reconfigure Interchange at Rte. 141.	\$5,700	Increase economic growth and improve safety
St. Louis	St. Louis	I-270	Resurface pavement from I-55 to McDonnell Blvd.	\$28,300	Improve Road Condition
St. Louis	St. Louis	I-270	Capacity improvements from Rte.100 to I-64.	\$35,000	Increase economic growth and improve safety
St. Louis	St. Louis	I-70	Reconfigure interchange and rehabilitate bridge at Bermuda Rd.	\$17,000	Improve Bridge Condition
St. Louis	St. Louis	I-170	Reconfigure interchange and rehabilitate bridge at Rte. D.	\$28,300	Improve Bridge Condition
St. Louis	St. Charles	I-64	Capacity Improvements from I-70 to Rte. K.	\$40,700	Increase economic growth and improve safety
St. Louis	St. Charles	61	Safety and operational improvements from Lincoln Co. to I-64. (Partial)	\$36,200	Increase economic growth and improve safety
St. Louis	St. Charles	I-64	Reconfigure interchange and bridge rehabilitation at I-70, US 61 Interchange. (Partial)	\$18,100	Major interstate reconstruction
St. Louis	St. Louis	I-270	Reconfigure interchange and rehabilitate bridges at Rte. D / Rte. 364 interchange. (Partial)	\$17,000	Improve Bridge Condition
St. Louis	St. Louis	I-270	Reconfigure interchange and bridge rehabilitation (Partial) at Rte. 180.	\$37,300	Major interstate reconstruction
St. Louis	St. Louis City	I-64	Rehabilitate bridges and ramp reconfiguration from Kingshighway to Jefferson (Partial)	\$38,400	Improve Bridge Condition
St. Louis	St. Louis	I-270	Add auxiliary lanes, replace bridges, rehabilitate pavement from Rte. 370 to US 67	\$18,800	Major interstate reconstruction

* Amounts in 2021 Dollars (Uninflated)

Tier II - Unfunded Road and Bridge Needs - 2021

District	County	Route	Project Description	Estimated Funding Needed (\$1,000)*	Citizen's Guide Unfunded Needs Category
St. Louis	St. Louis	T	Reconstruct pavement from St. Louis Co. Line to Rte. 100.	\$7,700	Improve Road Condition
St. Louis	St. Louis	CC	Reconstruct pavement from Rte. 109 to Long Rd.	\$7,600	Improve Road Condition
St. Louis	Jefferson	61	Rehabilitate pavement from US 67 to St. Genevieve Co. Line.	\$4,100	Improve Road Condition
St. Louis	Franklin	50	US 50: Reconstruct concrete pavement from Rte. EE to Independence Rd.	\$3,500	Improve Road Condition
St. Louis	Franklin	50	Reconstruct concrete pavement from Rte. Y to Rte. C.	\$3,300	Improve Road Condition
St. Louis	Franklin	HH	Reconstruct pavement from Rte. 30 to Rte. O.	\$12,100	Improve Road Condition
St. Louis	St. Charles	94	Reconstruct pavement from Rte. H to US 67.	\$9,900	Improve Road Condition
Southwest Rural	Benton, Henry	7	Various curve and intersection improvements from Tightwad to Warsaw and from Rte. 65 to Camden County	\$4,000	Increase economic growth and improve safety
Southwest Rural	Webster, Greene	60	Safety, access, and intersection improvements from Rte. 125 in Rogersville to east of Rte. K in Seymour	\$20,000	Increase economic growth and improve safety
Southwest Rural	Jasper	I-44	Ramp improvements at I-49 in Fidelity.	\$44,215	Major interstate reconstruction
Southwest Rural	Webster	I-44	Climbing lanes, pavement rehabilitation on the westbound lanes in Webster County.	\$7,000	Major interstate reconstruction
Southwest Rural	Cedar, Polk	32	Capacity and geometric improvements from Stockton to Bolivar.	\$2,000	Increase economic growth and improve safety
Southwest Rural	Benton, Hickory, Dallas	65	Capacity and intersection improvements from Warsaw to Buffalo.	\$4,000	Increase economic growth and improve safety
Southwest Rural	Various	Various	Signal replacement program in the rural Southwest District.	\$1,000	Improve Road Condition
Southwest Rural	Newton	175, 86	Pavement improvements from I-49 to Route 86 in Neosho, and on Route 86 from Route 60 to Route 76.	\$1,953	Improve Road Condition
Southwest Rural	Jasper	171	Intersection improvements on McArthur Drive at Loop 49 (Madison Avenue) in Webb City.	\$11,000	Increase economic growth and improve safety
Southwest Rural	Taney	NEW	New corridor from Rte. 65 to Rte. BB near Hollister.	\$21,555	Increase economic growth and improve safety
Southwest Rural	Barry, Stone	39	Pavement improvements from Rte. EE to the Arkansas state line.	\$3,515	Increase economic growth and improve safety
Southwest Rural	Jasper	96	Rebuild pavement, sidewalks, signals and lighting on Central Street in Carthage.	\$8,675	Increase economic growth and improve safety
Southwest Rural	Christian, Taney	65	Safety and operational improvements from Rte. EE near Ozark to the Arkansas state line.	\$20,000	Increase economic growth and improve safety

* Amounts in 2021 Dollars (Uninflated)

Tier II - Unfunded Road and Bridge Needs - 2021

District	County	Route	Project Description	Estimated Funding Needed (\$1,000)*	Citizen's Guide Unfunded Needs Category
Southwest Rural	Barton, Dade	160	Intersection and safety improvements at various locations from east of Route A 4.5 miles east of Lamar to Rtes. MM/FF 2.5 miles east of Everton.	\$2,000	Increase economic growth and improve safety
Southwest Rural	Jasper, Newton	New	Design and Environmental Study for new west corridor in the Joplin metropolitan area.	\$1,000	Increase economic growth and improve safety
Southwest Rural	Bates	52	Replace railroad overpass, add sidewalk on Fort Scott Street from Fran St. to Delaware St. in Butler	\$20,000	Increase economic growth and improve safety
Southwest Rural	Jasper	P	Intersection improvements at Schifferdecker Road in Joplin.	\$3,000	Increase economic growth and improve safety
Southwest Rural	Lawrence	Loop 44	Intersection improvements at East Industrial Road in Mount Vernon.	\$2,000	Increase economic growth and improve safety
Southwest Rural	Jasper	I-44	Pavement rehabilitation from 3.0 miles east of Sarcoxie to 1.0 mile west of Rte. 97	\$5,300	Improve Road Condition
Southwest Rural	Stone, Christian	413, 265	Pavement improvements from Rte. 60 near Billings to Rte 265 and from Rte. 248 East in Reeds Spring to Rte. 13 in Branson West	\$1,043	Improve Road Condition
Southwest Rural	Benton	52	Pavement improvements from Rte. 65 to Blackberry Patch Road	\$1,745	Improve Road Condition
Southwest Rural	McDonald	76, 43	Pavement improvements from Rte. 43 to Rte. 59 in Anderson and on Rte. 43 from Rte. 76 to the Arkansas state line near Southwest City.	\$2,466	Improve Road Condition
Southwest Rural	Vernon	AA, C, N	Pavement improvements from Rte. M to Rte. 54 in Dederick; on Rte. C from Rte. M to Rte. EE in Walker; and on Rte. N from Rte. 43 near Bronaugh to I-49 near Sheldon.	\$2,936	Improve Road Condition
Southwest Urban	Christian	14	Capacity improvements from 6th Avenue to 14th Avenue in Ozark.	\$4,000	Improve Road Condition
Southwest Urban	Greene	I-44	Capital improvements from Route 13 (Kansas Expressway) to Loop 44 (Glenstone Avenue) in Springfield.	\$27,602	Major interstate reconstruction
Southwest Urban	Greene	60	Upgrade to freeway from US 65 to County Road 223 in Rogersville.	\$15,683	Improve Road Condition
Southwest Urban	Christian	65	Capital improvements from Route 14 to Business 65 (South Street)/Route F in Ozark.	\$10,200	Improve Road Condition
Southwest Urban	Christian	65	Capacity improvements from Route CC to Route 14 in Ozark.	\$13,477	Improve Road Condition
Southwest Urban	Christian	CC	Capital improvements from Fremont Road to Route 65 in Ozark.	\$5,500	Improve Road Condition

* Amounts in 2021 Dollars (Uninflated)

Tier II - Unfunded Road and Bridge Needs - 2021

District	County	Route	Project Description	Estimated Funding Needed (\$1,000)*	Citizen's Guide Unfunded Needs Category
Southwest Urban	Greene	AB, 266, B	Safety improvements from Rte. 160 in Willard to I-44	\$3,000	Increase economic growth and improve safety
Southwest Urban	Greene	60	Extend OzarksTraffic Intelligent Transportation System from Springfield to Rogersville	\$1,075	Increase economic growth and improve safety
Southwest Urban	Greene	13	Phase II Kansas Expressway capital improvements from Bennett Street to Rte. 60 (James River Freeway)	\$5,000	Increase economic growth and improve safety
Southwest Urban	Greene	60	Capital improvements from Rtes. MM/M and Rte. 360 (James River Freeway).	\$9,235	Increase economic growth and improve safety
Southwest Urban	Greene	ZZ	Design and environmental study for extension to Rtes. 60/MM in Republic.	\$1,500	Increase economic growth and improve safety
Southwest Urban	Christian	CC	Intersection improvements at Main Street in Nixa.	\$2,000	Increase economic growth and improve safety
Southwest Urban	Greene	125, I-44 North Outer Road	Intersection improvements and relocate North I-44 Outer Road in Strafford.	\$7,809	Increase economic growth and improve safety
Southwest Urban	Greene	744	Kearney Street safety improvements in Springfield	\$2,100	Increase economic growth and improve safety
Southwest Urban	Christian	14	Westbound Jackson Street operational improvements and bridge widening from Rte. NN to Third Street.	\$3,500	Increase economic growth and improve safety
Southwest Urban	Christian	14	South Street capital improvements from 14th Avenue to Rte. W in Ozark.	\$8,791	Increase economic growth and improve safety
Southeast	Howell	160	Capacity improvements from the north intersection of Rte. 63 to Bus. 63.	\$2,617	Increase economic growth and improve safety
Southeast	St. Francois	K	Intersection improvements at North Wood Drive in Bonne Terre.	\$1,964	Increase economic growth and improve safety
Southeast	Madison	J	Safety improvements from County Road 250 to Rte. W.	\$1,518	Increase economic growth and improve safety
Southeast	Butler	67	Add lanes to provide four lane highway from County Road 352 to County Road 270.	\$32,316	Increase economic growth and improve safety
Southeast	Dunklin	412	Add lanes to provide four lane highway from Rte. AC to Rte. O.	\$59,635	Increase economic growth and improve safety
Southeast	Howell	63	Estimated as add lanes to provide four lane highway from Cloverdale Rd. to Rte. 60.	\$35,122	Increase economic growth and improve safety
Southeast	Perry	55	Access improvements at Perryville.	\$21,845	Increase economic growth and improve safety
Southeast	Cape Girardeau	61	Intersection improvements from I-55 in Fruitland to Rte. D.	\$1,573	Increase economic growth and improve safety

* Amounts in 2021 Dollars (Uninflated)

Tier II - Unfunded Road and Bridge Needs - 2021					
District	County	Route	Project Description	Estimated Funding Needed (\$1,000)*	Citizen's Guide Unfunded Needs Category
Southeast	Cape Girardeau	61	Intersection improvements at South Donna Drive and South Shawnee Boulevard in Jackson.	\$1,301	Increase economic growth and improve safety
Southeast	Cape Girardeau	25	Add shoulders from Rte. 61 to Rte. K.	\$14,094	Increase economic growth and improve safety
Southeast	Cape Girardeau	I-55	Capitol improvements at Exit 93.	\$17,000	Increase economic growth and improve safety
Southeast	Shannon	W	Bridge replacement over Pike Creek.	\$1,204	Improve Bridge Condition
Southeast	Bollinger	N	Add rumblestripes from Rte. 51 in Bollinger County to Rte. T in Cape Girardeau County.	\$1,594	Increase economic growth and improve safety
Southeast	Madison	72	Bridge replacement over Turkey Creek.	\$2,128	Improve Bridge Condition
Southeast	Iron	32	Bridge replacement over Reid Creek.	\$1,400	Improve Bridge Condition
Southeast	St. Francois	67	Add interchange at Rte. Y/JJ.	\$18,197	Increase economic growth and improve safety
Tier II Prioritized Needs - Statewide Total:				\$2,174,299	

* Amounts in 2021 Dollars (Uninflated)

SUMMARY

Tier 2 High-Priority Unfunded Road and Bridge Needs - 2021

District	Improve Bridge Condition	Improve Road Condition	Major Interstate Reconstruction	Increase Economic Growth and Improve Safety	Total
Northwest	\$23,816	\$30,952		\$42,750	\$97,518
Northeast	\$4,000	\$19,390		\$103,000	\$126,390
Kansas City Rural		\$27,144		\$38,835	\$65,979
Kansas City Urban		\$182,830		\$180,000	\$362,830
Central				\$213,799	\$213,799
St. Louis	\$100,700	\$76,500	\$443,400	\$162,800	\$783,400
Southwest Rural		\$16,443	\$51,215	\$122,745	\$190,403
Southwest Urban		\$48,860	\$27,602	\$44,010	\$120,472
Southeast	\$4,732			\$208,776	\$213,508
Total	\$133,248	\$402,119	\$522,217	\$1,116,715	\$2,174,299

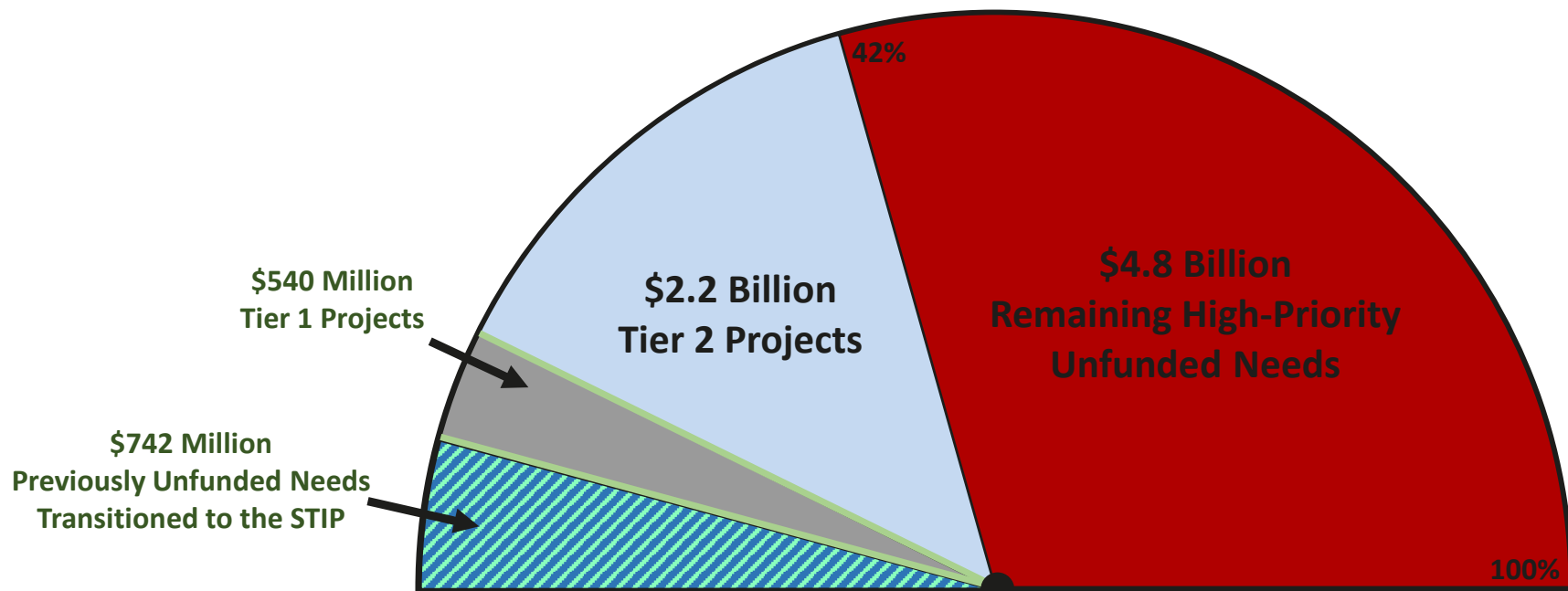
Amounts in \$1,000 in 2021 Dollars (Uninflated)

SUMMARY

10-Year Unfunded Needs Remaining after Tier 1 and Tier 2

Tier 2

Category	Impact
Improve road condition	721 miles
Improve bridge condition	53 bridges
Major Interstate Reconstruction	56 miles
10 Year Economic Output	\$5.4 billion
Annual Jobs Created	1732



\$8.25 Billion High-Priority Unfunded Needs

SUMMARY

Major Bridge Needs

Missouri has 10,397 bridges, including 209 major bridges that are longer than 1,000 feet, or about the length of three football fields. Major bridges are managed and prioritized centrally by MoDOT, rather than by the district offices and local planning partners. The following list shows the next major bridges to be worked on in the next ten years and their estimated costs.

Dist	County	Route	Location or Bridge Name	Total Cost (\$1,000)
SE	PERRY	MO 51 S	Chester	\$76,828
NW	BUCHANAN	IS 229 N/S	Doubledecker in St. Joseph	\$60,420
KC	JACKSON	MO 291 N	Liberty	\$50,160
SE	DUNKLIN	US 62 E	St. Francis	\$6,840
KC	JACKSON	US 24 E	Independence Avenue	\$25,194
KC	PLATTE	MO 92 E	Centennial/ Leavenworth	\$57,060
SE	OZARK	US 160 E	Theodosia	\$37,340
NE	MARION	US 24 E	Quincy Memorial	\$51,000
NW	ATCHISON	US 136 E	Brownville	\$45,600