

# Introductions



Mary Miller  
*Project Director*

Karlee Covington  
*Project Team Coordinator*

Ryan Kneib  
*Project Team Coordinator*

Kurt Hathaway  
*Project Inspector*

Blake Stephens  
*Project Inspector*

Courtney Lego  
*Administrative Technician*



James Wang  
*Kansas City Representative*



Julie Sarson  
*Owner Engineer*



# Project Overview

## Project Location



## Purpose

To facilitate the safe movement of people and goods along US-169 while improving mobility, connectivity, and accessibility across the Missouri River.

## Needs

- Maintain Infrastructure
  - Address the physical condition of the historic Buck O'Neil Bridge.
- Maintain a reliable regional transportation linkage across the Missouri River that services local and regional traffic and minimizes local traffic conflicts.
- Improve the operational and safety performance of the Missouri River crossing for all transportation modes.

# Project Goals



## Project Goals

1. Construct a new Missouri River Bridge that can be reasonably maintained and will provide a century of service within the program budget.
2. Provide a safe, connected and accessible transportation facility that improves system performance.
3. Minimize the impact to the traveling public during construction.
4. Complete the project by December 1<sup>st</sup>, 2024, utilizing a diverse workforce.

## Design-Build Contract Amount

\$219,353,000

Fixed Price/Best Value

# DBE Goals



## Disadvantaged Business Enterprises Goals

14% Construction Activities

18% Professional Service Activities

## Workforce Diversity Goals

12.7% minority per craft

6.9% female per craft

## On-the-Job Training (OJT) Requirement

7 positions at 1000 hours each

6 Construction | 1 Professional Services

# Best Value Proposal



## BUCK O'NEIL BRIDGE





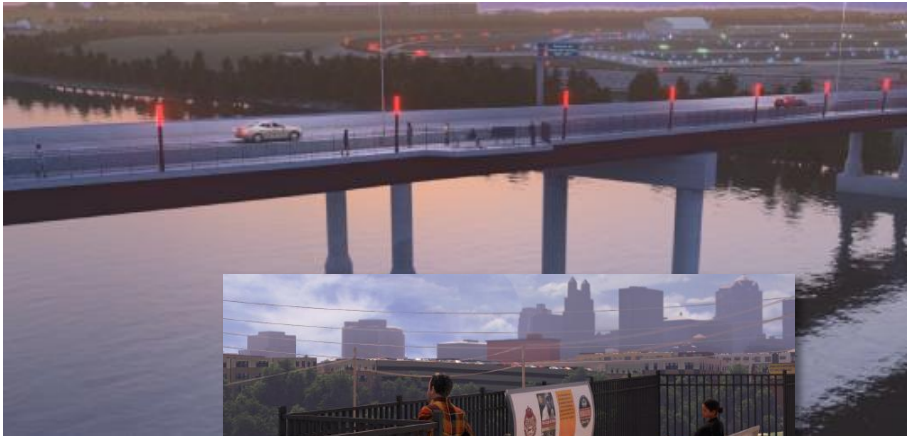
# Massman-Clarkson Joint Venture



- 2 River Bridge Structures
  - 2 lanes NB and SB
  - 10' Shared Use Path
- Downtown Airport Access Improvements
- 45 mph direct connections between US 169 and I-35
- City Street Access Changes
- Construction Closures
  - SB 169 – 616 Days
  - NB 169 – 0 Days

Completion Date – 12/01/2024

## Massman-Clarkson Joint Venture



- Color changing enhanced pedestrian lighting on River bridge
- Overlook at center of bridge with bench
- Enhanced Bridge Railing
- Murals on piers and MSE wall
- Improvements at riverfront trailhead





# Bike/Ped Accommodations

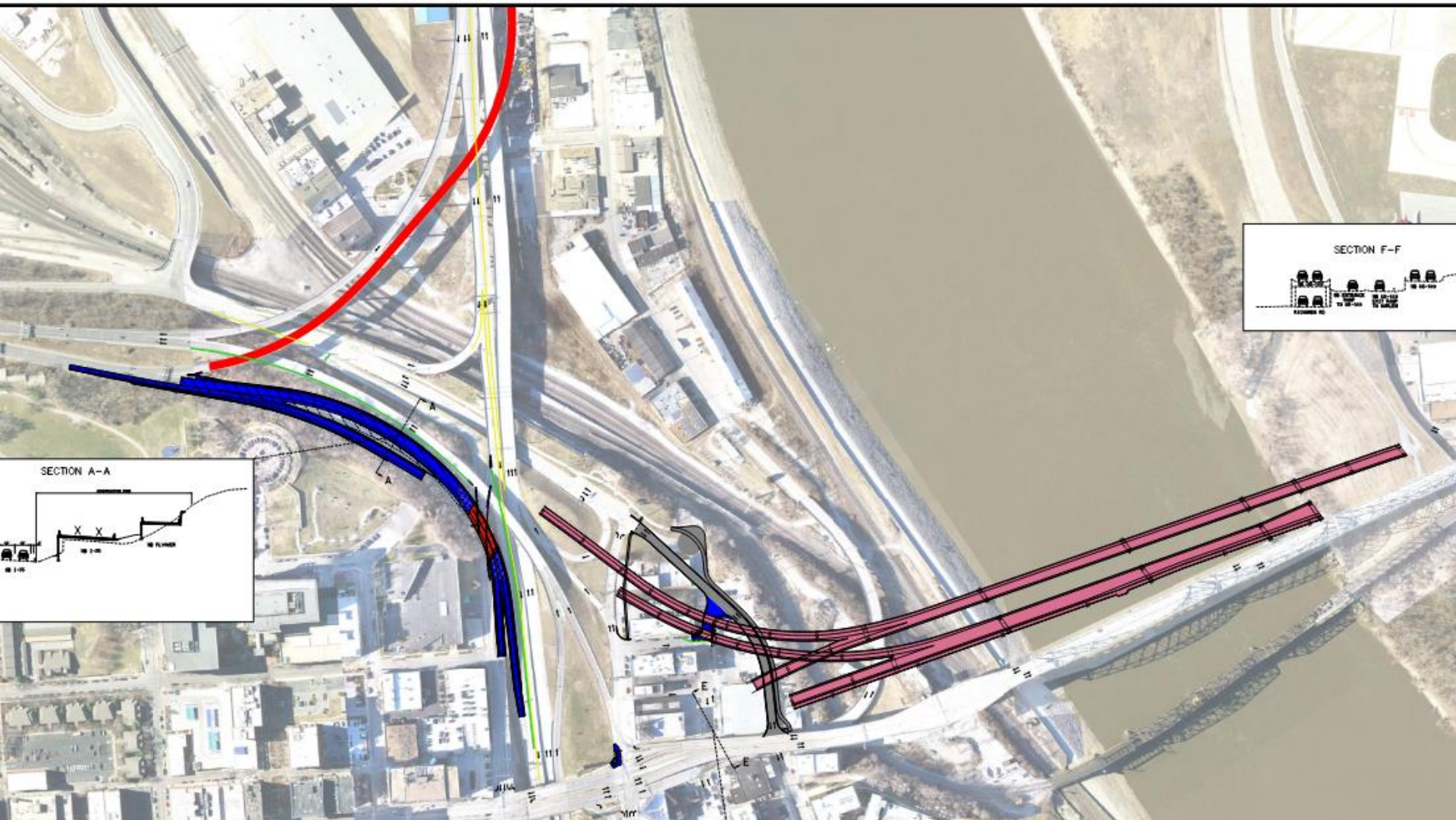




# 2021 Construction Activities



# 2022 Construction Activities







# Questions?