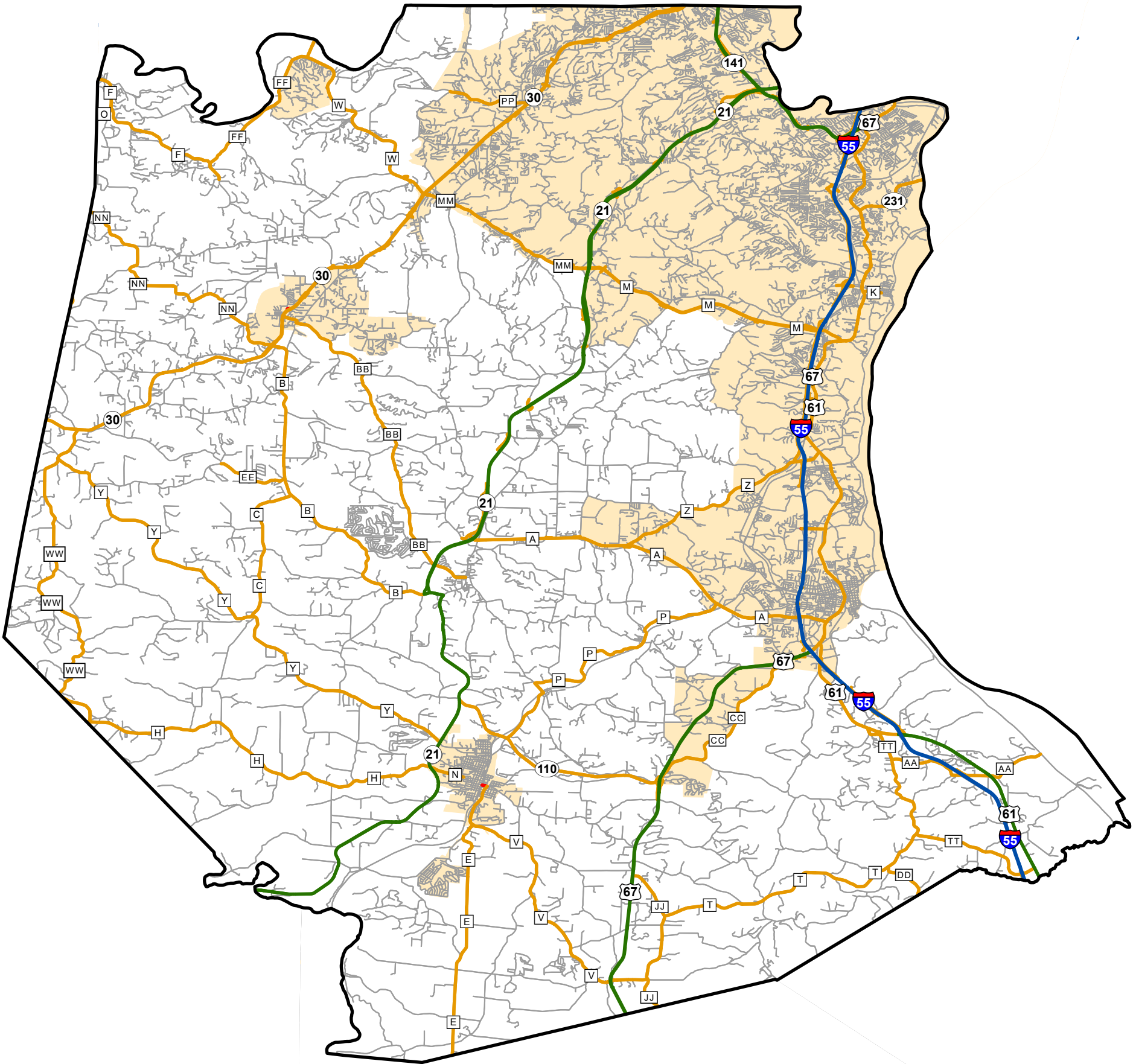


State System Classification

JEFFERSON COUNTY

MISSOURI



Transportation Planning
105 W. Capitol Ave.
Jefferson City, MO 65102
Phone (573) 526-5478
Fax (573) 526-8052

June 2025



State System Class	Miles
Interstate	27.807
Primary	61.664
Supplementary	270.783
State Marked - NOS	
Other Roads	
Urban Area	