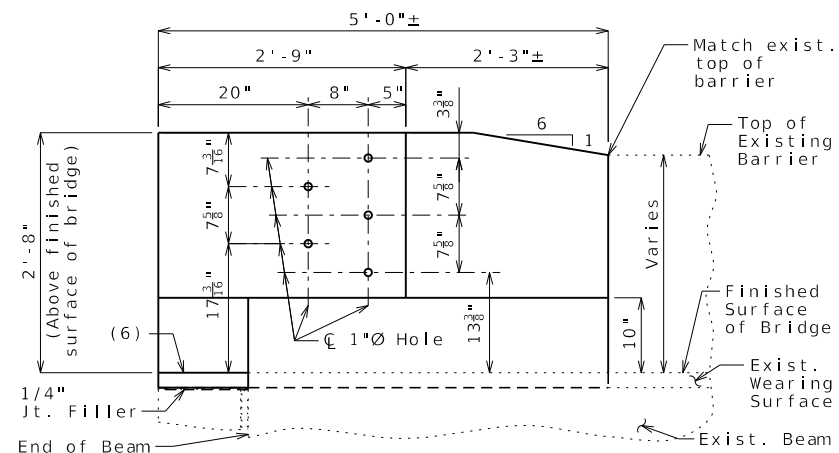
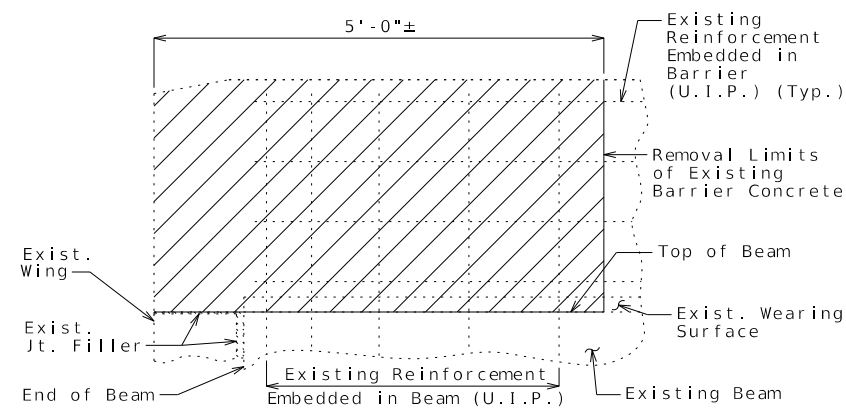


## U.I.P. &amp; REHABILITATE EXISTING (x', x') X SPANS



Existing Wearing Surface

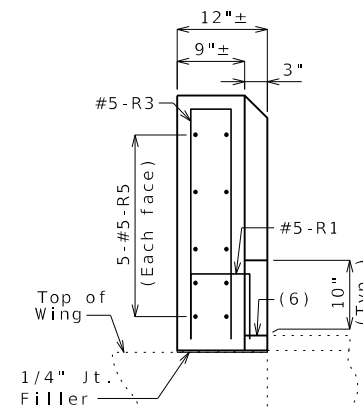
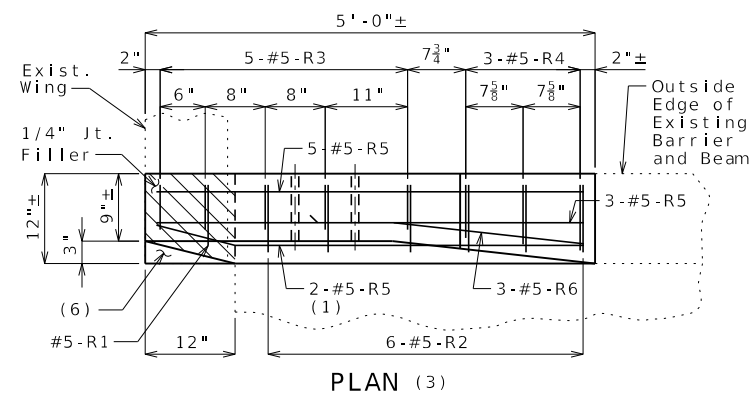
Guidance: (Do not show on plans.)

Substitute alternate Plan for skewed structures.

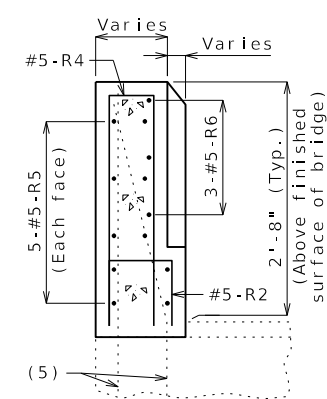
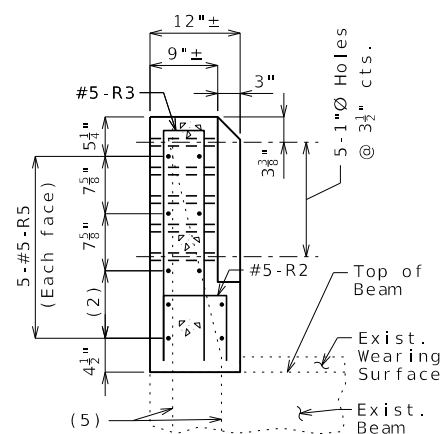
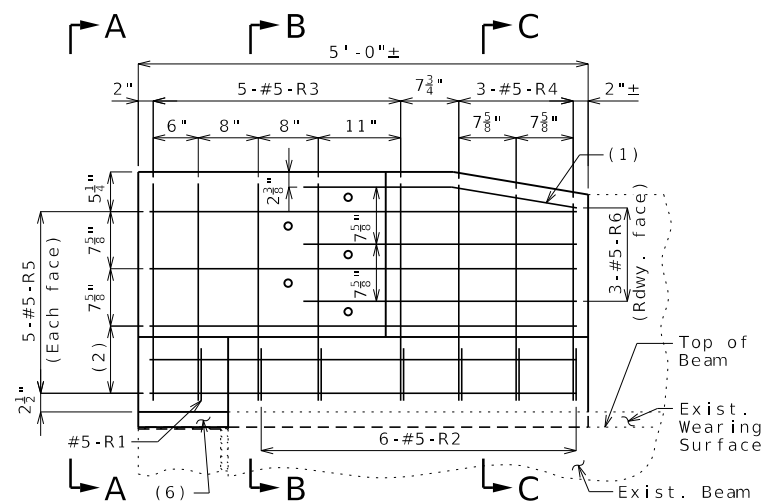
Modify details as needed to suit your structure.

Use with BEM02-2 (Bill of Reinforcing Steel).

Estimated Quantities	
Item	Total
Barrier End Modification each	4



- (1) Bend in field.
- (2) 2 Spa. @  $4\frac{1}{2}$ "
- (3) Existing reinforcement  
not shown for clarity.
- (4) Existing longitudinal  
reinforcement not  
shown for clarity.
- (5) Existing reinforcement  
embedded in beam (U.I.P.) (  
Bend in field as needed) (Typ.)
- (6) Fill with mortar or concrete.



General Notes:

Design Specifications:  
2002 AASHTO LFD (17th Ed.) Standard Specifications

Design Unit Stresses:  
Class B-1 Concrete  $f'_c = 4,000$  psi  
Reinforcing Steel (Grade 60)  $f_y = 60,000$  psi

**Reinforcing Steel:**  
Minimum clearance to reinforcing steel shall be 1 1/2",  
unless otherwise shown.

Miscellaneous:  
One lane of traffic shall remain open during construction. See roadway plans for traffic control.

All exposed edges of barrier shall have either a 1/2-inch radius or a 3/8-inch bevel, unless otherwise shown.

Outline of existing work is indicated  
lines. Heavy lines indicate new work.

All reinforcement in barrier end modification shall be epoxy coated.

Bars bonded in existing concrete not removed shall be cleanly stripped and embedded into new concrete where possible. If length is available, existing bars shall extend into new concrete at least 40 diameters for plain bars and 30 diameters for deformed bars, unless otherwise noted.

The area exposed by the removal of concrete and not covered with new concrete shall be coated with a qualified special mortar in accordance with Sec 704.

Cost of removing existing barrier concrete, and cost of furnishing and installing new concrete, new reinforcing steel, and any other work incidental to the barrier end modification, complete in place, will be considered completely covered by the contract unit price for Barrier End Modification.

REPAIRS TO BRIDGE:  
ROUTE OVER

ROUTE \_ FROM ROUTE \_ TO ROUTE \_  
ABOUT \_ MILES \_ OF ROUTE \_  
BEGINNING STATION x+x.x± (MATCH EXISTING)

DATE PREPARED	
3/7/2024	
ROUTE	STATE
	MO
DISTRICT	SHEET NO.
	3
COUNTY	

JOB NO.
---------

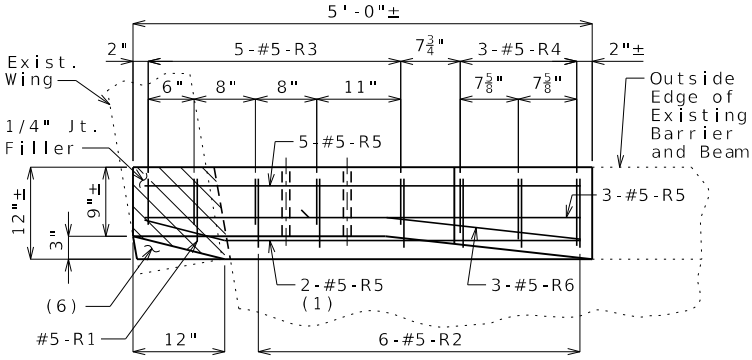
CONTRACT ID.
--------------

PROJECT NO.
-------------

BRIDGE NO.
------------

[illegible]MISSOURI HIGHWAYS AND TRANSPORTATION  
COMMISSION

105 WEST CAPITOL  
JEFFERSON CITY, MO 65102  
1-888-ASK-MODOT (1-888-275-6636)



PLAN (3)

Skewed Plan