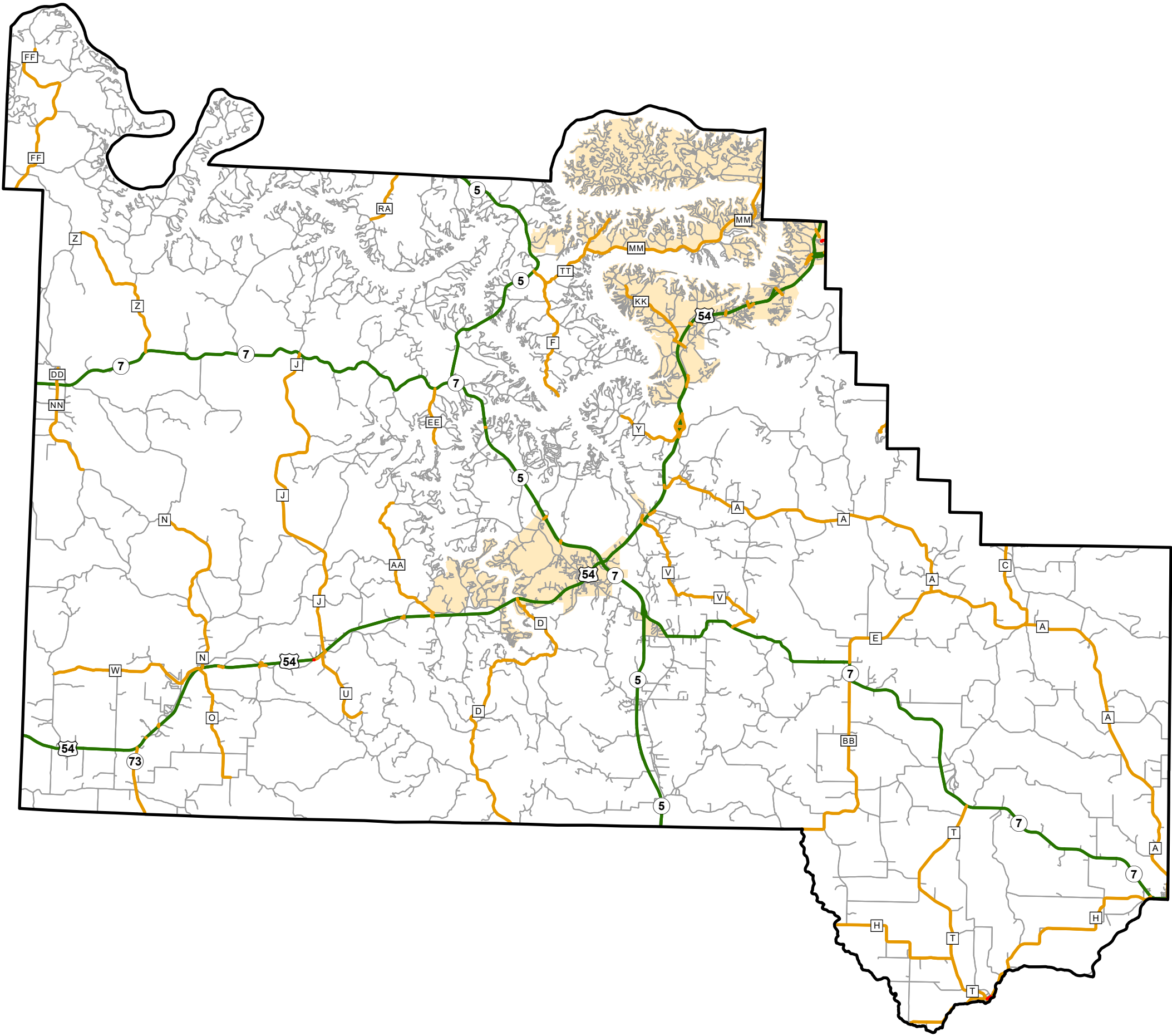


State System Classification

CAMDEN COUNTY
MISSOURI



State System Class	Miles
Interstate	0
Primary	99.84
Supplementary	159.261
State Marked - NOS	
Other Roads	
Urban Area	



105 W. Capitol Ave.
Jefferson City, MO 65102
Phone (573) 526-5478
Fax (573) 526-8052

June 2025