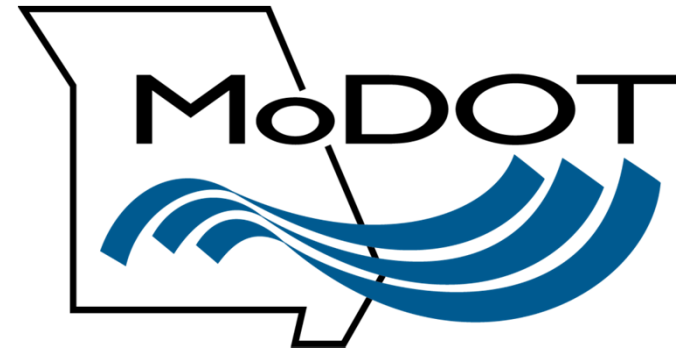


U.S. Route 50/61/67 (Lindbergh) resurfacing between Big Bend and Barracksvue

February 10, 2021





What is the purpose of this
project? |

Main Goal: Maintain system



The Missouri Department of Transportation has a project scheduled to resurface Route 50/61/67 (Lindbergh Boulevard) between Barracksvue and Big Bend in 2022. During that project, the department is also making Federally required updates to the roadway's pedestrian facilities. Sections of sidewalk will be connected and the sidewalks will be updated to meet Americans with Disabilities Act requirements

.

Overall project U.S. Route 50/61/67 (Lindbergh)

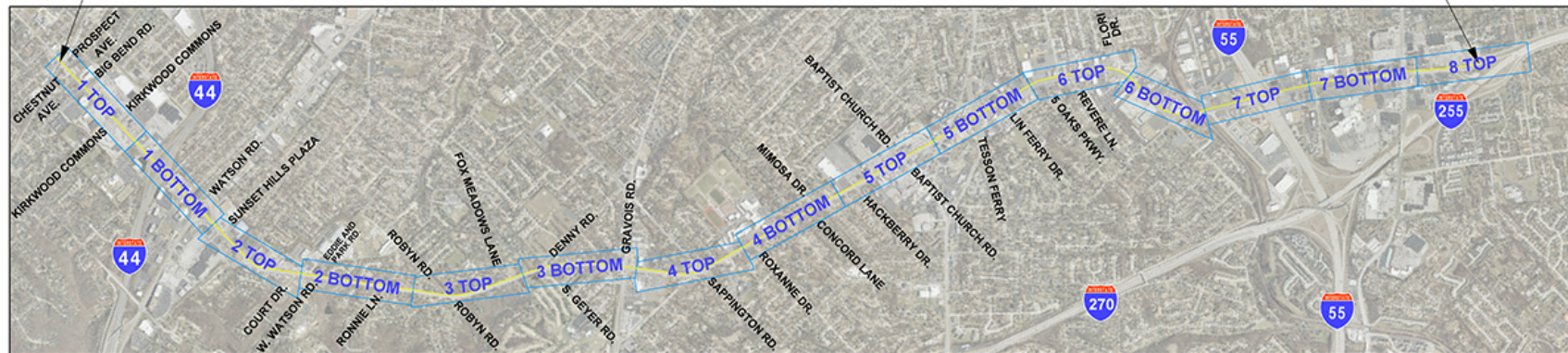
LINDBERGH BOULEVARD
CENTERLINE

BOARD LOCATION

LINDBERGH BOULEVARD
ST. LOUIS COUNTY, MO

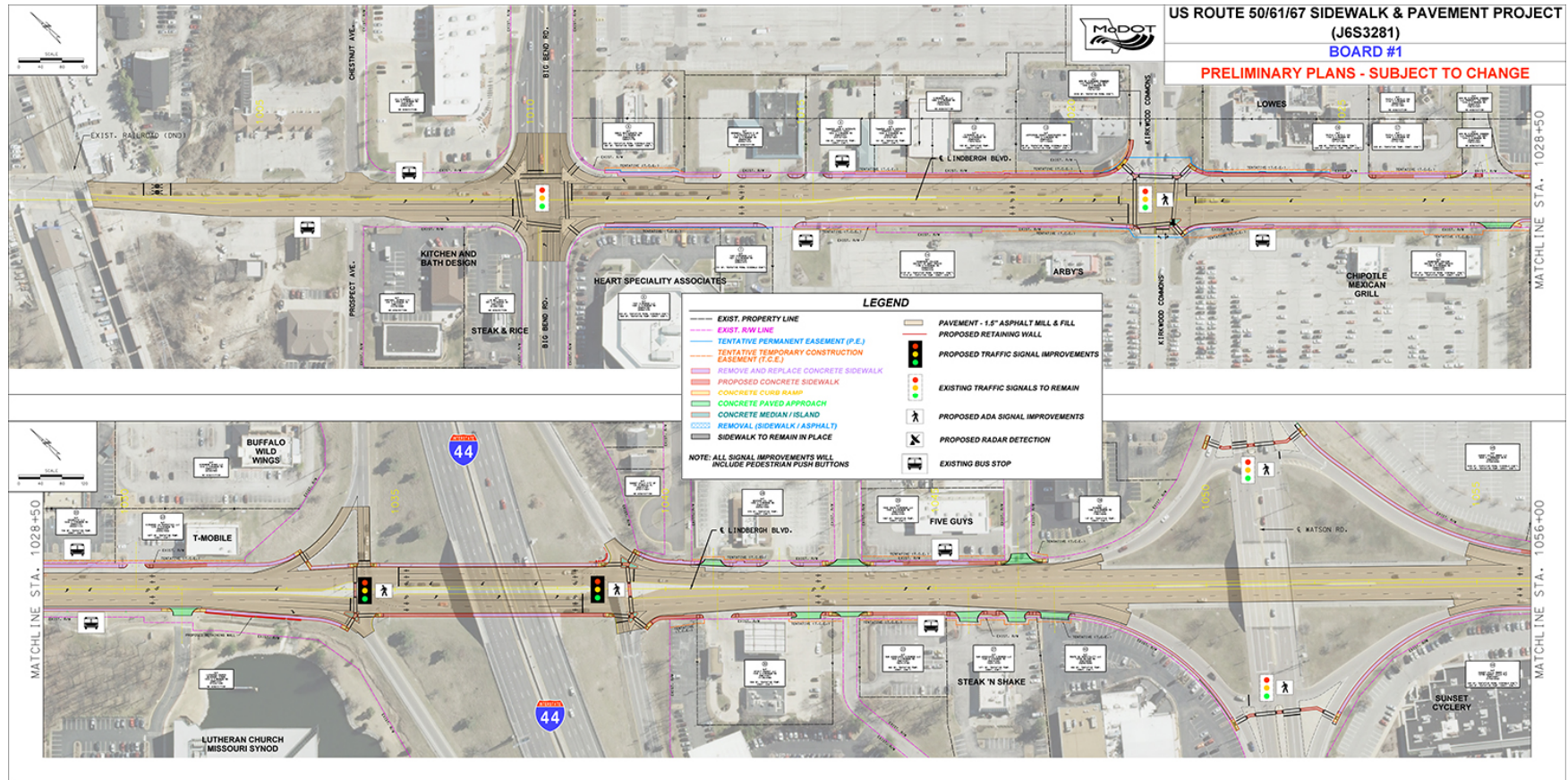
BEGIN US 61/67/50 PAVEMENT UPGRADES
AND ADA IMPROVEMENTS STA. 1001+90

END US 61/67/50 PAVEMENT UPGRADES
AND ADA IMPROVEMENTS STA. 1386+00



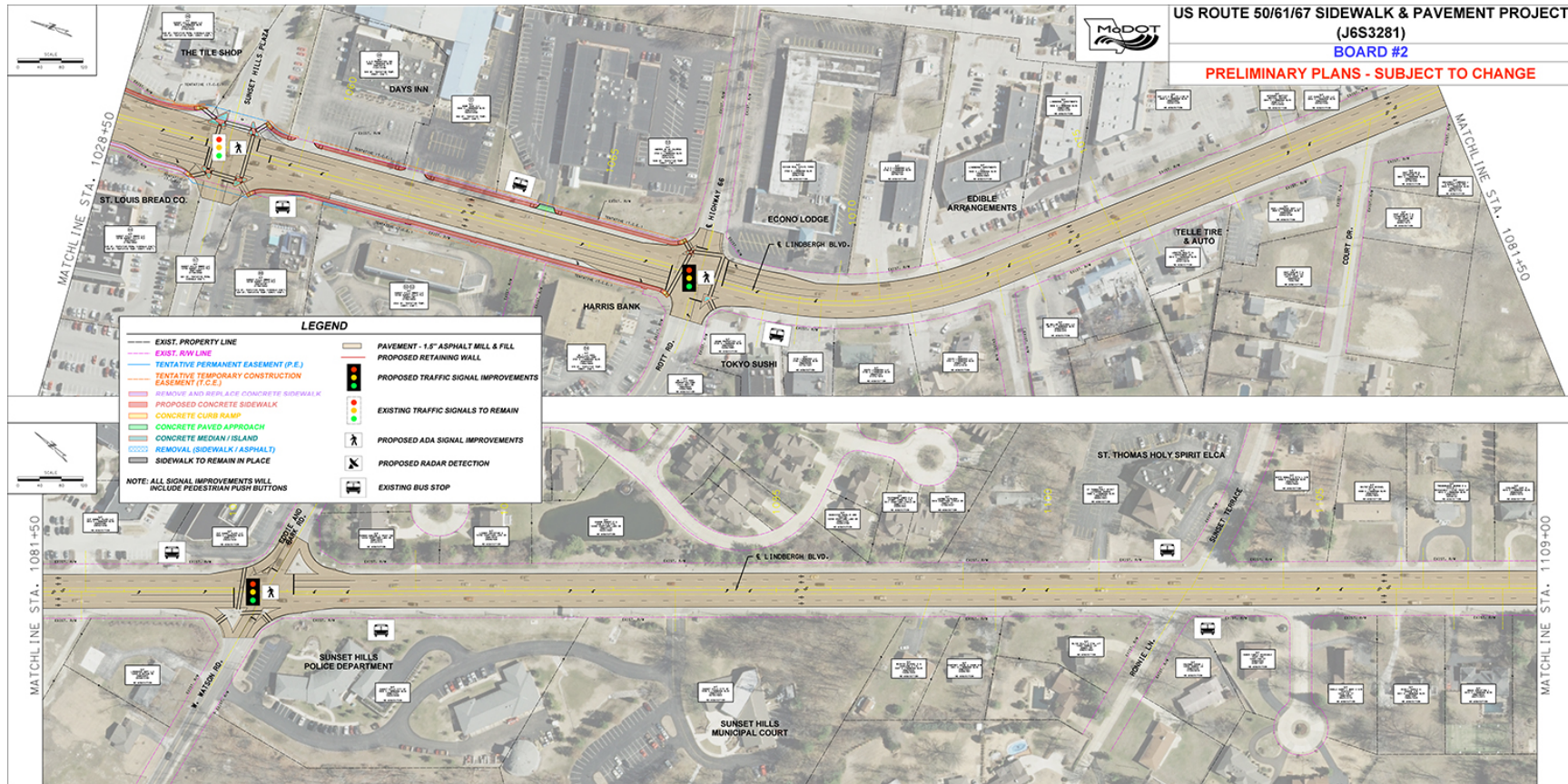
If you have questions, please share them in Q&A

Lindbergh - Chestnut and Watson Road



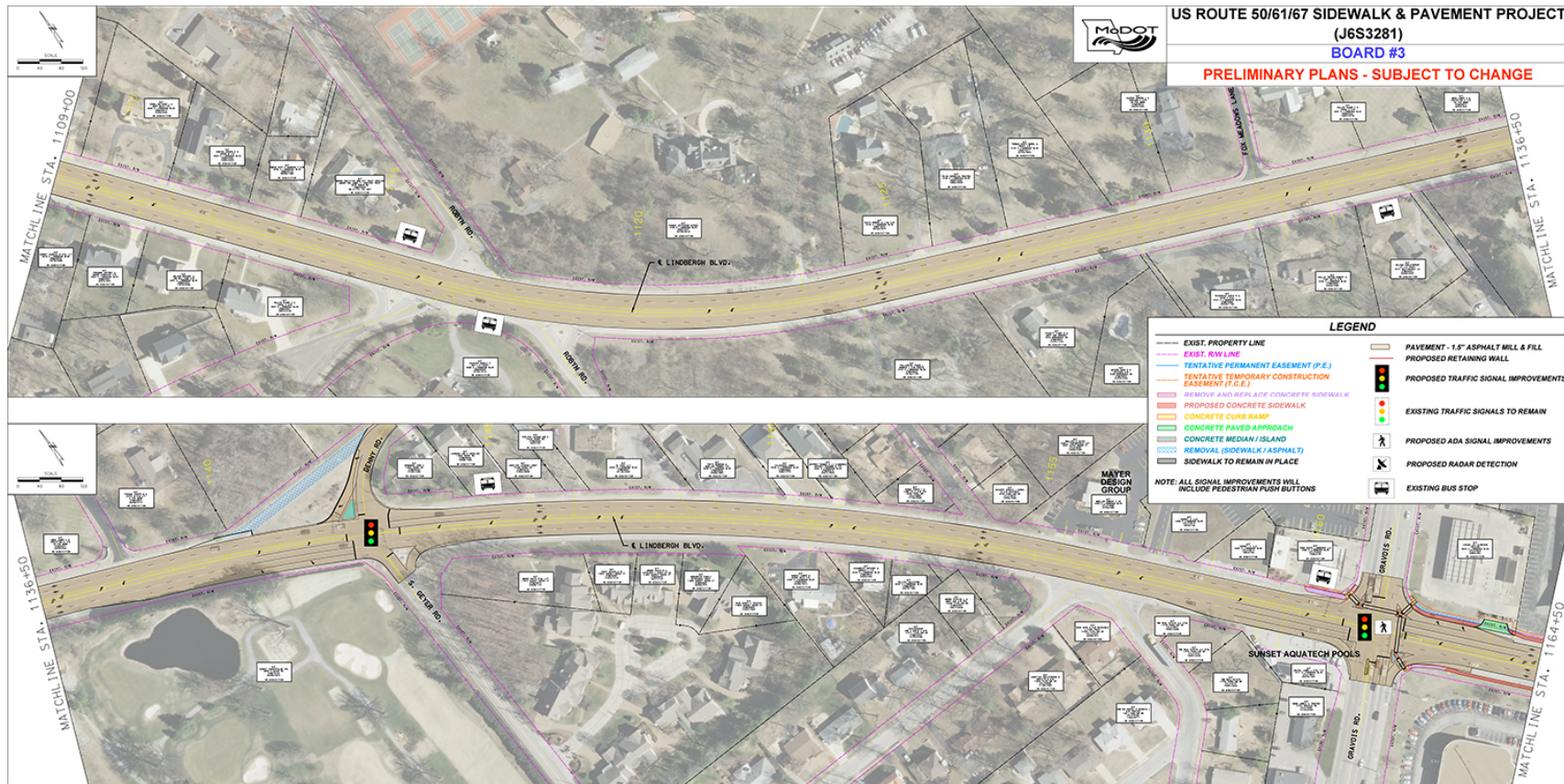
If you have questions, please share them in Q&A

Lindbergh – Sunset Hills Plaza to Court



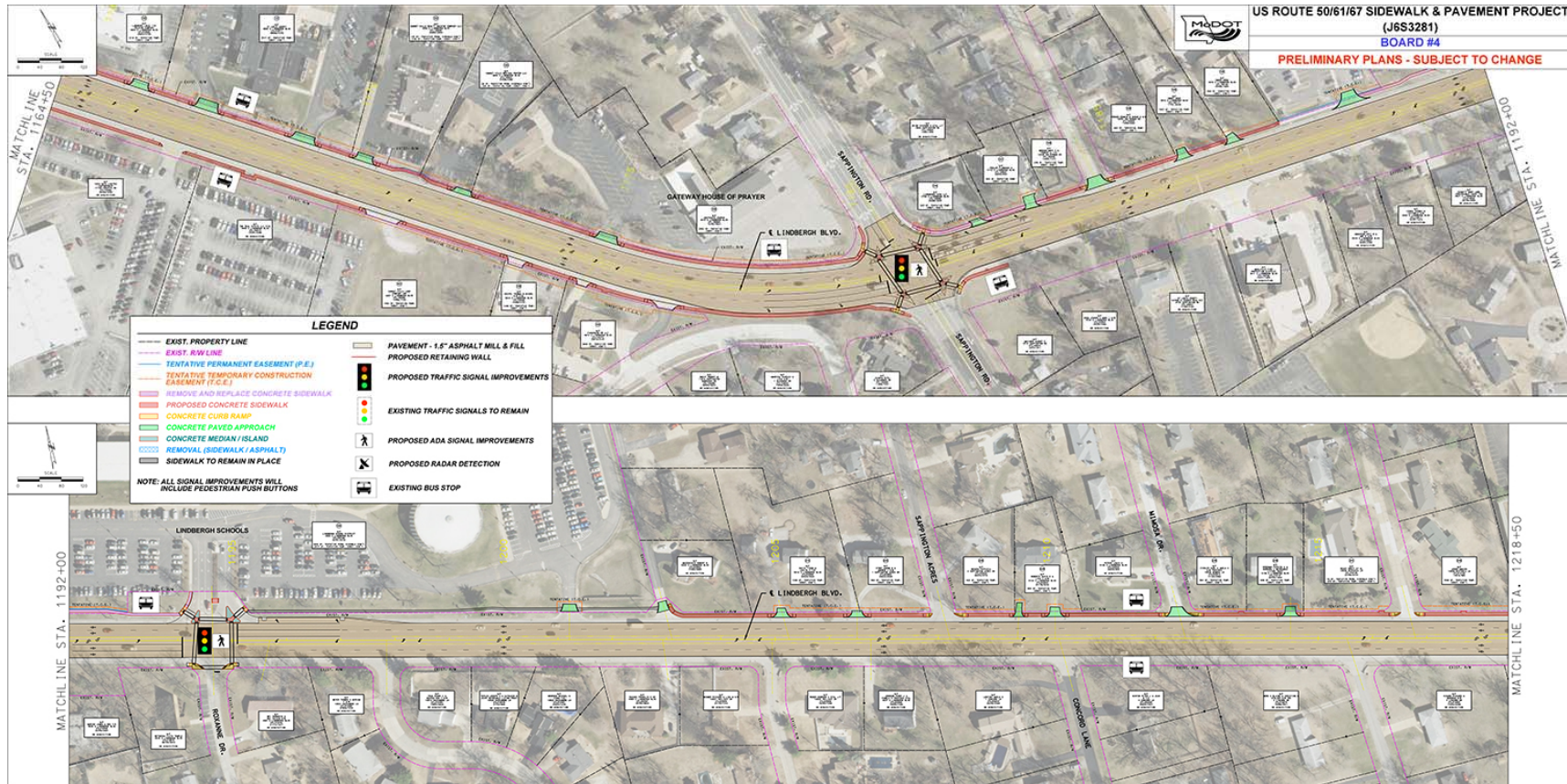
If you have questions, please share them in Q&A

Lindbergh – Robyn Road to Gravois



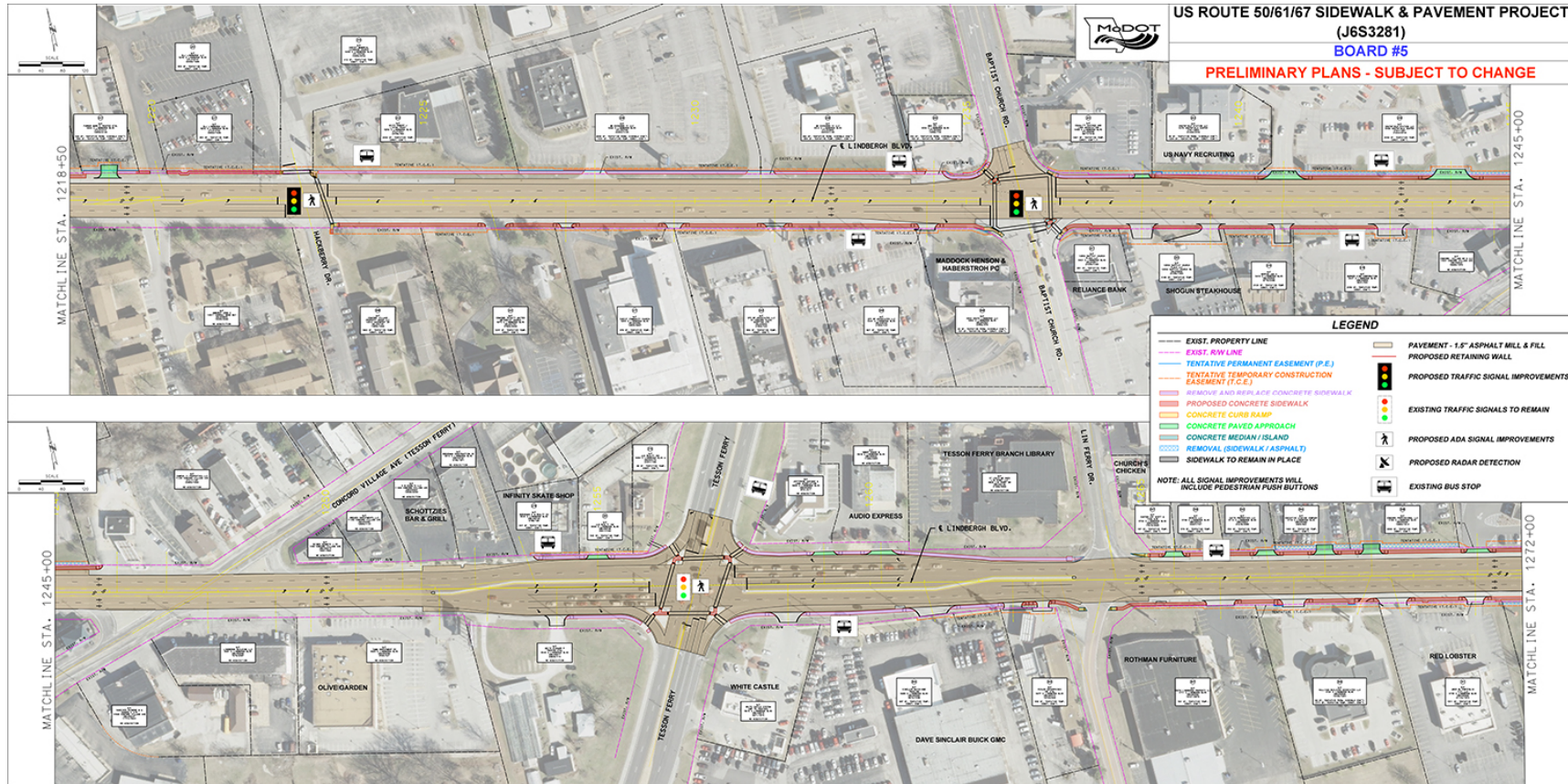
If you have questions, please share them in Q&A

Lindbergh – Gravois to Mimosa



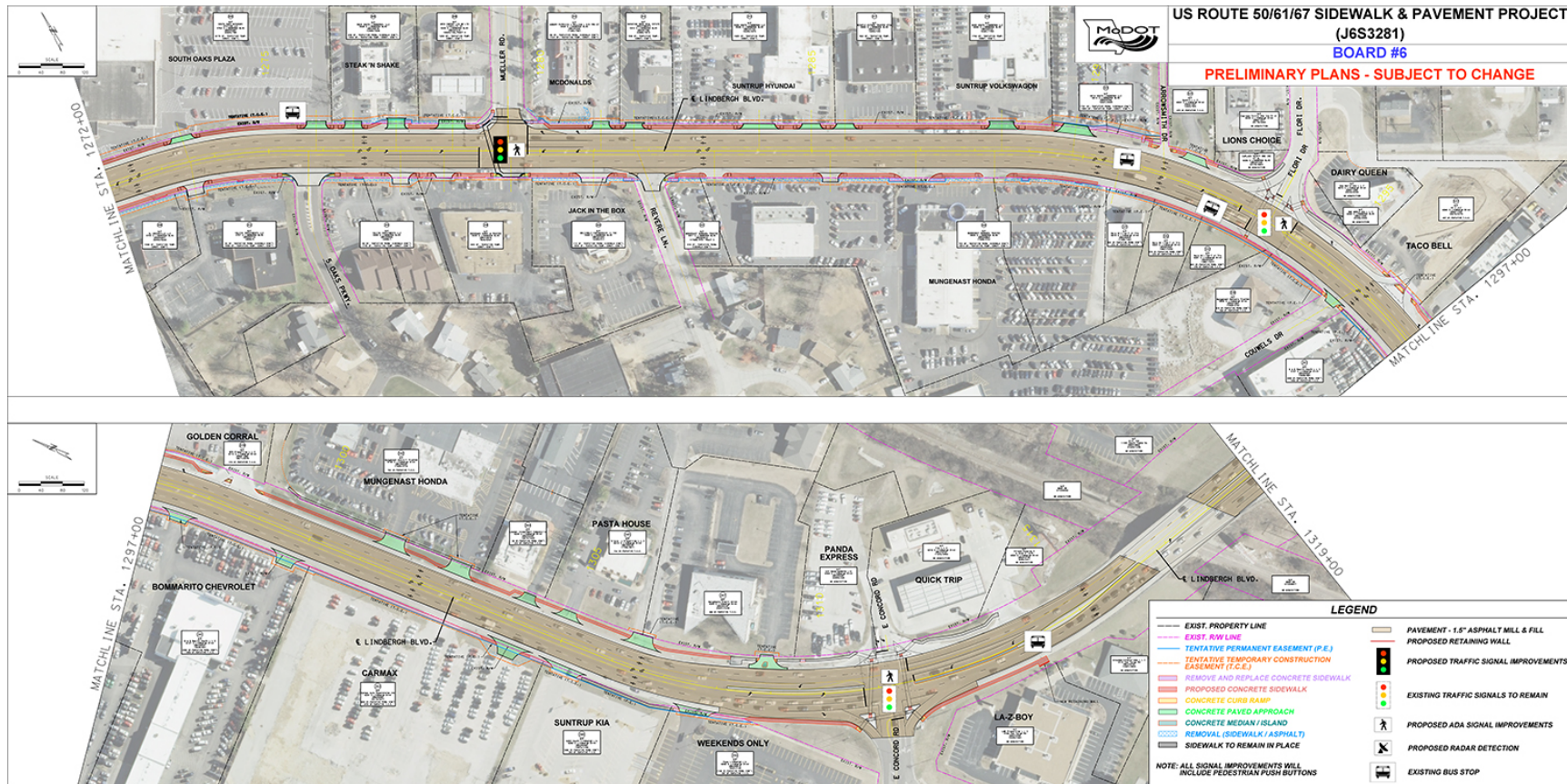
If you have questions, please share them in Q&A

Lindbergh – Hackberry to Lin Ferry



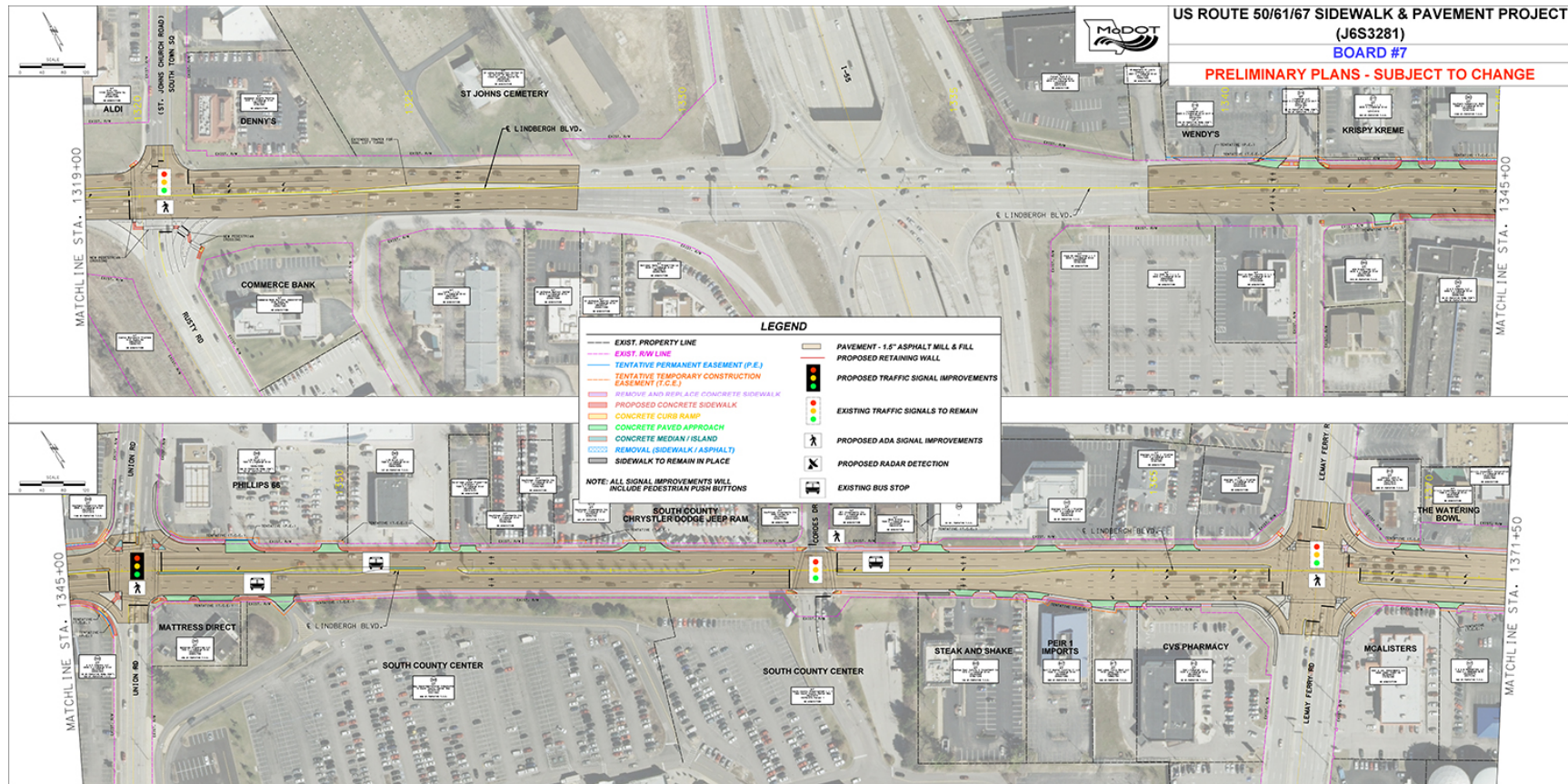
If you have questions, please share them in Q&A

Lindbergh – Oaks Parkway to E. Concord



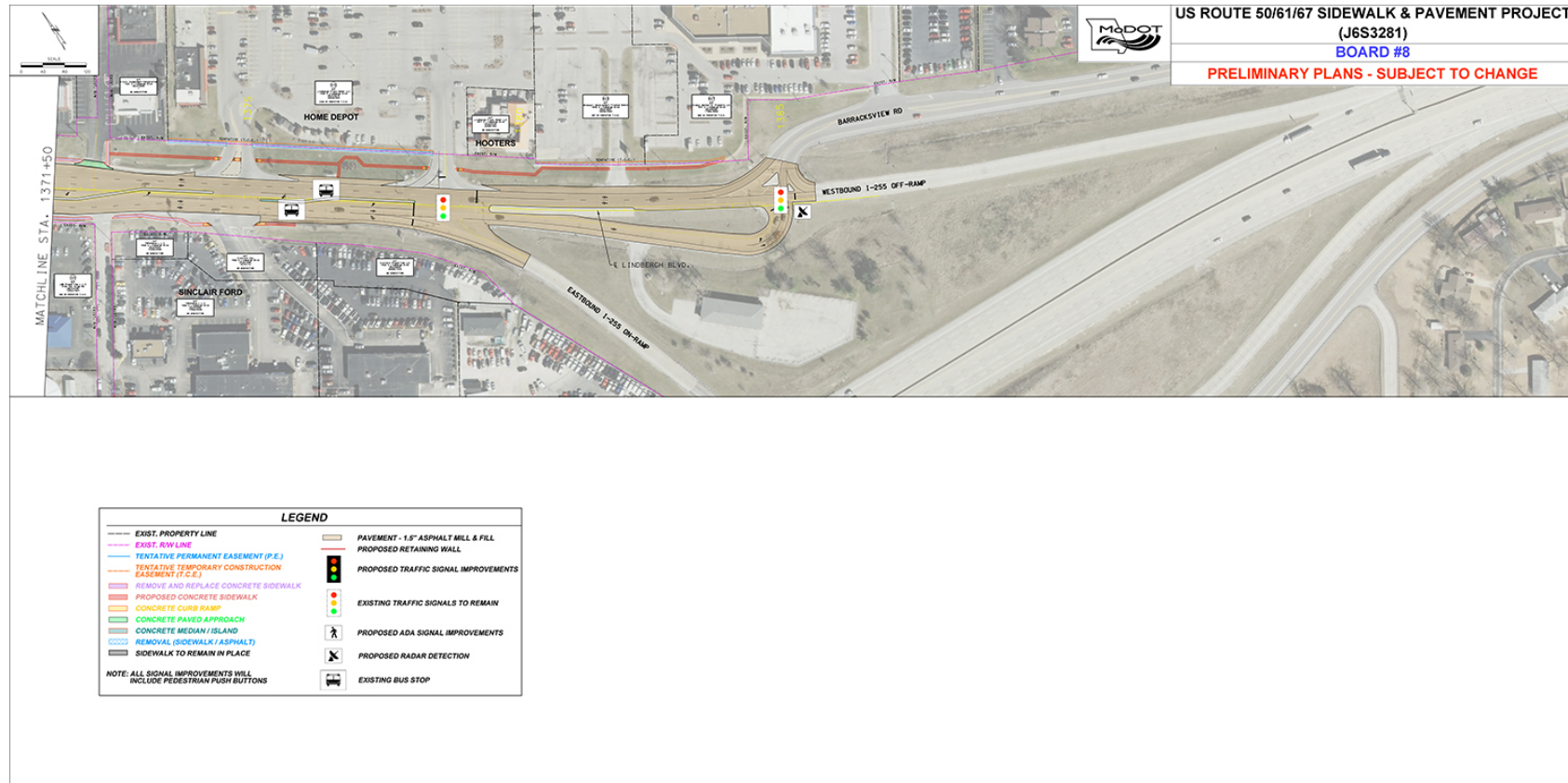
If you have questions, please share them in Q&A

Lindbergh – St. John's Church Road to Lemay Ferry



If you have questions, please share them in Q&A











Lindbergh – LeMay Ferry to Barracksview



If you have questions, please share them in Q&A

Need a closer look?

All display files are available on the website in .pdf form to download and take a closer look at specific areas.

- [Lindbergh resurfacing project fact sheet](#) 
- [SL-Lindbergh, Overall Corridor](#) 
- [SL-Lindbergh, Chestnut to Watson](#) 
- [SL-Lindbergh, Sunset Hills Plaza to Court](#) 
- [SL-Lindbergh, Robyn Road to Gravois](#) 
- [SL-Lindbergh, Gravois to Mimosa](#) 
- [SL-Lindbergh, Hackberry to Lin Ferry](#) 
- [SL-Lindbergh, S Oaks Parkway to E Concord Road](#) 
- [SL-Lindbergh, St. Johns Church Road to Lemay Ferry](#) 
- [SL-Lindbergh, Lemay Ferry to Barracksview](#) 

What are the anticipated impacts?

- Impacts should be minimal. Construction details have not been finalized at this time. We have confirmed a timeline of construction beginning in spring 2022. A completion date is estimated to be in late fall 2023. MoDOT will work with business owners and residents to ensure that access is available during construction.

What is the anticipated timeline?

Event	Time
Preliminary plans	Completed
Public Hearing	February 2021
Right of Way process starts	Spring 2021
Project awarded	Spring 2022
Construction begins	Late spring 2022
Construction complete	Late fall 2023

How can I Submit my comment? Contacts?



- ☐ Please submit all comments by February 24, 2021 at 4 p.m.
- ☐ Share your thoughts on the project here:
<https://www.surveymonkey.com/r/lind2021vph>
- ☐ You can also access the survey by scanning the QR code to the left.
- ☐ Contact the project manager by e-mail Stuart.McNeill@modot.mo.gov or by phone: 314-370-3104.



THANK YOU FOR
ATTENDING

