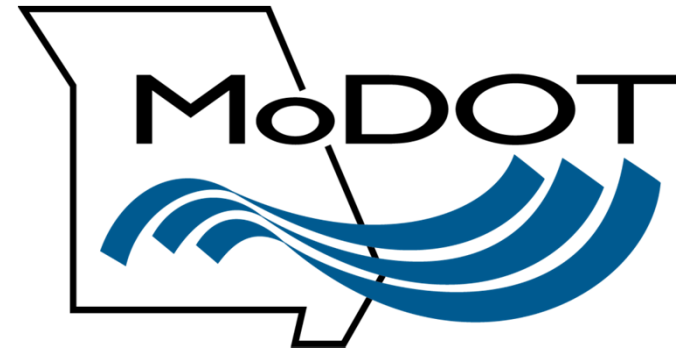


Big Bend over Interstate 44 bridge replacement

January 19, 2021





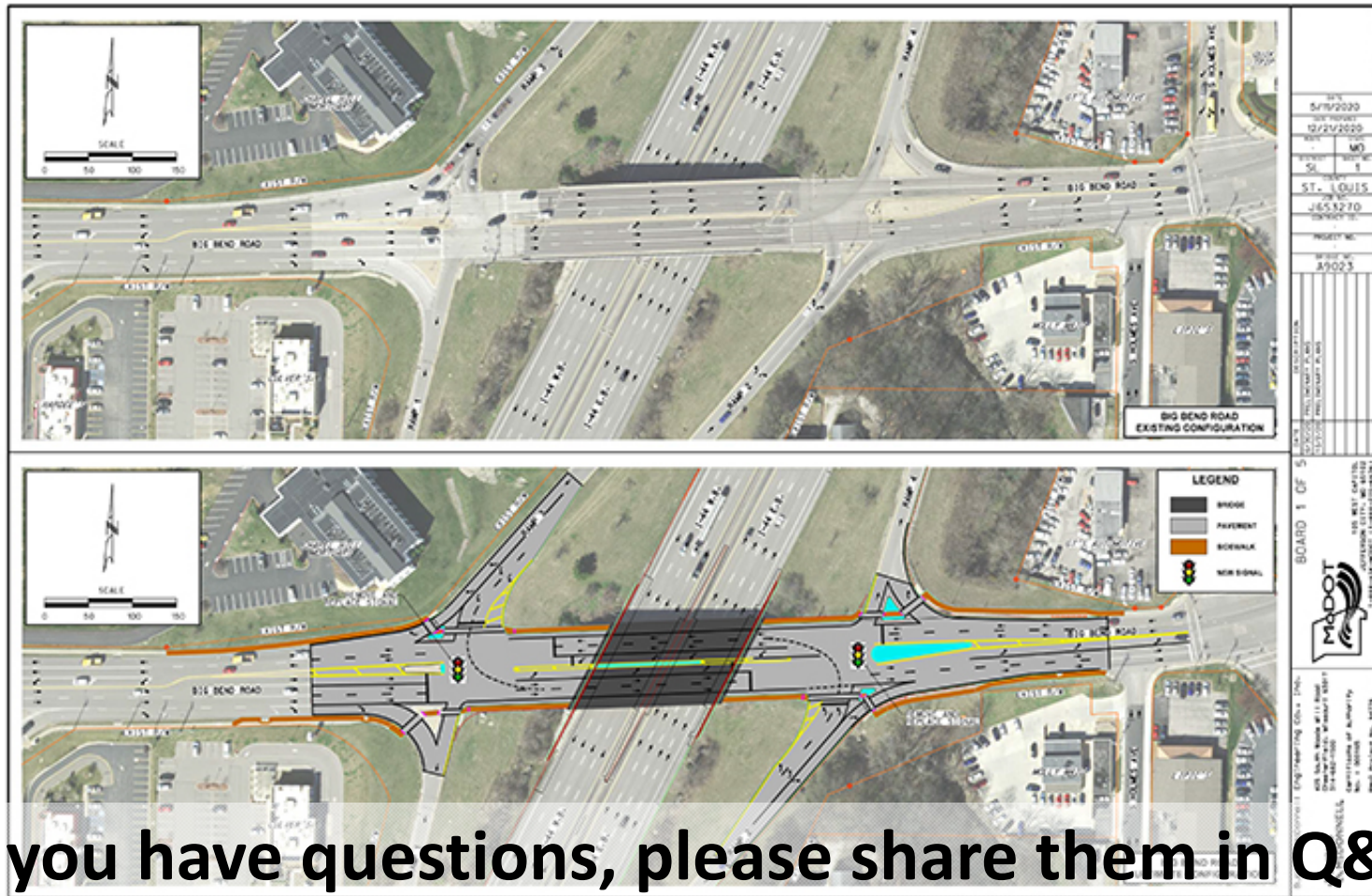
What is the purpose of this
project? |

Main Goal: Enhance safety



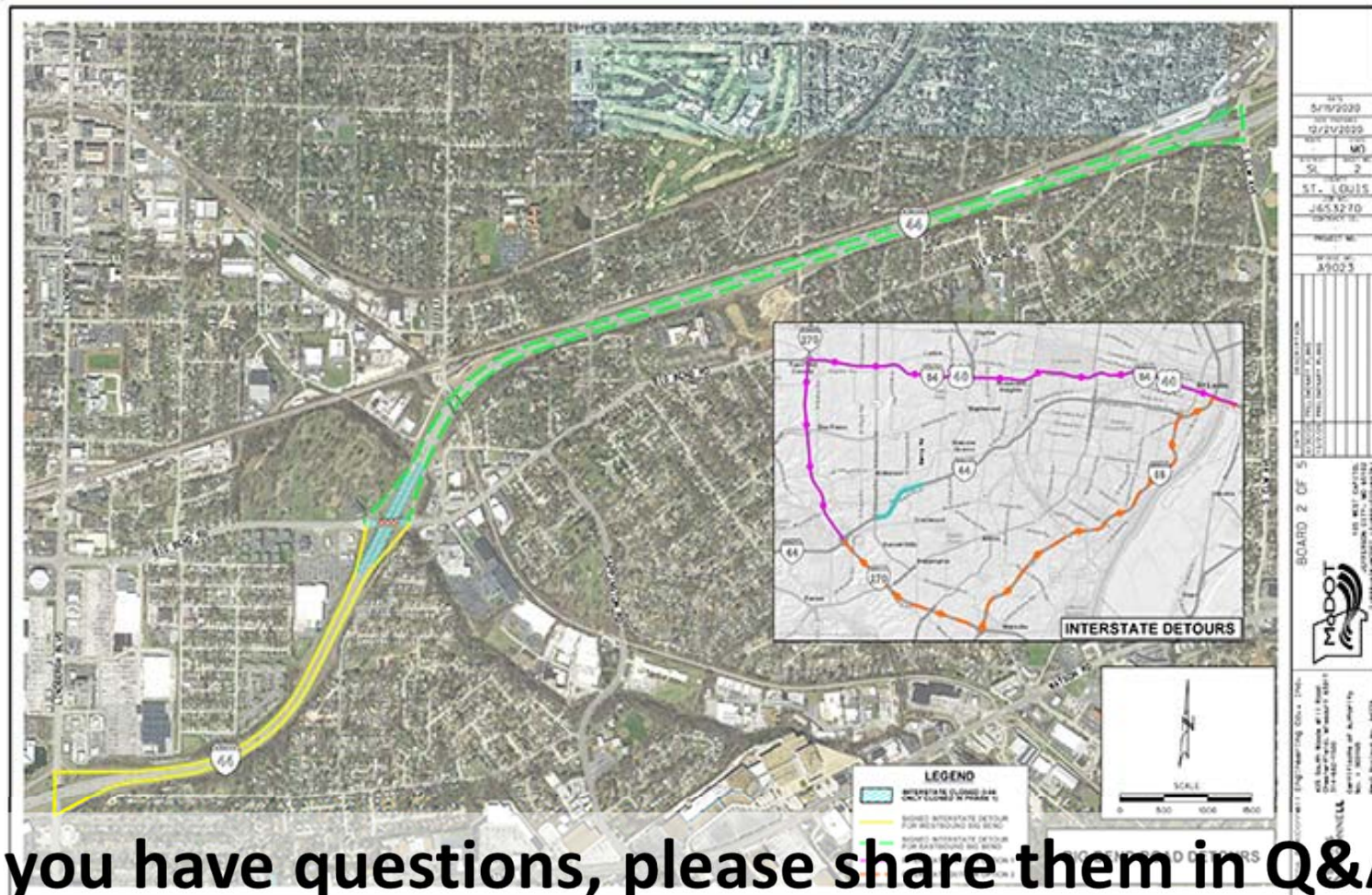
- The bridge remains safe, but at more than 50 years old, this bridge needs constant roadway and structure maintenance. It is cheaper, at this point, to remove and replace the bridge than to continue to maintain or rehabilitate the bridge.

Big Bend over I-44 - Overall project



If you have questions, please share them in Q&A

Big Bend over I-44 – Detour routes



If you have questions, please share them in Q&A

Big Bend over I-44 – Closure impacts



If you have questions, please share them in Q&A

Big Bend over I-44 – eastbound ramp closures



Big Bend over I-44 – westbound ramp closures



If you have questions, please share them in Q&A

What are the anticipated impacts?

- The department anticipates a four-month closure of the Big Bend bridge over I-44. There will be short duration interstate closures (one weekend for demolition and short term closures for girder placement) as well as one I-44 lane closed in each direction through construction. When the ramps are reconstructed, they will be closed overnight for 10 days. Construction will start next year, but the exact start time is still to be determined.

What is the anticipated timeline?

Event	Time
Preliminary plans	Completed
Public Meeting	January 19, 2021
Project awarded	Fall 2021
Construction begins	Spring 2022
Construction complete	Late fall 2022

How can I Submit my comment? Contacts?



☐ Please submit all comments by February 2, 2021 at 4 p.m.

☐ Share your thoughts on the project here:
<https://www.surveymonkey.com/r/bigbendvpm>

☐ **Contact the project manager by e-mail**
Stuart.McNeil@modot.mo.gov or by phone:
314-370-3104.



THANK YOU FOR
ATTENDING

