

BRIDGE REPLACEMENT BRO-B048(55) ON TARSNEY LAKE BEACH DRIVE
COUNTY PROJECT 3202 COUNTY BID NO. PW-09-2020

ADDENDUM NO. 1
Dated January 8, 2021

Each bidder shall note these revisions to the Bidding Documents and incorporate these revisions in their bid. Each bidder shall acknowledge receipt of this addendum in the Bid Form of the Bidding Documents.

This addendum consists of this page and the following revisions:

1. RESPONSE TO BIDDERS QUESTIONS

Phone call questions from bidders relating to the Contract:

1-1. **Question:** *Can recycled material be used in the asphalt mix?*

Answer: The County allows for 30% reclaimed asphalt in the APWA Type 1-01 and APWA Type 3-01 mixes. Shingles and tire crumbs are not allowed.

1-2. **Question:** *Can asphalt work deviate from construction phasing schedule to produce a better product?*

Answer: Deviations in construction phasing plan will be allowed with the approval of the County during construction if it creates efficiencies and/or cost savings.

2. PROJECT MANUAL

2-1. The Itemized Proposal (Sheets 12 and 13) is replaced in its entirety. The change in on the Form is on Line Item 25 Reinforcing Steel (Grade 60).

3. PLANS

3-1. Summary of Quantities (Sheet 8) Line Item 25 "Reinforcing Steel (Grade 60)" change from 14,010 lbs. to 33,000 lbs.

3-2. Vertical, horizontal, and dowel reinforcing in wall sections (Sheet 9) change from 6" spacing to 12" spacing.

The Bidder is reminded to acknowledge the Addenda on Sheet 13.

ADDENDUM 1 Prepared by: Chris Jenkins with Jackson County Public Works

END OF ADDENDUM NO. 1

ITEMIZED PROPOSAL
WORK PERFORMED BY THE CONTRACTOR

LINE	ITEM NO.	DESCRIPTION	UNIT	QUANTITY	UNIT PRICE	AMOUNT
BID ITEMS						
1	201	Clearing & Grubbing	L.S.	1		
2	202.30	Removal of Improvements	L.S.	1		
3	203	Embankment in Place	C.Y.	490		
4	206	Cofferdam	L.F.	132		
5	206	Excavation for Structure Class 2 (Bridge Removal)	C.Y.	130		
6	206	Excavation for Structure Class 3 (Storm Water)	C.Y.	37		
7	206	Excavation for Structure Class 4 (Box Culvert)	C.Y.	1019		
8	216.10	Removal of Bridge Structures	L.S.	1		
9	303	Rock Base (18" Layer)	S.Y.	680		
10	303	Rock Base (6" Layer)	S.Y.	680		
11	303	Aggregate Base Course (15" Layer of MoDOT Type 5)	S.Y.	186.3		
12	304	Aggregate Base Course (6" Layer of MoDOT Type 5)	S.Y.	634		
13	2200	APWA Asphaltic Concrete Surface (2" Layer of Type 3-01)	S.Y.	634		
14	2200	APWA Asphaltic Concrete Base (7" Layer of Type 1-01)	S.Y.	634		
15	606.10	Type A Guardrail	L.F.	505		
16	606.10	Type A End Section	EACH	8		
17	611.30	Type 2 Rock Blanket	C.Y.	573		
18	611.50	Light Stone Revetment	S.Y.	284		
19	616	Construction Signs	EACH	22		
20	617.20	Temporary Traffic Barrier	L.F.	240		
21	618	Mobilization	L.S.	1		
22	624	Geotextile Fabric	S.Y.	1207		
23	703	12'x5' Triple Cell RCB	L.F.	36		
24	703	Class B-1 Concrete	C.Y.	141.5		
25	706	Reinforcing Steel (Grade 60)	LBS	33,000		
26	707	Conduit System on Structure (Electrical Conduit)	L.F.	45		
27	707	Conduit System on Structure (12" x 12" Pull Box)	EACH	2		
28	726	24" Dia. Rigid Pipe	L.F.	50		
29	731	Field Inlet 4' x 4'	EACH	1		
30	731	Junction Box 4' x 4'	EACH	1		

ITEMIZED PROPOSAL
WORK PERFORMED BY THE CONTRACTOR

LINE	ITEM NO.	DESCRIPTION	UNIT	QUANTITY	UNIT PRICE	AMOUNT
31	805	Seeding, Mulch & Fertilizer	ACRE	0.2		
32	806.30	Ditch Check	EACH	1		
33	806.70	Silt Fence	L.F.	204		
TOTAL CONTRACTOR - BID						

ACKNOWLEDGEMENT: Each Bidder shall acknowledge receipt of addenda by their signature affixed hereto and addendum noted at the right by number.

Addendum No.(s) _____

Contractor: _____

Phone: _____

Signature: _____

Date: _____

Name: _____

(please print)

Email: _____

(please print)

CLASS B-1 CONCRETE & REINFORCING STEEL SHOWN IN SUMMARY OF QUANTITIES IS FOR CONCRETE DROP INLET & OUTLET (SLABS & WALLS).

ALL CONCRETE & STEEL REINFORCING INSIDE BOX CULVERT BARREL IS INCLUDED IN TABLE OF ESTIMATED QUANTITIES FOR 12'x5' TRIPLE CELL RCB.

ALL REINFORCING STEEL TOTALS ARE ROUNDED TO THE NEAREST 10 LBS.

ESTIMATED QUANTITIES FOR 12'x5' TRIPLE CELL RCB		
ITEM DESCRIPTION	UNITS	TOTAL
CLASS B-1 CONCRETE	CUBIC YARDS	131.0
REINFORCING STEEL	LBS.	19,830

THE TABLE OF ESTIMATED QUANTITIES FOR 12'x5' TRIPLE CELL RCB REPRESENTS QUANTITIES USED IN PREPARING COST ESTIMATE FOR REINFORCED CONCRETE BOX (RCB) CULVERT BARREL. THE RCB BARREL WILL BE MEASURED TO THE NEAREST LINEAR FOOT WITH THE HORIZONTAL DIMENSIONS AS SHOWN ON THE PLANS. PAYMENT FOR ALL CONCRETE AND REINFORCING STEEL WILL BE CONSIDERED COMPLETELY COVERED BY THE CONTRACT UNIT PRICE FOR THE 12'x5' TRIPLE CELL RCB.

SUMMARY OF QUANTITIES				
LINE	ITEM NO.	ITEM DESCRIPTION	UNIT	QUANTITY
BID ITEMS				
1	201	Clearing & Grubbing	L.S.	1
2	202.30	Removal of Improvements	L.S.	1
3	203	Embankment in Place	C.Y.	490
4	206	Cofferdam	L.F.	132
5	206	Excavation for Structure Class 2 (Bridge Removal)	C.Y.	130
6	206	Excavation for Structure Class 3 (Storm Water)	C.Y.	37
7	206	Excavation for Structure Class 4 (Box Culvert)	C.Y.	1,019
8	216.10	Removal of Bridge Structures	L.S.	1
9	303	Rock Base (18" Layer)	S.Y.	680
10	303	Rock Base (6" Layer)	S.Y.	680
11	303	Aggregate Base Course (15" Layer of MoDOT Type 5)	S.Y.	186.3
12	304	Aggregate Base Course (6" Layer of MoDOT Type 5)	S.Y.	634
13	2200 *	APWA Asphaltic Concrete Surface (2" Layer of Type 3-01)	S.Y.	634
14	2200 *	APWA Asphaltic Concrete Base (7" Layer of Type 1-01)	S.Y.	634
15	606.10	Type A Guardrail	L.F.	505
16	606.10	Type A End Section	EACH	8
17	611.30	Type 2 Rock Blanket	C.Y.	573
18	611.50	Light Stone Revetment	S.Y.	284
19	616	Construction Signs	EACH	22
20	617.20	Temporary Traffic Barrier	L.F.	240
21	618	Mobilization	L.S.	1
22	624	Geotextile Fabric	S.Y.	1,207
23	703	12'x5' Triple Cell RCB	L.F.	36
24	703	Class B-1 Concrete	C.Y.	141.5
25	706	Reinforcing Steel (Grade 60)	LBS	33000
26	707	Conduit System on Structure (Electrical Conduit)	L.F.	45
27	707	Conduit System on Structure (12" x 12" Pull Box)	EACH	2
28	726	24" Dia. Rigid Pipe	L.F.	50
29	731	Field Inlet 4' x 4'	EACH	1
30	731	Junction Box 4' x 4'	EACH	1
31	805	Seeding, Mulch & Fertilizer	ACRE	0.2
32	806.30	Ditch Check	EACH	1
33	806.70	Silt Fence	L.F.	204

GENERAL NOTES:

- DESIGN SPECIFICATION:
2017--AASHTO 8TH EDITION
LOAD FACTOR AND RESISTANCE DESIGN
SEISMIC SITE CLASSIFICATION = CLASS C
- * APWA KANSAS CITY METRO CHAPTER SPECIFICATION SECTION 2200 -- PAVING (02/2017)
- FOR MATERIALS AND CONSTRUCTION PROCEDURES THE CONTRACTOR SHALL FOLLOW THE SPECIFICATIONS AS STATED IN "MISSOURI STANDARD SPECIFICATIONS FOR HIGHWAY CONSTRUCTION", 2020, AS AMENDED OR SUPPLEMENTED. IN ADDITION, REFER TO THE JOB SPECIAL PROVISIONS WHICH SUPERSEDE THE "STANDARD SPECIFICATIONS" FOR VARIOUS ITEMS ON THIS PROJECT.
- DESIGN LOADING:
HL-93 MINUS LANE LOAD
25 PSF FUTURE WEARING SURFACE
SOIL WT 120 LBS/ CU. FT.
EQUIVALENT FLUID PRESSURE 45 LBS/ CU. FT.
- DESIGN UNIT STRESSES:
CLASS B1 CONCRETE f'c = 4000 PSI
REINFORCING STEEL (GRADE 60) Fy = 60000 PSI
- REINFORCING STEEL:
MINIMUM CLEARANCE TO REINFORCING STEEL SHALL BE 1½", UNLESS OTHERWISE SHOWN.

MINIMUM LAP LENGTH, UNLESS OTHERWISE SHOWN:
#4 = 21"
#5 = 26"
#6 = 31"
- JOINT FILLER:
ALL JOINT FILLER SHALL MEET THE REQUIREMENTS OF MoDOT STD. SPEC. 1057.7.4 EXCEPT AS NOTED.
- GEOTECHNICAL INVESTIGATION:
A GEOTECHNICAL INVESTIGATION WAS PERFORMED AT THE SITE WITHIN THIS CONTRACT.
- ABBREVIATIONS:
BRG = BEARING
CLR = CLEAR
CONST= CONSTRUCTION
DIA = DIAMETER
EB = END BENT
EF = EACH FACE
ELEV = ELEVATION
EQ = EQUAL
FF = FAR FACE

LF = LINEAR FEET
MAX = MAXIMUM
MIN = MINIMUM
NF = NEAR FACE
P/S = PRESTRESSED
SPA = SPACES
SYMM = SYMMETRICAL
TYP = TYPICAL
- NOTE:
1. QUANTITIES SHOWN ON THESE PLANS ARE NOT GUARANTEED BY THE COUNTY COMMISSION AND ARE USED SOLELY FOR THE PURPOSE OF COMPARING BIDS AND AWARDDING THE CONTRACT, AND MAY OR MAY NOT REPRESENT THE ACTUAL QUANTITIES ON THE JOB, SEE SPECIFICATIONS.
2. ANY ITEMS NOT SHOWN IN BID TAB, SHALL BE CONSIDERED SUBSIDIARY TO OTHER ITEMS.
3. IT SHALL BE THE RESPONSIBILITY OF THE CONTRACTOR TO SUBMIT FORM 106, TO MISSOURI DEPARTMENT OF NATURAL RESOURCES, HISTORIC PRESERVATION PROGRAM FOR ANY BORROW AREAS TO BE USED ON THIS PROJECT.
4. EMBANKMENT IN PLACE SHALL INCLUDE HAULING AND REMOVING MATERIAL FROM/TO THE SITE, PLACEMENT AND COMPACTION OF MATERIAL AND EXCAVATION OF DITCHES TO MAKE GRADE SHOWN ON PLANS. PAYMENT WILL ONLY BE MADE FOR FILL MATERIAL PLACED PER PLAN REQUIREMENTS.
5. EXCAVATION FOR STRUCTURES SHALL INCLUDE ALL CLASSES OF EXCAVATION. NO EXTRA PAYMENT WILL BE MADE FOR ROCK EXCAVATION IF ROCK IS ENCOUNTERED.
6. PROVIDE ¾" CHAMFER AT ALL EXPOSED CONCRETE CORNERS, TYPICAL.
7. ALL DEBRIS AND EXISTING CONCRETE BLOCKS NOT USED WITHIN LIMITS OF GRADING TO BE REMOVED FROM THE PROJECT SITE BY THE CONTRACTOR. CONCRETE BLOCKS & DEBRIS MAY BE BROKEN AND USED FOR TYPE 2 ROCK BLANKET DOWNSTREAM OF NEW BOX CULVERT WHERE SHOWN ON PLANS. ALL EXPOSED REINFORCING STEEL SHALL BE REMOVED FROM SITE.
8. PAYMENT FOR TRASH RACK AND WATER STOPS SHALL BE SUBSIDIARY TO CLASS B-1 CONCRETE BID ITEM. NO DIRECT PAYMENT SHALL BE MADE FOR TRASH RACK OR WATER STOPS. SEE PLAN DETAILS FOR MATERIAL FABRICATION AND INSTALLATION. ALL STEEL MATERIAL SHALL BE SUPPORTED WITH BUY AMERICA CERTIFICATION PRIOR TO INSTALLATION.
9. ASPHALTIC CONCRETE BID ITEMS SHOULD CONFORM TO APWA KANSAS CITY METRO CHAPTER SPECIFICATION SECTION 2200 -- PAVING (02/2017).
10. FOR ROCK BASE BID ITEMS, SEE GEOTECHNICAL REPORT FOR SIZE OF ROCK, THICKNESS OF LAYER AND INSTALLATION REQUIREMENTS.
11. CONDUIT SYSTEM ON STRUCTURE SHALL INCLUDE MATERIAL & INSTALLATION OF A MINIMUM 4" INSIDE DIAMETER CONDUIT TO ACCOMMODATE A 200 PAIR COPPER CABLE & FUTURE UTILITIES. CONDUIT SHALL BE ATTACHED TO DOWNSTREAM FACE OF CULVERT HEADWALL TO NOT RECEIVE DAMAGE FROM PASSING WATER FLOW OR DEBRIS. CONTACT CENTURYLINK FOR BURIED CONDUIT INSTALLATION, BURY DEPTH & ATTACHMENT REQUIREMENTS. ALL HARDWARE & CONDUIT MATERIALS NECESSARY FOR INSTALLATION SHALL BE INCLUDED IN CONDUIT SYSTEM ON STRUCTURE BID ITEM.



AARON DANIEL MCVICKER
PE-2010019574

160515-010
SHEET NO.
8 OF 19

BR0-B048 (55) BRIDGE NO. 4219001
JACKSON COUNTY, MISSOURI

12' X 5' TRIPLE CELL RCB CULVERT
GENERAL NOTES & QUANTITIES

MAKING LIVES BETTER
1901 Pennsylvania Dr.
Columbia, MO 65202-0001
573.442.4537 FAX: 573.442.4543
SURVEYING | ENGINEERING | CONSTRUCTION

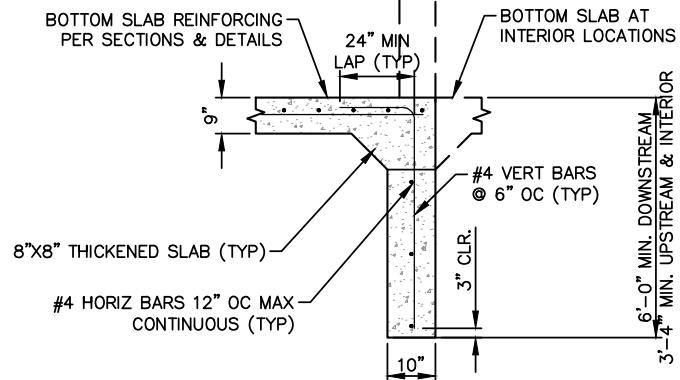
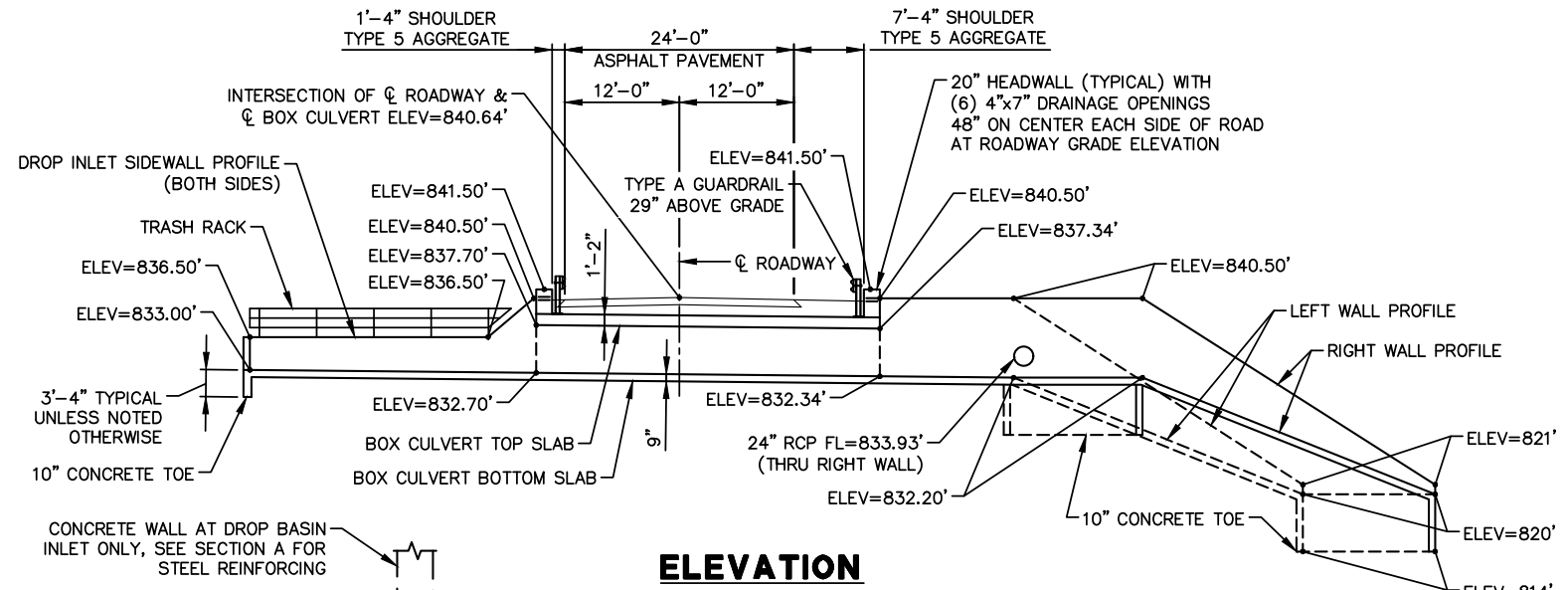
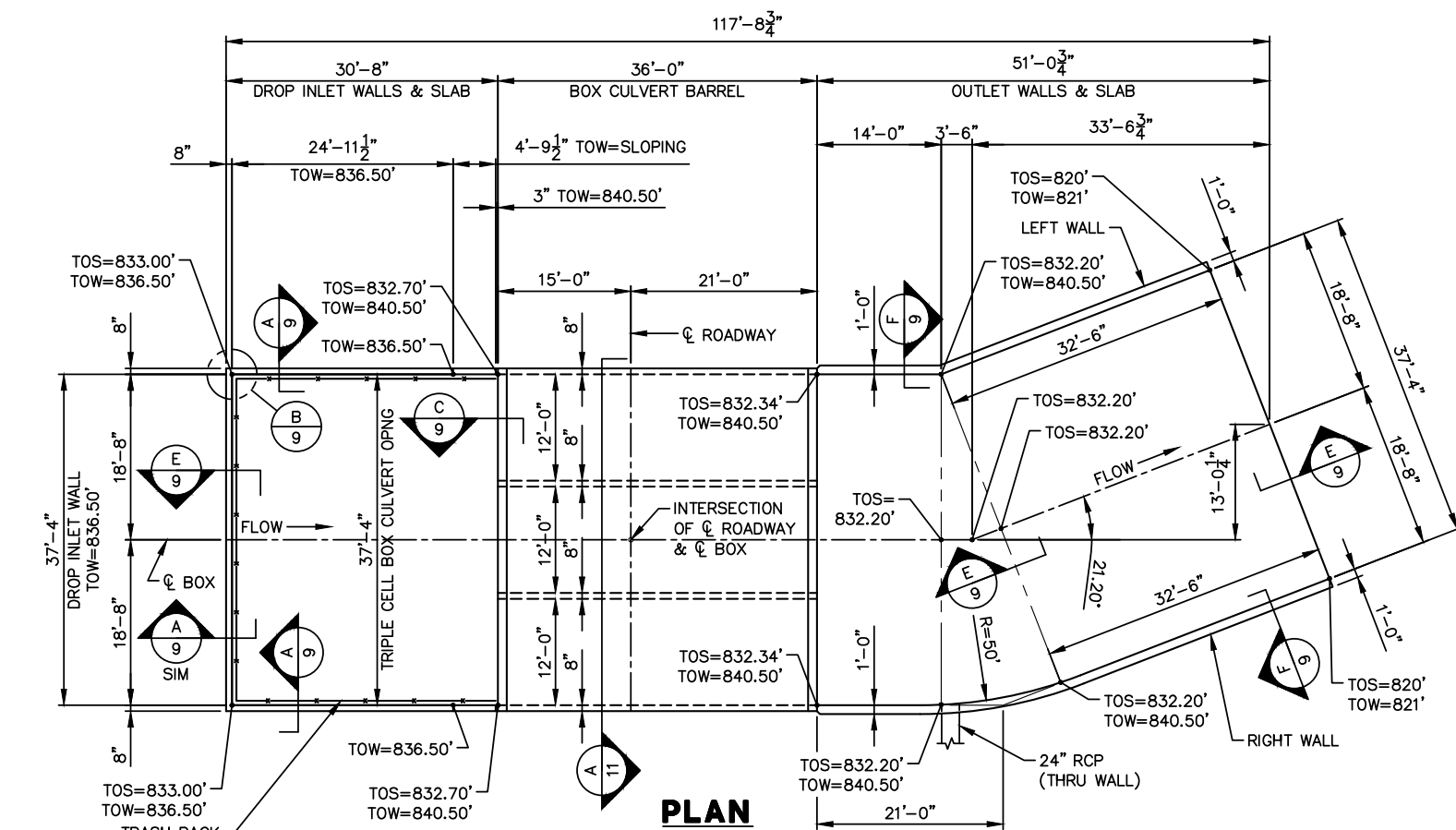
McCLURE™
ENGINEERING & CO.

Designed By: MPG
Drawn By: JLB
Checked By: DRB
Issue Date: 8/21/2019

5	4	3	2	1
				01/08/2021
				Per addendum #1
				REVISIONS
				DATE
				REV.
				BY
				APPD
				ADM

COPYRIGHT-© 2019 -McCLURE ENGINEERING CO.
MISSOURI CERTIFICATE OF AUTHORITY: E-2006023253

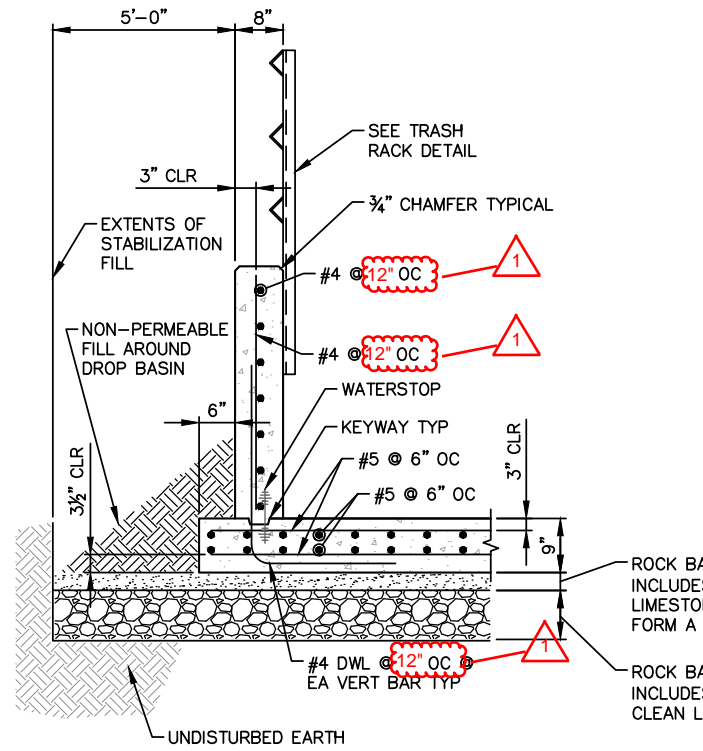
L:\160515-010-CAD\STRUCTURAL\160515-010-S-GPE-01.DWG	DATE: 10/16/2020
LAYOUT: LAYOUT (1)	BY: JBASINGER
XREF DWG1: NONE	XREF DWG2: NONE
XREF DWG3: NONE	XREF DWG4: NONE



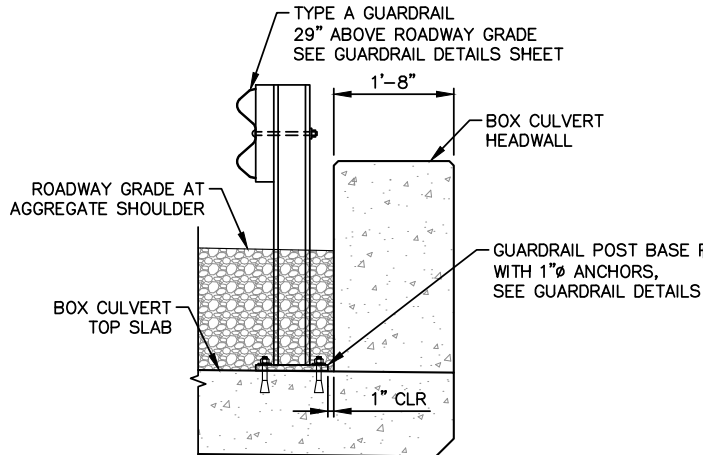
E TOE WALL SECTION
NOT TO SCALE

SHEET NOTES:
1. SEE BOX CULVERT SECTIONS & DETAILS SHEET FOR ADDITIONAL INFORMATION.
2. ALL CONCRETE & REINFORCING STEEL QUANTITIES FOR PORTIONS OUTSIDE LIMITS OF BOX CULVERT BARREL ARE INCLUDED IN SUMMARY OF QUANTITIES ITEM #25 & #26.

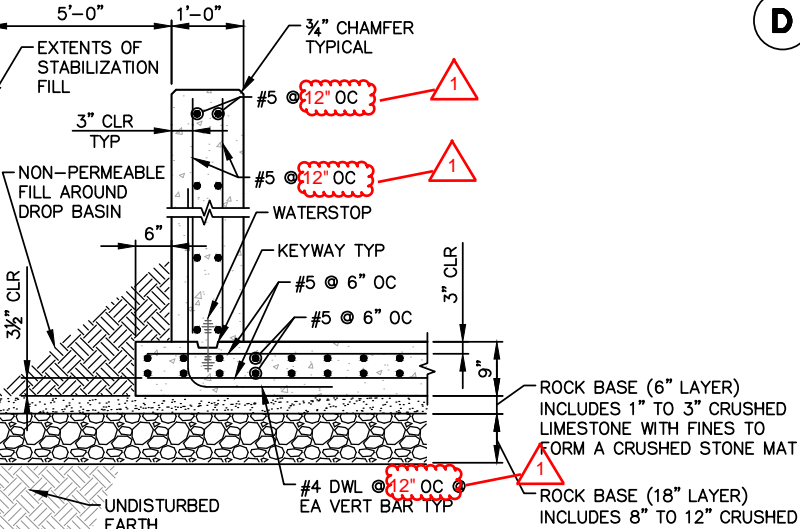
ABBREVIATIONS:
CLR = CLEAR
EA = EACH
ELEV = PROFILE ELEVATION
HORIZ = HORIZONTAL
MAX = MAXIMUM
MIN = MINIMUM
OC = ON CENTER
OPNG = OPENING
REINF = REINFORCING
TOS = TOP OF BOX CULVERT BOTTOM SLAB ELEVATION
TOW = TOP OF WALL ELEVATION
TYP = TYPICAL
VERT = VERTICAL



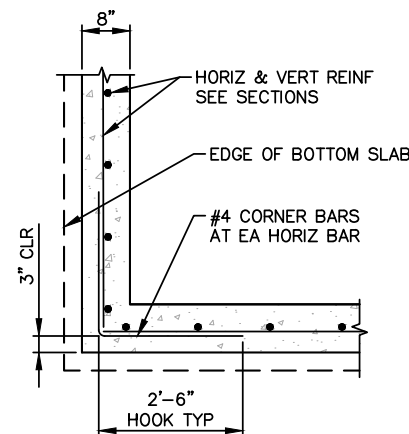
A DROP INLET WALL SECTION
NOT TO SCALE



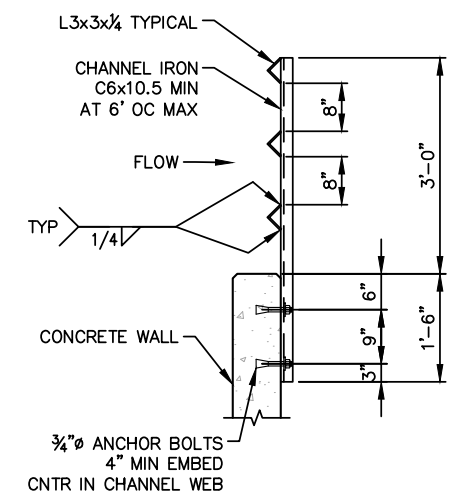
C BOX CULVERT GUARDRAIL DETAIL
NOT TO SCALE



F OUTLET WALL SECTION
NOT TO SCALE



B DROP INLET CORNER DETAIL
NOT TO SCALE



TRASH RACK GENERAL NOTES:
1. ALL STEEL SHALL BE GALVANIZED.
2. ALL MATERIAL SHALL BE PRE-ASSEMBLED, NO FIELD WELDING.
3. ANCHOR BOLTS SHALL BE 3/4" STAINLESS STEEL EXPANSION ANCHORS.

D TRASH RACK DETAIL
NOT TO SCALE



AARON DANIEL MCVICKER
PE-2010019574

Designed By: MPG	Drawn By: JLB	Checked By: DRB	Issue Date: 8/21/2019
Per addendum #1	REVISIONS	DATE	BY
1	01/08/2021	MPG	ADM
2			
3			
4			
5			

McCLURE™
ENGINEERING & CO.

1901 Pennsylvania Dr.
Columbia, MO 65202-0001
573.442.4537 FAX: 573.442.4543

MAKING LIVES BETTER

SURVEYING | ENGINEERING | CONSTRUCTION

BRO-B048 (55) BRIDGE NO. 4219001
JACKSON COUNTY, MISSOURI

12' X 5' TRIPLE CELL RCB CULVERT
BOX CULVERT PLAN & ELEVATION

160515-010
SHEET NO. 9 OF 19