



## ADDENDUM NUMBER 2

Project Number **CMAQ 3319(412), City Project 70171305**

Project Title **I-35 and Chouteau Parkway  
Interchange Improvements**

ISSUE DATE: **11/12/2020**

Bidders are hereby notified that the Bidding and Contract Documents for the above project, for which Bids are to be received on **November 18, 2020**, are amended as follows:

Information to Bidders The following is provided to Bidders for information only:

1. Agenda of the pre-bid conference meeting held on November 4, 2020 are provided.
2. Updated utility information related to existing and proposed Everygy systems are shown on sheet

Q1.	Bid Item No. 15, 672 LF Concrete Safety Barrier (Type C Pier Protection), will the wall be measured for payment along each fact (traffic and trail sides).
A1.	<b>The safety barrier is measured along the back of each wall (refer to spec section 03617). There is a total of four safety barriers.</b>
Q2.	Bid Item No. 15, 672 LF Concrete Safety Barrier (Type C Pier Protection), can the City provide a plan view that details the beginning and ending station for the Type C Pier Protection.
A2.	<b>Start and stop stations have been added to sheet 10 and sheet 12. A note has been added to detail 1 and detail 2 on sheet 36 describing the height transition distance and requirements.</b>
Q3.	The unit prices bid form is different in the spec versus the excel file that is upload on the KCMO plan room in the "bid packet" folder.
A3.	<b>Section 00412 Unit Prices is to be replaced with the attached revised document.</b>
Q4.	Sheet 21 call for a "Decorative Iron Fence" on top of the walls and refers to the specifications. The specifications have several styles of fences described but not a decorative iron fence. This is not enough information to be able to bid the fence correctly. Please specify a particular fence or equal, or otherwise give us more direction.
A4.	<b>Specification section 02308 Fencing is to be replaced with the attached revised documents. The intent of the fencing is to match existing fencing located along the south side of Chouteau Parkway east of NE Parvin Road.</b>

Q5.	It appears that the large block retaining wall bid quantity is reflecting all square feet of face instead of just "exposed face" which is the typical measurement and payment method. Please verify.
<b>A5.</b>	<b>Measurement and payment of the large block retaining walls is from the bottom of the bottom row of blocks to the top of the cap block. Refer to section 02837 Large Block Retaining Wall.</b>
Q6.	Plan Sheet 36 of 102, Sections 1 & 2 show what appears to be a footing directly beneath the Type C Barrier. Is this to be included in the bid item for type C wall? If so can you please provide the dimensions and reinforcing details.
<b>A6.</b>	<b>The concrete pavement under the concrete safety barrier is subsidiary to the Concrete Safety Barrier bid item. Dimensioning and reinforcing details have been added to detail 1 and detail 2 on sheet 36.</b>
Q7.	MoDOT Standard 617.10K does not show any reinforcing steel in the Type C wall, however, MoDOT has been known to require steel at pier protection locations. Can you confirm the reinforcing requirements at the Type C Pier Protection?
<b>A7.</b>	<b>Reinforcing details and requirements are shown on MoDOT drawing 617.10M (sheet 3 of 11).</b>
Q8.	Plan sheet 21 of 102 note 3 of the retaining wall calls out a fence on top of the wall. Is this correct?
<b>A8.</b>	<b>Fencing is required on top of retaining walls. Fencing is subsidiary to the Large Block Retaining Wall bid item.</b>
Q9.	Plan sheet 36 of 102 shows a fence on top of the concrete barrier. Is this correct, and if so what type of fence and how is it paid for?
<b>A9.</b>	<b>Fencing is required on top of concrete barrier wall as shown on detail 1 and detail 2 on sheet 36. Additional fencing information has been added to these details. Refer to attached revised section 02308 Fencing. The intent of the fencing is to match existing fencing located along the south side of Chouteau Parkway east of NE Parvin Road.</b>
Q10.	The quantity of Type 2 Rock Blanket appears to be in error based on our takeoff. We are coming up with a much smaller quantity.
<b>A11.</b>	<b>The quantity of the Type 2 Rock Blanket has been revised on the plans and section 00412 Unit Prices.</b>

### Bidding Requirements

1. N/A

### Contracting Requirements

1. N/A

### Specifications

1. Replace 00412 Unit Prices in its entirety.
2. Replace 02308 Fencing in its entirety.

Drawings: Replace the following drawings

1. Sheet 3 General Notes, Legend, & Summary of Roadway Quantities
2. Sheet 8: NE Chouteau Parkway Plan & Profile
3. Sheet 10: NE Chouteau Parkway Plan & Profile
4. Sheet 12: NE Chouteau Parkway Plan & Profile
5. Sheet 36: Roadway Details

**NOTE: Bidders must acknowledge receipt of this Addendum by listing the number and date, where provided, on the Bid Form - Document 00410.**

**UNIT PRICES****Project Number CMAQ 3319(412), City Project 70171305-ADDENDUM 2****NOTE: IN THE EVENT OF DISCREPANCY, UNIT PRICE SHALL GOVERN.**

Item No.	Unit	Quantity	Item Description:	Unit Price	Extension
<b>ROADWAY</b>					
1	LS	1	Mobilization		
2	LS	1	Contractor Furnished Surveying		
3	AC	3.3	Clearing, Grubbing, & Demolition		
4	CY	4489	Unclassified Excavation		
5	CY	59	Embankment		
6	SY	8857	Subgrade Stabilization (9", Fly Ash and Compaction)		
7	SY	8704	Untreated Compacted Aggregate (6" - Roadway)		
8	SY	2048	Untreated Compacted Aggregate (4" - Median & Sidewalk)		
9	SY	2928	Milling & Overlay (2")		
10	SY	7574	Asphaltic Concrete Base: RC-Type 1-01 (8" - Roadway)		
11	SY	7574	Asphaltic Concrete Surface: Type 5-01 (2" - Roadway)		
12	SY	598	Asphaltic Concrete Base: RC-Type 1-01 (4" - Roadway)		
13	LF	2396	Concrete Curb & Gutter (Type CG)		
14	LF	615	Concrete Curb (Type C)		
15	LF	672	Concrete Safety Barrier (Type C Pier Protection)		
16	VSF	2165	Large Block Retaining Wall		
17	SY	266	Concrete Median (4")		
18	SY	550	Concrete Median (4") (Stamped & Colored)		
19	SY	1431	Concrete Multi Use Trail (6")		
20	SY	209	Concrete Sidewalk Ramp		
21	SY	341	Type 2 Rock Blanket		
22	EA	1	KCMO Type 1 Curb Inlet (5'x4')		
23	EA	1	KCMO Type 1 Curb Inlet (8'x4')		
24	EA	1	KCMO Type 2 Curb Inlet (5'x4')		
25	EA	1	KCMO Junction Box (4'x4')		
26	EA	4	MODOT Type A Drop Inlet (2'x2')		
27	EA	2	MODOT Type S Drop Inlet (5'x3')		
28	EA	1	MODOT Type E Drop Inlet (4'x4')		
29	LF	28	12" RCP (Class III)		
30	LF	30	15" RCP (Class III)		
31	LF	9	18" RCP (Class III)		
32	EA	2	MoDOT Type A Pipe Collar		
33	EA	1	Connect to Existing RCB		
34	EA	1	Connect to Existing Storm Sewer Structure		
35	EA	13	Curb/Drop Inlet Protection		
36	EA	5	Tree Protection		
37	EA	2	Culvert Inlet Protection		
38	EA	2	Project Information Signs		

Item No.	Unit	Quantity	Item Description:	Unit Price	Extension
TEMPORARY TRAFFIC CONTROL					
39	EA	7	Temporary Sign, G020-1D		
40	EA	9	Temporary Sign, G020-2		
41	EA	21	Temporary Sign, W020-1		
42	EA	2	Temporary Sign, W020-2D		
43	EA	4	Temporary Sign, W20-5L		
44	EA	1	Temporary Sign, W20-5R		
45	EA	3	Temporary Sign, W4-2R		
46	EA	3	Temporary Sign, W4-2L		
47	EA	2	Temporary Sign, W9-3T		
48	EA	1	Temporary Sign, W20-5R		
49	EA	1	Temporary Sign, R1-1		
50	EA	3	Temporary Sign, R1-2		
51	EA	8	Temporary Sign, R2-1		
52	EA	2	Temporary Sign, R3-1		
53	EA	1	Temporary Sign, R3-2		
54	EA	2	Temporary Sign, R3-4		
55	EA	2	Temporary Sign, R3-5L		
56	EA	4	Temporary Sign, R3-7L		
57	EA	1	Temporary Sign, R3-7R		
58	EA	3	Temporary Sign, R4-7		
59	EA	3	Temporary Sign, R11-2		
60	EA	16	Temporary Sign, M1-4		
61	EA	1	Temporary Sign, M6-3		
62	EA	5	Temporary Sign, M6-1		
63	EA	3	Temporary Sign, M5-1L		
64	EA	16	Temporary Sign, M3-1		
65	EA	9	Temporary Sign, M4-8		
66	EA	2	Temporary Sign, M04-8a		
67	EA	4	Temporary Sign, CW6-3		
68	EA	2	Temporary Sign, CW12-1		
69	EA	3	Temporary Sign, E5-2a		
70	EA	500	Channelizers		
71	LF	6750	Temporary Pavement Marking - Striping		
72	LF	72	Temporary Pavement Marking - Stop Bar		
73	LF	465	Pavement Marking Removal - Striping		
74	LF	68	Pavement Marking Removal - Stop Bar		
75	EA	10	Type III Barricades		
76	EA	3	Changeable Message Signs		
SIGNAGE					
77	SF	560	Flat Sheet Sign		
78	EA	28	Sign Post		
79	EA	2	Tubular Support - Type S-1312 (70'-0" Span)		

Item No.	Unit	Quantity	Item Description:	Unit Price	Extension
PAVEMENT MARKING					
80	LF	3,200	Preformed Thermoplastic Pavement Marking, 4 In. White		
81	LF	1,160	Preformed Thermoplastic Pavement Marking, 4 In. Yellow		
82	LF	950	Preformed Thermoplastic Pavement Marking, 6 In. White		
83	LF	800	Preformed Thermoplastic Pavement Marking, 12 In White (Crosswalks)		
84	LF	40	Preformed Thermoplastic Pavement Marking, 12 In. Yellow		
85	LF	290	Preformed Thermoplastic Pavement Marking, 24 In. White		
86	EA	22	Preformed Thermoplastic Pavement Marking, Yield Line Triangles		
87	EA	16	Preformed Thermoplastic Pavement Marking, Left Arrow		
88	EA	6	Preformed Thermoplastic Pavement Marking, Right Arrow		
89	EA	2	Preformed Thermoplastic Pavement Marking, Thru Arrow		
ITS					
90	LF	572	Conduit (3") Pushed		
91	LF	629	Conduit (3") Trench		
92	LF	761	Fiber Single Mode		
93	EA	4	Service Box (KCMO Type II)		
TRAFFIC SIGNALS - CHOUTEAU & I-35					
94	LS	1	Cabinet, Controller, Conflict Monitor		
95	LS	1	Electric Service		
96	EA	3	Pedestal Poles (10')		
97	EA	1	Type CL - Mast Arm (35')		
98	EA	1	Type CL - Mast Arm (48')		
99	EA	1	Type BL - Mast Arm (42')(32')		
100	EA	1	Type BL - Mast Arm (50')(30')		
101	EA	4	Signal Pole Foundation		
102	EA	3	Pedestal Pole Foundation		
103	EA	1	Pull Box (Class 1)		
104	EA	2	Pull Box (Class 2)		
105	EA	5	Pull Box (Class 3)		
106	EA	9	Ground Rods (1/2" x 10') w/ clamps		
107	LF	96	Conduit (2") Trench		
108	LF	40	Conduit (3") Trench		
109	LF	187	Conduit (3") Pushed		
110	LF	262	Conduit (4") Trench		
111	LF	235	Conduit (4") Pushed		
112	LF	144	Cable (1c#2)		
113	LF	1917	Cable (3c#10)		
114	LF	1138	Cable (2c#16)		
115	LF	1138	Cable (5c#16)		
116	LF	4814	Cable (7c#16)		
117	LF	2000	Cable (COAX)		
118	LF	2000	Cable (3c#16)		
119	LF	4	Accessible Pedestrian Push Button Assembly		
120	LS	1	Radar Detection System		
121	EA	4	Pedestrian Countdown Heads		
122	EA	13	Vehicle Signal Heads (3 Section - 12")		
123	EA	2	Vehicle Signal Heads (4 Section - 12")		

Item No.	Unit	Quantity	Item Description:	Unit Price	Extension
124	EA	6	Illuminated Street Name Sign		
125	LS	1	Paint Poles		
126	EA	4	Signs (Mast arm mounted)		
127	EA	4	Signs (Pedestrian crossing)		
128	LS	1	Remove Existing Equipment (I-35)		
TRAFFIC SIGNALS - CHOUTEAU & CLEVELAND					
129	EA	1	Pad Mounted Cabinet Assembly Housing, Controller w/ Software and Accessories and BBS/UPS		
130	EA	4	Pedestal Poles (10')		
131	EA	4	Signal Poles (32'-6")		
132	EA	2	Mast Arm (28')		
133	EA	1	Mast Arm (30')		
134	EA	1	Mast Arm (38')		
135	EA	4	Luminaire Arm LED		
136	EA	5	Service Box (Type I)		
137	EA	1	Service Box (Type II)		
138	EA	4	Signal Pole Foundation		
139	EA	4	Pedestal Pole Foundation (10')		
140	EA	1	Controller Base (Type P)		
141	LF	410	Conduit (2")		
142	LF	140	Conduit (3")		
143	LF	400	Conduit (4")		
144	LF	100	Conduit (2") - Power		
145	LF	20	Conduit (3") - Power		
146	LF	100	Cable (1c#6, ground)		
147	LF	1292	Cable (2c#14)		
148	LF	1402	Cable (5c#14)		
149	LF	1475	Cable (7c#14)		
150	LF	100	Cable (#4 AWG, service power)		
151	LF	1480	Video Cable (PTZ)		
152	LF	740	6c (radar cable)		
153	LF	740	2-1c#14 (IISNS)		
154	LF	762	M-138 (Opticom)		
155	EA	7	Accessible Pedestrian Push Button Assembly		
156	EA	740	Radar Cable		
157	EA	4	Radar Detection		
158	EA	8	Pedestrian Countdown Heads		
159	EA	14	Vehicle Signal Heads (3 Section - 12")		
160	EA	4	IISNS (relocated)		
161	EA	7	Signs (Pedestrian crossing)		
162	EA	8	Ground Rods (1/2" x 10') w/ clamps		
163	EA	1	Remove Existing Signal		

Bidder: \_\_\_\_\_

Item No.	Unit	Quantity	Item Description:	Unit Price	Extension
STREET LIGHTING					
164	EA	17	Type "A" Phillips Gardco LED LED Light Fixture		
165	EA	17	Type "A" Pole 35'-0" Mounting Height		
166	EA	1	Type "B" Phillips Gardco LED Light Fixture (Twin) On Traffic Signal Pole		
167	EA	4	Type "C" Lithonia 400 watt HPS on MoDOT Traffic Signal Pole		
168	EA	2	Type "D" Phillips Gardco LED Light Fixture On MoDOT Traffic Signal Pole		
169	EA	8	Underpass Light Fixture Type "F" 39 Watt LED		
170	EA	4	Underpass Light Fixture Type "E" 73 Watt LED		
171	LF	2500	#10 RHW/USE Internal Pole Wire		
172	LF	750	2 #8 RHH/RHW/USE, 1 #8 CU GND., 2CID		
173	LF	2250	2 #4 RHH/RHW/USE, 1 #4 CU GND., 2CID		
174	EA	50	Fuse Kits		
175	EA	25	Non-Fused Fuse Kits		
176	EA	17	Cable Retainers		
177	EA	17	Lighting Screw in Pole Base		
178	EA	33	ID Tags		
179	EA	17	Pull Box		
180	EA	8	12"x12"x6" Weatherproof Junction Box		
181	LF	3000	Trench and Backfill		
182	LS	1	Removal of Luminaire, Arm, and Metal Pole (Qty. 26)		
LANDSCAPING					
183	SY	1791	Sod		
184	EA	10	Ornamental Tree (1.5" Caliper)		
185	EA	5	Street Tree (2.5" Caliper )		
186	EA	179	Shrub (5 Gallon)		
187	EA	33	Grass (3 Gallon)		
188	EA	69	Grass (1 Gallon)		
189	LF	950	Cultivated Landscape Edge		
190	SF	6665	Hardwood Mulch (3" Thick)		
			Total Unit Prices: (LAST PAGE ONLY)		

Note: May be printed, for manual fill-in, or filled in on electronic excel spreadsheet version.





## **Pre-Bid Meeting Agenda**

I-35 and Chouteau Parkway Interchange Improvements

Federal Project No.: CMAQ 3319(412)

City Project No.: 70171305

### **I. Introductions**

- James Wang, P.E., KCMO Parks & Recreation, City Project Manager
- Rebecca Martinez, KCMO Parks & Recreation, Contract Administration
- Mike Haake, P.E., Walter P Moore, Consulting Engineer
- TranSystems

### **II. Project Scope & Overview**

- Roadway widening for traffic & pedestrians
- Full depth reconstruction and mill & overlay
- MoDOT cost share
- KCMO Public Works, KCMO Parks & Recreation, & MoDOT requirements.

### **III. Utility Information**

- Refer to Section 20070 for contact information
- Evergy: Currently relocating equipment at northwest corner of Chouteau & Cleveland.
- Google: One vault at southwest corner of Chouteau & Cleveland.
- AT&T: Currently relocating one vault at northeast corner of Chouteau & Cleveland.

### **IV. General Requirements**

- Bid Opening: 2pm, November 18<sup>th</sup>, 2020
- Notice to Proceed: Anticipated March/April of 2021
- Calendar days: 329 days
- Liquidated Damages: Refer to Section 00210
- Prevailing Wage project
- Addendum to be posted no later than November 13<sup>th</sup>, 2020.

### **V. Traffic / Construction Phasing**

- Limited duration of I-35 ramp closures. Refer to Section 00210 for durations and liquidated damages.
- Maintain continuous traffic along Chouteau throughout construction
- Temporary traffic control signage & equipment will be required.
- Construction phasing shown on plans. Changes to the plans are to be pre-approved and meet requirements described on plans.

### **VI. Questions?**

## 02308 FENCING

### A. GENERAL

All the requirements of the Kansas City Metropolitan Chapter of the American Public Works Association (APWA), *Standard Specifications and Design Criteria* apply as amended and supplemented by the Department of Public Works of the City of Kansas City, Missouri (KCMO). Sections of said Specifications will be hereinafter referred to as "APWA-KCMO." The City's current standards can be found online under the Kansas City Public Works Department website under "Public Works Design & Construction Standards:"

<http://kcmo.gov/publicworks/design-construction-standards/>

Fencing shall conform to APWA-KCMO Section 2308 with the following modifications, deletions, or additions. All provisions that are not so amended, removed, or supplemented remain in full force and effect.

1. Section 2308.2 shall be replaced with the following:

#### **Materials:**

- A. **Black Decorative Fencing:** Black powder coated galvanized steel with 3/4" square railings & pickets, 42" picket height, 3-rail system with top rail, commercial rated, conforming to ASTM A653. All fencing materials and styles on the project shall match.

2. Section 2308.3 shall be replaced with the following:

#### **Construction Details:**

- A. Fencing shall be installed at the locations shown on the plans or as directed by the Engineer.
- B. Retaining wall fencing installation, details, and anchoring systems shall be coordinated with retaining wall block manufacturer, Contractor's retaining wall engineer, and shown on retaining wall shop drawings.
- C. Concrete safety barrier fencing installation, details, and anchoring systems shall be coordinated with concrete safety barrier and is the responsibility of Contractor.
- D. Installation of fencing shall be in accordance with the recommendations and requirements of the fencing manufacturer and approved shop drawings.

3. Section 2308.4 shall be replaced with the following:

#### **Measurement and Payment:**

- A. No separate measure and payment will be made for fencing. All work associated with fencing is subsidiary to other bid items.

**END OF SECTION**



Nov. 11, 2020 - 12:56pm  
X:\M08\2017\17001-00 Chouteau Parkway Trail Connection\Civil\Std\Sheets\03-17001-01-LG.dwg

GENERAL NOTES:

1. THE CONSTRUCTION COVERED BY THESE PLANS SHALL CONFORM TO THE CURRENT "CITY STANDARDS" AND SPECIFICATIONS OF THE PARKS & RECREATION DEPARTMENT, KANSAS CITY, MISSOURI, EXCEPT AS NOTED.
2. ALL WORK WITHIN THE MODOT ROW SHALL CONFORM TO THE REQUIREMENTS OF THE 2020 MISSOURI STANDARD SPECIFICATIONS FOR HIGHWAY CONSTRUCTION UNLESS OTHERWISE NOTED IN THE PLAN AND/OR PROJECT SPECIFICATIONS.
3. THIS PROJECT WAS BASED ON BOUNDARY AND TOPOGRAPHIC SURVEY PROVIDED LOVELACE AND ASSOCIATES.
4. ALL MANHOLES, CATCH BASINS, UTILITY VALVES, AND METER PITS SHALL BE ADJUSTED OR REBUILT TO GRADE AS REQUIRED.
5. ASPHALTIC CONCRETE SURFACE COURSE SHALL CONTAIN ONLY VIRGIN MATERIALS. BASE COURSE MAY CONTAIN RECYCLED CONTENT.
6. IT SHALL BE THE RESPONSIBILITY OF THE CONTRACTOR TO CONTROL DOWNSTREAM EROSION AND SILTATION DURING ALL PHASES OF CONSTRUCTION. EROSION CONTROL SYSTEMS AND PROCEDURES SHALL BE IN PLACE PRIOR TO ANY GRADING OPERATIONS.
7. PRIOR TO ORDERING PRE-CAST STRUCTURES, SHOP DRAWINGS ARE TO BE SUBMITTED TO THE DESIGN ENGINEER FOR APPROVAL.
8. THE CONTRACTOR SHALL BE RESPONSIBLE FOR RECORDING ROCK ELEVATIONS AT 25 FOOT (MAXIMUM) INTERVALS WHERE ENCOUNTERED, AND FURNISHING THIS INFORMATION TO THE DESIGN ENGINEER FOR USE ON "AS-BUILT" PLANS.
9. THE LOCATIONS OF EXISTING UTILITIES AS SHOWN ARE APPROXIMATE. IT SHALL BE THE RESPONSIBILITY OF THE CONTRACTOR TO VERIFY THE LOCATIONS OF ALL EXISTING UTILITIES.
10. SUBSURFACE EXPLORATION FOR THE DETERMINATION OF AND/OR THE LOCATION OF EXISTING ROCK HAS BEEN MADE AND IS INCLUDED IN THE PROJECT SPECIFICATIONS.
11. THE CITY OF KANSAS CITY, MISSOURI SHALL PROVIDE EARTHWORK AND MATERIAL TESTING SERVICES.
12. UTILITIES CROSSING PUBLIC STREETS SHALL CONFORM TO THE FLOWABLE FILL REQUIREMENTS AS PER THE REVISED STANDARD SPECIFICATIONS SECTION 2602.2i; WITH SUPPLEMENT.
13. CONSTRUCTION STAKING SHALL BE PROVIDED BY THE CONTRACTOR AS OUTLINED IN THE SPECIFICATIONS.
14. CONTRACTOR SHALL CONTACT AND COORDINATE WITH APPROPRIATE UTILITY COMPANY FOR REMOVALS OR RELOCATIONS OF UNDERGROUND MAINS, UNDERGROUND SERVICE LINES AND ABOVE GROUND UTILITY APPURTENANCES (SUCH AS POWER POLES) SEEN OR UNSEEN WITHIN THE GRADING LIMITS THAT ARE IN CONFLICT WITH PROPOSED CONSTRUCTION.
15. ALL EXISTING ROADWAY SURFACES WITHIN THE GRADING LIMITS ARE TO BE REMOVED UNLESS INDICATED OTHERWISE.
16. ALL EXISTING STORM SEWER PIPE AND STRUCTURES SEEN OR UNSEEN WITHIN THE GRADING LIMITS SHALL BE REMOVED UNLESS INDICATED ON PLANS TO REMAIN.
17. ALL EXISTING DRIVEWAYS WITHIN THE GRADING LIMITS ARE TO BE REMOVED AND REPLACED AS INDICATED ON THE PLANS.
18. ALL EXISTING SIDEWALKS WITHIN THE GRADING LIMITS ARE TO BE REMOVED UNLESS INDICATED ON THE PLANS TO REMAIN IN PLACE.
19. ALL LANDSCAPING, INCLUDING SHRUBS, WITHIN THE GRADING LIMITS SHALL BE REMOVED AS NECESSARY FOR PROPOSED CONSTRUCTION UNLESS INDICATED ON THE PLANS TO LEAVE IN PLACE. SALVAGE ITEMS TO PROPERTY OWNERS AS REQUESTED.
20. SAWCUT EXISTING PAVEMENT, INCLUDING SIDEWALKS, FULL DEPTH WHERE IT MEETS NEW PAVEMENT.
21. CONTRACTOR SHALL RESET ALL PROPERTY SURVEY MONUMENTS, INCLUDING PROPERTY CORNERS, SECTION CORNERS, AND KCMO BENCHMARKS, DESTROYED OR REMOVED DUE TO CONSTRUCTION.
22. EXISTING WATER SERVICE LINES AND WATER MAINS WITHIN THE PROJECT LIMITS ARE TO BE PROTECTED. ALL WORK RELATED TO WATER MAINS AND WATER SERVICE LINES IS TO CONFORM TO THE STANDARD AND REQUIREMENTS OF THE CITY OF KANSAS CITY WATER SERVICES DEPARTMENT.
23. THE CONTRACTOR IS RESPONSIBLE FOR COMPLETING THE REMAINING PORTIONS OF THE STORM WATER POLLUTION PREVENTION PLAN (SWPPP) FOR WHICH HE IS RESPONSIBLE PRIOR TO CONSTRUCTION. THE CONTRACTOR IS RESPONSIBLE FOR MAINTAINING AND UPDATING THE SWPPP AS REQUIRED BY FEDERAL, STATE, AND CITY REGULATIONS. REFER TO PROJECT SPECIFICATION SECTION 01563 FOR ADDITIONAL INFORMATION.

TYPICAL ABBREVIATIONS

●	- AT	PC	- POINT OF CURVATURE
&	- AND	PI	- POINT OF INTERSECTION
ADA	- AMERICANS WITH DISABILITIES ACT	R	- PROPERTY LINE
APWA	- AMERICAN PUBLIC WORKS ASSOCIATION	PROP	- PROPOSED
APPROX	- APPROXIMATE	PVC	- POINT OF CURVATURE ON VERTICAL CURVE
AWWA	- AMERICAN WATER WORKS ASSOCIATION	PVCL	- POLYVINYL CHLORIDE PIPE
BM	- BENCHMARK	PVT	- POINT OF TANGENCY ON VERTICAL CURVE
CJ	- CONTROL JOINT	QTY	- QUANTITY
CL	- CENTER LINE	R	- RADIUS
CMP	- CORRUGATED METAL PIPE	RCAP	- REINFORCED CONCRETE ARCH PIPE
CU FT	- CUBIC FEET	RCP	- REINFORCED CONCRETE PIPE
CU YD	- CUBIC YARD	RE	- REFERENCE
DIA	- DIAMETER	REV	- REVISION
DIP	- DUCTILE IRON PIPE	R/W	- RIGHT OF WAY
DWG	- DRAWING	ROW	- RIGHT OF WAY
EA	- EACH	RWE	- RETAINING WALL EASEMENT
EL	- ELEVATION	SF	- SQUARE FEET
EQ	- EQUAL	SSD	- STOPPING SIGHT DISTANCE
ESMT	- EASEMENT	SY	- SQUARE YARD
FH	- FIRE HYDRANT	STA	- STATION
FL	- FLOW LINE	STD	- STANDARD
FT	- FEET	TCE	- TEMPORARY CONSTRUCTION EASEMENT
K	- RATE OF VERTICAL CURVATURE	THRU	- THROUGH
KCMO	- CITY OF KANSAS CITY MISSOURI	TYP	- TYPICAL
LF	- LINEAR FEET	VC	- VERTICAL CURVE
L/L	- LOT LINE	W/	- WITH
MH	- MANHOLE	W/O	- WITHOUT
MUTCD	- MANUAL ON UNIFORM TRAFFIC CONTROL DEVICES	WL	- WATER LINE
NA	- NOT APPLICABLE	WM	- WATER METER
NTS	- NOT TO SCALE	WWF	- WIELDED WIRE FABRIC

SURVEY LEGEND

□	SECTION CORNER	●MB	MAILBOX
○	PROPERTY CORNER	*FOM	FIBER OPTIC MARKER
⊕	BENCHMARK	⊕TL	TRAFFIC SIGNAL LIGHT
△	CONTROL POINT	●BOL	BOLLARD
•R/W Marker	RIGHT-OF-WAY MARKER	⚡YL	YARD LIGHT
○G-POLE	GUY POLE	●CW	CROSSWALK SIGNAL
⌀TP	TELEPHONE POLE	—	SIGN
⌀PP	POWER POLE	□A/C	AC UNIT
⚡LP	LIGHT POLES	*GP	GATE POST
○E-Ped	ELECTRIC PEDESTAL	●GRD	GUARD POST
○T-Ped	TELEPHONE PEDESTAL	■RD	ROOF DRAIN
⚡	ELECTRIC TRANSFORMER	⊕	MANHOLE (SAN., STORM, TEL.)
⊕	ELECTRIC MANHOLE	⊕	TREE (DIA.)
○CTV-Ped	CABLE TELEVISION PEDESTAL	⊕	PINE TREE (DIA.)
↓	ANCHOR	⊕	BUSH
●CO	CLEANOUT	⊕TS	TORNADO SIREN
●SCV	SPRINKLER CONTROL VALVE	*WS	WATER SPIGOT
⊕	COMMUNICATION VAULT	●FP	FLAG POLE
⊕	ELECTRIC VAULT	⊕WP	WOOD POST
⊕	ELECTRIC BOX	●GP	GOALPOST
⊕	STREET LIGHT VAULT	—	TREE LINE
○EM	ELECTRIC METER	—X—	FENCE
○WM	WATER METER	—OHP—	OVERHEAD POWER LINE
○GM	GAS METER	—OH-TEL—	OVERHEAD TELEPHONE LINE
⊕GV	GAS VALVE	—OHP&T—	OVERHEAD POWER & TELEPHONE LINE
⊕WV	WATER VALVE	—G—	GAS LINE
⊕	MONITORING WELL	—W—	WATER LINE
○GR	GAS REGULATOR	—UGP—	UNDERGROUND POWER
⊕FH	FIRE HYDRANT	—UGT—	UNDERGROUND TELEPHONE
⊕FDC	FIRE DEPARTMENT CONNECTION	—C—	UNDERGROUND CABLE TELEVISION
⊕	WATER MANHOLE		

GRADING LEGEND

—XXX.XX TC	- TOP OF CURB ELEVATION
—XXX.XX	- SPOT ELEVATION
—XXX.XX LC	- LIP OF CURB ELEVATION
—XXX.XX G	- GUTTER ELEVATION
—XXX.XX ME	- MATCH EXISTING ELEVATION
—XXX.XX TW	- TOP OF WALL ELEVATION
—XXX.XX BW	- BOTTOM OF WALL ELEVATION
—XXX.XX HP	- HIGH POINT
—XXX.XX LP	- LOW POINT
—XXX—	- PROPOSED CONTOUR
--XXX--	- EXISTING CONTOUR

PLAN LEGEND:

---	- APPROX. GRADING LIMITS
---	- RIGHT OF WAY (R/W)
---	- PROPERTY LINE (P/L)
---	- STORM SEWER LINE
⊕	- REMOVE TREE OR SHRUB
⊕	- PROTECT TREE OR SHRUB
---	- FULL DEPTH ASPHALT PAVEMENT
---	- 2" MILL & OVERLAY
---	- CONCRETE MULTI-USE TRAIL
---	- COLORED & STAMPED MEDIAN



SUMMARY OF ROADWAY QUANTITIES		
ITEM DESCRIPTION	QUANTITY	UNIT
Mobilization	1	LS
Contractor Furnished Surveying	1	LS
Clearing, Grubbing, & Demolition	3.3	AC
Unclassified Excavation	4,489	CY
Embankment	59	CY
Subgrade Stablization (9", Fly Ash and Compaction)	8,857	SY
Untreated Compacted Aggregate (6" - Roadway)	8,704	SY
Untreated Compacted Aggregate (4" - Median & Sidewalk)	2,048	SY
Milling & Overlay (2")	2,928	SY
Asphaltic Concrete Base: RC-Type 1-01 (8" - Roadway)	7,574	SY
Asphaltic Concrete Surface: Type 5-01 (2" - Roadway)	7,574	SY
Asphaltic Concrete Base: RC-Type 1-01 (4" - Roadway)	598	SY
Concrete Curb & Gutter (Type CG)	2,396	LF
Concrete Curb (Type C)	615	LF
Concrete Safety Barrier (Type C Pier Protection)	672	LF
Large Block Retaining Wall	2,165	VSF
Concrete Median (4")	266	SY
Concrete Median (4") (Stamped & Colored)	550	SY
Concrete Multi Use Trail (6")	1,431	SY
Concrete Sidewalk Ramp	209	SY
Type 2 Rock Blanket	341	SY
KCMO Type 1 Curb Inlet (5'x4')	1	EA
KCMO Type 1 Curb Inlet (8'x4')	1	EA
KCMO Type 2 Curb Inlet (5'x4')	1	EA
KCMO Junction Box (4'x4')	1	EA
MODOT Type A Drop Inlet (2'x2')	4	EA
MODOT Type S Drop Inlet (5'x3')	2	EA
MODOT Type E Drop Inlet (4'x4')	1	EA
12" RCP (Class III)	28	LF
15" RCP (Class III)	30	LF
18" RCP (Class III)	9	LF
MoDOT Type A Pipe Collar	2	EA
Connect to Existing RCB	1	EA
Connect to Existing Storm Sewer Structure	1	EA
Curb/Drop Inlet Protection	13	EA
Tree Protection	5	EA
Culvert Inlet Protection	2	EA
Project Information Signs	2	EA



Walter P Moore and Associates, Inc.  
1100 Walnut, Suite 1825  
Kansas City, Missouri 64106

816.701.2100  
walterpmoore.com  
MO PE Corporation No. 1999141112

IN ASSOCIATION WITH

PROJECT NAME

NE CHOUTEAU  
PARKWAY TRAIL  
CONNECTION

@ I-35

KANSAS CITY, MISSOURI

CITY PROJECT NO. 70171305

FEDERAL PROJECT NO.

CMAQ 3319(412)



NO.	DATE	SUBMITTALS
1	06/30/2017	MODOT COST SHARE
2	11/17/2017	MODOT REVIEW
3	12/22/2017	90% CDs
4	09/13/2019	FLOODPLAIN APPLICATION
5	12/13/2019	FINAL PLANS
6	05/27/2020	MODOT COMMENTS
7	11/12/2020	ADDENDUM #2

DESIGNED BY	M.J.H.
REVIEWED BY	D.L.B.
DRAWN BY	D.M.B.
PROJECT NUMBER	M08-17001-00
DATE	27 MAY 2020

GENERAL NOTES,  
LEGENDS, & SUMMARY  
OF ROADWAY  
QUANTITIES

SHEET NUMBER



# NE CHOUTEAU PARKWAY TRAIL CONNECTION @ I-35

KANSAS CITY, MISSOURI  
CITY PROJECT NO. 70171305  
FEDERAL PROJECT NO.  
CMAQ 3319(412)

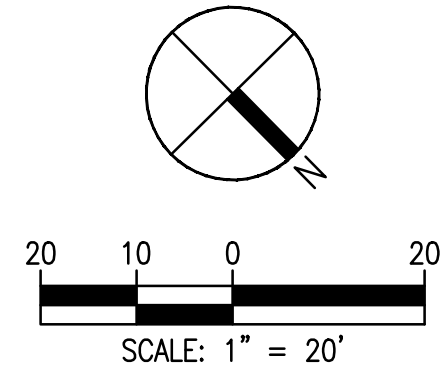


NO.	DATE	SUBMITTALS
1	06/30/2017	MODOT COST SHARE
2	11/17/2017	MODOT REVIEW
3	12/22/2017	90% CDs
4	09/13/2019	FLOODPLAIN APPLICATION
5	12/13/2019	FINAL PLANS
6	05/27/2020	MODOT COMMENTS
7	11/12/2020	ADDENDUM #2

DESIGNED BY	M.J.H.
REVIEWED BY	D.L.B.
DRAWN BY	D.M.B.
PROJECT NUMBER	M08-17001-00
DATE	27 MAY 2020
SHEET TITLE	

## PLAN - NE CHOUTEAU PARKWAY

SHEET NUMBER



### KEYNOTES:

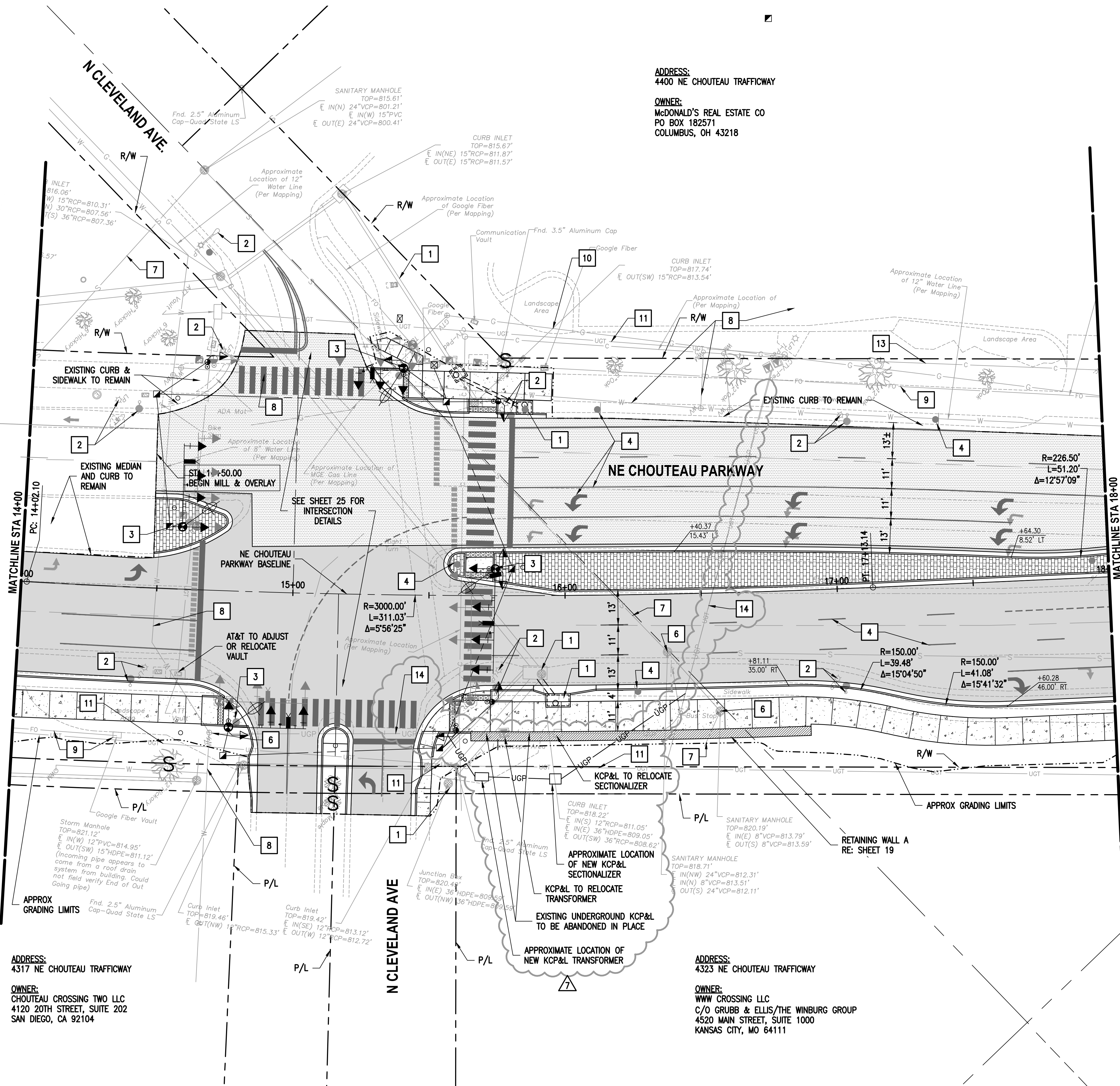
- REMOVE TREE OR SHRUB
- PROTECT TREE OR SHRUB
- REFER TO STORM SEWER PLANS
- REFER TO STREET LIGHTING PLANS
- REFER TO TRAFFIC SIGNAL PLANS
- REFER TO PAVEMENT MARKING & SIGNAGE PLANS
- REFER TO LANDSCAPE PLANS
- CONTRACTOR TO ADJUST TOP OF UTILITY STRUCTURE TO PROPOSED GRADE
- EXISTING KCMO SANITARY SEWER SYSTEM TO REMAIN UNDISTURBED
- EXISTING KCMO WATER LINE TO REMAIN UNDISTURBED
- EXISTING GOOGLE FIBER SYSTEM TO REMAIN UNDISTURBED
- EXISTING MGE SYSTEM TO REMAIN UNDISTURBED
- EXISTING AT&T SYSTEM TO REMAIN UNDISTURBED
- EXISTING CENTURY LINK SYSTEM TO REMAIN UNDISTURBED
- EXISTING CHARTER SYSTEM TO REMAIN UNDISTURBED
- EXISTING KCP&L SYSTEM TO REMAIN UNDISTURBED

### UTILITY NOTE:

THE LOCATION, DEPTH AND SIZE OF EXISTING AND PROPOSED UTILITY SYSTEMS ARE SHOWN BASED ON THE BEST AVAILABLE INFORMATION AND MAY NOT BE ACCURATE. THE CONTRACTOR SHALL FIELD VERIFY EXISTING AND PROPOSED UTILITY SYSTEMS AND NOTIFY THE ENGINEER AND UTILITY COMPANY IN THE EVENT THERE IS A CONFLICT.

### PAVEMENT LEGEND:

- FULL DEPTH ASPHALT PAVEMENT
- 2" MILL & OVERLAY
- CONCRETE MULTI-USE TRAIL
- COLOR & STAMPED MEDIAN
- CONCRETE MEDIAN



ADDRESS:  
4400 NE CHOUTEAU TRAFFICWAY

OWNER:  
MCDONALD'S REAL ESTATE CO  
PO BOX 182571  
COLUMBUS, OH 43218

ADDRESS:  
4317 NE CHOUTEAU TRAFFICWAY

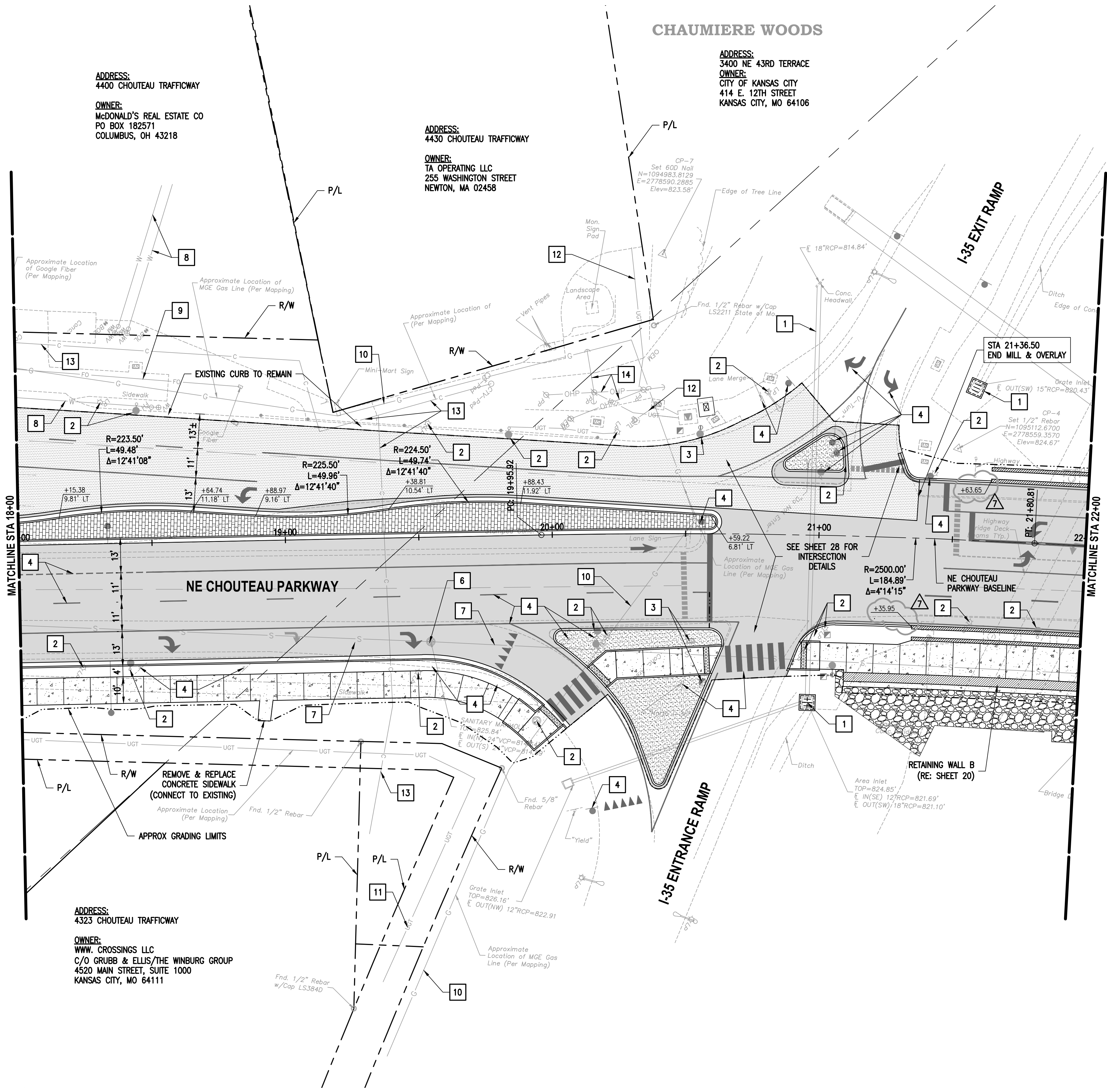
OWNER:  
CHOUTEAU CROSSING TWO LLC  
4120 20TH STREET, SUITE 202  
SAN DIEGO, CA 92104

ADDRESS:  
4323 NE CHOUTEAU TRAFFICWAY

OWNER:  
WWW CROSSING LLC  
C/O GRUBB & ELLIS/THE WINBURG GROUP  
4520 MAIN STREET, SUITE 1000  
KANSAS CITY, MO 64111



Nov. 10, 2020 - 11:59pm  
X:\M08\2017\17001-00 Chouteau Parkway Trail Connection\Civil\Sheet\10-17001-ROAD-Plan-3.dwg



ADDRESS:  
4400 CHOUTEAU TRAFFICWAY

OWNER:  
McDONALD'S REAL ESTATE CO  
PO BOX 182571  
COLUMBUS, OH 43218

ADDRESS:  
4430 CHOUTEAU TRAFFICWAY

OWNER:  
TA OPERATING LLC  
255 WASHINGTON STREET  
NEWTON, MA 02458

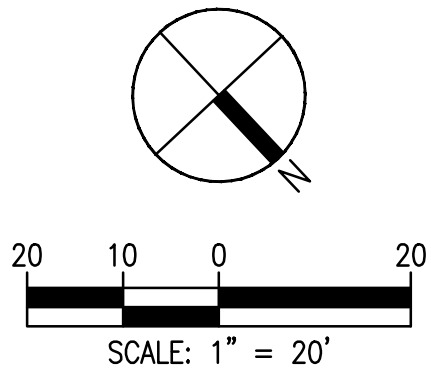
CHAUMIERE WOODS

ADDRESS:  
3400 NE 43RD TERRACE

OWNER:  
CITY OF KANSAS CITY  
414 E. 12TH STREET  
KANSAS CITY, MO 64106

ADDRESS:  
4323 CHOUTEAU TRAFFICWAY

OWNER:  
WWW. CROSSINGS LLC  
C/O GRUBB & ELLIS/THE WINBURG GROUP  
4520 MAIN STREET, SUITE 1000  
KANSAS CITY, MO 64111



Walter P Moore and Associates, Inc.  
1100 Walnut, Suite 1825  
Kansas City, Missouri 64106

816.701.2100  
walterpmoore.com  
MO PE Corporation No. 1999141112

IN ASSOCIATION WITH

PROJECT NAME

NE CHOUTEAU  
PARKWAY TRAIL  
CONNECTION  
@ I-35

KANSAS CITY, MISSOURI  
CITY PROJECT NO. 70171305  
FEDERAL PROJECT NO.  
CMAQ 3319(412)



KEYNOTES:

- 1 REMOVE TREE OR SHRUB
- 2 PROTECT TREE OR SHRUB
- 3 REFER TO STORM SEWER PLANS
- 4 REFER TO STREET LIGHTING PLANS
- 5 REFER TO TRAFFIC SIGNAL PLANS
- 6 REFER TO PAVEMENT MARKING & SIGNAGE PLANS
- 7 REFER TO LANDSCAPE PLANS
- 8 CONTRACTOR TO ADJUST TOP OF UTILITY STRUCTURE TO PROPOSED GRADE
- 9 EXISTING KCMO SANITARY SEWER SYSTEM TO REMAIN UNDISTURBED
- 10 EXISTING KCMO WATER LINE TO REMAIN UNDISTURBED
- 11 EXISTING GOOGLE FIBER SYSTEM TO REMAIN UNDISTURBED
- 12 EXISTING MGE SYSTEM TO REMAIN UNDISTURBED
- 13 EXISTING AT&T SYSTEM TO REMAIN UNDISTURBED
- 14 EXISTING CENTURY LINK SYSTEM TO REMAIN UNDISTURBED
- 15 EXISTING CHARTER SYSTEM TO REMAIN UNDISTURBED
- 16 EXISTING KCP&L SYSTEM TO REMAIN UNDISTURBED

UTILITY NOTE:

THE LOCATION, DEPTH AND SIZE OF EXISTING AND PROPOSED UTILITY SYSTEMS ARE SHOWN BASED ON THE BEST AVAILABLE INFORMATION AND MAY NOT BE ACCURATE. THE CONTRACTOR SHALL FIELD VERIFY EXISTING AND PROPOSED UTILITY SYSTEMS AND NOTIFY THE ENGINEER AND UTILITY COMPANY IN THE EVENT THERE IS A CONFLICT.

PAVEMENT LEGEND:

- FULL DEPTH ASPHALT PAVEMENT
- 2" MILL & OVERLAY
- CONCRETE MULTI-USE TRAIL
- COLORLED & STAMPED MEDIAN
- CONCRETE MEDIAN

NO.	DATE	SUBMITTALS
1	06/30/2017	MODOT COST SHARE
2	11/17/2017	MODOT REVIEW
3	12/22/2017	90% CDs
4	09/13/2019	FLOODPLAIN APPLICATION
5	12/13/2019	FINAL PLANS
6	05/27/2020	MODOT COMMENTS
7	11/12/2020	ADDENDUM #2

DESIGNED BY

M.J.H.

REVIEWED BY

D.L.B.

DRAWN BY

D.M.B.

PROJECT NUMBER

M08-17001-00

DATE

27 MAY 2020

SHEET TITLE

PLAN - NE CHOUTEAU  
PARKWAY

SHEET NUMBER



## NE CHOUTEAU PARKWAY TRAIL CONNECTION

@ I-35

KANSAS CITY, MISSOURI

CITY PROJECT NO. 70171305

FEDERAL PROJECT NO.

CMAQ 3319(412)



NO.	DATE	SUBMITTALS
1	06/30/2017	MODOT COST SHARE
2	11/17/2017	MODOT REVIEW
3	12/22/2017	90% CDs
4	09/13/2019	FLOODPLAIN APPLICATION
5	12/13/2019	FINAL PLANS
6	05/27/2020	MODOT COMMENTS
7	11/12/2020	ADDENDUM #2

DESIGNED BY

M.J.H.

REVIEWED BY

D.L.B.

DRAWN BY

D.M.B.

PROJECT NUMBER

M08-17001-00

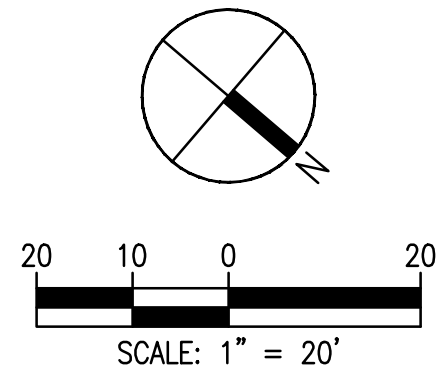
DATE

27 MAY 2020

SHEET TITLE

PLAN - NE CHOUTEAU  
PARKWAY

SHEET NUMBER



ADDRESS:  
4501 N. INDIANA AVENUE



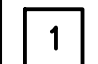

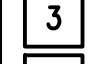
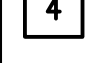


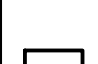
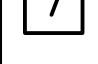



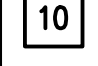
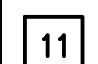

OWNER:  
CITY OF KANSAS CITY  
414 E. 12TH STREET  
KANSAS CITY, MO 64106

STA 25+69.06  
N: 1095452.7326  
E: 2778310.3720  
END ROADWAY  
CONSTRUCTION

ADDRESS:  
4501 N. INDIANA AVENUE

OWNER:  
CITY OF KANSAS CITY  
414 E. 12TH STREET  
KANSAS CITY, MO 64106

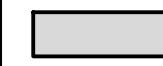

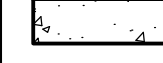
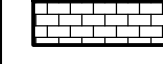

### KEYNOTES:

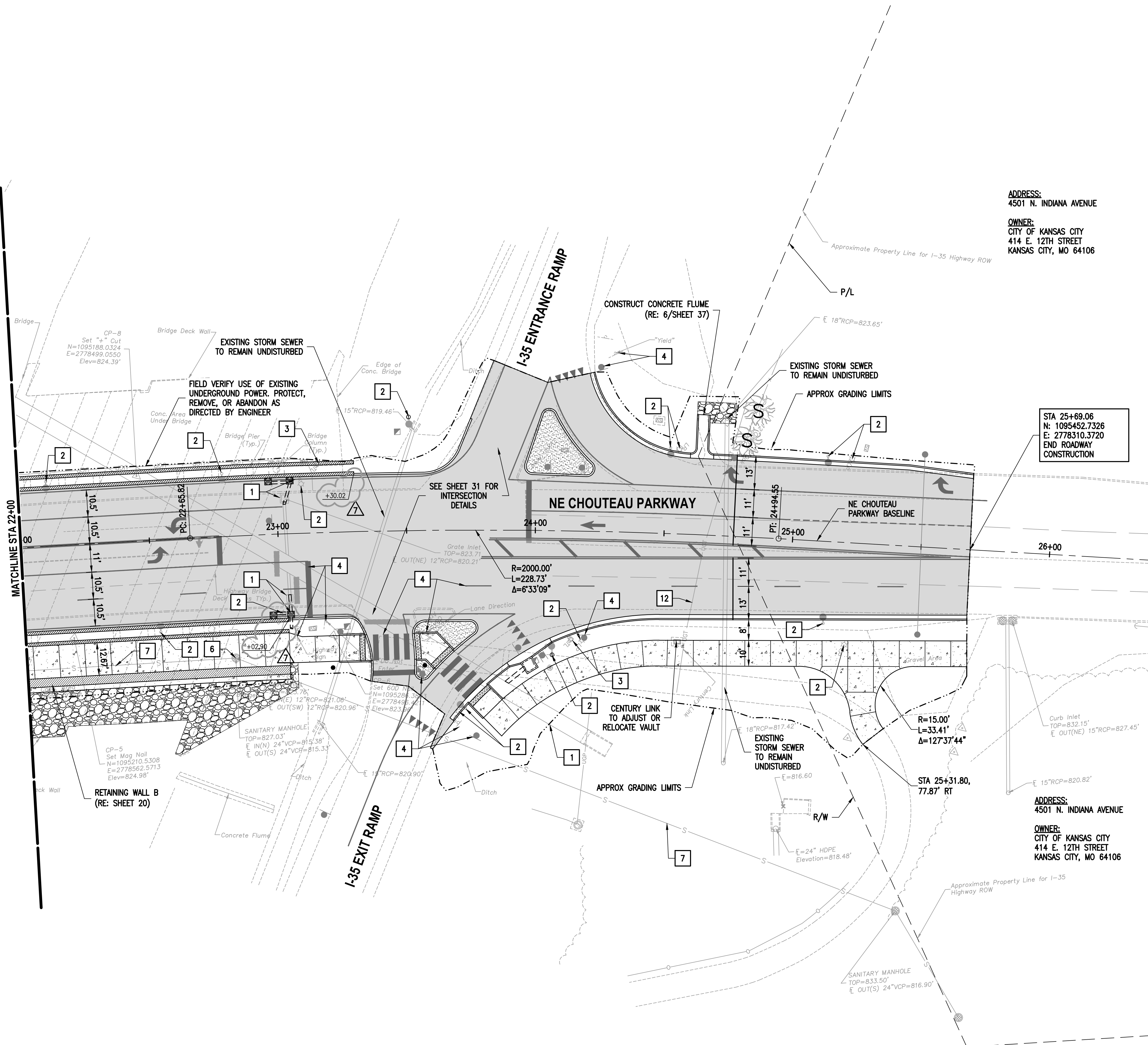
-  REMOVE TREE OR SHRUB
-  PROTECT TREE OR SHRUB
-  REFER TO STORM SEWER PLANS
-  REFER TO STREET LIGHTING PLANS
-  REFER TO TRAFFIC SIGNAL PLANS
-  REFER TO PAVEMENT MARKING & SIGNAGE PLANS
-  REFER TO LANDSCAPE PLANS
-  CONTRACTOR TO ADJUST TOP OF UTILITY STRUCTURE TO PROPOSED GRADE
-  EXISTING KCMO SANITARY SEWER SYSTEM TO REMAIN UNDISTURBED
-  EXISTING KCMO WATER LINE TO REMAIN UNDISTURBED
-  EXISTING GOOGLE FIBER SYSTEM TO REMAIN UNDISTURBED
-  EXISTING MGE SYSTEM TO REMAIN UNDISTURBED
-  EXISTING AT&T SYSTEM TO REMAIN UNDISTURBED
-  EXISTING CENTURY LINK SYSTEM TO REMAIN UNDISTURBED
-  EXISTING CHARTER SYSTEM TO REMAIN UNDISTURBED
-  EXISTING KCP&L SYSTEM TO REMAIN UNDISTURBED

### UTILITY NOTE:

THE LOCATION, DEPTH AND SIZE OF EXISTING AND PROPOSED UTILITY SYSTEMS ARE SHOWN BASED ON THE BEST AVAILABLE INFORMATION AND MAY NOT BE ACCURATE. THE CONTRACTOR SHALL FIELD VERIFY EXISTING AND PROPOSED UTILITY SYSTEMS AND NOTIFY THE ENGINEER AND UTILITY COMPANY IN THE EVENT THERE IS A CONFLICT.

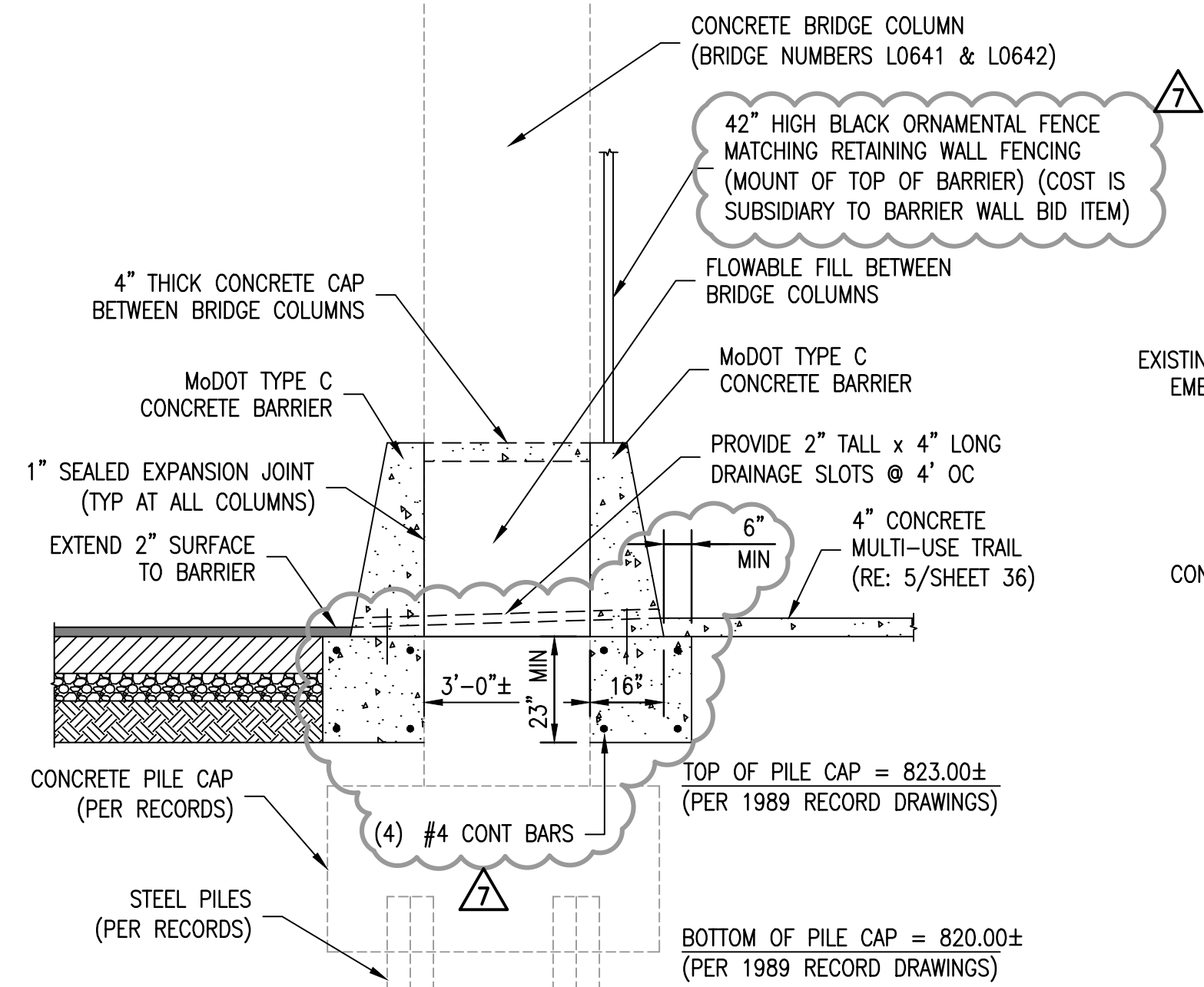
### PAVEMENT LEGEND:

-  FULL DEPTH ASPHALT PAVEMENT
-  2" MILL & OVERLAY
-  CONCRETE MULTI-USE TRAIL
-  COLORED & STAMPED MEDIAN
-  CONCRETE MEDIAN

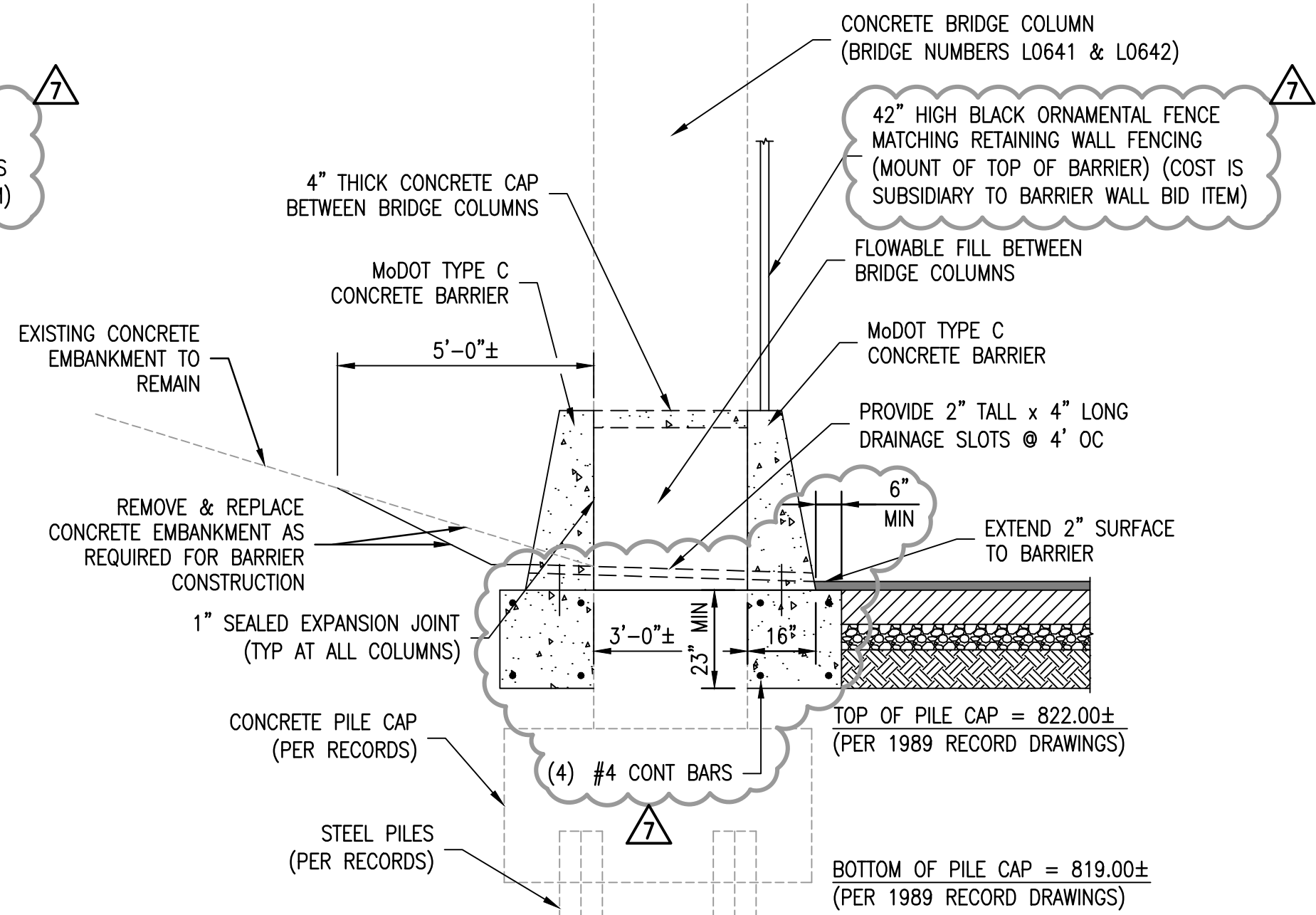




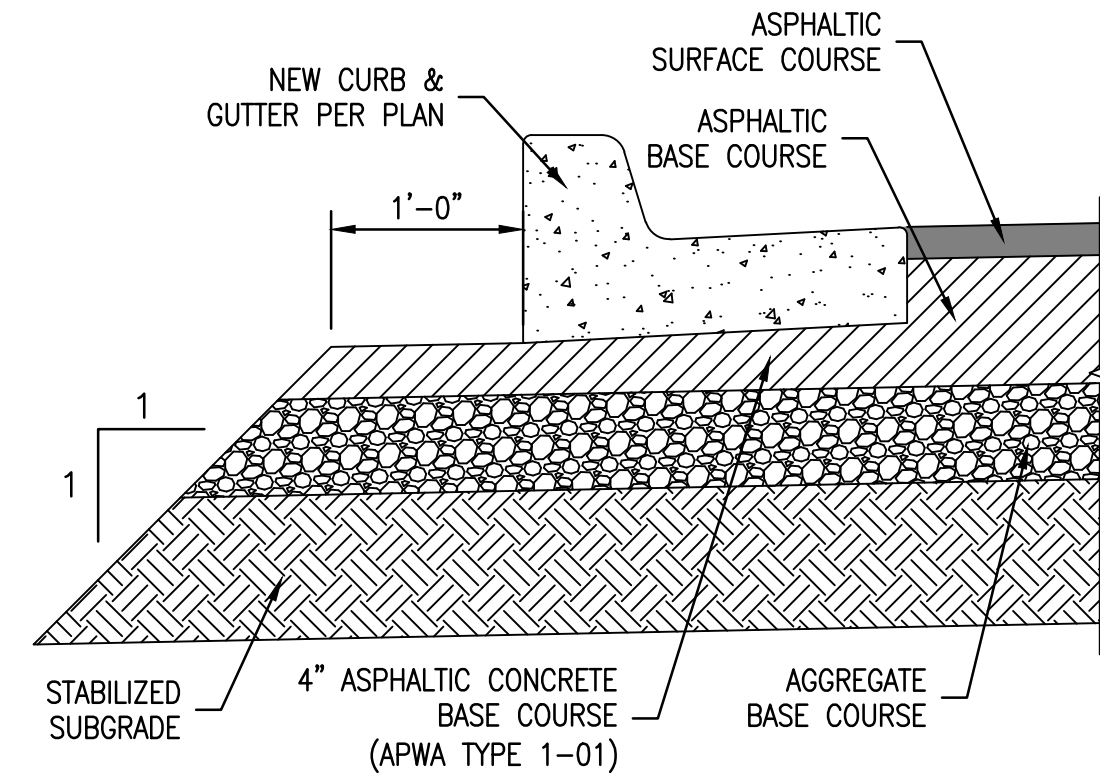
Nov 11, 2020 - 12:24pm  
X:\M08\2017\17001-00 Chouteau Parkway Trail Connection\Civil\Std Sheets\36-ROADWAY DETAILS-1.dwg



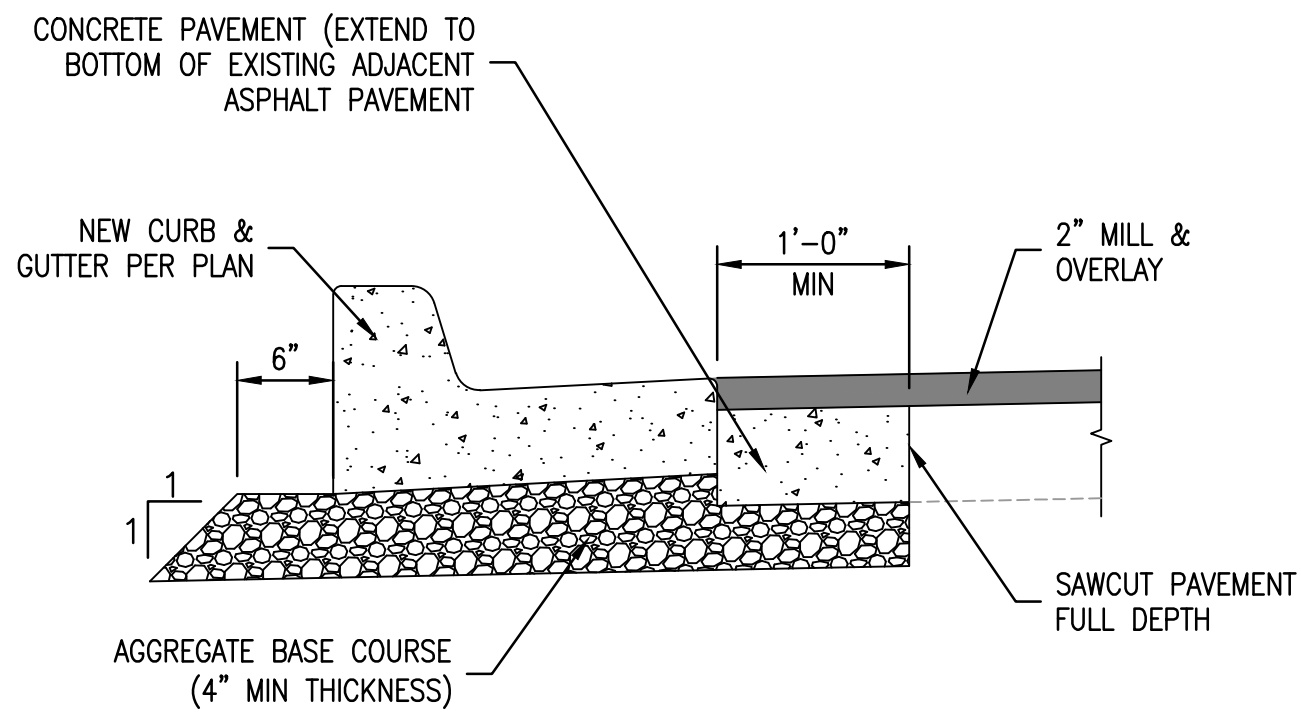
1 **BARRIER SECTION (NORTH)**  
3/8" = 1'-0"



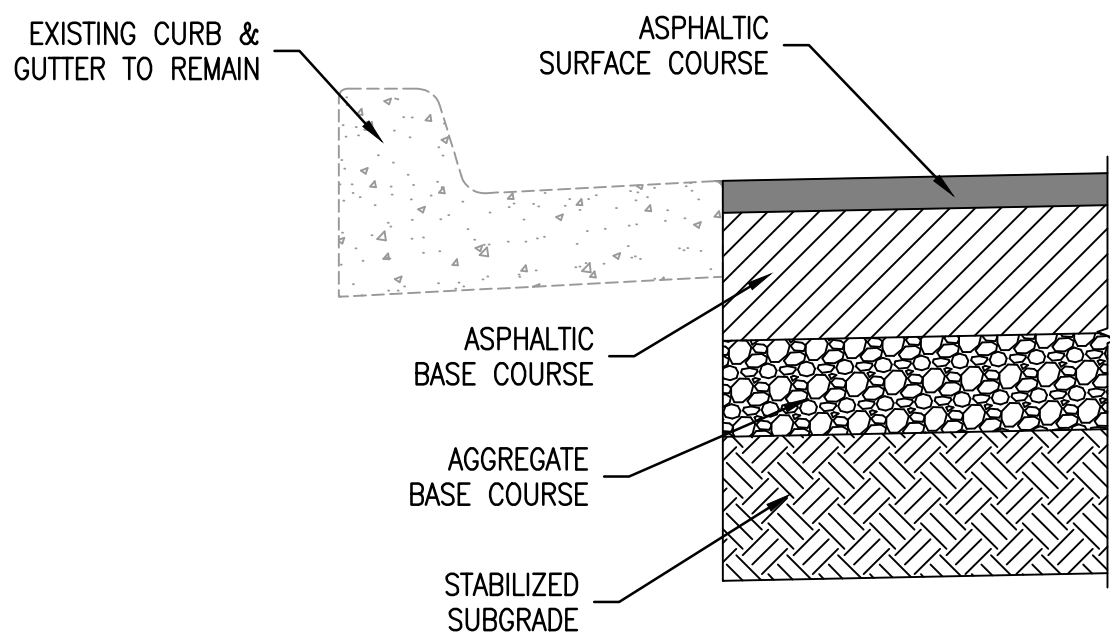
2 **BARRIER SECTION (SOUTH)**  
3/8" = 1'-0"



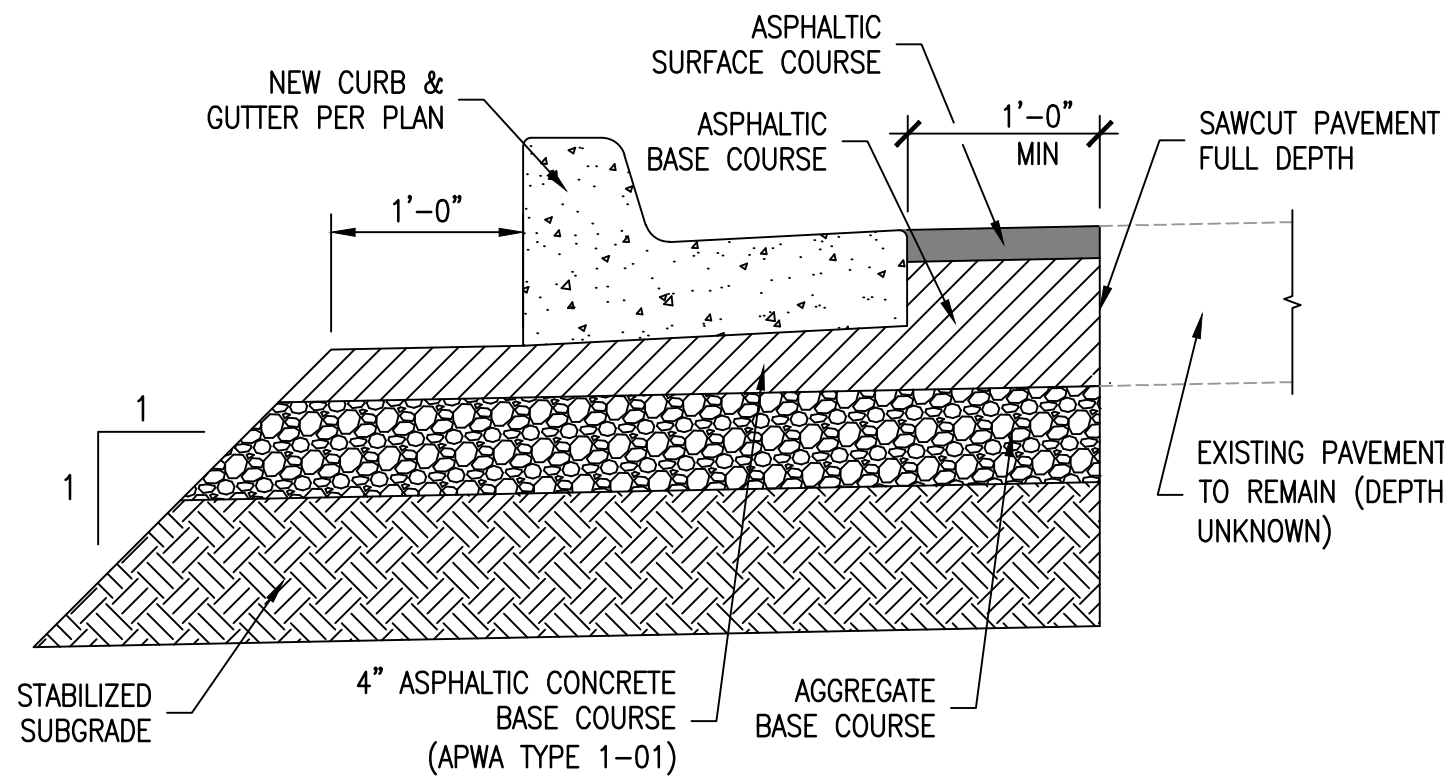
3 **SECTION (NEW CURB)**  
1" = 1'-0"



4 **SECTION (2" MILL)**  
1" = 1'-0"



5 **SECTION (EXISTING CURB)**  
1" = 1'-0"



6 **SECTION**  
1" = 1'-0"



Walter P Moore and Associates, Inc.  
1100 Walnut, Suite 1825  
Kansas City, Missouri 64106

816.701.2100  
walterpmoore.com  
MO PE Corporation No. 1999141112

IN ASSOCIATION WITH

PROJECT NAME

## NE CHOUTEAU PARKWAY TRAIL CONNECTION @ I-35

KANSAS CITY, MISSOURI  
CITY PROJECT NO. 70171305  
FEDERAL PROJECT NO.  
CMAQ 3319(412)



NO.	DATE	SUBMITTALS
1	06/30/2017	MODOT COST SHARE
2	11/17/2017	MODOT REVIEW
3	12/22/2017	90% CDs
4	09/13/2019	FLOODPLAIN APPLICATION
5	12/13/2019	FINAL PLANS
6	05/27/2020	MODOT COMMENTS
7	11/12/2020	ADDENDUM #2

DESIGNED BY	M.J.H.
REVIEWED BY	D.L.B.
DRAWN BY	D.M.B.
PROJECT NUMBER	M08-17001-00
DATE	27 MAY 2020
SHEET TITLE	

ROADWAY DETAILS  
SHEET NUMBER