

DESIGN DESIGNATION

A.A.D.T. - 2020 = 17,521

A.A.D.T. - 2040 = 18,455

D.H.V. = 10%

T = 10.1%

V = 40 M.P.H.

D = 43.7% SB 56.3% NB

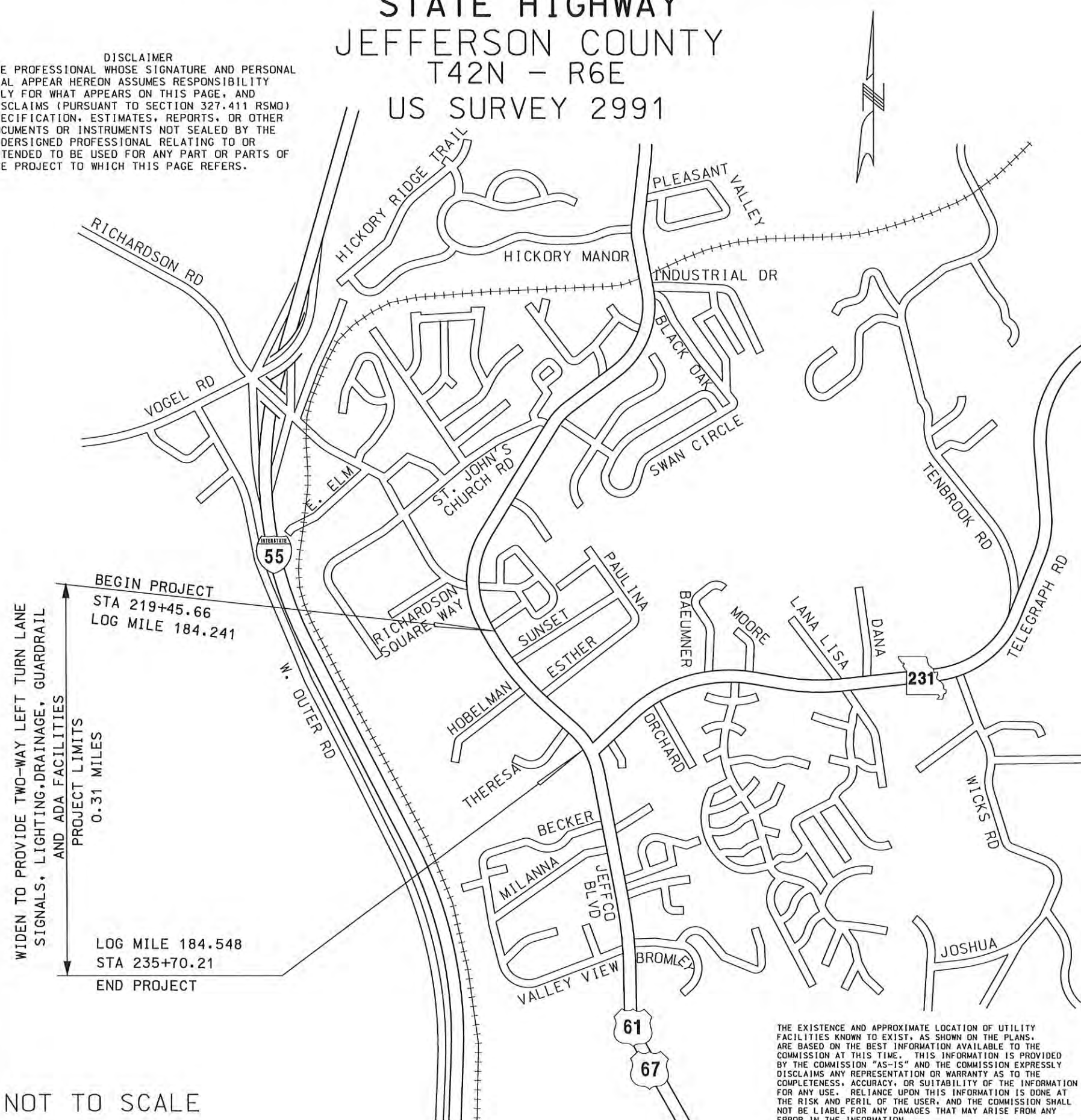
FUNCTIONAL CLASSIFICATION- PRINCIPAL ARTERIAL

NEW RIGHT OF WAY WILL BE
REQUIRED FOR THIS PROJECTCONVENTIONAL SYMBOLS
(USED IN PLANS)

	EXISTING	NEW
BUILDINGS AND STRUCTURES		
GUARD RAIL		
GUARD CABLE		
CONCRETE RIGHT-OF-WAY MARKER		
STEEL RIGHT-OF-WAY MARKER		
LOCATION SURVEY MARKER		
UTILITIES		
FIBER OPTICS	-FO-	-FB-
OVERHEAD CABLE TV	-OTV-	-OTV-
UNDERGROUND CABLE TV	-UTV-	-UTV-
OVERHEAD TELEPHONE	-OT-	-OT-
UNDERGROUND TELEPHONE	-UT-	-UT-
OVERHEAD POWER	-OE-	-OE-
UNDERGROUND POWER	-UE-	-UE-
SANITARY SEWER	-S-	-S-
STORM SEWER	-SS-	-SS-
GAS	-G-	-G-
WATER	-W-	-W-
MANHOLE		
FIRE HYDRANT		
WATER VALVE		
WATER METER		
DROP INLET		
DITCH BLOCK		
GROUND MOUNTED SIGN		
LIGHT POLE		
H-FRAME POWER POLE		
TELEPHONE PEDESTAL		
FENCE		
CHAIN LINK		
WOVEN WIRE		
GATE POST		
BENCHMARK		

NOTE: DASHED OR OPEN SYMBOLS INDICATE
EXISTING FEATURESMISSOURI HIGHWAYS AND TRANSPORTATION COMMISSION
PRELIMINARY PLANS FOR PROPOSED
STATE HIGHWAY
JEFFERSON COUNTY
T42N - R6E
US SURVEY 2991

DISCLAIMER
THE PROFESSIONAL WHOSE SIGNATURE AND PERSONAL
SEAL APPEAR HEREON ASSUMES RESPONSIBILITY
ONLY FOR WHAT APPEARS ON THIS PAGE, AND
DISCLAIMS (PURSUANT TO SECTION 327.411 RSMO)
SPECIFICATION, ESTIMATES, REPORTS, OR OTHER
DOCUMENTS OR INSTRUMENTS NOT SEALED BY THE
UNDERSIGNED PROFESSIONAL RELATING TO OR
INTENDED TO BE USED FOR ANY PART OR PARTS OF
THE PROJECT TO WHICH THIS PAGE REFERS.



INDEX OF SHEETS

DESCRIPTION	SHEET NUMBER
TITLE SHEET	1
TYPICAL SECTIONS (TS) (2 SHEETS)	2
PLAN-PROFILE (PP)	4-8
TRAFFIC CONTROL SHEETS (TC)	9-16
SIGNALS (SG)	17-21
PAVEMENT MARKING (PM)	22-25
CROSS SECTIONS (XS)	1-15



LENGTH OF PROJECT

BEGINNING OF PROJECT	STA. 219+45.66
END OF PROJECT	STA. 235+70.21
APPARENT LENGTH	1624.55 FEET
EQUATIONS AND EXCEPTIONS:	
EQUATIONS:	
RTE. 61 STA EQ. 226+07.49 BK = 226+09.68 AH	
RTE. 61 STA EQ. 230+86.45 BK = 230+86.58 AH	

TOTAL CORRECTIONS	-2.32 FEET
NET LENGTH OF PROJECT	1622.23 FEET
STATE LENGTH	0.31 MILES

FOR INFORMATION ONLY ESTIMATED DISTURBED ACRES	0.7 ACRES
---------------------------------------------------	-----------

DESCRIPTION

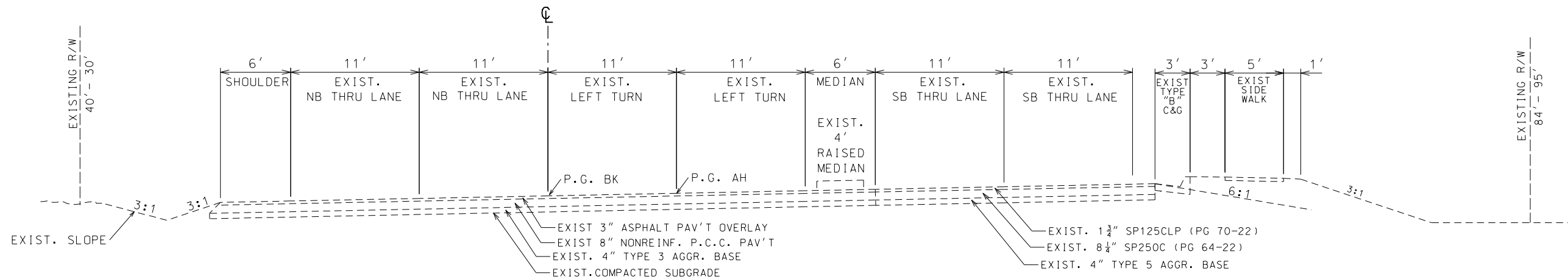
DATE

MISSOURI HIGHWAYS AND TRANSPORTATION
COMMISSION

TITLE SHEET

105 WEST CAPITOL
JEFFERSON CITY, MO 65102
1-888-ASK-MODOT (1-888-275-6636)

IF A SEAL IS PRESENT ON THIS SHEET IT HAS BEEN ELECTRONICALLY SEALED AND DATED

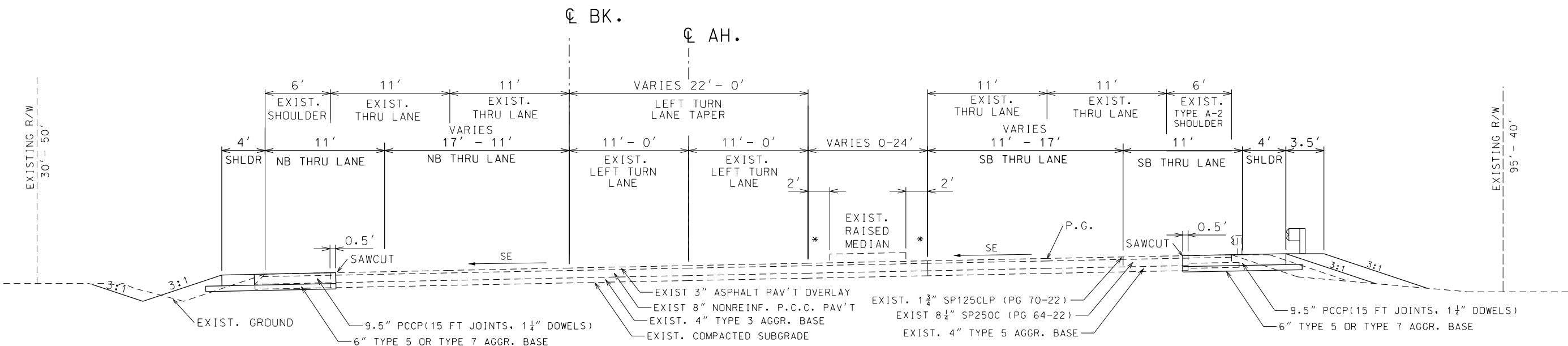


ROUTE 61/67

STA. 208+00 TO STA. 219+45.67

(SIDEWALK STA. 208+39 TO STA. 209+55)

EQ. STA. 211+32.38 BK = STA. 217+08.90 AH. (11' \varnothing SHIFT)



STA. 219+75.84 TO STA. 223+09.44


ROUTE 61/67

STA. 219+45.67 TO STA. 223+09.44

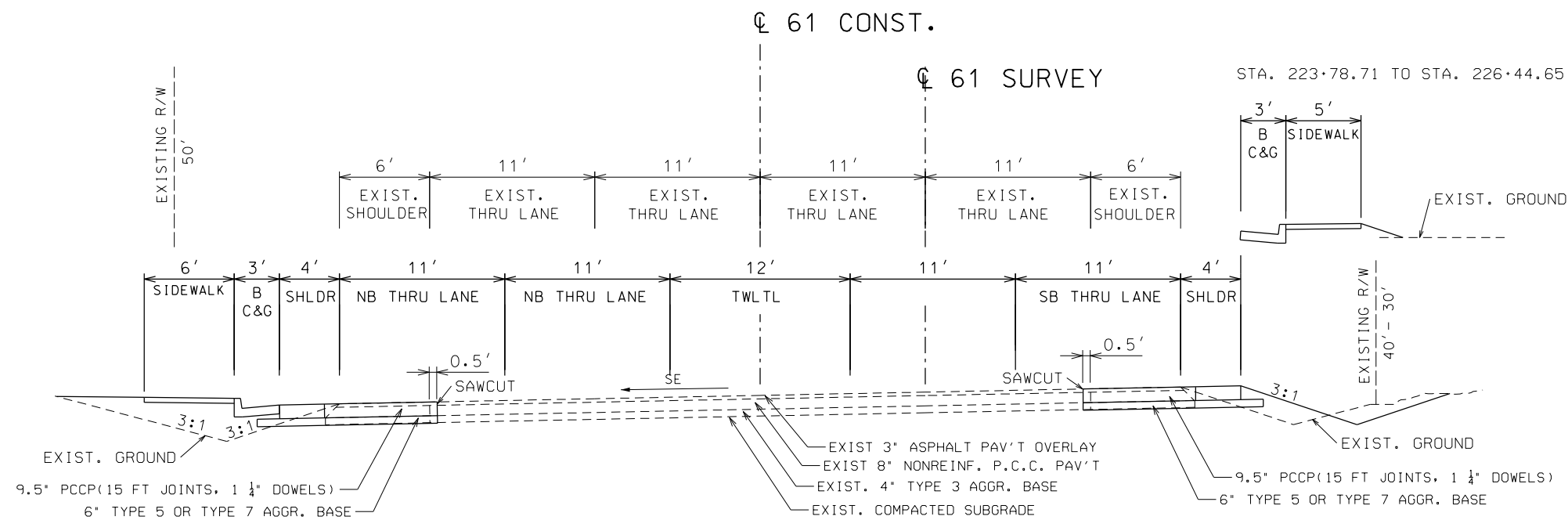
* - STA. 209+75 TO STA 218+00 1' MEDIAN OFFSET

DISCLAIMER

THE PROFESSIONAL WHOSE SIGNATURE AND PERSONAL SEAL APPEAR HEREON ASSUMES RESPONSIBILITY ONLY FOR WHAT APPEARS ON THIS PAGE, AND DISCLAIMS (PURSUANT TO SECTION 327.411 RSMO) SPECIFICATION, ESTIMATES, REPORTS, OR OTHER DOCUMENTS OR INSTRUMENTS NOT SEALED BY THE UNDERSIGNED PROFESSIONAL RELATING TO OR INTENDED TO BE USED FOR ANY PART OR PARTS OF THE PROJECT TO WHICH THIS PAGE REFERS.

DATE PREPARED 10/2/2020	
ROUTE 61/67	STATE MO
DISTRICT SL	SHEET NO. 2
COUNTY JEFFERSON	
JOB NO. J6S3433	
CONTRACT ID.	
PROJECT NO.	
BRIDGE NO.	
DESCRIPTION	DATE
MISSOURI HIGHWAYS AND TRANSPORTATION COMMISSION	
 105 WEST CAPITOL JEFFERSON CITY, MO 65102 1-888-ASK-MODOT (1-888-275-6636)	
TYPICAL SECTION SHEET SHEET 1 OF 2	

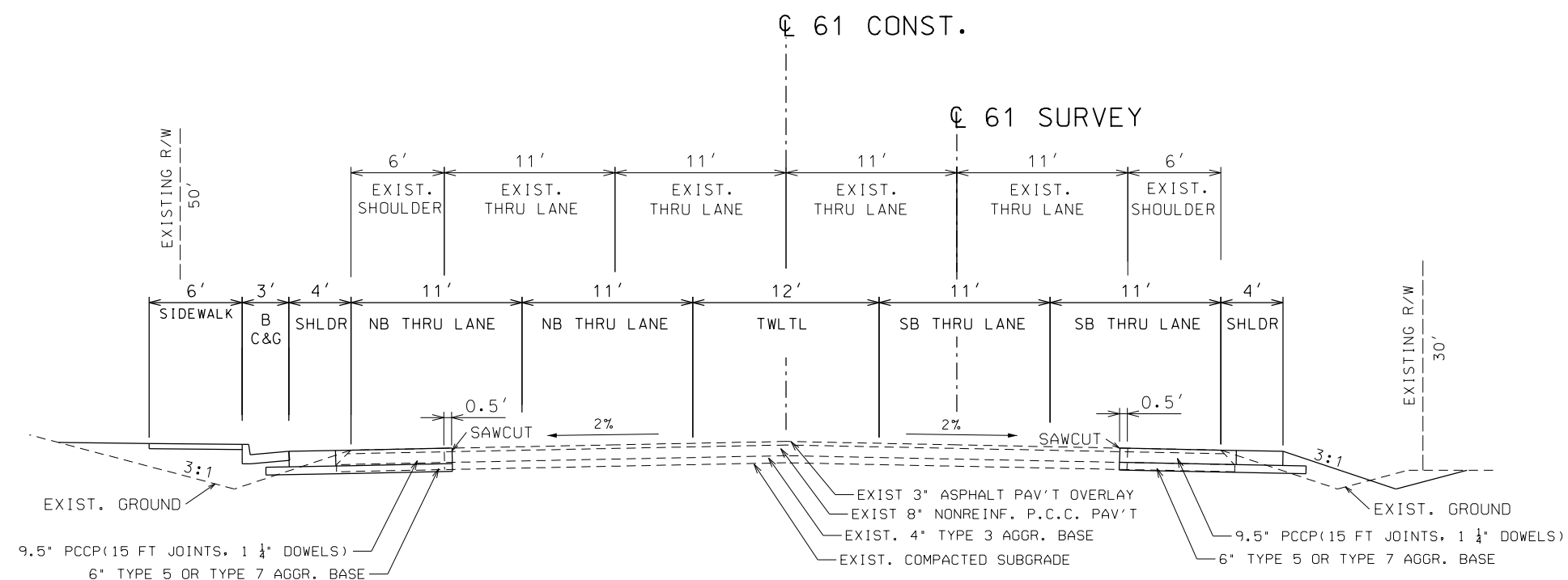
IF A SEAL IS PRESENT ON THIS SHEET IT HAS BEEN ELECTRONICALLY SEALED AND DATED.



ROUTE 61/67

STA. 223+09.44 TO STA. 230+87

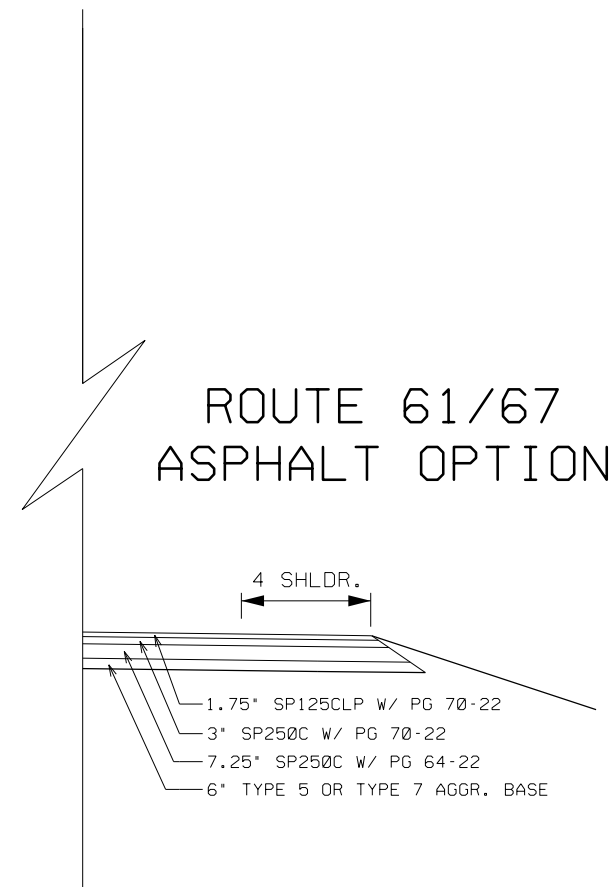
STA. 231+71 TO STA. 235+70.21



ROUTE 61/67

STA. 230+87 TO STA. 231+71

NOTE: THE PROPOSED WIDENING SHOWN IN THE TYPICAL SECTIONS ABOVE DEPICT THE CONCRETE DESIGN OPTION. ALSO AVAILABLE IS THE ASPHALT WIDENING OPTION AS PICTURED ON THE RIGHT.



ROUTE 61/67
ASPHALT OPTION

APPLICATION RATES:

SP125CLP	W/ PG 70-22	1.952 TONS C/Y	COMPACTED
SP250C	W/ PG 70-22	2.022 TONS C/Y	COMPACTED
SP250C	W/ PG 64-22	2.022 TONS C/Y	COMPACTED
TACK COAT 0.1 GAL PER SQYD			

DISCLAIMER
THE PROFESSIONAL WHOSE SIGNATURE AND PERSONAL
SEAL APPEAR HEREON ASSUMES RESPONSIBILITY
ONLY FOR WHAT APPEARS ON THIS PAGE, AND
DISCLAIMS (PURSUANT TO SECTION 327.411 RSMO)
SPECIFICATION, ESTIMATES, REPORTS, OR OTHER
DOCUMENTS OR INSTRUMENTS NOT SEALED BY THE
UNDERSIGNED PROFESSIONAL RELATING TO OR
INTENDED TO BE USED FOR ANY PART OR PARTS OF
THE PROJECT TO WHICH THIS PAGE REFERS.

DATE PREPARED	
10/2/2020	
ROUTE	STATE
61/67	MO
DISTRICT	SHEET NO.
SL	2
COUNTY	
JEFFERSON	
JOB NO.	
J6S3433	
CONTRACT ID.	

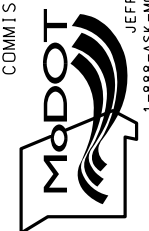
PROJECT NO.
BRIDGE NO.

--	--	--	--	--	--	--	--

--	--	--	--	--	--	--	--

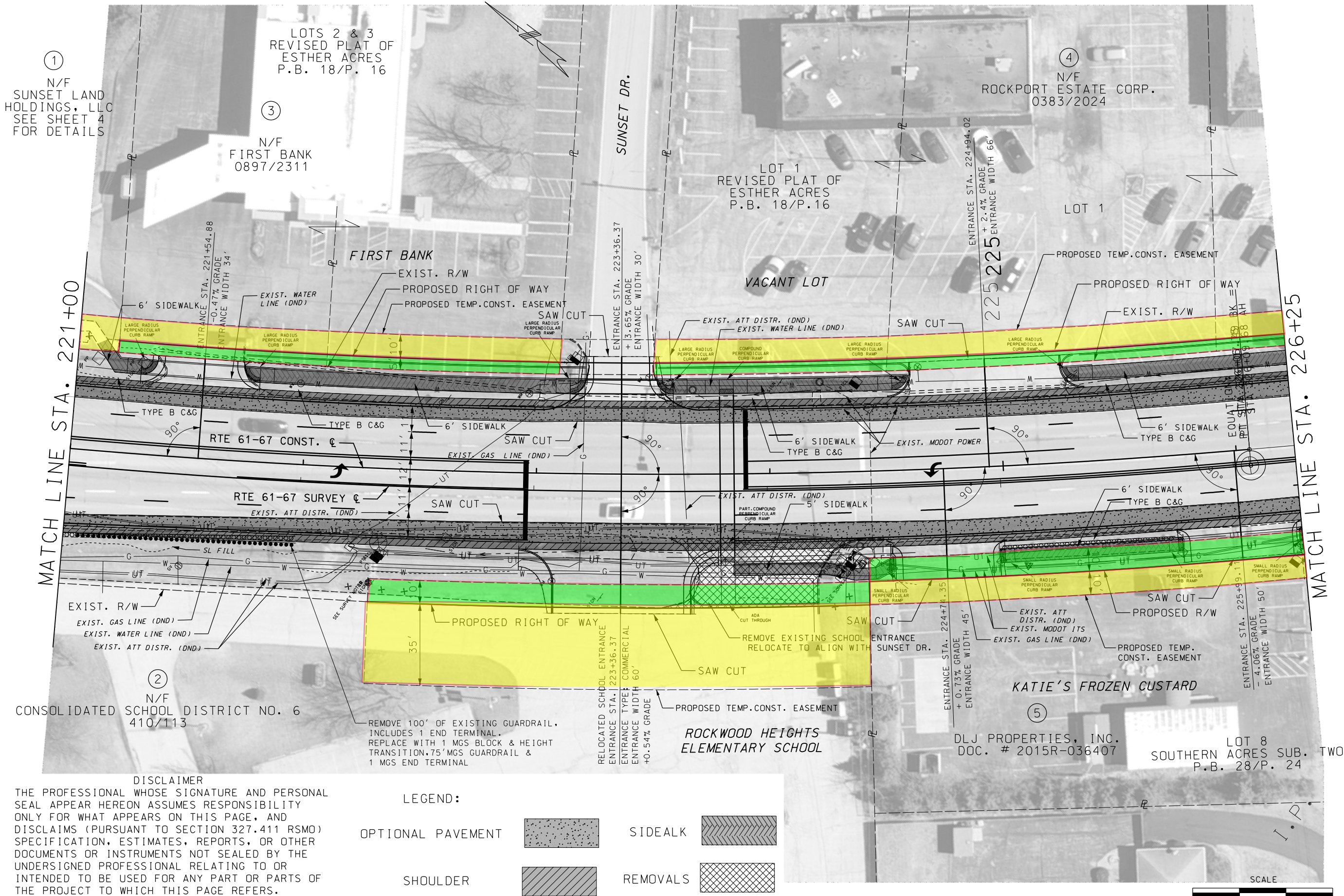
[illegible]

	DATE

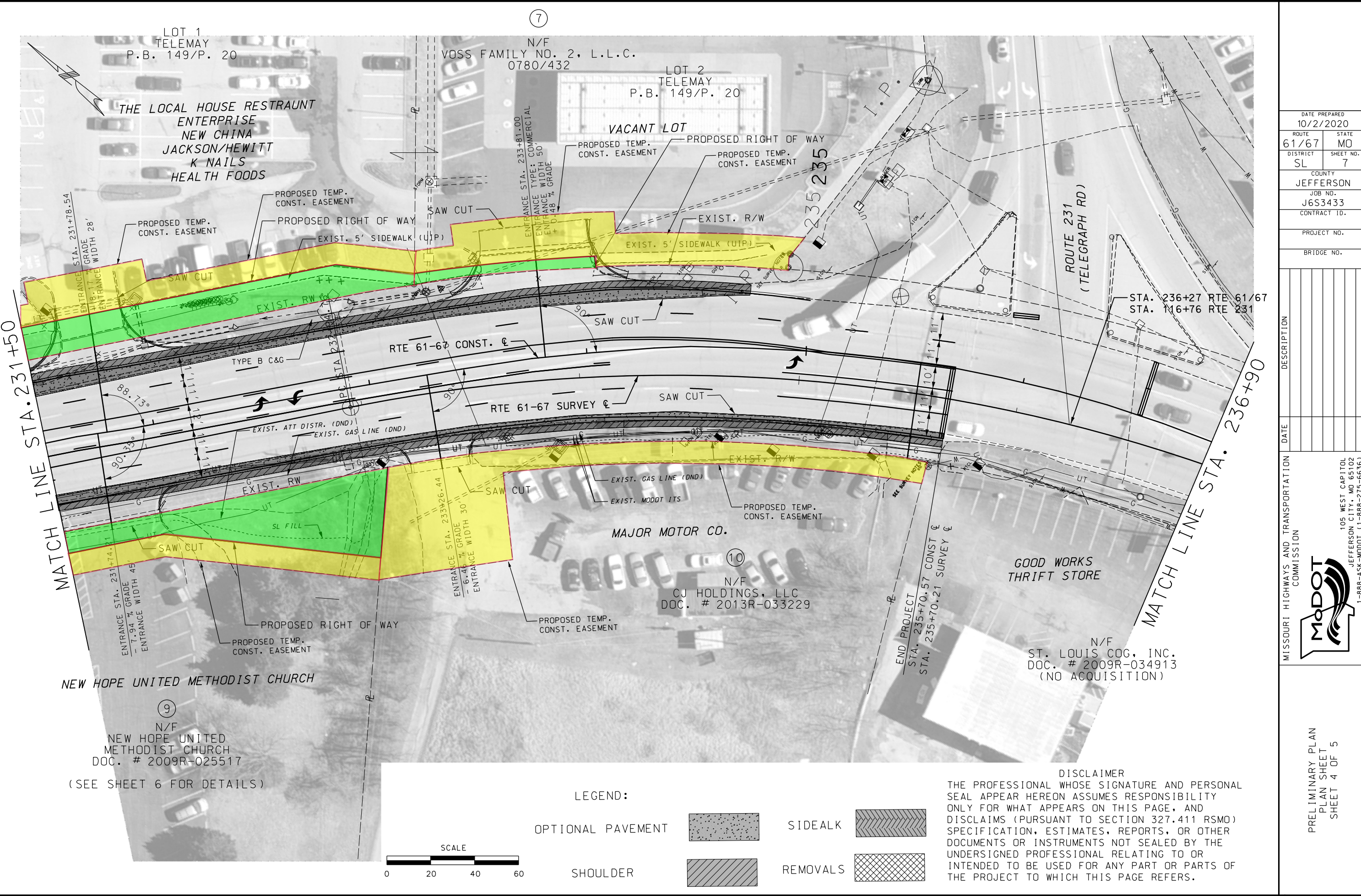
TRANSPORTATION
105 WEST CAPITOL
N CITY, MO 65102
(314) 241-2755-6636

TYPICAL SECTION SHEET
SHEET 2 OF 2

IF A SEAL IS PRESENT ON THIS SHEET IT HAS BEEN ELECTRONICALLY SEALED AND DATED.



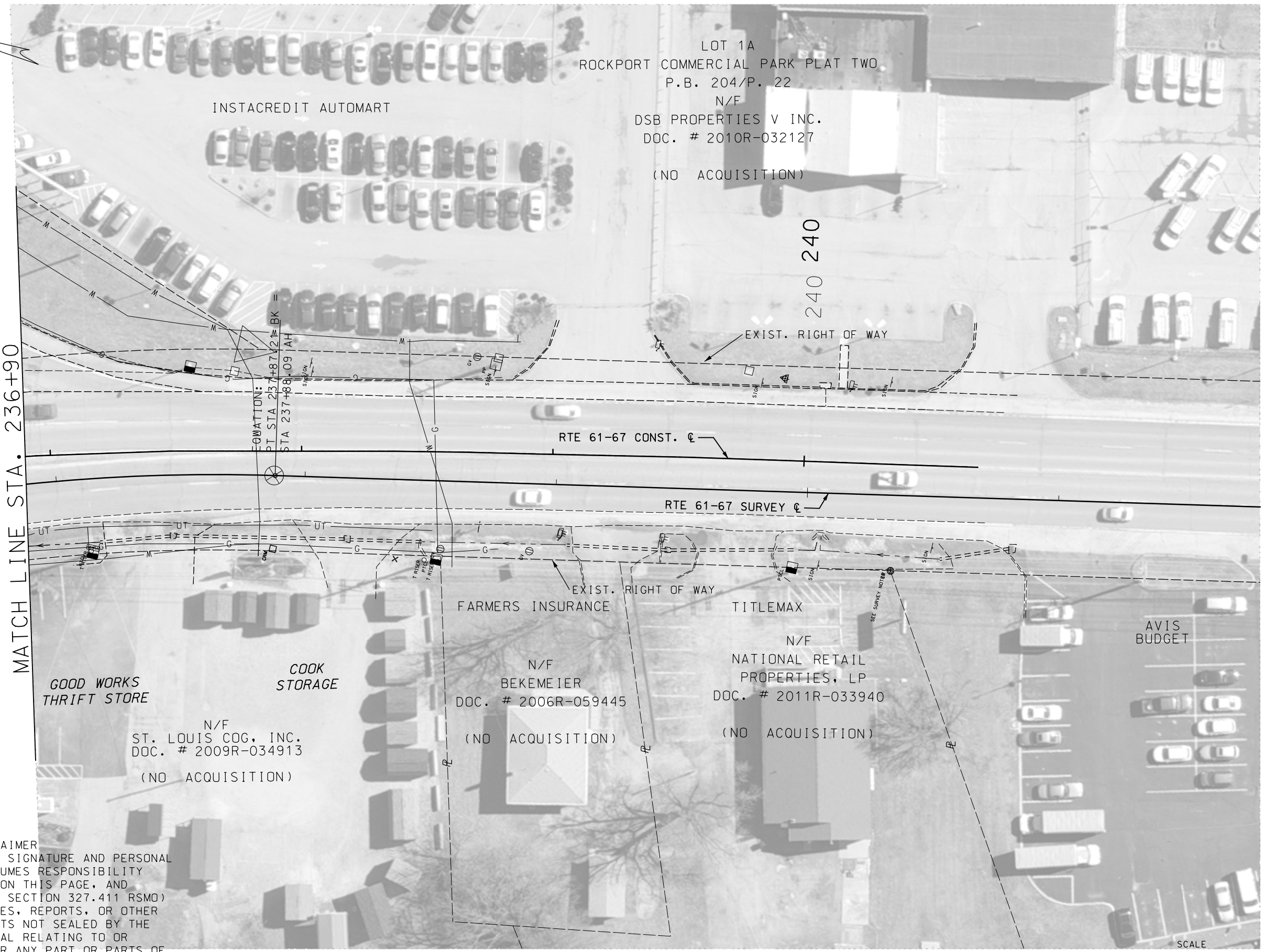
DATE PREPARED 10/2/2020	
ROUTE 61/67	STATE MO
DISTRICT SL	SHEET NO. 5
COUNTY JEFFERSON	
JOB NO. J6S3433	
CONTRACT ID.	
PROJECT NO.	
BRIDGE NO.	
DATE	DESCRIPTION
MISSOURI HIGHWAYS AND TRANSPORTATION COMMISSION	105 WEST CAPITOL JEFFERSON CITY, MO 65102 1-888-ASK-MODOT (1-888-275-6636)
PRELIMINARY PLAN PLAN SHEET SHEET 2 OF 5	



DATE PREPARED 10/2/2020	
ROUTE 61/67	STATE MO
DISTRICT SL	SHEET NO. 7
COUNTY JEFFERSON	
JOB NO. J6S3433	
CONTRACT ID.	
PROJECT NO.	
BRIDGE NO.	
DESCRIPTION	
DATE	
MISSOURI HIGHWAYS AND TRANSPORTATION COMMISSION	
105 WEST CAPITOL JEFFERSON CITY, MO 65102 1-888-ASK-MODOT (1-888-275-6636)	
PRELIMINARY PLAN SHEET 4 OF 5	

IF A SEAL IS PRESENT ON THIS SHEET IT HAS BEEN ELECTRONICALLY SEALED AND DATED.

MATCH LINE STA. 236+90



INSTACREDIT AUTOMART

LOT 1A
ROCKPORT COMMERCIAL PARK PLAT TWO
P.B. 204/P. 22
N/F
DSB PROPERTIES V INC.
DOC. # 2010R-032127

(NO ACQUISITION)

240 240

EXIST. RIGHT OF WAY

RTE 61-67 CONST. CL

RTE 61-67 SURVEY CL

EXIST. RIGHT OF WAY

FARMERS INSURANCE

TITLEMAX

N/F
NATIONAL RETAIL
PROPERTIES, LP
DOC. # 2011R-033940

(NO ACQUISITION)

N/F
BEKEMEIER
DOC. # 2006R-059445

(NO ACQUISITION)

GOOD WORKS
THRIFT STORE

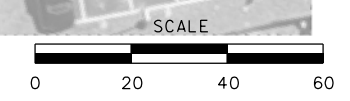
COOK
STORAGE

N/F
ST. LOUIS COG, INC.
DOC. # 2009R-034913

(NO ACQUISITION)

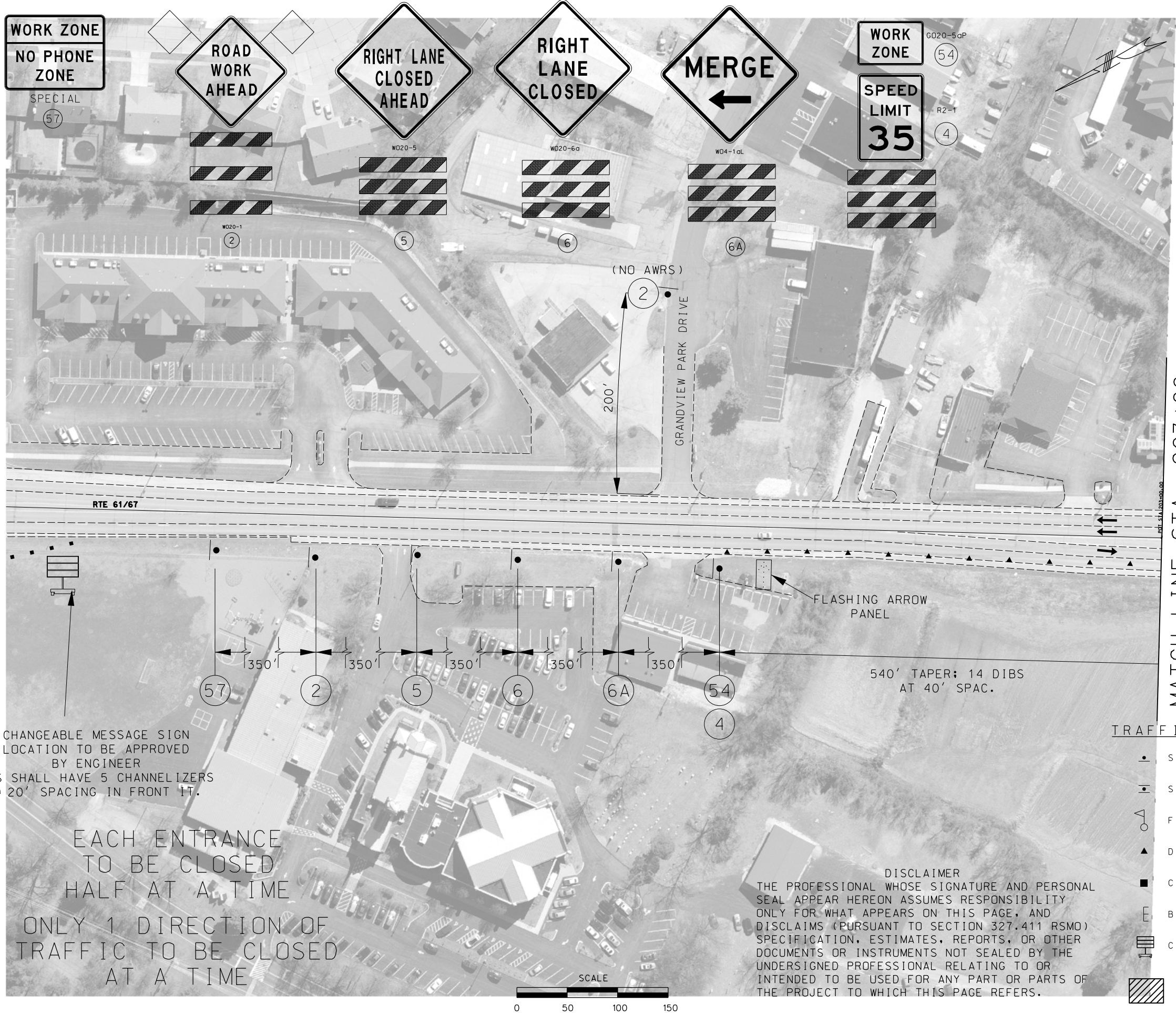
AVIS
BUDGET

DISCLAIMER
THE PROFESSIONAL WHOSE SIGNATURE AND PERSONAL
SEAL APPEAR HEREON ASSUMES RESPONSIBILITY
ONLY FOR WHAT APPEARS ON THIS PAGE, AND
DISCLAIMS (PURSUANT TO SECTION 327.411 RSMO)
SPECIFICATION, ESTIMATES, REPORTS, OR OTHER
DOCUMENTS OR INSTRUMENTS NOT SEALED BY THE
UNDERSIGNED PROFESSIONAL RELATING TO OR
INTENDED TO BE USED FOR ANY PART OR PARTS OF
THE PROJECT TO WHICH THIS PAGE REFERS.



DATE PREPARED 10/2/2020	
ROUTE 61/67	STATE MO
DISTRICT SL	SHEET NO. 8
COUNTY JEFFERSON	
JOB NO. J6S3433	
CONTRACT ID.	
PROJECT NO.	
BRIDGE NO.	
DESCRIPTION	DATE
MISSOURI HIGHWAYS AND TRANSPORTATION COMMISSION	
PRELIMINARY PLAN PLAN SHEET SHEET 5 OF 5	
105 WEST CAPITOL JEFFERSON CITY, MO 65102 1-888-ASK-MODOT (1-888-275-6636)	

IF A SEAL IS PRESENT ON THIS SHEET IT HAS BEEN ELECTRONICALLY SEALED AND DATED.



DATE PREPARED 10/2/2020	
ROUTE 61/67	STATE MO
DISTRICT SL	SHEET NO. 9
COUNTY JEFFERSON	
JOB NO. J6S3433	
CONTRACT ID.	
PROJECT NO.	
BRIDGE NO.	

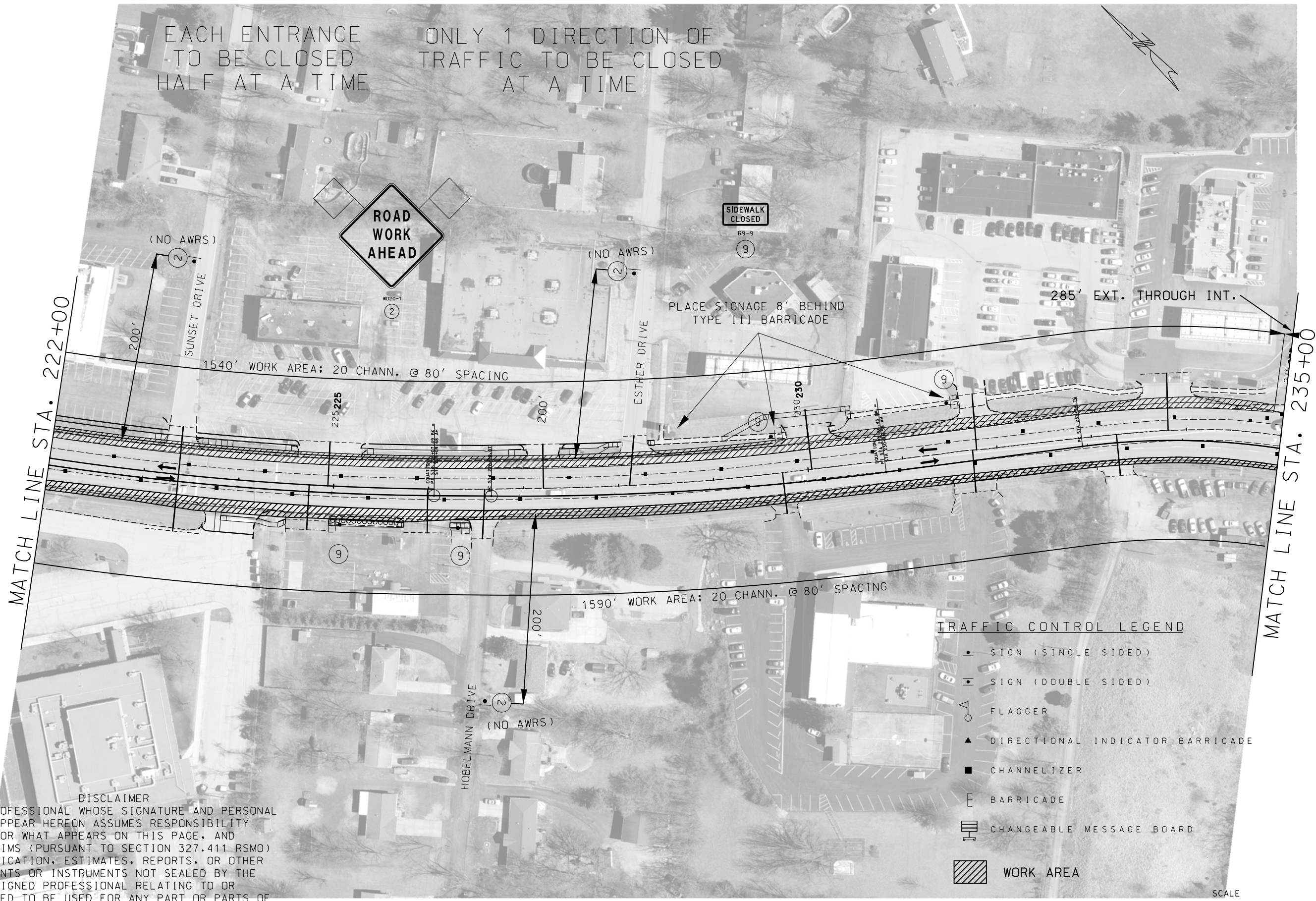
MISSOURI HIGHWAYS AND TRANSPORTATION COMMISSION

MoDOT

105 WEST CAPITOL
JEFFERSON CITY, MO 65102
1-888-ASK-MODOT (1-888-275-6636)

PRELIMINARY PLAN
TRAFFIC CONTROL SHEET
STAGE 1

IF A SEAL IS PRESENT ON THIS SHEET IT HAS BEEN ELECTRONICALLY SEALED AND DATED.




EACH ENTRANCE
TO BE CLOSED
HALF AT A TIME

ONLY 1 DIRECTION OF
TRAFFIC TO BE CLOSED
AT A TIME



- TRAFFIC CONTROL LEGEND
- SIGN (SINGLE SIDED)
 - SIGN (DOUBLE SIDED)
 - FLAGGER
 - ▲ DIRECTIONAL INDICATOR BARRICADE
 - CHANNELIZER
 - E BARRICADE
 - CHANGEABLE MESSAGE BOARD
 - WORK AREA

DISCLAIMER
THE PROFESSIONAL WHOSE SIGNATURE AND PERSONAL SEAL APPEAR HEREON ASSUMES RESPONSIBILITY ONLY FOR WHAT APPEARS ON THIS PAGE, AND DISCLAIMS (PURSUANT TO SECTION 327.411 RSMO) SPECIFICATION, ESTIMATES, REPORTS, OR OTHER DOCUMENTS OR INSTRUMENTS NOT SEALED BY THE UNDERSIGNED PROFESSIONAL RELATING TO OR INTENDED TO BE USED FOR ANY PART OR PARTS OF THE PROJECT TO WHICH THIS PAGE REFERS.

DATE PREPARED 10/2/2020	
ROUTE 61/67	STATE MO
DISTRICT SL	SHEET NO. 11
COUNTY JEFFERSON	
JOB NO. J6S3433	
CONTRACT ID.	
PROJECT NO.	
BRIDGE NO.	
DATE	DESCRIPTION
MISSOURI HIGHWAYS AND TRANSPORTATION COMMISSION	
	
105 WEST CAPITOL JEFFERSON CITY, MO 65102 1-888-ASK-MODOT (1-888-275-6636)	
PRELIMINARY PLAN TRAFFIC CONTROL SHEET STAGE 1	

IF A SEAL IS PRESENT ON THIS SHEET IT HAS BEEN ELECTRONICALLY SEALED AND DATED.



DATE PREPARED		10/2/2020
ROUTE	STATE	61/67 MO
DISTRICT	SHEET NO.	SL 13
COUNTY		JEFFERSON
JOB NO.		J6S3433
CONTRACT ID.		

PROJECT NO.	
BRIDGE NO.	

DATE	DESCRIPTION

MISSOURI HIGHWAYS AND TRANSPORTATION COMMISSION

MoDOT

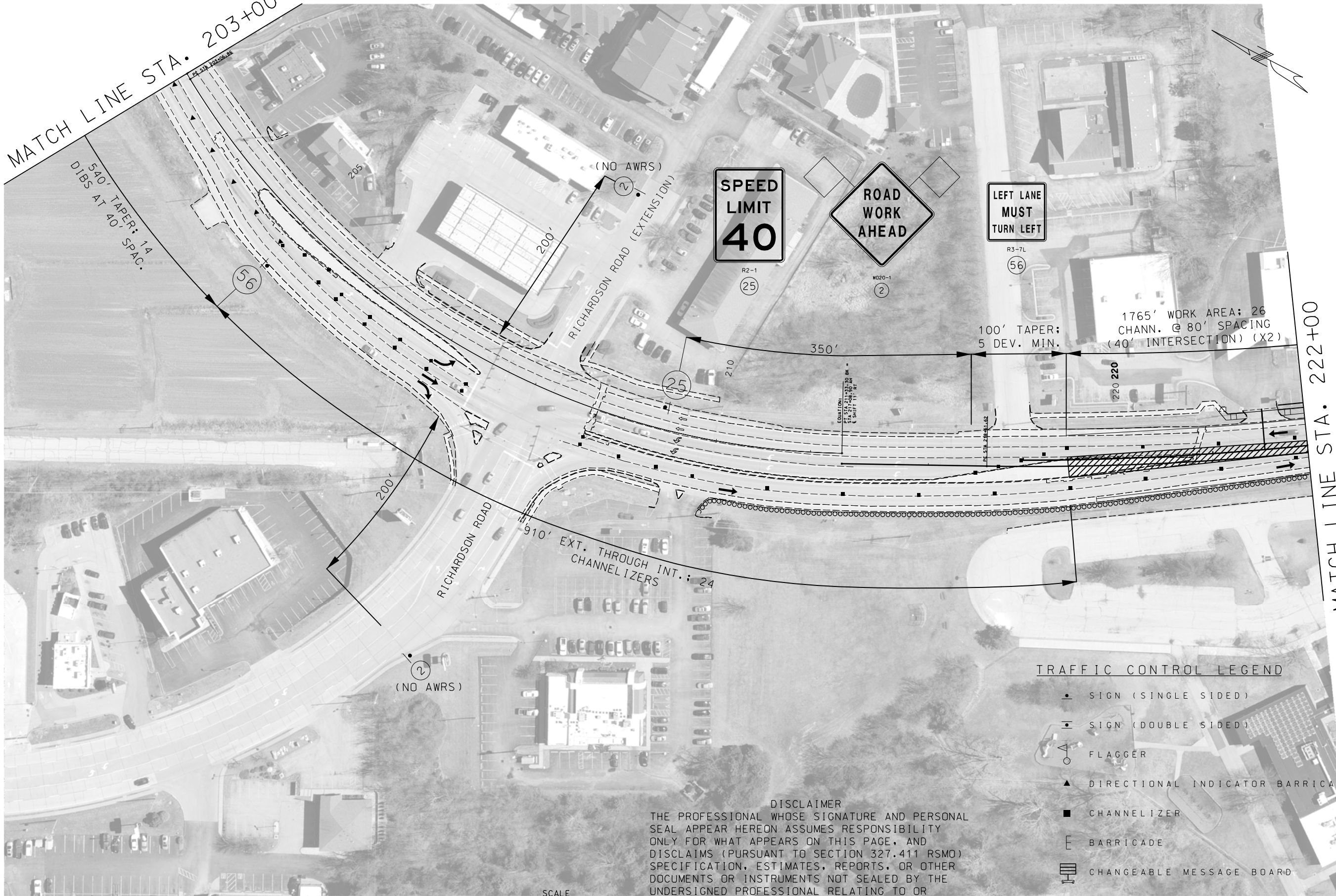
105 WEST CAPITOL
JEFFERSON CITY, MO 65102
1-888-ASK-MODOT (1-888-275-6636)

PRELIMINARY PLAN
TRAFFIC CONTROL SHEET
STAGE 2

IF A SEAL IS PRESENT ON THIS SHEET IT HAS BEEN ELECTRONICALLY SEALED AND DATED.


MATCH LINE STA. 203+00

540' TAPER; 14
DIBS AT 40' SPAC.

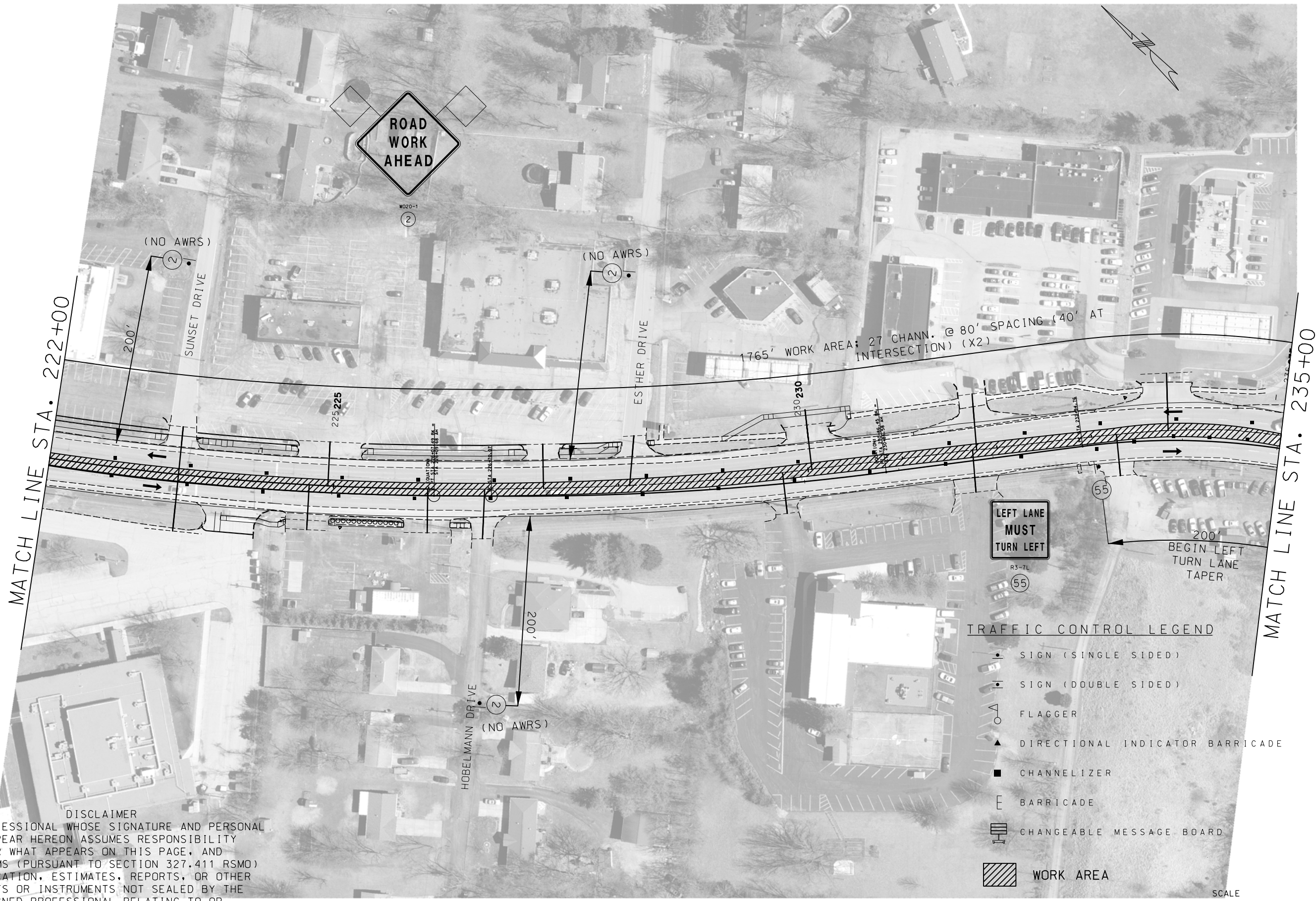


DISCLAIMER
THE PROFESSIONAL WHOSE SIGNATURE AND PERSONAL
SEAL APPEAR HEREON ASSUMES RESPONSIBILITY
ONLY FOR WHAT APPEARS ON THIS PAGE, AND
DISCLAIMS (PURSUANT TO SECTION 327.411 RSMO)
SPECIFICATION, ESTIMATES, REPORTS, OR OTHER
DOCUMENTS OR INSTRUMENTS NOT SEALED BY THE
UNDERSIGNED PROFESSIONAL RELATING TO OR
INTENDED TO BE USED FOR ANY PART OR PARTS OF
THE PROJECT TO WHICH THIS PAGE REFERS.

- TRAFFIC CONTROL LEGEND
- SIGN (SINGLE SIDED)
 - SIGN (DOUBLE SIDED)
 - ▲ FLAGGER
 - ▲ DIRECTIONAL INDICATOR BARRICADE
 - CHANNELIZER
 - ⌈ BARRICADE
 - ⌈ CHANGEABLE MESSAGE BOARD
 - ▨ WORK AREA

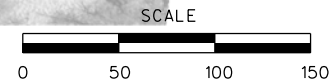
DATE PREPARED 10/2/2020	
ROUTE 61/67	STATE MO
DISTRICT SL	SHEET NO. 14
COUNTY JEFFERSON	
JOB NO. J6S3433	
CONTRACT ID.	
PROJECT NO.	
BRIDGE NO.	
DATE	DESCRIPTION
MISSOURI HIGHWAYS AND TRANSPORTATION COMMISSION	
	
105 WEST CAPITOL JEFFERSON CITY, MO 65102 1-888-ASK-MODOT (1-888-275-6636)	
PRELIMINARY PLAN TRAFFIC CONTROL SHEET STAGE 2	

IF A SEAL IS PRESENT ON THIS SHEET IT HAS BEEN ELECTRONICALLY SEALED AND DATED.



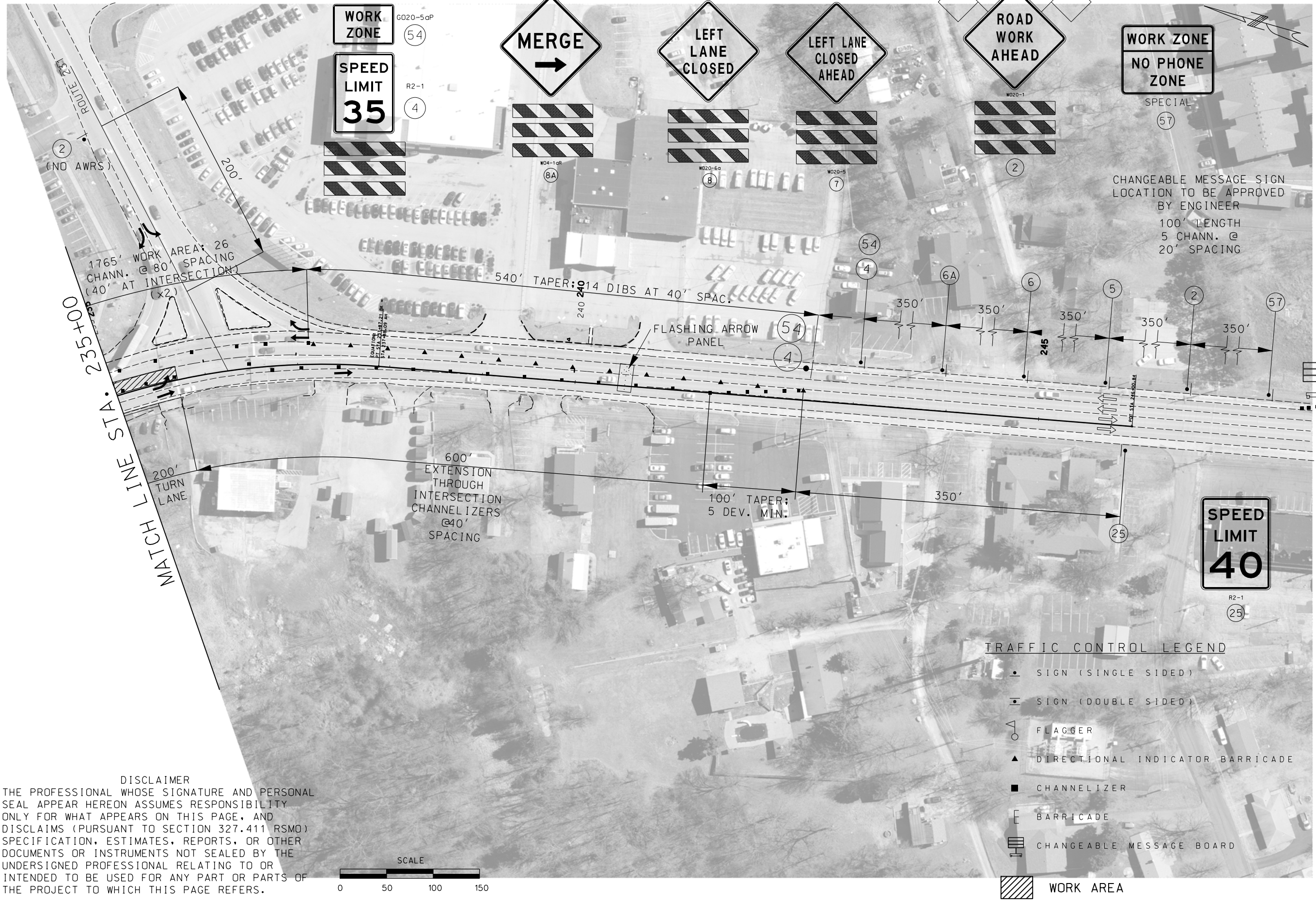
DISCLAIMER
THE PROFESSIONAL WHOSE SIGNATURE AND PERSONAL SEAL APPEAR HEREON ASSUMES RESPONSIBILITY ONLY FOR WHAT APPEARS ON THIS PAGE, AND DISCLAIMS (PURSUANT TO SECTION 327.411 RSMO) SPECIFICATION, ESTIMATES, REPORTS, OR OTHER DOCUMENTS OR INSTRUMENTS, NOT SEALED BY THE UNDERSIGNED PROFESSIONAL RELATING TO OR INTENDED TO BE USED FOR ANY PART OR PARTS OF THE PROJECT TO WHICH THIS PAGE REFERS.


- TRAFFIC CONTROL LEGEND
- SIGN (SINGLE SIDED)
 - |— SIGN (DOUBLE SIDED)
 - FLAGGER
 - ▲ DIRECTIONAL INDICATOR BARRICADE
 - CHANNELIZER
 - |— BARRICADE
 - |||| CHANGEABLE MESSAGE BOARD
 - ▨ WORK AREA



DATE PREPARED 10/2/2020	
ROUTE 61/67	STATE MO
DISTRICT SL	SHEET NO. 15
COUNTY JEFFERSON	
JOB NO. J6S3433	
CONTRACT ID.	
PROJECT NO.	
BRIDGE NO.	
DESCRIPTION	DATE
MISSOURI HIGHWAYS AND TRANSPORTATION COMMISSION	
105 WEST CAPITOL JEFFERSON CITY, MO 65102 1-888-ASK-MODOT (1-888-275-6636)	
PRELIMINARY PLAN TRAFFIC CONTROL SHEET STAGE 2	

IF A SEAL IS PRESENT ON THIS SHEET IT HAS BEEN ELECTRONICALLY SEALED AND DATED.

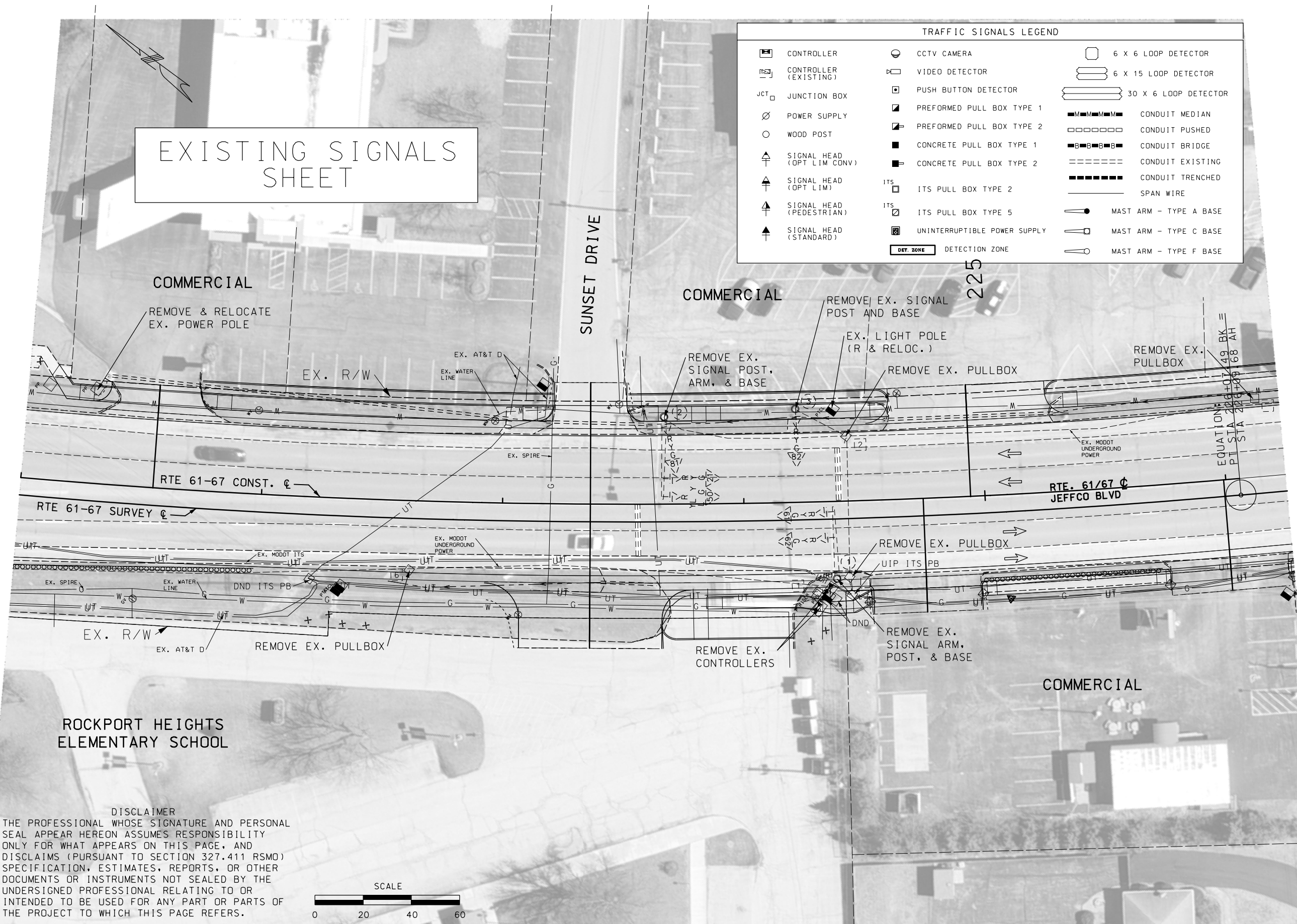


DATE PREPARED 10/2/2020	
ROUTE 61/67	STATE MO
DISTRICT SL	SHEET NO. 16
COUNTY JEFFERSON	
JOB NO. J6S3433	
CONTRACT ID.	
PROJECT NO.	
BRIDGE NO.	
DESCRIPTION	
DATE	
MISSOURI HIGHWAYS AND TRANSPORTATION COMMISSION	
	
105 WEST CAPITOL JEFFERSON CITY, MO 65102 1-888-ASK-MODOT (1-888-275-6636)	
PRELIMINARY PLAN TRAFFIC CONTROL SHEET STAGE 2	

IF A SEAL IS PRESENT ON THIS SHEET IT HAS BEEN ELECTRONICALLY SEALED AND DATED.

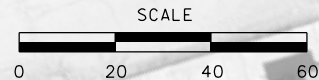
EXISTING SIGNALS SHEET

TRAFFIC SIGNALS LEGEND					
	CONTROLLER		CCTV CAMERA		6 X 6 LOOP DETECTOR
	CONTROLLER (EXISTING)		VIDEO DETECTOR		6 X 15 LOOP DETECTOR
	JUNCTION BOX		PUSH BUTTON DETECTOR		30 X 6 LOOP DETECTOR
	POWER SUPPLY		PREFORMED PULL BOX TYPE 1		CONDUIT MEDIAN
	WOOD POST		PREFORMED PULL BOX TYPE 2		CONDUIT PUSHED
	SIGNAL HEAD (OPT LIM CONV)		CONCRETE PULL BOX TYPE 1		CONDUIT BRIDGE
	SIGNAL HEAD (OPT LIM)		CONCRETE PULL BOX TYPE 2		CONDUIT EXISTING
	SIGNAL HEAD (PEDESTRIAN)		ITS PULL BOX TYPE 2		CONDUIT TRENCHED
	SIGNAL HEAD (STANDARD)		ITS PULL BOX TYPE 5		SPAN WIRE
			UNINTERRUPTIBLE POWER SUPPLY		MAST ARM - TYPE A BASE
			DETECTION ZONE		MAST ARM - TYPE C BASE
					MAST ARM - TYPE F BASE



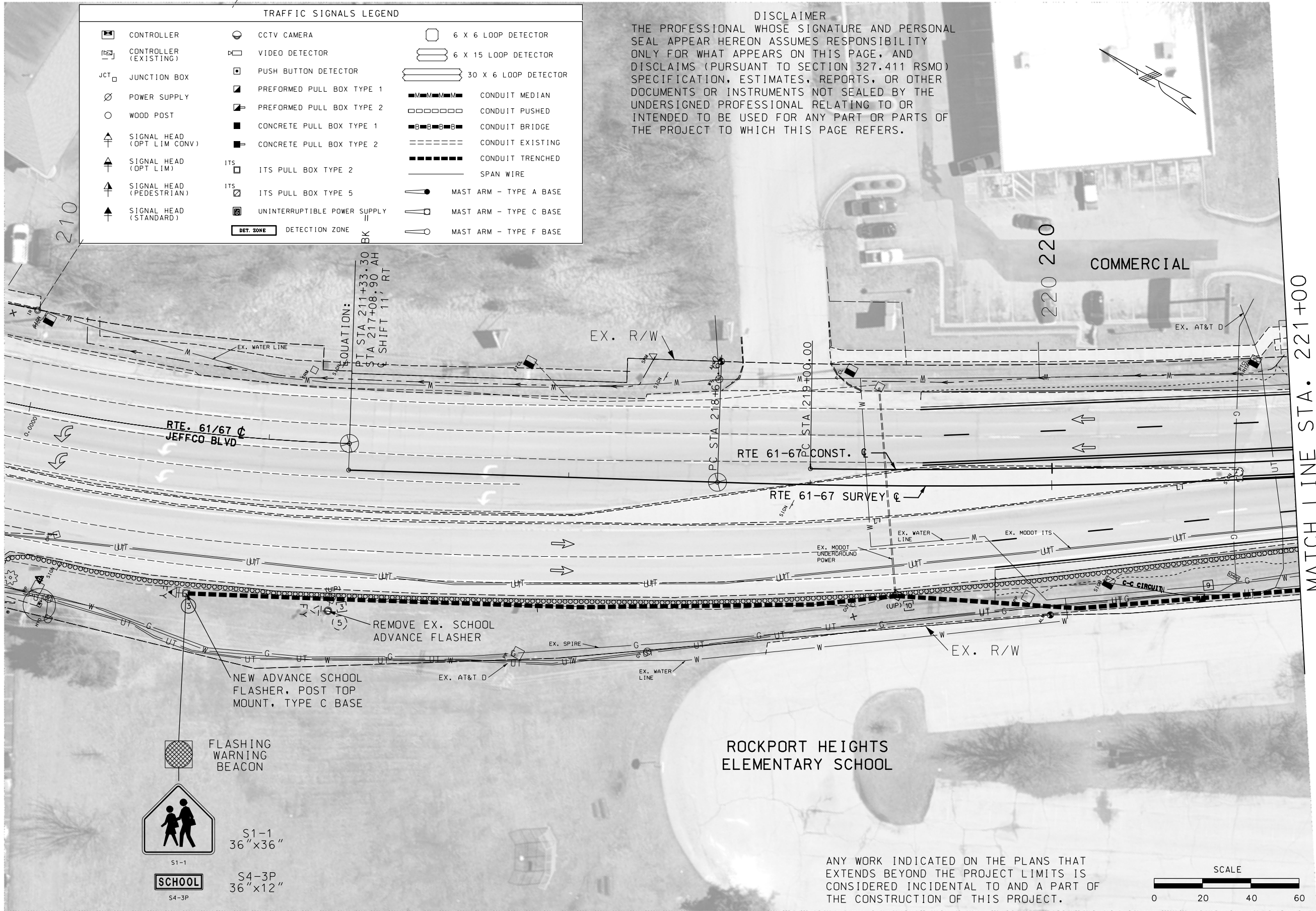
ROCKPORT HEIGHTS
ELEMENTARY SCHOOL

DISCLAIMER
THE PROFESSIONAL WHOSE SIGNATURE AND PERSONAL SEAL APPEAR HEREON ASSUMES RESPONSIBILITY ONLY FOR WHAT APPEARS ON THIS PAGE, AND DISCLAIMS (PURSUANT TO SECTION 327.411 RSMO) SPECIFICATION, ESTIMATES, REPORTS, OR OTHER DOCUMENTS OR INSTRUMENTS NOT SEALED BY THE UNDERSIGNED PROFESSIONAL RELATING TO OR INTENDED TO BE USED FOR ANY PART OR PARTS OF THE PROJECT TO WHICH THIS PAGE REFERS.

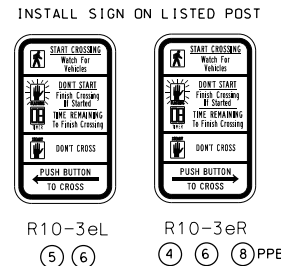
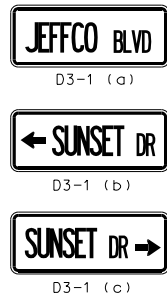


DATE PREPARED 10/2/2020	
ROUTE 61/67	STATE MO
DISTRICT SL	SHEET NO. 17
COUNTY JEFFERSON	
JOB NO. J6S3433	
CONTRACT ID.	
PROJECT NO.	
BRIDGE NO.	
DATE	DESCRIPTION
MISSOURI HIGHWAYS AND TRANSPORTATION COMMISSION	
105 WEST CAPITOL JEFFERSON CITY, MO 65102 1-888-ASK-MODOT (1-888-275-6636)	
PRELIMINARY PLAN EXISTING SIGNALS SHEET SHEET 1 OF 1	

IF A SEAL IS PRESENT ON THIS SHEET IT HAS BEEN ELECTRONICALLY SEALED AND DATED.



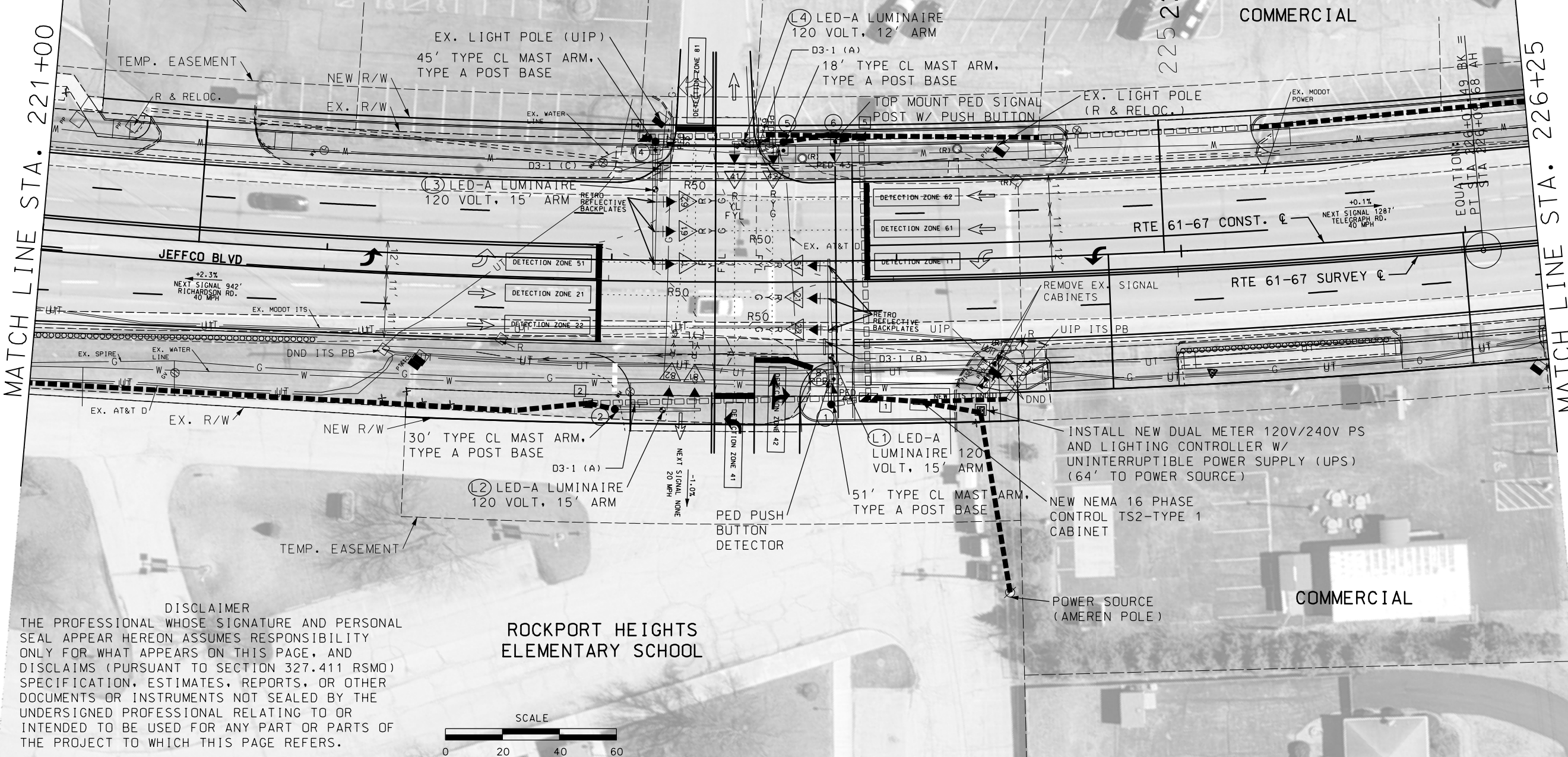
DATE PREPARED		10/2/2020	
ROUTE	STATE	61/67	MO
DISTRICT	SHEET NO.	SL	18
COUNTY			
JEFFERSON			
JOB NO.			
J6S3433			
CONTRACT ID.			
PROJECT NO.			
BRIDGE NO.			
DESCRIPTION		DATE	
MISSOURI HIGHWAYS AND TRANSPORTATION COMMISSION		105 WEST CAPITOL JEFFERSON CITY, MO 65102 1-888-ASK-MODOT (1-888-275-6636)	
PRELIMINARY PLAN SIGNAL SHEET		IF A SEAL IS PRESENT ON THIS SHEET IT HAS BEEN ELECTRONICALLY SEALED AND DATED.	



TRAFFIC SIGNALS & LIGHTING LEGEND			
	CONTROLLER		CCTV CAMERA
	CONTROLLER (EXISTING)		VIDEO DETECTOR
	JUNCTION BOX		PUSH BUTTON DETECTOR
	POWER SUPPLY		PREFORMED PULL BOX TYPE 1
	WOOD POST		PREFORMED PULL BOX TYPE 2
	SIGNAL HEAD (OPT LIM CONV)		CONCRETE PULL BOX TYPE 1
	SIGNAL HEAD (OPT LIM)		CONCRETE PULL BOX TYPE 2
	SIGNAL HEAD (PEDESTRIAN)		ITS PULL BOX TYPE 2
	SIGNAL HEAD (STANDARD)		ITS PULL BOX TYPE 5
	LED-A LUMINAIRE		UNINTERRUPTIBLE POWER SUPPLY
			DETECTION ZONE
			6 X 6 LOOP DETECTOR
			6 X 15 LOOP DETECTOR
			30 X 6 LOOP DETECTOR
			CONDUIT MEDIAN
			CONDUIT PUSHED
			CONDUIT BRIDGE
			CONDUIT EXISTING
			CONDUIT TRENCHED
			SPAN WIRE
			MAST ARM - TYPE A BASE
			MAST ARM - TYPE C BASE
			MAST ARM - TYPE F BASE

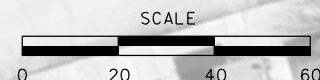
MATCH LINE STA. 221+00

MATCH LINE STA. 226+25



DISCLAIMER
THE PROFESSIONAL WHOSE SIGNATURE AND PERSONAL SEAL APPEAR HEREON ASSUMES RESPONSIBILITY ONLY FOR WHAT APPEARS ON THIS PAGE, AND DISCLAIMS (PURSUANT TO SECTION 327.411 RSMO) SPECIFICATION, ESTIMATES, REPORTS, OR OTHER DOCUMENTS OR INSTRUMENTS NOT SEALED BY THE UNDERSIGNED PROFESSIONAL RELATING TO OR INTENDED TO BE USED FOR ANY PART OR PARTS OF THE PROJECT TO WHICH THIS PAGE REFERS.

ROCKPORT HEIGHTS
ELEMENTARY SCHOOL



DATE PREPARED
10/2/2020

ROUTE
61/67

DISTRICT
SL

COUNTY
JEFFERSON

JOB NO.
J6S3433

CONTRACT ID.

PROJECT NO.

BRIDGE NO.

DESCRIPTION

DATE

MISSOURI HIGHWAYS AND TRANSPORTATION
COMMISSION

105 WEST CAPITOL
JEFFERSON CITY, MO 65102
1-888-ASK-MODOT (1-888-275-6636)

PRELIMINARY PLAN
SIGNAL SHEET

RTE. 61/67 @ SUNSET DR./ROCKPORT
HEIGHTS ELEMENTARY SCHOOL

MATCH LINE STA. 226+25

HOBELMAN DRIVE

COMMERCIAL

ESTHER DRIVE

FLASHING
WARNING
BEACON

S1-1
36"x36"

S4-3P
36"x12"



COMMERCIAL

NEW ADVANCE SCHOOL
FLASHER, POST TOP
MOUNT, TYPE C BASE

REMOVE EX. SCHOOL
ADVANCE FLASHER

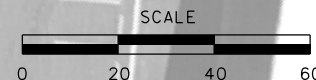
MATCH LINE STA. 231+50

JEFFCO BLVD

COMMERCIAL

DISCLAIMER

THE PROFESSIONAL WHOSE SIGNATURE AND PERSONAL SEAL APPEAR HEREON ASSUMES RESPONSIBILITY ONLY FOR WHAT APPEARS ON THIS PAGE, AND DISCLAIMS (PURSUANT TO SECTION 327.411 RSMO) SPECIFICATION, ESTIMATES, REPORTS, OR OTHER DOCUMENTS OR INSTRUMENTS NOT SEALED BY THE UNDERSIGNED PROFESSIONAL RELATING TO OR INTENDED TO BE USED FOR ANY PART OR PARTS OF THE PROJECT TO WHICH THIS PAGE REFERS.



TRAFFIC SIGNALS LEGEND

CONTROLLER	CCTV CAMERA	6 X 6 LOOP DETECTOR
CONTROLLER (EXISTING)	VIDEO DETECTOR	6 X 15 LOOP DETECTOR
JUNCTION BOX	PUSH BUTTON DETECTOR	30 X 6 LOOP DETECTOR
POWER SUPPLY	PREFORMED PULL BOX TYPE 1	CONDUIT MEDIAN
WOOD POST	PREFORMED PULL BOX TYPE 2	CONDUIT PUSHED
SIGNAL HEAD (OPT LIM CONV)	CONCRETE PULL BOX TYPE 1	CONDUIT BRIDGE
SIGNAL HEAD (OPT LIM)	CONCRETE PULL BOX TYPE 2	CONDUIT EXISTING
SIGNAL HEAD (PEDESTRIAN)	ITS PULL BOX TYPE 2	CONDUIT TRENCHED
SIGNAL HEAD (STANDARD)	ITS PULL BOX TYPE 5	SPAN WIRE
	UNINTERRUPTIBLE POWER SUPPLY	MAST ARM - TYPE A BASE
DET. ZONE	DETECTION ZONE	MAST ARM - TYPE C BASE
		MAST ARM - TYPE F BASE

MISSOURI HIGHWAYS AND TRANSPORTATION
COMMISSION



105 WEST CAPITOL
JEFFERSON CITY, MO 65102
1-888-ASK-MODOT (1-888-275-6636)

PRELIMINARY PLAN
SIGNAL SHEET

DESCRIPTION

DATE

DATE

DATE

DATE

DATE

DATE

DATE

DATE PREPARED
10/2/2020
ROUTE
61/67
STATE
MO
DISTRICT
SL
SHEET NO.
20
COUNTY
JEFFERSON
JOB NO.
J6S3433
CONTRACT ID.

PROJECT NO.

BRIDGE NO.

DESCRIPTION

DATE

DATE

DATE

DATE

DATE

DATE

DATE

IF A SEAL IS PRESENT ON THIS SHEET IT HAS BEEN ELECTRONICALLY SEALED AND DATED.

