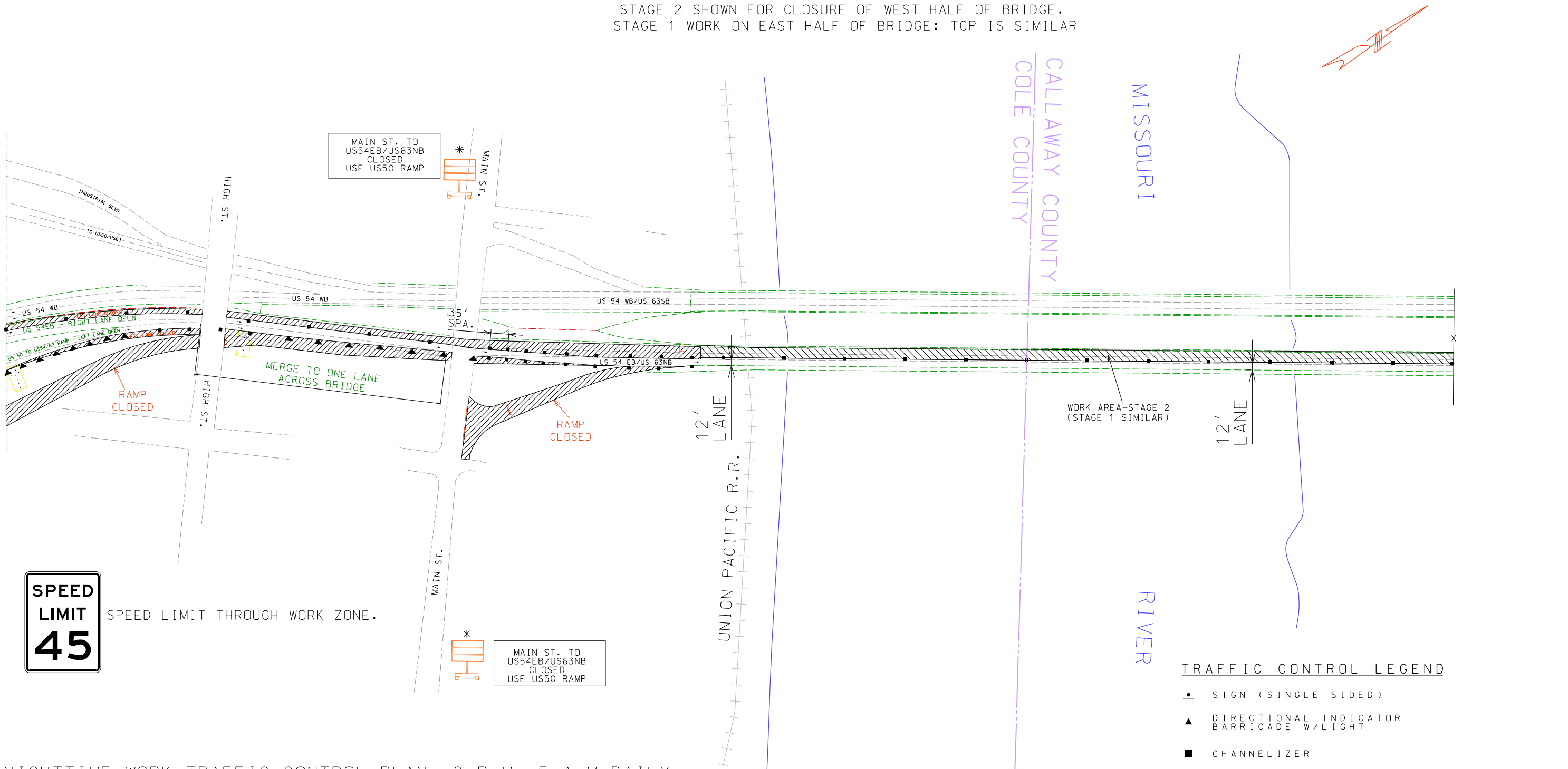


PROPOSED TRAFFIC CONTROL PLAN – OVERLAY WORK ON EB54/NB63 BRIDGE
STAGE 2 SHOWN FOR CLOSURE OF WEST HALF OF BRIDGE.
STAGE 1 WORK ON EAST HALF OF BRIDGE: TCP IS SIMILAR



TRAFFIC CONTROL LEGEND

- SIGN (SINGLE SIDED)
- ▲ DIRECTIONAL INDICATOR BARRICADE W/LIGHT
- CHANNELIZER
- E TYPE III MOVABLE BARRICADE W/LIGHTS
- Changeable Message Board*
- Flashing Arrow Board

* CMS LOCATION AND MESSAGE TO BE APPROVED BY THE ENGINEER.

NIGHTTIME WORK TRAFFIC CONTROL PLAN. 8 P.M.-5 A.M.DAILY
ALL LANES OPEN DURING DAYTIME HOURS.
MAIN STREET RAMP CLOSED. TRAFFIC TO USE RTE. 50 RAMP TO US 54EB/63NB
MCCARTY STREET RAMP CLOSED. TRAFFIC TO USE RTE. 50 RAMP TO US 54EB/63NB.
US50 TO US54EB/US63NB RAMP REDUCED TO ONE LANE.

SPEED LIMIT THROUGH WORK ZONE WILL TYPICALLY BE 45 MPH,
UNLESS CONDITIONS AT THE TIME OF CONSTRUCTION WARRANT FURTHER
SPEED REDUCTIONS.

