




transportation • trails • water • process • construction management

ADDENDUM 003
Request for Bid
St. Louis Economic Development Partnership
for Constructing or Improving
Olive / Lindbergh Interchange
STP-4922(604)

Bidders should acknowledge receipt of Addendum 003 (THREE) by signing and including it with the original bid. The due date for receipt of bids **has not** changed by this Addendum; the due date is **June 26, 2020 10:00 AM Central Time**. Accordingly, the following clarifications, and or additional information, are believed to be of general interest to all potential bidders. All other terms and conditions remain unchanged and in full force.

| | |
|---|---|
| Name and Title of Signer (Print or Type) | Name and Title of Authority Mike Brown Project Manager |
| Contractor/Offeror Signature _____ (Signature of person authorized to sign) | Access Engineering, LLC  _____ (Authoring Signature) |
| Date Signed: | Date Signed: 6/22/2020 |

- 1) Notice to Contractors, Table of Contents, added Section 20 Tax Exempt Status.
- 2) Notice to Contractors, page 5 of 5, added Section 20 Tax Exempt Status.
- 3) Bridge Sheet 1 of 11 will replace Alt 04 Protective Coating.
- 4) Itemized Bid Form Page 7 of 7 will replace Alt 04 Protective Coating.
- 5) Itemized Bid Form Page 2 of 7 will replace Compacting Embankment.
- 6) Itemized Bid Form Page 6 of 7 will add Settlement Gauge.
- 7) Add JSP FFF. Settlement Monitoring.
- 8) Itemized Bid Form Page 6 of 7 will set the unit bid price for Misc. Ameren Connections.
- 9) Contractor's questions from after Pre-Bid Meeting.
- 10) Special Sheet SS005, structure reinforcing is not required if cast in place.
- 11) Revised JSP G for aggregate material required
- 12) Quantity Sheet 1 of 4, Compacting Embankment quantity revised

TABLE OF CONTENTS

Notice to Contractors

Proposed Work (1)
Compliance With Contract Provisions (2)
Period of Performance (3)
Liquidated Damages (4)
Bid Guaranty (5)
Certifications for Federal Jobs..... (6)
Antidiscrimination (7)
Federal and State Inspection..... (8)
Prevailing Wage (9)
Worker Eligibility Requirements..... (10)
OSHA Training Requirements (11)
Buy America Requirements..... (12)
Addendum Acknowledgement (13)
Signature and Identity of Bidder..... (14)
Trainees (15)
Subcontractor Disclosure..... (16)
Project Award..... (17)
Materials Inspections.....(18)
Prime Contractor Requirements (19)
Tax Exempt Status..... (20)



ADDED

Itemized Bid Sheets

Bid Bond

DBE Identification Submittal

DBE Provisions

Job Special Provisions

Form FHWA 1273

Federal Aid Provisions

Applicable State Wage Rates

Applicable Environmental and Cultural Permits and Clearances

ADA Checklist

Utility Plans of Adjustment

Geotechnical Report

THE BIDDER CERTIFIES THAT THE BIDDER'S COMPANY KNOWINGLY EMPLOYS ONLY INDIVIDUALS WHO ARE AUTHORIZED TO WORK IN THE UNITED STATES IN ACCORDANCE WITH APPLICABLE FEDERAL AND STATE LAWS AND ALL PROVISIONS OF MISSOURI EXECUTIVE ORDER NO. 07-13 FOR CONTRACTS WITH THE CONTRACTING AUTHORITY.

Check this box ONLY if the bidder REFUSES to make any or all of these certifications. The bidder may provide an explanation for the refusal(s) with this submittal.

Signature of Bidder's Owner, Officer, Partner or Authorized Agent

Please print or type name and title of person signing here

Attest:

Secretary of Corporation if Bidder is a Corporation

Affix Corporate Seal (If Bidder is a Corporation)

NOTE: If bidder is doing business under a fictitious name, the bid shall be executed in the legal name of the individual, partners, joint ventures, or corporation, and registration of fictitious name filed with the secretary of state, as required by sections 417.200 to 417.230 RSMo. If the bidder is a corporation not organized under the laws of Missouri, it shall procure a certificate of authority to do business in Missouri, as required by section 351.572 et seq RSMo. A certified copy of such registration of fictitious name or certificate of authority to do business in Missouri shall be filed with the Missouri Highways and Transportation Commission, as required by the standard specifications.

(15) **TRAINEES**: By submitting this bid, the bidder certifies that the bidder is familiar with the Training Provision in the Missouri Highways and Transportation Commission's "General Provisions and Supplement Specifications" which are available on the Missouri Department of Transportation web page at www.modot.mo.gov under "Business with MoDOT" "Standards and Specifications". The number of trainee hours provided under this contract will be 0 slots at 1000 hours per slot or **0 hours**.

(16) **SUBCONTRACTOR DISCLOSURE**: Requirements contained within Sec 102.7.8 of the Missouri Standard Specification for Highway Construction shall be waived for this contract.

(17) **PROJECT AWARD**: This project will be awarded to the lowest, responsive, responsible bidder.

(18) **MATERIALS INSPECTIONS**: All technicians who perform, or are required by the FHWA to witness, such sampling and testing shall be deemed as qualified by virtue of successfully completing the requirements of EPG 106.18 Technician Certification Program, for that specific technical area.

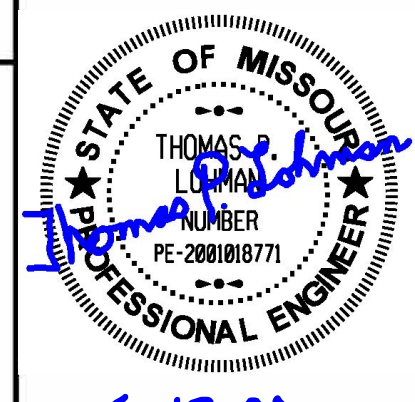
(19) **PRIME CONTRACTOR REQUIREMENTS**: The limitation in Sec 108.1.1 of the Missouri Standard Specifications for Highway Construction that "the contractor's organization shall perform work amounting to not less than 40 percent of the total contract cost" is waived for this contract. Instead, the less restrictive terms of the Federal Highway Administration's rule at Title 23 Code of Federal Regulations (CFR) § 635.116(a) shall apply, so that the contractor must perform project work with its own organization equal to and not less than 30 percent of the total original contract price. Second-tier subcontracting will not be permitted on this contract. All other provisions in Sec 108.1.1 et seq. of the Missouri Standard Specifications for Highway Construction shall remain in full force and effect, and shall continue to govern the contractor and its subcontractors, in accordance with the provisions of Title 23 CFR § 635.116.

(20) SALES AND USE TAX EXEMPTION: St. Louis Economic Development Partnership, a tax exempt entity, will furnish a Missouri Project Exemption Certificate as described in Section 144.062 RSMo to the awarded contractor who in turn may use the certificate to purchase materials for a specific project performed for the tax exempt entity. Only the materials and supplies incorporated or consumed during the construction of the project are exempt. The certificate will be issued to the contractor for a specific project for a defined period of time.

 **ADDED**

**U.I.P. EXISTING (48'-52'-52'-48') PRESTRESSED CONCRETE DECK BEAM BRIDGE
AND REPLACE BARRIERS**

SEC/SUR 1 TWP 45N RGE 5E



DATE PREPARED
6/19/2020

ROUTE 340 STATE MO
DISTRICT BR SHEET NO. 1

COUNTY
ST LOUIS

JOB NO.
1903400

CONTRACT ID.

PROJECT NO.
STP4922(604)

BRIDGE NO.
A66481

| DATE | DESCRIPTION | REVISED PAY ITEMS |
|---------|---|-------------------|
| 6/19/20 | MISSOURI HIGHWAYS AND TRANSPORTATION COMMISSION | |
| | MSD PROJECT 19MSD-00293 | |
| | MSD BASEMAP 17N2-17M1-17M2 | |

MISSOURI HIGHWAYS AND TRANSPORTATION COMMISSION

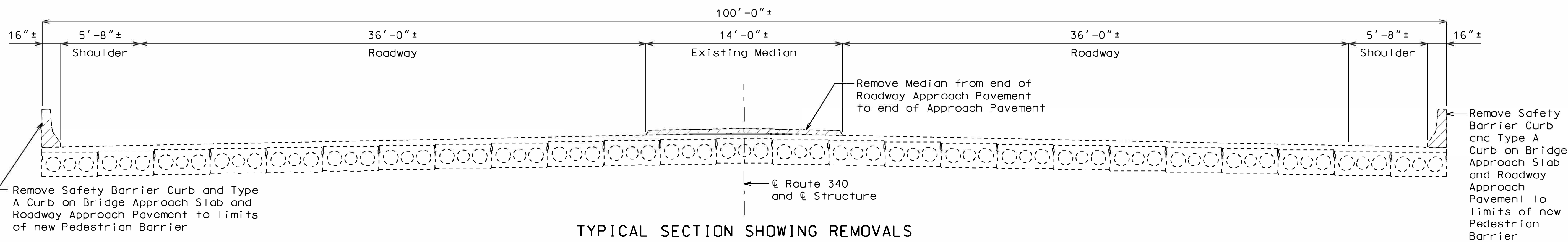
MODOT

105 WEST CAPITOL
JEFFERSON CITY, MO 65102
1-888-ASK-MODOT (1-888-275-6636)

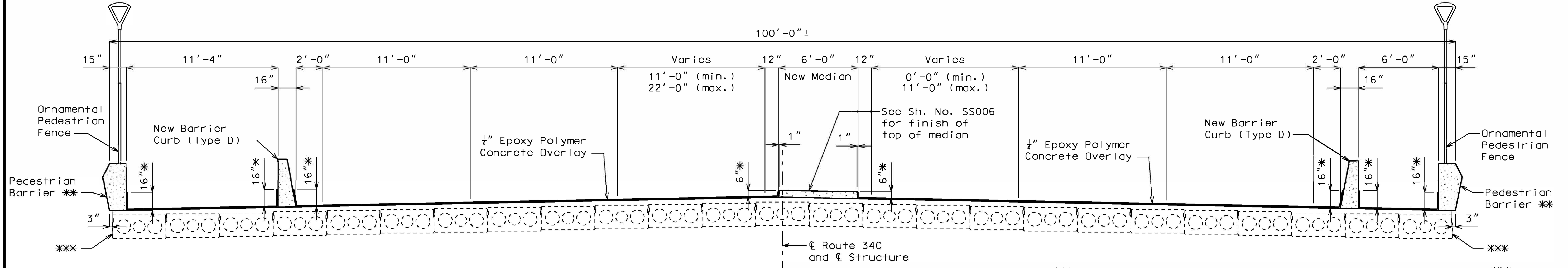
HORNER SHIFERIN

401 S. 18TH ST., STE. 400 SAINT LOUIS, MO 63103-2296
314-531-4321 • FAX 314-531-6966 • WWW.HORNERSHIFERIN.COM
DISCIPLINE: PROFESSIONAL ENGINEERING
CERTIFICATE OF AUTHORITY: 000159
EXPIRATION DATE: DECEMBER 31, 2020

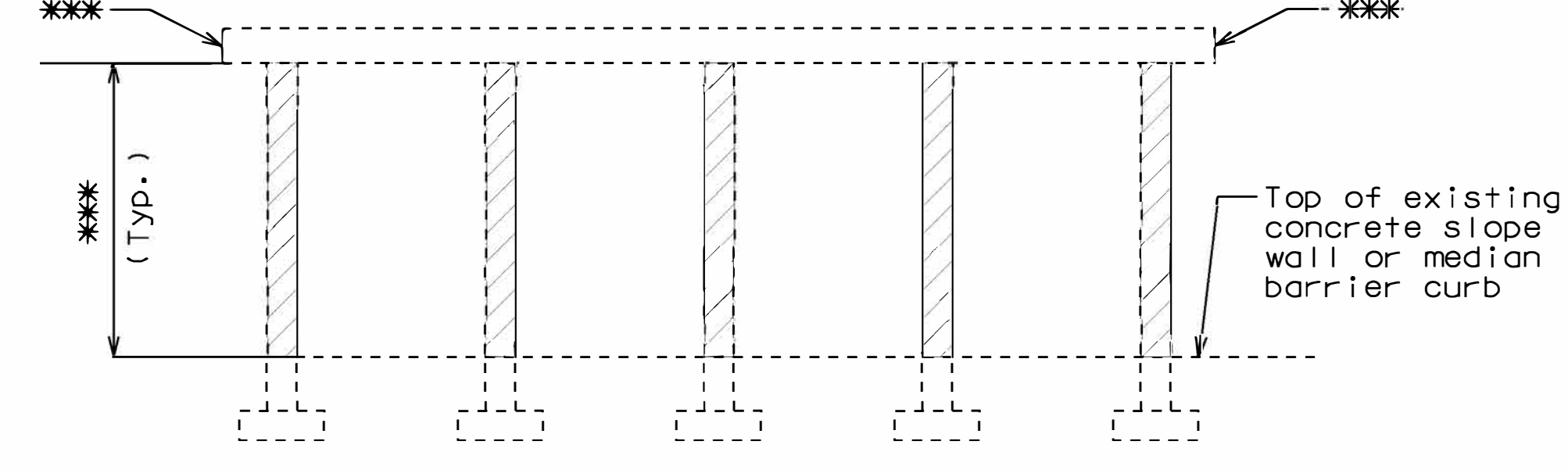
GENERAL PLAN AND ELEVATION
ROUTE 340
SHEET 1 OF 11



TYPICAL SECTION SHOWING REMOVALS

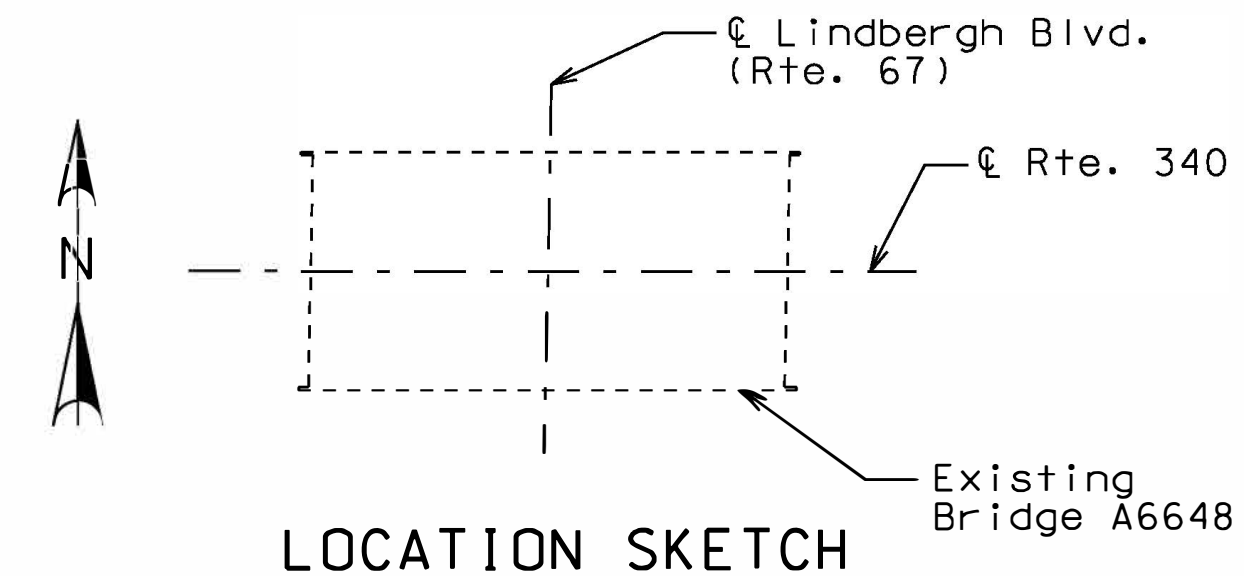


TYPICAL SECTION SHOWING NEW WORK



COATING DETAIL OF SUBSTRUCTURE AT INT. BENTS 2, 3 & 4

Note: See Job Special Provisions for details of Protective Coating - Concrete Bents and Piers (Epoxy) (Tinted).



BRIDGE: ROUTE 340 OVER LINDBERGH BOULEVARD (RTE. 67)

STATE ROAD FROM RTE. 1-270 TO 1-170
ABOUT 2.5 MILES EAST OF RTE. 1-270
STA. 241+82.17± (MATCH EXISTING)

C3 REVISED 06-19-2020

GENERAL NOTES:

Design Specifications:
2002 AASHTO LFD (17th Ed.) Standard Specifications

Design Loading:
HS20 Modified
35#/Sq. Ft. Future Wearing Surface

Design Unit Stresses:
Class B-1 Concrete (Raised Median Barrier, Type D Barrier Curb, and Pedestrian Barrier) $f'c = 4,000$ psi
Reinforcing Steel (Grade 60) $fy = 60,000$ psi

Joint Filler:
All joint filler shall be in accordance with Sec 1057 for preformed sponge rubber expansion and partition joint filler, except as noted.

Reinforcing Steel:
Minimum clearance to reinforcing steel shall be 1 1/2", unless otherwise shown.

All reinforcing steel shall be epoxy coated.

Miscellaneous:
Traffic to be maintained on structure during construction. See Roadway plans for traffic control and Sheet 2 for staged construction details.

The contractor shall exercise care to ensure spillage over joint edges is prevented and that a neat line is obtained along the terminating edge of the epoxy polymer concrete.

Contractor shall verify all dimensions in field before ordering new material.

Outline of old work is indicated by dashed lines. Heavy lines indicate new work.

The cost of resin anchor systems will be considered completely covered by the contract price for other items.

For additional requirements of Raised Median Barrier see Roadway Job Special Provision for Micro-exposed Aggregate Concrete Paving.

Notes:

Provide blackout through Barrier Curb (Type D) for stormwater drainage. See Barrier Curb sheets.

Pay limits of Epoxy Polymer overlay is from end of Roadway Approach Pavement to end of Roadway Approach Pavement.

* Limits of Epoxy Polymer Concrete Overlay

** Coat all exposed faces of Pedestrian Barrier not coated with Epoxy Polymer Overlay with Protective Coating - Concrete Bents and Piers (Epoxy) (Tinted). See Special Provisions.

*** Limits of Protective Coating - Concrete Bents and Piers (Epoxy) (Tinted)

| Estimated Quantities | | |
|--|------------|-------|
| Item | | Total |
| Base | | |
| Removal of Concrete Median | sq. ft. | 4200 |
| Curb Removal | linear ft. | 503 |
| Ornamental Pedestrian Fence (Structures) | linear ft. | 500 |
| Epoxy Polymer Concrete Overlay | sq. yard | 3264 |
| Barrier Curb (Type D) | linear ft. | 600 |
| Raised Median Barrier | sq. ft. | 1806 |
| Pedestrian Barrier | linear ft. | 500 |
| Conduit System on Structure | lump sum | 1 |
| Add Alt 03 | | |
| Conduit System on Structure (Pedestrian Lighting) | lump sum | 1 |
| Add Alt 04 | | |
| Pedestrian Barrier (Form Liner) | linear ft. | 500 |
| Protective Coating - Concrete Bents and Piers (Epoxy) (Tinted) | lump sum | 1 |
| Add Alt 05 | | |
| Light Pole and Fixture | each | 12 |
| Add Alt 06 | | |
| Raised Median Barrier (Exposed Aggregate Finish) | sq. ft. | 1806 |

C3 Protective Coating - Pedestrian Barrier, Concrete Bents and Piers (Epoxy) (Tinted)

Designed: TPL
Detailed: MAC
Checked: MAB

STD. 617.10
STD. 706.35

IF A SEAL IS PRESENT ON THIS SHEET IT HAS BEEN ELECTRONICALLY SEALED AND DATED.

3

REPLACED

| Sort Code | Pay Item ID | Pay Item Description | Quantity | Units | BidPrice | Bid Price Extension |
|----------------|-------------|--|------------------|-------|----------|---------------------|
| Roadway | | | | | | |
| 0 | 2022010 | REMOVAL OF IMPROVEMENTS | 1 | L.S. | | |
| 10 | 2031000 | CLASS A EXCAVATION | 13444 | C.Y. | | |
| 20 | 2035500 | EMBANKMENT IN PLACE | 8795 | C.Y. | | |
| 30 | 2036000 | COMPACTING EMBANKMENT | 11427 | C.Y. | | |
| | | | 13,444 | | | |
| 40 | 2037075 | COMPACTING IN CUT | 50 | STA. | | |
| 50 | 2063000 | CLASS 3 EXCAVATION | 781 | C.Y. | | |
| 60 | 2063500 | CULVERT CLEANOUT | 16 | EACH | | |
| 70 | 3040506 | TYPE 5 AGGREGATE FOR BASE (6 IN. THICK) | 18961 | S.Y. | | |
| 80 | 4010150 | TYPE A2 SHOULDER | 373.5 | S.Y. | | |
| 90 | 4030109 | ASPHALTIC CONCRETE MIXTURE PG 70-22 (SP125CLP MIX) | 237.9 | TON | | |
| 100 | 4039905 | MISC. {MAINLINE PAVEMENT} | 7337 | S.Y. | | |
| 110 | 4039905 {1} | MISC. {RAMP PAVEMENT} | 7989 | S.Y. | | |
| 120 | 4071005 | TACK COAT | 102 | GAL | | |
| 130 | 6044011 | "PIPE COLLAR, TYPE A" | 1 | EACH | | |
| 140 | 6081000 | CONCRETE MEDIAN | 655.1 | S.Y. | | |
| 150 | 6083006 | 6 IN. CONCRETE MEDIAN STRIP | 1093 | S.Y. | | |
| 160 | 6089902 | MISC. {ISLAND TUBULAR MARKER} | 50 | EACH | | |
| 170 | 6091010 | CONCRETE CURB (6 IN. HEIGHT AND UNDER) TYPE S | 701 | L.F. | | |
| 180 | 6091052 | CURB AND GUTTER TYPE B | 5112 | L.F. | | |
| 190 | 6097000 | ROCK LINING | 13 | C.Y. | | |
| 200 | 6113010 | FURNISHING TYPE 1 ROCK BLANKET | 356 | C.Y. | | |
| 210 | 6113030 | PLACING TYPE 1 ROCK BLANKET | 356 | C.Y. | | |
| 220 | 6141023 | GRATE AND BEARING PLATE (5 FT. X 2 FT. OR 1524 MM X 610 MM) | 1 | EACH | | |
| 230 | 6141120 | CURVED VANE GRATE AND FRAME (2 FT. X 2 FT. OR 600MM X 600MM) | 32 | EACH | | |
| 240 | 6143012 | "MANHOLE FRAME AND COVER, TYPE 2" | 2 | EACH | | |
| 250 | 6143020 | CURB INLET | 2 | EACH | | |
| 260 | 6169901 | MISC. {TEMPORARY TRAFFIC CONTROL (LUMP SUM)} | 1 | L.S. | | |
| 270 | 6169902 | MISC. {NTCIP COMPLIANT CHANGEABLE MESSAGE SIGN, CONTRACTOR FURNISHED/RETAINED} | 2 | EACH | | |
| 280 | 6171000 | "CONCRETE TRAFFIC BARRIER, TYPE A" | 20 | L.F. | | |
| 290 | 6173000 | "CONCRETE TRAFFIC BARRIER, TYPE C" | 628 | L.F. | | |
| 300 | 6181000 | MOBILIZATION | 1 | L.S. | | |
| 310 | 6181020 | ADDITIONAL MOBILIZATION FOR SEEDING | 4 | EACH | | |

| | | | | | | |
|----------------------------|-------------|--|-------|-------------------------------------|----|---|
| 320 | 6221001 | COLDMILLING BITUMINOUS PAVEMENT FOR REMOVAL OF SURFACING (3 IN. THICK OR LESS) | 1693 | S.Y. | | |
| 330 | 6274000 | CONTRACTOR FURNISHED SURVEYING AND STAKING | 1 | L.S. | | |
| 340 | 7261012 | 12 IN. PIPE GROUP A | 824 | L.F. | | |
| 350 | 7261015 | 15 IN. PIPE GROUP A | 68 | L.F. | | |
| 360 | 7261021 | 21 IN. PIPE GROUP A | 69 | L.F. | | |
| 370 | 7310048 | PRECAST CONCRETE MANHOLE - 48 IN. | 24 | L.F. | | |
| 380 | 7311022 | PRECAST CONCRETE DROP INLET 2 FT X 2 FT | 43 | L.F. | | |
| 390 | 7311030 | PRECAST CONCRETE DROP INLET 3 FT X 2 FT-6 IN. | 19 | L.F. | | |
| 400 | 7311052 | PRECAST CONCRETE DROP INLET 5 FT X 2 FT | 8 | L.F. | | |
| 410 | 7319902 | MISC. {SHALLOW INLET 2 FT X 2 FT W/ PIPE AND SPLASH PAD} | 27 | EACH | | |
| 420 | 7320612A | 12 IN. OR ALLOWED SUBSTITUTE GROUP A FLARED END SECTION | 6 | EACH | | |
| 430 | 7320621A | 21 IN. OR ALLOWED SUBSTITUTE GROUP A FLARED END SECTION | 1 | EACH | | |
| 440 | 8051000A | SEEDING - COOL SEASON MIXTURES | 6.3 | ACRE | | |
| 450 | 8061003 | SEDIMENT TRAP EXCAVATION | 18.7 | C.Y. | | |
| 460 | 8061005 | ROCK DITCH CHECK | 575 | L.F. | | |
| 470 | 8061007A | CURB INLET CHECK | 34 | EACH | | |
| 480 | 8061016 | SEDIMENT REMOVAL | 298 | C.Y. | | |
| 490 | 8061017 | TEMPORARY SEEDING AND MULCHING | 2.6 | ACRE | | |
| 500 | 8061019 | SILT FENCE | 12230 | L.F. | | |
| 510 | 8064133 | TYPE 1C EROSION CONTROL BLANKET | 411 | S.Y. | | |
| | | | | Roadway Subtotal | \$ | - |
| MGS Guardrail Items | | | | | | |
| 520 | 6061061 | "MGS GUARDRAIL, 8 FT. POSTS, 6 FT. - 3 IN. SPACING" | 712.5 | L.F. | | |
| 530 | 6061068 | MGS BRIDGE APPROACH TRANSITION SECTION (EXTENDED CURB) | 2 | EACH | | |
| 540 | 6061074 | MGS HEIGHT AND BLOCK TRANSITION | 2 | EACH | | |
| 550 | 6061080 | MGS END ANCHOR | 2 | EACH | | |
| 560 | 6063014 | TYPE A CRASHWORTHY END TERMINAL (MASH) | 4 | EACH | | |
| | | | | MGS Guardrail Items Subtotal | \$ | - |
| Lighting | | | | | | |
| 570 | 9011062 | LIGHTING POLE, 45 FT. OR 13.5 M, TYPE AT DESIGN 2 | 6 | EACH | | |
| 580 | 9013003 | CONDUIT, 3 IN. RIGID, IN TRENCH | 100 | L.F. | | |
| 590 | 9014003 | CONDUIT, 3 IN. RIGID, PUSHED | 621 | L.F. | | |
| 600 | 9016110 | PULL BOX, PREFORMED CLASS 1 | 6 | EACH | | |
| 610 | 9017008 {1} | CABLE, 8 AWG 1 CONDUCTOR | 1630 | L.F. | | |
| 620 | 9017110 | CABLE, 10 AWG 1 CONDUCTOR, POLE AND BRACKET | 600 | L.F. | | |

| | | | | | | |
|----------------|-------------|---|-------|--------------------------|----|---|
| 630 | 9017208 {1} | WIRE, 8 AWG, BARE NEUTRAL | 820 | L.F. | | |
| 640 | 9018245 | POLE FOUNDATION (45 FT. OR 13.5 M MOUNTING HEIGHT) | 6 | EACH | | |
| 650 | 9018613 | POWER SUPPLY ASSEMBLY, TYPE 2, 240/120 VOLT SERVICE, LIGHTING AND SIGNALS | 2 | EACH | | |
| 660 | 9019902 | REMOVE EXISTING LIGHT POLE & BASE | 3 | EACH | | |
| 670 | 9019902{1} | LUMINAIRE, LED-B, TENON MOUNT (POWDER COATED BLACK) | 6 | EACH | | |
| | | | | Lighting Subtotal | \$ | - |
| Signals | | | | | | |
| 680 | 9020213 | SIGNAL HEAD, TYPE 3S | 2 | EACH | | |
| 690 | 9020513 | SIGNAL HEAD, TYPE 3B | 16 | EACH | | |
| 700 | 9020515 | SIGNAL HEAD, TYPE 5B | 1 | EACH | | |
| 710 | 9020811 | SIGNAL HEAD, TYPE 1S, PEDESTRIAN | 16 | EACH | | |
| 720 | 9020833 | SH-FLAT SHEET - SIGNAL SIGN | 29.8 | S.F. | | |
| 730 | 9020834 | "SIGNAL SIGN, MOUNTING HARDWARE" | 24 | EACH | | |
| 740 | 9022708 | POST, SIGNAL 8 FT. OR 2.4 M | 2 | EACH | | |
| 750 | 9023215 | POST, TYPE C, 15 FT. ARM OR 4.6 M ARM | 2 | EACH | | |
| 760 | 9023235 | POST, TYPE C, 35 FT. ARM OR 10.7 M ARM | 1 | EACH | | |
| 770 | 9023245 | POST, TYPE C, 45 FT. ARM OR 13.7 M ARM | 2 | EACH | | |
| 780 | 9023250 | POST, TYPE C, 50 FT. ARM OR 15.2 M ARM | 2 | EACH | | |
| 790 | 9023255 | POST, TYPE C, 55 FT. ARM | 1 | EACH | | |
| 800 | 9024283 | CONTROLLER ASSEMBLY HOUSING, NEMA TS2 CONTROLLER | 2 | EACH | | |
| 810 | 9024920 | DETECTOR, PUSHBUTTON | 3 | EACH | | |
| 820 | 9024975 | VIDEO DETECTION SYSTEM | 2 | EACH | | |
| 830 | 9025200 | CONDUIT, 2 IN., TRENCH | 918 | L.F. | | |
| 840 | 9025300 | CONDUIT, 3 IN., TRENCH | 744 | L.F. | | |
| 850 | 9025400 | CONDUIT, 4 IN., TRENCH | 15 | L.F. | | |
| 860 | 9027200 | CONDUIT, 2 IN., PUSHED | 563 | L.F. | | |
| 870 | 9027300 | CONDUIT, 3 IN., PUSHED | 798 | L.F. | | |
| 880 | 9028208 | CABLE, 8 AWG 1 CONDUCTOR, POWER | 200 | L.F. | | |
| 890 | 9028308 | CABLE, 16 AWG 2 CONDUCTOR | 2800 | L.F. | | |
| 900 | 9028310 | CABLE, 16 AWG 5 CONDUCTOR | 2830 | L.F. | | |
| 910 | 9028311 | CABLE, 16 AWG 7 CONDUCTOR | 5690 | L.F. | | |
| 920 | 9028810 | "PULL BOX, PREFORMED CLASS 1" | 3 | EACH | | |
| 930 | 9028811 | PULL BOX, PREFORMED CLASS 2 | 10 | EACH | | |
| 940 | 9028812 | PULL BOX, PREFORMED CLASS 3 | 3 | EACH | | |
| 950 | 9028816 | PULL BOX, PREFORMED CLASS 5 | 2 | EACH | | |
| 960 | 9029100 | BASE, CONCRETE | 29.36 | C.Y. | | |
| 970 | 9029902 | TRAFFIC SIGNAL MAINTENANCE AND PROGRAMMING | 1 | EACH | | |
| 980 | 9029902 {2} | MISC. {DETECTOR, PUSHBUTTON SYSTEM W/APS} | 4 | EACH | | |
| 990 | 9029902{1} | SDLC PANEL | 2 | EACH | | |

| | | | | | | |
|--------------------------|-------------|---|-------|------|-----------------------------------|-------------|
| 1000 | 9029902{2} | NETWORK CONNECTED SIGNAL MONITOR | 2 | EACH | | |
| 1010 | 9029902{3} | RELOCATE/RETERMINATE FIBER OPTIC CABLES | 2 | EACH | | |
| 1020 | 9029902{4} | DRILL PULLBOX AND ATG | 2 | EACH | | |
| 1030 | 9029902{5} | PUSHBUTTON POST (POWDER COATED BLACK) {MISC.} | 2 | EACH | | |
| 1040 | 9029903 | FIBER OPTIC CABLE, 24 SINGLE MODE {FIBER OPTIC CABLE, 24 SINGLE MODE} | 2050 | L.F. | | |
| | | | | | Signals Subtotal | \$ - |
| Signing | | | | | | |
| 1050 | 9031010 | "CONCRETE FOOTINGS, EMBEDDED" | 11.5 | C.Y. | | |
| 1060 | 9031210 | STRUCTURAL STEEL POSTS | 3161 | LBS | | |
| 1070 | 9031220 | PIPE POSTS | 5741 | LBS | | |
| 1080 | 9031242 | 36 IN. SURFACE-MOUNT DELINEATOR POST | 3 | EACH | | |
| 1090 | 9035004A | SH-FLAT SHEET | 226.3 | S.F. | | |
| 1100 | 9035011A | ST-STRUCTURAL | 1058 | S.F. | | |
| 1110 | 9035069A | SHF-FLAT SHEET FLUORESCENT | 140.1 | S.F. | | |
| 1120 | 9039901 | MISC. {TUBULAR SIGN SUPPORT, TYPE C (20 FT)} | 1 | L.S. | | |
| 1130 | 9039901 {1} | MISC. {TUBULAR SIGN SUPPORT, TYPE C (20 FT)} | 1 | L.S. | | |
| | | | | | Signing Subtotal | \$ - |
| ITS Management | | | | | | |
| 1140 | 9109901 | MISC. {ITS ASSET MGMT TOOL} | 1 | L.S. | | |
| | | | | | Guardrail Subtotal | \$ - |
| Pavement Markings | | | | | | |
| 1310 | 6200015 | "PREFORMED THERMOPLASTIC PAVEMENT MARKING, 24 IN. WHITE" | 404 | L.F. | | |
| 1320 | 6200021 | "PREFORMED THERMOPLASTIC PAVEMENT MARKING, LEFT/RIGHT ARROW" | 37 | EACH | | |
| 1330 | 6200024 | "PREFORMED THERMOPLASTIC PAVEMENT MARKING, STRAIGHT ARROW" | 1 | EACH | | |
| 1340 | 6200042 {1} | "PREFORMED THERMOPLASTIC PAVEMENT MARKING, 12 IN WHITE, YIELD LINE TRIANGLES" | 51 | EACH | | |
| 1350 | 6205902A | "6 IN. WHITE HIGH BUILD WATERBORNE PAVEMENT MARKING PAINT, TYPE L BEADS" | 20574 | L.F. | | |
| 1360 | 6205903A | "6 IN. YELLOW HIGH BUILD WATERBORNE PAVEMENT MARKING PAINT, TYPE L BEADS" | 9804 | L.F. | | |
| 1370 | 6209902 | MISC. {LANE REDUCTION ARROW} | 4 | EACH | | |
| | | | | | Pavement Markings Subtotal | \$ - |

| Pedestrian Facilities | | | | | | |
|-----------------------|-------------|---|------|------|---------------------------------------|---------------|
| 1380 | 6081010 | CONCRETE CURB RAMP | 88 | S.Y. | | |
| 1390 | 6081012 | TRUNCATED DOMES | 417 | S.F. | | |
| 1400 | 6086004 | "CONCRETE SIDEWALK, 4 IN." | 3957 | S.Y. | | |
| | | | | | Pedestrian Facilities Subtotal | \$ - |
| Bridge | | | | | | |
| 1410 | 2164000 | CURB REMOVAL | 503 | L.F. | | |
| 1420 | 2169904 | MISC. {REMOVAL OF CONCRETE MEDIAN} | 4200 | S.F. | | |
| 1430 | 6079903 | MISC. {ORNAMENTAL PEDESTRIAN FENCE (STRUCTURES)} | 500 | L.F. | | |
| 1440 | 6233000 | EPOXY POLYMER CONCRETE OVERLAY | 3264 | S.Y. | | |
| 1450 | 7034219A | BARRIER CURB (TYPE D) | 600 | L.F. | | |
| 1460 | 7034420 | RAISED MEDIAN BARRIER | 1806 | S.F. | | |
| 1470 | 7039903 | MISC. {PEDESTRIAN BARRIER} | 500 | L.F. | | |
| 1480 | 7071000 | CONDUIT SYSTEM ON STRUCTURE | 1 | L.S. | | |
| | | | | | Bridge Subtotal | \$ - |
| Non-Contractual | | | | | | |
| 1490 | 9019902 {1} | MISC. {AMEREN CONNECTION} | 2 | EACH | \$0.00 | \$0.00 |
| 1500 | 9019902 {2} | MISC. {AMEREN CONNECTION} | 1 | EACH | \$0.00 | \$0.00 |
| | | | | | Non-Contractual Subtotal | \$0.00 |
| Addendum | | | | | | |
| 1510 | 2042010 | Settlement Gauge | 2 | EACH | | |
| | | | | | Addendum Subtotal | \$ - |
| BASE BID TOTAL | | | | | | \$ - |
| Add Alternate 01 | | | | | | |
| 1150 | 9029902 {1} | MISC. {TRAFFIC SIGNAL POWDER COATING - INTERSECTION (BLACK)} | 2 | EACH | | |
| | | | | | Add Alternate 01 Subtotal | \$ - |
| Add Alternate 02 | | | | | | |
| 1160 | 9029902 {1} | MISC. {ILLUMINATED STREET NAME SIGN} | 2 | EACH | | |
| 1170 | 9029903 {1} | MISC. {CABLE, 14 AWG 3 CONDUCTOR} | 680 | L.F. | | |
| | | | | | Add Alternate 02 Subtotal | \$ - |
| Add Alternate 03 | | | | | | |
| 1180 | 9019901 | MISC. {CONDUIT SYSTEM ON STRUCTURE (PEDESTRIAN LIGHTING)} | 1 | L.S. | | |
| | | | | | Add Alternate 03 Subtotal | \$ - |



ADDED



REPLACED




REPLACED

| Add Alternate 04 | | | | | | |
|--|-------------|---|------|------|--|------|
| 1190 | 7039901 | MISC. { TINTED CONCRETE SEALER }- PROTECTIVE COATING - PEDESTRIAN BARRIER, CONCRETE BENTS, AND PIERS (EPOXY) (TINTED) | 1 | L.S. | | |
| 1200 | 7039903 {1} | MISC. {PEDESTRIAN BARRIER (FORM LINER)} | 500 | L.F. | | |
| Add Alternate 04 Subtotal | | | | | | \$ - |
| Add Alternate 05 | | | | | | |
| 1210 | 9013003 {1} | CONDUIT, 3 IN. RIGID, IN TRENCH | 287 | L.F. | | |
| 1220 | 9013004 | CONDUIT, 4 IN. RIGID, IN TRENCH | 261 | L.F. | | |
| 1230 | 9016110 {1} | PULL BOX, PREFORMED CLASS 1 | 7 | EACH | | |
| 1240 | 9017008 | CABLE, 8 AWG 1 CONDUCTOR | 3170 | L.F. | | |
| 1250 | 9017110 {1} | CABLE, 10 AWG 1 CONDUCTOR, POLE AND BRACKET | 480 | L.F. | | |
| 1260 | 9017208 | WIRE, 8 AWG, BARE NEUTRAL | 1590 | L.F. | | |
| 1270 | 9018612 | POWER SUPPLY ASSEMBLY, TYPE 2, 240/120 VOLT SERVICE, LIGHTING ONLY | 1 | EACH | | |
| 1280 | 9019902 {1} | MISC. {LIGHT POLE AND FIXTURE} | 12 | EACH | | |
| Add Alternate 05 Subtotal | | | | | | \$ - |
| Add Alternate 06 | | | | | | |
| 1290 | 6089905 | MISC. {MEDIAN SURFACE (EXPOSED AGGREGATE FINISH)} | 897 | S.Y. | | |
| 1300 | 7039904 | MISC. {RAISED MEDIAN BARRIER (EXPOSED AGGREGATE FINISH)} | 1806 | S.F. | | |
| Add Alternate 06 Subtotal | | | | | | \$ - |
| ADD ALTERNATES (1-6) TOTAL | | | | | | \$ - |
| TOTAL (BASE BID + ADD ALTERNATES) | | | | | | \$ - |

| | | |
|------|---|----|
| WW. | Construction Requirements | 78 |
| XX. | Removal of Concrete Median | 79 |
| YY. | Ornamental Pedestrian Fence (Structures) | 80 |
| ZZ. | Pedestrian Barrier | 80 |
| AAA. | Light Pole and Fixture | 81 |
| BBB. | Form Liners | 82 |
| CCC. | Protective Coating – Concrete Bridge Deck, Bents and Piers (Epoxy) (Tinted) | 84 |
| DDD. | Epoxy Polymer Concrete Overlay | 85 |
| EEE. | Conduit System on Structure (Pedestrian Lighting) | 85 |
| FFF. | Settlement Monitoring | 86 |

3 ADDED

| | |
|---|---|
|  | <p>ACCESS ENGINEERING, LLC 11820 Tesson Ferry Road St. Louis, MO 63128 Certificate of Authority: 2000172588 Consultant Phone: 314.849.8445</p> |
| | <p>If a seal is present on this sheet, JSP's have been electronically sealed and dated.</p> |
| | <p>JOB NO. STP 4922(604) St. Louis County, MO Date Prepared: 4/16/2020</p> |
| | <p>ADDENDUM DATE: 6/22/2020</p> |
| <p>Only the following items of the Job Special Provisions (Roadway) are authenticated by this seal: A-S</p> | |

106.9.3.3 Any minor miscellaneous steel or iron items that are not included in the materials specifications shall be certified by the prime contractor as being procured domestically. Examples of these items would be bolts for sign posts, anchorage inserts, etc. The certification shall read "I certify that all steel and iron materials permanently incorporated in this project during all manufacturing processes, including coating, as being completed in the United States and in accordance with CFR Title 23 Section 635.410 Buy America Requirements procured and processed domestically in accordance with CFR Title 23 Section 635.410 Buy America Requirements. Any foreign steel used was submitted and accepted under minor usage". The certification shall be signed by an authorized representative of the prime contractor.

106.9.4 When permitted in the contract, alternate bids may be submitted for foreign steel and iron products. The award of the contract when alternate bids are permitted will be based on the lowest total bid of the contract based on furnishing domestic steel or iron products or 125 percent of the lowest total bid based on furnishing foreign steel or iron products. If foreign steel or iron products are awarded the contract, domestic steel or iron products may be used; however, payment will be at the contract unit price for foreign steel or iron products.

G. Mico-exposed Aggregate Concrete Paving

1.0 Description. This specification covers materials and construction requirements for producing and placing micro-exposed aggregate concrete including special aggregate mix and concrete surface retarder. Locations of this work is designated on the road drawings.

1.1 All materials and construction procedures shall meet MoDOT specifications and specifically the applicable requirements listed in [Sec 502](#) except as noted herein.

1.2 Qualifications: A single pre-approved Paving Contractor with a minimum of five (5) years experience on comparable project of similar size and circumstance.

2.0 Submittals

2.2 Provide a one-quart sample of each aggregate for the proposed special finish concrete.

2.2 Mockups/Design Control Samples - Provide 2'x2' panels for exposed aggregate concrete with tooled and saw cut joints, levels of exposure, and finish. Provide three (3) different depths of exposure on a set of color panels – acid etch, sandblast and up to 1/4" finish.

2.3 Mix designs for concrete including color admixture, aggregates and sands.

2.4 Product data for surface retarder and sealer.

3.0 Materials



3.1 Aggregates - Buffalo Creek Pebbles – 3/8" Missouri Pea Gravel and Limestone Sand

3.2 Concrete surface retarder - Top-Cast from W.R. Grace & Company, phone (888)336-9303. Micro Etch finishes #03 (acid etch finish), #05 (sandblast finish) and #15 (up to 1/4" exposure). Final selection to be made based upon approved Design Control Sample.

FFF. Settlement Monitoring

1.0 Description. This provision contains construction requirements for the installation of fill and monitoring of settlement.

2.0 Construction Requirements. Construction shall be in accordance with Sec 204 at locations referenced in the geotechnical report.

3.0 Method of Measurement. No measurement will be made.

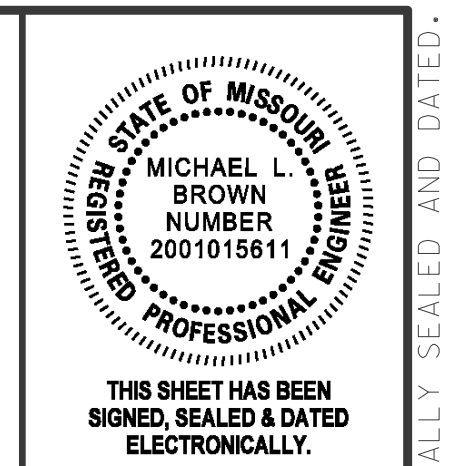
4.0 Basis of Payment. Settlement Gauges will be paid for at the contract unit price for items listed below and will be considered full compensation for all surveying, labor, equipment and material to complete the described work.

| Item No. | Unit | Description |
|-----------------|-------------|--------------------|
| 204-20.10 | each | Settlement Gauge |

3 ADDED

1. ADDITIONAL QUESTIONS RECEIVED AFTER MEETING

- a. Regarding the coatings on the bridge deck, piers caps, barrier, etc. I just wanted to confirm that there is no base bid requirement for this work and that it is all part of add alternate 04. The specs reference a bid item that is not listed so just wanted to get this clarified and make sure there was no intent for it to be incidental to another item somewhere.
 - i. A: This is addressed in Addendum 003.
- b. What are requirements for settlement gauges and how to monitor settlement?
 - i. A: This is addressed in Addendum 003.
- c. Prime is shown as an item on the 2B sheets but is not on the bid form. MoDOT no longer specs prime on their full depth asphalt paving projects. There have been problems with rain washing uncured prime off the project site and contaminating local waterways. Hoping this Item might be eliminated in Addendum 2.
 - i. A: Use plan quantities.
- d. Is the project tax exempt?
 - i. A: This is addressed in Addendum 003.
- e. Usually when a project's grading profile requires imported material (i.e. Embankment in Place) 100% of the Class A Excavation (13,444CY) is able to be converted to onsite generated fill material or Compacting Embankment (11,427 CY). It appears that a 15% shrinkage factor has been applied to the Compacting Embankment quantity (i.e. 13,444CY of excavation compacted in place to 11,427CY of fill) The shrinkage factor isn't typically applied to the Compacting Embankment quantity since the contractor handles all 13,444 CY – see MoDOT. It's been my experience that the shrinkage is handled in the Embankment In Place quantity.
 - i. A: All 13,444 CY of excavation will be used as fill. The 11,427 CY shown on the schedule is the 'in-place' quantity after swell/shrink applied. For clarification, the quantity has been adjusted to show 13,444 cy of Compacting Embankment.
- f. How do I attend the Bid Opening?
 - i. Due to COVID 19 restrictions, bid opening attendance at the office of SLEDP will be limited to one (1) person from the prime contractor submitting a bid. Contractors may request a call in number to listen to bids as read. Requests should be sent to mbrown@acceng.com by 5:00pm (CDT) Thursday June 25.



THIS SHEET HAS BEEN SIGNED, SEALED & DATED ELECTRONICALLY.

DATE PREPARED: 6/22/2020

ROUTE: 340 STATE: MO

DISTRICT: SL SHEET NO.: Q0001

COUNTY: ST LOUIS

JOB NO.:

CONTRACT ID.:

PROJECT NO. STP4922(604)

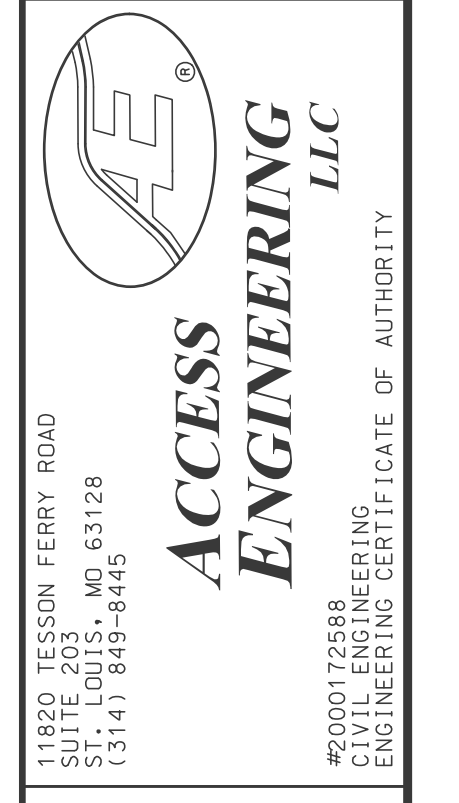
BRIDGE NO.:

| DESCRIPTION | DATE |
|----------------------------|------|
| MSD PROJECT 19MSD-00293 | |
| MSD BASEMAP 17N2+17M1+17M2 | |

MISSOURI HIGHWAYS AND TRANSPORTATION COMMISSION

105 WEST CAPITOL JEFFERSON CITY, MO 65102

1-888-ASK-MODOT (1-888-275-6636)



SUMMARY OF QUANTITIES

OLIVE/L INDBERGH

SHEET 1 OF 4

| REMOVAL OF IMPROVEMENTS | | | | | | |
|-------------------------|------------|----------|-------------|---------------|--------------------|-------------------|
| SHEET | STA TO STA | LOCATION | DESCRIPTION | QUANTITY | REMARKS | |
| 2 | 231+48 | 235+59 | RTE 340 RT | EXISTING RAMP | 418 SY | PAVEMENT REMOVAL |
| 2 | 240+00 | 241+33 | RTE 340 RT | EXISTING RAMP | 109 SY | PAVEMENT REMOVAL |
| 3 | 244+30 | 245+78 | RTE 340 RT | EXISTING RAMP | 319 SY | PAVEMENT REMOVAL |
| 3 | 249+78 | 254+55 | RTE 340 RT | EXISTING RAMP | 456 SY | PAVEMENT REMOVAL |
| 2 | 0+92 | 7+45 | RAMP A | EXISTING RAMP | 1713 SY | PAVEMENT REMOVAL |
| 3 | 0+00 | 6+22 | RAMP B | EXISTING RAMP | 1620 SY | PAVEMENT REMOVAL |
| 3 | 2+86 | 3+74 | RAMP C | EXISTING RAMP | 212 SY | PAVEMENT REMOVAL |
| 3 | 0+84 | 3+39 | RAMP C | EXISTING RAMP | 594 SY | PAVEMENT REMOVAL |
| 2 | 3+04 | 4+56 | RAMP D | EXISTING RAMP | 406 SY | PAVEMENT REMOVAL |
| 2 | 3+89 | 7+55 | RAMP D | EXISTING RAMP | 971 SY | PAVEMENT REMOVAL |
| 2 | 5+07 | 6+27 | RAMP D | EXISTING RAMP | 243 LF | GUARDRAIL REMOVAL |
| 2 | 5+21 | 8+08 | RAMP D | EXISTING RAMP | 648 LF | GUARDRAIL REMOVAL |
| 3 | 9+00 | 10+52 | RAMP E | EXISTING RAMP | 274 SY | PAVEMENT REMOVAL |
| 3 | 10+12 | 14+00 | RAMP E | EXISTING RAMP | 785 SY | PAVEMENT REMOVAL |
| 2 | 2+03 | 10+85 | RAMP F | EXISTING RAMP | 877 LF | GUARDRAIL REMOVAL |
| 2 | 4+90 | 6+07 | RAMP F | EXISTING RAMP | 238 SY | PAVEMENT REMOVAL |
| 2 | 3+52 | 5+43 | RAMP F | EXISTING RAMP | 326 SY | PAVEMENT REMOVAL |
| | | | | | TOTAL = 1 LUMP SUM | |

* INCLUDES ALL SAWCUTS, SIGNAGE, SIGN STRUCTURES, CULVERTS, INLETS, DRAINAGE STRUCTURES, AND OTHER NECESSARY REMOVALS FOR PROJECT CONSTRUCTION.

| MOBILIZATION |
|--------------------|
| TOTAL = 1 LUMP SUM |

| CONTRACTOR FURNISHED SURVEYING AND STAKING |
|--|
| TOTAL = 1 LUMP SUM |

| ROCK BLANKET | | | | | | | |
|--------------|------------|----------|-----------|------------|---------|---------|-----|
| SHEET | STA TO STA | LOCATION | DEPTH | FURNISHING | PLACING | REMARKS | |
| | | | | TYPE 1 | TYPE 1 | | |
| | | | FT | VOLUME | VOLUME | | |
| | | | | CU YD | CU YD | | |
| 2 | 6+16.00 | 7+47.00 | WEST CONN | LT | 2 | 245 | 245 |
| 2 | 241+25 | 241+25 | OLIVE | LT/RT | 2 | 44 | 44 |
| 3 | 244+32 | 244+32 | OLIVE | LT/RT | 2 | 44 | 44 |
| 3 | 245+10 | 245+10 | OLIVE | RT | 2 | 22 | 22 |
| TOTAL | | | | | 356 | 356 | |

| TURF REINFORCEMENT MAT | | | | | |
|------------------------|------------|----------|------------|-------------------------|-------|
| SHEET | STA TO STA | LOCATION | AREA | EROSION CONTROL BLANKET | |
| | | | | SQ FT | SQ YD |
| 2 | 219+50 | 222+00 | RTE 340 RT | 2500 | 278 |
| 3 | 240+25 | 241+25 | RTE 340 LT | 1200 | 133 |
| TOTAL | | | | 411 | |

| GUARDRAIL | | | | | | | | |
|-----------|------------|-----------|-------------------|--------|------------|--------|-------------|---------|
| SHEET | STA TO STA | LOCATION | MGS | MGS | TRANSITION | BRIDGE | CRASHWORTHY | |
| | | | GUARDRAIL | END | | | | SECTION |
| | | | LONG POST | ANCHOR | EA | EA | EA | |
| | | | LF | EA | EA | EA | EA | |
| 2 | 5+13.00 | 10+85.00 | WEST CONN | LT | 525.00 | 1 | 1 | 1 |
| 2 | 2+00.00 | 4+37.00 | RAMP D/ WEST CONN | RT | 187.50 | 1 | 1 | 1 |
| 2 | 240+82.00 | 241+32.00 | OLIVE | RT | 0.00 | 1 | 1 | 1 |
| 3 | 244+30.48 | 244+80.48 | OLIVE | LT | 0.00 | 1 | 1 | 1 |
| TOTALS | | | 712.5 | 2 | 2 | 2 | 4 | |

| BARRIER | | | | | | |
|---------|------------|----------|-----------|---------|-------|------|
| SHEET | STA TO STA | LOCATION | TYPE C | TYPE A | | |
| | | | BARRIER | BARRIER | | |
| | | | LF | LF | | |
| 2 | 4+42.50 | 7+60.00 | WEST CONN | CL | 318.0 | |
| 2 | 7+60.00 | 7+80.00 | WEST CONN | CL | | 20.0 |
| 3 | 7+96.00 | 11+06.00 | EAST CONN | CL | 310.0 | |
| TOTALS | | | 628.0 | 20.0 | | |

| EARTHWORK | | | | |
|---------------------|------------|------------|------------|-------------------------------|
| LOCATION | CLASS A | EMBANKMENT | COMPACTING | REMARKS |
| | EXCAVATION | IN PLACE | EMBANKMENT | |
| | CU YD | CU YD | CU YD | STA |
| RTE 340 | 3089 | 149 | 2626 | 50.0 |
| RAMP WEST | 1517 | 5340 | 4116 | |
| RAMP EAST | 544 | 2454 | 462 | 0.0 |
| RAMP WEST DETENTION | 3257 | 852 | 2769 | 0.0 |
| RAMP EAST DETENTION | 5036 | 0 | 1454 | 2826 CU YD MOVED TO RAMP WEST |
| TOTAL | 13444 | 8795 | 11427 | 50.0 |

| COMPACTING EMBANKMENT CU YD |
|-----------------------------|
| 3089 |
| 1517 |
| 544 |
| 3257 |
| 5036 |
| 13444 |

3 REVISED

| TEMPORARY EROSION CONTROL | | | | | | | | | | |
|---------------------------|------------|----------|------------------|-------|----------|------------|------------|---------|------------------|------------------|
| SHEET | STA TO STA | LOCATION | SEDIMENT | SILT | SEDIMENT | CURB INLET | ROCK DITCH | REMARKS | | |
| | | | REMOVAL | FENCE | TRAP | CHECK | CHECK | | | |
| | | | CU YD | LF | CU YD | EA | LF | | | |
| 1 | 218+65 | 229+00 | RTE 340 | RT | 38 | | 2 | 171 | | |
| 1 | 218+65 | 228+60 | RTE 340 | RT | 11 | 1018 | | | | |
| 2 | 229+00 | 243+00 | RTE 340 | LT/RT | 47 | | 8 | 207 | 2 EX. AREA INLET | |
| 2 | 229+30 | 239+99 | RTE 340 (RAMP F) | RT | 13 | 1271 | | | | |
| 2 | 233+56 | 242+38 | RTE 340 (RAMP D) | LT | 14 | 1312 | | | | |
| 2 | 238+13 | 239+38 | RTE 340 | RT | 4 | 366 | | | | |
| 2 | 239+45 | 242+35 | RTE 340 (RAMP A) | LT | 9 | 848 | | | | |
| 2 | 3+04 | 4+45 | WEST CONN | LT | 4 | 316 | | | | |
| 2 | 239+46 | 241+57 | RTE 340 | RT | 7 | 602 | | | | |
| 3 | 243+00 | 257+00 | RTE 340 | LT/RT | 45 | | 4.7 | 14 | 133 | 1 EX. AREA INLET |
| 3 | 243+21 | 254+96 | RTE 340 | LT | 17 | 1622 | | | | |
| 3 | 243+26 | 245+70 | RTE 340 (RAMP B) | LT | 7 | 691 | | | | |
| 3 | 243+54 | 245+21 | RTE 340 | RT | 5 | 430 | | | | |
| 3 | 0+12 | 5+56 | RAMP C | LT | 6 | 592 | | | | |
| 3 | 7+00 | 8+40 | RAMP E | LT | 2 | 147 | | | | |
| 3 | 7+00 | 257+00 | RAMP E (RTE 340) | RT | 13 | 1278 | | | | |
| 4 | 257+00 | 29+15 | RTE 340 | RT | 36 | | 4.7 | 10 | 64 | |
| 4 | 257+00 | 281+63 | RTE 340 | RT | 5 | 466 | | | | |
| 4 | 263+15 | 29+15 | RTE 340 | RT | 8 | 768 | | | | |
| 5 | 4+81 | 7+00 | RAMP E | LT | 3 | 220 | | | | |
| 5 | 4+81 | 7+00 | RAMP E | RT | 3 | 220 | | | | |
| 5 | 10+20 | 10+83 | RAMP F | RT | 1 | 63 | | | | |
| TOTALS | | | 298 | 12230 | 18.7 | 34 | 575 | | | |

| CULVERT CLEANOUT | | | | | | | |
|------------------|---------|-----------|----------|------|--------|----------|----------|
| SHEET | STATION | LOCATION | MATERIAL | SIZE | LENGTH | CULVERT | |
| | | | | IN | FT | CLEANOUT | |
| | | | | | | EA | |
| 1 | 220+50 | OLIVE | RCP | 36 | 100 | 1 | EXISTING |
| 1 | 227+18 | OLIVE | RCP | 30 | 127 | 1 | EXISTING |
| 1 | 227+50 | OLIVE | RCP | 18 | 154 | 1 | EXISTING |
| 1 | 228+50 | OLIVE | RCP | 30 | 154 | 1 | EXISTING |
| 2 | 229+50 | OLIVE | RCP | 15 | 34 | 1 | EXISTING |
| 2 | 234+95 | OLIVE | RCP | 30 | 227 | 1 | EXISTING |
| 2 | 241+00 | OLIVE | RCP | 30 | 253 | 1 | EXISTING |
| 2 | 1+71 | WEST CONN | RCP | 15 | 88 | 1 | EXISTING |
| 2 | 5+71 | WEST CONN | RCP | 12 | 166 | 1 | EXISTING |
| 3 | 254+50 | OLIVE | RCP | 15 | 100 | 1 | EXISTING |
| 3 | 1+50 | RAMP B | RCP | 12 | 65 | 1 | EXISTING |
| 3 | 5+00 | RAMP B | RCP | 18 | 123 | 1 | EXISTING |
| 3 | 7+00 | RAMP C | RCP | 12 | 52 | 1 | EXISTING |
| 3 | 7+50 | RAMP C | RCP | 15 | 55 | 1 | EXISTING |
| 4 | 262+50 | OLIVE | RCP | 12 | 154 | 1 | EXISTING |
| 5 | 2+12 | RAMP E | RCP | 18 | 84 | 1 | EXISTING |
| TOTAL | | | | | | 16 | |

IF A SEAL IS PRESENT ON THIS SHEET IT HAS BEEN ELECTRONICALLY SEALED AND DATED.