

# **Data-Driven Safety Training**

## **Freeway Segment Safety Analysis**

Carlos Sun, Praveen Edara, Yaw Adu-Gyamfi

University of Missouri

Missouri Center for Transportation Innovation

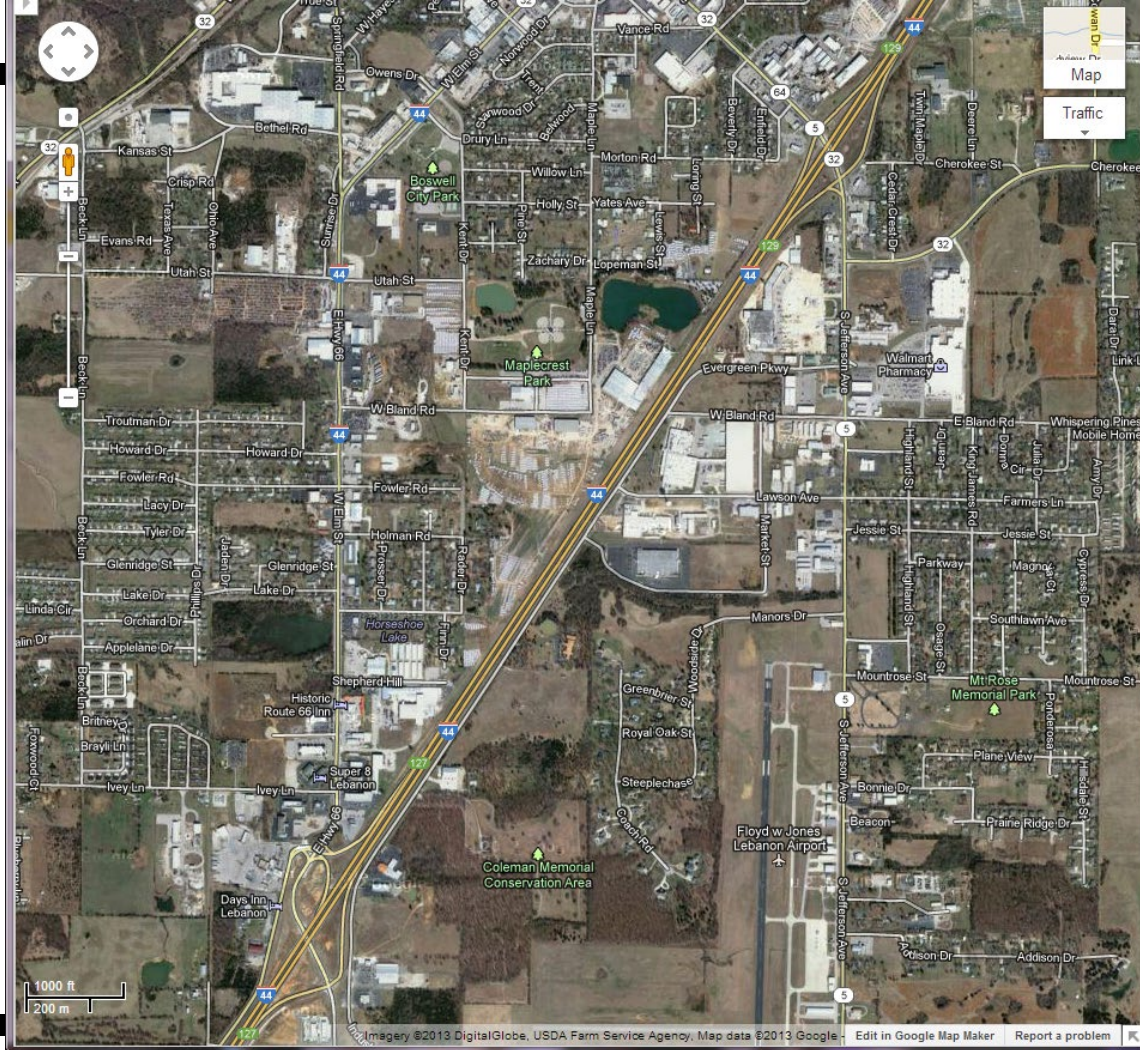
---

# Outline

- 1 Safety analysis methodology and segmentation
- 2 Data requirements
- 3 Laclede I-44 example**
- 4 Laclede I-44 solution

# Laclede I-44 Exercise

- City of Lebanon, Laclede County
- I-44 (EB increasing MM, WB decreasing MM)
- Mile marker (MM) 127.71 to 128.82
- Length = 1.1 mile
- Analyze fatal+injury (FI) crashes only



# Crash Period vs. Study Period

- Study period is the period of interest
- Crash data could be from a different period

# Laclede I-44 Exercise Data

- No Horizontal curves
- Lane width 12 ft
- Outside shoulder width 8 ft
- Inside shoulder width 4 ft
- Median width 40 ft
- Rumble strip on both inside and outside shoulders
  - outside - full length both directions
  - inside – full EB, 1 mi WB

# Laclede I-44 Exercise Data

- Median barrier
  - full length of segment
  - average distance to median from edge of travelway 19.25 ft
  - width 1.5 ft
- Clear zone width 20 ft
- Some roadside barrier
  - 0.11 of 1.1 mi = 0.121

# Laclede I-44 Exercise Data

## Ramps

- EB/increasing MM
  - 0.329 to upstream entrance
  - 0.049 to downstream exit
- WB/decreasing MM
  - 0.123 to upstream entrance
  - 0.133 to downstream exit



# Laclede I-44 Exercise Data

## Traffic

- Freeways mainline
  - 2012 32,930
  - 2013 27,497
  - 2014 29,221

# Laclede I-44 Exercise Data

## Traffic EB/increasing

- Entrance ramp
  - 2012 1456
  - 2013 1455
  - 2014 1482
- Exit ramp
  - 2012 3060
  - 2013 3060
  - 2014 3107

# Laclede I-44 Exercise Data

Traffic WB/decreasing

- Entrance ramp
  - 2012 3325
  - 2013 2645
  - 2014 2009
- Exit ramp
  - 2012 1518
  - 2013 1518
  - 2014 1544

# Laclede I-44 Exercise Data

- Observed FI crashes
- 2012-2014
- MV 1
- SV 1

# ISATe

- Enhanced Interchange Safety Analysis Tool
- Spreadsheet for all freeway facilities
  - appropriate for segments, speed change lanes, ramps, and terminals

# Laclede I-44 Exercise

## Learning recommendation

- Given data collected for Laclede I-44 site, attempt the modeling on your own first with ISATe
  - Fill in cyan/light blue cells in “Input Freeway Segments”
  - Click “Perform Calculations” in “Main”
- Review the modeling performed by the instructor
- Compare and note any differences