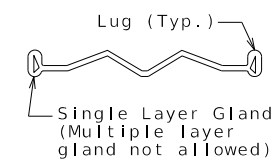
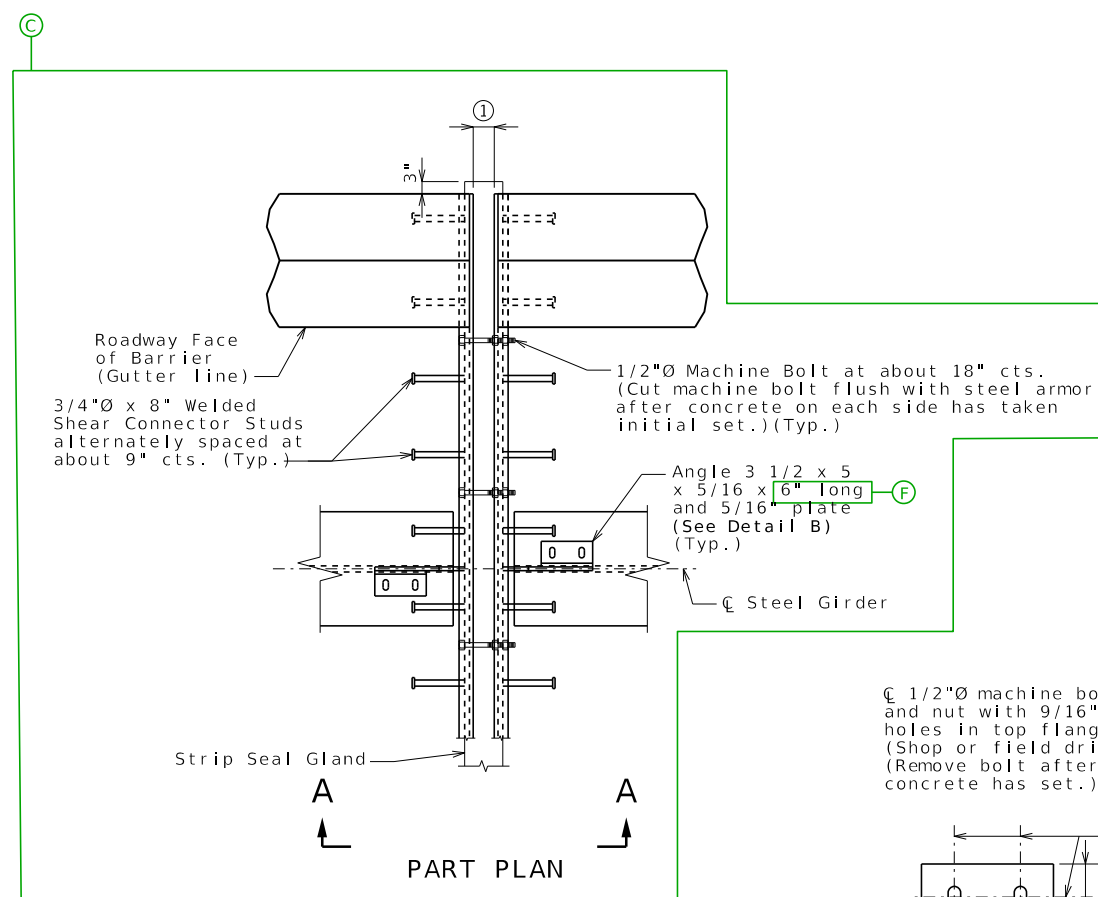
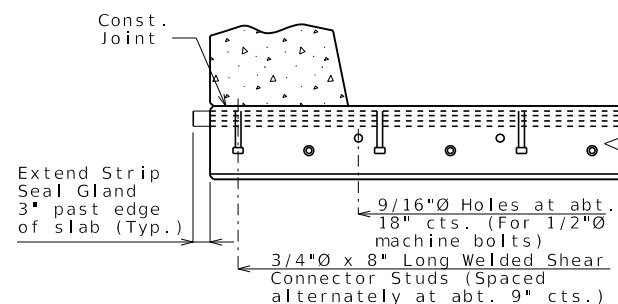
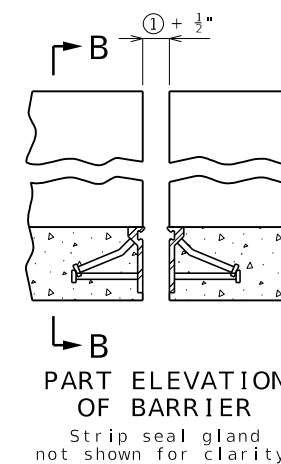


SECTION A-A

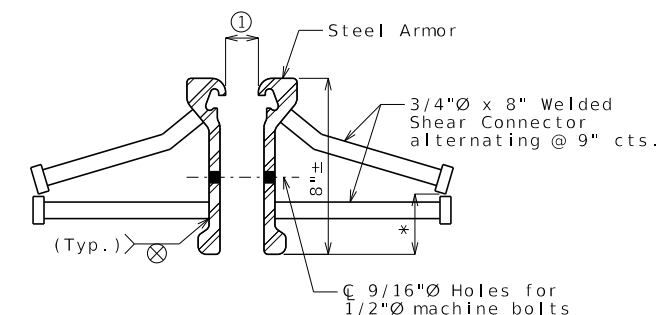
Strip seal gland not shown for clarity.



### DETAIL OF GLAND



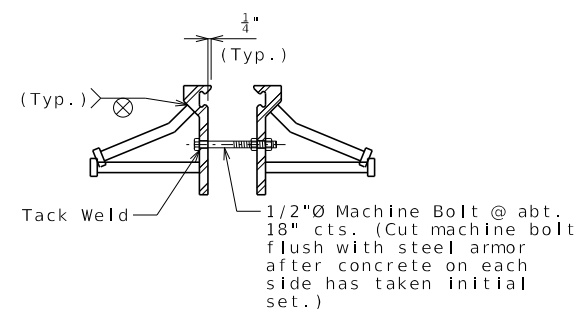
PART SECTION B-B



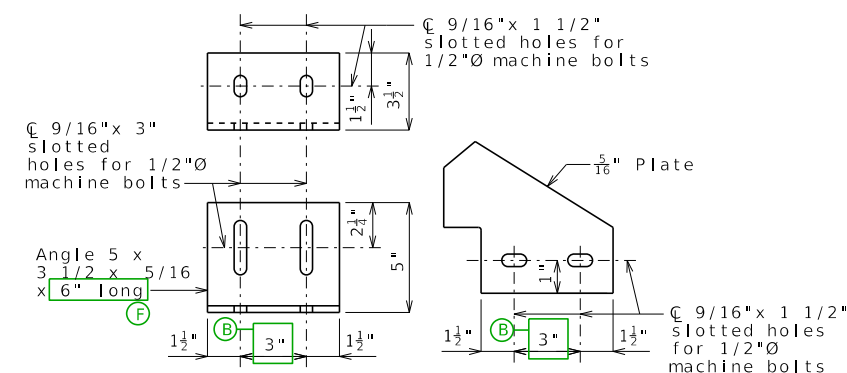
### DETAIL OF JOINT ARMOR

\* Bend stud in shop to maintain 1" min. from bottom of steel armor.

Table of Allowed Transverse Strip Seal Expansion Joint System									
Manufacturer	Strip Seal System (Designated Name)	Movement Parallel to RDWY	Allowed Installation Gap, ① Normal to Joint at RDWY Surface @ Air/Surface Temperature ②						③
			@ 40°F	@ 50°F	@ 60°F	@ 70°F	@ 80°F	@ 90°F	
D S Brown	Strip seal L2-400	XXX	XXX	XXX	XXX	XXX	XXX	XXX	<input type="checkbox"/>
D S Brown	Strip seal L2-500	XXX	XXX	XXX	XXX	XXX	XXX	XXX	<input type="checkbox"/>
Watson Bowman Acme (Wabo)	Strip seal SE-300	XXX	XXX	XXX	XXX	XXX	XXX	XXX	<input type="checkbox"/>
Watson Bowman Acme (Wabo)	Strip seal SE-400	XXX	XXX	XXX	XXX	XXX	XXX	XXX	<input type="checkbox"/>
Watson Bowman Acme (Wabo)	Strip seal SE-500	XXX	XXX	XXX	XXX	XXX	XXX	XXX	<input type="checkbox"/>



DETAIL A




STRIP SEAL EXPANSION JOINT SYSTEM AT INTERMEDIATE BENT NO.

Note: This drawing is not to scale. Follow dimensions.

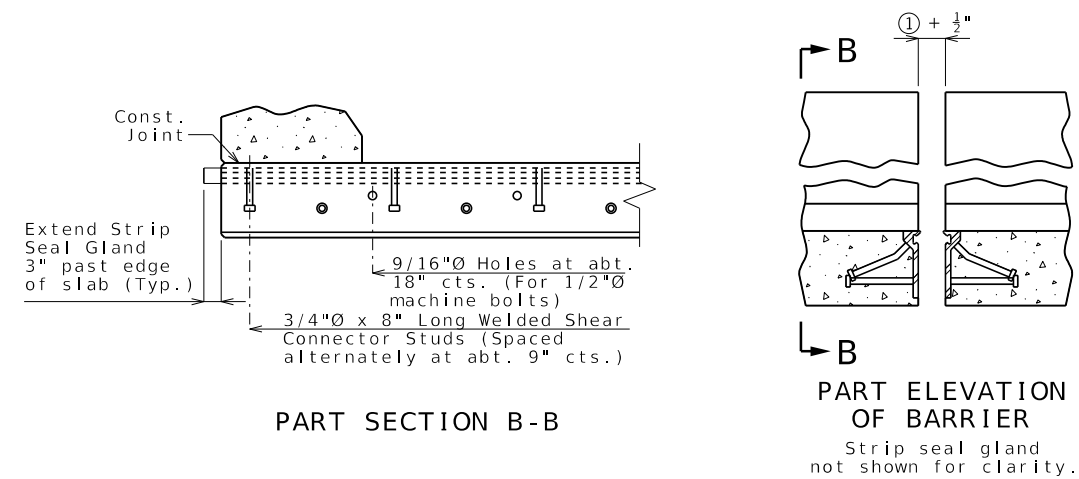
Sheet No. of

Detailed  
Checked

DATE PREPARED 2/5/2026	
ROUTE	STATE MO
DISTRICT	SHEET NO. 4
COUNTY	
JOB NO.	
CONTRACT ID.	
PROJECT NO.	
BRIDGE NO.	
DATE	DESCRIPTION
 MISSOURI HIGHWAYS AND TRANSPORTATION COMMISSION	
105 WEST CAPITAL JEFFERSON CITY, MO 65102	

STRIP04\_stl\_int      Guidance & Alternate Details

- Standard Drawing Guidance (do not show on plans):
- Modify drawing as necessary.
- Remove non-applicable rows in table.
- Ⓐ Dimension to clear bearing stiffener (1 1/2" Min.). For rehab bridge, dimension should be based on shop drawing or field check.
- Ⓑ Use 3". For rehab bridge, dimension should be based on shop drawing or field check.
- Ⓒ Use squared, left advanced or right advanced Part Plan as needed.
- Ⓓ = 3/4" (Min.) @ 60° Verify only. Do not show on plans.
- Ⓔ = Ⓐ @ 60° + 1/2" + 3/4" (Min.). Verify only. Do not shown on plans.
- Ⓕ = Use 6" long angle. For rehab bridge, modify angle length based on shop drawing or field check.
- Ⓖ Delete precast panel for CIP slab.



Alternate details  
for Type B barrier (SBC)

