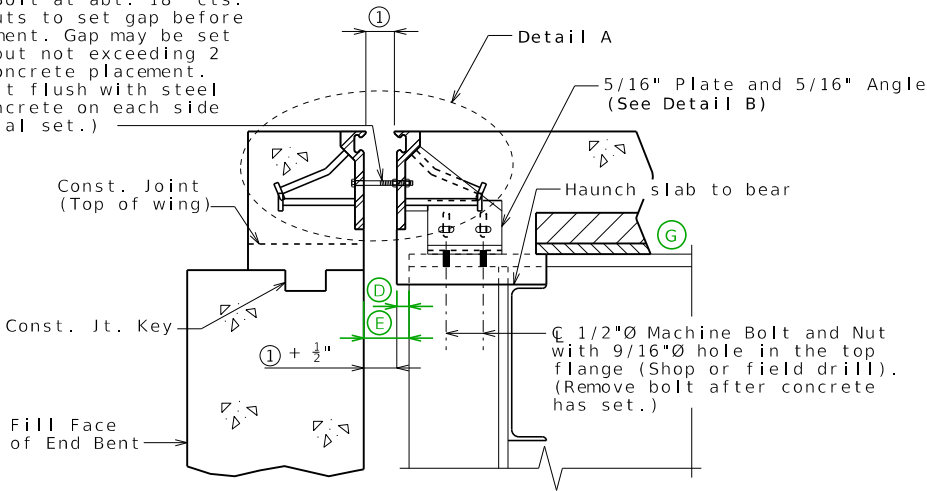
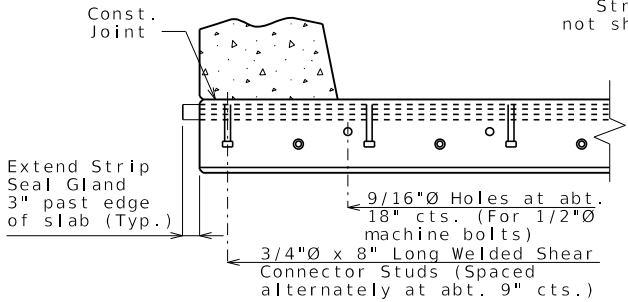
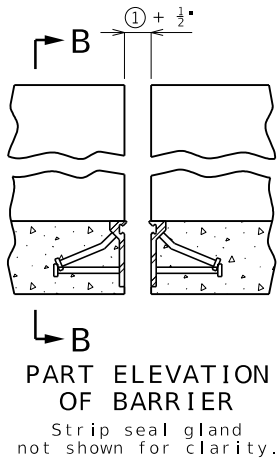
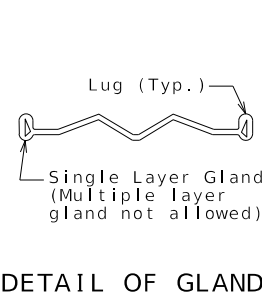


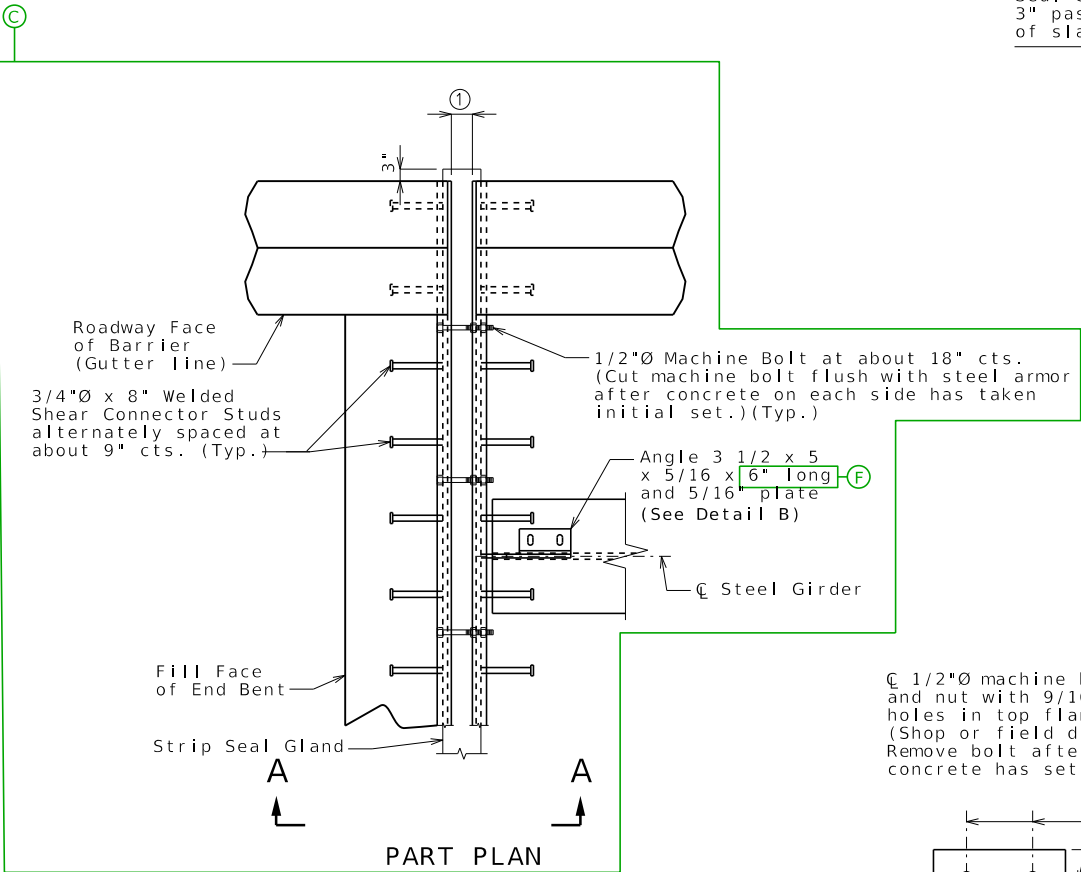
1/2"Ø Machine Bolt at abt. 18" cts.  
(Use two hex nuts to set gap before  
concrete placement. Gap may be set  
anytime up to but not exceeding 2  
hours before concrete placement.  
Cut machine bolt flush with steel  
armor after concrete on each side  
has taken initial set.)



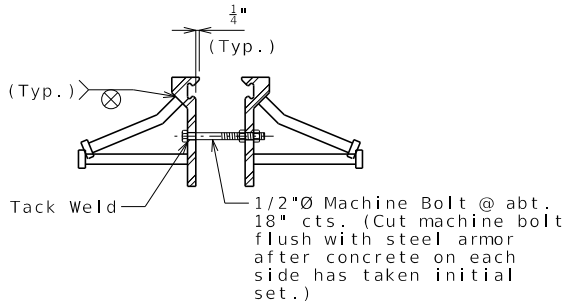
SECTION A-A  
Strip seal gland not shown for clarity.



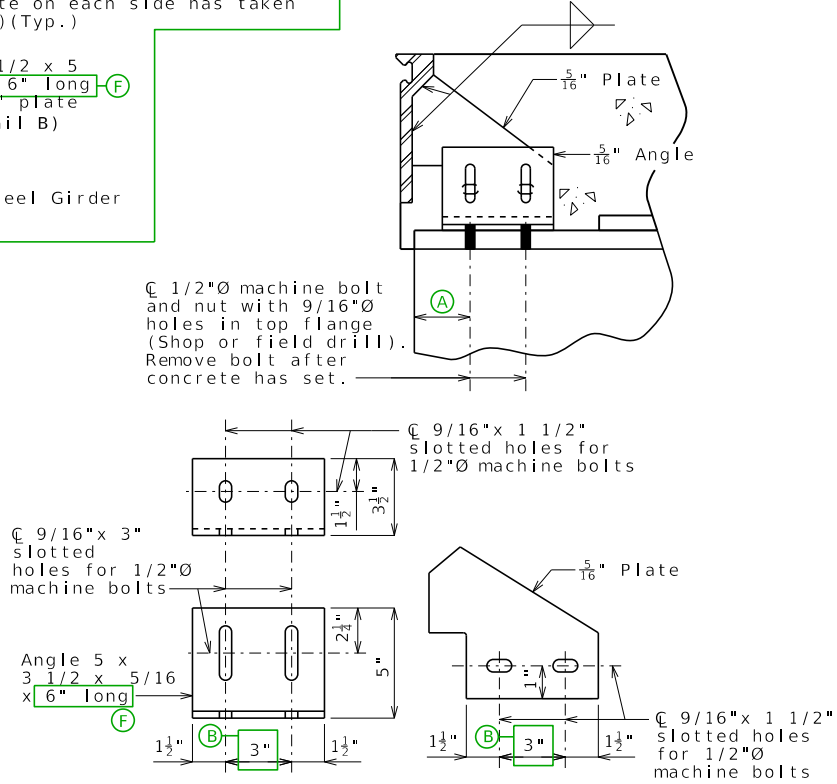
PART SECTION B-B



PART PLAN



DETAIL A



DETAIL B

GENERAL NOTES:

Expansion joint system shall be fabricated in one section, except for staged construction and when the length is over 50 feet. A complete joint penetration groove welded splice shall be required. Welds shall be ground flush to provide a smooth surface. The expansion joint system shall be fabricated and installed to the crown and grade of the roadway.

The strip seal gland shall be installed in joints in one continuous piece without field splices. Factory splicing will be permitted for joints in excess of 53 feet.

Structural steel for the expansion joint system shall be ASTM A709 Grade 36 except the steel armor may be ASTM A709 Grade 50W. Anchors for the expansion joint system shall be in accordance with Sec 1037. Strip seal expansion joint system shall be in accordance with Sec 717.

Structural steel for the expansion joint system shall be coated with a minimum of two coats of inorganic zinc primer to provide a total dry film thickness of 4 mils minimum, 6 mils maximum, or galvanized in accordance with ASTM A123. Anchors need not be protected from overspray.

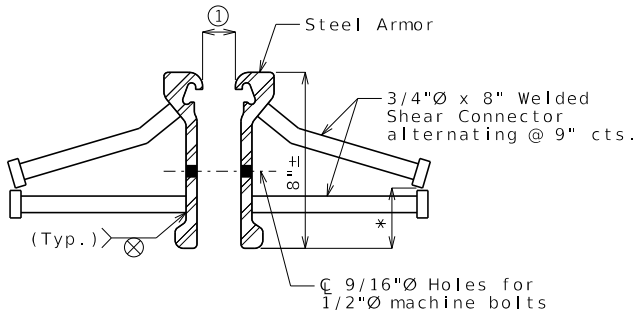
Longitudinal reinforcing steel shall be placed so that ends shall be 1" from the vertical leg of the steel armor at the expansion joint system.

Concrete shall be forced under and around steel armor and anchors. Proper consolidation of the concrete shall be achieved by localized internal vibration.

② The installation temperature shall be taken as the actual air temperature averaged over the 24-hour period immediately preceding installation.

③ MoDOT Construction personnel will indicate the strip seal expansion joint system installed.

Steel armor may also be referred to as extrusion or rail.



DETAIL OF JOINT ARMOR

\* Bend stud in shop to maintain 1" min. from bottom of steel armor.

Table of Allowed Transverse Strip Seal Expansion Joint System

Table of Allowed Transverse Strip Seal Expansion Joint System									
Manufacturer	Strip Seal System (Designated Name)	Movement Parallel to RDWY	Allowed Installation Gap						③
			① Normal to Joint at RDWY Surface @ Air/Surface Temperature ②						
			@ 40°F	@ 50°F	@ 60°F	@ 70°F	@ 80°F	@ 90°F	
D S Brown	Strip seal L2-400	XXX	XXX	XXX	XXX	XXX	XXX	XXX	□
D S Brown	Strip seal L2-500	XXX	XXX	XXX	XXX	XXX	XXX	XXX	□
Watson Bowman Acme (Wabo)	Strip seal SE-300	XXX	XXX	XXX	XXX	XXX	XXX	XXX	□
Watson Bowman Acme (Wabo)	Strip seal SE-400	XXX	XXX	XXX	XXX	XXX	XXX	XXX	□
Watson Bowman Acme (Wabo)	Strip seal SE-500	XXX	XXX	XXX	XXX	XXX	XXX	XXX	□

STRIP SEAL EXPANSION JOINT SYSTEM AT END BENT NO. \_

Detailed  
Checked

Note: This drawing is not to scale. Follow dimensions.

Sheet No. of

DESCRIPTION

DATE

MISSOURI HIGHWAYS AND TRANSPORTATION COMMISSION

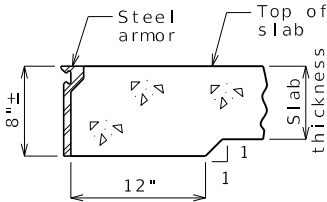


105 WEST CAPITOL  
JEFFERSON CITY, MO 65102  
1-888-ASK-MODOT (1-888-275-6636)

STRIP03\_stl\_end      Guidance & Alternate Details

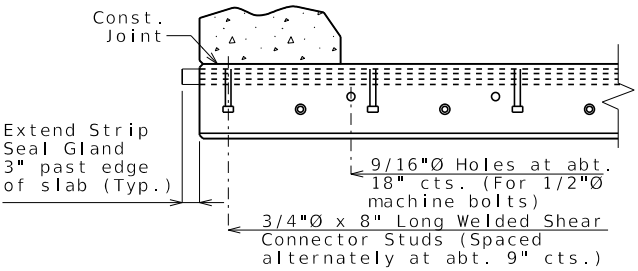
Standard Drawing Guidance (do not show on plans):  
Modify drawing as necessary.  
Remove non-applicable rows in table.

- Ⓐ Dimension to clear bearing stiffener (1 1/2" Min.). For rehab bridge, dimension should be based on shop drawing or field check.
- Ⓑ Use 3". For rehab bridge, dimension should be based on shop drawing or field check.
- Ⓒ Use squared, left advanced or right advanced Part Plan as needed.
- Ⓓ = 3/4" (Min.) @ 60° Verify only. Do not show on plans.
- Ⓔ = Ⓐ @ 60° + 1/2" + 3/4" (Min.). Verify only. Do not show on plans.
- Ⓕ = Use 6" long angle. For rehab bridge, modify angle length based on shop drawing or field check.
- Ⓖ Delete precast panel for CIP slab.

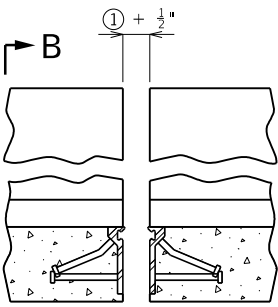


PART SECTION THRU  
EXPANSION JOINT IN  
SLAB CANTILEVER

Include this detail on redecks & rehabs when slab thickness is less than 8".  
If slab thickness + haunch to bear is less than 8" within the girder bays, a shorter armor may be used.

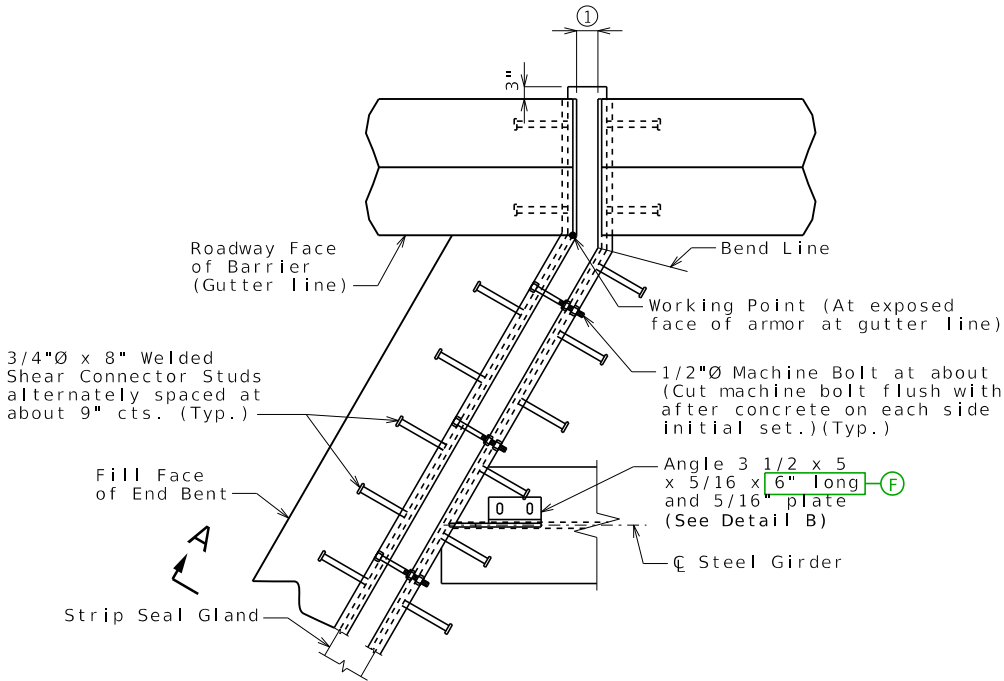


PART SECTION B-B

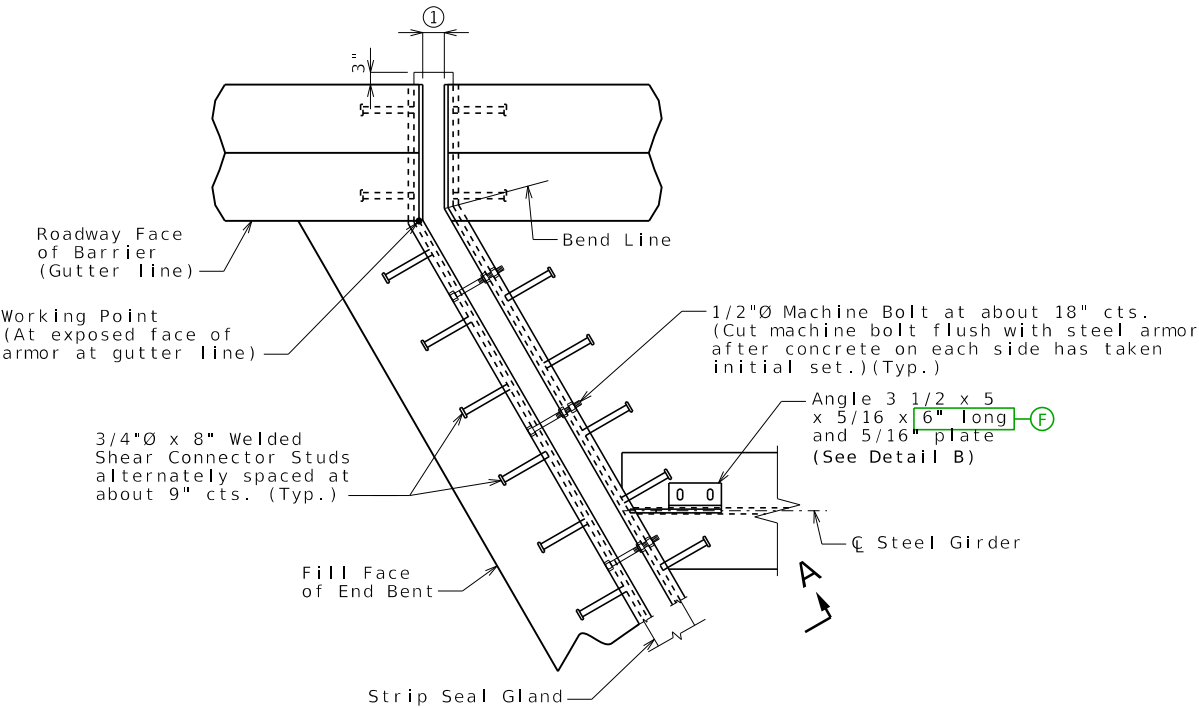


PART ELEVATION  
OF BARRIER  
Strip seal gland  
not shown for clarity.

Alternate details  
for Type B barrier (SBC)



PART PLAN  
Left Advanced



PART PLAN  
Right Advanced