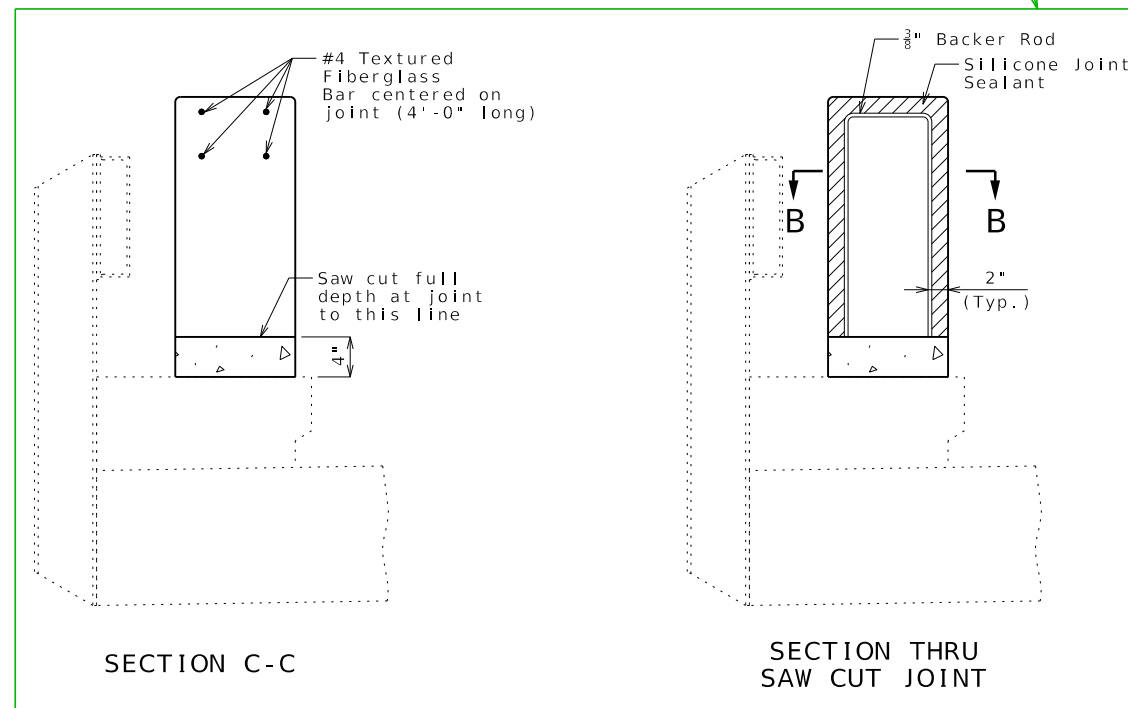
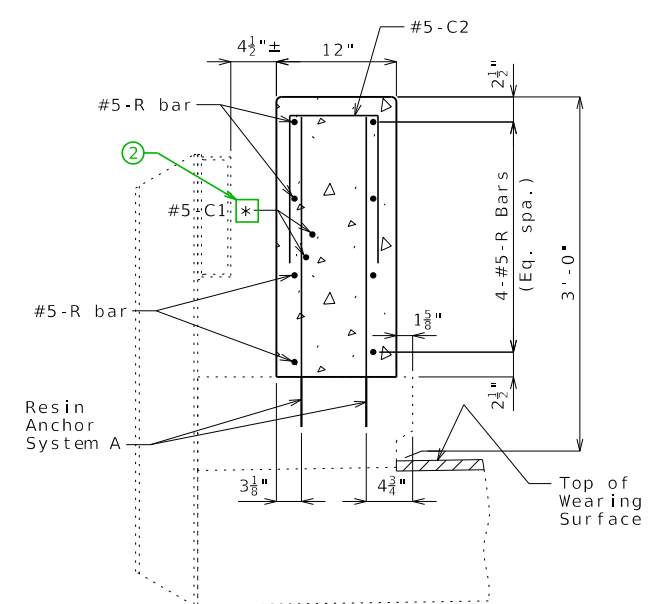


TYPICAL ELEVATION OF CURB BLOCKOUT AT SUPPORT LOCATIONS

Horizontal R bars and rail attachment holes not shown for clarity. C bars and textured fiberglass bars shall be used in addition to reinforcement shown for conventional forming.



Standard Drawing Guidance (Do not show on plans):

- ① Optional construction joint 1 1/2" (min.) past end of the 7-#5-R bars.
- ② Omit for single span bridges.

Notes:

** When optional construction joint is used, #5-C1 bars may be shifted or omitted.

Work this sheet with Sheets No. _ & _.

② Joint sealant and backer rods shall be in accordance with Sec 717 for silicone joint sealant for saw cut and formed joints.

For slip-formed option, both sides of the curb blockout shall have a vertically broomed finish and the top shall have a transversely broomed finish.

② Cost of silicone joint sealant and backer rod, complete in place, will be considered completely covered by the contract unit price for Curb Blockout.

General notes shown for conventionally formed curb blockouts also apply to slip-formed curb blockouts.

Channel, posts and concrete end posts shall be removed if necessary for slip forming. Removal cost will be considered completely covered by the contract unit price for Curb Blockout.

* Each side of joint location.

Note: C2 bars spaced with resin anchor systems in roadway face of 12" wide curb blockout.

OPTIONAL SLIP-FORMED CURB BLOCKOUT

Detailed Checked

Note: This drawing is not to scale. Follow dimensions.

Sheet No. of

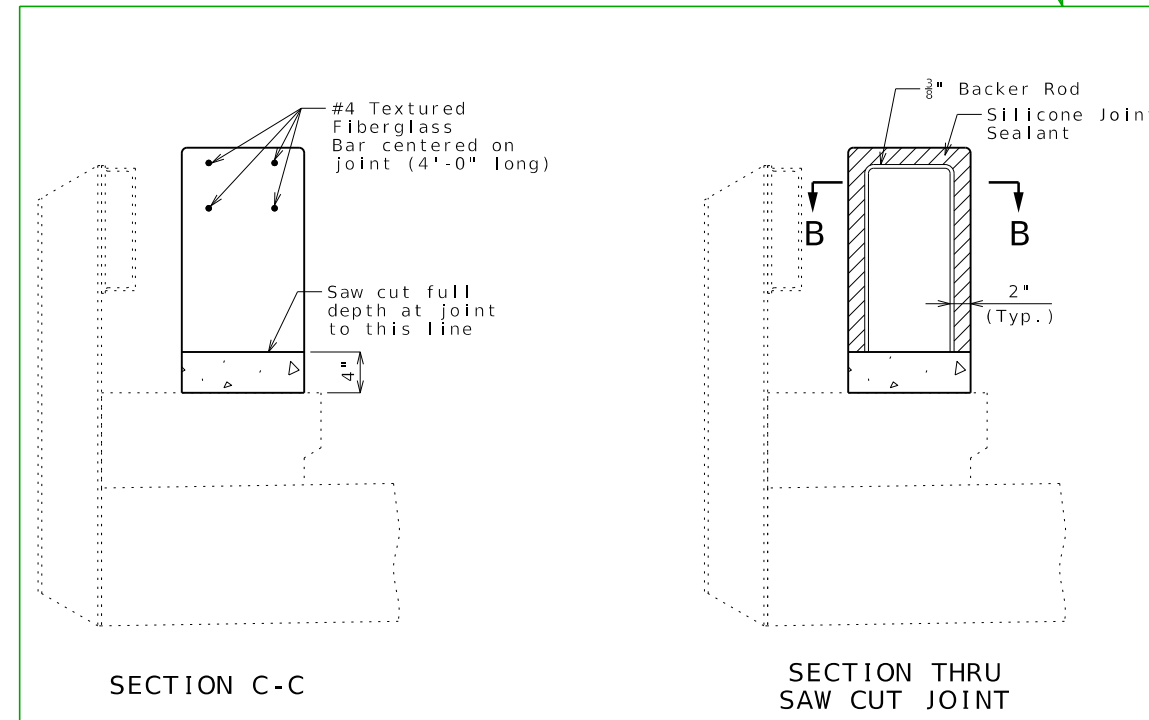
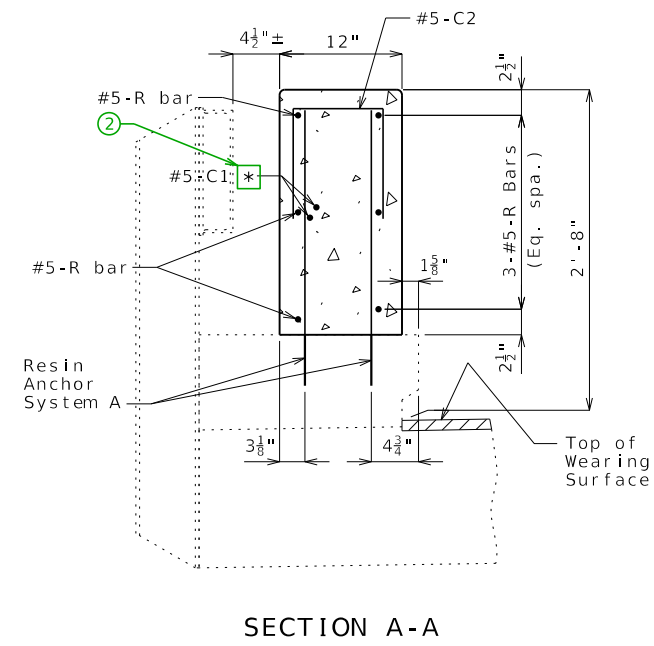
DATE PREPARED		8/22/2024	
ROUTE	STATE	MO	
DISTRICT	SHEET NO.	7	
COUNTY			

JOB NO.
CONTRACT ID.
PROJECT NO.
BRIDGE NO.

DESCRIPTION	DATE

MISSOURI HIGHWAYS AND TRANSPORTATION COMMISSION

105 WEST CAPITOL JEFFERSON CITY, MO 65102
1-888-ASK-MODOT (1-888-275-6636)



Guidance: Remove top slopes from ends in Elevation for 2'-8" blockout.

Alternate details for 2'-8" blockout