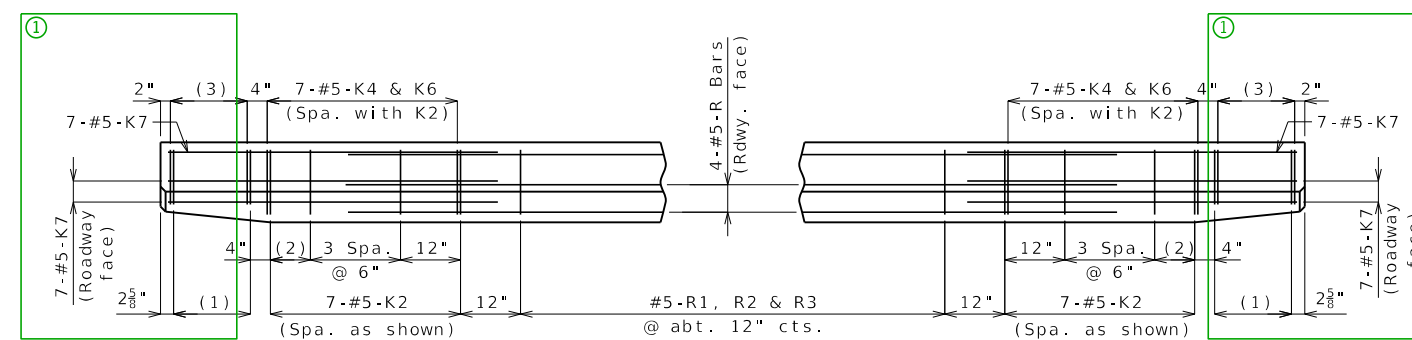
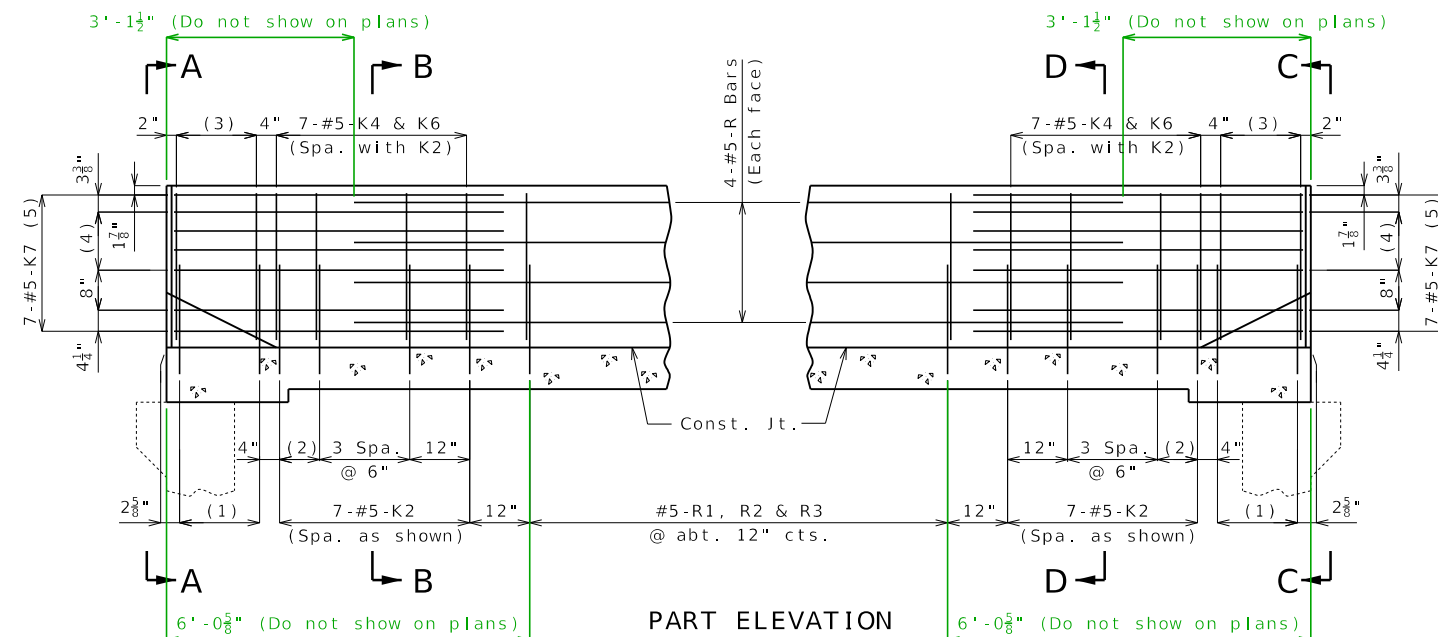


DETAILS OF GUARD RAIL ATTACHMENT



Standard Drawing Guidance: (Do not show on plans)

① Show part of existing end bent.

General Notes:

Concrete traffic barrier delineators shall be placed on top of the barrier as shown on Missouri Standard Plan 617.10 and in accordance with Sec 617. Delineators on bridges with two-lane, two-way traffic shall have retroreflective sheeting on both sides. Concrete traffic barrier delineators will be considered completely covered by the contract unit price for Type H Barrier.

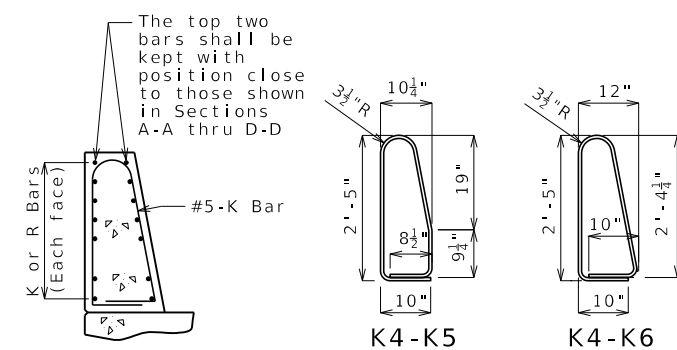
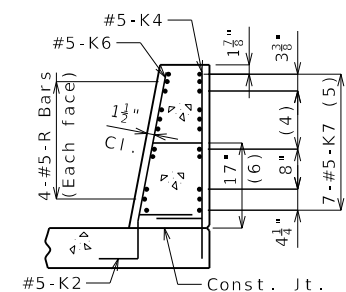
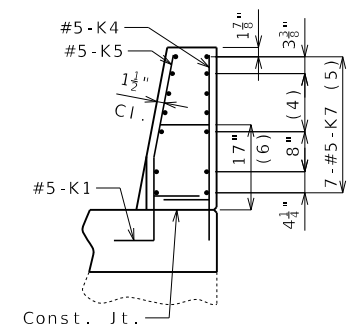
Reinforcing Steel:

Minimum clearance to reinforcing steel shall be 1 1/2".

Use a minimum lap of 2'-6" between K7 bars and R bars.

TYPE H BARRIER AT END BENTS

(Left barrier shown, right barrier similar)



PERMISSIBLE ALTERNATE SHAPES

(Other K bars not shown for clarity)

The K4-K5 and K4-K6 bar combination may be furnished as one bar as shown, at the contractor's option.

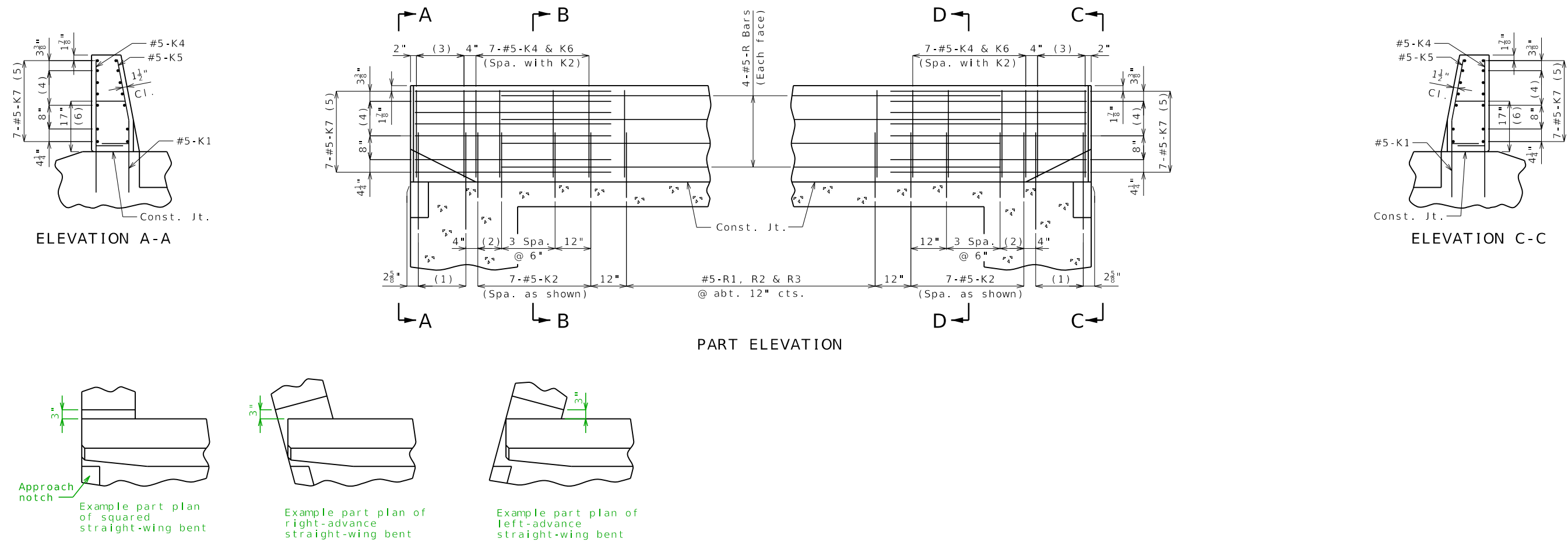
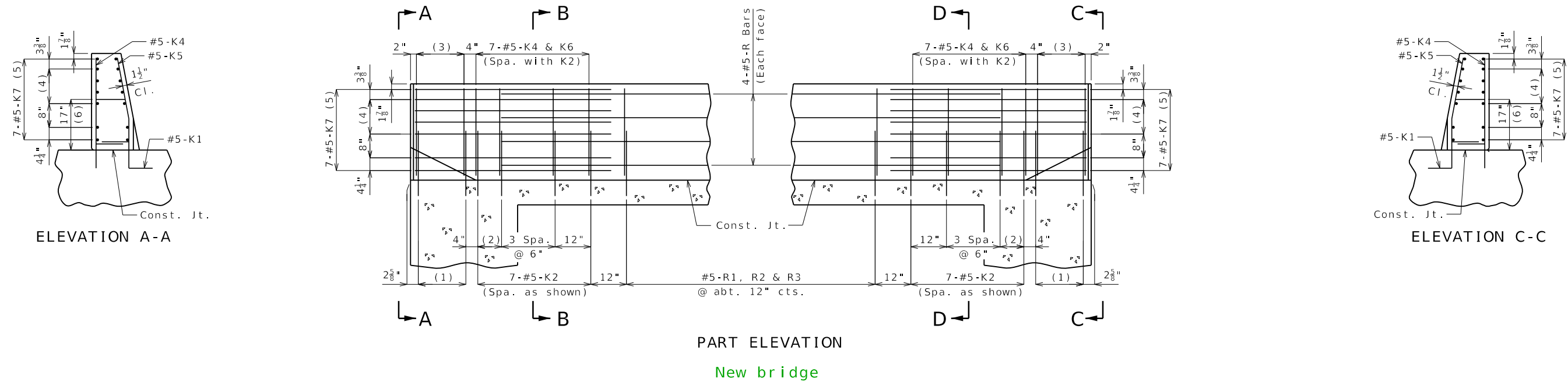
All dimensions are out to out.

DATE PREPARED	
8/18/2025	
ROUTE	STATE
	MO
DISTRICT	SHEET NO.
	BAR 10
COUNTY	

JOB NO.
CONTRACT ID.
PROJECT NO.
BRIDGE NO.

[illegible]MISSOURI HIGHWAYS AND TRANSPORTATION
COMMISSION

105 WEST CAPITOL
JEFFERSON CITY, MO 65102
1-888-ASK-MODOT (1-888-275-6636)



For K1 bars, use dimensions for integral end bent.
End bents with straight wings (elephant ear)