

MoDOT



**MIDMO**  
**ADA**

**Project Director: Chris Brownell**

**Team: Tony Marzuco, Yahkhub Shebib,  
Brynn Schmauch, James Beattie**

*Industry Meeting April 6, 2020*

# Project Purpose & Need

- Complete the current ADA Transition Plan for MoDOT's Central District
  - The Transition Plan is an Action Plan that identifies ADA barriers and sets a timeframe to bring into compliance

# Project Goals

1. Deliver the project within the program budget of \$13.6 million.
2. Bring designated pedestrian facilities into ADA compliance
3. Use innovation to maximize improvements that provide long-lasting and safe pedestrian facilities
4. Safely deliver a project that minimizes and mitigates construction impacts through construction staging and communication efforts
5. Complete the project no later than December 1, 2022



# Right of Way

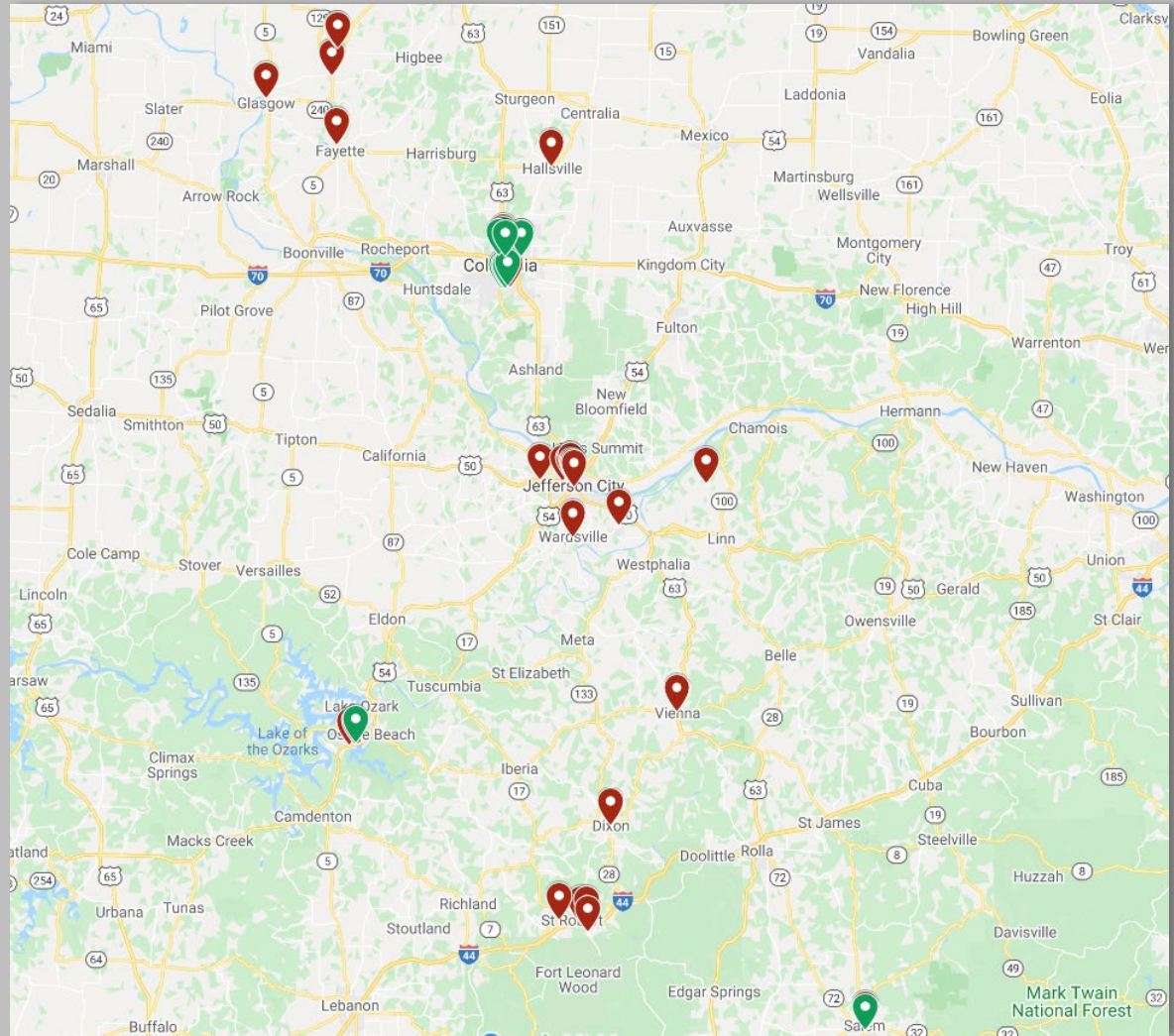
- ROW
  - MoDOT plans on sharing this risk in the form of an incentive that will be determined later.
  - The need for right of way easements will be determined by the selected Best Value Team.
  - The selected Team will develop right of way plans and submit to MoDOT.
  - MoDOT will acquire the requested easements.

# Existing ADA Compliance

- Existing Compliance
  - MoDOT has determined that ADA compliance barriers exist at each Project location.
  - The selected Team will be responsible to determine the extent of work required to make each Project location ADA compliant.

# Project Locations

- 8 Counties
- 16 Cities
- 30 locations



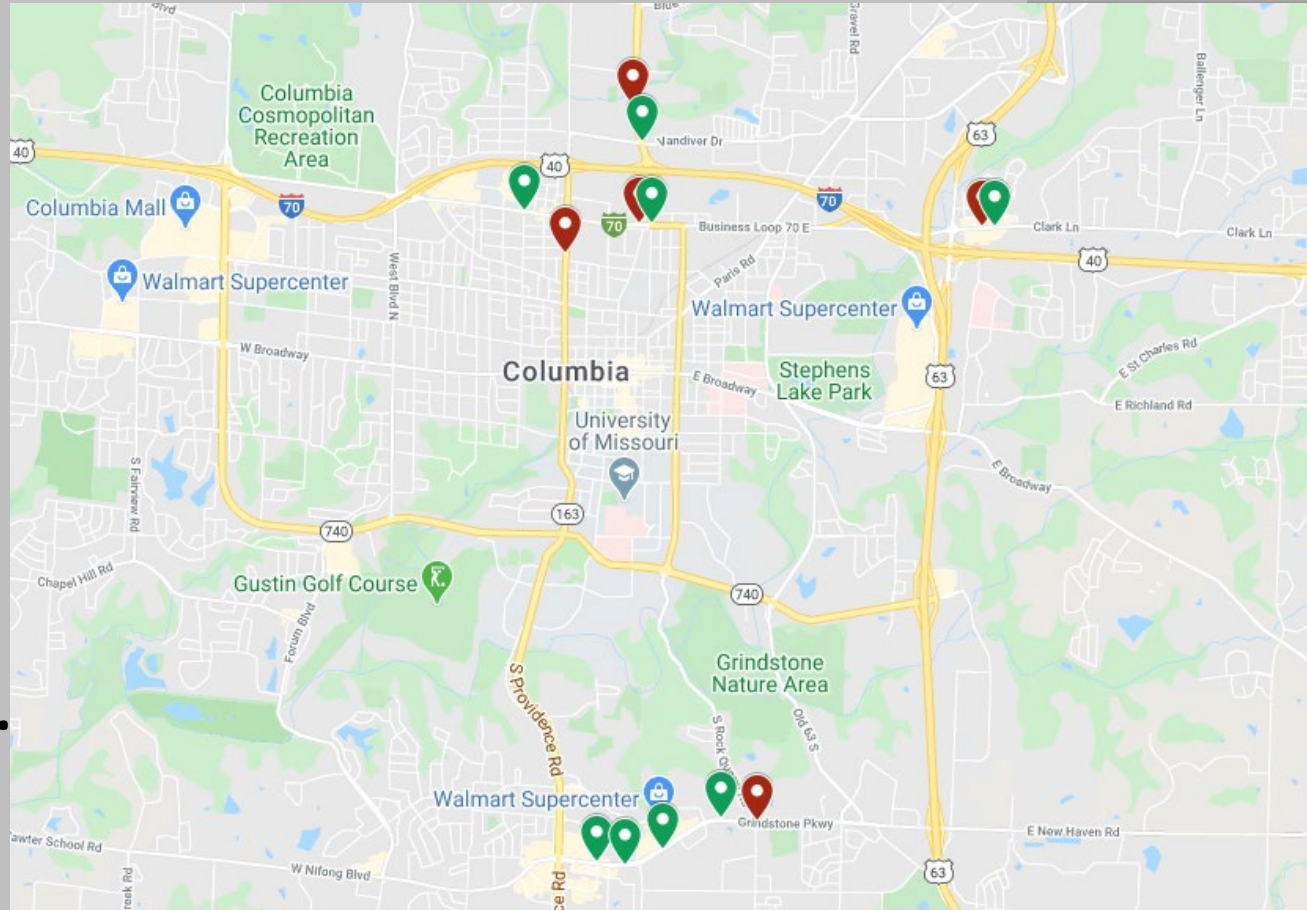
MidDOT





# Boone County - Columbia

- Rangeline St. (763)
- Grindstone Pkwy (AC)
- Bus Loop 70
- Clark Ln (PP)
- Providence Rd. (163)

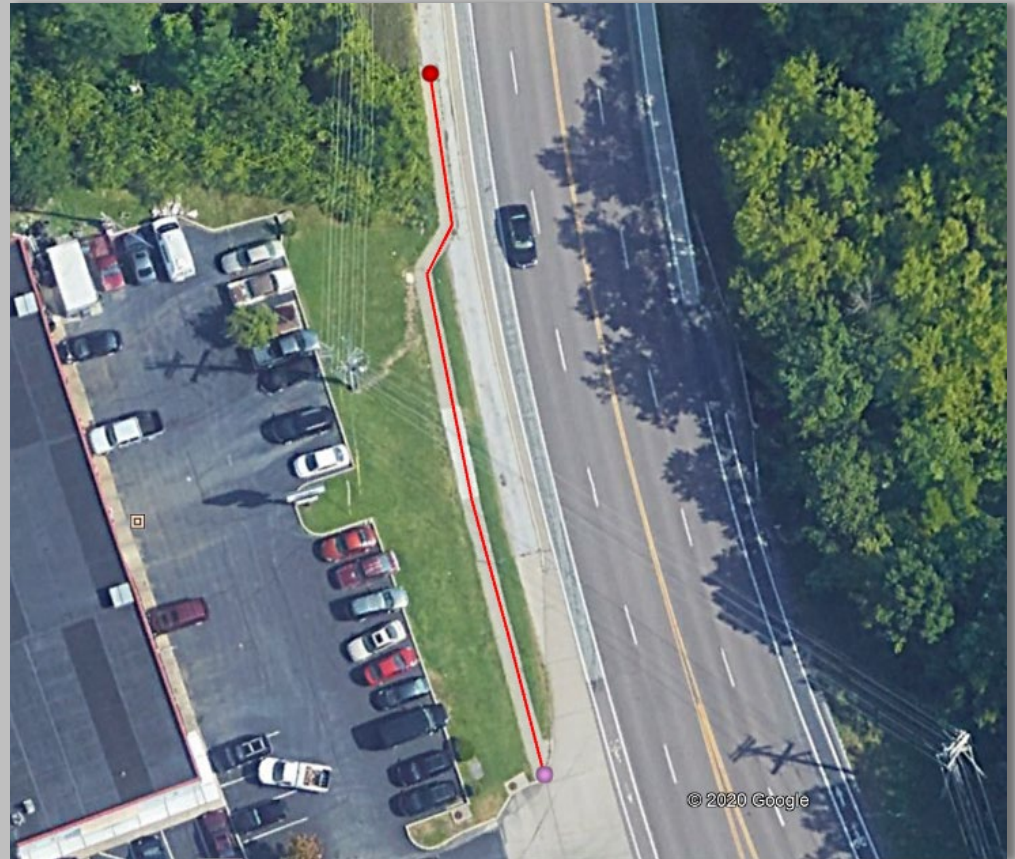
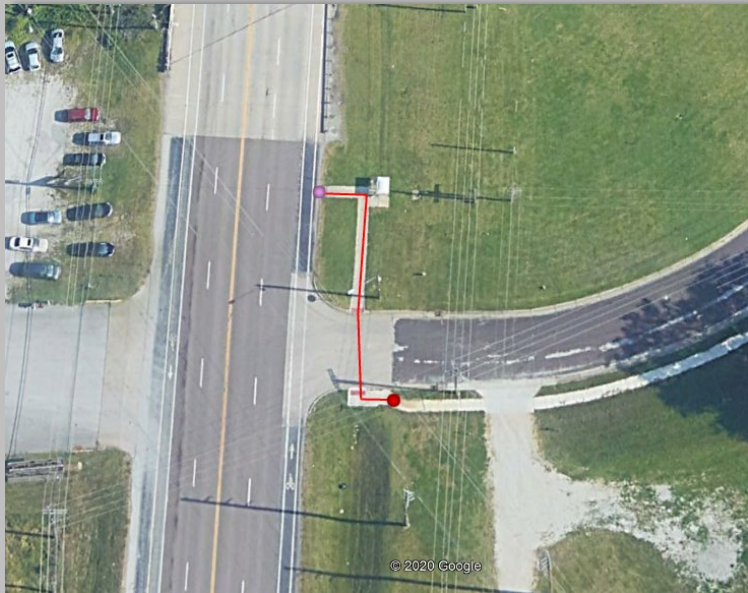


MoDOT



# Columbia – Rangeline St.

- ADA facilities:  
sidewalk, curb ramps,  
entrances



MoDOT





# Columbia – Grindstone Pkwy.

- ADA facilities:  
sidewalk,  
curb ramps,  
entrances,  
ped crossing



MoDOT



**Columbia – Bus. Loop 70**

- ADA facilities:  
sidewalk,  
curb ramps,  
entrances,  
ped crossings





# Columbia – Clark Lane

- ADA facilities: sidewalk, curb ramps, entrances



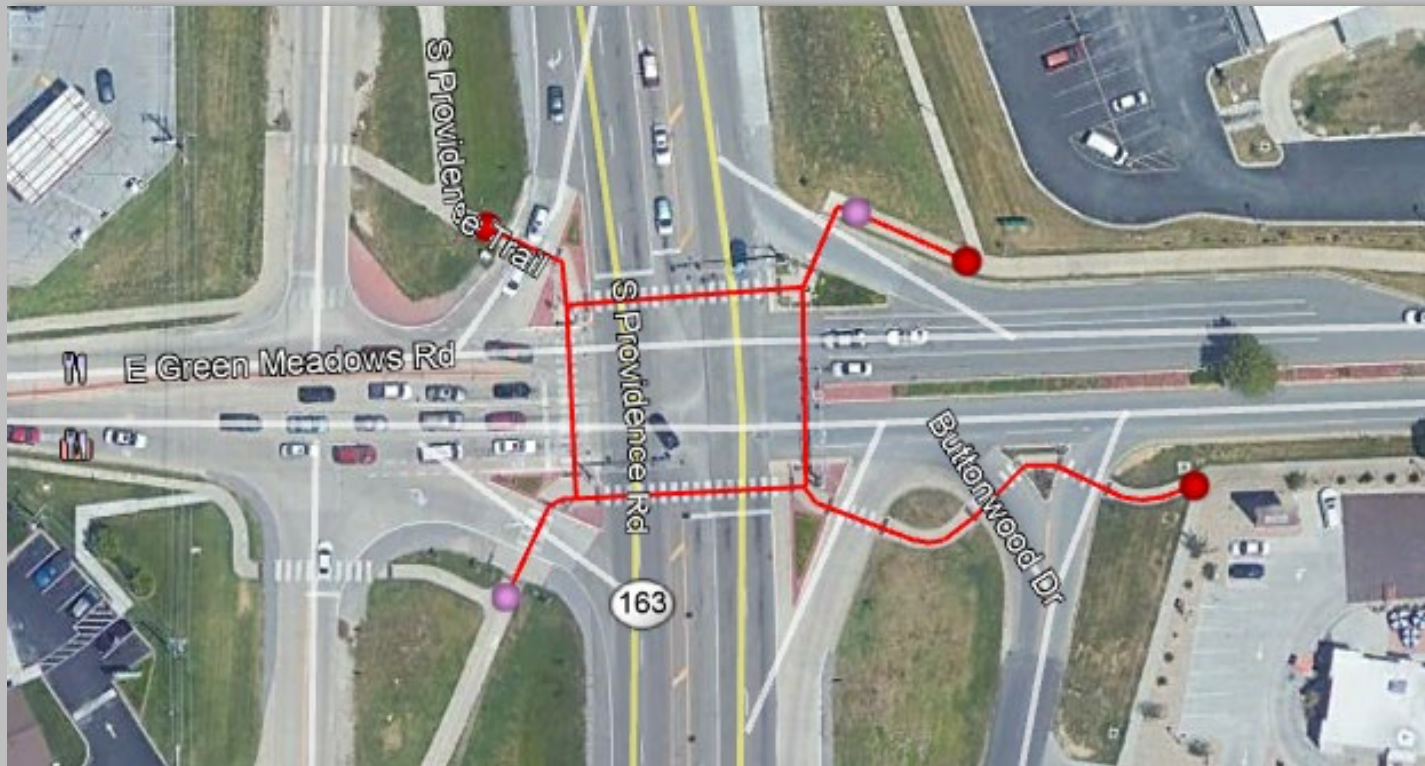
MoDOT

MIDMO  
ADA



# Columbia – Providence Rd.

- ADA facilities: Upgrade ped signals



MoDOT

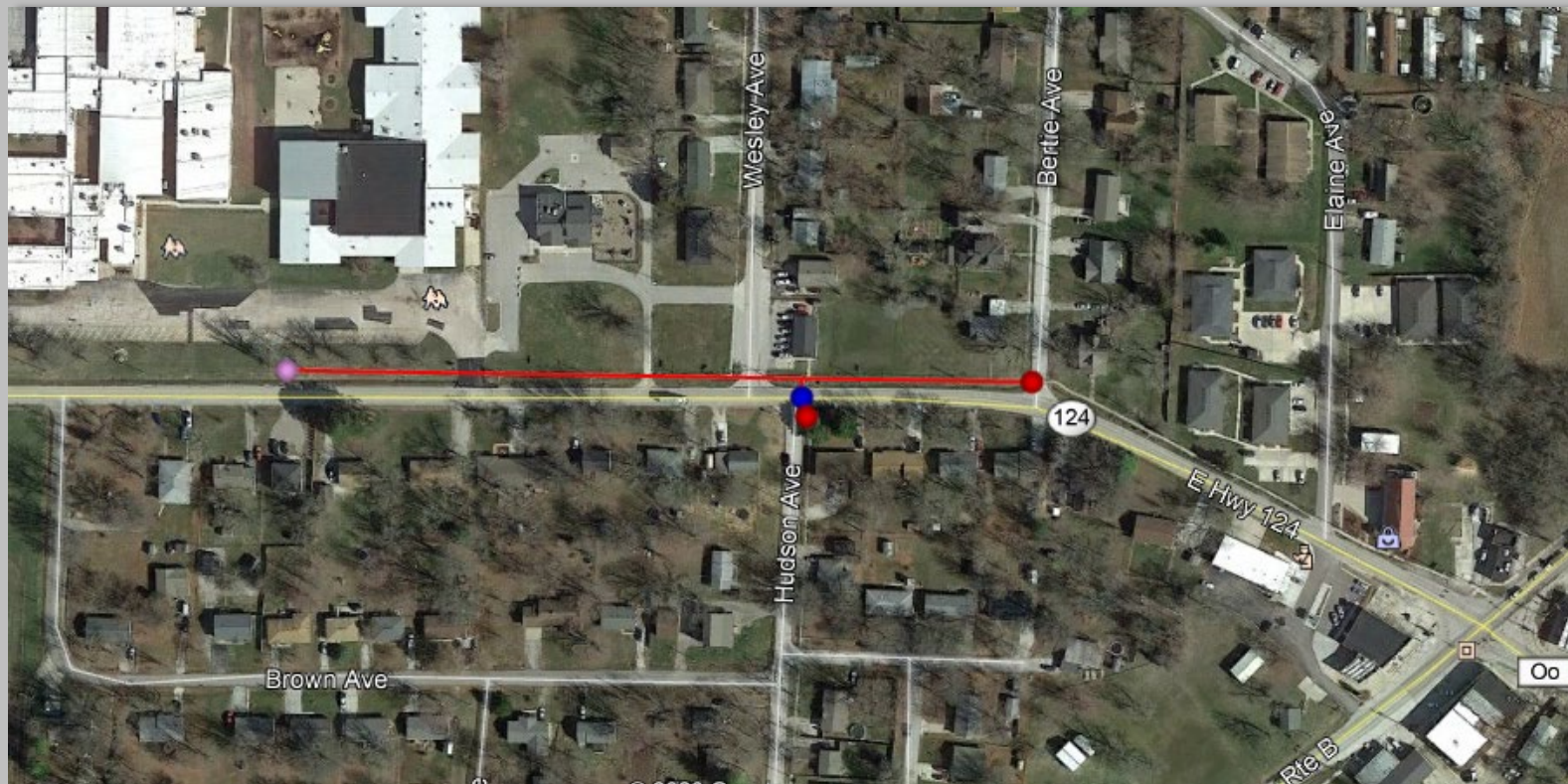
MIDMO  
ADA





# Boone Co. – Hallsville

- ADA facilities: sidewalks, curb ramps, entrances



MoDOT



MIDMO  
ADA



# Camden Co. – Osage Beach

- ADA facilities: sidewalks, curb ramps, entrances, ped crossing

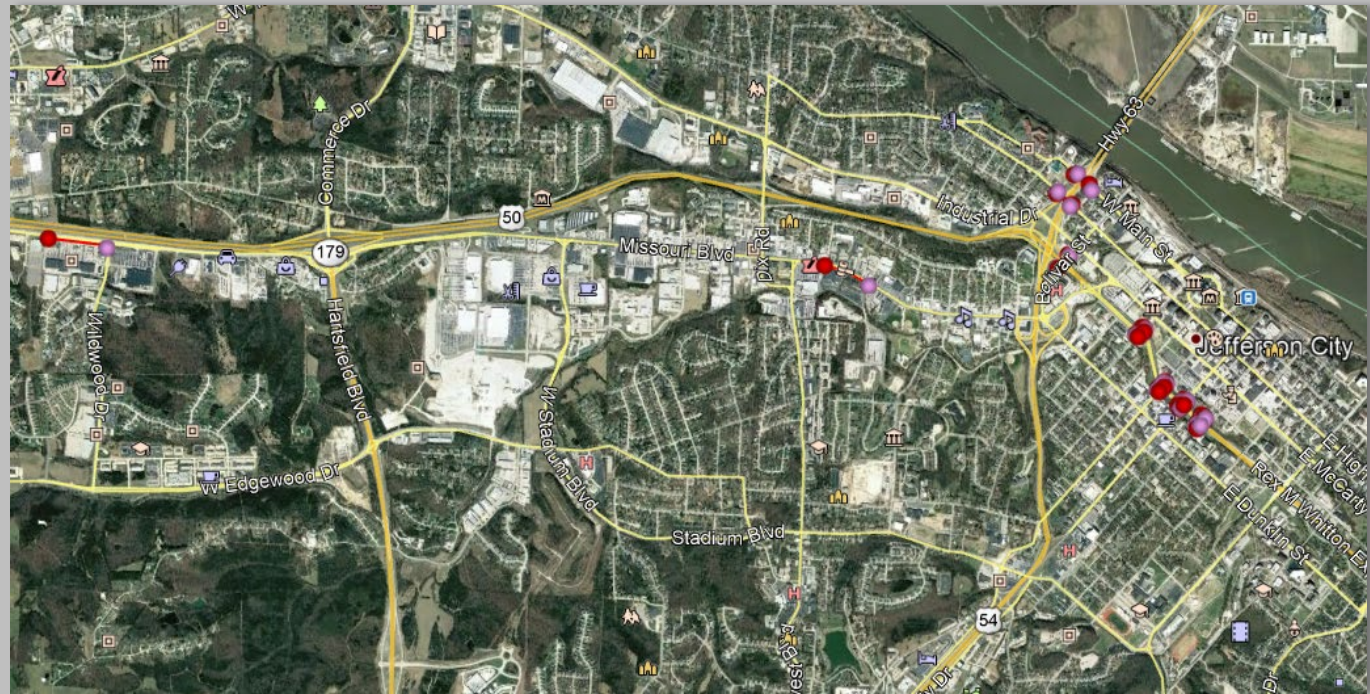


MoDOT



# Cole Co. – Jefferson City

- Missouri Blvd
- Bolivar St
- Main St
- High St
- US 50 – Whitton Expy



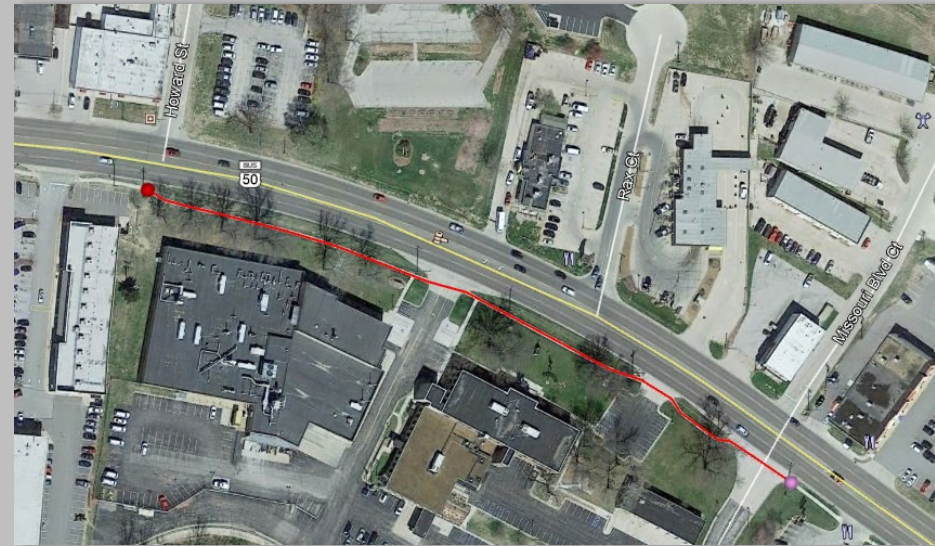
MoDOT





# Jefferson City – Missouri Blvd

- ADA facilities: sidewalk, curb ramp, entrances

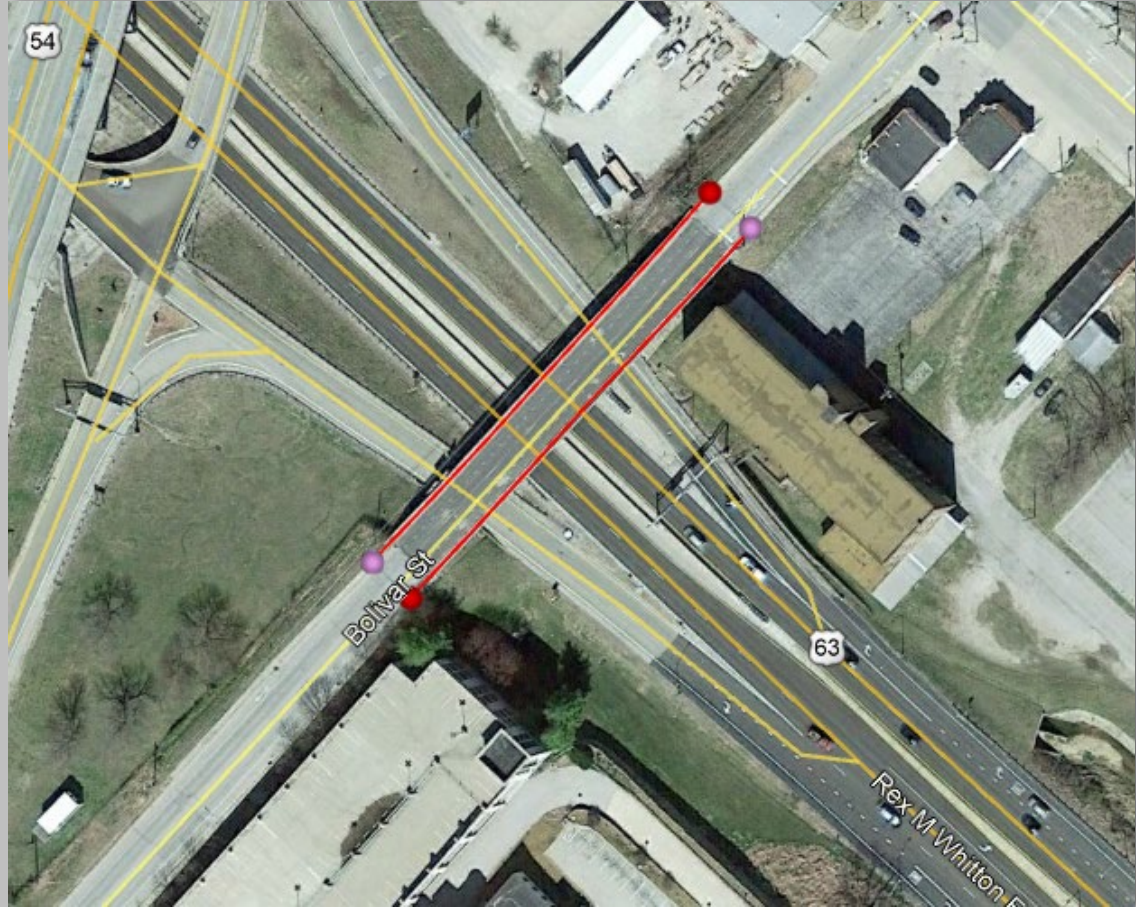


MoDOT



# Jefferson City – Bolivar St

- ADA facilities:  
sidewalk, bridge  
walk



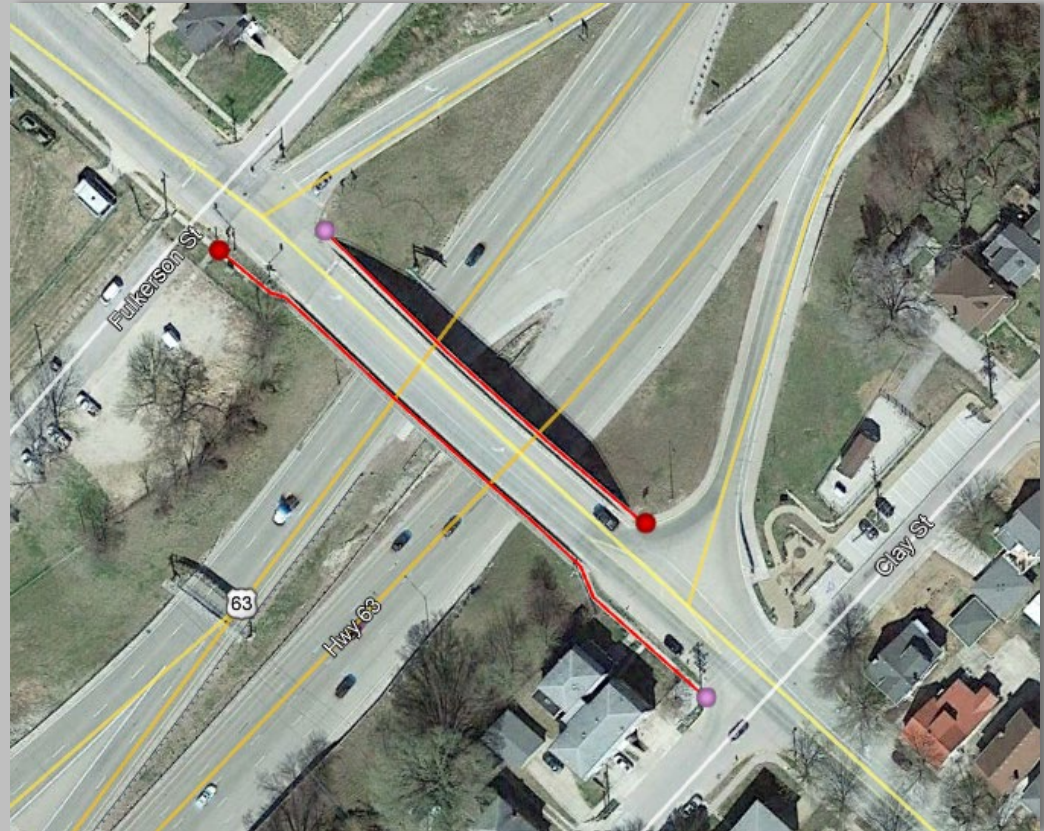
MoDOT





# Jefferson City – Main St

- ADA facilities:  
sidewalk, bridge  
walk, curb ramp



MoDOT





# Jefferson City – High St

- ADA facilities:  
sidewalk, bridge  
walk



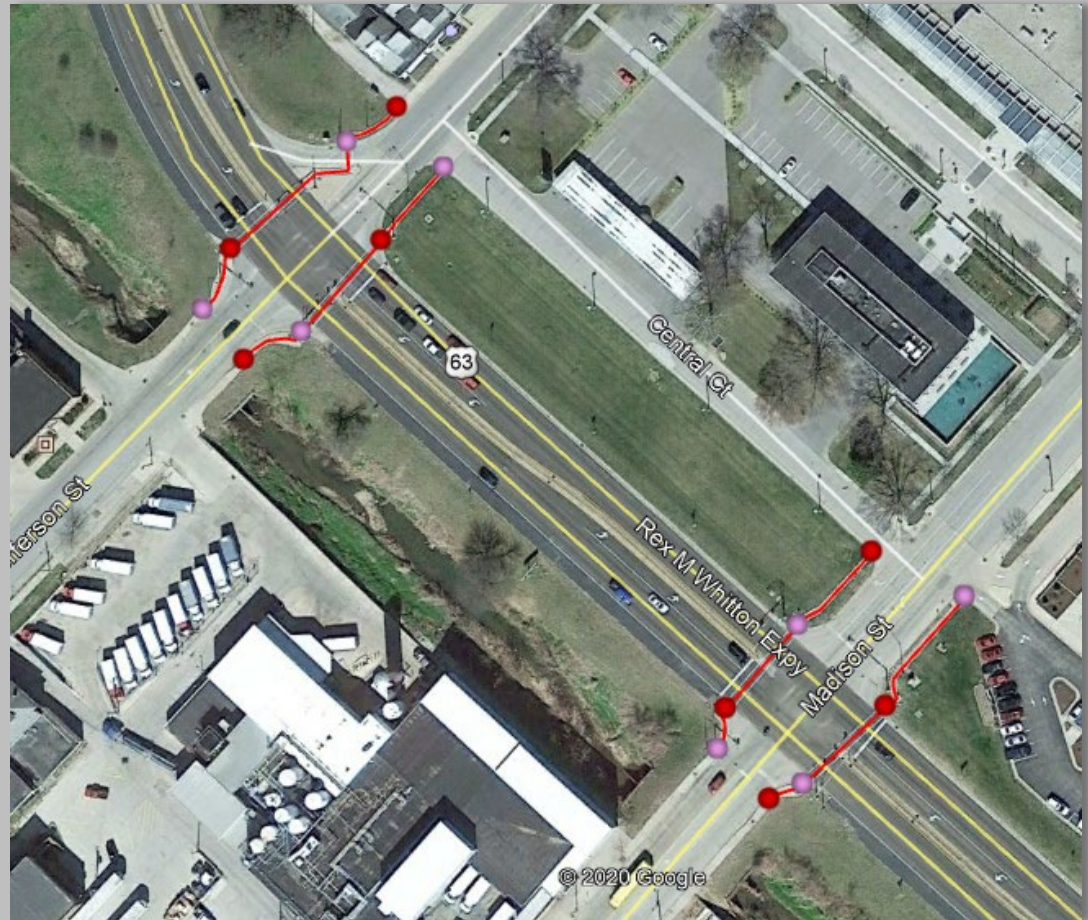
MoDOT

MIDMO  
ADA



# Jefferson City – US 50 (Whitton)

- ADA facilities:  
sidewalk, ped  
signal, curb  
ramp



MoDOT

MIDMO  
ADA





# Cole Co. - Taos

- ADA facilities: sidewalk, curb ramp, entrances



MoDOT

MIDMO  
ADA



# Cole Co. - Wardsville

- ADA facilities: sidewalk, entrances



MoDOT

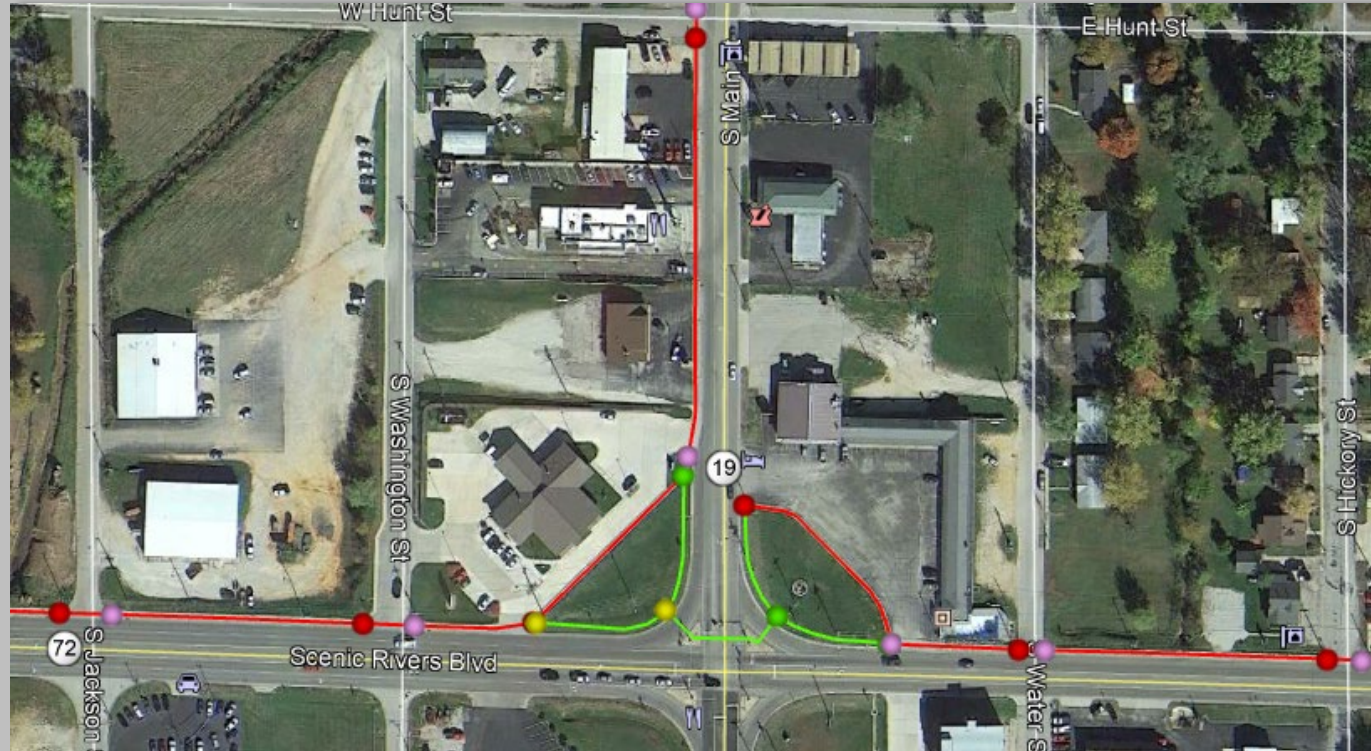
MIDMO  
ADA





# Dent Co. - Salem

- Rte. 32/72
- Rte. 19
- ADA facilities:  
sidewalk,  
curb ramp,  
entrances



MoDOT

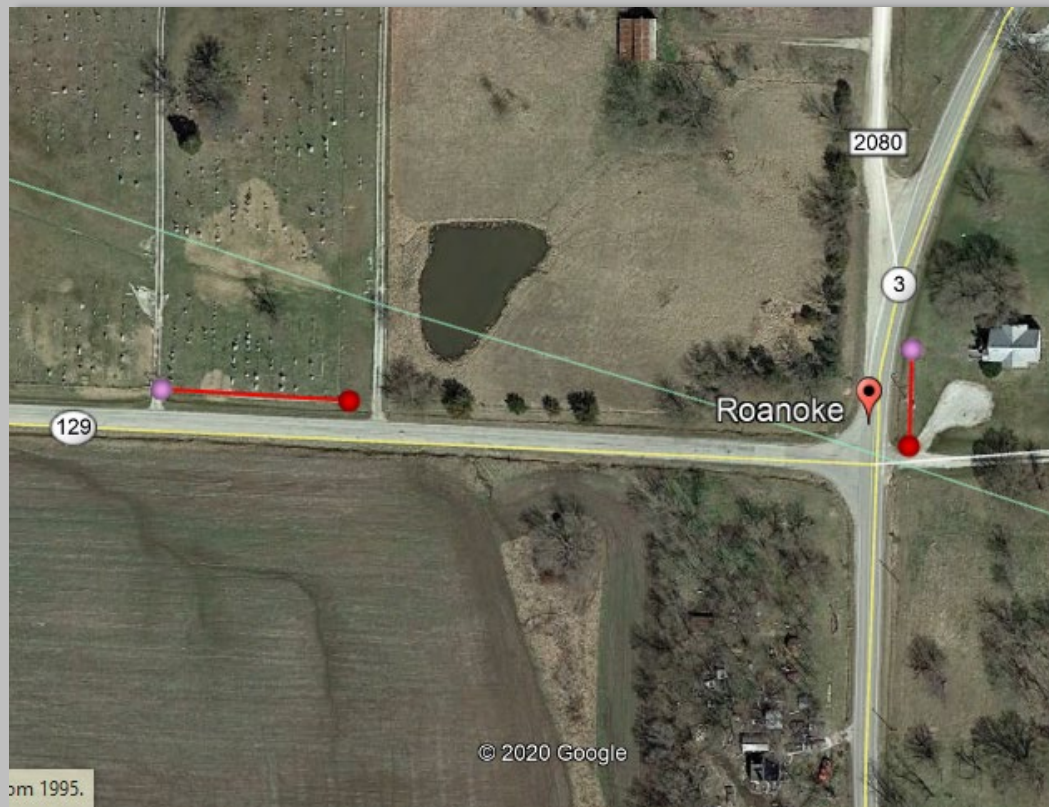
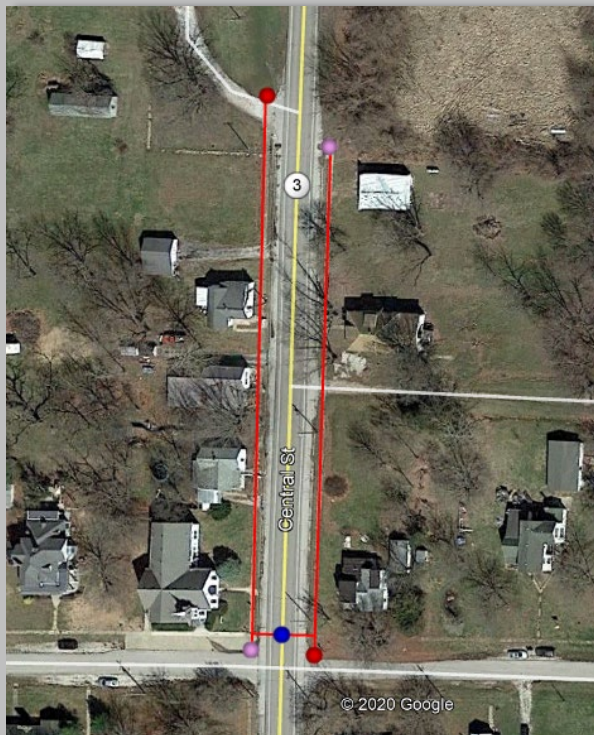
MIDMO  
ADA





# Howard Co. – Armstrong, Fayette, Glasgow, Roanoke

- ADA facilities: sidewalk, curb ramp, ped crossings, entrances



MoDOT



# Maries Co. – Vienna

- ADA facilities: sidewalk, curb ramp, entrances



MoDOT

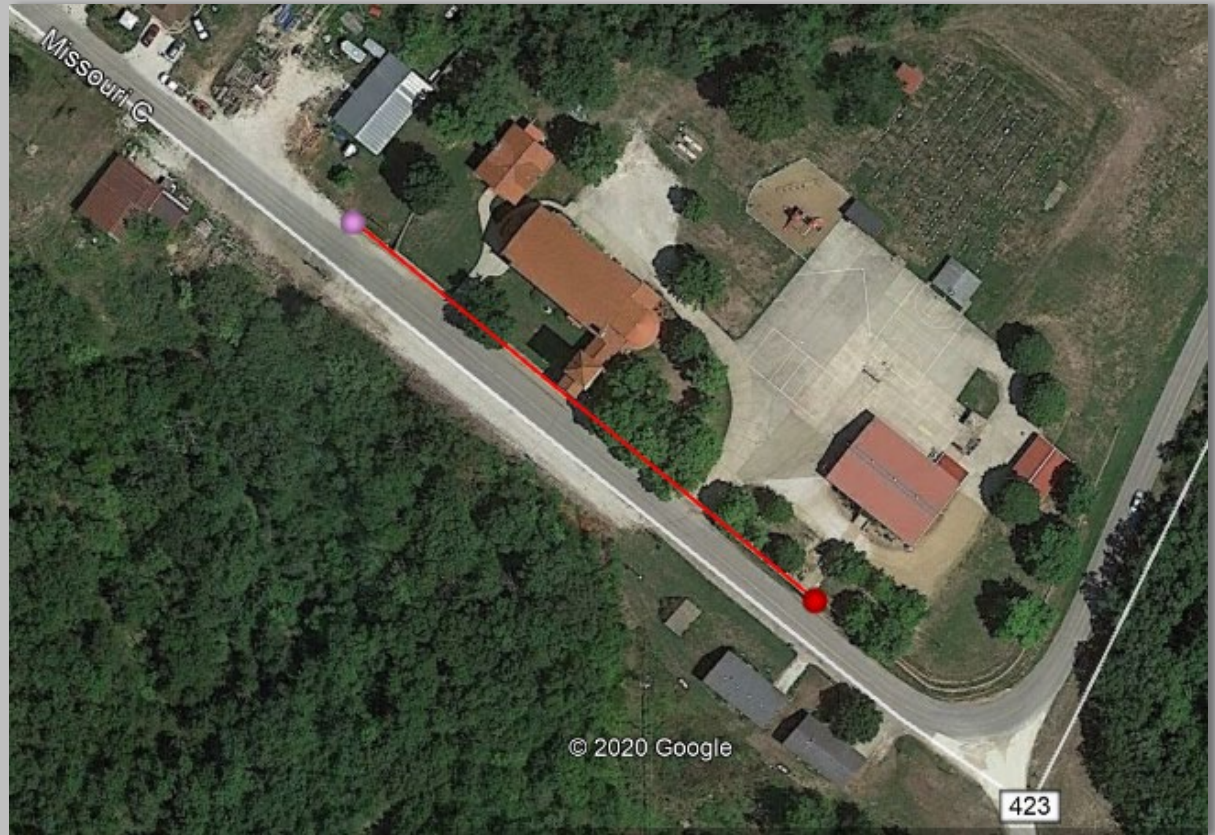


MIDMO  
ADA



# Osage Co. – Frankenstein

- ADA facilities:  
sidewalk,  
entrances



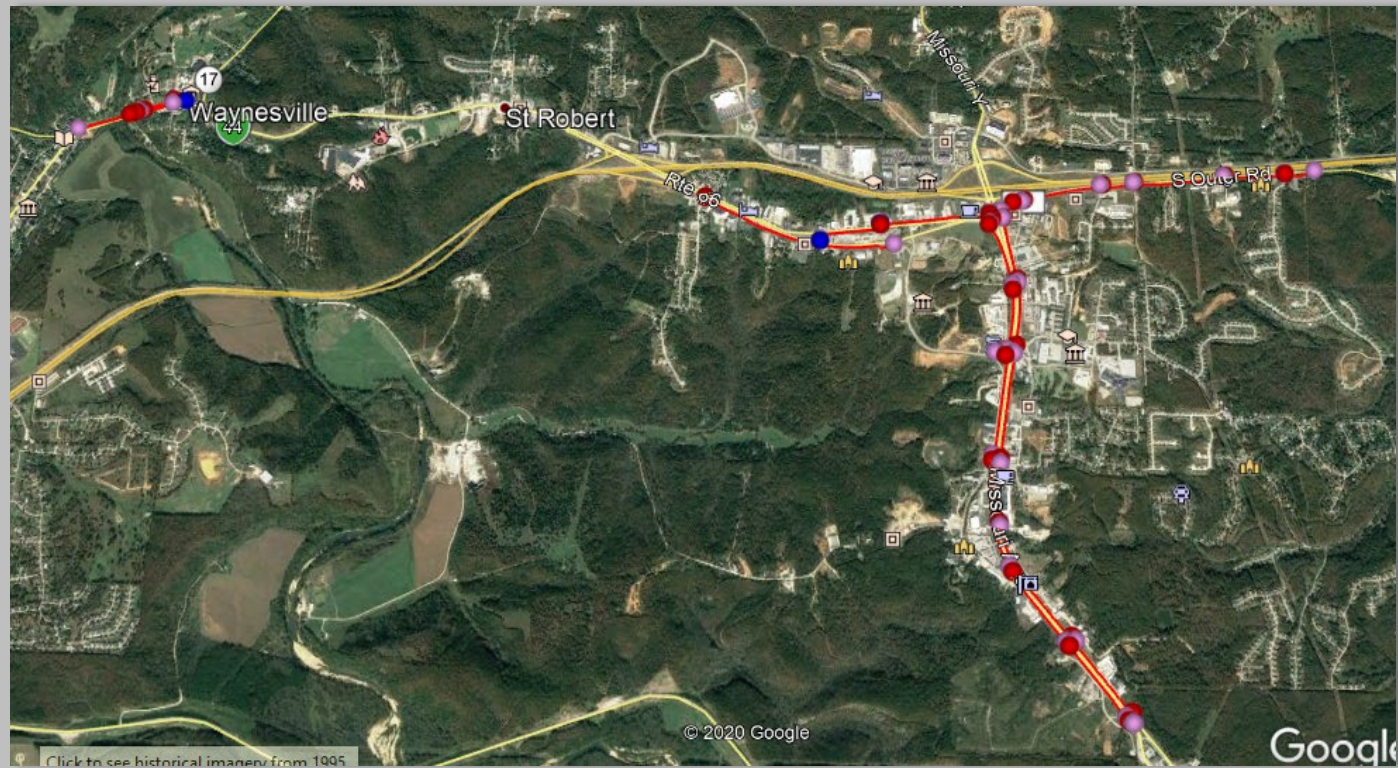
MoDOT

MIDMO  
ADA



# Pulaski Co. – Dixon, St. Robert, Waynesville

- Dixon
  - Rte. 28
- St. Robert
  - EB/WB Bus 44
  - I-44 Spur
  - Rte. Z
- Waynesville
  - Rte. 17



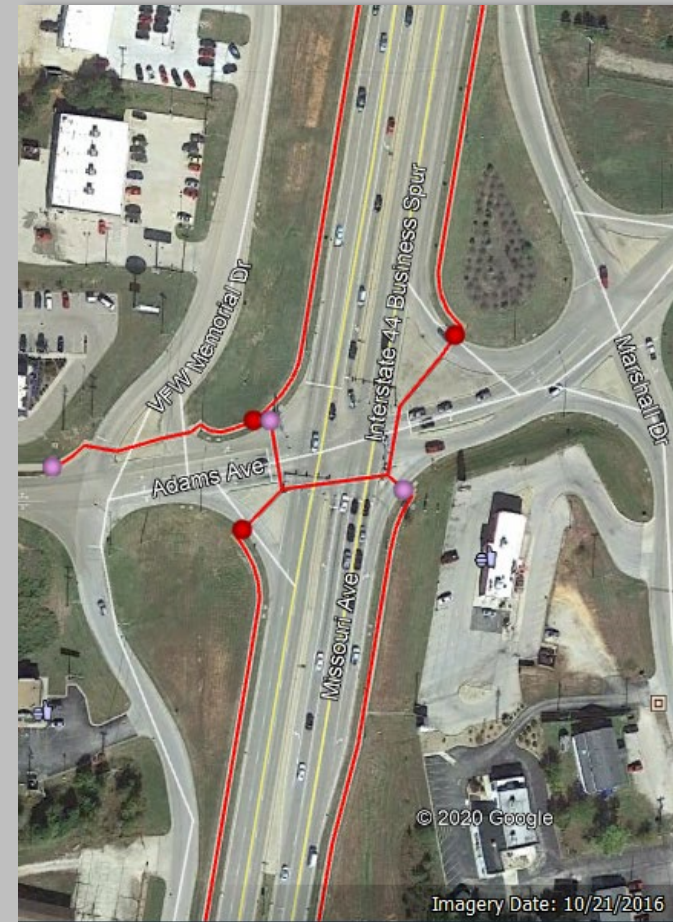
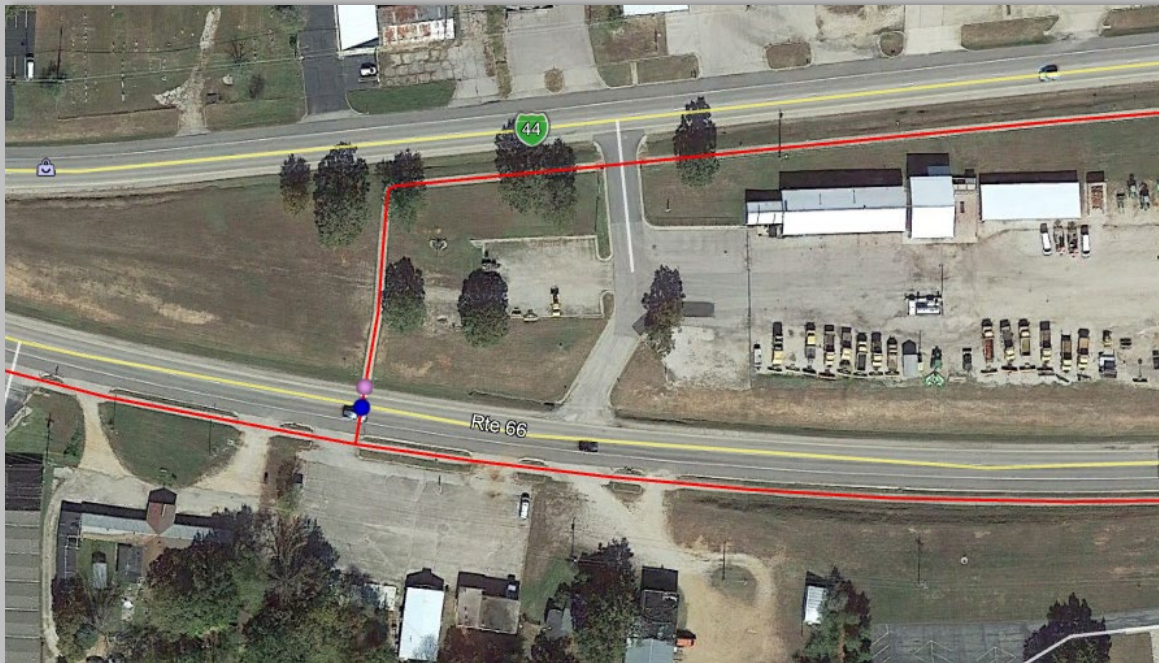
MoDOT





# Pulaski Co. – Dixon, St. Robert, Waynesville

- ADA facilities: sidewalk, entrances, ped crossings, ped signals



MoDOT





# Potential Add Alternative Value

## Improvements not on ADA Transition Plan

<b>Boone</b>	<b>Columbia</b>	<b>Clark Lane</b>	<b>Intersection at Creekwood Parkway</b>
		<b>Rangeline Street</b>	<b>Intersection at Vandiver Drive</b>
<b>Dent</b>	<b>Salem</b>	<b>Scenic Rivers Blvd.</b>	<b>Intersection at Route 19 (Main Street)</b>
<b>Camden</b>	<b>Osage Beach</b>	<b>Osage Beach Pkwy</b>	<b>Intersection at Jeffries Road</b>
<b>Boone</b>	<b>Columbia</b>	<b>Nifong/Grindstone</b>	<b>Several intersections along Nifong &amp; Grindstone</b>
		<b>Business Loop 70</b>	<b>Intersections at Garth Ave &amp; Rangeline St</b>

# Reducing Risk

- The MoDOT Team will continue to work towards reducing risk in the following areas:
  - Utilities
  - Environmental
  - Third party agreements
- Wood Environment & Infrastructure Solutions, Inc.
  - Currently working on an environmental research project that we will include in the early to release information.
  - They are not precluded to participating in this Project at this time.



# Anticipated Schedule

Release Request for Qualifications	April 6, 2020
Statement of Qualifications Due	May 1, 2020
Notification of Shortlist	May 11, 2020
Release Request for Proposals	June 1, 2020
Technical Discussions	June - July, 2020
Final Technical Proposals & Price Allocation Due	July 27, 2020
MHTC Best Value Selection	September 2, 2020
Notice To Proceed	Fall, 2020

# DBE & Workforce Goals

- An anticipated DBE goal has been established for the Project:
  - 12% Construction – 8% Professional Services
- An anticipated Workforce Goal has been established for the Project:
  - 12% for minorities and 6.9% for woman in all counties
  - One (2) OJT slot at 1,000 hours for construction

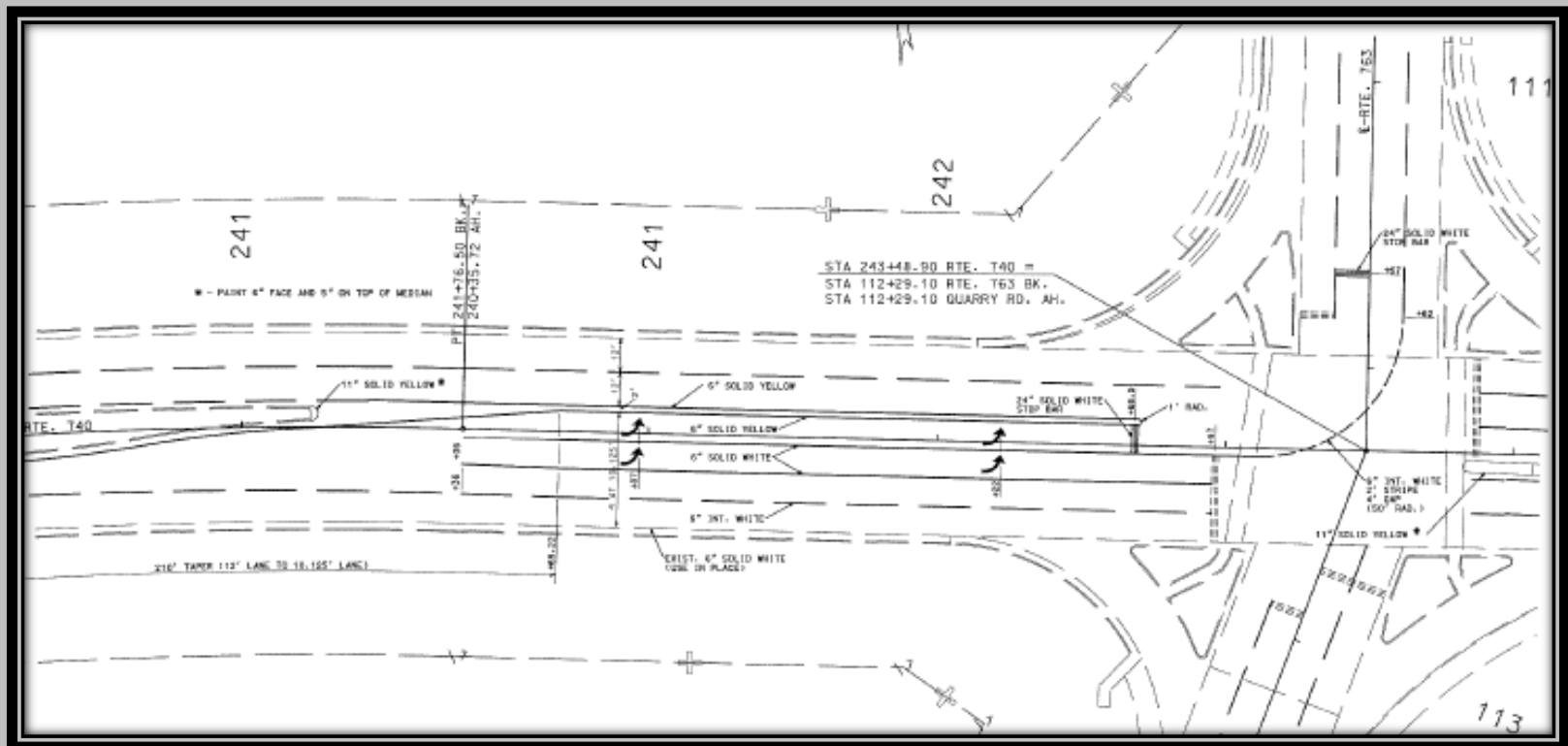


# Anticipated Budget

- Total Program: \$13.6 million
  - PE/CE Internal
  - Utilities
  - R/W acquisition
  - Stipends \$40,000.00
- Design-Build Contract: \$10.6 million

## Existing Plans

Early to release information coming soon.





# Project Goals

1. Deliver the project within the program budget of \$13.6 million.
2. Bring designated pedestrian facilities into ADA compliance
3. Use innovation to maximize improvements that provide long-lasting and safe pedestrian facilities
4. Safely deliver a project that minimizes and mitigates construction impacts through construction staging and communication efforts
5. Complete the project no later than December 1, 2022



# Thank You!

We appreciate your interest in  
our Project!

Any Questions???

MoDOT

