

BIDDING AND CONTRACT DOCUMENTS
ADDENDUM NUMBER THREE
MODOT AVIATION PROJECT NO. 196-090A-2
MODOT JOB NO. J01911DA

DATE: April 3, 2020

JOPLIN REGIONAL AIRPORT

CRAWFORD, MURPHY, TILLY, INC.
ONE MEMORIAL DRIVE, SUITE 500
SAINT LOUIS, MISSOURI 63102

TO: ALL PLANHOLDERS AND POTENTIAL BIDDERS

SUBJECT: ADDENDUM NUMBER TWO TO THE BIDDING DOCUMENTS FOR:
RECONSTRUCTION AND REALIGNMENT OF DENNIS WEAVER DRIVE



This addendum forms a part of the bidding and contract documents and modifies the original bidding documents dated March 5, 2020. This addendum must be signed on the last page and included with the submitted Bid Package. FAILURE TO NOT RECOGNIZE THE ADDENDUM ON THE PROPOSAL FORM MAY SUBJECT THE BIDDER TO DISQUALIFICATION.

The Contract Documents are revised as follows:

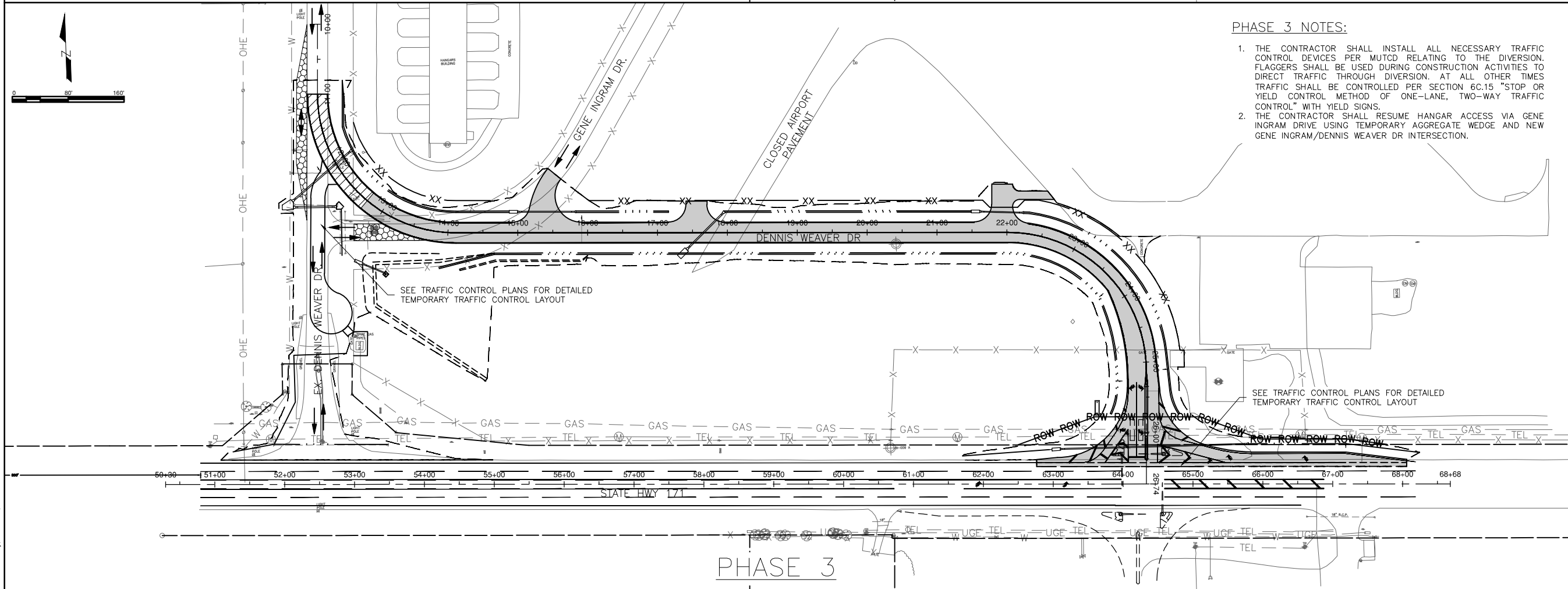
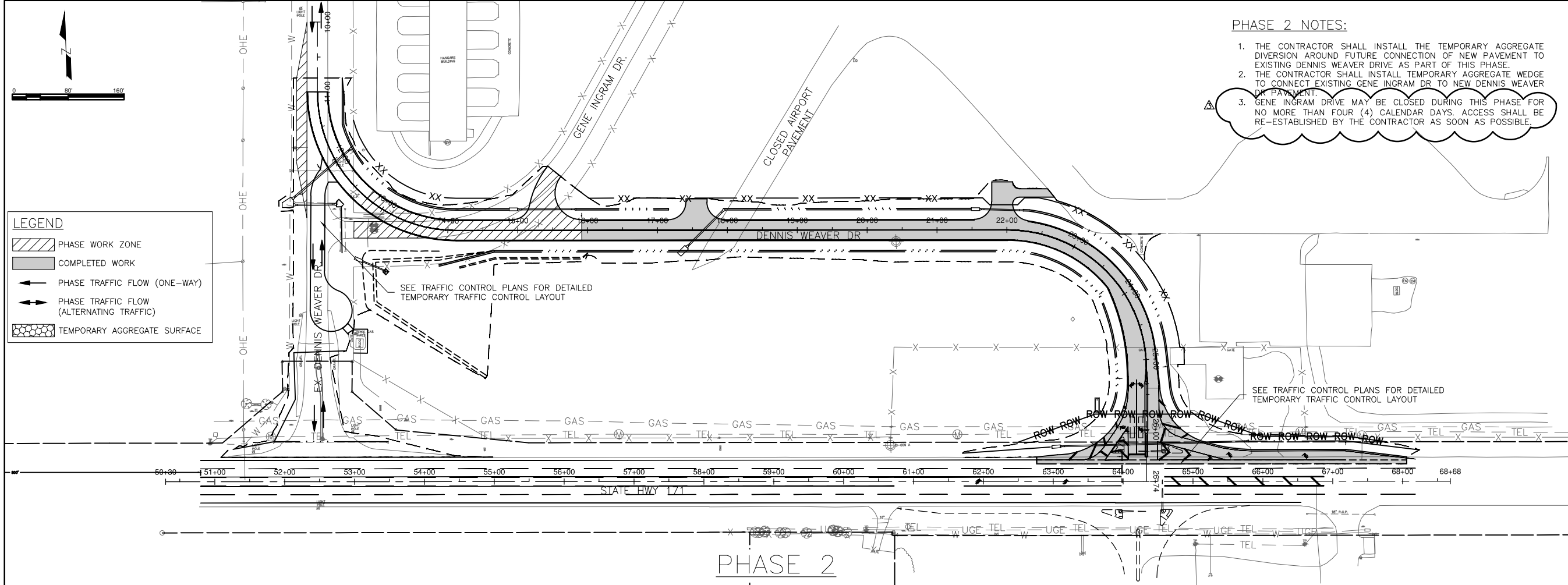
PLANS

Sheet 04 of 35

REPLACE Sheet 26 of 35 with REVISION 3.

CRAWFORD, MURPHY & TILLY, INC.

This Addendum consists of 4 pages. This signed Addendum must be submitted as part of the Bid Package



© Copyright CMT, Inc. 2018

ONE MEMORIAL DRIVE, SUITE 500
ST. LOUIS, MO 63102
P: (314) 438-5500 www.cmtengr.com
PROFESSIONAL ENGINEERING - 000631

FINAL PLANS

DENNIS WEAVER DRIVE REALIGNMENT AND RECONSTRUCTION



BRANDON P. McELHINEY - ENGINEER
MO PE-2018028586



JOPLIN REGIONAL AIRPORT AUTHORITY
JOPLIN, MO

4/2/20 GENE INGRAM CLOSURE

MARK DATE DESCRIPTION

PROJECT NO: 19009200
CAD DWG FILE: 19009200-PHASING ADDENDUM 3.dwg
DESIGNED BY: BPM
DRAWN BY: BPM
CHECKED BY: ARS
APPROVED BY: TM

DATE: 28 FEBRUARY 2020

SHEET TITLE
CONSTRUCTION PHASING
PLAN

PH-02

SHEET 26 OF 35

ACKNOWLEDGEMENT

Each bidder shall acknowledge receipt of this **Addendum No. 3** of ***Reconstruction and Realignment of Dennis Weaver Drive*** by his/her signature affixed hereto, and shall attach this Addendum to the original bid.

CERTIFICATION BY BIDDER

SIGNATURE _____

TITLE _____

COMPANY _____

DATE _____

FAX TRANSMITTAL

To: Crawford, Murphy & Tilly, Inc

Attention: **Tom Morris**

Re: Addendum #3

Fax 314.436.0723

From:

(name)

(company)

Date:

To verify that all contractors are in receipt of this addendum, Contractors are asked to sign and date this acknowledgement sheet. The Contractor should **fax, email or mail** to Crawford, Murphy, & Tilly, Inc. at the number listed below by **April 7, 2020**.

Crawford, Murphy, & Tilly, Inc.
One Memorial Drive, Suite 500
Saint Louis, Missouri 63102

Fax: (314) 436-0723
Phone: (314) 436-5500

Email : tmorris@cmtengr.com

BY: CRAWFORD, MURPHY, & TILLY, INC.