



SCI ENGINEERING, INC.

Earth. Science. Solutions.

SCI is a multi-discipline professional consulting engineering firm offering Environmental, Geotechnical, Natural Resource, Cultural Resource and Construction Materials Testing Services from design development through final construction. SCI works with clients across the country in a variety of markets.



**Federal
Government,
Local Agencies**



**Urban
Redevelopment**

- Single Structure
- Multi-phased
- High Profile Projects

Residential

Multifamily, Senior Living and Single Family Developments



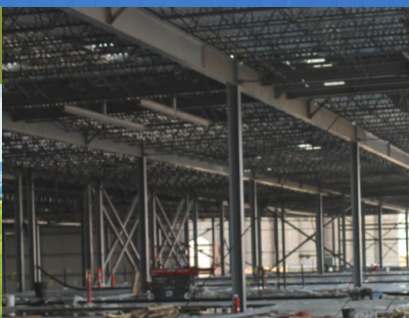
**Commercial/
Retail**



Energy



Transportation



**Industrial/
Warehouse**

Healthcare



Education



**For more information contact Ed Grimmer, Vice President at
(636) 949-8200 • egrimmer@sciengineering.com • www.sciengineering.com**



Earth. Science. Solutions.

Environmental Services

- Phase One and Two Environmental Site Assessments
- NEPA Evaluations and Consultations
- Third Party Air Sampling
- UST Removal Monitoring, Reporting and Plume Delineation
- Remedial Action Plans, System Monitoring and Reporting
- GeoProbe, Piezometer and Monitoring Well Installations
- Subsurface Explorations
- Surveys for Asbestos, Lead-based Paint, and Mold
- Remediation Specifications
- National Pollutant Discharge Elimination System (NPDES) Monitoring and Reporting
- Spill Prevention Control and Countermeasure (SPCC) Plans
- Compliance Audits and Annual Emissions Reporting
- Noise testing Services
- Risk Assessments
- Regulatory Consulting

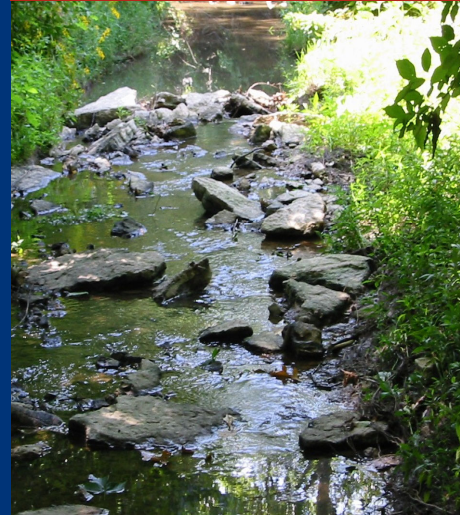


Geotechnical Services

- Foundation Analysis
- Seismic Hazard Analysis
- Soil Borings
- Soil Stabilization
- Excavation Design
- Slope Stability Analysis
- Geophysical Imaging — GPR, etc.
- Groundwater Studies
- Earth Dam Design
- Pavement Design
- Failure Analysis
- Retaining Wall Design
- Subsurface Exploration
- Undermining Evaluation & Remediation

Natural Resource Services

- Stream and Wetland Mitigation Banking
- Wetland Delineations and Permitting
- Endangered Species Consultation
- Bioengineering/Biostabilization
- Natural Resource Mapping Watershed Assessments
- Flora and Fauna Studies
- 401, 402, 404 Clean Water Act Permits
- Wetland and Stream Restoration Design
- Stormwater Pollution Prevention Plans
- Water Quality Sampling and Monitoring
- Erosion Control Monitoring



Construction Services

- Structural Masonry Quality Control
- Portland Cement Quality Control
- Asphaltic Concrete Quality Control
- Foundation Testing
- Controlled Earth Fill Testing
- Structural Steel Observation
- Laboratory Soil Testing
- Aggregate Testing
- USACE-Certified Laboratories
- Non-destructive Testing
- ICC-certified Special Inspectors for:
 - Structural Steel Welding
 - Structural Masonry
 - Reinforced Concrete
 - Post-Tensioned Concrete
 - Fireproofing



Cultural Resource Services

- Section 106 Correspondence
- Archaeological Surveys
 - Phase I, Phase II and Phase III
- Historic Cemetery Delineation
- Geophysical Investigations
- Native American Consultations
- Historic Property Documentation
 - HABS/HAER
- View Shed Calculations
- Archaeological/Historic Property Impact Studies
- Historic Research
- Pre-Construction Consultations
- Archaeological Monitoring of Construction

**For more information contact Ed Grimmer, Vice President at
(636) 949-8200 • egrimmer@sciengineering.com • www.sciengineering.com**

Environmental Services—NEPA



SCI ENGINEERING, INC.

Representative Projects:

Interstate 70 Downtown Depressed Section

Interstate 70 Outer Road Improvements

Echo Bluff State Park

I-70 Cave Springs to Mid Rivers Mall Drive

St. Charles Gateways

Dorsett Road and Highway 270 Reconstruction

Columbia Crossing Interchange

Governors' Parkway

Crosstown Road

Fort Leonard Wood Substations

Prairie Du Pont/ Fish Lake Levee

"I want to thank SCI for exceptional services....SCI's responsiveness, professionalism, field experience and broad range of geological, asbestos, and other environmental expertise have served Norfolk Southern's requirements without exception."

—W. Bryan Salley
Engineer Environmental Operation
Norfolk Southern Corporation

SCI Engineering offers a wide range of consulting services that include National Environmental Policy Act (NEPA) evaluations, Environmental Site Assessments, asbestos and mold surveys, underground storage tank (UST) removal monitoring and investigation, and air permitting and monitoring. Understanding the importance of technical expertise in the environmental industry, our professionals are committed to keeping abreast of ever-changing state and federal regulations.

SCI has performed numerous Environmental Site Assessments to comply with the National Environmental Policy Act (NEPA) and also has the capacity to provide all aspects of NEPA services including Displacements, Farmland Impacts, Wetland Impacts, Water Quality Impacts, Floodplain Impacts, Air Quality Impacts, Noise Impacts, Cultural Resource Impacts, Section 4(f), Threatened and Endangered Species as well as Hazardous Waste. SCI has performed these evaluations on a variety of projects types including roadways, levees, utility easements, former railroad beds, and cellular towers.



Environmental Services

- NEPA Evaluations and Consultation
- Phase One, Two, and Three Environmental Site Assessments
- Third Party Air Sampling
- UST removal monitoring, reporting, and plume delineation
- Remedial action plans, system monitoring and reporting
- GeoProbe, piezometer and monitoring well installations
- Subsurface explorations
- Surveys for asbestos, lead-based paint, and mold
- Abatement Specifications
- National Pollutant Discharge Elimination System (NPDES) monitoring and reporting
- Spill Prevention Control and Countermeasure (SPCC) Plans
- Emergency planning and Community Right-to-Know Act reporting
- Compliance audits; annual emission reporting

**For more information contact Ed Grimmer P.E., Vice President at
(636) 949-8200 • edgrimmer@sciengineering.com • www.sciengineering.com**

Natural Resources Services



SCI ENGINEERING, INC.

Representative Projects:

Spire Pipeline

Bluegrass Pipeline

TransCanada Keystone-
XL Pipeline

Rockies Express Pipeline

TransCanada Pathfinder/Bison
Pipeline

Dynegy Coffeen Facility Ornate
Box Turtle Survey

Southern Star Central Pipeline

Upland Pipeline Project-
Raptor Survey

Farmington Industrial Park

Deer Creek Renewal

**"Your expertise and skill
when handling the wetlands
permitting was highly
impressive, and we were
thoroughly satisfied with
your performance."**

—Rich Jameson
Arbor Homes

The Natural Resource Services Group at SCI Engineering provides consulting services to clients for Threatened and Endangered Species surveys. SCI has performed threatened/endangered species habitat surveys, noxious and invasive weed surveys, threatened and endangered plant surveys, nest check surveys and bat surveys. The staff has excellent working relationships with the U.S. Army Corps of Engineers and other federal, state and local agencies.



Natural Resources Services

- Threatened and endangered species consultation, habitat assessments and species specific surveys.
- Wetland and waterbody delineations
- Plan Review and Impact Assessments
- 401, 402, and 404 Clean Water Act permit applications
- Wetland/Stream mitigation planning, banking, and monitoring
- National Pollutant Discharge Elimination System (NPDES) monitoring and reporting
- Water quality sampling and testing
- NEPA Consultation Services
- Stormwater pollution prevention plans
- Bioengineering and stream design services
- Farmland preservation studies
- Flora and fauna studies
- Natural resource delineation and mapping
- Analysis of soil morphology
- Subdivision testing for individual wastewater systems
- Data management
- Erosion control monitoring

**For more information contact Michael Hartoin, Vice President at
(618) 206-3026 ▪ mhartoin@sciengineering.com ▪ www.sciengineering.com**