

SK Design Group, Inc. General Brochure**Missouri Local Program (LPA)**

Founded in 1989, SK Design Group is dedicated to providing the very best in professional engineering services to our clients. Our expertise covers a wide variety of services in the areas of civil engineering and construction administration. SK Design staff includes several LEED accredited professionals with extensive experience in projects that have achieved Silver, Gold or Platinum certification.

We believe that the success of each project depends on our responsiveness to our client's needs, our commitment to our client's budget, and our adherence to the schedule. We build strategic alliances to develop consensus, to transform the built environment, and to effect change through sustainability. We pride ourselves in our ability to bring together various corporate, institutional, community and government stakeholders. Key skills that are central to our way of doing business are good management and keeping an open line of communication.

Thanks to our expert engineering teams, our work ethic, and our relationship-building style of management, we have an impressive following of repeat clients.

SK Design Group offers the following professional engineering services:

Civil Engineering

- Highways/Roads
- Pavement Design/Rehabilitation
- Airfields/Airports
- Drainage Studies
- Sanitary and Storm Sewers
- Water Lines
- Parks and Recreation
- Sustainable Site/Land Development
- Schools and Universities
- Subdivisions
- I & I Studies

Construction Phase Services

- Shop Drawing Review
- Inspections
- Special Inspections
- Coordination

We utilize MicroStation-Geopak, AutoCAD 2017, Civil 3D 2017, AUTOTURN, HYDROFLOW STORM SEWERS, ESRI ArcGIS 10.1, HEC-1, HEC-2, HEC-RAS 3.3, HEC-HMS, TR55, AND HY-8 and other state-of-the-art computer applications. The quality of our services surpasses the industry standards. We subscribe to the philosophy of a complete design. A complete design is one which requires virtually no additional clarification during construction. This philosophy requires thorough analysis and design of all aspects of the project. All details must be worked out, and all ambiguities resolved.

Although each project is unique, SK Design Group incorporates sustainable engineering solutions and Best Management Practices (BMPs) into all of our projects. Our sustainable "Green Solution" approach has resulted in lower initial construction cost, greatly improved storm water quality, reduction in "Heat Island Effect", preservation of wildlife habitat, and enhanced recreational opportunities.

4600 College Boulevard
Suite 100
Overland Park, KS 66211

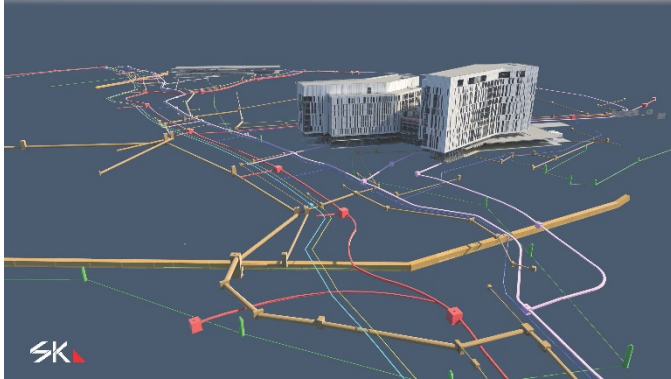
T ■ 913.451.1818

F ■ 913.451.7599

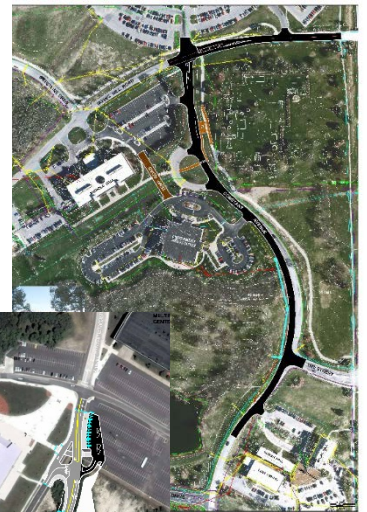
W ■ skdg.com

PROJECT EXAMPLES

Site

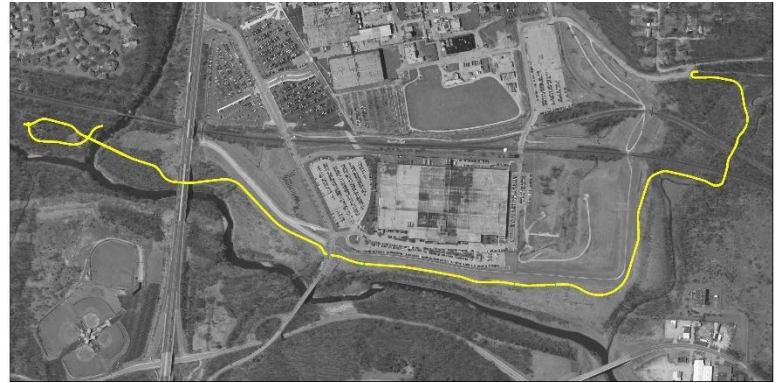


Roadway



PROJECT EXAMPLES

Trails



TURKEY CREEK TRAIL

Construction Inspection and Administration



PERSONNEL

▲ **Sassan Mahobian, PE, LEED AP, President**

▲ Education:

- MS Civ. Eng., MU
- BS Civ. Eng., UMKC

▲ Registration:

- Engineer Missouri and Kansas
- LEED AP



▲ **Katereh Mahobian, PE, LEED BD+C, Vice Pres.**

▲ Education:

- MS Civ. Eng., KU
- BS Civ. Eng., UMKC

▲ Registration:

- Engineer Missouri
- LEED Accredited Professional, BD+C



▲ **John Chamberlin, PE, RLS, Dir. Eng.**

- Education: MS/BS Civ. Eng., KU
- Registration: Engineer, Missouri and Kansas, Land Surveyor, Kansas



▲ **Tim Burfeind, PE, LEED AP, Sr. PM**

- Education: MS and BS Civ. Eng., KU
- Registration: Professional Engineer, Kansas; LEED Accredited Professional



▲ **Gary M. Urkevich, PE, RLS, Sr. PM**

- Education: MS Water Resources Engineering, BS Civ. Eng., KU
- Registration: Engineer, Missouri and Kansas; Land Surveyor, Missouri and Kansas



▲ **Roger Barrett, LEED AP, Sr. PM**

- Registration: LEED Accredited Professional



▲ **Jonathon Smith, PE, PM**

- Education: BS Civil Engineering, Valparaiso University
- Registration: Engineer, Kansas



▲ **Stephen Brefo, PE, Project Manager**

- Education: MS Civ. Eng., Moscow School of Engineering
- Registration: Engineer, Missouri



▲ **Nader Gachkar, Project Manager**

- Education: BS Civ. Eng., Islamic Azad University, Tehran, Iran



▲ **Don Pepper, PE, Field Project Manager**

- Education: MS Civ. Eng., Construction Management, MU
- Registration: Engineer, Missouri and Kansas



▲ **Christopher Francisco, AIA, NCARB, Field Architect**

- Education: BA Architecture, KU
- Registration: Architect in Missouri



▲ **William Beck, EIT, Project Engineer**

- Education: BS Civ. Eng., MU



▲ **Tyler Wysong, PE, Project Engineer**

- Education: BS Civ. Eng., KSU
- Registration: Engineer, Kansas



▲ **JC Cronenwett, Project Engineer**

- Education: BS Civ. Eng., KSU



▲ **Connor Holman, EIT, Project Engineer**

- Education: BS Civ. Eng., MU



▲ **Bruno Soria, EIT**

- Education: BS Civ. Eng., KU



▲ **Rajan Desai, Civ. Eng. Technician**



▲ **Shohreh Nader, Civ. Eng. Technician**



▲ **Jon Foiles, EIT**

- Education: BS Civ. Eng., KU

