



105 West Capitol Avenue
P.O. Box 270
Jefferson City, Missouri 65102

Missouri Department of Transportation
Patrick K. McKenna, Director

1.888.ASK MODOT (275.6636)

June 6, 2017

Dear Consultant:

The Missouri Highways and Transportation Commission is requesting the services of a consulting engineering firm to perform the described professional services for the project included on the attached list.

If your firm would like to be considered for these consulting services, you may express your interest by responding to the appropriate office, which is indicated on the attachments. Limit your letter of interest to no more than **three** pages. This letter should include a statement to indicate your firm's understanding of the project. It should also include any other information which might help us in the selection process, including key personnel you would assign to the project and the backgrounds of those individuals, and any sub-consultants you would propose to use, and an indication of your firm's approach to promoting and developing a diverse workforce. MoDOT is committed to reflecting the diversity of the communities we serve and we expect our partners to do the same. We will utilize the consultant information already on file so we will not need a lengthy submittal of other general company information. In addition, please attach one page with detailed information on similar projects that your key personnel have worked on. Indicate the role your key personnel played in the projects and include reference contact information.

DBE firms must be certified by the Missouri Department of Transportation in order to be counted as participation towards an established DBE Goal. We encourage DBE firms to submit letters of interest as prime consultants for any projects they feel can be managed by their firm. We also encourage both DBE firms and non-DBE firms to consider joining MoDOT's Mentor/Protégé program whenever possible as part of a MoDOT project.

MoDOT will evaluate firms based on: General Experience of Firm, Past Performance, Qualifications of Personnel Assigned, Familiarity/Capability, Accessibility of Firm & Staff, and Project Understanding & Innovation. Firm's not providing a response on approach to workforce diversity will be considered non-responsive to this solicitation. Firm's that are not current on all of the required prequalification categories found in [MoDOT's Approved Consultant Prequalification List](#) at the date of the solicitation expiration will be considered non-responsive.

We request all letters be received by 3:00 pm, **June 20, 2017** at the appropriate office.

Sincerely,

Eric Schroeter, P.E.
State Design Engineer

Attachment

DISTRICT OFFICES

Central District

David T. Silvester, P.E. – District Engineer
Missouri Department of Transportation
1151 Missouri Blvd, PO Box 718
Jefferson City, MO 65102

Contact:

Troy Hughes, P.E., Project Manager
(573) 522-5163
Troy.Hughes@modot.mo.gov
Email responses are encouraged

Bridge Inquiries

Contact:

Stacy McMillan, P.E.,
Structural Liaison Engineer
(573) 526-0250
Stacy.McMillan@modot.mo.gov

Central District

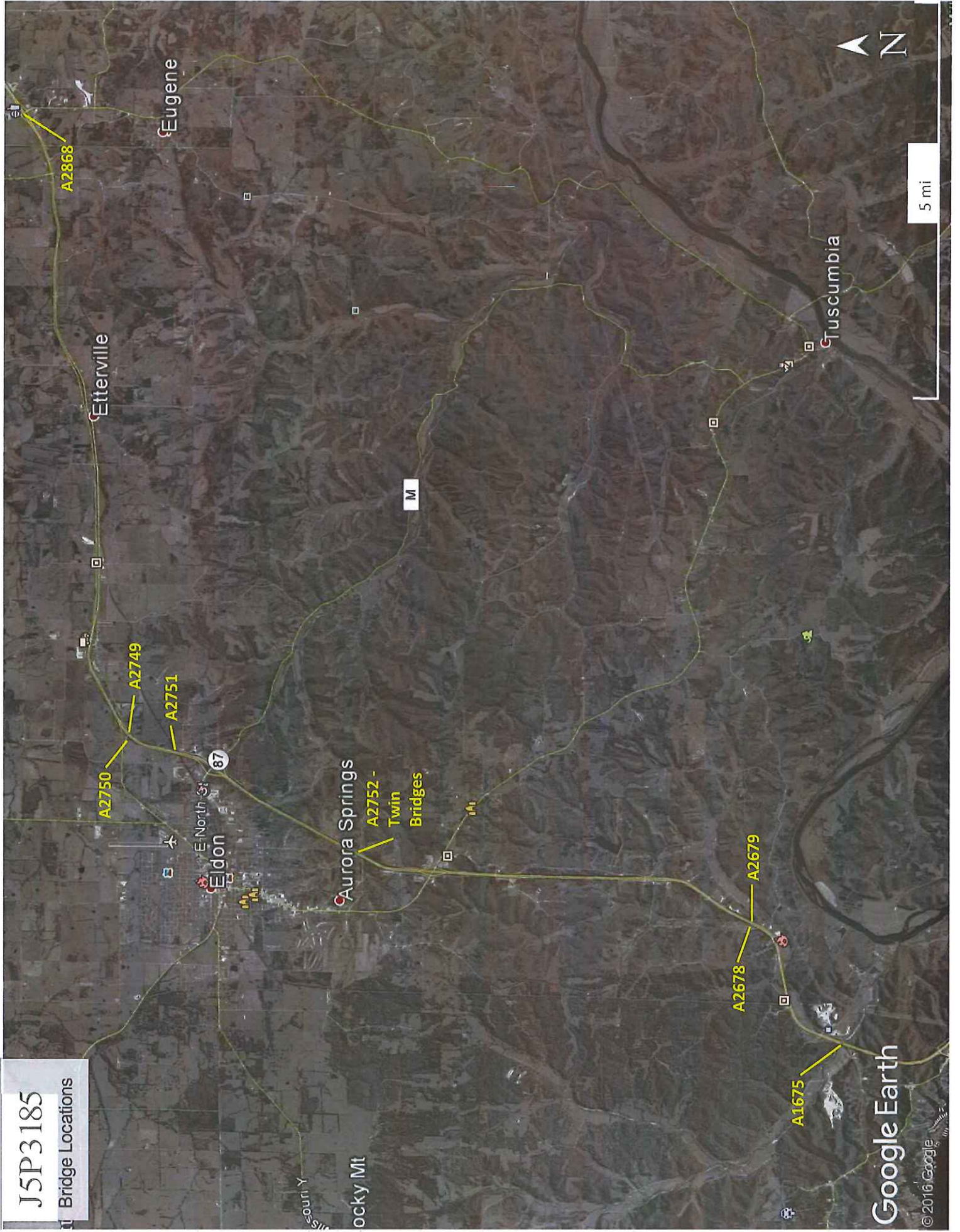
Miller County, Route 54	
Job No:	J5P3185
Location:	Various Locations along Route 54. See attached Map
Proposed Improvement:	Bridge Preventative Maintenance and Rehabilitation
Length:	9 bridges over 19 miles
Approximate Construction Cost:	\$5.4 million
DBE Goal (if applicable)	10%
Consultant Services Required:	Roadway and Bridge design. This will include completion of the MoDOT Structural Rehab. Checklist for each structure, conceptual/preliminary plans, traffic control plans and the final PS&E.
Other Comments:	<p>Interviews or presentation will not be required for the consultant selection.</p> <p>Tentative Date of Consultant Selection-June 29, 2017</p> <p>Project Timeline: June 2018 Bid Letting. 100% review plans due March 12, 2018 Final PSE due April 3, 2018</p> <p>Additional informational files are located at: ftp://ftp.modot.org/Central%20Office/BR/J5P3185/</p> <p>The bridges noted on the attached map have been identified for preventative maintenance and rehabilitation. MoDOT has not identified the type of work for each structure and will be decided after the completion of the Structural Rehab. Checklist. Surveying and right of way is not anticipated to be needed for this project, but if the project team determines these items of work to be necessary, they may be added to the scope of work.</p>

Rating Criteria w/Weighted Values

General Experience of Firm	10 Points Max
Past Performance	25 Points Max
Qualifications of Personnel Assigned	20 Points Max
Familiarity/Capability	10 Points Max
Accessibility of Firm & Staff	10 Points Max
Project Understanding & Innovation	25 Points Max
	100 Points Max Total

J5P3185

Bridge Locations



Google Earth

© 2016 Google