



105 West Capitol Avenue
P.O. Box 270
Jefferson City, Missouri 65102

Missouri Department of Transportation
Patrick K. McKenna, Director

1.888.ASK MODOT (275.6636)

May 14, 2018

Dear Consultant:

The Missouri Highways and Transportation Commission is requesting the services of a consulting engineering firm to perform the described professional services for the project included on the attached list.

If your firm would like to be considered for these consulting services, you may express your interest by responding to the appropriate office, which is indicated on the attachments. Limit your letter of interest to no more than three pages. This letter should include a statement to indicate your firm's understanding of the project. It should also include any other information which might help us in the selection process, including key personnel you would assign to the project and the backgrounds of those individuals, and any sub-consultants you would propose to use, and an indication of your firm's approach to promoting and developing a diverse workforce. MoDOT is committed to reflecting the diversity of the communities we serve and we expect our partners to do the same. We will utilize the consultant information already on file so we will not need a lengthy submittal of other general company information. In addition, please attach one page with detailed information on similar projects that your key personnel have worked on. Indicate the role your key personnel played in the projects and include reference contact information.

DBE firms must be certified by the Missouri Department of Transportation in order to be counted as participation towards an established DBE Goal. We encourage DBE firms to submit letters of interest as prime consultants for any projects they feel can be managed by their firm. We also encourage both DBE firms and non-DBE firms to consider joining MoDOT's Mentor/Protégé program whenever possible as part of a MoDOT project.

MoDOT will evaluate firms based on: Project Understanding & Innovation, Past Performance, Qualifications of Personnel Assigned, General Experience of Firm, Familiarity/Capability, Accessibility of Firm & Staff. Firm's not providing a response on approach to workforce diversity will be considered non-responsive to this solicitation. Firm's that are not current on all of the required prequalification categories found in [MoDOT's Approved Consultant Prequalification List](#) at the date of the solicitation expiration will be considered non-responsive.

We request all letters be received by 3:00 pm, May 30, 2018 at the appropriate office.

Sincerely,

Eric Schroeter, P.E.
State Design Engineer

Attachment

DISTRICT OFFICES

District SL

Thomas Blair, P.E. – District Engineer
Missouri Department of Transportation
1590 Woodlake Drive
Chesterfield, MO 63017

Contact

Lisa Kuntz, P.E. – Project Manager
314-453-1879
Lisa.Kuntz@modot.mo.gov
Email responses are encouraged

District - SL

St. Charles County, Route 67	
Job No:	J6P3372
Location:	US 67 just south of the Mississippi River Bridge in West Alton
Proposed Improvement:	Raise approximately 1.0 miles of SB 67 out of the Flood Plain and improve access to multiple USACE properties in the vicinity. Install a new signalized intersection at Riverlands Way Drive.
Length:	1.0 miles
Approximate Construction Cost:	\$2.7 M
DBE Goal (if applicable)	14%
Consultant Services Required:	Roadway Engineering
Other Comments:	<p>Interviews or presentation will not be required for the consultant selection.</p> <p>Tentative Date of Consultant Selection- June 30, 2018</p> <p>The project is partially funded by the Eastern Federal Lands Access Program (FLAP). Please see the conceptual plan exhibit that was submitted as part of the FLAP application.</p> <p>Additional right of way may be needed for the project and a right of way boundary established. Photogrammetry will be provided. It is anticipated that the project will require a 408 permit and coordination with the Consolidated North County Levee District and USACE.</p> <p>The project is schedule for a March 2020 letting, with design completed December 2019.</p>

Rating Criteria w/Weighted Values

Project Understanding & Innovation	25 Points Max
Past Performance	25 Points Max
Qualifications of Personnel Assigned	20 Points Max
General Experience of Firm	10 Points Max
Familiarity/Capability	10 Points Max
Accessibility of Firm & Staff	<u>10 Points Max</u>
	100 Points Max Total

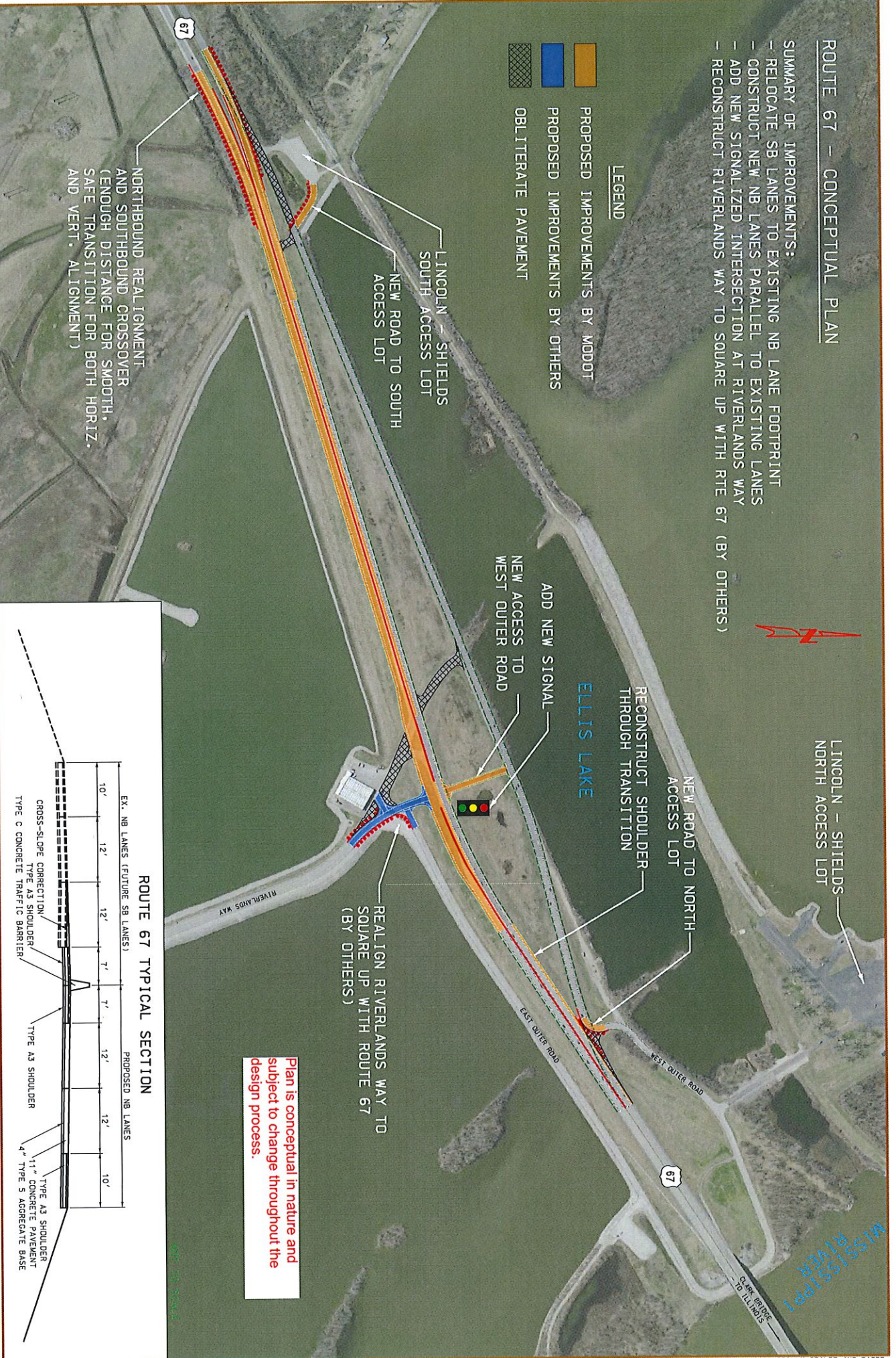
ROUTE 67 - CONCEPTUAL PLAN

SUMMARY OF IMPROVEMENTS:

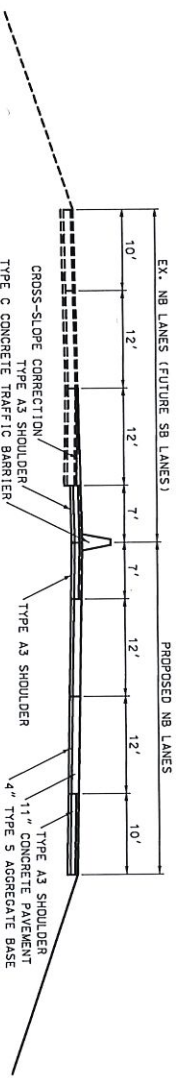
- RELOCATE SB LANES TO EXISTING NB LANE FOOTPRINT
- CONSTRUCT NEW NB LANES PARALLEL TO EXISTING LANES
- ADD NEW SIGNALIZED INTERSECTION AT RIVERLANDS WAY
- RECONSTRUCT RIVERLANDS WAY TO SQUARE UP WITH RTE 67 (BY OTHERS)

LEGEND

- PROPOSED IMPROVEMENTS BY MODOT
- PROPOSED IMPROVEMENTS BY OTHERS
- OBLITERATE PAVEMENT



ROUTE 67 TYPICAL SECTION



Plan is conceptual in nature and subject to change throughout the design process.