



ADDENDUM NUMBER 2

Project Number 64009001; Federal No. STP 3301 (404)

Project Title Town of Kansas Site Fencing

ISSUE DATE: November 18, 2011

Bidders are hereby notified that the Bidding and Contract Documents for the above project, for which Bids are to be received on **November 29, 2011**, are amended as follows:

Information to Bidders The following is provided to Bidders for information only:

1. List of Attendees to Pre-Bid Conference
2. Bidders are hereby once again reminded that forms 00410.01 and 00410.02 are due by November 22, 2011. Forms should be submitted to the Contract Administrator listed in the Instructions to Bidders.
3. The following is a list of questions that have been received regarding the project:

Q1.	How much clearing and grubbing is required for the project?
A1.	Under this contract, the contractor shall be responsible for clearing/grubbing only those areas necessary to install the fence.
Q2.	How much train traffic goes through this area? Information is needed to obtain Railroad Protective Liability Insurance (RLPI).
A2.	According to representatives from the Kansas City Terminal Railway, 65 trains a day go by the site. No Amtrak. Maximum speed of train is 45mph.
Q3.	Do Sub-Contractors need to carry RLPI? SC-5.03A says that all Sub Contractors shall have in force the same insurance requirements as required by the Contract Documents.
A3.	SC-5.03A of section 800 of the contract refers only to general liability, automobile, and employer's and workmen's compensation. RLPI is an additional requirement only for the general contractor.
Q4.	Do the spoils from the post holes need to be hauled off?
A4.	No. Spoils from any post holes that the contractor elects to dig or auger may be uniformly spread throughout the site.
Q5.	Is the contractor responsible for surveying/staking the site?
A5.	Contractor is responsible for completing the necessary survey/staking work in order to allow for the installation of the fence to proceed in accordance with the coordinates provided in the drawings.

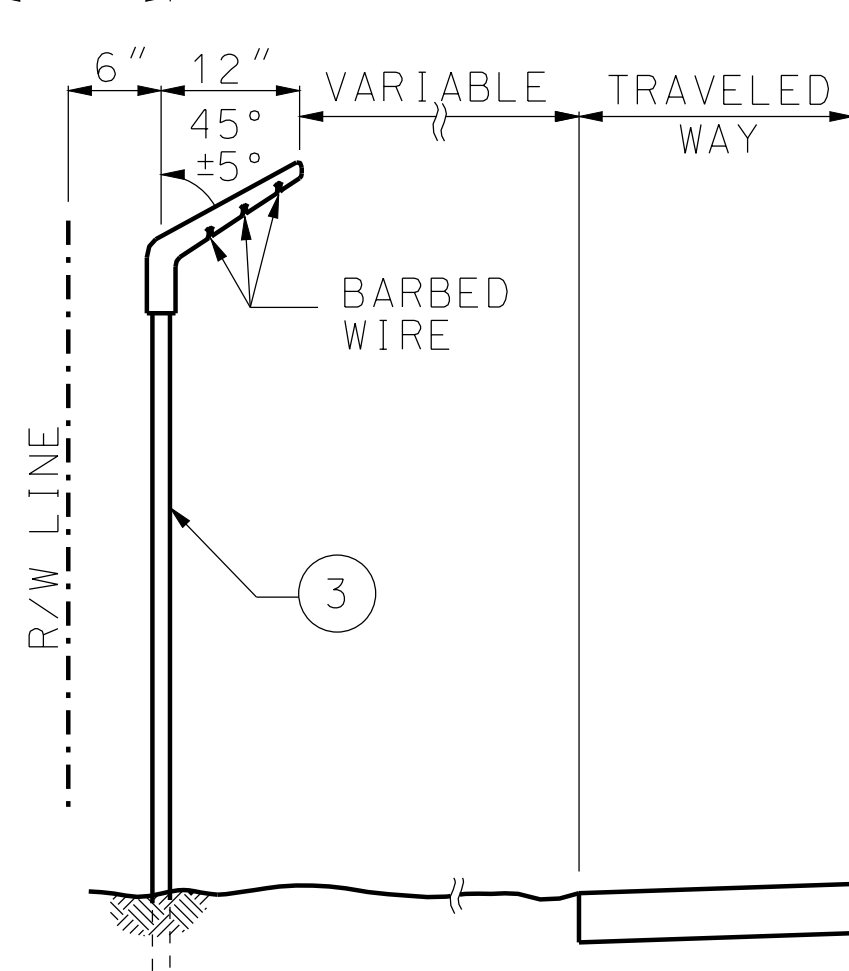
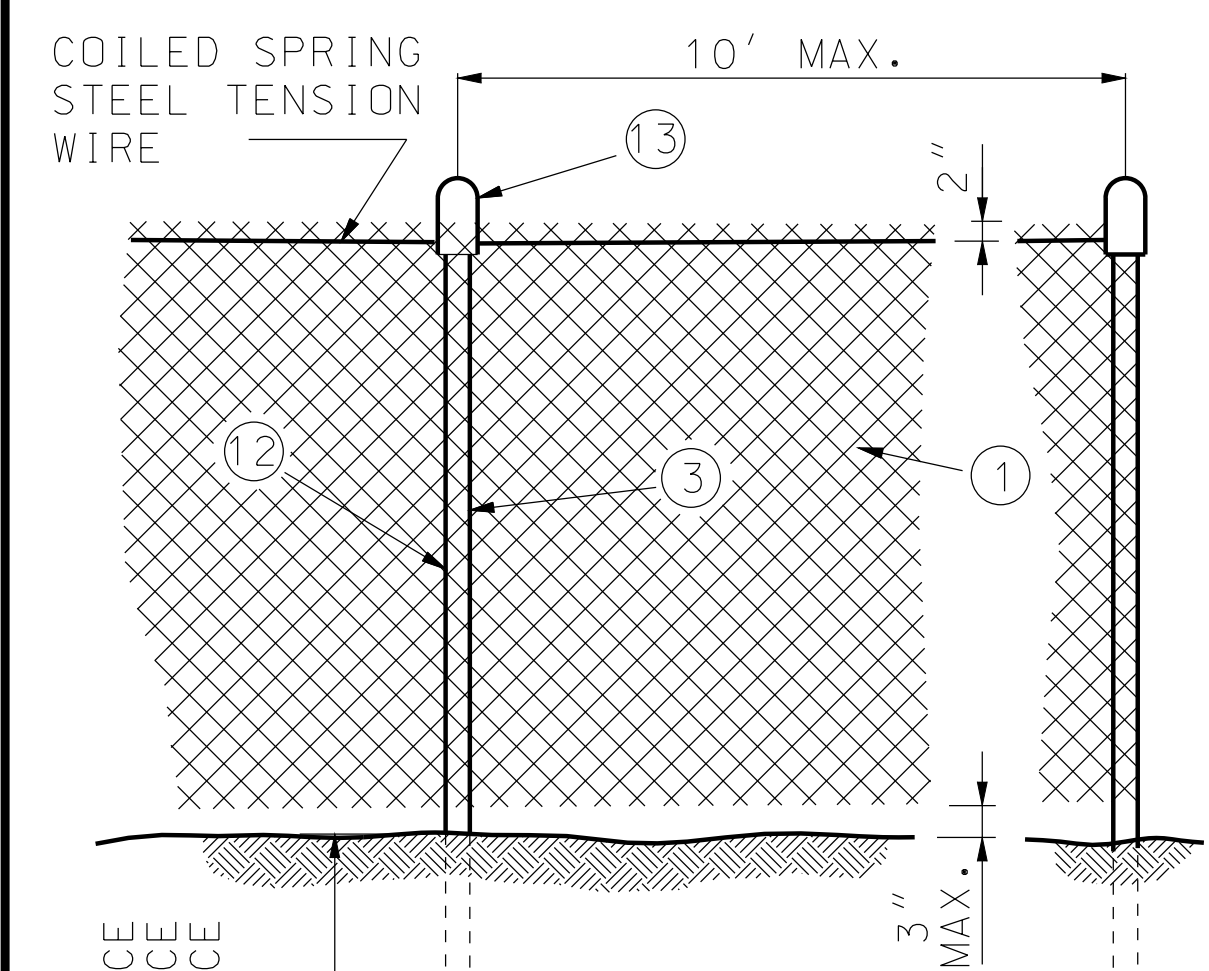
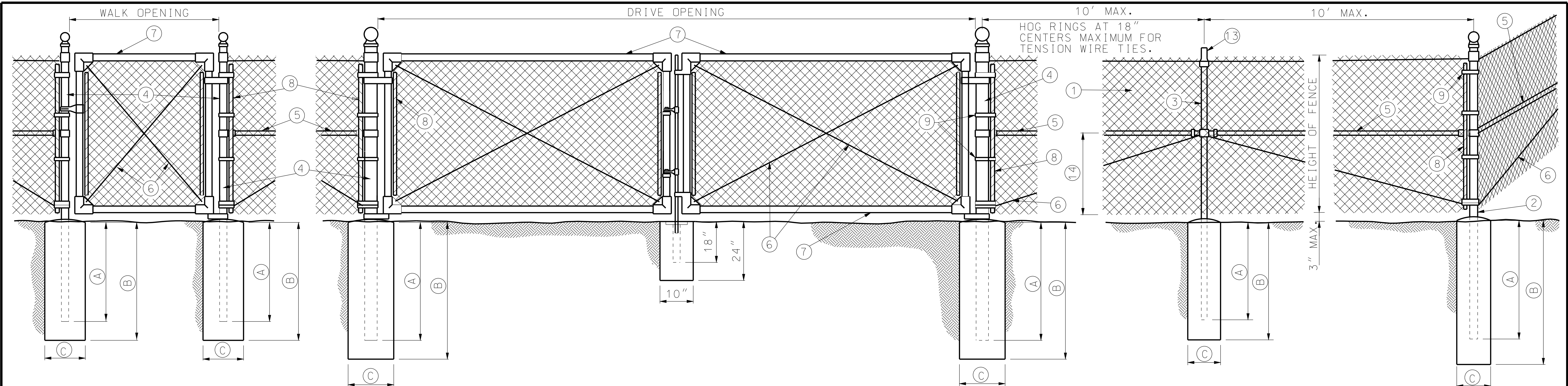
Q6.	Will flagmen be required for the project?
A6.	At the present time, the City does not anticipate the need for flagmen, provided that the contractor remains 25' beyond the centerline of an operating train. However, the railroad may, at its own discretion, require the use of flagmen. Should that occur, the cost to employ flagmen will be reimbursed by the City to the Contractor according to the terms of the Contract.

Specifications

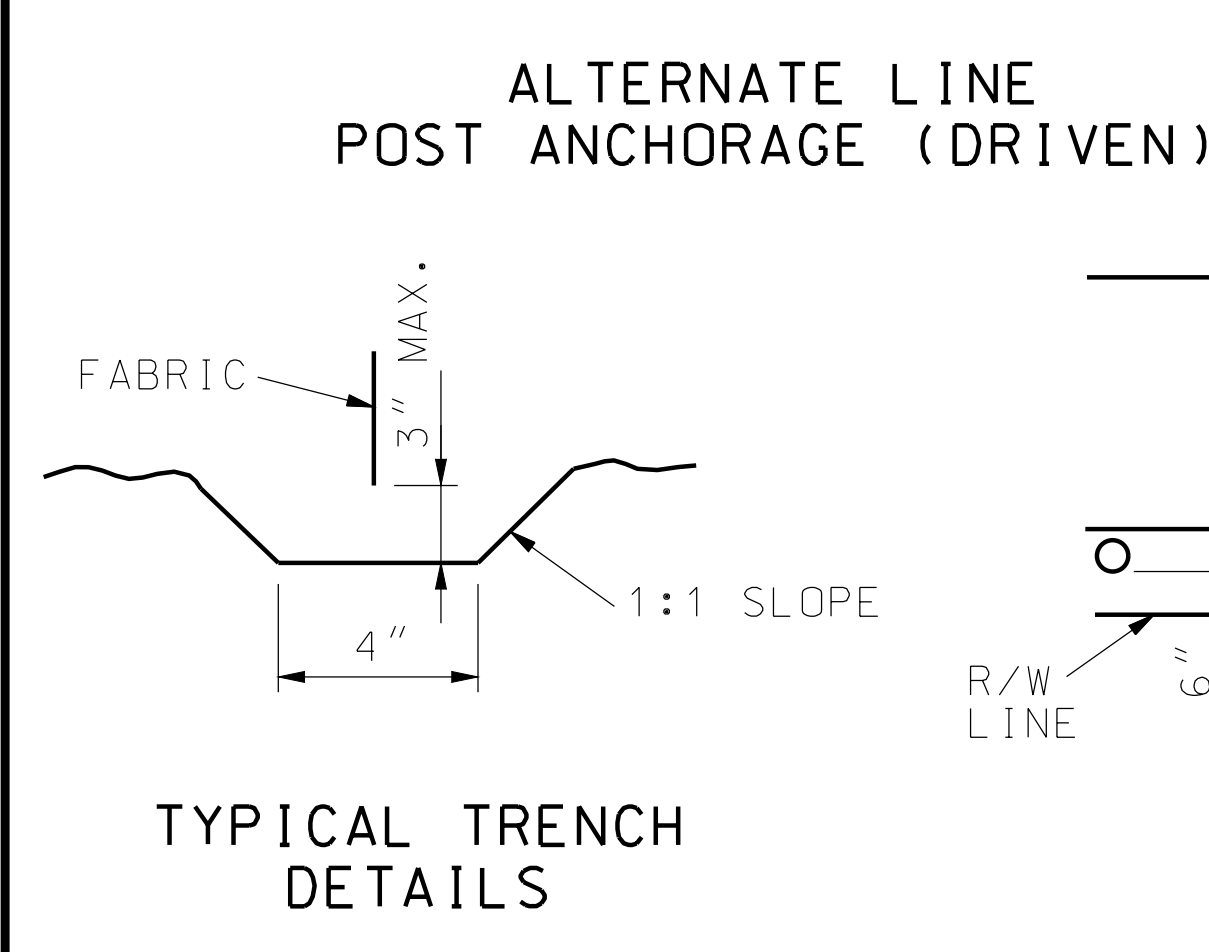
1. MODOT Standard Drawing 60710V is hereby provided. This drawing was to be included as page 02308-3 of Section 2308 – Fencing – of the Specifications for the project.

NOTE: Bidders must acknowledge receipt of this Addendum by listing the number and date, where provided, on the Bid Form - Document 00410.





NOTE: IF POSTS CANNOT BE DRIVEN TO DEPTHS INDICATED BECAUSE OF ROCKY SOILS OR OTHER CONDITIONS, THEY SHALL BE REMOVED AND RE-PLACED IN FOOTINGS. POST TOPS SHALL BE PROTECTED AGAINST DAMAGE AND ALL POSTS WHICH ARE DAMAGED DURING INSTALLATION SHALL BE REMOVED AND REPLACED.

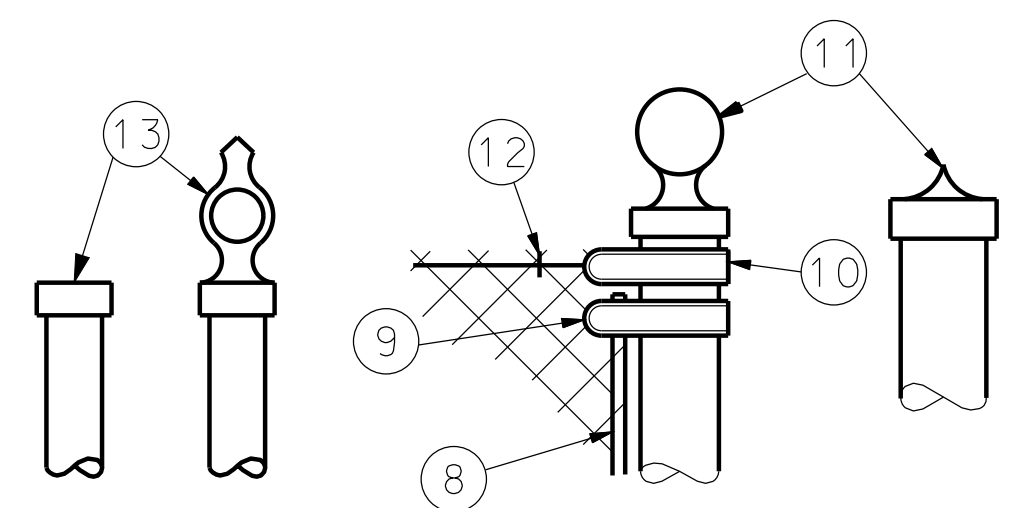


BARBED WIRE EXTENSION BRACKET

- LEGEND**
- ① FABRIC
 - ② END, CORNER OR PULL POST
 - ③ LINE POST
 - ④ GATE POST
 - ⑤ BRACE
 - ⑥ TRUSS ROD
 - ⑦ GATE FRAME
 - ⑧ STRETCHER BAR
1/4" X 3/4" PLATE
 - ⑨ STRETCHER BAR BAND
 - ⑩ END OR CORNER CLAMP
 - ⑪ POST TOPS
(OTHER THAN LINE POSTS)
 - ⑫ FABRIC TIES
 - ⑬ LINE POST TOPS WITH OR WITHOUT TOP RAILS
 - ⑭ ONE-HALF FABRIC HEIGHT OR AS RECOMMENDED BY MANUFACTURER

DESCRIPTION		MINIMUM DEPTH FOR SETTING POSTS		
		HEIGHT OF FENCE		
		48" SIZE (IN.)	60" SIZE (IN.)	72" SIZE (IN.)
② ENDCORNER & PULL POST	(A)	30"	36"	36"
	(B)	36"	42"	42"
	(C)	10"	12"	12"
③ LINE POST	(A)	24"	27"	36"
	(B)	30"	36"	42"
	(C)	10"	12"	12"
④ GATE POST	(A)	30"	36"	36"
	(B)	36"	42"	42"
	(C)	10"	12"	12"

DESCRIPTION	MINIMUM SIZE FOR FENCE HARDWARE		
	WIDTH	SIZE (IN.)	LBS/FT.
② END CORNER OR PULL POST	N/A	2 1/2 DIA.	5.79
③ LINE POST	N/A	2" DIA.	3.65
④ GATE POST (SINGLE GATE OR 1 LEAF OF DOUBLE)	≤ 6'	2 1/2 DIA.	5.79
	≤ 13'	3 1/2 DIA.	9.10
	≤ 18'	6 DIA.	18.97
	> 18'	8 DIA.	24.70
⑤ BRACE	N/A	1 1/4 DIA.	2.27
⑥ TRUSS ROD	N/A	3/8	-
⑦ GATE FRAME	N/A	1 1/2 DIA.	2.72



POST TOPS TO BE PRESSURE FITTED OR SCREWED. POST TOPS MAY BE ELIMINATED FOR ALL POSTS EXCEPT PIPE POSTS. IF POST TOPS ARE ELIMINATED, POST LENGTH SHALL BE INCREASED 3".

POST TOPS

WIRE SIZE AND HEIGHT OF FABRIC			
SPECIFIED DIAMETER			HEIGHT OF FABRIC INCHES
INCHES	GAGE	MESH INCHES	
0.120	11	2	36, 42
0.148	9	2	48, 60
0.192	6	2	72, 84

GENERAL NOTES:

WEIGHTS OF MATERIALS SHOWN IN TABLE ARE FOR ASTM F 1043, GROUP 1A. SIZES SHOWN ARE FOR STEEL AND ALUMINUM. EQUIVALENT ASTM F 1043 ALTERNATIVES MAY BE USED.

PULL POSTS SHALL BE USED AT SHARP BREAKS IN VERTICAL GRADE OR AT APPROXIMATE 500' CENTERS ON STRAIGHT RUNS OR AS DIRECTED BY THE ENGINEER.

DRILLED HOLES © IN SOLID ROCK SHALL PROVIDE A DIAMETER OF NOT LESS THAN 2" GREATER THAN THE MAXIMUM TRANSVERSE DIMENSION OF THE POST SECTION.

ALL POSTS SHALL HAVE PROVISIONS TO SECURELY HOLD THE TOP TENSION WIRE IN POSITION AND ALLOW FOR REMOVAL AND REPLACEMENT OF A POST WITHOUT DAMAGING THE TOP TENSION WIRE.

THE MESH SIZE SHALL BE 2 INCHES ± 1/8 IN. MEASURED IN EITHER DIRECTION AS THE MINIMUM CLEAR DISTANCE BETWEEN THE WIRES FORMING THE PARALLEL SIDES OF THE MESH.

MISSOURI HIGHWAYS AND TRANSPORTATION COMMISSION
105 WEST CAPITOL
JEFFERSON CITY, MO 65102
1-888-ASK-MODOT (1-888-275-6636)

"THIS MEDIA SHOULD NOT BE CONSIDERED A CERTIFIED DOCUMENT."

CHAIN-LINK FENCE

DATE EFFECTIVE: 02/01/2007	607.10V	SHEET NO. 1 OF 1
DATE PREPARED: 8/21/2009		