

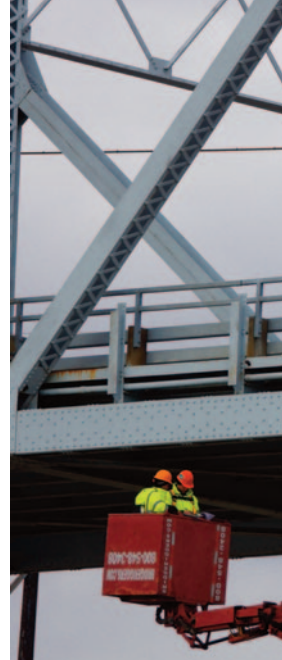


 **JUNEAU**
ASSOCIATES, INC., P.C.
ENGINEERING & LAND SURVEYING



Metro East
Parks & Recreation District
Overlook
East St. Louis, IL

Juneau has provided professional engineering, land surveying and construction management services for public and private clients since 1980. Today, the firm has an extensive engineering staff with outstanding professional qualifications in the fields of Civil Engineering and Land Surveying.



Water Treatment Facility
Maryville, IL

Civil Engineering

- NEPA Compliance and Documentation
- Grading and Earthwork
- Pavement Design
- Storm Sewer Design
- Drainage Analysis
- Preliminary/Final Construction - Plans and Specifications
- Industrial Improvements

Water & Wastewater Engineering

- System Study/Report
- System Modeling
- Rate Review
- Water Distribution Systems
- Sanitary Sewer Collection Systems
- Lift Station Design
- Sanitary Sewer/Manhole Rehabilitation
- Permit Applications
- Funding Applications
- Preliminary & Final Construction Documents and Specifications

Structural Engineering

Structural Services

- Bridge Designs / Details
- Bridge Inspections: Routine, Fracture Critical, and In-depth Building & Structures Designs / Details
- Building & Structures Inspections & Evaluations
- Computer-Aided Designs / Details
- Structural Design & Analysis
- Specifications
- Structural Rehabilitations & Retrofits

Structure Types

- Bridge Replacements, Rehabilitations, & Retrofits
- Building & Industrial Facilities
- Unique Foundations
- Retaining Walls
- Tunnels
- Water/Wastewater Facilities

Land Acquisition

- IDOT Certified Negotiator



Water Treatment Facility
Maryville, IL

Our best engineering and management skills are incorporated throughout each step of the concept, design, and construction processes. We give each project our total commitment from concept to completion, following through on all of the details that help us complete quality projects.



Chain of Rocks Bridge
Madison, IL



SIUE Residence Hall
Edwardsville, IL



IL Rte 162 Roundabout
Maryville, IL

Transportation Engineering

- Feasibility Studies
- Safety Studies
- Barrier Warrant Analysis
- Project Development Reports -
New Construction/Rehabilitation
- Public Involvement Activities
- NEPA Compliance and Documentation
- Traffic Signal Design
- Roundabout Design
- Intersection Design
- Freeway Crossover Design
- Roadway - Horizontal and Vertical Designs
- Pavement Design
- Final Construction Plans and Specifications
- Pedestrian and Bicycle Trail Design

Geographic Information Systems

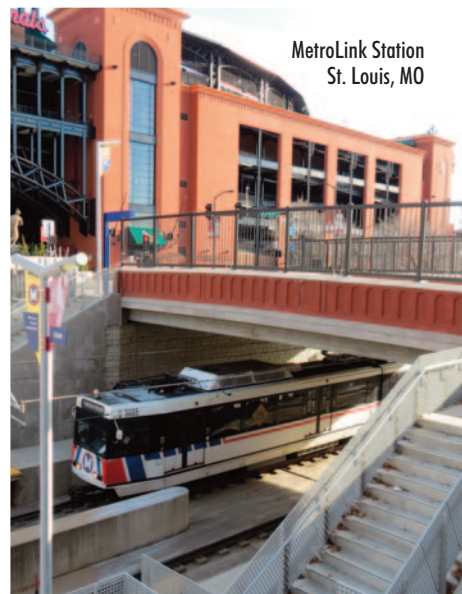
- Utility System Mapping
- Site Topographic and Environmental Mapping
- Data Conversion Services
- Database Development Services
- Web GIS Site Administration

Construction Engineering

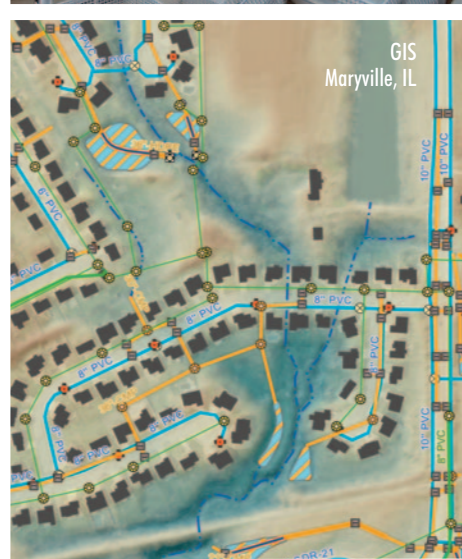
- On-site Construction Management
- On-site Construction Observation
- Documentation & Record Drawings
- Quality Assurance
- Construction Claims Analysis

Land Surveying

- Property Research
- Boundary & Topographic Surveys
- Residential Lot Surveys
- LiDAR Ground Control
- 3D Laser Scanning
- Groundwater Monitoring Well Surveys
- Stockpile Quantities
- Monitoring Potential Mine Subsidence
- Pipe & Transmission Line Surveys
- Subdivision Surveys & Platting
- ALTA/NSPS Land Title Surveys
- GPS Surveys
- Construction Layout & Staking
- Hydrographic Surveys
- Industrial Precision Alignment
- Elevation Certificates



MetroLink Station
St. Louis, MO



GIS
Maryville, IL





Pervious Pavers
Alton, IL



Salute to Steel
Madison, IL



Bike Trails
Glen Carbon, IL

We take pride in our ability to offer our clients a full range of design, planning and construction services. Here are just a few of our recognitions:

ACEC-Missouri 2014 Engineering Excellence Competition

Honor Award | CCU-1 Inspection, Analysis, and Retrofit Plans project

Project Location: Phillips 66 Wood River Refinery, Wood River, IL

2015 Concrete Council / American Steel Fabricators Quality Concrete Awards

2015 Quality Concrete Award | Timberlake Manor Parkway Bridge project

Project Location: City of Chesterfield, MO

2017 Concrete Council / American Steel Fabricators Quality Concrete Awards

Promotional Award | Alton Regional Multi-Modal Transportation Center project

Project Location: Alton RMTC, Alton, Illinois

ACEC-Illinois 2017 Engineering Excellence Awards

Special Achievement Award | Madison Harbor Project

Project Location: Madison Illinois

ACEC-Illinois 2018 Engineering Excellence Awards

Special Achievement Award | Aeration System Improvement Project

Project Location: Granite City Wastewater Treatment Plant, Granite City, IL

ACEC-Illinois 2018 Engineering Excellence Awards

Merit Award | Alton Regional Multi Modal Transportation Center project

Project Location: Alton RMTC, Alton, Illinois

Granite City

2100 State Street
P.O. Box 1325
Granite City, IL 62040
618-877-1400

Edwardsville

100 N. Research Drive
Edwardsville, IL 62025
618-659-0900

St. Louis

330 N. Fourth Street
Suite 200
St. Louis, MO 63102
314-241-4444

Chicago Area

555 West Central Road
Suite 101
Hoffman Estates, IL 60192
847-991-2004

CAGE: 5RKG7

DUNS: 02-728-2920

Veteran Owned Small Business

Licensed in Illinois and Missouri

Incorporated in 1980

NAICS Codes:

541330 – Engineering Services

541370 – Surveying and Mapping (except Geophysical)

www.jaipc.com • Email Inquiries: jaipc@jaipc.com

Juneau Associates, Inc. P.C.