

# Firm Profile

## Company Information

### Gonzalez Companies, LLC

1750 S. Brentwood Blvd, Suite 700  
Saint Louis, Missouri 63144

**Contact:** Carlos Huddleston, P.E.

**Phone:** (618) 222-2221 ext. 220

**Email:** chuddleston@gonzalezcos.com

### Firm Principals:

Carlos Huddleston, P.E.  
(51% Ownership)  
R. Patrick Judge, P.E.  
(47% Ownership)  
Wesley Hampsch  
(2% Ownership)

Gonzalez Companies is a professional civil engineering and construction management firm, specializing in infrastructure projects. We provide comprehensive Planning, Design, and Construction Management services to large and small Departments of Transportation and Municipalities in the Midwest region. Although Gonzalez is a certified D/MBE firm, 70 percent of our work is completed as the Prime Consultant. The diverse backgrounds of our engineers and staff allow us to develop and implement cost-effective solutions to meet our clients' needs.

Gonzalez was established in 1999. Our firm has 65 employees across 4 offices, located in St. Louis, MO; Louisville, KY; Belleville, IL; Chicago, IL and are serving over 100 clients in 11 states throughout the Midwest and Southwest.



## Transportation

Gonzalez works with state, county, and local governments to take a transportation project from concept and move the idea through funding, regulatory coordination, planning, design and construction. We balance the impacts and benefits to the community. Our key personnel include former public works directors and senior DOT engineers who have the experience to develop transportation projects that improve everyday life for our communities. Our goal is to increase safety, provide mobility, and promote economic development while respecting the environment. From preliminary studies and environmental documents to final plans and specifications, we have the working knowledge and experience to produce a quality project. We provide construction observation and closeout to ensure the project is constructed as designed.



### Capabilities

- Highways & Local Roads
- Geotechnical Engineering
- Construction Engineering
- State & Federal Environmental Reporting
- Value Engineering Studies
- ADA Compliance
- Roundabouts
- Complete Street Design
- Trails
- Safe Routes to School Studies
- Intersection Design Studies
- Parking Studies
- Traffic Impact Studies
- Travel Forecasting & Modeling
- Access Justification Report

### Departments of Transportation Relevant Contracts

Poplar Street Bridge Complex  
Interstate 270 and IL Route 3 Interchange  
MoDOT I-70 Resurfacing  
MoDOT I-70 Outer Road Resurfacing  
Route 157 over Schoenberger Creek  
MoDOT Route 21 Widening  
St. Clair Avenue  
Waterloo Bypass  
Troy Interchange  
Interstate 255 Resurfacing  
I-90 at I-290 Congress Parkway

MoDOT Route M Resurfacing  
Interstate 64 over MetroLink  
Interstate 55  
MoDOT Mowing Contract  
MoDOT I-70 Crack Seal Contract  
ESL 2nd and Missouri Improvements  
Route 157 Turn Lane  
Cape Seal Overlay  
Mississippi River Bridge Utility  
Interstate 64 Improvements  
Interstate 64 Resurfacing

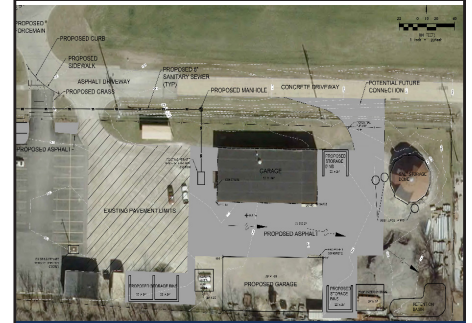
Relocated Illinois Route 3  
Bridge Replacement IL 15 over IL 13  
Collinsville Road Improvements  
Sparta Randolph County  
Improvements Route 159  
Route 111 and Chain of Rocks  
Various/Various Construction Inspection  
District 1 Paint Inspection  
District 8 Construction Inspection  
Various/Various Utility Coordination  
Relocation Moveable Bridges- Joliet



**Poplar Street Complex, Saint Louis Missouri**



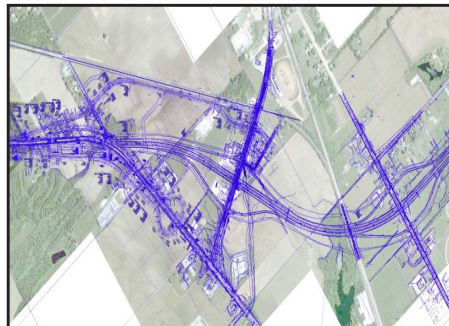
**Stan Musial Veterans Memorial Bridge  
Illinois Department of Transportation**



**O'Fallon Township Building and Facility  
Improvements, O'Fallon, Illinois**



**Route 157 over Shoenberger Creek  
St. Clair County, Illinois**



**I-255 Utility Relocation Coordination  
Madison and Jersey Counties, Illinois**



**Ramsey East Environmental Permitting  
Ameren**

## Transportation Construction Management

The Gonzalez staff is comprised of design engineers, construction managers, and inspectors, including several former Department of Transportation employees. Working in consort with D-B teams and general contractors, our seasoned transportation team provides constructability review, construction inspection, construction QA/QC, and construction management.

### Capabilities

- Geometric Design
- Stormwater Design
- Traffic Studies
- Traffic Control
- Intersection Design Studies
- Interstate Signage
- Stormwater Pollution Prevention Plans (SWPPP)
- Sidewalks
- Streetscape
- Paving
- ADA Compliance
- Lighting

## Utility Relocation

Gonzalez has successfully coordinated over \$20 million in utility relocation work as a result of roadway and stormwater infrastructure projects. Our team thoroughly understands the importance of identifying utility conflicts early in the project in order to avoid delays to the project schedule.

### Capabilities

- Construction Plan Review
- Utility Company Coordination
- Verification of Locates
- Cost Estimates Review
- Monitor/Inspection
- Field Checks and Adjustments
- Scheduling
- QA/QC Inspection

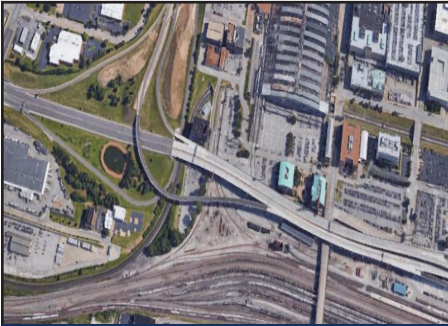
## Site Development

Gonzalez has provided civil engineering services to public and private clients throughout the Midwest. Our team includes former public works engineers who understand the balance of managing limited budgets while maintaining the longterm integrity of infrastructure.

### Capabilities

- Site Evaluation and Design
- Stormwater Pollution Prevention Plans (SWPPP)
- Drainage Design
- Drainage Studies
- Inventories of Existing System Components
- Hydrologic Analysis
- Utility Coordination
- Floodplain/Floodway Mapping
- Detention/Retention Storage Design
- Permitting
- Hydraulic Reports
- Plans and Specifications





**I-64 at Jefferson Avenue**  
City of St. Louis; MoDOT



**Drainage Study Conoco Phillips**  
Wood River, Illinois



**Peoria 400 Slope Failure**  
Ameren



**Rieder Road RR Bridge Replacement**  
O'Fallon Township, O'Fallon, Illinois



**Neoga South Substation SWPPP**  
Development, Neoga, Illinois



**Bank Stabilization**  
Jersey County, Illinois Highway Dept.

## Transportation Design

The Gonzalez staff is comprised of design engineers, construction managers, and inspectors, including several former Department of Transportation employees. Our seasoned transportation team provides competitive solutions to challenging transportation projects through an analytical, innovative, and buildable approach.

### Capabilities

- Geometric Design
- Stormwater Design
- Traffic Studies
- Traffic Control
- Intersection Design Studies
- Interstate Signage
- Stormwater Pollution Prevention Plans (SWPPP)
- Sidewalks
- Streetscape
- Paving
- ADA Compliance
- Lighting

## Land Survey

Gonzalez begins the concept planning stage with a site constraints analysis to provide our clients with an opportunity to reevaluate the feasibility and potential success of the project based on site-specific information. Our project teams are set up to deliver cost-efficient site designs by incorporating remedial strategies and permitting requirements into the design process.

### Capabilities

- Topographic Surveys
- Hydrologic Surveys
- ALTA/ACSM Surveys
- Infrastructure Layout
- Wetland Surveys
- Stream Restoration Surveys
- Utility Design & Location
- Right-of-Way Determination
- Legal Descriptions
- Easement and Right-of-Way Plats
- Existing Conditions Plans
- CADD

## Geotechnical

Gonzalez provides expertise through the full range of project phases, from initial concept through post-construction monitoring. We honor the solid reputation and regard we have through the geotechnical community with our dedicated quality and dependability.

### Capabilities

- Shallow and Deep Foundations
- Slope Stability
- Seepage Analysis
- Earthwork, Grading, and Structural Backfill
- Dewatering, Non-Hazardous
- Geotechnical Investigations and Engineering
- Construction Observation
- Geo Database Development
- Shoring and Underpinning
- Levees and Facility Design Inspection and Assessment
- Shoring and Underpinning
- Slope Repair and Protection
- Civil Recommendations
- Structural Geotechnical Reports
- Pile Load Testing, Observation, and Analysis
- Geophysical Survey



**Sewer Separation  
Wood River Illinois**



**North Plant Primary Flocculation Upgrades  
Missouri American Water**



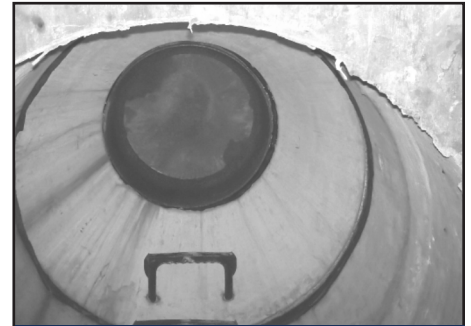
**Linton Flood Mitigation  
City of Wood River, Illinois**



**10th and Hawthorne Pump Station  
Wood River, Illinois**



**Lower and Middle River des Peres Tunnel  
Metropolitan St. Louis Sewer District**



**Northwest Healthcare Stormwater Control  
BJC HealthCare**

## **Wastewater**

Gonzalez assists municipalities and sewer districts in meeting their wastewater engineering needs with sensitivity to budgetary constraints and minimal disruption to operations. During construction, Gonzalez provides inspection and management services.

### **Capabilities**

Construction Inspection  
Constructibility Review Topographic Surveys  
Hydrologic Surveys  
ALTA/ACSM Surveys  
Infrastructure Layout  
Wetland Surveys  
Stream Restoration Surveys  
Utility Design & Location  
Right-of-Way Determination  
Legal Descriptions  
Easement and Right-of-Way Plats  
Existing Conditions Plans  
CADD

## **Water**

Gonzalez's water engineering services are valued and repeatedly utilized by water utility owners. We also provide critical constructibility, construction inspection, and construction management services for Water facilities improvement projects.

### **Capabilities**

Construction Inspection  
Constructibility Review  
Site Evaluation and Design  
Stormwater Pollution Prevention Plans (SWPPP)  
Drainage Design  
Drainage Studies  
Inventories of Existing System Components  
Hydrologic Analysis  
Utility Coordination  
Floodplain/Floodway Mapping  
Detention/Retention Storage Design  
Permitting  
Hydraulic Reports  
Plans and Specifications

## **Stormwater**

Gonzalez has provided comprehensive solutions for stormwater management, analysis, design, and construction for public and private clients throughout the Midwest. Post design, Gonzalez also has provided Construction Inspection services during construction of the improvements.

### **Capabilities**

Construction Observation  
Master Planning  
Modeling & Drainage Studies  
Civil 3D  
XPSWMM  
Pond Pack  
Culvert Master  
StormCAD  
HEC-RAS  
HEC-HMS  
Hydra, Microstation  
Geopak  
ESRI/ArcGIS  
GIS Asset Mapping  
Permitting  
U.S. Corps of Engineers Permits  
State Department of Natural Resource Permits  
NPDES Permits